



Tile & Stone Installation Systems

Table of Contents

Drawings

Table of Contents

Application	TCA Handbook Detail
--------------------	--------------------------------

NOTE: Click the TCA Detail number to navigate to that drawing.

FLOORS, EXTERIOR

Roof Deck	Cement Mortar	F103
Balcony Deck	Thin Set	F104

FLOORS, INTERIOR

Concrete Subfloor	Cement Mortar, Cleavage Membrane	F111
	Cement Mortar, Bonded	F112
	Latex-Portland Cement Mortar	F113
	Cement Mortar, Epoxy Grout	F114
	Latex-Portland Cement Mortar, Epoxy Grout	F115
	Organic Adhesive or Epoxy Adhesive	F116
	Waterproof Membrane - Cement Mortar Bed	F121
	Waterproof Membrane - Thin Set	F122
	Crack Isolation Membrane - Partial Coverage	F125
	Crack Isolation Membrane - Full Coverage	F125A
	Crack Isolation Membrane – Young Concrete, Uncoupling Membrane	F128
	Poured Gypsum Underlayment, Bonded	F200
	Cementitious Self Leveling Underlayment, Bonded	F205
Chemical-Resistant Concrete Subfloor	Epoxy Mortar & Grout	F131
	Epoxy Mortar & Grout on Cementitious Mortar Bed	F132

Table of Contents

Application	TCA Handbook Detail
-------------	------------------------

NOTE: Click the TCA Detail number to navigate to that drawing.

FLOORS, INTERIOR (cont'd)

Radiant Heat on Concrete	Cementitious Self Leveling Underlayment, Hydronic System, Thin Set	RH112
	Latex-Portland Cement Mortar, Electric System	RH115
	Cementitious Self-Leveling Underlayment, Bonded Electric System-Thin-Set	RH116
Radiant Heat on Wood Subfloor	Cementitious Self-Leveling Underlayment	RH123
	EGP Latex-Portland Cement Mortar Electric System	RH130
	Radiant Heat on Wood Subfloor: Backer Board Electric System, Thin Set	RH135
Wood Subfloor	Cement Mortar	F141
	Cementitious Backer Unit/Fiber Cement Underlayment Thin Set	F144
	Cement Mortar Metal Lath	F145
	Plywood Underlayment EGP Latex-Portland Cement Mortar	F150

Table of Contents

Application	TCA Handbook Detail
--------------------	--------------------------------

NOTE: Click the TCA Detail number to navigate to that drawing.

WALLS, EXTERIOR & INTERIOR

Masonry	Cement Mortar	W201
	Dry Set Mortar or Latex Portland Cement	W202
	Wood or Metal Studs, Cement Backer Unit (Exterior)	W244E

WALLS, INTERIOR

Masonry or Concrete	Cement Mortar, Bonded	W211
Solid Backing	Organic Adhesive	W223
Metal Studs	Gypsum Board, Organic Adhesive	W242
Wood or Metal Studs	Gypsum Board, Dry Set or Portland Cement Mortar	W243
	Cement Backer Unit	W244C
	Coated Glass Mat Water-Resistant Gypsum Backer Board	W245
	Cementitious Coated Foam Backer Board	W246
	Fiber-Reinforced Water-Resistant Gypsum Backerboard	W247

Table of Contents

Application	TCA Handbook Detail
--------------------	--------------------------------

NOTE: Click the TCA Detail number to navigate to that drawing.

RENOVATION

Tile Over Tile

TR712

SOUND CONTROL (INTERIOR)

Cork Underlayment
on Concrete

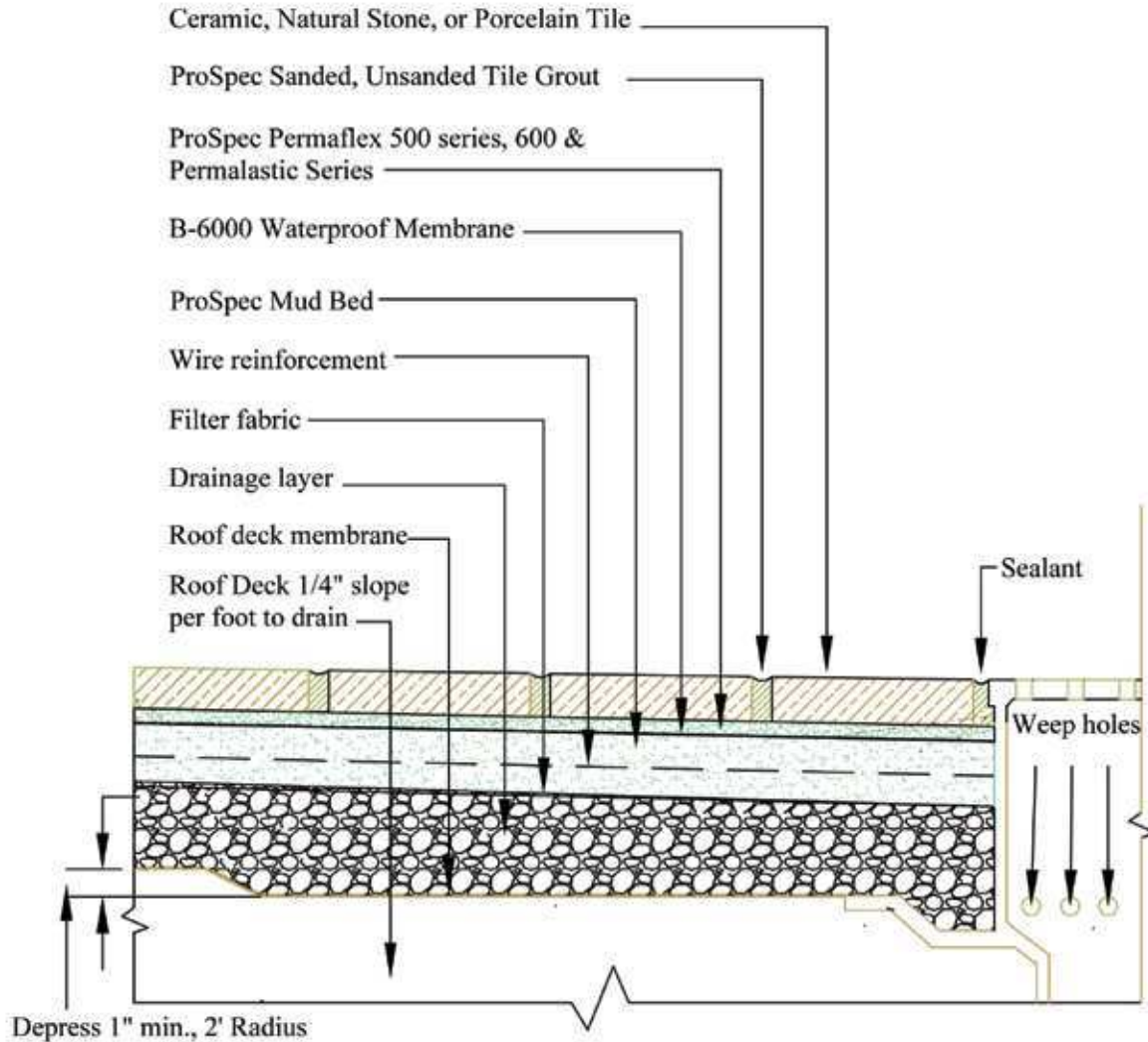
Latex Portland Cement Mortar Epoxy Grout

F135

F103

Floors, Interior/Exterior

Roof Deck Membrane – Cement Mortar



NOTES:

Refer to ProSpec Technical Data Sheet for product installation specifications.

Issue Date
09-02-09

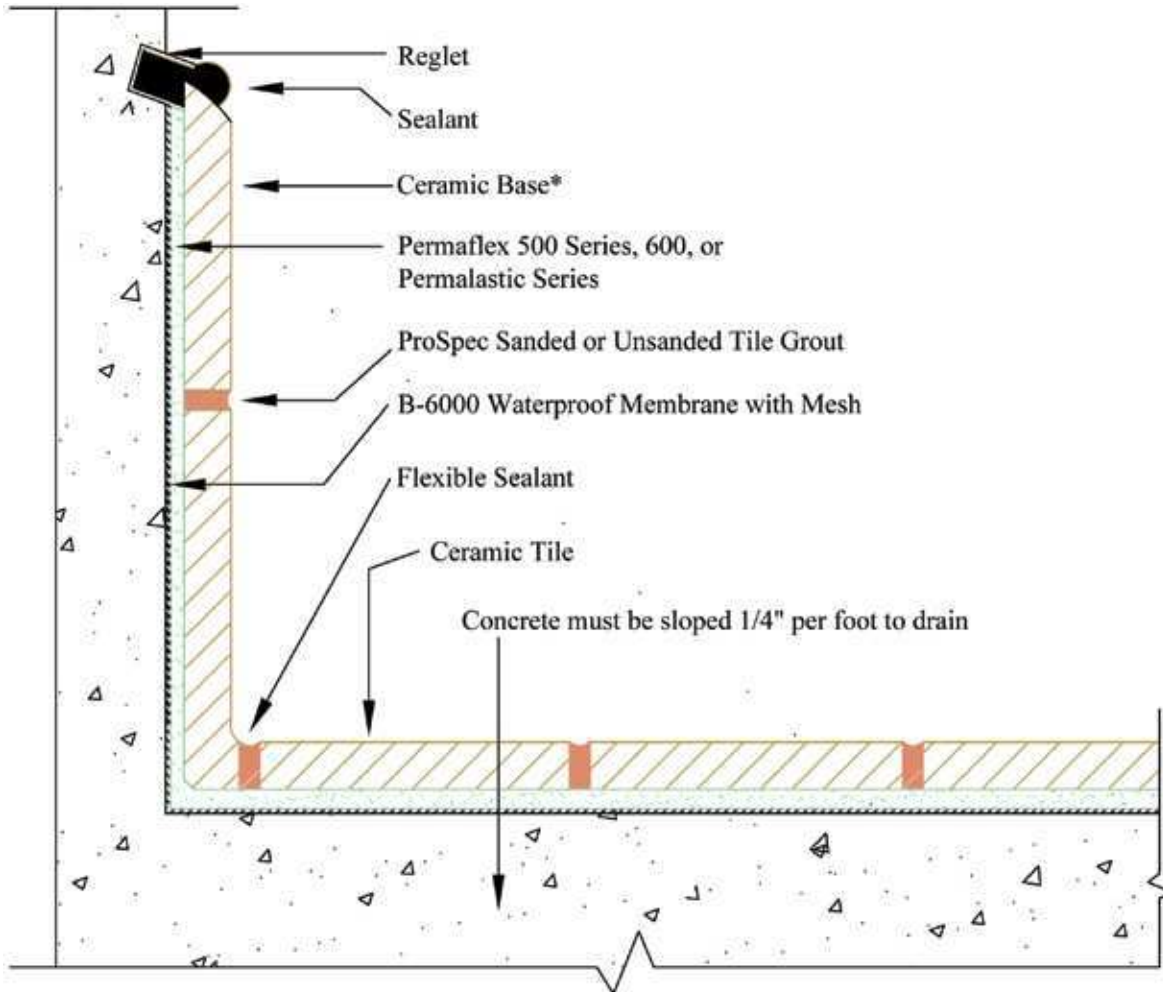
<u>Minimum Requirements:</u>		
Product	ANSI Spec	ISO
Adhesive	118.4	C2- S1
Grout	118.6	CG I
Waterproof Membrane	118.10 - IAPMO Approval	

Drawing Number
F103

F104

Floors, Exterior

Balcony Deck – Thin Set



NOTES:

Refer to ProSpec Technical Data Sheet for product installation specifications.

* Flush cove base assembly shown.

Issue Date

09-02-09

Minimum Requirements:

Product	ANSI Spec	ISO
Adhesive	118.4	C2-S1
Grout	118.7	CG 1
Waterproof Membrane	118.10 - IAPMO Approval	

Drawing Number

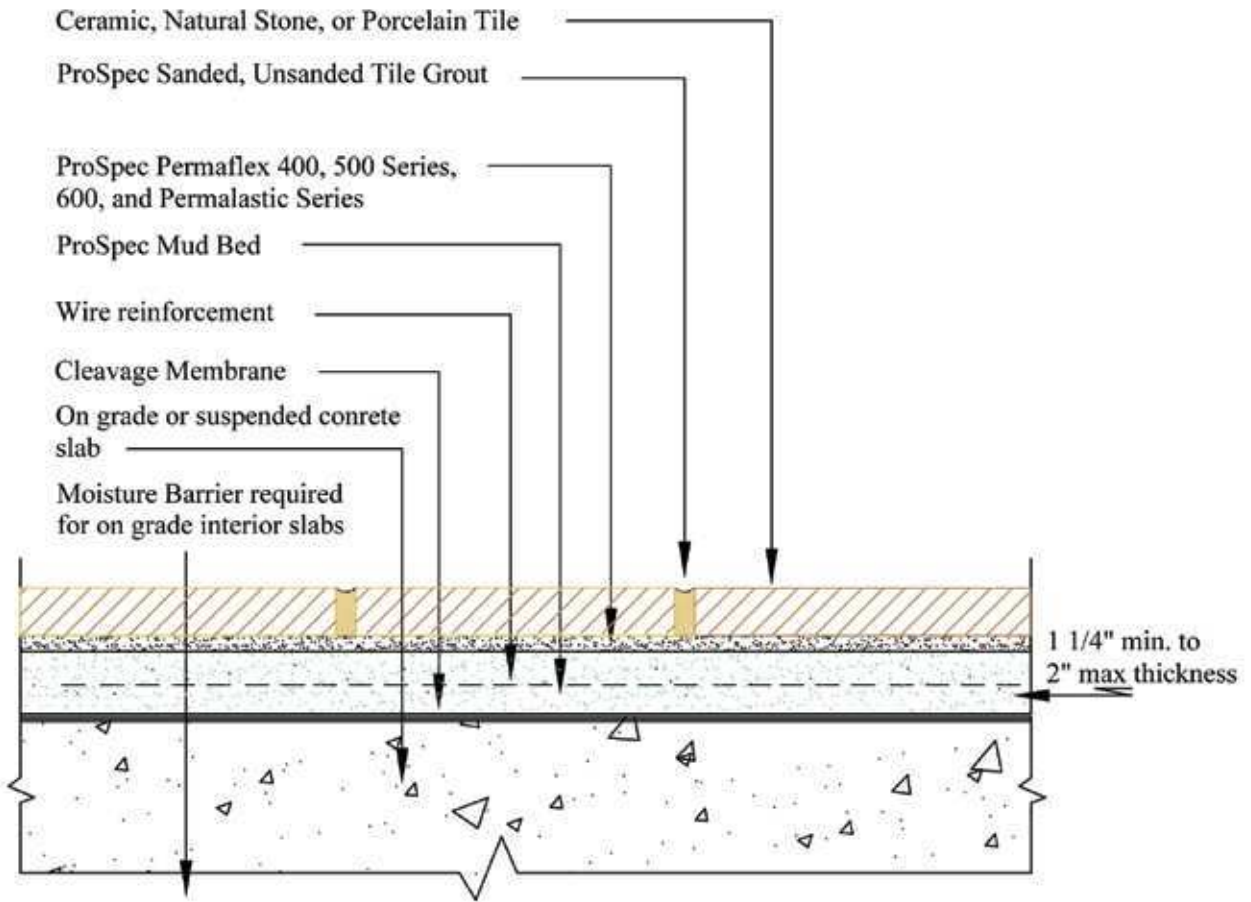
F104

F111



Floors, Interior/Exterior

Concrete Subfloor – Cement Mortar, Cleavage Membrane



NOTES:

Refer to ProSpec Technical Data Sheet for product installation specifications.

Issue Date
09-02-09

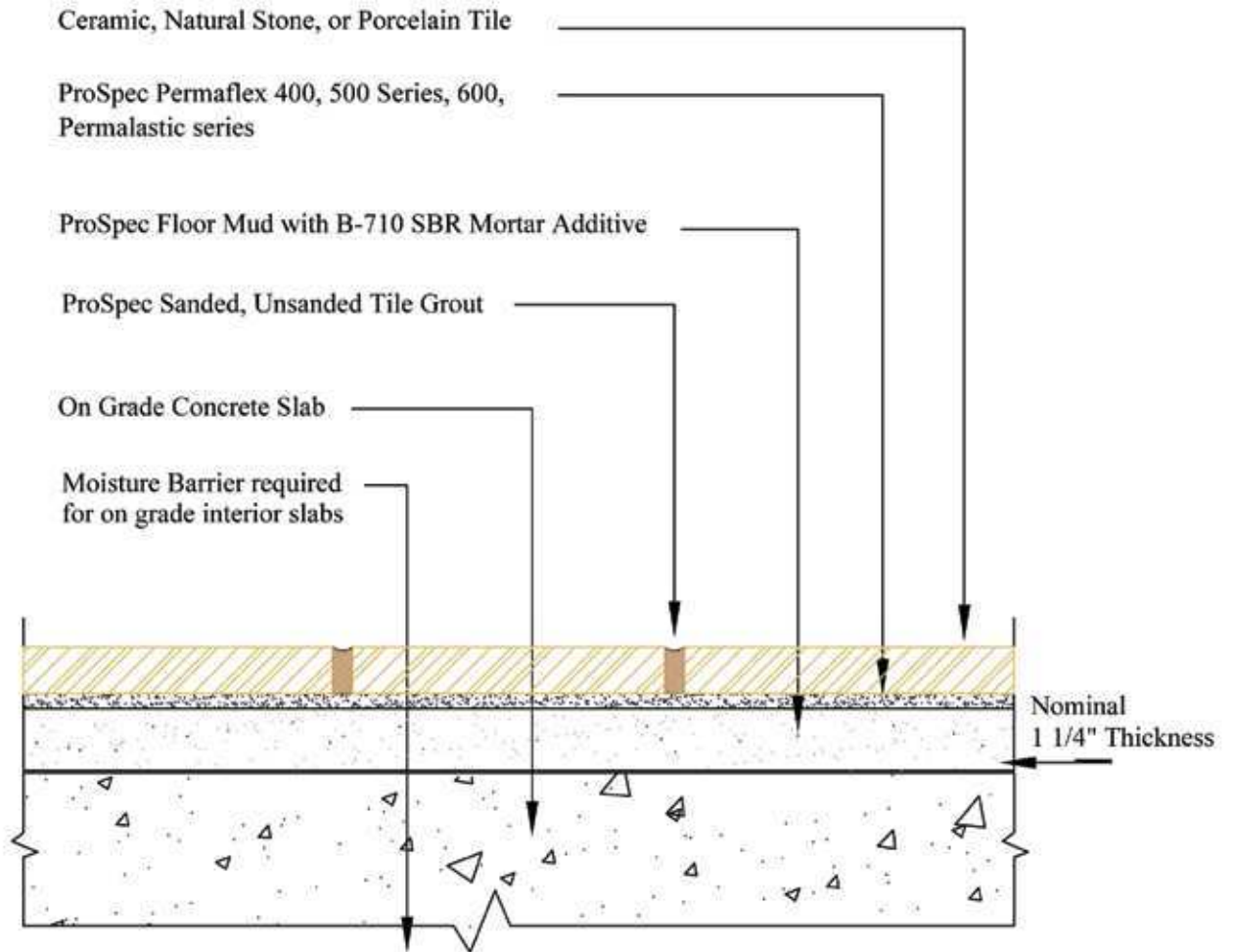
<u>Minimum Requirements:</u>		
Product	ANSI Spec	ISO
Adhesive	118.4	C2
Grout	118.6	CG 1
Waterproof Membrane	118.10 IAPMO Approval	

Drawing Number
F111

F112

Floors, Interior

Cement Mortar – Bonded



NOTES:

Refer to ProSpec Technical Data Sheet for product installation specifications.

Issue Date
09-02-09

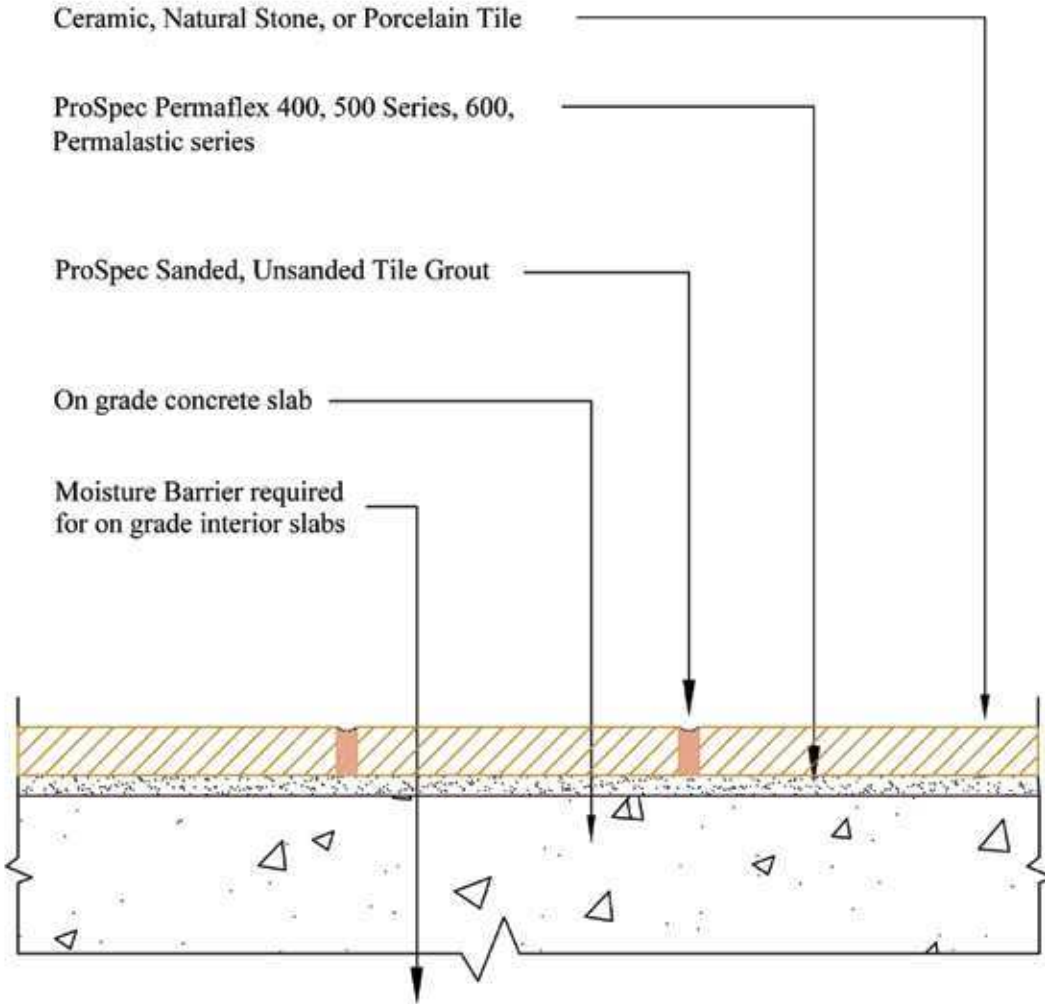
Product	Minimum Requirements:	
	ANSI Spec	ISO
Adhesive	118.4	C2
Grout	118.6	CG 1
Waterproof Membrane	118.10 - IAPMO Approval	

Drawing Number
F112

F113

Floors, Interior

Concrete Subfloor – Latex-Portland Cement Mortar



NOTES:

Refer to ProSpec Technical Data Sheet for product installation specifications.

Issue Date
09-02-09

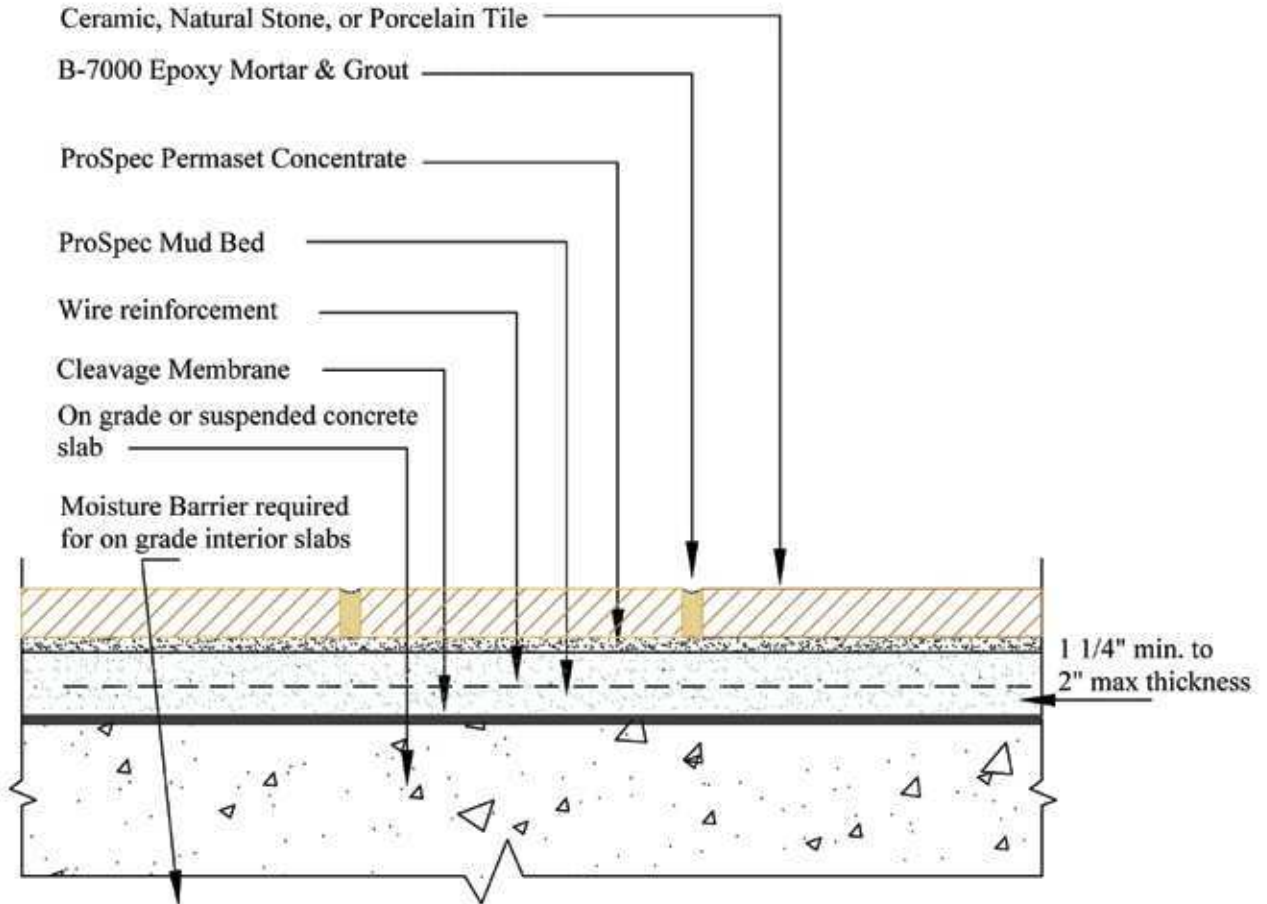
Product	Minimum Requirements:	
	ANSI Spec	ISO
Adhesive	118.4	C2
Grout	118.6	CG 1

Drawing Number
F113

F114

Floors, Interior

Concrete Substrate – Cement Mortar, Epoxy Grout



NOTES:

Refer to ProSpec Technical Data Sheet for product installation specifications.

Issue Date
09-02-09

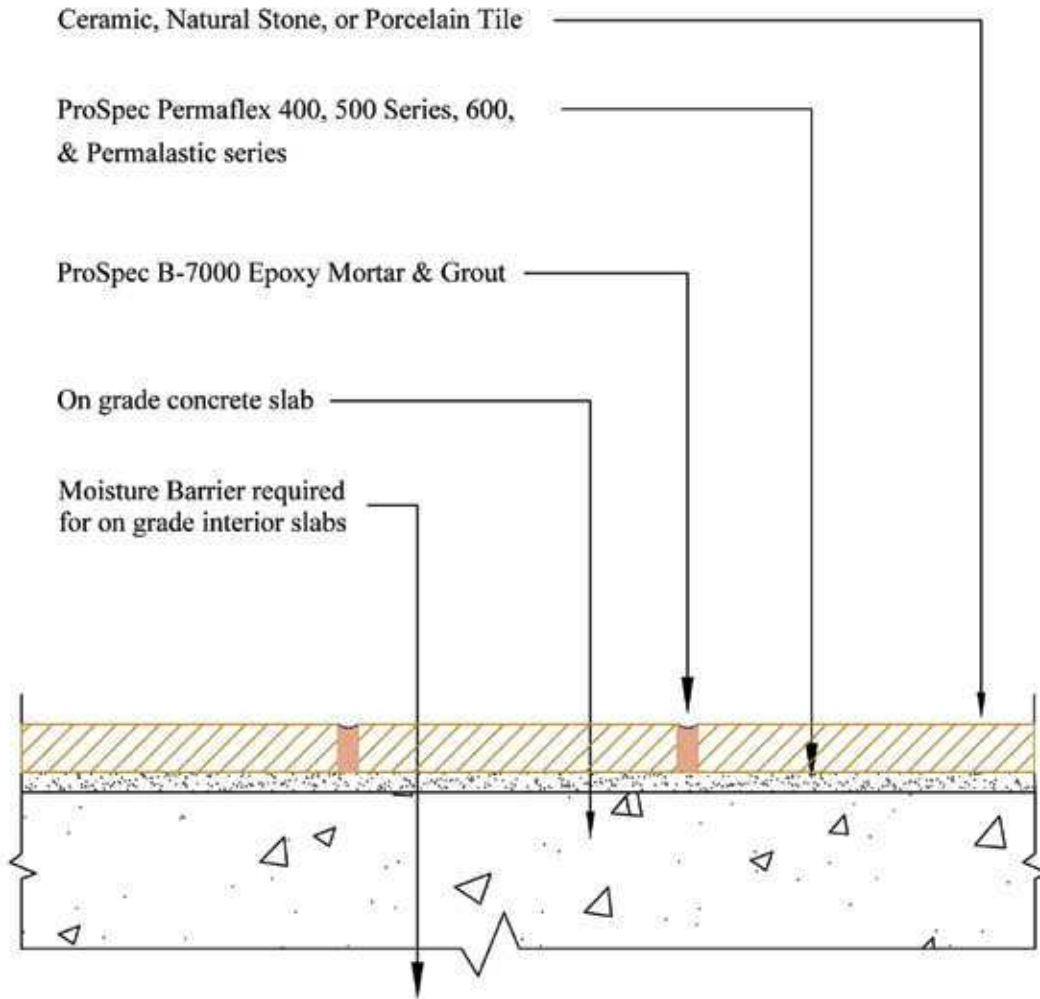
Product	Minimum Requirements:	
	ANSI Spec	ISO
Grout	118.3	RG

Drawing Number
F114

F115

Floors, Interior

Concrete Subfloor – Latex-Portland Cement Mortar, Epoxy Grout



NOTES:

Refer to ProSpec Technical Data Sheet for product installation specifications.

Issue Date

09-02-09

Minimum Requirements:

Product	ANSI Spec	ISO
Adhesive	118.4	C2
Grout	118.3	RG

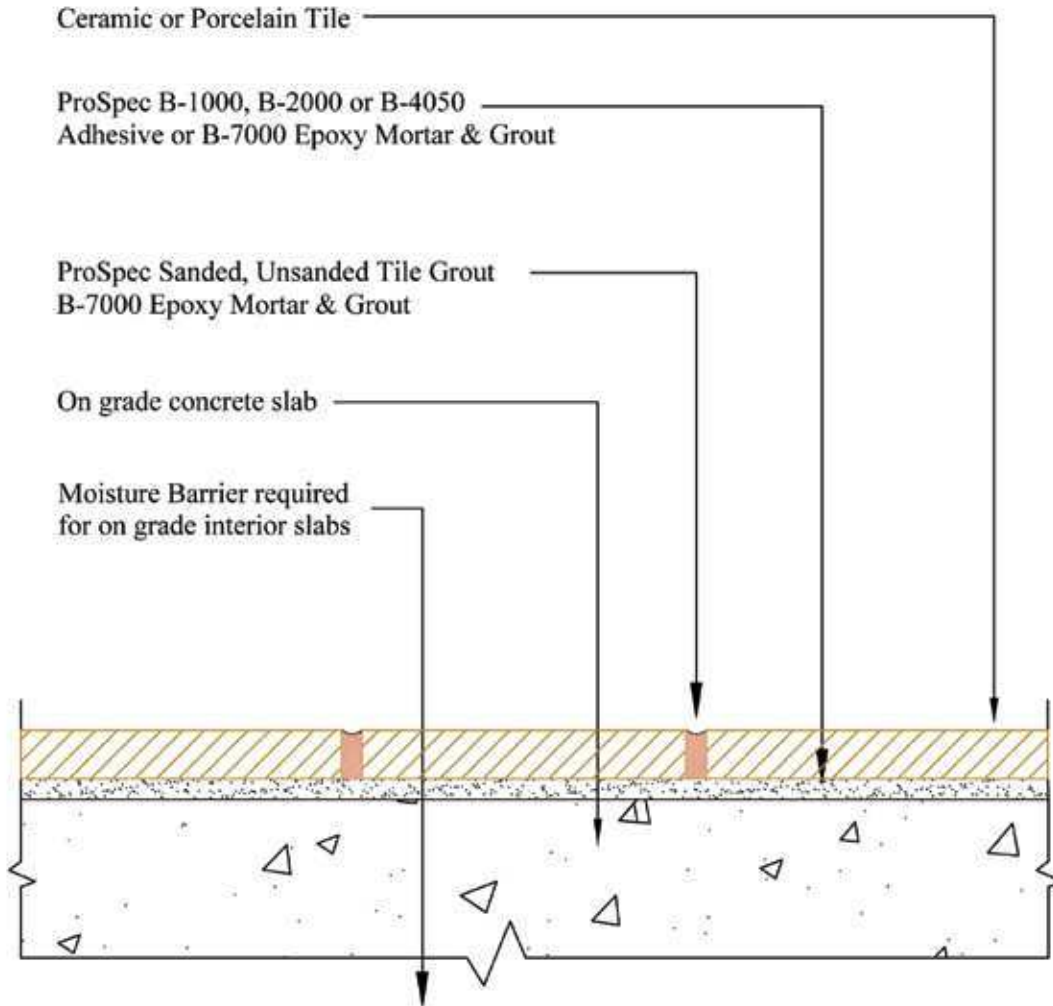
Drawing Number

F115

F116

Floors, Interior

Concrete Subfloor – Organic Adhesive or Epoxy Adhesive



NOTES:

Refer to ProSpec Technical Data Sheet for product installation specifications.

Maximum Tile size for B-1000 is 8" x 8". Maximum Tile size for B-2000 & b-4050 12" x 12".

Issue Date
09-02-09

Product	Minimum Requirements:	
	ANSI Spec	ISO
Adhesive	136.1 or 118.3	D1 or R1
Grout	118.3 - 118.6	RG - CG1

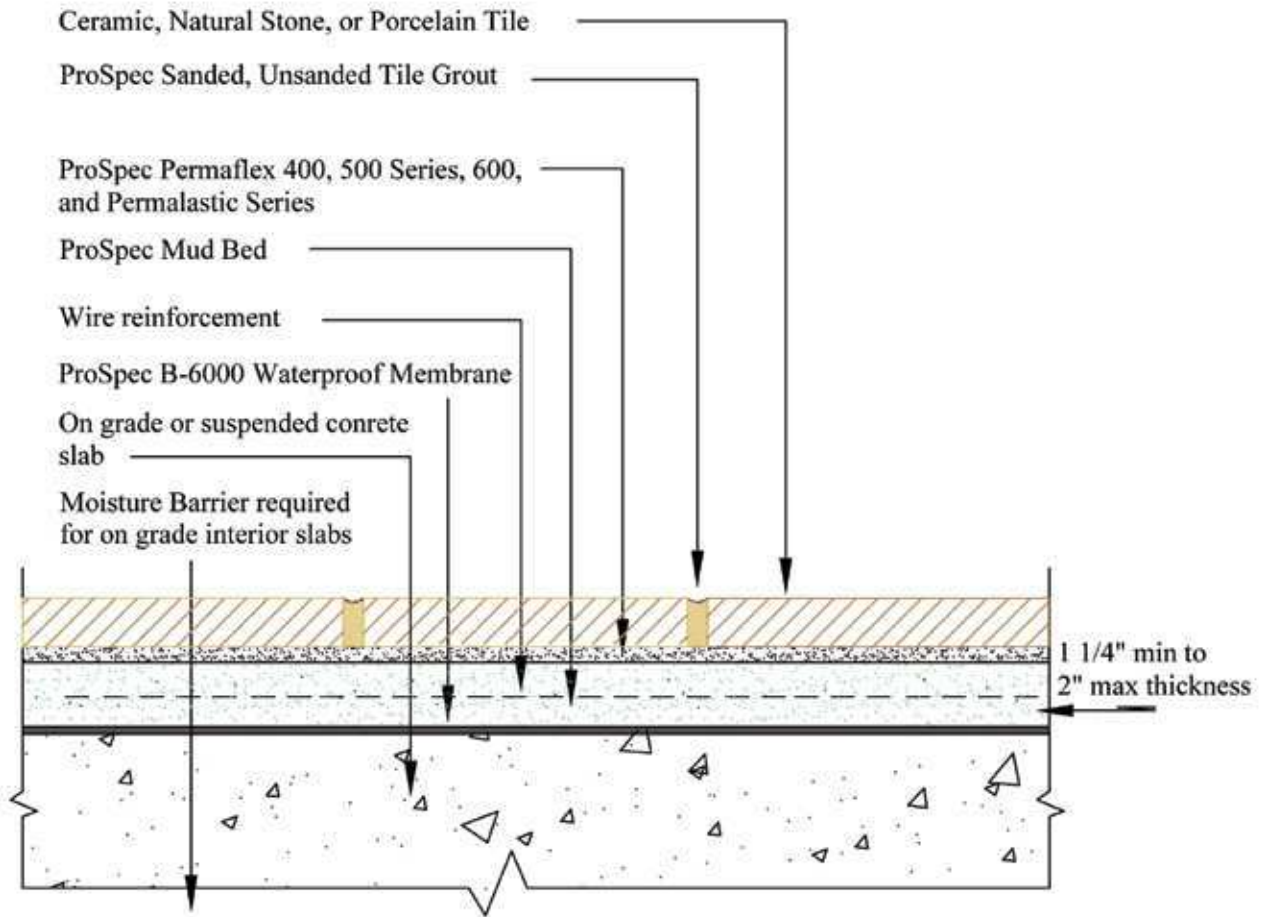
Drawing Number
F116

F121



Floors, Interior

Concrete Subfloor – Waterproof Membrane, Cement Mortar Bed



NOTES:

Refer to ProSpec Technical Data Sheet for product installation specifications.

Issue Date
09-02-09

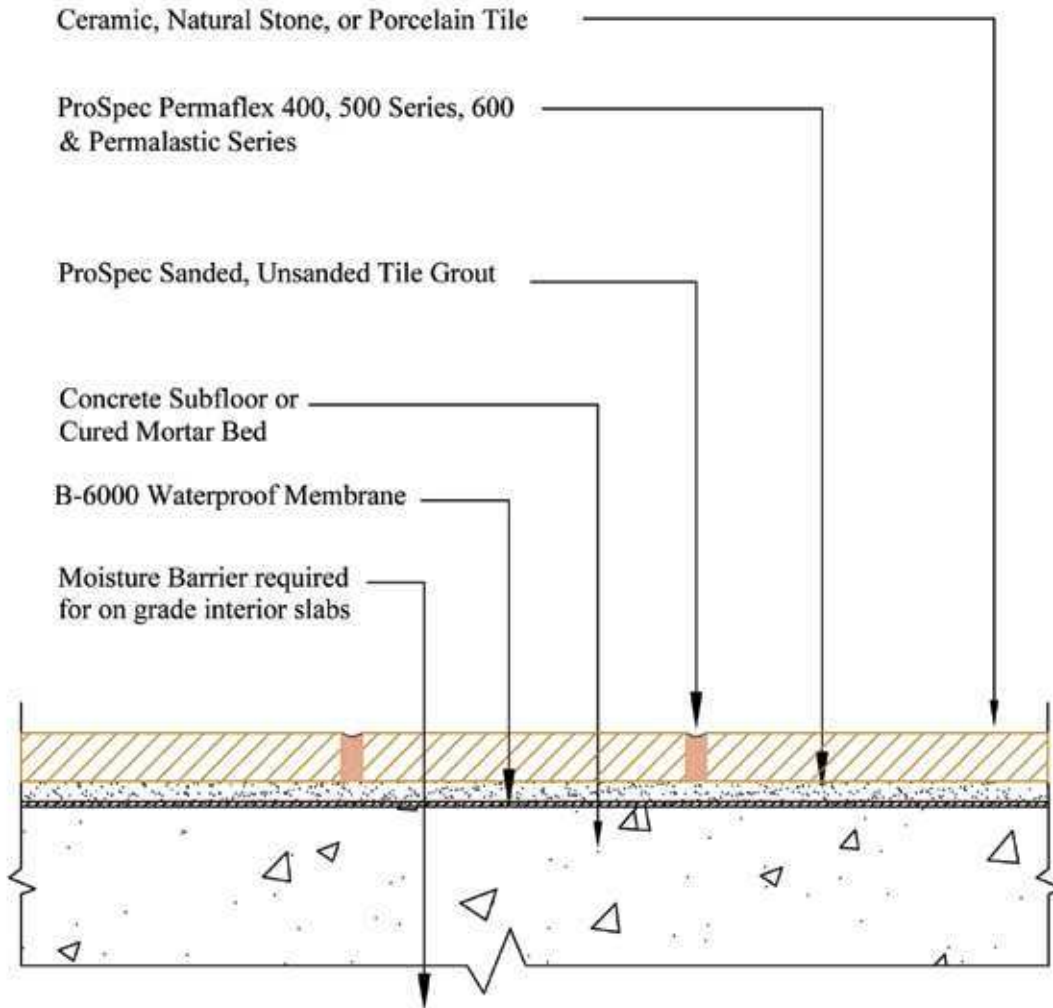
<u>Minimum Requirements:</u>		
<u>Product</u>	<u>ANSI Spec</u>	<u>ISO</u>
Adhesive	118.4	C2
Grout	118.6	CG 1
Waterproof Membrane	118.10 - IAPMO Approval	

Drawing Number
F121

F122

Floors, Interior

Concrete Subfloor – Waterproof Membrane, Thin Set



NOTES:

Refer to ProSpec Technical Data Sheet for product installation specifications.

Issue Date

09-04-09

Minimum Requirements:

Product	ANSI Spec	ISO
Adhesive	118.4	C2
Grout	118.7	CG 1
Waterproof Membrane	118.10 - IAPMO Approval	

Drawing Number

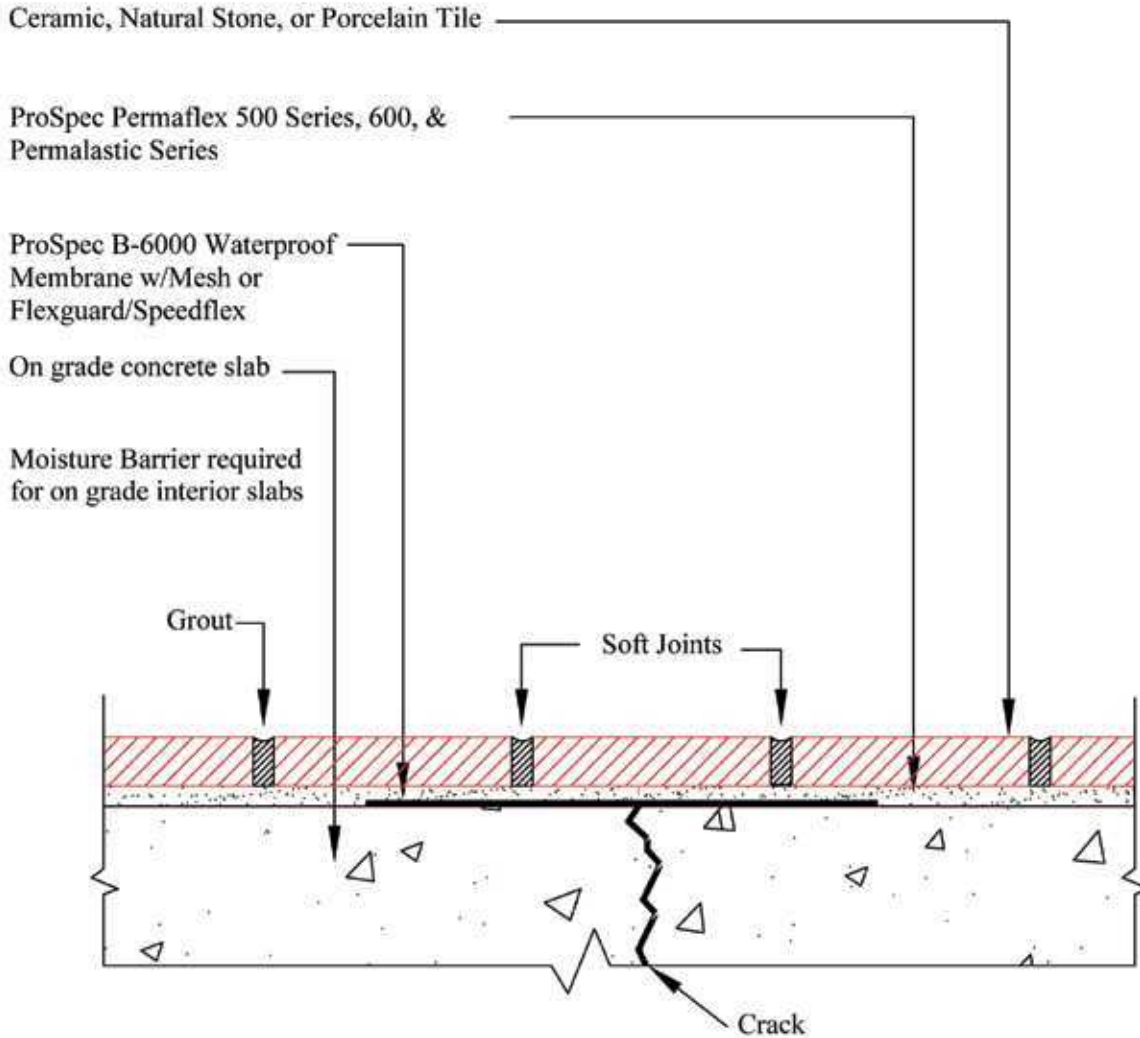
F122

F125



Floors, Interior

Crack Isolation Membrane – Partial Coverage



NOTES:

Refer to ProSpec Technical Data Sheet for product installation specifications.

Issue Date

09-04-09

Minimum Requirements:

Product	ANSI Spec	ISO
Adhesive	118.4	C2-S1
Grout	118.7	CG 1
Crack Isolation Mem	118.12	

Drawing Number

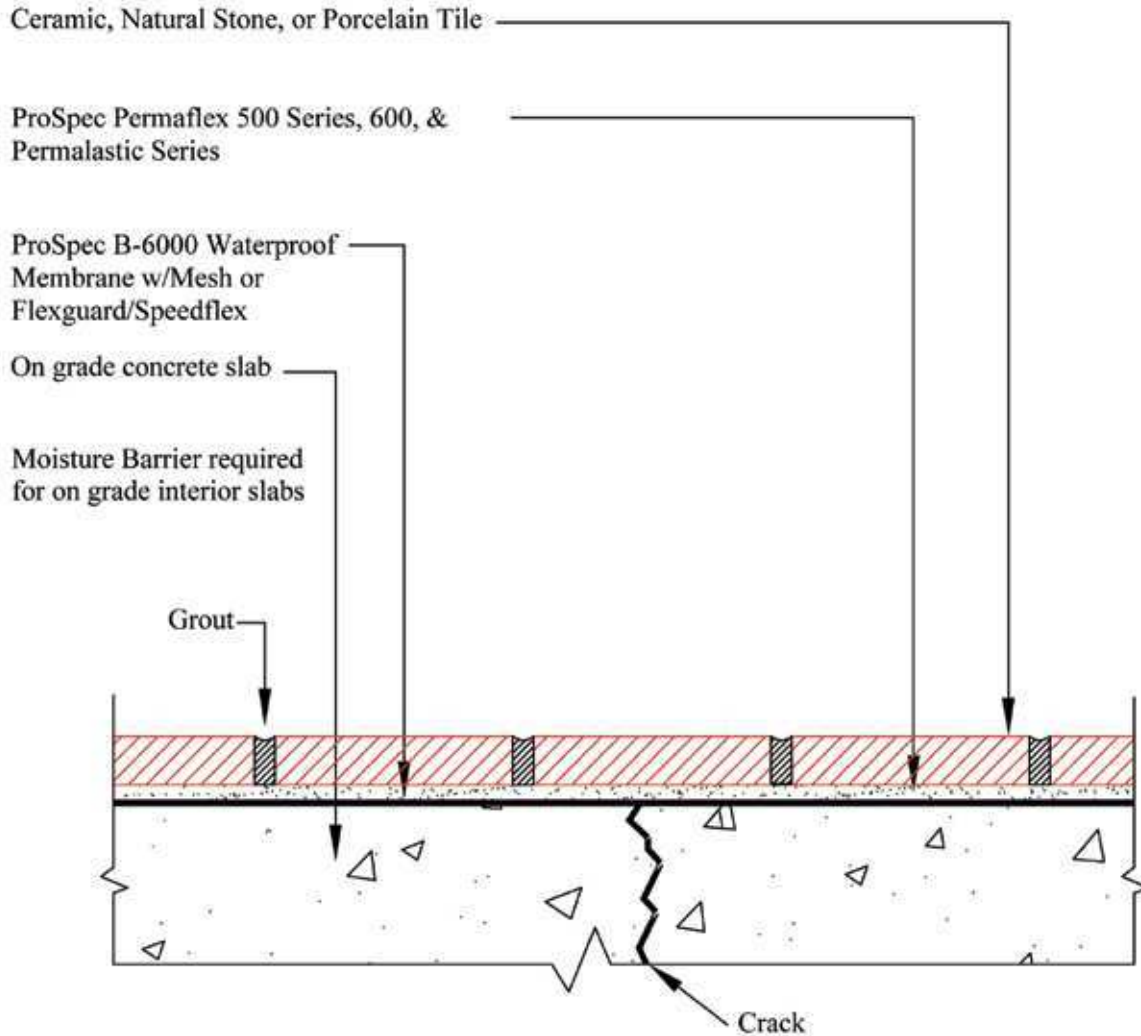
F125

F125A



Floors, Interior

Crack Isolation – Full Coverage



NOTES:

Refer to ProSpec Technical Data Sheet for product installation specifications.

Issue Date

09-04-09

Minimum Requirements:

Product	ANSI Spec	ISO
Adhesive	118.4	C2-S1
Grout	118.7	CG 1
Crack Isolation Mem	118.12	

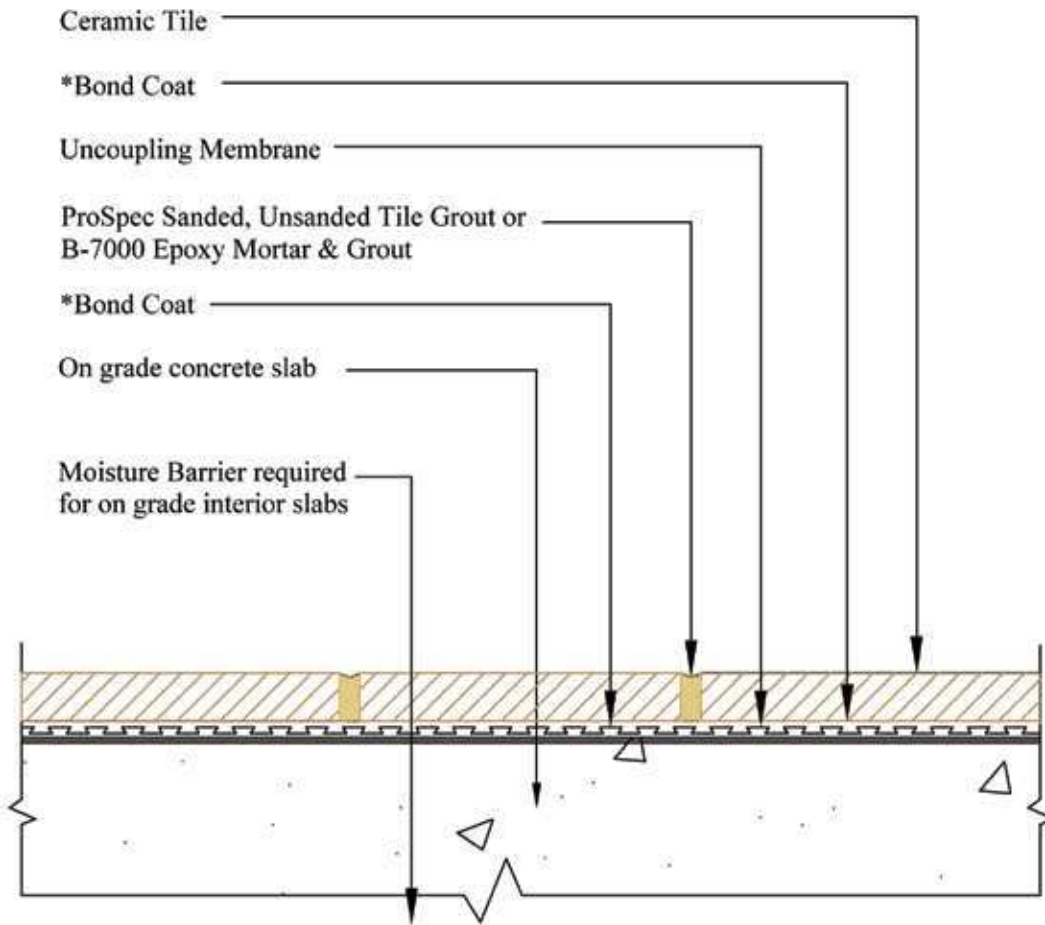
Drawing Number

F125A

F128

Floors, Interior

Crack Isolation Membrane – Young Concrete, Uncoupling Membrane



NOTES:

Refer to ProSpec Technical Data Sheet for product installation specifications.

* Refer to coupling manufacturer's recommendation for use of thin set mortar

Issue Date
09-04-09

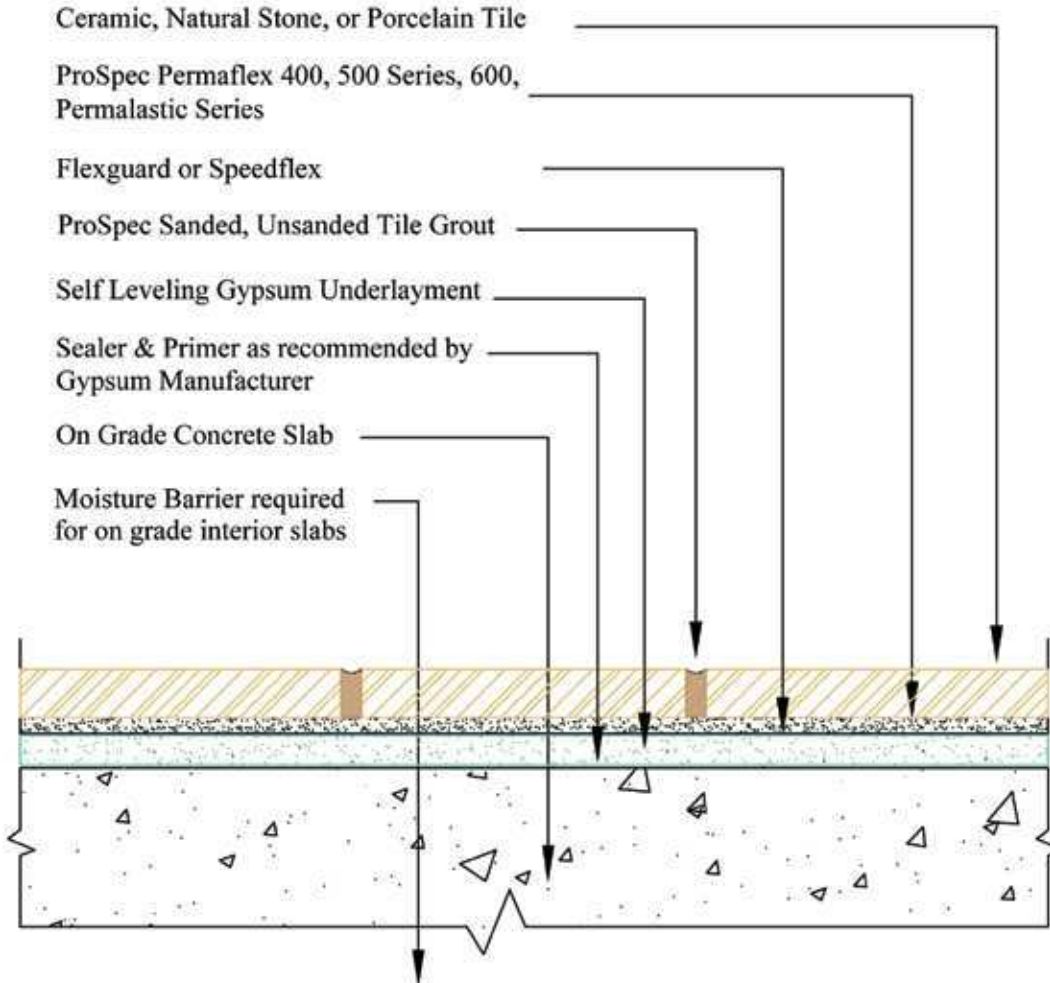
Product	Minimum Requirements:	
	ANSI Spec	ISO
Adhesive	Manufacturer's recommendation	
Grout	118.3 - 118.7	CG1 - RG

Drawing Number
F128

F200

Floors, Interior

Concrete Subfloor – Poured Gypsum Underlayment, Bonded



NOTES:

Refer to ProSpec Technical Data Sheet for product installation specifications.

Issue Date

09-08-09

Minimum Requirements:

Products	ANSI Spec	ISO
Adhesives	118.4	C2
Grout	118.6	CG 1
Waterproof Membrane	118.10 - IAPMO Approval	

Drawing Number

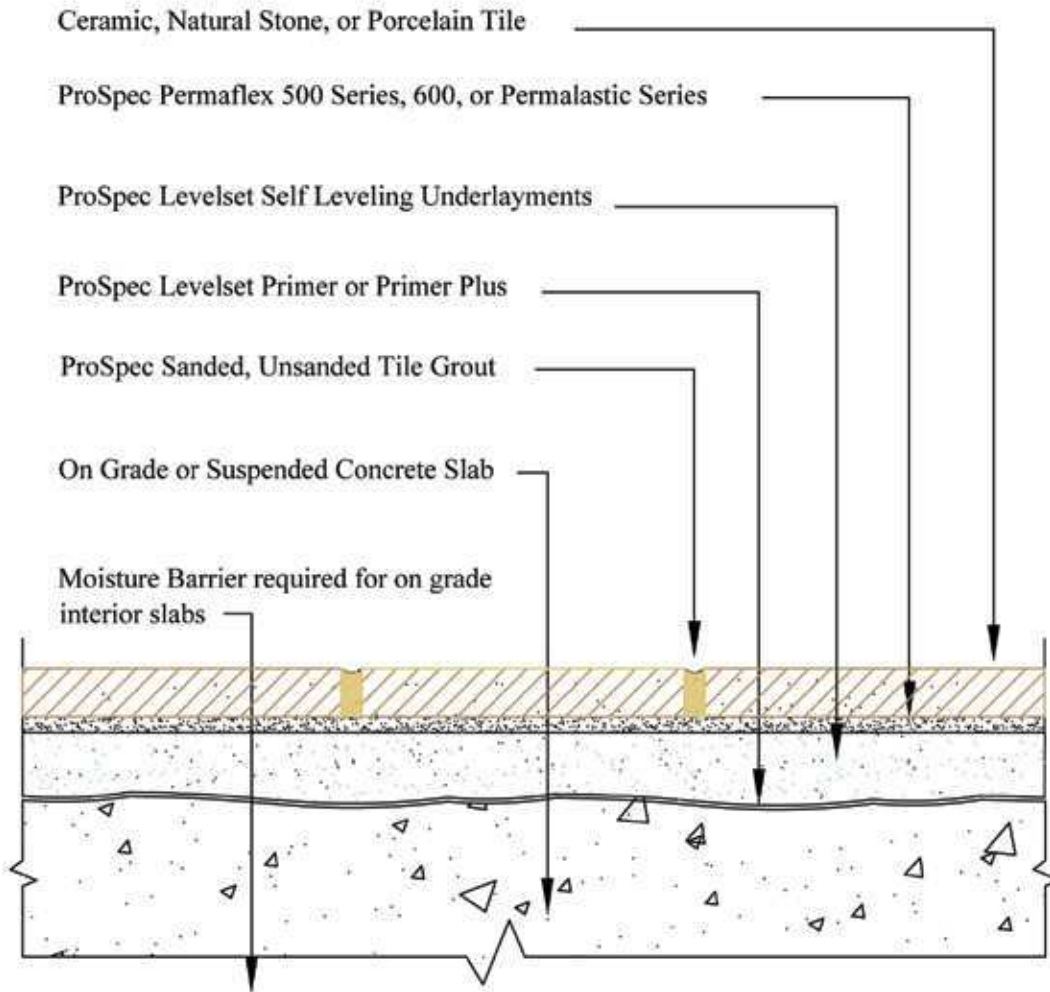
F200

F205



Floors, Interior

Concrete Subfloor – Cementitious Self Leveling Underlayment, Bonded



NOTES:

Refer to ProSpec Technical Data Sheet for product installation specifications.

Issue Date

09-08-09

Minimum Requirements:

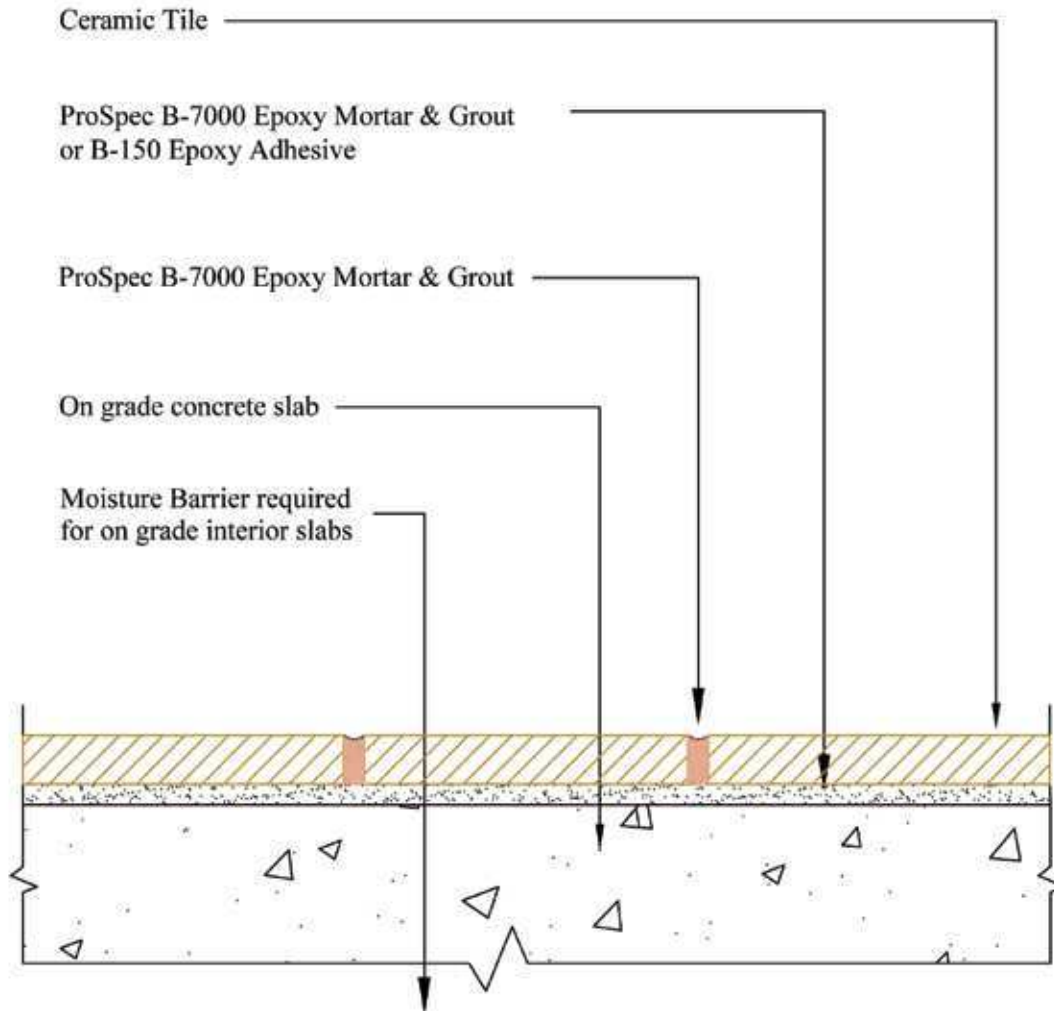
Product	ANSI Spec	ISO
Adhesive	118.4	C2-S1
Grout	118.6	CG 1

Drawing Number

F205

F131

Floors, Interior – Chemical Resistant Concrete Subfloor – Epoxy Mortar and Grout



NOTES:

Refer to ProSpec Technical Data Sheet for product installation specifications.

Issue Date

09-08-09

Minimum Requirements:

Product	Minimum Requirements:	
	ANSI Spec	ISO
Adhesive	118.3	R
Grout	118.3	RG

Drawing Number

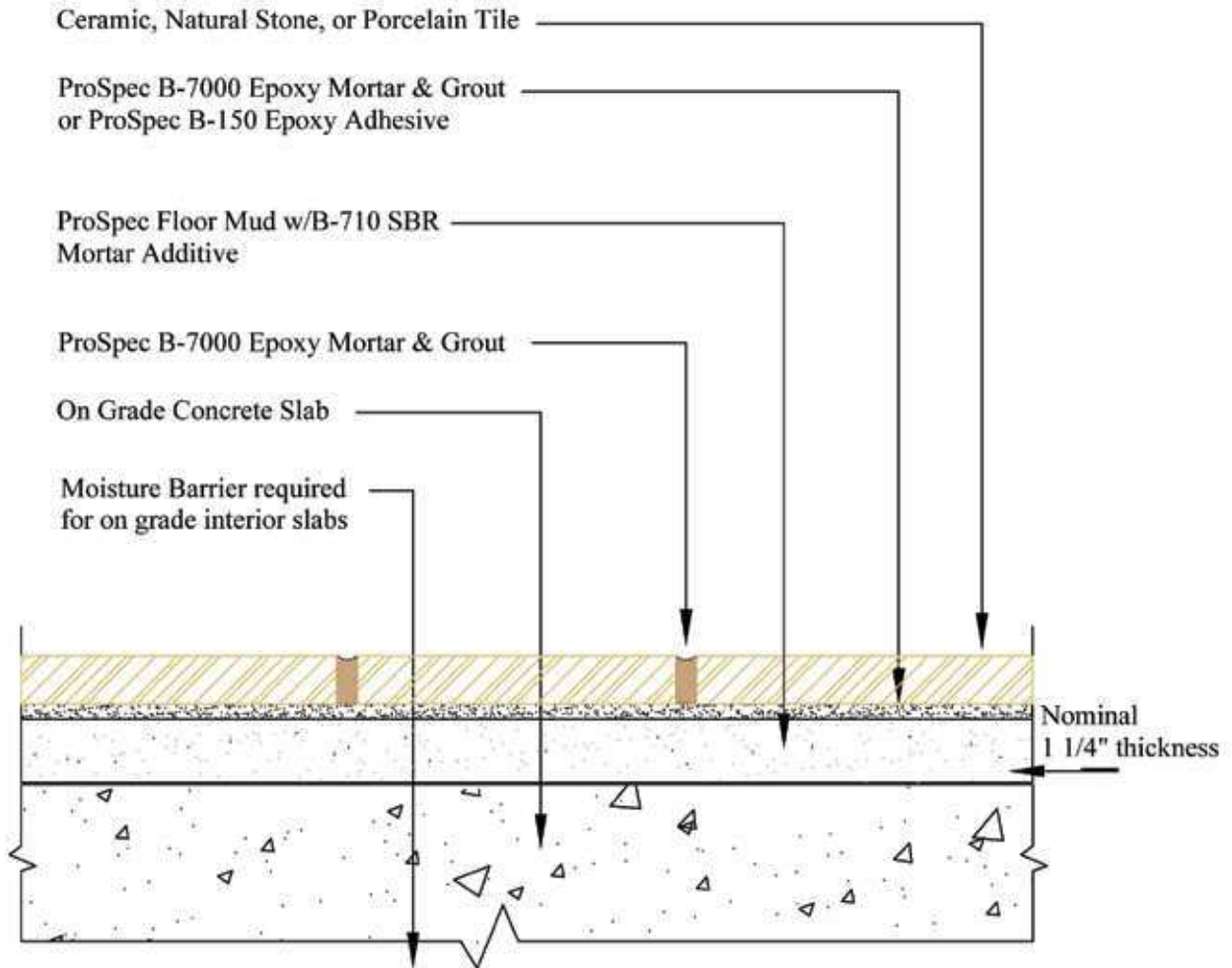
F131

F132



Floors, Interior – Chemical Resistant

Concrete Subfloor – Epoxy Mortar and Grout on a Cementitious Mortar Bed



NOTES:

Refer to ProSpec Technical Data Sheet for product installation specifications.

Issue Date
09-08-09

Product	Minimum Requirements:	
	ANSI Spec	ISO
Adhesive	118.3	R
Grout	118.3	RG

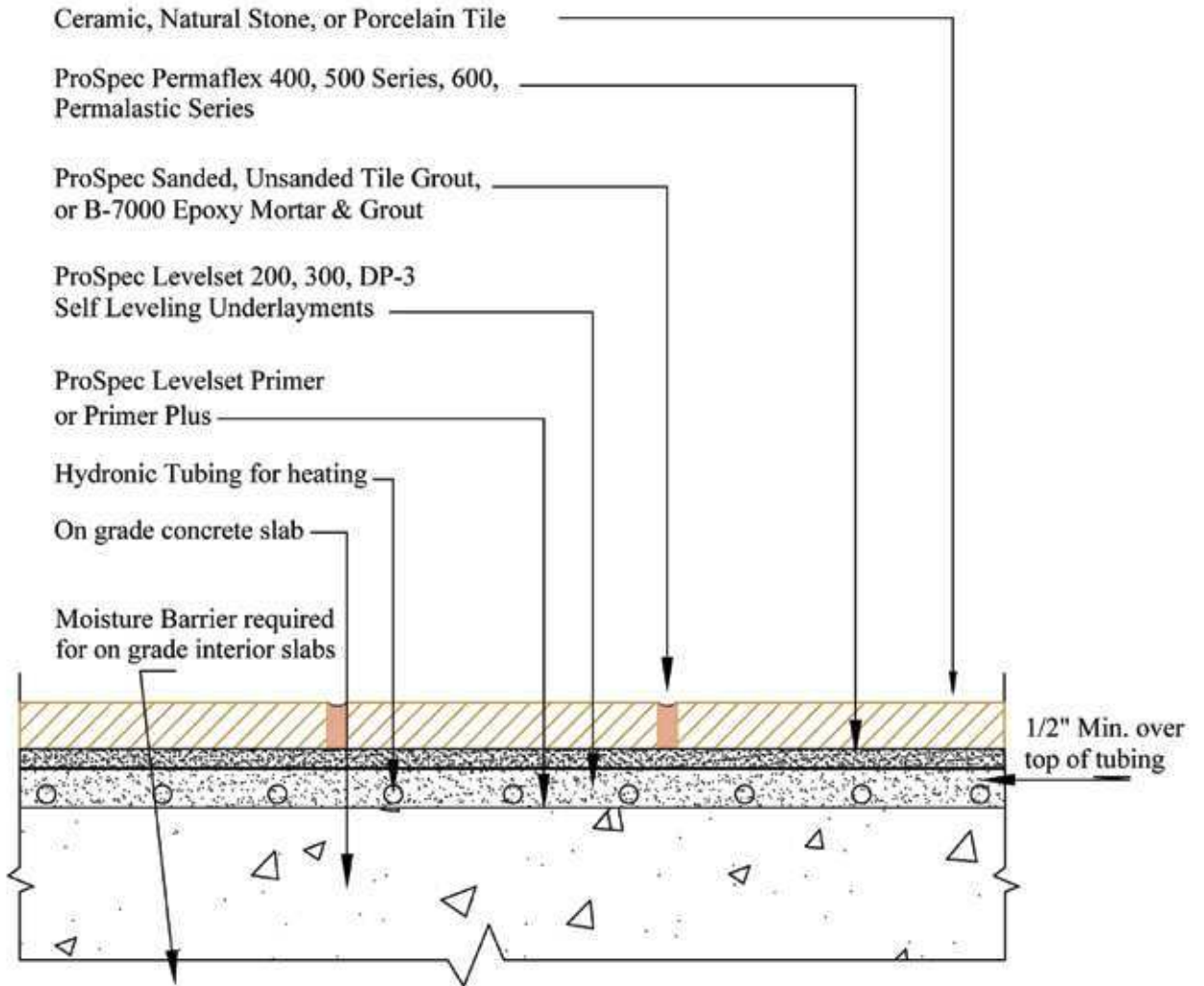
Drawing Number
F132

RH112



Floors, Interior

Radiant Heat on Concrete: Cementitious Self-Leveling Underlayment, Hydronic System, Thin Set



NOTES:

Refer to ProSpec Technical Data Sheet for product installation specifications.

Issue Date
09-08-09

<u>Minimum Requirements:</u>		
<u>Products</u>	<u>ANSI Spec</u>	<u>ISO</u>
Adhesive	118.4	C2
Grout	118.3 - 118.6	RG - CG1

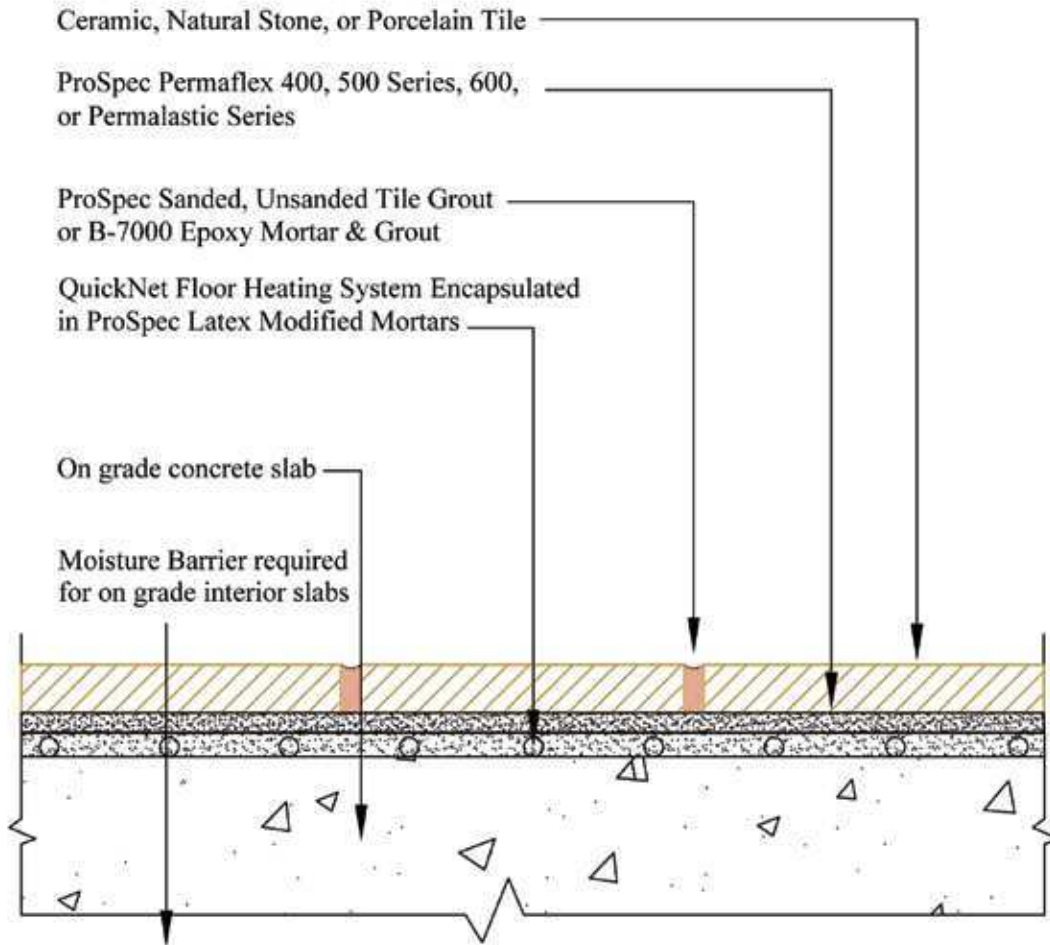
Drawing Number
RH112

RH115



Floors, Interior

Radiant Heat on Concrete – Latex-Portland Cement Mortar, Electric System



NOTES:

Refer to ProSpec Technical Data Sheet for product installation specifications.

Issue Date
09-08-09

Products	Minimum Requirements:	
	ANSI Spec	ISO
Adhesive	118.4	C2
Grout	118.3 - 118.6	RG - CG1

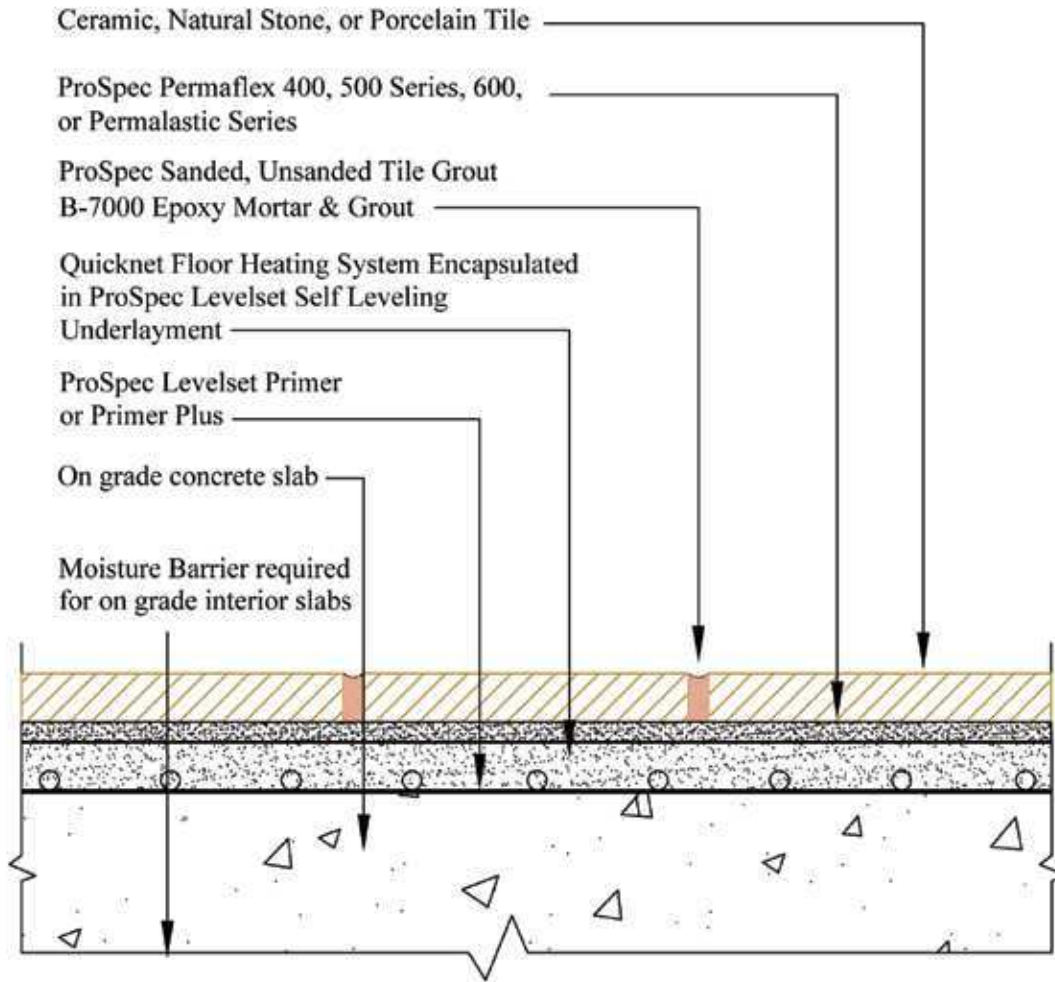
Drawing Number
RH115

RH116



Floors, Interior

Radiant Heat on Concrete: Cementitious Self-Leveling Underlayment, Bonded Electric System, Thin Set



NOTES:

Refer to ProSpec Technical Data Sheet for product installation specifications.

Issue Date

09-08-09

Minimum Requirements:

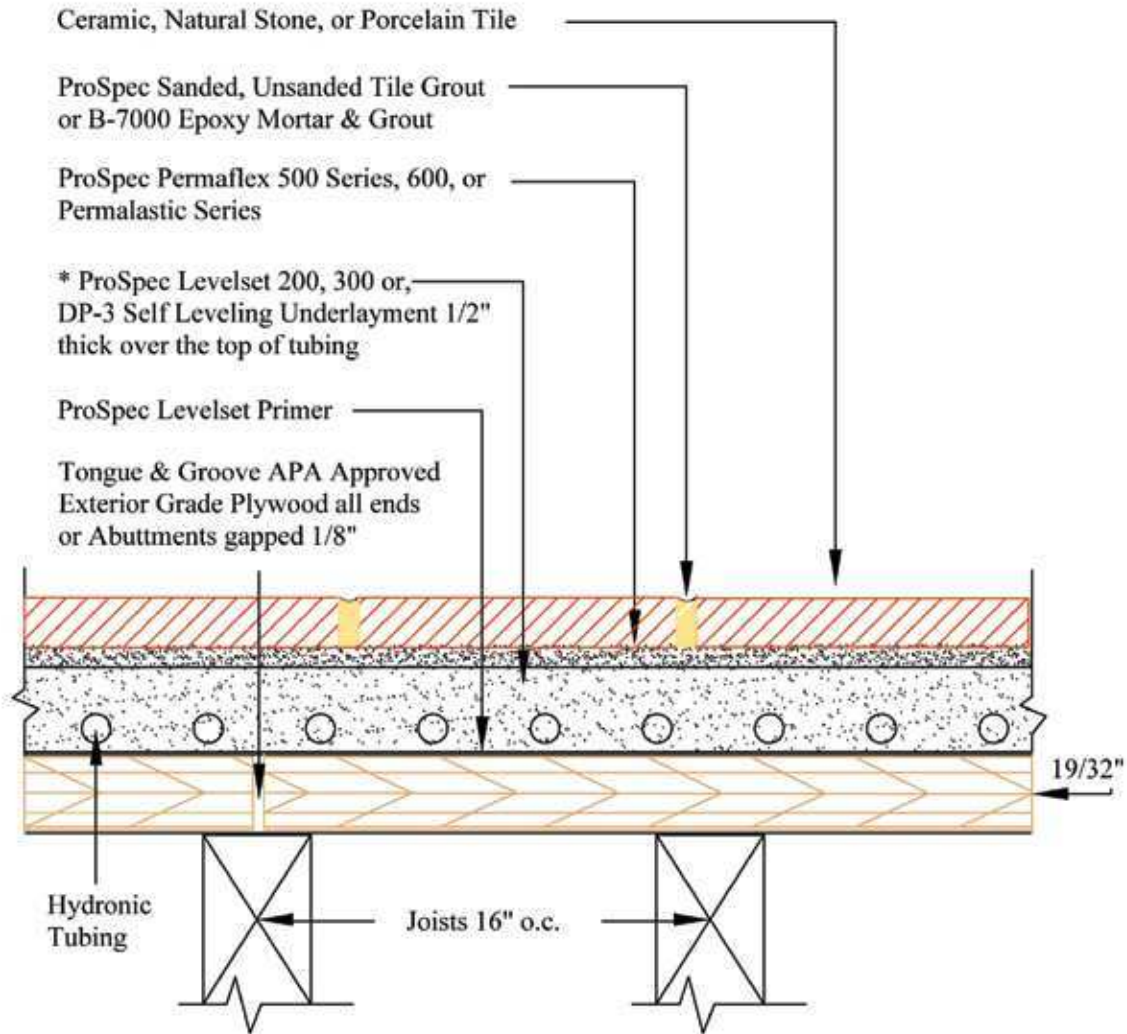
Product	ANSI Spec	ISO
Adhesive	118.4	C2
Grout	118.3 - 118.6	RG - CG1

Drawing Number

RH116

Floors, Interior

Radiant Heat on Wood Subfloor – Cementitious Self Leveling Underlayment



NOTES:

Refer to ProSpec Technical Data Sheet for product installation specifications.

* Add Levelset Primer to Levelset Self Leveling Underlayment over wood floors as specified in the product Technical Data Sheet.

Issue Date

09-08-09

Minimum Requirements:

Product	ANSI Spec	ISO
Adhesive	118.4	C2-S1
Grout	118.3 - 118.6	RG - CG1

Drawing Number

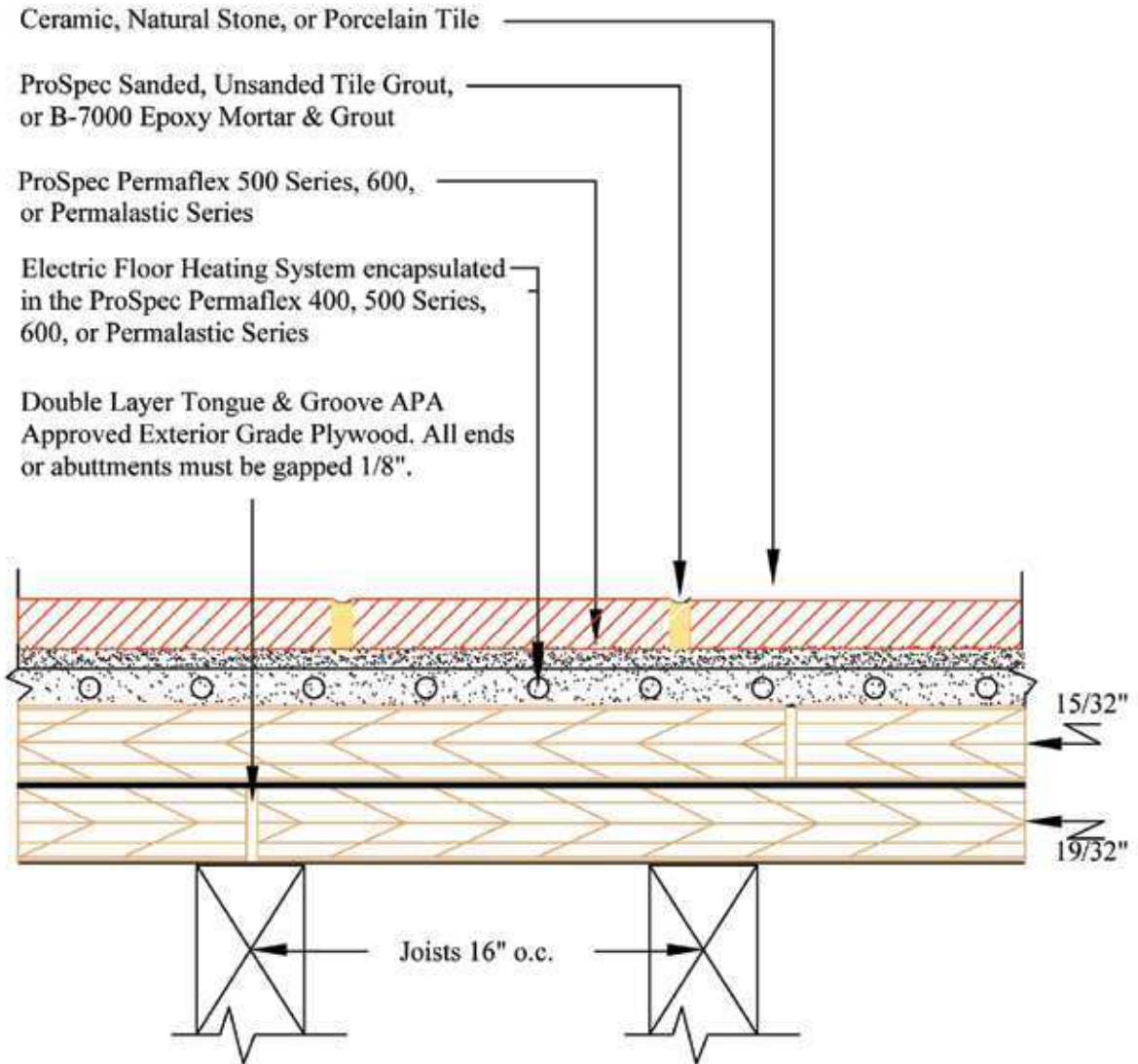
RH123

RH130



Floors, Interior – Dry Applications

Radiant Heat on Wood Subfloor: EGP (Exterior Glue Plywood) Latex-Portland Cement Mortar Electric System



NOTES:

Refer to ProSpec Technical Data Sheet for product installation specifications.

Issue Date

09-08-09

Minimum Requirements:

Product	ANSI Spec	ISO
Adhesive	118.11	C2-S1-P1
Grout	118.3 - 118.6	RG - CG1

Drawing Number

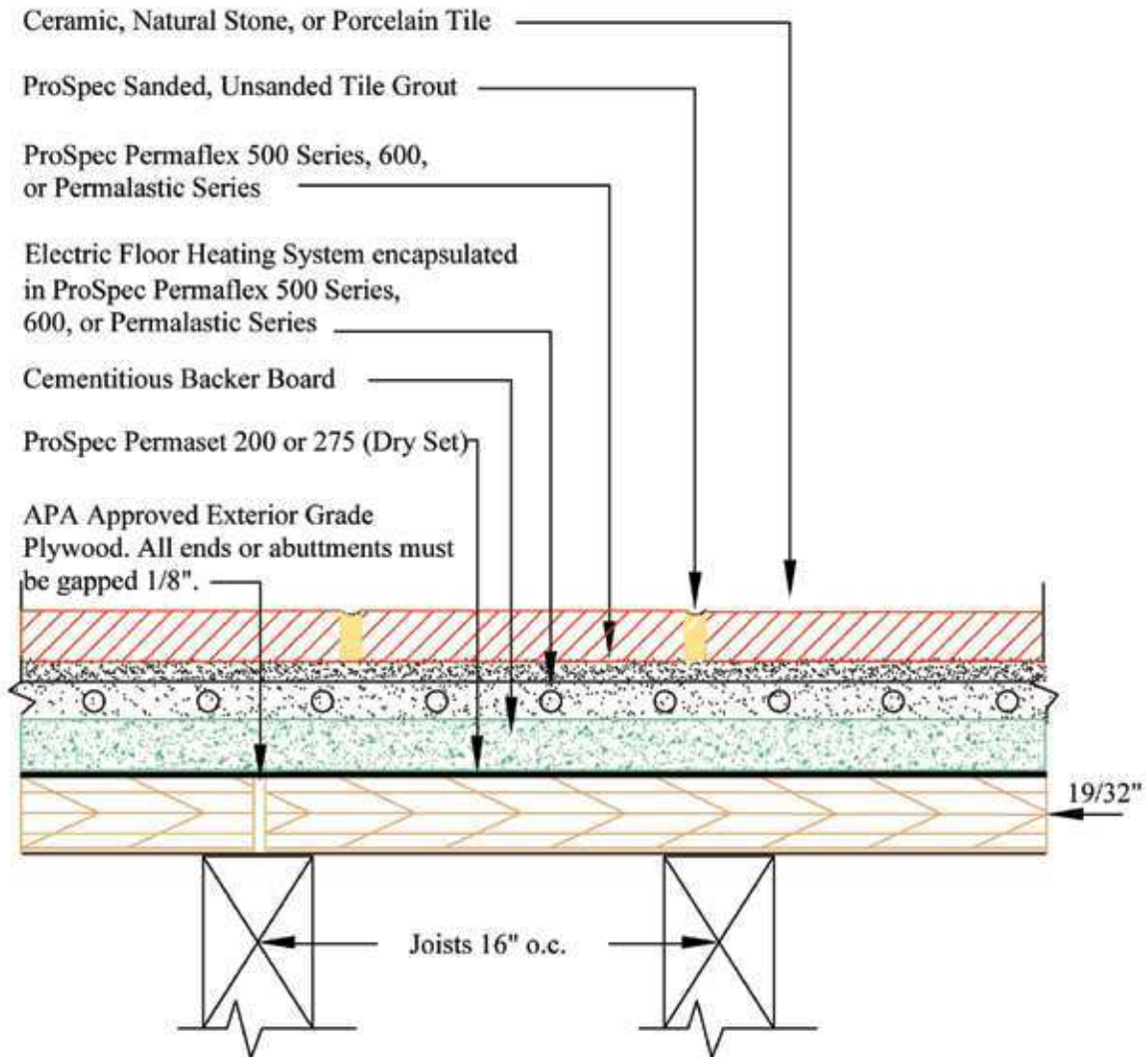
RH130

RH135



Floors, Interior – Dry Applications

Radiant Heat on Wood Subfloor: Backer Board Electric System, Thin Set



NOTES:

Refer to ProSpec Technical Data Sheet for product installation specifications.

Issue Date
09-10-09

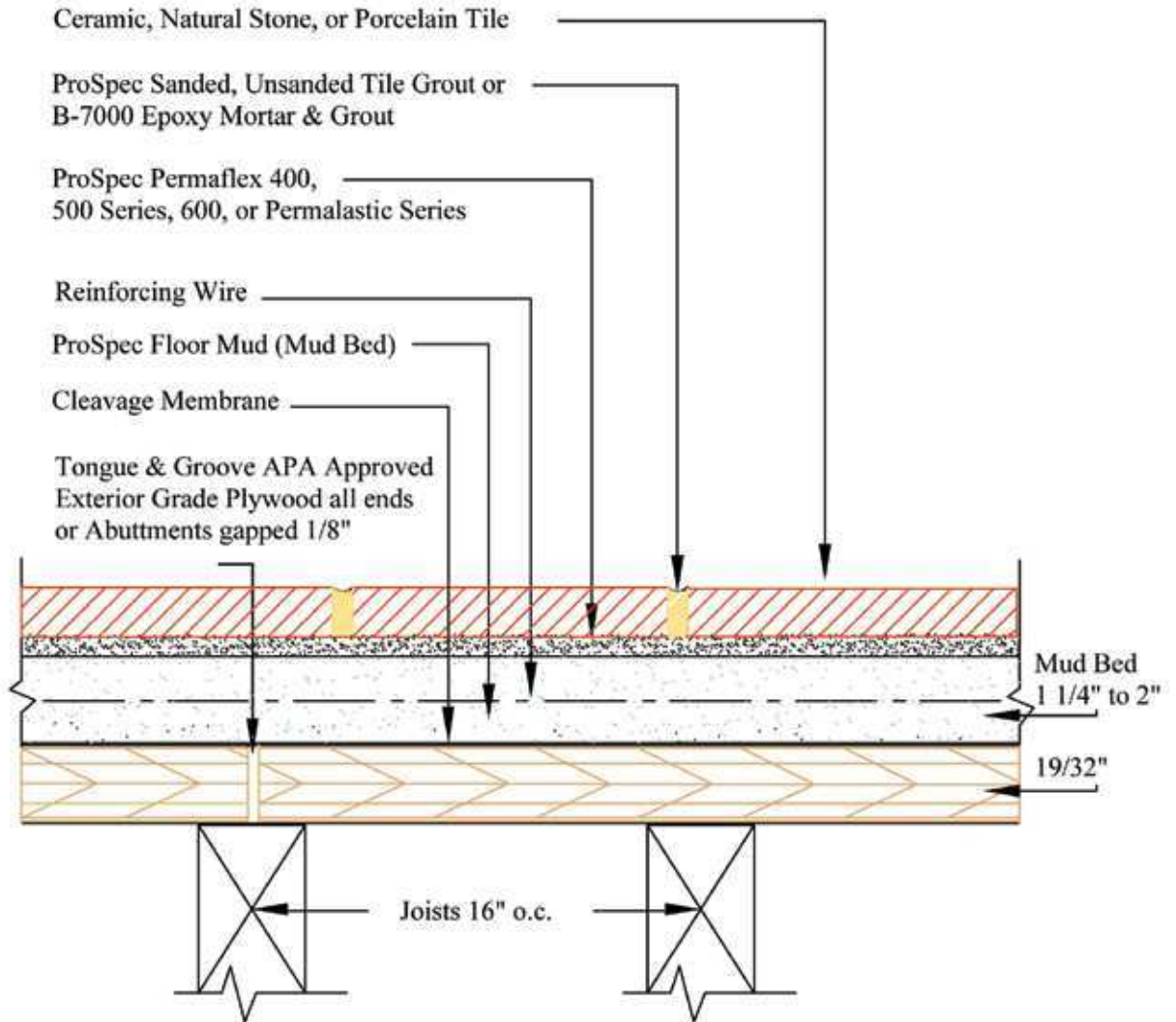
Minimum Requirements:		
Product	ANSI Spec	ISO
Adhesive	118.4	C2-S1
Grout	118.3 - 118.6	RG - CG1
Backer Board Setting bed	118.1	C1

Drawing Number
RH135

F141

Floors, Interior

Wood Subfloor – Cement Mortar



NOTES:

Refer to ProSpec Technical Data Sheet for product installation specifications.

Issue Date

09-10-09

Minimum Requirements:

Product	ANSI Spec	ISO
Adhesive	118.4	C2
Grout	118.3 - 118.6	RG - CG1

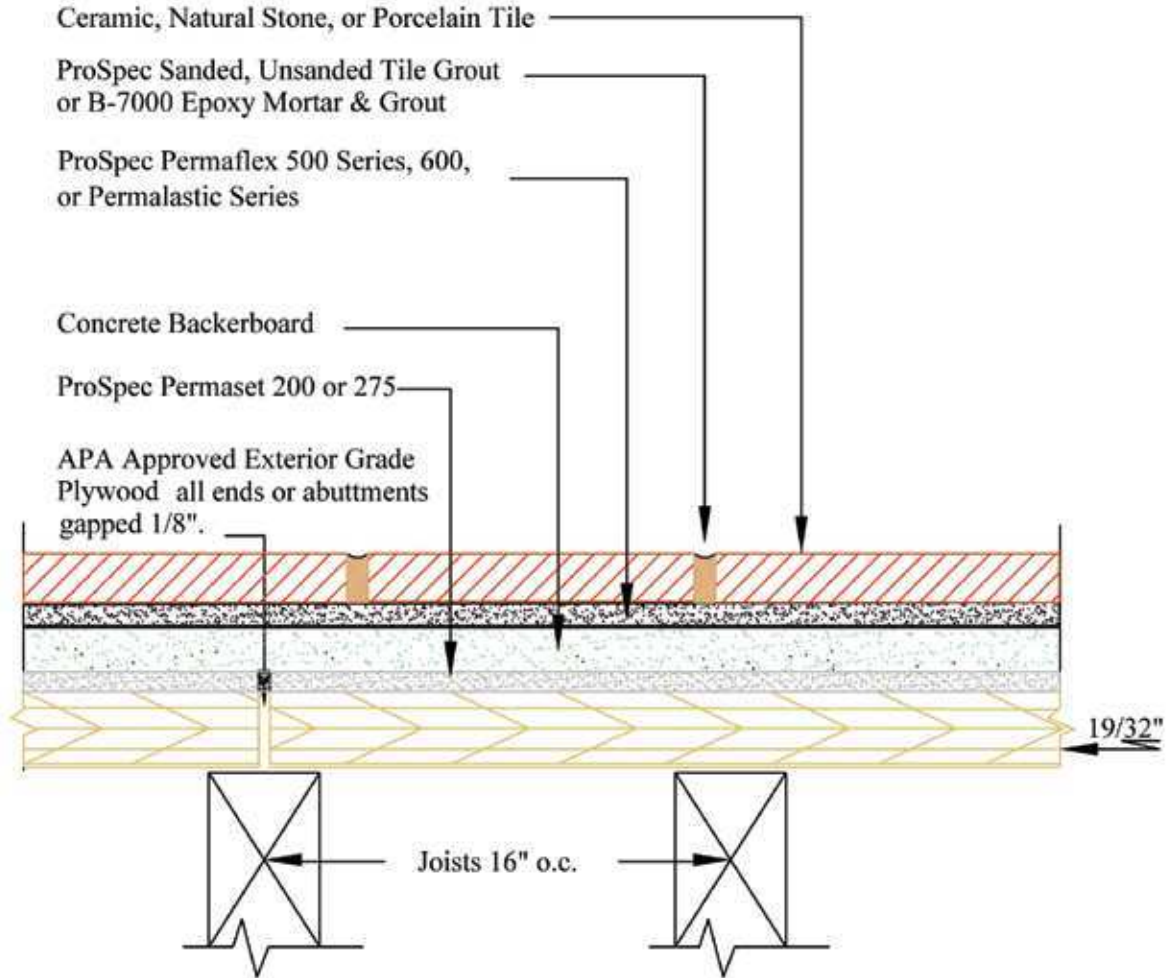
Drawing Number

F141

F144

Floors, Interior

Wood Subfloor: Cementitious Backer Unit / Fiber Cement Underlayment, Thin Set



NOTES:

Refer to ProSpec Technical Data Sheet for product installation specifications.

Issue Date

09-10-09

Minimum Requirements:

Product	ANSI Spec	ISO
Adhesive	118.4	C2
Grout	118.3 - 118.6	RG - CG1
Backer Board Setting bed	118.1	C1

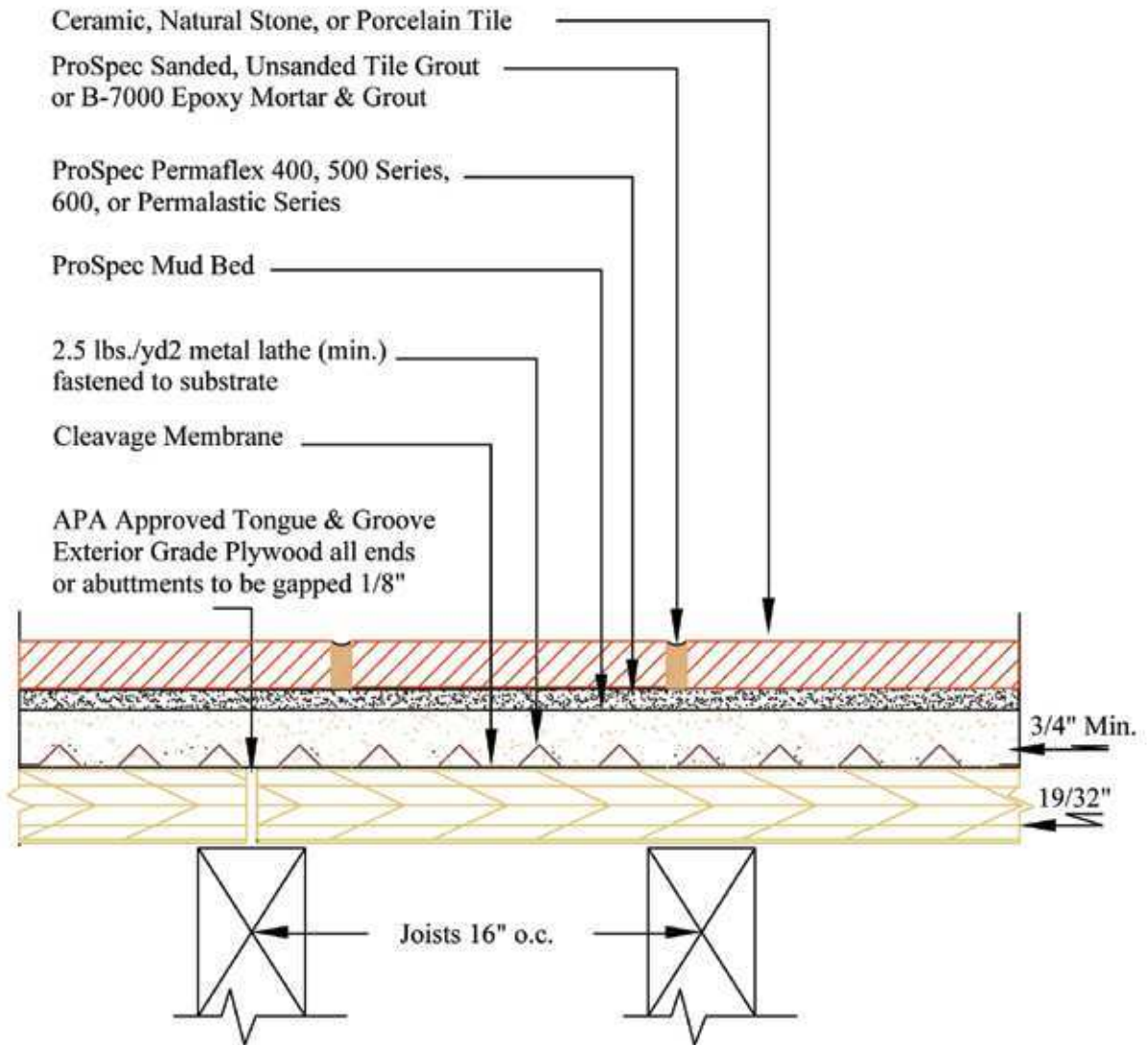
Drawing Number

F144

F145

Floors, Interior

Wood Subfloor – Cement Mortar, Metal Lath



NOTES:

Refer to ProSpec Technical Data Sheet for product installation specifications.

Issue Date
09-10-09

Product	Minimum Requirements:	
	ANSI Spec	ISO
Adhesive	118.4	C2
Grout	118.3 - 118.6	RG - CG1

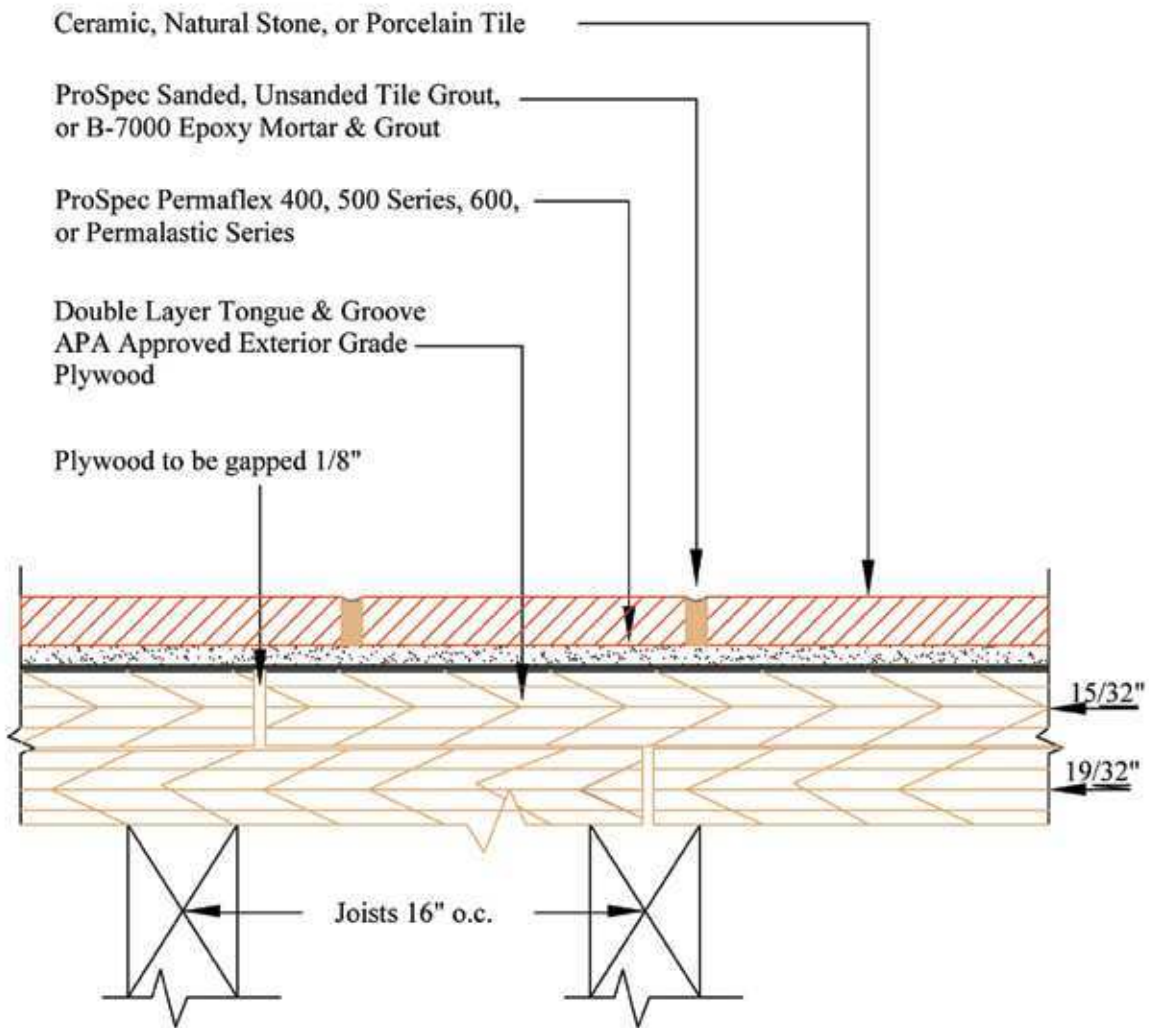
Drawing Number
F145

F150



Floors, Interior

Wood Subfloor: Plywood Underlayment EGP Latex-Portland Cement Mortar



NOTES:

Refer to ProSpec Technical Data Sheet for product installation specifications.

Issue Date

09-10-09

Minimum Requirements:

Product	ANSI Spec	ISO
Adhesive	118.4	C2-P1
Grout	118.3 - 118.6	RG - CG1

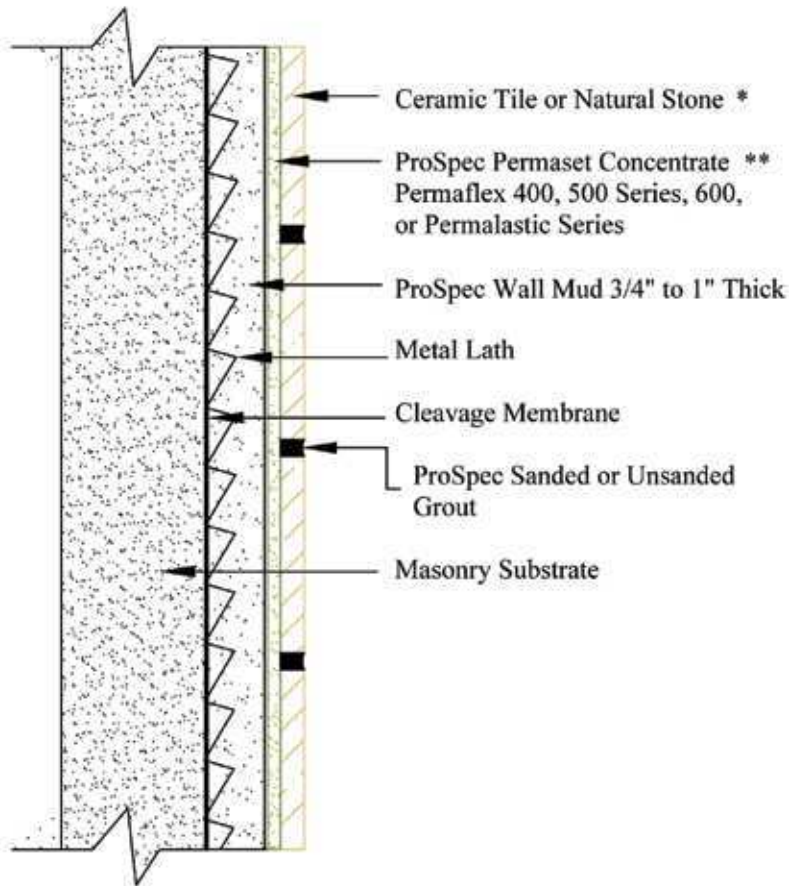
Drawing Number

F150

W201

Walls, Exterior & Interior

Masonry: Cement Mortar



NOTES:

Refer to ProSpec Technical Data Sheet for product installation specifications.

* Procelain tile requires thin set mortar meeting 118.4

** Wet set method for interior applications only - 118.1

Issue Date

09-22-09

Minimum Requirements:

Product	ANSI Spec	ISO
Adhesive	118.4	C2
Grout	118.6 - 118.7	CG1

Drawing Number

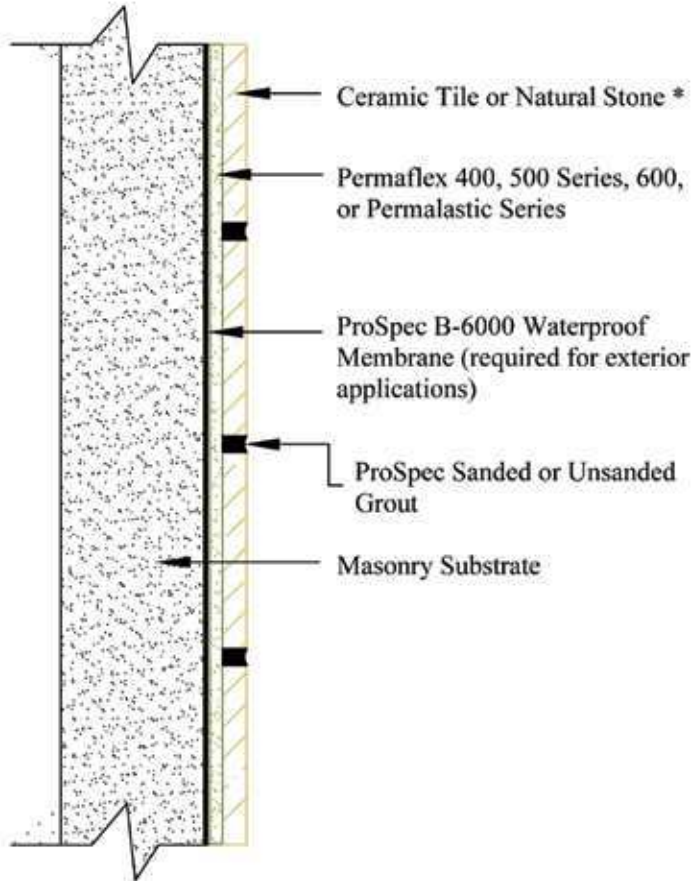
W201

W202



Walls, Exterior & Interior

Masonry: Dry Set Mortar or Latex Portland Cement Mortar



NOTES:

Refer to ProSpec Technical Data Sheet for product installation specifications.

* Porcelain tile requires thin set mortar meeting 118.4

Issue Date

09-22-09

Minimum Requirements:

Product	ANSI Spec	ISO
Adhesive	118.4	C2
Grout	118.3 - 118.6 - 118.7	RG - CG1
Waterproof Membrane	118.10 - IAPMO Approval	

Drawing Number

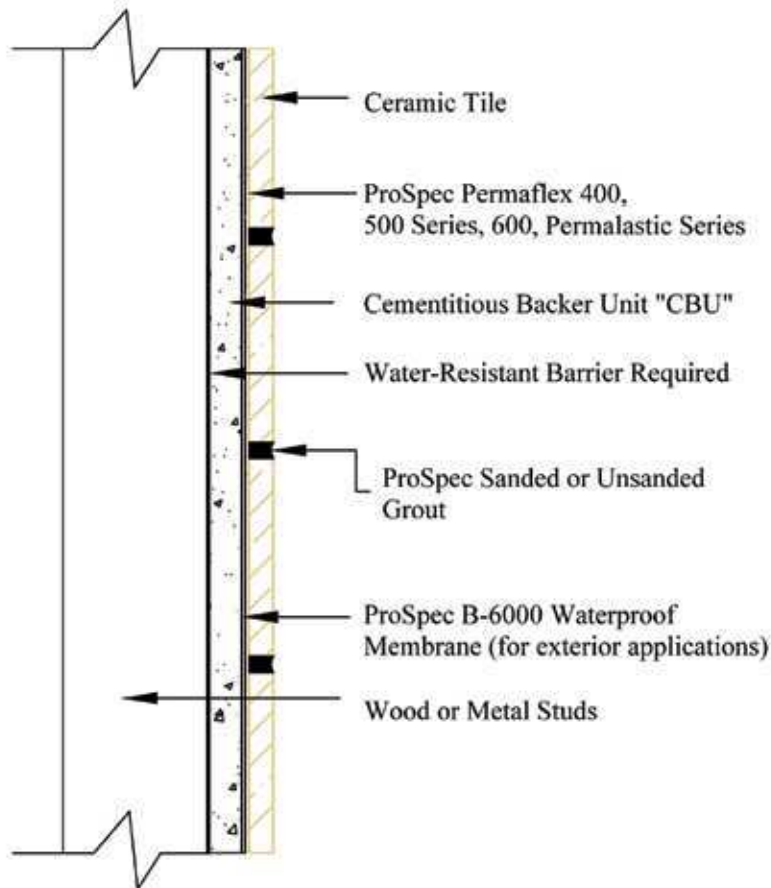
W202

W244E



Walls, Exterior & Interior

Wood or Metal Studs: Cementitious Backer Unit, Thin Set



NOTES:

Refer to ProSpec Technical Data Sheet for product installation specifications.

Issue Date
10-09-09

Product	Minimum Requirements:	
	ANSI Spec	ISO
Adhesive	118.4	C2
Grout	118.6 - 118.7	CG1

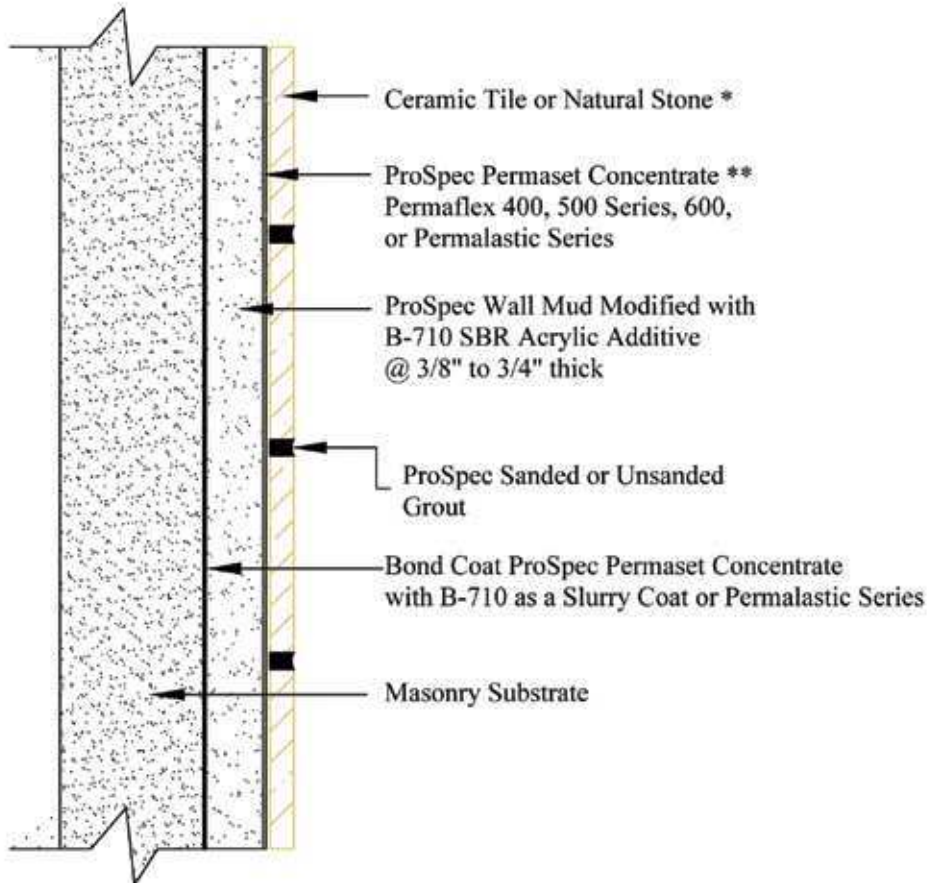
Drawing Number
W244E

W211



Walls, Interior

Masonry or Concrete: Cement Mortar, Bonded



NOTES:

Refer to ProSpec Technical Data Sheet for product installation specifications.

* Procelain tile requires thin set mortar meeting 118.4

** Wet set method

Issue Date

09-24-09

Minimum Requirements:

Product	Minimum Requirements:	
	ANSI Spec	ISO
Adhesive	118.4	C2
Grout	118.6 - 118.7	CG1

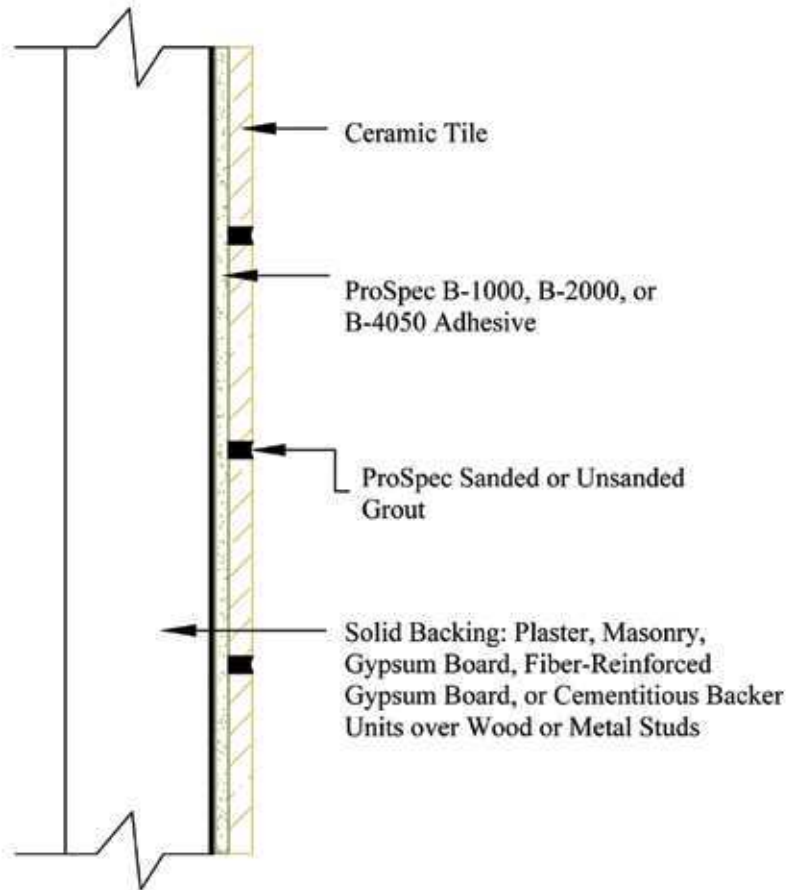
Drawing Number

W211

W223

Walls, Interior

Solid Backing: Organic Adhesive



NOTES:

Refer to ProSpec Technical Data Sheet for product installation specifications.

Issue Date

09-29-09

Minimum Requirements:

Product	ANSI Spec	ISO
Adhesive	A136.1	D1
Grout	118.6 - 118.7	CG1

Drawing Number

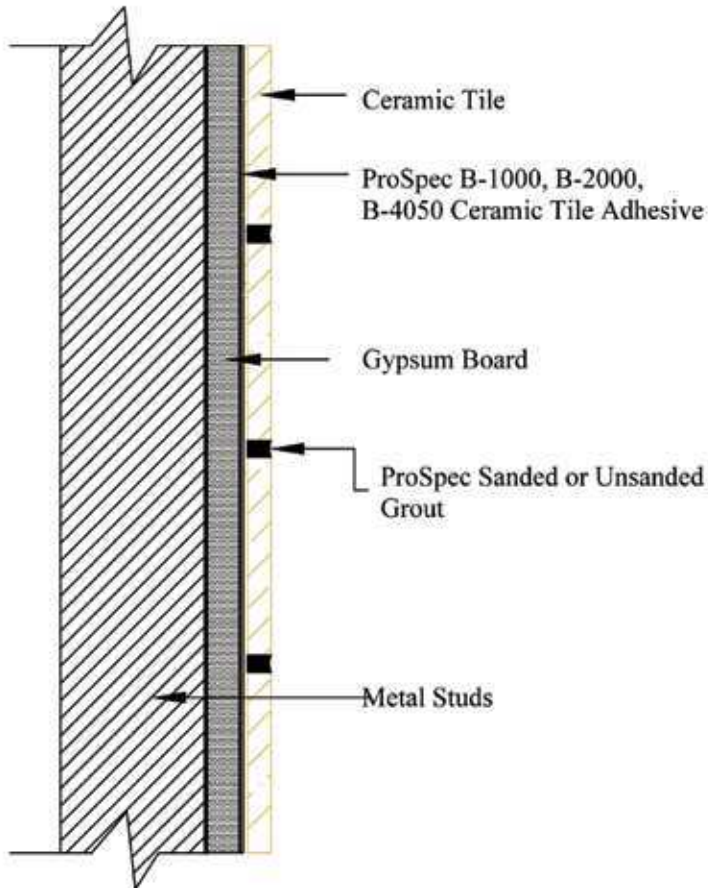
W223

W242



Walls, Interior

Metal Studs: Gypsum Board, Organic Adhesive



NOTES:

Refer to ProSpec Technical Data Sheet for product installation specifications.

* For dry areas only

Issue Date

10-07-09

Minimum Requirements:

Product	ANSI Spec	ISO
Adhesive	A136.1	D1
Grout	118.6 - 118.7	CG1

Drawing Number

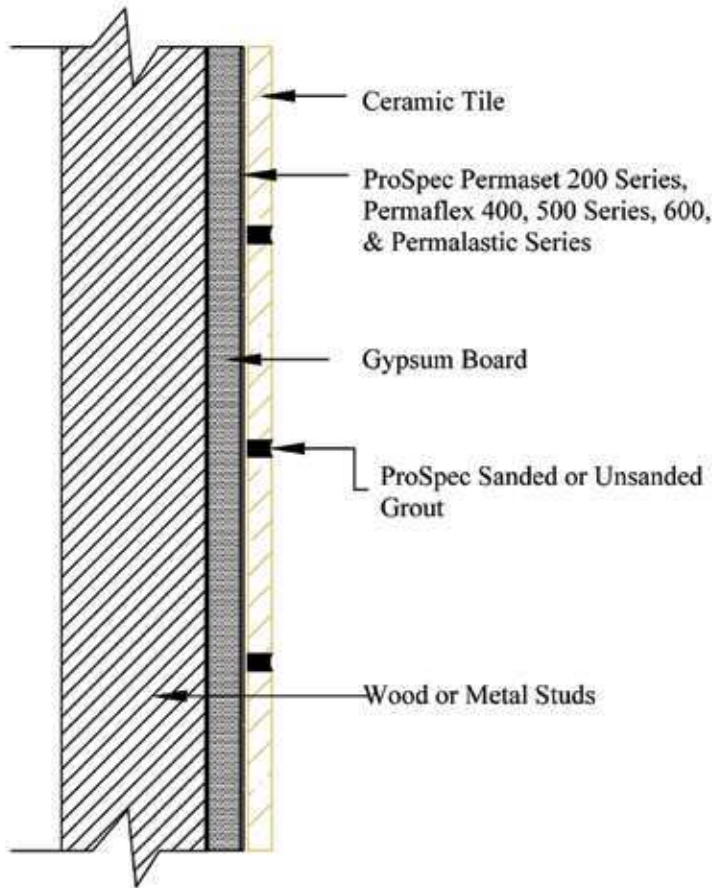
W242

W243



Walls, Interior

Wood or Metal Studs: Gypsum Board, Dry Set or Latex Portland Cement Mortar



NOTES:

Refer to ProSpec Technical Data Sheet for product installation specifications.

* For dry areas only

* Procelain tile requires thin set mortar meeting 118.4

Issue Date
10-01-09

<u>Minimum Requirements:</u>		
<u>Product</u>	<u>ANSI Spec</u>	<u>ISO</u>
Adhesive	118.1	C1
Grout	118.6 - 118.7	CG1

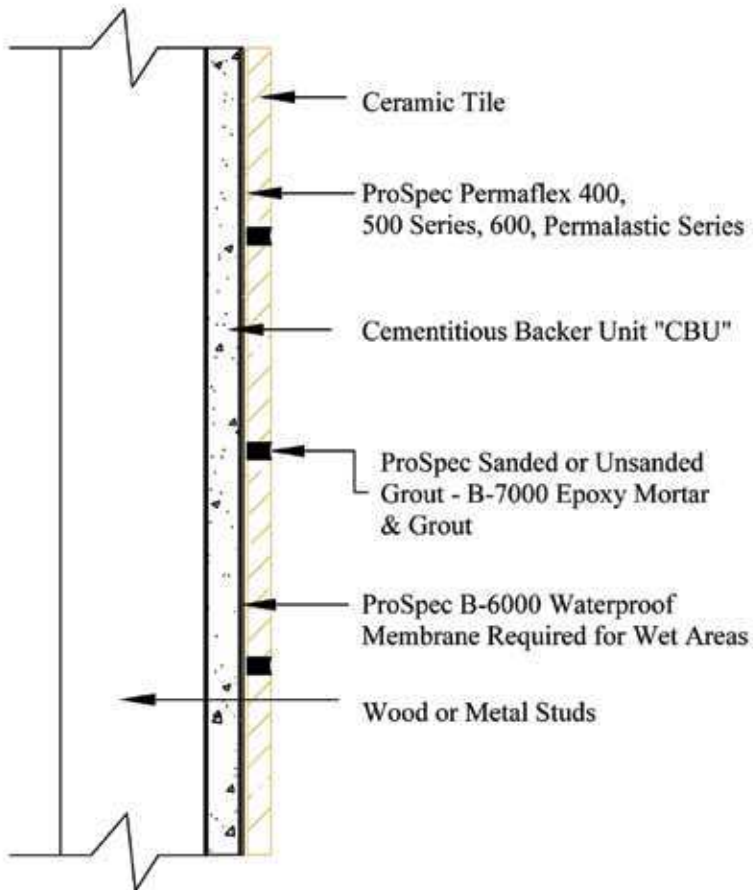
Drawing Number
W243

W244C



Walls, Interior

Wood or Metal Studs: Cementitious Backer Unit



NOTES:

Refer to ProSpec Technical Data Sheet for product installation specifications.

Issue Date

10-09-09

Minimum Requirements:

Product	ANSI Spec	ISO
Adhesive	118.4	C2
Grout	118.3-118.6-118.7	RG-CG1

Drawing Number

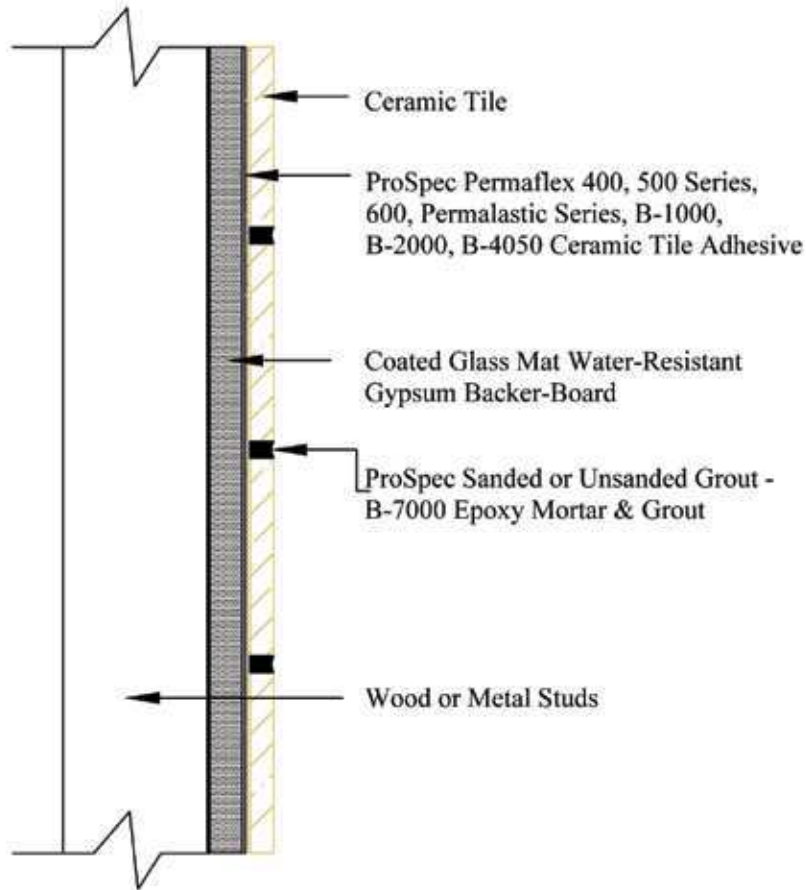
W244C

W245



Walls, Interior

Wood or Metal Studs: Coated Glass Mat, Water-Resistant Gypsum Backerboard



NOTES:

Refer to ProSpec Technical Data Sheet for product installation specifications.

Issue Date

10-07-09

Minimum Requirements:

Product	ANSI Spec	ISO
Adhesive	118.4 - A136.1	C2-D1
Grout	118.3 - 118.6 - 118.7	RG-CG1

Drawing Number

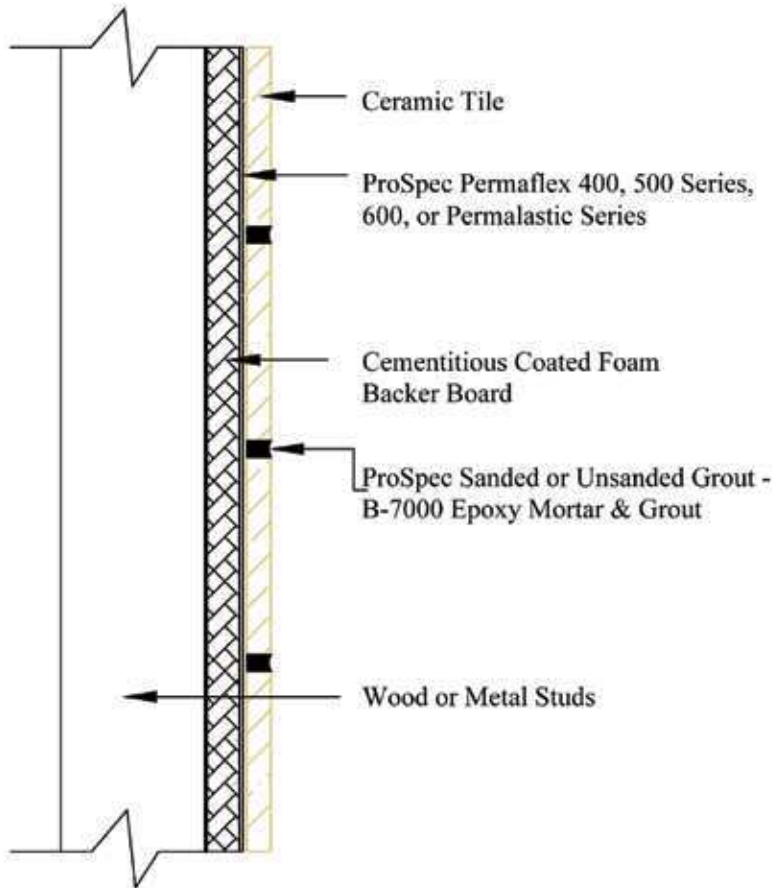
W245

W246



Walls, Interior

Wood or Metal Studs: Cementitious Coated Foam Backer Board



NOTES:

Refer to ProSpec Technical Data Sheet for product installation specifications.

Issue Date

10-12-09

Minimum Requirements:

Product	ANSI Spec	ISO
Adhesive	118.4	C2
Grout	118.3 - 118.6 - 118.7	RG-CG1

Drawing Number

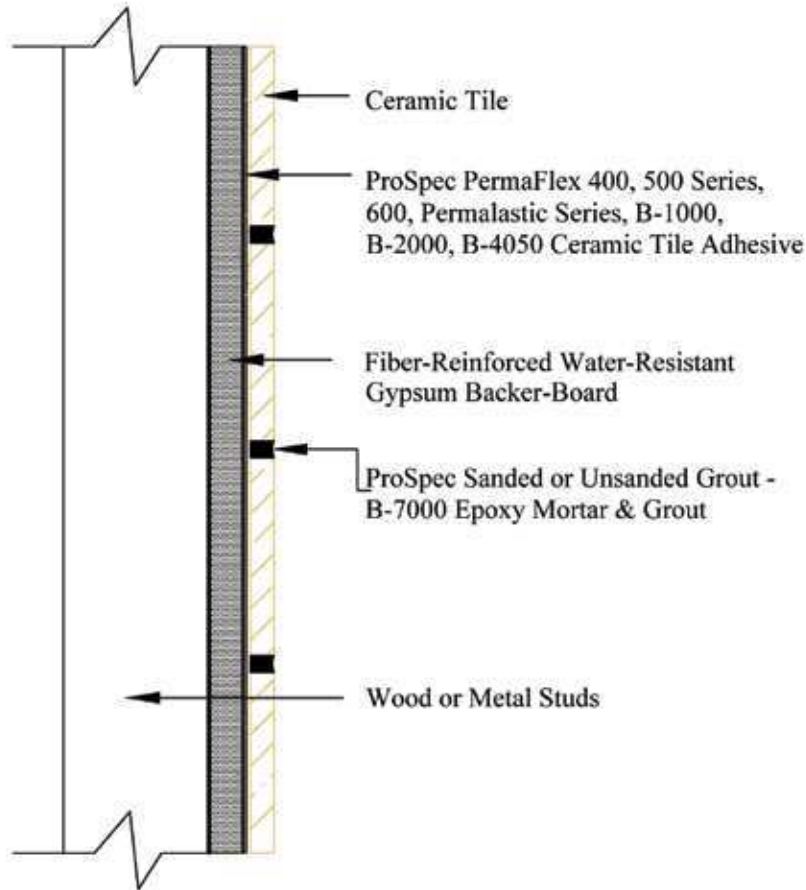
W246

W247



Walls, Interior

Wood or Metal Studs: Fiber-Reinforced Water-Resistant Gypsum Backerboard



NOTES:

Refer to ProSpec Technical Data Sheet for product installation specifications.

Issue Date
10-12-09

Product	Minimum Requirements:	
	ANSI Spec	ISO
Adhesive	118.4 - A136.1	C2-D1
Grout	118.3 - 118.6 - 118.7	RG-CG1

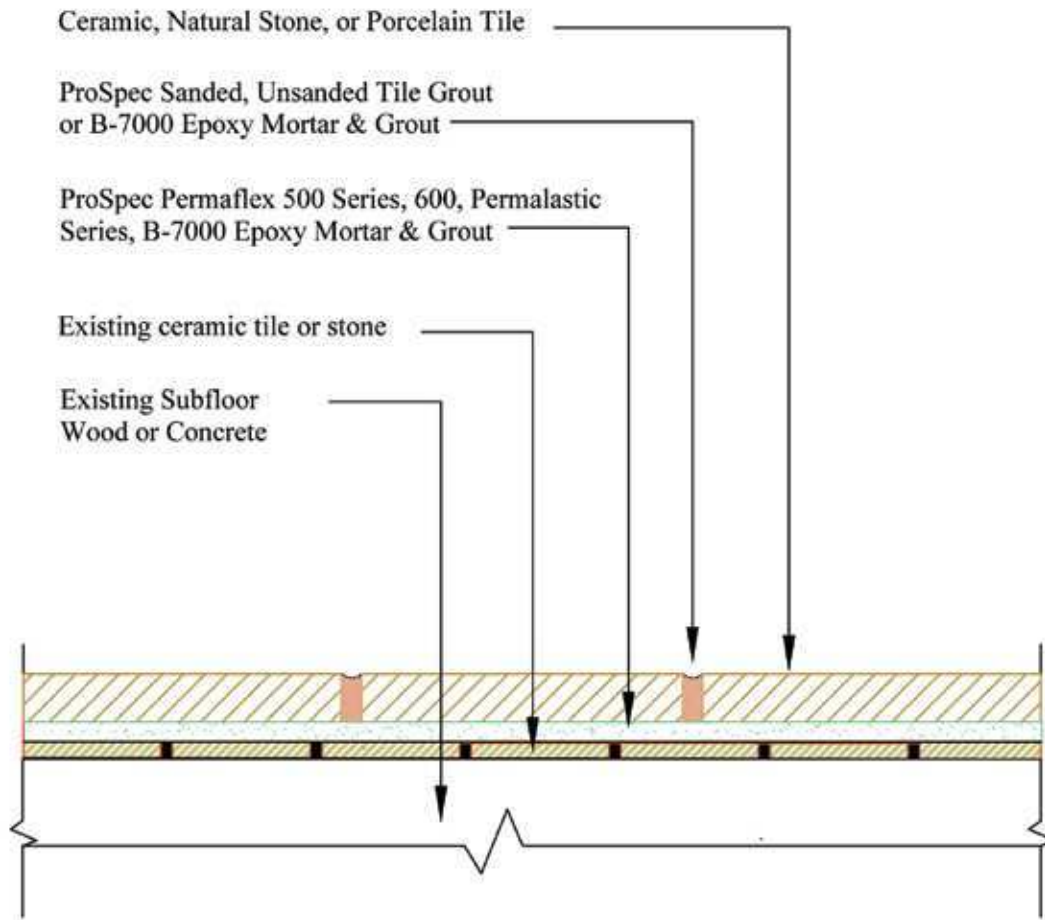
Drawing Number
W247

TR712



Floors, Interior

Renovation: Tile over tile on existing floor



NOTES:

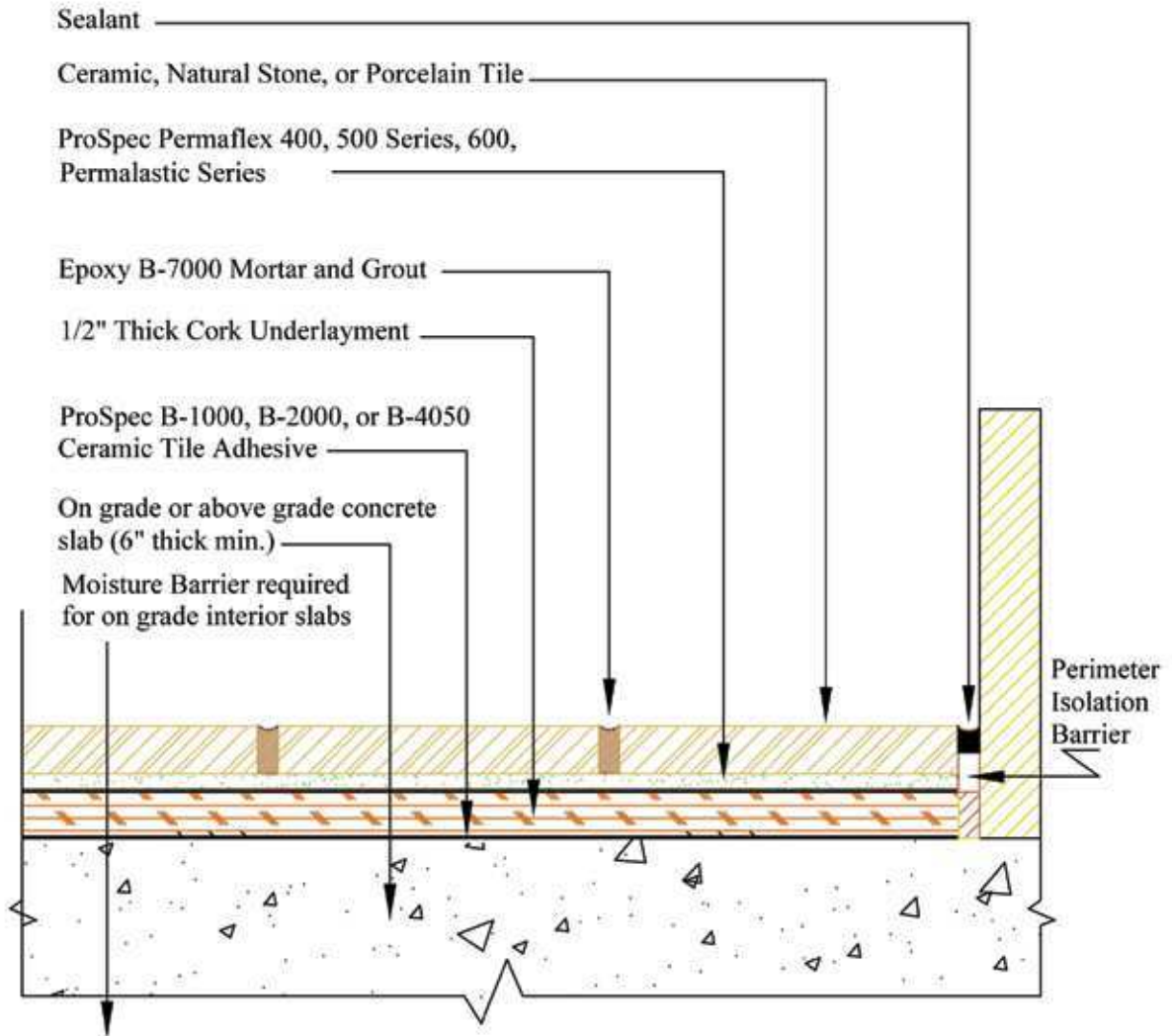
Refer to ProSpec Technical data sheet for product installation specifications.

Issue Date 09-08-09	<u>Minimum Requirements</u>		Drawing Number TR712
	Product	ANSI Spec ISO	
	Adhesive	118.3 - 118.4 C2 - S1	
Grout	118.3 - 118.6 RG - CG1		

F135

Floors, Interior

Cork Underlayment on Concrete: Latex Portland Cement Mortar Epoxy Grout



NOTES:

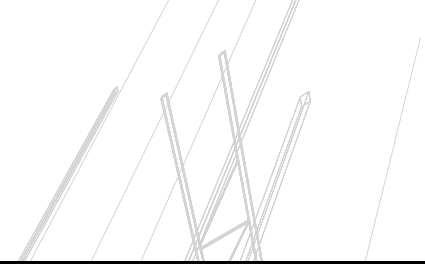
Refer to ProSpec Technical Data Sheet for product installation specifications.

Issue Date
09-08-09

Product	Minimum Requirements:	
	ANSI Spec	ISO
Adhesive	118.4	C2
Grout	118.3	RG

Drawing Number
F135

PRO SPEC[®]



8201 Arrowridge Boulevard
Charlotte, NC 28273
1.800.738.1621

REV 11/09