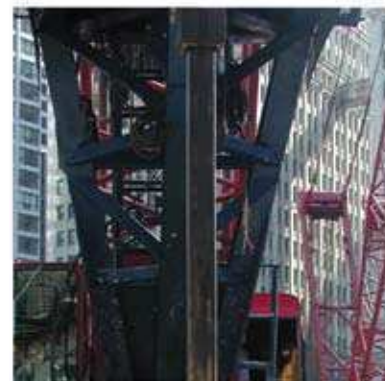


DIVERSIFIED ENVIRONMENTAL AND CONSTRUCTION TECHNOLOGIES





ENVIRONMENTAL LINERS AND CAPS

WATERPROOFING MEMBRANES

WATER CONTAINMENT LINERS AND COATINGS

GEOTEXTILES AND GEOCOMPOSITES

SPECIALTY CONTRACTING SERVICES

FOUNDATION DRILLING PRODUCTS

CETCO'S EXPERT STAFF, INNOVATIVE PRODUCT PORTFOLIO AND COMMITMENT TO RESEARCH AND DEVELOPMENT CONTINUE TO PROVIDE OUR CUSTOMERS WITH THE **BEST SOLUTION** FOR ENVIRONMENTAL OR CONSTRUCTION PROJECTS.

SITE REMEDIATION TECHNOLOGIES

DRILLING FLUIDS AND GROUTS

BOREHOLE SEALANTS

WELL REHABILITATION CHEMICALS

GREEN ROOF SYSTEMS

GAS AND VAPOR BARRIERS



QUALITY PRODUCTS AND SERVICES

CETCO provides products and services worldwide, serving customers in a diverse range of industries including site remediation, concrete waterproofing for underground structures, environmental containment on projects ranging from landfills to flood control, and drilling applications including foundation, water well, and horizontal drilling. Backed by more than 80 years of bentonite mining and manufacturing experience, CETCO continues to be a technological leader in environmental construction.

EXPERT TECHNICAL SUPPORT

Our corporate technical center provides the setting for comprehensive research and development as well as technical support necessary to provide the best products and services available.

Responsive, personal attention is what you get from CETCO. We work together with you to offer the best technical support to ensure your projects are successful.





GLOBAL MANUFACTURING FACILITIES

CETCO manufacturing facilities located in North America, Europe, and Asia are supported by an extensive global sales and distribution network. So wherever you are located, you will find a CETCO office or distributor nearby.



CONTRACTING SERVICES

Philadelphia, PA
 Birkenhead, England
 Madrid, Spain
 Gyeonggi-do, South Korea
 Szczytno, Poland
 Suzhou, China



MANUFACTURING

Lovell, WY
 Santa Ana, CA
 Cartersville, GA
 Birkenhead, England
 Segovia, Spain
 Bhuj, India
 Gyeonggi-do, South Korea
 Szczytno, Poland
 Suzhou, China



TECHNOLOGY

Hoffman Estates, IL
 Lafayette, LA
 Cartersville, GA
 Whitsford, England
 Birkenhead, England
 Aberdeen, Scotland
 Szczytno, Poland
 Suzhou, China



OFFICES

Hoffman Estates, IL
 Santa Ana, CA
 Birkenhead, England
 Copenhagen, Denmark
 Segovia, Spain
 Gyeonggi-do, South Korea
 Santiago, Chile
 Singapore
 Collegien, France
 Szczytno, Poland
 Geelong, Australia
 Shanghai, China

CONTACT NUMBERS or visit our website cetco.com

Hoffman Estates	1.847.851.1800	Segovia	34.902.820.200	Collegien	33.1.60.33.00.10
Santa Ana	1.714.384.0111	Korea	82.31.653.8646	Poland	48.89.624.9279
Birkenhead	44.151.606.5900	Santiago	562.208.3299	Geelong North	61.5272.2090
Copenhagen	45.36.30.10.50	Singapore	65.886.11488	Suzhou	86.512.6283.3306



CETCO[®]

© 2008 CETCO (Colloid Environmental Technologies Company)

An **AMCOL** Company

Printed on Recycled Paper