

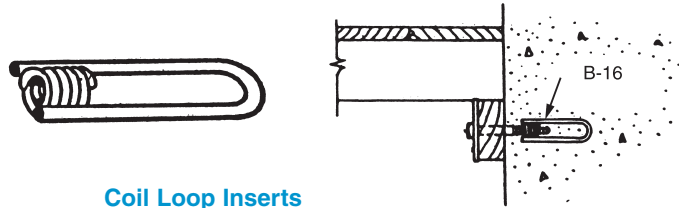
Formliners

Easy to install and easy to strip, Dayton Superior Formliners are available in Single Use, Medium Reuse and Heavy Reuse. Repeat patterns eliminate seam lines.

For complete details, request our full color handbook describing new Formliner products from Dayton Superior, with photos, drawings and architectural specifications. Dayton Superior's Formliners are offered in more than 500 contemporary designs and three weights.

B-16, B-17, B-18, B-33 Coil Loop Inserts

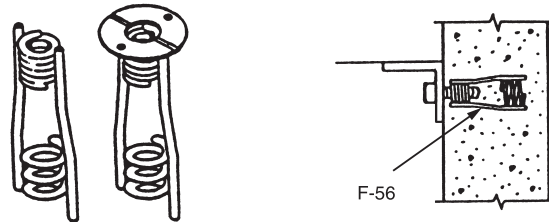
Dayton Superior Coil Loop Inserts are made of a single looped wire welded to a helix coil. They are available in 1/2" to 1" diameters suitable for many concreting applications.



Coil Loop Inserts

F-56, F-57, F-58, F-59, F-60, F-61 Expanded Coil Inserts

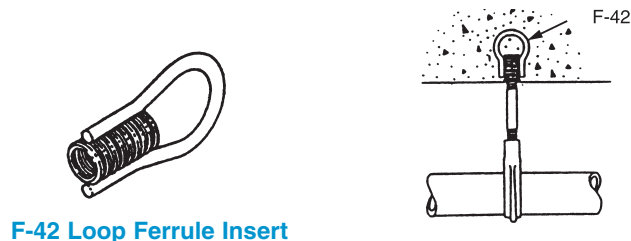
Dayton Superior Expanded Coil Inserts are coil or closed ferrule structural connection inserts available in two, four or six strut versions, in 1/2" through 1-1/2" diameters, with or without nailing washer.



Expanded Coil Inserts

F-42 Loop Ferrule Insert

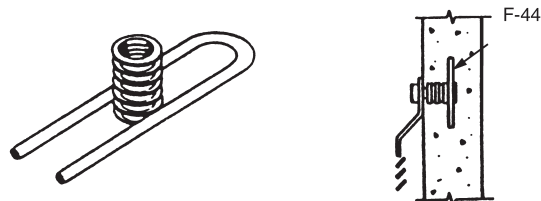
Dayton Superior F-42 Loop Ferrule Insert is a versatile insert suited for structural connections and suspension of equipment, ceilings, piping, etc. Available in 1/4" to 1" diameter closed ferrules in 1/8" increments.



F-42 Loop Ferrule Insert

F-44 Thin Slab Ferrule Insert

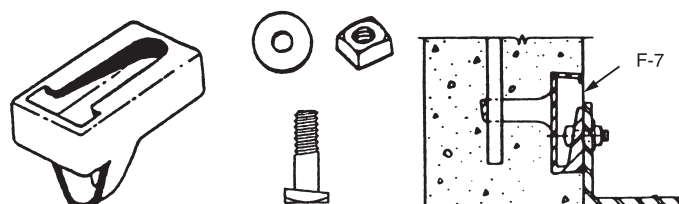
Dayton Superior F-44 Thin Slab Ferrule Insert is used where the depth of embedment is limited. The F-44 is specially designed to develop good working loads in very thin concrete slabs. Available in 1/4" through 1" diameter, in 1/8" increments, closed ferrules.



F-44 Thin Slab Ferrule Insert

F-7, F-7-L, F-8 Shelf Angle Insert

Dayton Superior Shelf Angle Insert is a malleable iron casting with a wedge shaped holding face that works in conjunction with a special Askew Head bolt. Available in standard and long configurations.



Shelf Angle Insert