



**MAKE YOUR MARK.
MAKE A DIFFERENCE.**



DESIGNED TO PERFORM

Years ago, a building simply had to be structurally sound, cost-effective and serve the needs of the business and occupants inside. Today, architects, builders and building owners must consider so much more, such as:

- Energy efficiency
- Moisture management
- Rising energy costs
- Environmental responsibility
- Regulations and mandates for energy efficiency

Since the invention of STYROFOAM™ Brand Extruded Polystyrene (XPS) Insulation more than 60 years ago, Dow Building Solutions has helped address all of these issues by employing a design philosophy focused on products that offer:

Durability – High-performance building products from Dow are not only designed to perform a specific function, they are designed to last. This is key to sustainability.

Quality – Dow products have been proven to perform, over and over, in real buildings under real-world conditions.

Innovation – Products and integrated systems from Dow answer the changing needs of the construction industry.

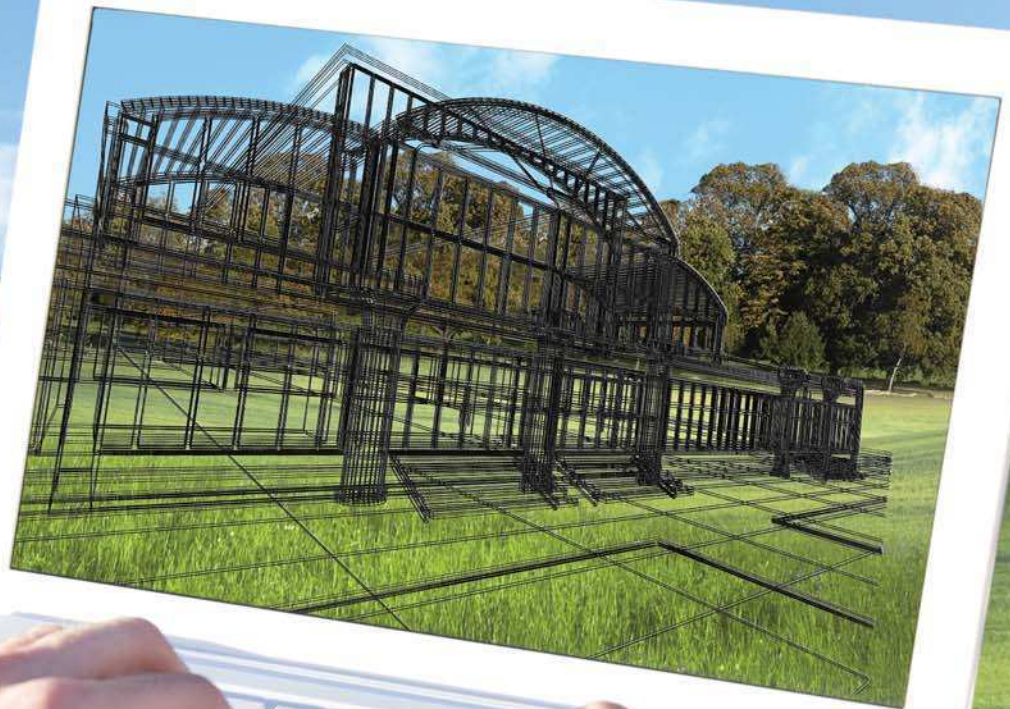
Comfort – Insulation and sealant products from Dow manage air infiltration and moisture to reduce condensation and minimize mold and mildew formation.

Energy Efficiency – Dow insulation, sealant and complementary products enhance the building envelope, reducing fuel consumption.

Sustainability – Dow insulation products provide long-lasting thermal performance, thereby lowering greenhouse gas (GHG) emissions for the life of a building.

Finally, Dow has not lost sight of a constant concern – cost. Its products continue to be a smart investment.

Installed in over 20 million buildings worldwide, STYROFOAM™ Brand XPS Insulation insulates over 20 billion ft², saving over US \$10 billion in energy costs annually.



DESIGN FOR THE FUTURE.

INSULATE TO MAKE A CHANGE FOR THE BETTER

Insulating a building envelope not only enhances the building's energy efficiency, it's a cost-effective way to reduce GHG emissions.

According to this graph, an investment in insulation has the most potential for generating positive economic returns over a building's life cycle, while helping reduce GHG emissions. Starting first with the lowest marginal cost GHG abatement options – insulation improvements – can have an immediate positive impact on the environment, on the sustainability of buildings around the world and on the bottom line for businesses globally.

Research results are consistent with what Dow and the building industry have known for many years: **Building insulation is one of the best ways to reduce GHG emissions, save money and boost economic growth.**

ENVISION THE BENEFITS

Green building practices are gaining popularity as more people learn that opting for energy efficiency no longer always means paying a premium price.

- Rebates and tax credits are on the rise for builders who construct green buildings
- Products that contribute to sustainability are more widely available and cost-competitive
- Green buildings are in demand by building owners who want to lower operating costs and maintain higher resale value

From the architect's plan to the builder's energy-efficiency mindset, Dow is ready to help turn the entire vision into a highly functional building with the owner's bottom line and the global environment as top priorities.

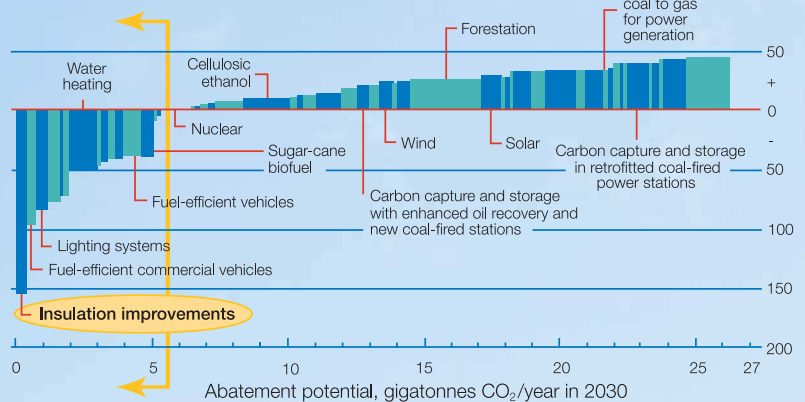
MEET LEED AND BEYOND

The Canada Green Building Council has developed a Leadership in Energy and Environmental Design (LEED) rating system modeled after the U.S. Green Building Council LEED program and adapted for Canadian climates. Through this system, design professionals accumulate credits based on meeting criteria for the use of environmentally friendly, sustainable and energy-efficient products and systems.

BUILDING INSULATION COST-EFFECTIVELY REDUCES GREENHOUSE GAS EMISSIONS GLOBALLY

The cost of cutting GHG emissions in different ways

Marginal cost of abatement, examples €/t CO₂



Source: Study conducted by McKinsey & Company, and Vattenfall

McKinsey & Company studied the costs of implementing various GHG abatement options. "Insulation improvements" is among the more economical measures at the left of the arrows that provide the fastest payback and should be implemented before doing any of the other measures. And as the graph shows, "insulation improvements" is by far the best measure in terms of a negative marginal cost. This graph represents only a few of the abatement options researched. For the graph in its entirety, visit www.mckinseyquarterly.com/A_cost_curve_for_greenhouse_gas_reduction_1911.

THE ARCHITECTURE 2030 ORGANIZATION HAS ISSUED A CHALLENGE: REDUCE FOSSIL-FUEL CONSUMPTION BY 50 PERCENT IN ALL NEW BUILDINGS AND MAJOR RENOVATIONS BY 2010, INCREASING THE REDUCTION UNTIL NEW BUILDINGS ARE CARBON NEUTRAL BY 2030.

– WWW.ARCHITECTURE2030.ORG

Leading Products

Energy-efficient Dow products may contribute to significant LEED credits in a wide variety of commercial foundation, roof and wall applications. Our brand-leading offering includes:

- STYROFOAM™ Brand Extruded Polystyrene Insulation
- FROTH-PAK™ Foam Sealant
- GREAT STUFF PRO™ Insulating Foam Sealants
- WEATHERMATE™ Straight Flashing
- INSTA STIK™ Quik Set Commercial Roofing Adhesive
- TILE BOND™ Roof Tile Adhesive

©™ Trademark of The Dow Chemical Company ("Dow") or an affiliated company of Dow

FOUNDATIONS

INTERIOR OR EXTERIOR APPLICATIONS

STYROFOAM™ Brand Extruded Polystyrene Insulation stands up to the demands of foundation wall and drainage applications:

- Excellent water resistance
- Long-term thermal performance
- High compressive strength resists crushing by backfill

INSULATION/DRAINAGE

PRODUCTS:

- STYROFOAM™ Brand PERIMATE™ Insulation
- STYROFOAM™ Brand SM Insulation

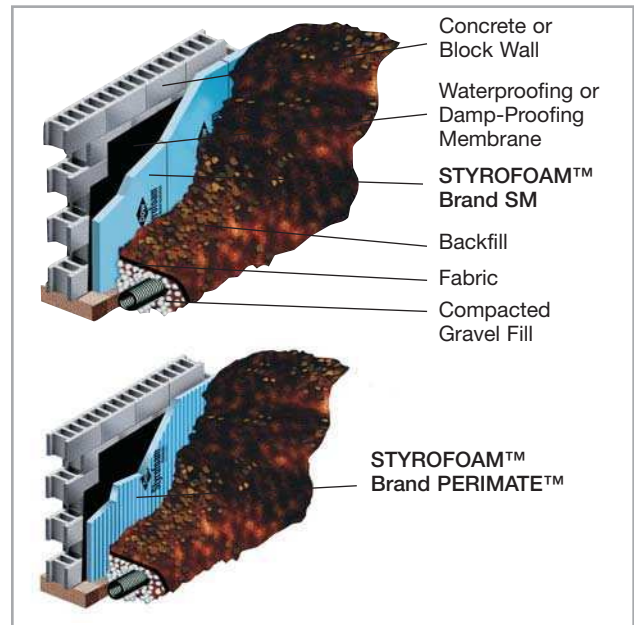
APPLICATION:

Install STYROFOAM™ Brand SM Extruded Polystyrene Insulation against the exterior foundation wall to help provide long-term thermal performance.

Meets CAN/ULC S701 Type 4

STYROFOAM™ Brand PERIMATE™ Extruded Polystyrene Insulation provides waterproofing, thermal insulation and drainage of the subsurface soil moisture in a single step. It is suitable for use in pervious, semi-pervious and practically impervious soils.

Meets CAN/ULC S701 Type 4 and CCMC Class A Type 2 drainage requirements



GEOTECHNICAL

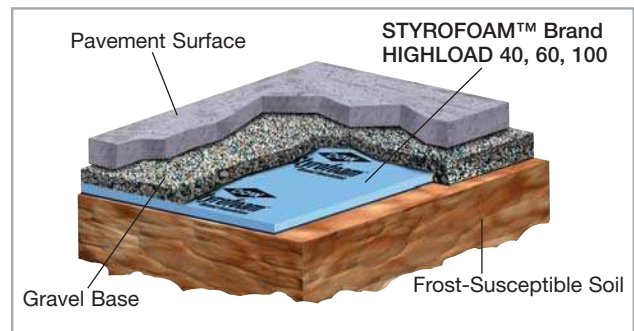
PRODUCTS:

- STYROFOAM™ Brand HIGHLOAD 40, 60 or 100 Insulation

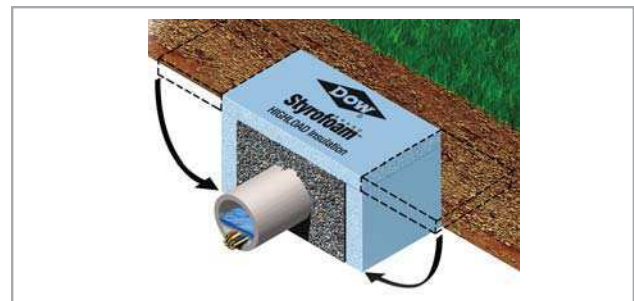
APPLICATION:

Use wherever excellent load-bearing and insulating capabilities are needed, including under building floor slabs; highways; airport runways, taxiways and aprons; railroads; culverts; retaining walls; storage tank slabs; and swimming pools.

Lay STYROFOAM™ Brand Extruded Polystyrene Insulation on top of leveled soil. Top with a gravel base and pavement or other surface. For low-temperature floors such as ice rinks, position insulation under the wearing slab.



STYROFOAM™ Brand HIGHLOAD Insulation has been developed specifically for in-ground applications.



Insulating an in-ground utility line with STYROFOAM™ Brand HIGHLOAD Insulation allows installation above the frost depth.

For more detailed installation information, contact your Dow representative or refer to the product literature.

®™Trademark of The Dow Chemical Company ("Dow") or an affiliated company of Dow

[ROOFS]

PROTECTED MEMBRANE ROOFING (PMR)

STYROFOAM™ Brand Extruded Polystyrene Insulation offers exceptional performance in roofing and plaza applications:

- Excellent moisture resistance and stable long-term R-value (or RSI)*
- Excellent physical properties
- Extends life of plaza or roof; for use with waterproofing roof terraces, promenades and similar applications
- Protects membrane against weathering, physical abuse and damage

- Maintains membrane at a relatively constant temperature, minimizing effects of freeze-thaw cycling and temperature extremes
- Reduces repair expenditures
- Easy removal and re-installation of ballast and insulation
- Excellent moisture control – membrane serves as the vapour retarder

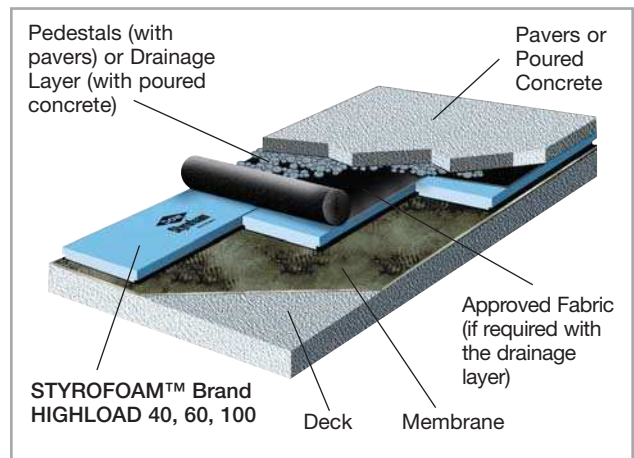
PLAZA CONSTRUCTION

PRODUCTS:

- STYROFOAM™ Brand HIGHLOAD 40, 60 or 100 Insulation

APPLICATION:

Install directly on top of the waterproofing membrane. Follow with a layer of fabric and gravel or pedestals for leveling and drainage. Top with pavers, poured concrete or green roof finishes. Use when pedestrian or vehicular traffic is anticipated.



BALLASTED ROOF CONSTRUCTION

PRODUCT:

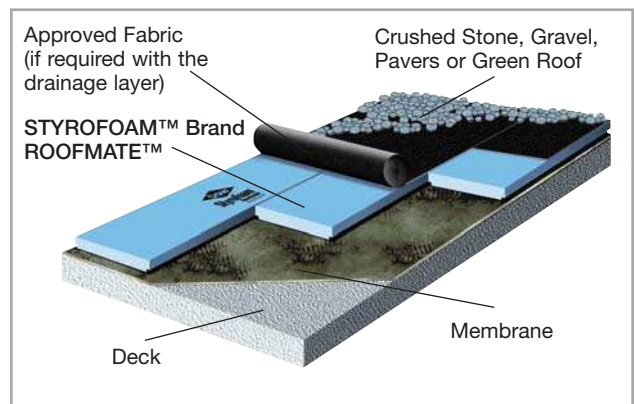
- STYROFOAM™ Brand ROOFMATE™ Insulation

APPLICATION:

Install on top of the membrane. Follow with approved fabric and a layer of crushed stone, gravel, pavers or green roof.

- Year-round construction – roof is waterproofed first, then insulated
- Forty years' proven performance
- Full system warranties may be available from membrane manufacturers

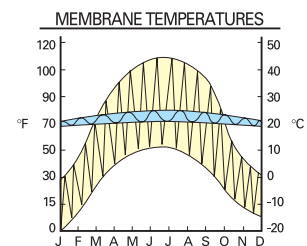
Meets CAN/ULC S701 Type 4



MEMBRANE FIELD TEMPERATURE TEST

Membrane protection (PMR vs. conventional): Field studies have shown that a constant temperature can extend the life of the membrane. STYROFOAM™ Brand ROOFMATE™ Extruded Polystyrene Insulation offers excellent temperature control.

- PMR assembly (blue line) – the membrane temperature remains relatively constant
- Conventional roof (yellow line) – membrane temperature fluctuates widely



*R means resistance to heat flow. The higher the R-value or RSI (R-Value Système Internationale), the greater the insulating power.

For more detailed installation information, contact your Dow representative or refer to the product literature.

CONVENTIONALLY INSULATED ROOF CONSTRUCTION – MECHANICALLY ATTACHED, BALLASTED AND FULLY ADHERED

In conventional roofing applications, STYROFOAM™ Brand Extruded Polystyrene Insulation offers:

- High moisture resistance and long-term R-value (or RSI)
- Ease of use – simple to cut, install and store
- High compressive strength for excellent durability and resistance to damage

- Reusability when membrane must be replaced
- Planed surface for excellent bonding of adhesives (STYROFOAM™ Brand DECKMATE™ Plus FA Insulation)

Check with your local Dow sales representative for local code requirements.

LOOSE-LAID BALLASTED SYSTEM

PRODUCTS:

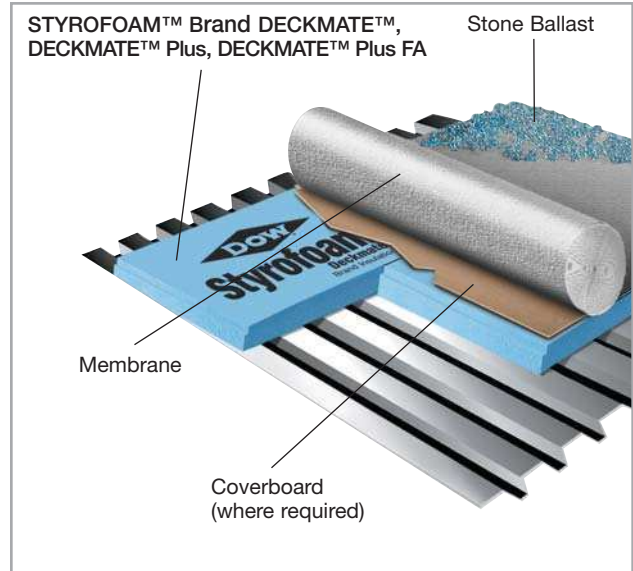
- STYROFOAM™ Brand DECKMATE™ Insulation
- STYROFOAM™ Brand DECKMATE™ Plus Insulation
- STYROFOAM™ Brand DECKMATE™ Plus FA Insulation

APPLICATION:

Install insulation directly on structural deck, including metal decking. Any application-appropriate roofing membrane may be used with STYROFOAM™ Brand Extruded Polystyrene Insulation. However, in some cases a coverboard or slip sheet may be required between the insulation and the membrane for heat or chemical protection. Dark-coloured adhered or mechanically fastened membranes require a coverboard. Consult Dow and/or local building code for installation requirements.

STYROFOAM™ Brand DECKMATE™ Plus FA Insulation has a compressive strength of 20 psi for applications where greater membrane support is desired.

Meets CAN/ULC S701 Type 2 (STYROFOAM™ Brand DECKMATE™) and Type 3 (STYROFOAM™ Brand DECKMATE™ Plus)



TAPERED INSULATION SYSTEM

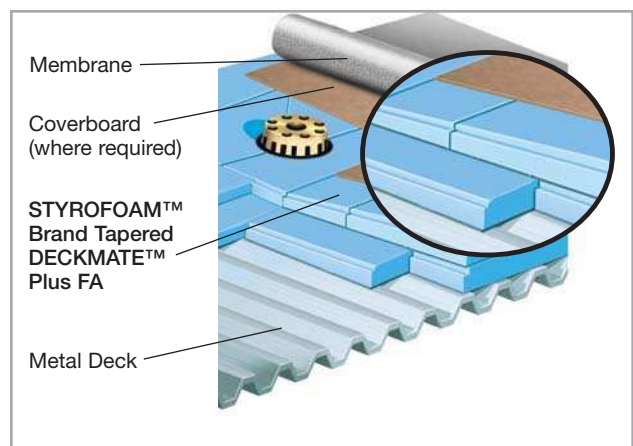
PRODUCT:

- STYROFOAM™ Tapered DECKMATE™ Plus FA Insulation

APPLICATION:

Install on flat roof decks to increase roof slope. Any roofing membrane may be used with STYROFOAM™ Brand Tapered DECKMATE™ Plus FA Insulation. However, in some cases a coverboard may be required between the insulation and the membrane for heat or chemical protection. Dark-coloured adhered or mechanically fastened membranes require a coverboard.

- Tapered design provides a positive slope to improve roof drainage
- Consult Dow and/or local building code for installation requirements



For more detailed installation information, contact your Dow representative or refer to the product literature.

®™Trademark of The Dow Chemical Company ("Dow") or an affiliated company of Dow

ROOF RE-COVER APPLICATIONS

A fanfolded STYROFOAM™ Brand Extruded Polystyrene Insulation product is designed specially for roof re-cover applications:

- Resistant to the effects of moisture

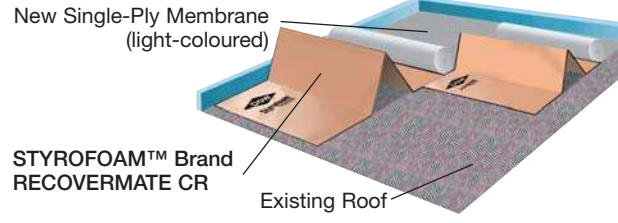
- Excellent compressive retention
- Lightweight: easy to cut, handle, install and store
- Withstands temperatures to 165°F (74°C)

PRODUCT:

- STYROFOAM™ Brand RECOVERMATE CR Insulation

APPLICATION:

Install STYROFOAM™ Brand RECOVERMATE CR Insulation over entire surface of old roof, on top of existing membrane. Top with ballasted or light-coloured mechanically attached sheet membrane.



ONE- AND TWO-COMPONENT POLYURETHANE FOAM PRODUCTS FOR ROOFS

Polyurethane foam sealant and adhesive products from Dow deliver the high quality and reliability professionals require in a wide range of commercial roofing applications, including:

- Flat and low slope roofs

- Steep slope roofs
- Barrel and dome roofs
- Roof re-cover projects
- New and re-roof projects

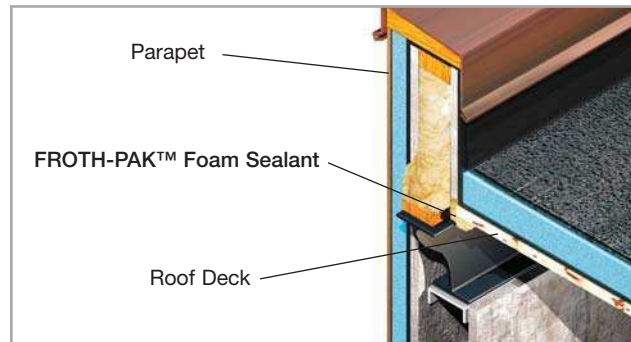
SEALANT

PRODUCT:

- FROTH-PAK™ Foam Sealant**

APPLICATION:

Use FROTH-PAK™ Foam Sealant to fill gaps or joints larger than 3" (75 mm). When properly applied, the spray forms an effective air sealant or insulation on most roofing materials. During construction, FROTH-PAK™ Foam Sealant is also useful in sealing the perimeter of the building between the roof deck and parapet.



ADHESIVES

PRODUCTS:

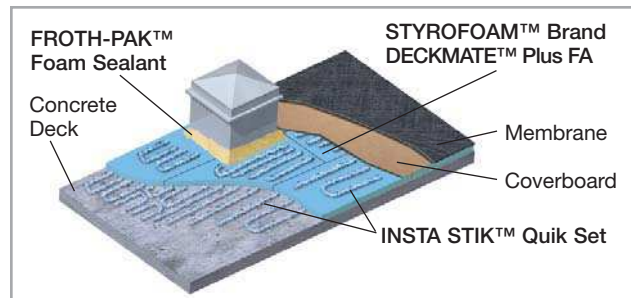
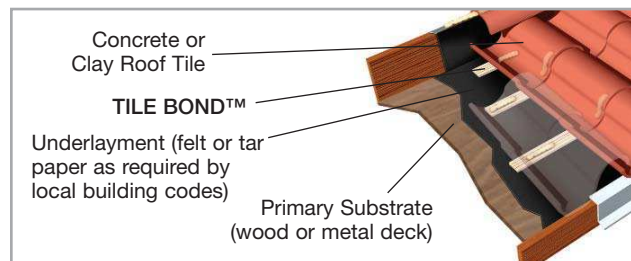
- INSTA STIK™ Quik Set Commercial Roofing Adhesive**
- TILE BOND™ Roof Tile Adhesive**

APPLICATION:

Polyurethane adhesive products from Dow provide a fast, efficient method for securing foam insulation boards or roof tiles to appropriate roof deck or substrate.

INSTA STIK™ Quik Set has a limited 10-year adhesion warranty when applied to compatible materials or substrates by an approved applicator. Limited 15- and 20-year adhesion warranties are available at additional cost. Certain conditions apply; see the appropriate warranty for details.

TILE BOND™ must be applied by an approved applicator to meet certain building code requirements. Consult local code authorities.



For more detailed installation information, contact your Dow representative or refer to the product literature.

©™Trademark of The Dow Chemical Company ("Dow") or an affiliated company of Dow
 **Consult the instructions and Material Safety Data Sheets carefully before use.

WALLS

INTERIOR APPLICATIONS

With STYROFOAM™ Brand Extruded Polystyrene Insulation and Dow polyurethane foam sealants, a building performs more efficiently. STYROFOAM™ Brand Insulation and Dow polyurethane foam sealants provide:

- Excellent long-term thermal performance

- Unparalleled moisture resistance
- Ease of use
- Reusability (STYROFOAM™ Brand Insulation)

INTERIOR WALL INSULATION

PRODUCTS:

- STYROFOAM™ Brand SM Insulation
- GREAT STUFF PRO™ Gaps & Cracks Insulating Foam Sealant

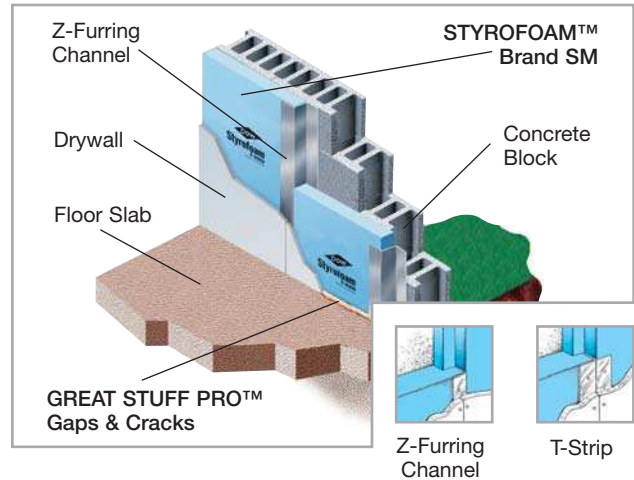
APPLICATION:

STYROFOAM™ Brand SM Extruded Polystyrene Insulation is precut to 24" x 96" boards that can be installed between furring channels placed on 24" centers.

Meets CAN/ULC S701 Type 2

Apply GREAT STUFF PRO™ Gaps & Cracks Insulating Foam Sealant at wall/floor joint.

Note: Consult the label and Material Safety Data Sheet carefully before use.



EXTERIOR APPLICATIONS

On the exterior of the structural wall, STYROFOAM™ Brand Extruded Polystyrene Insulation contributes to improved energy efficiency. Because it is moisture-resistant, STYROFOAM™ Brand Insulation delivers long-lasting thermal performance in

the harsh, wet cavity wall environment. Sized to fit snugly between wall ties, STYROFOAM™ Brand CAVITYMATE™ Extruded Polystyrene Insulation saves time and money on the job site.

CAVITY WALL – BLOCK BACKED

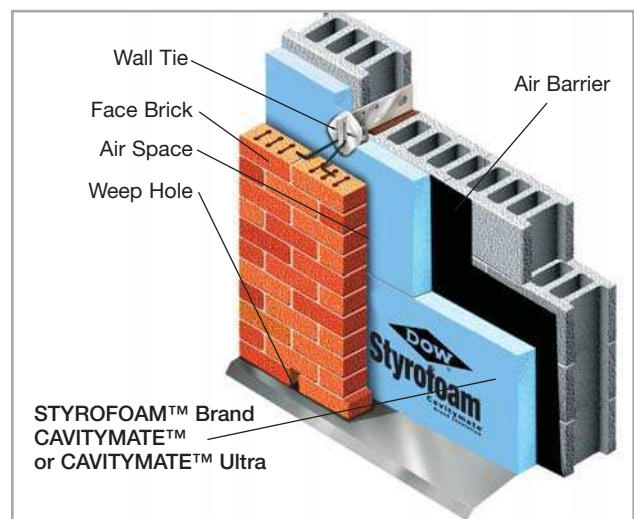
PRODUCTS:

- STYROFOAM™ Brand CAVITYMATE™ Insulation
- STYROFOAM™ Brand CAVITYMATE™ Ultra Insulation

APPLICATION:

Installed directly between the wall ties, STYROFOAM™ Brand CAVITYMATE™ Insulation eliminates the need to cut or snap the correct dimension.

	STYROFOAM™ CAVITYMATE™	STYROFOAM™ CAVITYMATE™ Ultra
Board Size	400 mm x 2400 mm 600 mm x 2400 mm	400 mm x 2400 mm 600 mm x 2400 mm
R-Value (per inch)	R=5.0	R=5.6
CAN/ULC S701	Type 3	Type 3
Compressive Strength	25 psi	25 psi



For more detailed installation information, contact your Dow representative or refer to the product literature.

®/™Trademark of The Dow Chemical Company ("Dow") or an affiliated company of Dow

CAVITY WALL – STEEL STUD

PRODUCTS:

- STYROFOAM™ Brand CAVITYMATE™ SC Insulation
- WEATHERMATE™ Straight Flashing

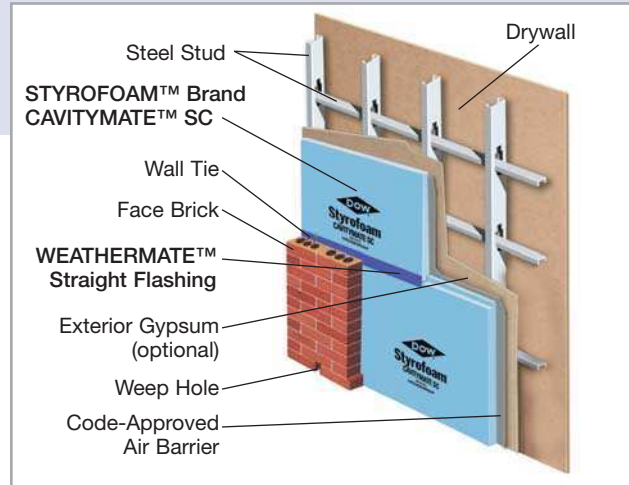
APPLICATION:

Install rigid foam insulation as an exterior cladding on steel stud walls in new commercial and residential high-rise buildings.

Available in 2' x 8' boards.

Meets CAN/ULC S701 Type 2

For a tear-resistant seal that resists water intrusion, Dow recommends taping seams between insulation boards with WEATHERMATE™ Straight Flashing.



EXTERIOR PRECAST PANEL APPLICATIONS

Used in insulated precast and prestressed panel construction, STYROFOAM™ Brand Extruded Polystyrene Insulation combines long-lasting thermal performance and condensation control with the added strength of concrete.

PRODUCTS:

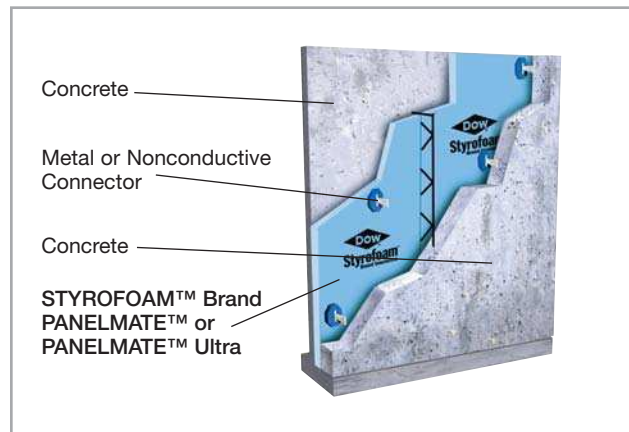
- STYROFOAM™ Brand PANELMATE™ Insulation
- STYROFOAM™ Brand PANELMATE™ Ultra Insulation

APPLICATION:

Concrete is poured on both sides of the foam and the composite panel is held together structurally with connectors.

Available in 600 mm x 2400 mm boards.

Meets CAN/ULC S701 Type 2 (STYROFOAM™ Brand PANELMATE™) and Type 3 (STYROFOAM™ Brand PANELMATE™ Ultra)



ONE- AND TWO-COMPONENT POLYURETHANE FOAM SEALANTS FOR WALLS

PRODUCTS:

- FROTH-PAK™ Foam Sealant
- GREAT STUFF PRO™ Gaps & Cracks Insulating Foam Sealant
- GREAT STUFF PRO™ Window & Door Insulating Foam Sealant

APPLICATION:

FROTH-PAK™ Foam Sealant is ideal for sealing larger areas, over 3" (75 mm), such as wall/roof junctures or large penetrations. GREAT STUFF PRO™ Gaps & Cracks Insulating Foam Sealant is ideal for sealing smaller areas, such as the joints between walls and ceilings and small gaps around pipe penetrations. GREAT STUFF PRO™ Window & Door Insulating Foam Sealant fills gaps around window and door frames without causing bowing, when properly applied.

Note: Consult the label/instructions and Material Safety Data Sheets carefully before use.



STYROFOAM™ BRAND EXTRUDED POLYSTYRENE INSULATION

Physical Properties	Property (Units)	Thermal Resistance ⁽¹⁾ min. R-value per inch @ 75°F mean temp (RSI per 25 mm @ 24°C mean temp)	Compressive Strength lb/in ² (kPa) min. ⁽²⁾	Flexural Strength, lb/in ² (kPa) min.	Water Absorption (% by volume) max.	Water Vapour Permeance ⁽³⁾ , max. perm (ng/Pa·s·m ²)	Coefficient of Linear Thermal Expansion, 10 ⁻³ in/in·°F (10 ⁻³ mm/mm·°C)	Complies with CAN/ULC S701, Type	Maximum Use Temperature, °F (°C)	Treatment	Width (inches unless otherwise indicated)	Length (inches unless otherwise indicated)	Typical Thickness (inches unless otherwise indicated)
ASTM Method	C518, C177	D1621	C203	D2842	E96	D696							
CAVITYMATE™	5.0 (0.87)	25 (170)	43 (300)	0.7	1.5 (90)	3.5 (6.3)	3	165 (74)	BE SL	400mm 600mm	2400mm 2400mm	40mm-75mm 50mm-75mm	
CAVITYMATE™ SC	5.0 (0.87)	16 (110)	35 (240)	1.9	1.5 (90)	3.5 (6.3)	2	165 (74)	SL	24	96	1-2	
CAVITYMATE™ Ultra	5.6 (0.97)	25 (170)	43 (300)	0.7	1.5 (90)	3.5 (6.3)	3	165 (74)	BE SL	400mm 600mm	2400mm 2400mm	68mm-91mm 55mm-75mm	
DECKMATE™	5.0 (0.87)	16 (110)	35 (240)	0.9	1.5 (90)	3.5 (6.3)	2	165 (74)	SL	24	96	1-4	
DECKMATE™ Plus	5.0 (0.87)	20 (140)	43 (300)	0.7	1.5 (90)	3.5 (6.3)	3	165 (74)	SL	24	96	4	
DECKMATE™ Plus FA (flat and tapered)	5.0 (0.87)	25 (170)	25 (170)	0.9	1.1 (66)	3.5 (6.3)	3	165 (74)	SL	24	96	1-4 Slopes: 1/8", 1/4" and 1/2" per foot	
HIGHLOAD 40	5.0 (0.87)	40 (275)	70 (480)	0.7	1.0 (60)	3.5 (6.3)	4	165 (74)	BE	24	96	1-3	
HIGHLOAD 60	5.0 (0.87)	60 (420)	85 (585)	0.7	0.6 (35)	3.5 (6.3)	4	165 (74)	BE	24	96	1-3	
HIGHLOAD 100	5.0 (0.87)	100 (690)	85 (585)	0.7	0.6 (35)	3.5 (6.3)	4	165 (74)	BE	24	96	2	
PANELMATE™	5.0 (0.87)	16 (110)	35 (240)	0.9	3.5 (210)	3.5 (6.3)	2	165 (74)	BE	24	96	custom sizes	
PANELMATE™ Ultra	5.6 (0.97)	25 (170)	43 (300)	0.7	1.5 (90)	3.5 (6.3)	3	165 (74)	BE	24	96	custom sizes	
PERIMATE™	5.0 (0.87)	30 (210)	50 (350)	0.7	1.0 (60)	3.5 (6.3)	4	165 (74)	SL	24	96	2-1/8	
RECOVERMATE CR	1.5 ⁽⁴⁾ (0.26)	15 (105)	-	0.2	-	3.5 (6.3)	-	165 (74)	BE	48	600	3/8	
ROOFMATE™	5.0 (0.87)	35 (240)	50 (350)	0.7	0.8 (45)	3.5 (6.3)	4	165 (74)	BE SL	24 24	48 48	1 1.5-4	
STYROFOAM™ SM	5.0 (0.87)	30 (210)	50 (350)	0.7	0.9 (50)	3.5 (6.3)	4	165 (74)	BE SL SL	24 600mm 600mm	96 2400mm 2400mm	1-4 50mm, 75mm 50mm, 75mm 1-4	

(1) R means resistance to heat flow. R-values are expressed in ft²•h•°F/Btu. RSI (R-Value Système Internationale) values are expressed in m²•°C/W.

(2) Vertical compressive strength is measured at 10% deformation (5% for STYROFOAM™ Brand HIGHLOAD 40, 60 and 100 Insulation) or at yield, whichever occurs first. Since STYROFOAM™ Brand Extruded Polystyrene Insulation is a visco-elastic material, adequate design safety factors should be used to prevent long-term creep and fatigue deformations.

(3) Water vapour permeance varies with product type and thickness. Values are based on the desiccant method, and they apply to insulation 1" (25 mm) in thickness. Thicker products have lower permeance.

(4) For 3/8" (0.95 cm) thickness.

Note: Not all products or sizes are available in all parts of the country. Other product sizes are available on a made-to-order basis. Contact your Dow representative for information.

WEATHERMATE™ STRAIGHT FLASHING

Property	Value
Water Vapour Transmission, ASTM E96, perm	<1
Application Temperature, min.	30°F (-1°C)
UV Resistance, days	120
Size	4' x 100' (100 mm x 30.5 m), 6' x 100' (150 mm x 30.5 m), 9' x 100' (225 mm x 30.5 m)

DOW POLYURETHANE FOAM SEALANTS AND ADHESIVES

Product	Cure Time	Size	Yield ⁽¹⁾
FROTH-PAK™ Foam Sealant ^(2,3)	Tack-free <1 min.	Selection of kit sizes and refill systems available	Kits: 10-550 bd ft (.02-1.3 m ²) Refill systems: 1,700-40,300 bd ft (4-95 m ²)
GREAT STUFF PRO™ Gaps & Cracks ⁽⁴⁾	Tack-free within 6 mins, trim in 30; full cure 1 hour	20 oz (567 g) can, reusable straw 20 oz (567 g) can, gun 26 oz (737 g) can, reusable straw 26 oz (737 g) can, gun	646 ft (197 m) ⁽⁵⁾ 839 ft (256 m) ⁽⁵⁾ 867 ft (264 m) ⁽⁵⁾ 1,142 ft (348 m) ⁽⁵⁾
GREAT STUFF PRO™ Window & Door ⁽⁴⁾	Tack-free within 9 mins, trim 1 hour; full cure 12 hours	20 oz (567 g) can, reusable straw 20 oz (567 g) can, gun 24.5 oz (695 g) can, reusable straw 24.5 oz (695 g) can, gun	6-9 windows ⁽⁶⁾ 8-11 windows ⁽⁶⁾ 8-11 windows ⁽⁶⁾ 11-14 windows ⁽⁶⁾
INSTA STIK™ Quik Set	Tack-free 3-7 mins, depending on humidity	31 lb (14.1 kg) canister only (23 lb [10.4 kg] net chemical weight)	8 squares/tank (refer to E-Z Estimating Guide, Form No. 178-00556)
TILE BOND™	Tack-free 5-15 mins	30 lb (13.6 kg) complete (canister with gun/hose assembly); 30 lb (13.6 kg) canister only; 28 oz (794 g) can with reusable straw	Up to 500 field tiles for 30 lb

- (1) For estimated yields at other product sizes, bead sizes and conditions, contact your Dow representative or call 1-866-583-BLUE (2583).
 (2) FROTH-PAK™ products are available in a selection of densities, formulations and sizes to meet a wide range of project specifications.
 (3) Actual cure time will depend on temperature, foam thickness, the specific nozzle used, etc.
 (4) Actual cure time will depend on temperature, relative humidity and size of foam bead.
 (5) Estimated yield under ideal conditions based on gun foam, 3/8" (0.95 cm) bead.
 (6) Estimated yield (gun foam) under ideal conditions for 36" x 60" window, 3/8" (0.95 cm) wide gap, 1" (2.5 cm) deep, 3/8" (0.95 cm) bead.

WE'RE HERE TO HELP

If you don't find the information you need, please contact us. We can provide technical assistance from the planning stage through completion.

For additional information, an architectural binder or technical/sales literature, call:
 1-866-583-BLUE (2583) (English)
 1-800-363-6210 (French)

For product availability or a Dow sales representative, call:
 1-800-232-2436 (English)
 1-800-565-1255 (French)

WWW.DOWBUILDINGSOLUTIONS.COM

®/™Trademark of The Dow Chemical Company ("Dow") or an affiliated company of Dow

A RECOGNIZED INDUSTRY
LEADER IN ENERGY-EFFICIENT
SOLUTIONS FOR MORE THAN 60
YEARS, DOW IS COMMITTED TO
DEVELOPING INNOVATIVE
PRODUCT SOLUTIONS TO HELP
SOLVE THE WORLD'S ENERGY
AND CLIMATE CHALLENGES.

TO LEARN HOW TO MAKE YOUR MARK, CALL YOUR
DOW REPRESENTATIVE AT 1-866-583-BLUE (2583)
FOR MORE DETAILS, OR VISIT
WWW.DOWBUILDINGSOLUTIONS.COM.

For Technical Information: 1-866-583-BLUE (2583) (English) . 1-800-363-6210 (French)

For Sales Information: 1-800-232-2436 (English) . 1-800-565-1255 (French)

DOW CHEMICAL CANADA ULC . Dow Building Solutions . Suite 2100 . 450 – 1st St., SW . Calgary, AB T2P 5H1
www.dowbuildingsolutions.com



Illustrations are not intended to replace the need for design by appropriate professionals such as architects or engineers.

Dow has manufactured STYROFOAM™ Brand Extruded Polystyrene Insulation for use in construction and specialty applications for more than 60 years. Its dense closed-cell structure gives STYROFOAM™ Brand Extruded Polystyrene Insulation excellent moisture resistance, long-term thermal performance and compressive strength. STYROFOAM™ Brand Extruded Polystyrene Insulation is reusable.

NOTICE: No freedom from any patent owned by Dow or others is to be inferred. Because use conditions and applicable laws may differ from one location to another and may change with time, Customer is responsible for determining whether products and the information in this document are appropriate for Customer's use and for ensuring that Customer's workplace and disposal practices are in compliance with applicable laws and other government enactments. Dow assumes no obligation or liability for the information in this document. NO EXPRESS WARRANTIES ARE GIVEN EXCEPT FOR ANY APPLICABLE WRITTEN WARRANTIES SPECIFICALLY PROVIDED BY DOW. ALL IMPLIED WARRANTIES INCLUDING THOSE OF MERCHANTABILITY AND FITNESS FOR A PARTICULAR PURPOSE ARE EXPRESSLY EXCLUDED.

CAUTION: This product is combustible. Protect from high heat sources. A protective or thermal barrier may be required as specified in the appropriate building code. For more information, consult MSDS, call Dow at 1-866-583-BLUE (2583) or contact your local building inspector. In an emergency, call 1-519-339-3711.

WARNING: Rigid foam insulation does not constitute a working walkable surface or qualify as a fall protection product.

FROTH-PAK™ Polyurethane Spray Foam contains isocyanate, hydrofluorocarbon blowing agent and polyol. Read the instructions and Material Safety Data Sheets carefully before use. Wear protective clothing, gloves, goggles or safety glasses, and proper respiratory protection. Supplied air or an approved air-purifying respirator equipped with an organic vapour sorbent and a particle filter may be required to maintain exposure levels below ACGIH, OSHA, WEEL or other applicable limits. Provide adequate ventilation. Contents under pressure.

GREAT STUFF PRO™ Insulating Foam Sealants contain isocyanate and a flammable blowing agent. Read the label and Material Safety Data Sheet carefully before use. Eliminate all sources of ignition before use. Wear gloves, and goggles or safety glasses. Provide adequate ventilation or wear proper respiratory protection. Contents under pressure.

INSTA STIK™ Quik Set Commercial Roofing Adhesive and TILE BOND™ Roof Tile Adhesive contain isocyanate and a hydrofluorocarbon blowing agent. Read the label and Material Safety Data Sheet carefully before use. Wear gloves, and goggles or safety glasses. Provide adequate ventilation or wear proper respiratory protection. Contents under pressure.

Building and/or construction practices unrelated to building materials could greatly affect moisture and the potential for mould formation. No material supplier including Dow can give assurance that mould will not develop in any specific system.

Published in November 2008

