

PRO Series Foam Dispensing Guns

RESTARTABILITY

All PRO Series foam dispensing guns are designed to create an air- and moisture-tight seal between the gun and the can. This prevents the foam from curing and blocking the dispensing valve. When storing foam, always store can upright with gun attached securely to the top of the can and gun flow control mechanism tightened fully.

PINPOINT CONTROL

Each PRO gun features a flow control screw mechanism that permits dispensing beads from 1/8" to 3" (0.3 cm to 8 cm) precisely where needed. One-hand operation enables quick and easy application. Gun tips allow attachment of straw for hard-to-reach areas.

MAXIMUM YIELD

Restartability combined with pinpoint control allows maximum foam yield from every can. There is no post-dispensing foam drip, helping reduce foam waste and minimize cleanup. High yield and minimal waste add up to lower costs.



PRO 15

- Premium model with stainless steel barrel for longer life
- Nonstick can adapter, needle and check valve
- Smooth dispenser tip



PRO 14

- Nonstick can adapter and needle
- Stainless steel check valve
- Replaceable barbed dispenser tip
- Available in 7.75" and 26.5" (0.2 m to 0.7 m) length barrels



PRO 13

- Economical model
- Barbed dispenser tip

GREAT STUFF PRO™ Gun Cleaner

- Innovative solution simplifies uncured polyurethane foam cleanup
- Works with PRO Series foam dispensing guns
- Inexpensive and easy to use
- Formulated to give exceptional results cleaning uncured foam from gun or can surface



INCLUDES TWO OPERATING ATTACHMENTS:



Cleaner with black gun adapter mechanism.



Cleaner with red spray nozzle attached.



Attach gun to can.



Clean residual uncured foam from inside of gun.



Remove uncured foam from gun.



Remove uncured foam from gun adapter on can.

For professional results, turn PRO with Dow.

NOTICE: No freedom from any patent owned by Dow or others is to be inferred. Because use conditions and applicable laws may differ from one location to another and may change with time, Customer is responsible for determining whether products and the information in this document are appropriate for Customer's use and for ensuring that Customer's workplace and disposal practices are in compliance with applicable laws and other government enactments. Dow assumes no obligation or liability for the information in this document. NO EXPRESS WARRANTIES ARE GIVEN EXCEPT FOR ANY APPLICABLE WRITTEN WARRANTIES SPECIFICALLY PROVIDED BY DOW. ALL IMPLIED WARRANTIES INCLUDING THOSE OF MERCHANTABILITY AND FITNESS FOR A PARTICULAR PURPOSE ARE EXPRESSLY EXCLUDED.

COMBUSTIBLE: Protect from heat sources. For more information, consult MSDS, call Dow at 1-866-583-BLUE (2583) or contact your local building inspector. In an emergency, call 1-989-636-4400 in the U.S. or 1-519-339-3711 in Canada.

GREAT STUFF PRO™ sealants and adhesive contain isocyanate and a flammable blowing agent. Read the label and Material Safety Data Sheet carefully before use. Eliminate all sources of ignition before use. Wear gloves, and goggles or safety glasses. Provide adequate ventilation or wear proper respiratory protection. Contents under pressure.

GREAT STUFF PRO™ Gun Cleaner is flammable and contains acetone and propane. Read the label and Material Safety Data Sheet carefully before use. Eliminate all sources of ignition before use. Wear gloves, and goggles or safety glasses. Provide adequate ventilation or wear proper respiratory protection. Contents under pressure.

Building and/or construction practices unrelated to building materials could greatly affect moisture and the potential for mold formation. No material supplier including Dow can give assurance that mold will not develop in any specific system.

THE DOW CHEMICAL COMPANY • Dow Building Solutions • 200 Larkin • Midland, MI 48674
FOR TECHNICAL INFORMATION: 1-866-583-BLUE (2583) • FOR SALES INFORMATION: 1-800-232-2436

DOW CHEMICAL CANADA INC. • Dow Building Solutions • Suite 2100 • 450 – 1st St. SW • Calgary, AB T2P 5H1
FOR TECHNICAL INFORMATION: 1-866-583-BLUE (2583) (English); 1-800-363-6210 (French)
FOR SALES INFORMATION: 1-800-232-2436 (English); 1-800-565-1255 (French)
www.insulateyourhome.com



Printed in U.S.A.



©™Trademark of The Dow Chemical Company ("Dow") or an affiliated company of Dow
Habitat for Humanity is a registered service mark owned by Habitat for Humanity International



Form No. 179-07481-0708P&M
178-00460-0708P&M



PROfessionally Sealed

WITH GREAT STUFF PRO™ PRODUCTS

GREAT STUFF PRO™ Gaps & Cracks Insulating Foam Sealant

GREAT STUFF PRO™ Gaps & Cracks Insulating Foam Sealant is a minimal-expanding gap/crack filler and fireblock penetration sealant easily identified by its bright orange color. Available in 20 oz (567 g) and 26 oz (737 g) reusable gun- and straw-applied versions.



SAVES ENERGY

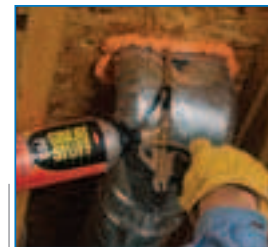
- Blocks drafts
- Enhances occupant comfort
- More effective than fiberglass

MINIMAL-EXPANDING FORMULATION

- Fills holes and cracks
- Forms a permanent, airtight and water-resistant bond
- Fills, seals and insulates gaps up to 3" (75 mm)*

PROFESSIONALLY SEALED

Use GREAT STUFF PRO™ Gaps & Cracks to seal and insulate many areas around the home such as foundation, attic, and electrical and mechanical penetrations.



HVAC vent



Electrical wire penetration



Plumbing penetration



Fireplace gas line

OUTSTANDING PRODUCT PERFORMANCE

- First foam to be recognized as a fireblock
- Tack-free in 6 minutes; trims within 30 minutes
- Freeze/thaw stable
- Foam elasticity allows for movement within a structure
- Paintable/sandable

HIGH YIELD**

- High effective yield (20 oz [567 g] can: 839 linear feet (256 m); 26 oz [737 g] can: 1,142 linear feet (348 m))
- 20 oz can equivalent up to 19 quart tubes of caulk; 26 oz can: 26 tubes

GREAT STUFF PRO™ Window & Door Insulating Foam Sealant

GREAT STUFF PRO™ Window & Door Insulating Foam Sealant is exclusively formulated to stop drafts by air sealing the gap between the window or door and its rough opening.



SAVES ENERGY

- Provides insulation value, complementing window/door energy efficiency
- Blocks drafts
- Enhances occupant comfort
- More effective than fiberglass

LOW PRESSURE-BUILD FORMULATION

- Low pressure-build formulation proven not to distort or bow window and door frames when applied properly
- Forms a durable, airtight, moisture-resistant bond

OUTSTANDING PRODUCT PERFORMANCE

- Tack-free in 8 minutes; trims within 30 minutes
- Moisture-resistant foam skin
- Flexible seal remains pliable during expansion and contraction
- Soft, pliable yellow foam is easy to push and reposition if gap is overfilled
- High effective yield (20 oz [567 g] can foams 6-9 windows; 24.5 oz [695 g] can foams 10-14 windows)†

GREAT STUFF PRO™ Wall & Floor Adhesive is ideal for securing subfloors.



GREAT STUFF PRO™ Wall & Floor Adhesive

GREAT STUFF PRO™ Wall & Floor Adhesive is a premium-grade, heavy-duty adhesive for interior and exterior use. Available in 24 oz (690 g) cans.

SECURES COMMON SUBSTRATES

- Drywall
- Interior acoustical ceiling tiles
- Lumber, particleboard and plywood
- Masonry, tile and concrete
- STYROFOAM™ Brand Extruded Polystyrene Insulation

BENEFITS

- Excellent bonding power; fewer fasteners are required in drywall applications
- Adheres to dry, damp and frozen lumber
- All-weather formulation enhances productivity
- Fast-grab tack; initial bond in approximately 2 hours when applied properly
- High yield (one can equivalent up to 16 quart tubes of caulk adhesive**)
- Long-term bond reduces likelihood of drywall nail pops and floor squeaks
- Recommended use with ICF (insulated concrete form) and SIP (structural insulated panel) construction



Reduce nail pops in drywall attachment and use fewer fasteners with GREAT STUFF PRO™ Wall & Floor Adhesive.



Dow Building Solutions

©™Trademark of The Dow Chemical Company ("Dow") or an affiliated company of Dow

*For gaps and cracks greater than 3" (75 mm), use FROTH-PAK™ FS Foam Insulation Kit (U.S. only) or FROTH-PAK™ Foam Sealant Kit.

**Estimated yield under ideal conditions based on gun foam, 3/8" (0.9 cm) bead.

©™Trademark of The Dow Chemical Company ("Dow") or an affiliated company of Dow

†Estimated yield (gun foam) under ideal conditions for 36" x 60" (0.9 m x 1.5 m) window, 3/8" (0.9 cm) wide gap, 1" (25 mm) deep, 3/8" bead.

©™Trademark of The Dow Chemical Company ("Dow") or an affiliated company of Dow

**Estimated yield under ideal conditions based on gun foam, 3/8" (0.9 cm) bead.