
DRAINAGE MAT/DRAINAGE WRAP

Packaging**Drainage Mat:**

991 mm x 76.2 m (39" x 250') roll
100 mm x 76.2 m (4" x 250') per roll

Drainage Wrap:

1016 mm x 38.1 m (40" x 125') roll

Coverage**Drainage Mat:**

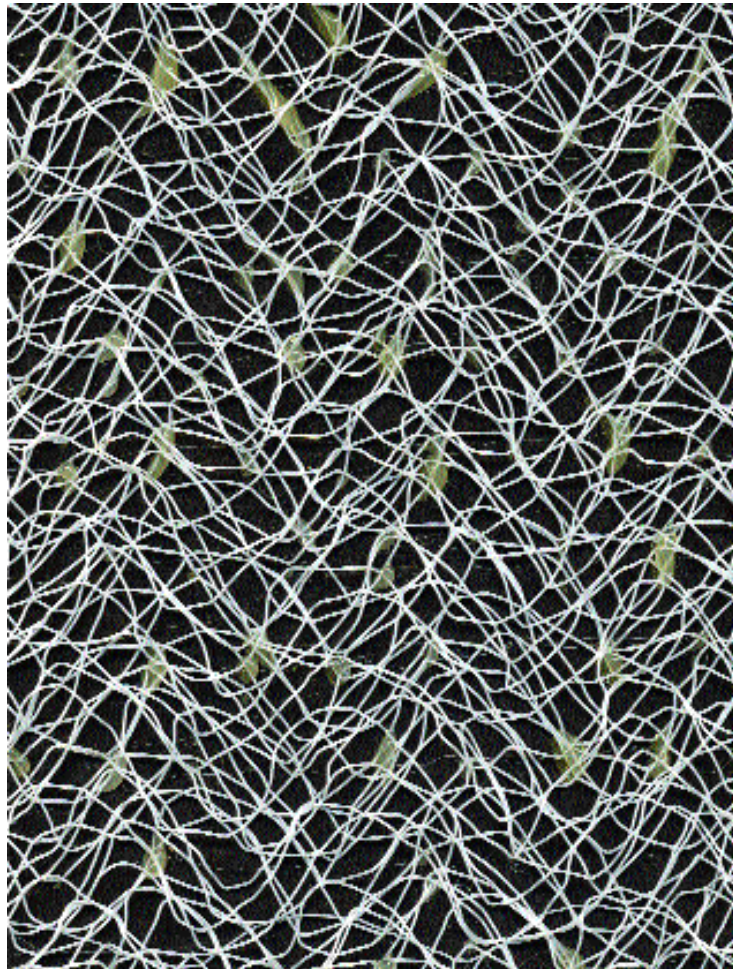
39" rolls, 75.4 m² (812 ft²)
4" rolls, 7.7 m² (83.3 ft²)

Drainage Wrap:

38.6 m² (416 ft²)

Storage

Store off ground, under cover,
protected from direct sunlight,
weather and construction activities.



Finestone Drainage Mat is a three-dimensional drainage system core component consisting of fused, entangled filaments. Attached over approved secondary moisture barriers. It creates an unobstructed drainage path to quickly evacuate incidental moisture that enters behind an exterior wall cladding.

Drainage Wrap is a patented, advanced secondary weather barrier that bonds Drainage Mat to 60-minute building paper.

Drainage Mat/Drainage Wrap

FEATURES	ADVANTAGES
Drainage Mat/Drainage Wrap	
<ul style="list-style-type: none">• Lightweight• Non-scratch nylon construction• Entangled filament construction	<ul style="list-style-type: none">• Easy to handle• Provides flexibility; enhances easy application• Creates optimal drainage plane while retaining flexibility
Drainage Wrap	
<ul style="list-style-type: none">• Mat covers building paper• Combines two steps into one• 60 minute building paper• Bonding can be easily separated• Mat is 3" narrower than the building paper	<ul style="list-style-type: none">• Provides building paper during installation• Saves labor cost• Provides superior moisture resistance versus 15 pound felt• Allows wrapping paper easily into opening, vertical overlaps and other points where the mat is not needed• Self-aligning; easy to install

Recommended Uses

For use with the Pebbletex-D and Quick Clad D-7 systems to provide an avenue for flow and drainage of incidental moisture from the wall assembly.

Limitations

Protect during transportation and installation to avoid physical damage.

Best to install immediately prior to mechanically attaching insulation board.

Do not leave installed Drainage Wrap exposed to weather for more than 30 days.

Application

Drainage Mat

General: Substrate must be flat and free of planar irregularities greater than 6.4 mm in 3 m (1/4" in 10')

Apply Finestone Drainage Mat horizontally or vertically over secondary moisture protection barrier. Finestone Drainage Mat should be free of wrinkles.

Abut all vertical and horizontal edges.

Secure Finestone Drainage Mat to substrate with sufficient building staples or galvanized nails to remain in place prior to application of insulation board.

Apply Finestone Wall System materials in accordance with corresponding specifications and details.

Drainage Wrap

General: Substrate must be flat and free of planar irregularities greater than 6.4 mm in 3 m (1/4" in 10')

Apply Drainage Wrap horizontally over the approved substrate. Drainage Wrap should be free of punctures, wrinkles, creases and tears.

Overlap Drainage Wrap building paper a minimum of 5 cm (2") horizontally and 15.4 cm (6") vertically or as specified by the local building code. Do not overlap the Drainage Wrap.

Secure Drainage Wrap to substrate with sufficient building staples or galvanized nails to remain in place prior to application of exterior cladding system.

Apply Wall System materials in accordance with corresponding specifications and details.

Technical Support

For further details, specifications, questions, specific recommendations, or the most recent product information, please consult Finestone Technical Services: Toll-free 866-659-3133; 1-904-996-6100 or our website, www.finestone.cc.

Health and Safety Information

CAUTION

May be harmful if vapors or mist are inhaled, if absorbed through skin, or if swallowed. May cause eye, skin and respiratory tract irritation. Swallowing this product can cause kidney damage.

PRECAUTIONS

Avoid getting in eyes, on skin, or on clothing. Avoid breathing vapors or mist. Wear safety glasses or goggles, impervious gloves, and clothing with long sleeves and pants. If TLV or PEL can be exceeded, wear respirator selected by a technically qualified person. Wash thoroughly after handling. Wash contaminated clothing before reuse.

SPILLS

Wipe up small spills with rags. Absorb larger spills with sand, vermiculite, or kitty litter; sweep up and place in a suitable container for disposal.

FIRST AID

Eyes: For eye contact, rinse eyes with water. Remove any contact lenses, and continue flushing with plenty of water for several minutes. Seek medical attention if irritation develops and persists.

Skin: For skin contact, wash affected areas with plenty of water, and soap if available, for several minutes. Seek medical attention if irritation develops and persists.

Internal: If inhaled, remove from area to fresh air. Seek medical attention if respiratory irritation develops or if breathing becomes difficult.

If swallowed, give 3-4 glasses of water, but do not induce vomiting unless directed to do so by a physician. Do not give anything by mouth to an unconscious or convulsing person. Get medical attention.

Read Material Safety Data Sheet before using this product.

Limited Warranty

Every reasonable effort is made to apply Finestone exacting standards both in the manufacture of our products and in the information, which we issue concerning these products and their use. We warrant our products to be of good quality and will replace or, at our election, refund the purchase price of any products proved defective. Satisfactory results depend not only upon quality products but also upon many factors beyond our control. Therefore, except for such replacement or refund FINESTONE MAKES NO WARRANTY OR GUARANTEE, EXPRESS OR IMPLIED, INCLUDING WARRANTIES OF FITNESS FOR A PARTICULAR PURPOSE OR MERCHANTABILITY, RESPECTING ITS PRODUCTS, and Finestone shall have no other liability with respect thereto, including any liability for incidental or consequential damages. Any claim regarding product defect must be received in writing within thirty days (30) of the date of discovery or one (1) year from the date of shipment which ever is less. No claim will be considered without such written notice or after the specified time interval. User shall determine the suitability of the products for the intended use and assume all risks and liability in connection therewith. Any authorized change in printed recommendations concerning the use of our products must bear the signature of the Finestone Technical Manager. Other warranties may be available from Finestone; however, this warranty shall apply in the absence of any other written warranty signed by an authorized representative of Finestone.

Residential Policy

On one and two-family residential framed construction, FINESTONE requires that the wall system selected be one that includes provisions for moisture drainage. The choices include Pebbletex D line of drainage EIFS, FINESTONE One-Coat Stucco System and Finescreen Cement Board Stucco Systems. There are no exceptions to this policy. Under no circumstances will FINESTONE warrant the use of any other system on this type of construction without expressed written authorization from FINESTONE. [Residential construction using EIFS on masonry (CMU) or poured concrete does not require the additional water management provisions described above.] Consult FINESTONE Technical Service Department for specific recommendations concerning all other applications.

Finestone

3550 Saint John's Bluff Road, South
Jacksonville, FL 32224-2614
Phone: 866-659-3133
Phone: 904-996-6100
Fax: 904-996-6130
www.finestone.cc