

interior surface system



column covers



reveals & moldings



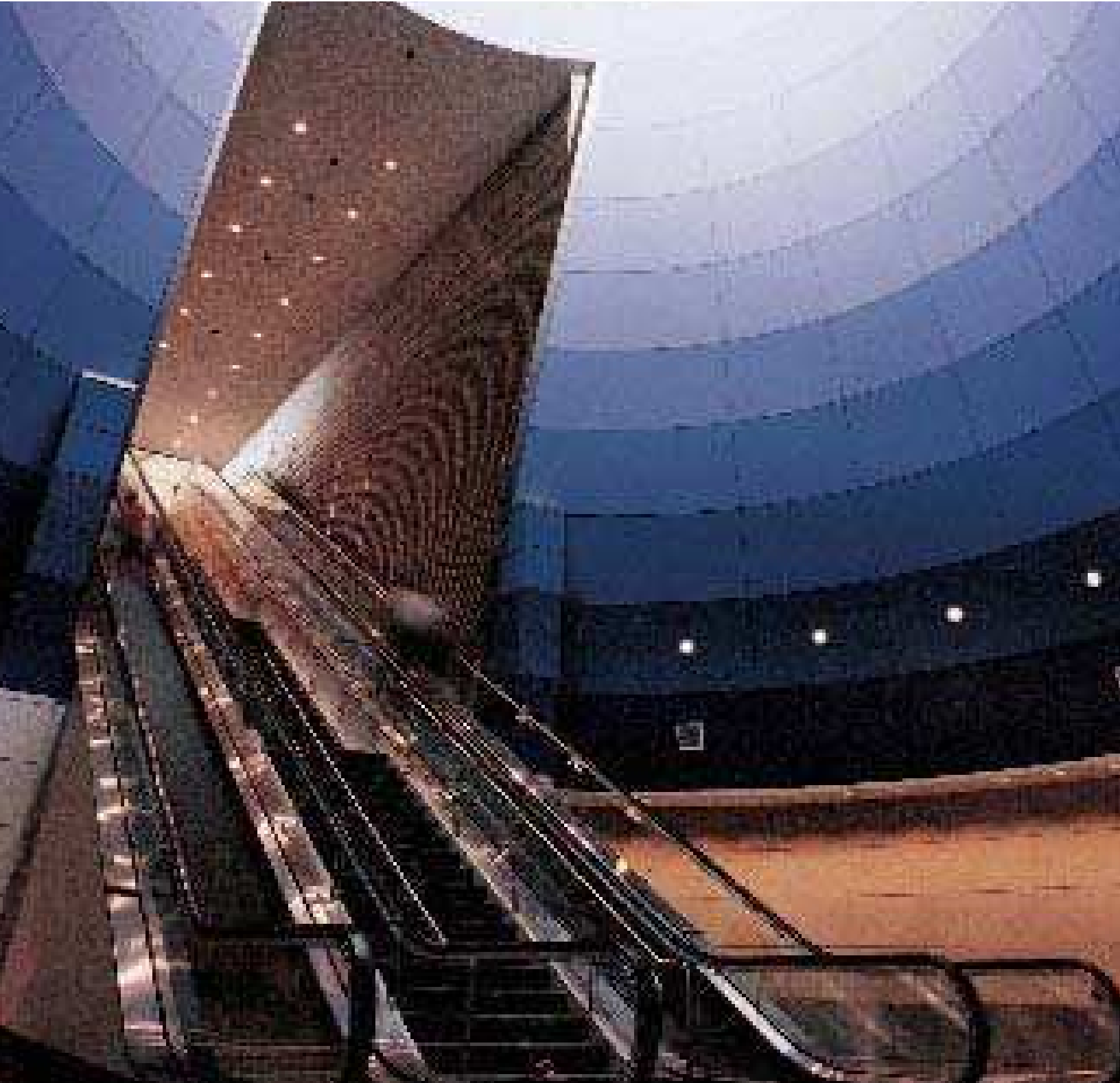
roof flashing

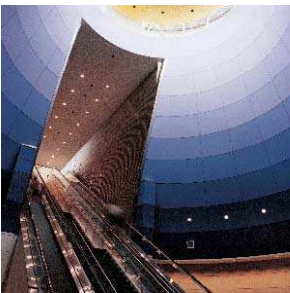
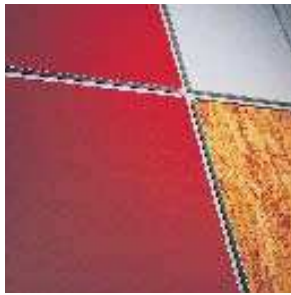


specialty products



support



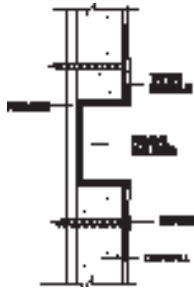


The durability, variety, cost-effectiveness and strength of metal has secured its place in the construction industry. Fry Reglet is a leader in quality engineered, fabricated and finished products. Founded in 1949 with the introduction of a line of roof flashing components, the name "Fry Reglet" has become well known in the architectural community and is synonymous with quality materials and exceptional customer service. Today, in addition to roof flashing components, our line has expanded to include metal wall panels, column covers and aluminum reveals and moldings.

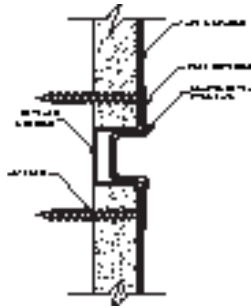
INDEX

Drywall Acoustical Moldings	5
Drywall Column Collars & Rings	5
Drywall Corners	4
Drywall Reveals	3
Drywall Trims	4
Plaster Control Joints	6
Plaster Corners	7
Plaster Drip Screeds	6
Plaster Reveal Moldings	6
Plaster Soffit Vents	7
Plaster Trims	6
Veneer Plaster Moldings	7

All moldings are designed to be taped and spackled and have a 7/8" wide tapered flange or flanges for surface contact with drywall. These flanges are punched with staggered holes for screw fastening. Continuous grooves along flanges provide secure bonding for spackling compound.



Reveal
Creates an attractive vertical or horizontal recess in drywall. Widths from 1/8" to 6" for choice of design effects.



"Snap-in" Reveal
Snaps into reveal moldings to provide a different finish detail. Lip covers edges of wall coverings to conceal edges and prevent peeling.



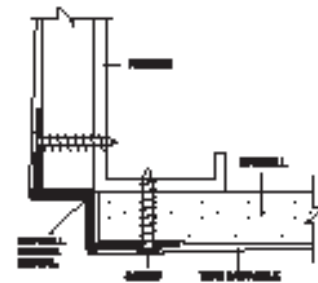
"F" Reveal
Forms wall trim recess where drywall terminates at sill, jamb or ceiling. Supports drywall or acoustical ceiling.



"T" Reveal
Forms a trim reveal around doors or windows or between walls and floors.



Step Trim
Creates a stepped reveal where different layers of drywall (either raised or recessed) meet. Transitions beautifully between thicknesses.



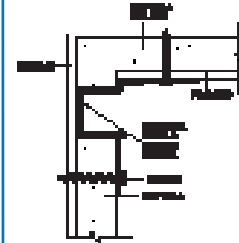
Door Reveal
Creates a pocket at drywall doors. Finishes and reduces to drywall.



Reveal Picture Hanger
Creates a reveal in drywall which can be used for heavy duty picture hanging. Movable 1" wide picture hanger track has hole for picture wire.



"W" Reveal
Creates an attractive reveal and ceiling/wall intersection. Supports the edge of the suspended drywall. Tapeable flange prevents cracking.



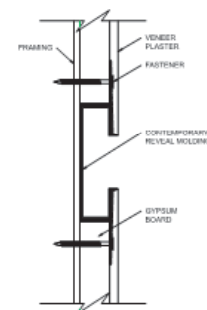
Wall and Ceiling Reveal
Creates a transition between wall and ceiling or (used vertically) between drywall and other material. Supports ceiling. Lip overlaps and finishes drywall edge.



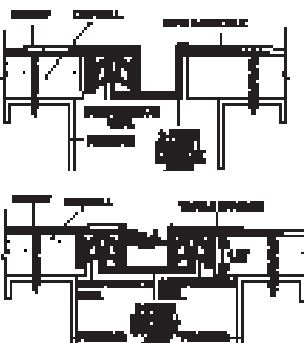
"W" Molding
Provides a finishing reveal at wall/ceiling intersections. Available vented for air flow between room and plenum. Also provides support for the edges of ceilings.



"V" Reveal
Creates a V-shaped recessed reveal for a softer look than rectangular reveals. Reverse "V" Reveal protrudes from wall.

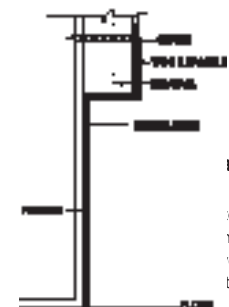


Contemporary Reveal
Provides an attractive vertical or horizontal recess in drywall that creates the illusion the panels are "floating" in space. U.S. Patent # 452,016



2- and 3-Piece Drywall Control Joints
Used in long drywall runs to prevent cracking of drywall joints caused by minor settling in normal building conditions. Continuous compression seal prevents air and dirt infiltration through joint. Forms an attractive reveal consistent with detailing offered by other Fry Reglet reveal moldings.

Compression seals may be used on one or both sides depending on the amount of settling anticipated in the drywall run where the control joint is used.



Base
Forms a recessed base at bottom of finish drywall to form an attractive, damage-resistant recessed base.

All moldings are designed to be taped and spackled and have a 7/8" wide tapered flange or flanges for surface contact with drywall. These flanges are punched with staggered holes for screw fastening. Continuous grooves along flanges provide secure bonding for spackling compound.



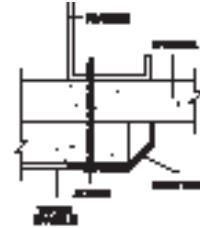
Corner Trim

Heavy duty corner trim used to finish and protect outside corners in high traffic or higher than normal abuse areas.



"L" Trim

Used as trim around raised or recessed wall panels. A variety of depths permits a wide choice of variation in sets between drywall thicknesses.



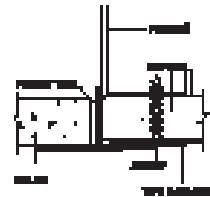
Edge Trim

Used with multiple layers of drywall to provide angled transition to finish joints between layers. Provides attractive trim for recessed or raised panels.



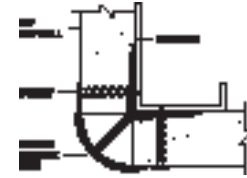
Edge Trim

Finishes and protects edges when various multiple layers of drywall are used to create recessed or raised panels in a wall.



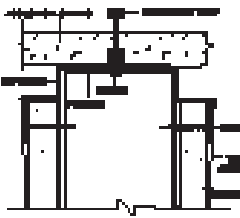
Pocket Trim

Provides a smooth, in-plane transition between drywall ceiling and acoustical ceiling without creating a reveal. Smoothly finishes the joint and supports acoustical ceiling edge.



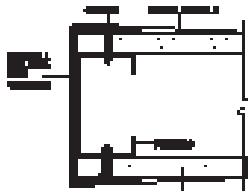
Radius Corner Trim

Heavy duty radius corner trim used to finish and protect outside corners in high traffic areas or where walls are subject to more than normal abuse.



Top Track

Finishes intersection of wall or partition with a ceiling with a clean reveal appearance. With a screw-slot grid system, the top track can be screwed to the ceiling to fasten wall in place.



Drywall Molding End Closure

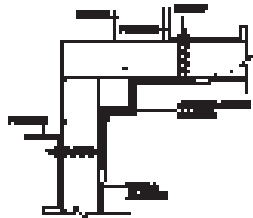
Terminates a wall, partition or cased opening. At wall top, may be screwed into screw-slot grid to hold wall framing in place.



"J" Molding

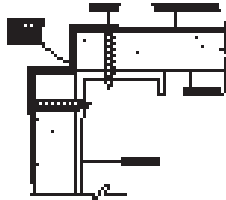
Provides a clean, attractive termination where drywall or wood paneling ends. "J" section receives wall finish and conceals edge with no taping required.

DRYWALL CORNERS



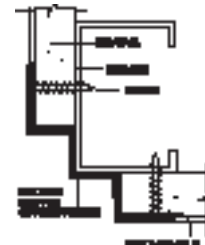
Stepped Inside Corner

Used to finish and accent any inside corner at wall/wall or wall/ceiling intersections. Forms attractive stepped right-angle joint between planes.



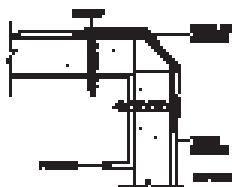
Stepped Outside Corner

Forms an attractive stepped outside corner. Cleanly finishes and protects outside juncture between walls allowing both walls to be taped and spackled.



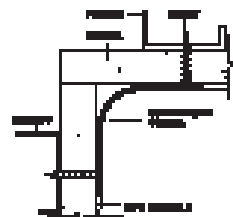
Multiple Stepped Outside Corner

Forms a multi-stepped outside corner in either vertical or horizontal intersection of drywall planes. Finishes and protects corner.



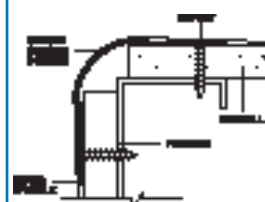
Beveled Corner

A chamfered high-strength corner bead used to finish and protect outside corners of walls. Provides attractive beveled detail. Can be used with drywall of any thickness.



Curved Inside Corner

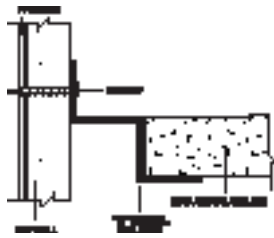
A curved shape used to finish and strengthen inside corners. Smooth curved part combines with tape and spackling for an attractive corner detail.



Curved Outside Corner

A curved section used to protect, strengthen and finish outside corner of wall intersections. Taped and spackled, it finishes a corner beautifully.

All moldings are designed to be taped and spackled and have a 7/8" wide tapered flange or flanges for surface contact with drywall. These flanges are punched with staggered holes for screw fastening. Continuous grooves along flanges provide secure bonding for spackling compound.



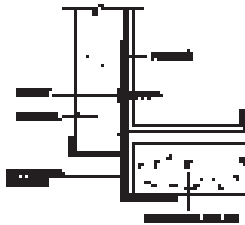
"W" Reveal

Used to form a reveal between wall and suspended ceiling, creating a crisp transition. Provides support for ceiling systems. Available vented for room/plenum air flow.



Drywall/Acoustical Reveal

Used where an acoustical ceiling meets a drywall ceiling. Provides a 1/2" or 3/4" wide reveal joint, a support for acoustical material and a taping flange for finished drywall.



Acoustical Molding

Creates an attractive step or offset between a vertical drywall fascia and an acoustical ceiling. Finishes fascia edge and provides support for acoustical material.



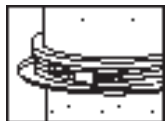
Acoustical Ceiling Trim

Provides a crisp finish between walls and ceilings and affords perimeter support for suspended acoustical ceilings.

COLUMN COLLARS/RINGS

Column Collar

Patented Column Collar provides a functional, attractive trim creating a reveal at column/ceiling joint. PVC spacer insures an attractive appearance and no light leaks. Factory fabricated by Fry Reglet to fit specific column sizes from 10" to 48" in diameter. Tightens in place with a turnbuckle and stainless steel metal band. Available with white or dark bronze PVC spacer. Finish is clear anodized, painted or finished with a chemical conversion coating for field painting. U.S. Patent #4574548.



ADJUSTABLE BAND



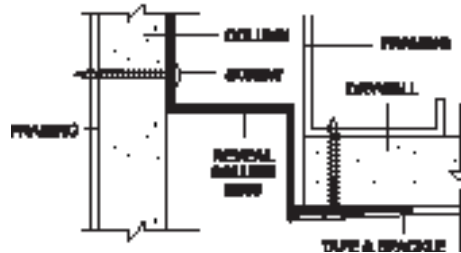
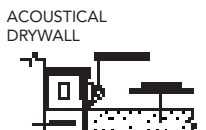
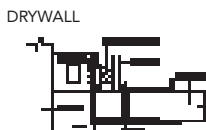
PLASTER SPACER



ALUMINUM MOLDING

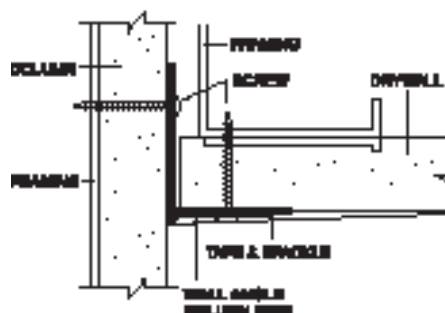
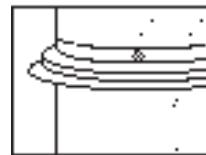


Three simple components secured by adjustable band.



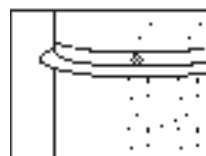
Reveal Column Ring

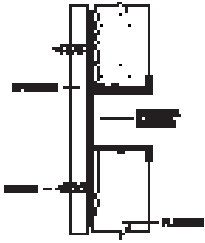
Carefully curved to fit column to provide attractive, economical finish for juncture of a round column and either drywall or acoustical ceiling. Factory fabricated to fit as one full circle or two half circles. For 18" to 48" diameter columns.



Wall Angle Column Ring

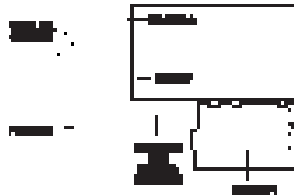
Carefully curved to fit column to provide attractive, economical finish for juncture of round column and either drywall or acoustical ceiling. Available as one full circle or two half circles. Curved to fit columns from 10" to 48" in diameter.





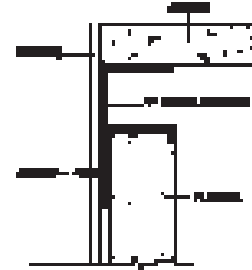
Channel Screed

Gives architectural accents to plaster or stucco walls and ceilings, offering the aesthetic and functional value of control joint performance to help control cracking caused by thermal changes and minor building movement. Used in soffits, channel screeds can be vented to provide soffit ventilation.



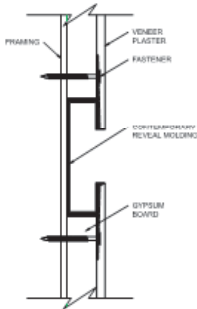
Reveal with Plaster Key

Provides attractive termination and reveal at juncture of walls, plaster ceilings and soffits, as well as at the top of square or round columns. Can be vented when air movement is required and custom radiused to a wide range of curvatures.



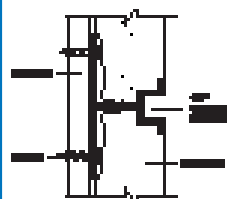
"F" Reveal

Used to form a reveal where plaster terminates against sill, soffit, jamb, window, ceiling or other finish materials. Available vented for air movement when used in soffit applications.



Contemporary Reveal

Provides an attractive vertical or horizontal recess in veneer plaster that creates the illusion the panels are "floating" in space. U.S. Patent # 452,016



1/4" Channel Screed

Plaster control joint that provides a sharply defined, attractive narrow, shallow reveal (1/4" wide and deep) to break the monotony of large, plastered surfaces. Used also to introduce subtle trim in soffits and on fascia. This is a very versatile molding.



"V" Reveal

Creates a "V" shaped reveal in conventional lath and plaster applications that emulates the appearance of the vertical joint in pre-cast or tilt-up panels and at the same time functions as a control joint. Can be used vertically or horizontally. Also available with a narrower, more shallow reveal.

PLASTER DRIP SCREEDS



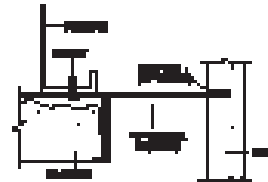
Stucco Drip Screed

Neatly joins soffit and fascia while providing a drip joint to prevent water stains on soffit and vertical wall of building. Available vented if air movement is required. Accommodates a 3/8" plaster fascia and soffit thickness of 7/8" or less.



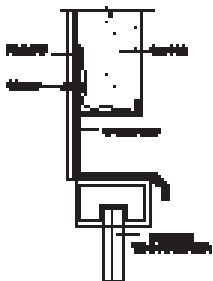
5/8" Drip Screed

5/8" Drip Screed is a special drip screed with 5/8" space dimension on soffit side to support 5/8" soffit material. Protects against soffit staining, finishes soffit/fascia intersection and, with vents, allows air movement above soffit.



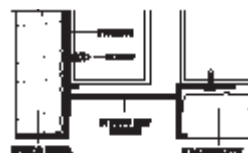
"T" Reveal

A versatile interior or exterior molding which creates a reveal at junction of dissimilar materials. Neatly terminates junction of plaster and stucco materials and can be vented when air movement is required in soffits and ceilings. Controls plaster or stucco movement to avoid cracking. Creates a decorative reveal while providing a screed for plaster or stucco.



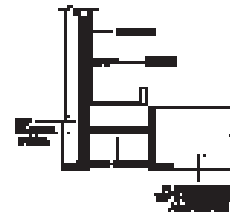
1" Drip Cap

Creates a horizontal reveal and provides an exterior drip cap over top edges of doors and windows. A screed point is provided for neatly stopping stucco above reveal.



Stucco Drip Screed

Provides a reveal joint and screed point in stucco soffits. With vents, it provides a venting capability for soffits.



Drip Screed

Neatly joins soffit and fascia while providing a drip joint to prevent water stains on soffit and vertical wall of building. Can be vented if air movement is required. Accommodates a 3/8" plaster fascia and soffit thickness of 7/8" or less.



Thin Stucco Drip Screed

Prevents staining of 3/4" stucco soffit surfaces. Provides an attractive reveal between fascia and soffit. Available vented for ventilation of areas above soffit.

PLASTER CORNER JOINTS



2-Piece Control Screed

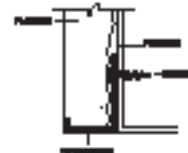
Used inside a building (plaster) or outside (stucco) to prevent wall cracking. Separates wall sections and allows minor independent movement of sections on either side. Installed vertically or horizontally, control joints reveal consistent with the appearance of other Fry Reglet reveal moldings. U.S. Patent #4785601

PLASTER TRIMS



Fascia Corner Molding

Can be applied to fascia corner where an acoustical ceiling joins the vertical surface of plaster, stucco or drywall/veneer plaster systems. Supports edge of ceiling.



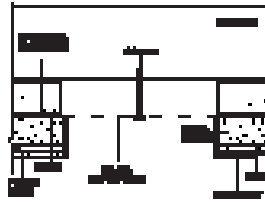
"J" Molding

A basic interior or exterior trim used to terminate and finish plaster, stucco, drywall or wood panels.



Soffit Vent

Functions as a drip screed and provides ventilation to areas above soffit. Separates soffit from fascia with a reveal and adds a sharp uniform edge to soffit/fascia joint. For 7/8" fascia material.



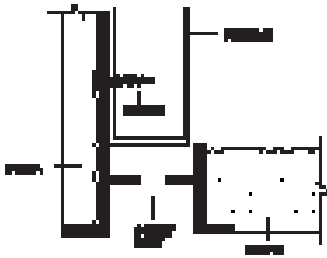
E.I.F.S. Soffit Vent

Designed to be applied after E.I.F.S. application is complete. A 3 inch wide gap in the soffit receives vented molding which is inserted and held in place with appropriate fasteners through to concealed framing in the soffit. Available in 2", 3", 4" widths.



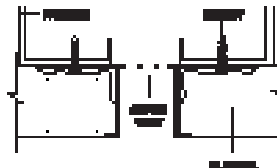
5/8" Soffit Vent

Functions as a drip screed and vent for areas above soffit. Features a 3/8" long bottom leg to support 5/8" soffit material.



Soffit Vent

Functions as a drip screed and provides ventilation to areas above soffit. Separates soffit from fascia with a reveal and adds a sharp uniform edge to soffit/fascia joint.

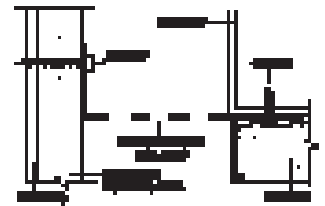


Soffit Vent

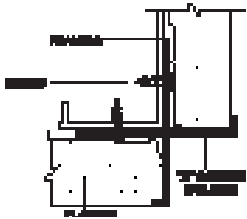
Provides ventilation to areas above soffit and forms an attractive reveal. Accepts plaster depths of 1/2", 5/8", 3/4" or 1".

Vented Soffit Molding

Provides a reveal and venting capability for soffits and a screed point for applying stucco. Can be installed next to building exterior wall or against the inside of the fascia framing.

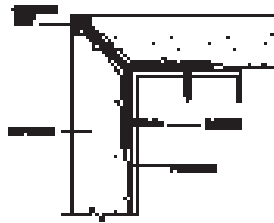


PLASTER CORNERS



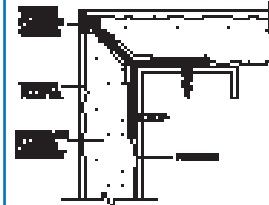
"X" Corner Molding

Creates a stepped edge at the right angle meeting of plaster walls to finish the joint and create an attractive reveal corner.



Corner Key

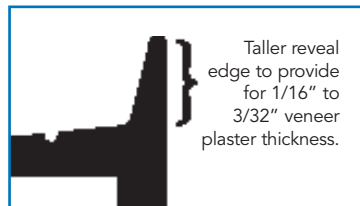
A barely visible corner plaster key that guarantees a clean, crisp, reinforced plaster corner.



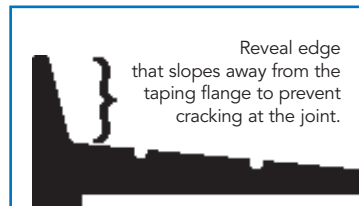
Veneer Plaster Corner
Provides a clean, attractive corner for veneer plaster systems. Provides two screed points to neatly apply base coat and veneer plaster coat.

VENEER PLASTER MOLDINGS

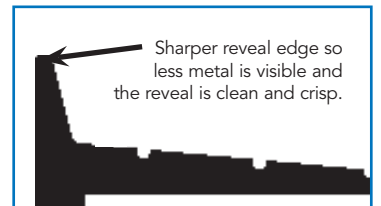
Design Benefits Of Veneer Plaster Moldings



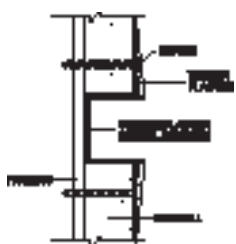
Taller reveal edge to provide for 1/16" to 3/32" veneer plaster thickness.



Reveal edge that slopes away from the taping flange to prevent cracking at the joint.

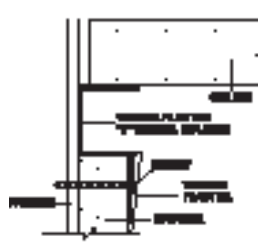


Sharper reveal edge so less metal is visible and the reveal is clean and crisp.



Veneer Plaster Reveal Molding

Creates an attractive vertical or horizontal recessed reveal in veneer plaster. Reveals can become a design element to enhance building interiors. Reveal widths from 3/8" to 3/4" for choice of design effects.



Veneer Plaster "F" Reveal Molding

Used to form wall rim reveal where drywall terminates against sill, jamb, ceiling or other finish material in the same place. Supports ceiling material.



Veneer Plaster "Z" Reveal Molding

Forms a trim reveal around doors and windows or between walls and floors.



FINISH CHOICES

Fry Reglet offers a choice of finishes to meet virtually any specification. All are high quality and applied carefully to provide both appearance and performance.

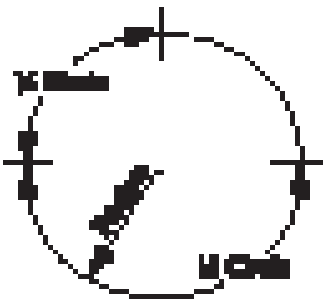
Anodized - standard is clear, available colors are gold and light, medium and dark bronze.

Chemical Conversion Coat - which acts as a protective coating until primer and paint is applied.

Silicone Polyester Enamel - durability and beauty for interior or exterior use in nine standard colors.

Kynar Premium Finish - provides superior resistance to chalking, ultraviolet deterioration, chemicals, salt spray and industrial pollution. Available in black, white or special order custom colors.

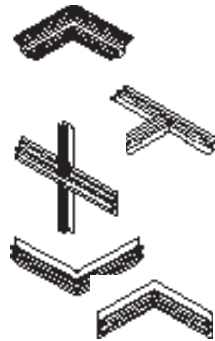
FRY REGLET RADIUSING



Fry Reglet's expertise in radiusing moldings permits designs which define and accentuate curved walls, arches over doorways and vaulted ceilings. Most shapes can be radiused but the amount of curvature is dependent on shape and the direction of the curvature.

Call 800/237-9773
for further information.

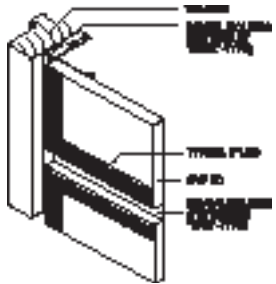
FRY REGLET FABRICATION



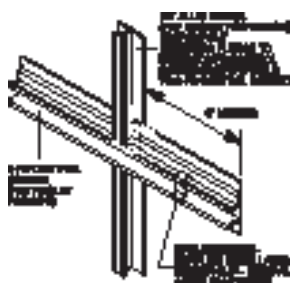
Factory fabricated intersections are available to speed installation and reduce labor cost. Intersections are available as shown as well as custom configurations and may be made up of the same or different shapes and either right angles or other angles. The joints are heliarc welded and the backs are sealed with permanent, waterproof tape. Six inch legs are provided to join with adjacent moldings.

FACTORY FABRICATED INTERSECTION EXAMPLES

DRM/DRMZ Intersection at Doorjamb



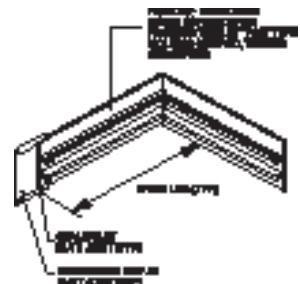
PCS/PCS 2-PC Intersection



FPM/PCS Window Sill Reveal



PCS Channel Reveal Inside Corner



PCS Channel Reveal Outside Corner



PCS Channel Reveal "+" Intersection



PCS Channel Reveal "T" Intersection



PCS Channel Reveal "L" Intersection

