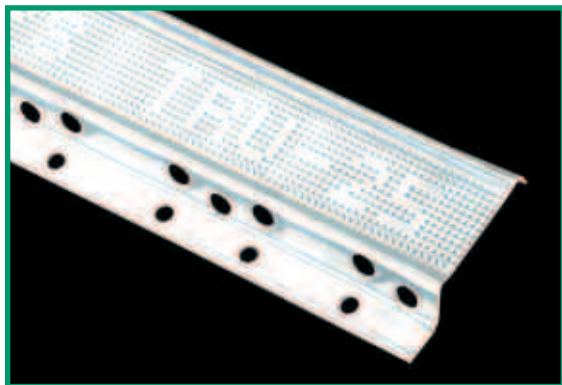
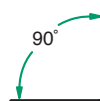
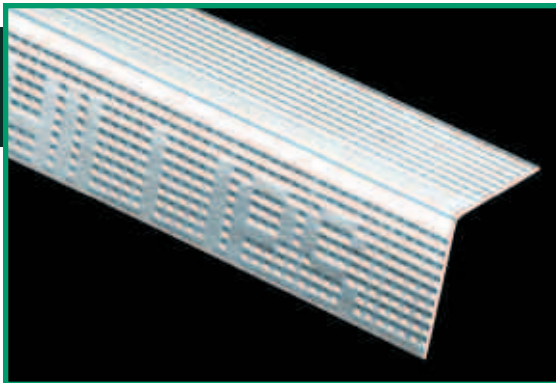


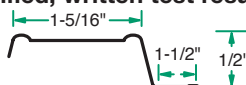
## KNURLED ANGLE RUNNER 90° (UTILITY ANGLE)

Phillips Knurled Angle Runner is a multi-purpose steel 90° angle ideal for bridging and backing around perimeters of ceiling, as a vertical attachment where gypsum partitions intersect with other surfaces, and other applications. This product is for caged beam construction and is used in place of studs and tracks in chase walls. Apply angles as floor and ceiling runners, plus dozens of other applications. Phillips offers this product in 25, 22, and 20 gauge steel for your convenience. The standard sizes are 1-1/2" x 1-1/2" and 2" x 2"; however, Phillips provides many other custom sizes to suit all needs. Packaging depends on your custom size, gauge, and length. Ask your sales representative for more information. Standard length is 10'. Also available in Weath-Ex® and CHD.



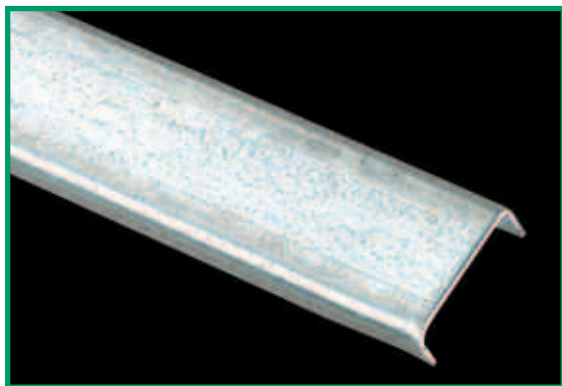
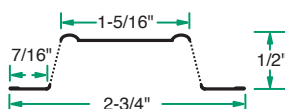
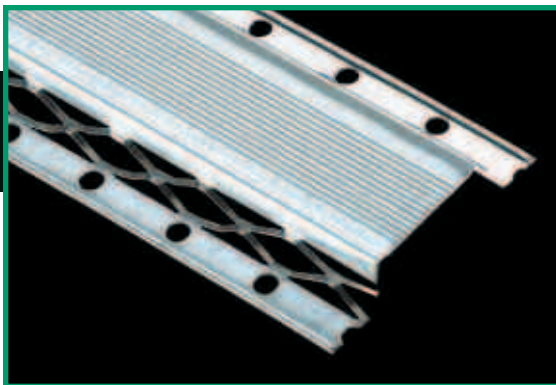
## RC-1 TRU 25° GAUGE RESILIENT SOUND CHANNEL

Phillips RC-1 is a resilient sound channel designed to decrease sound transmission through wall partitions and ceilings. Phillips RC-1 Tru 25° is manufactured to exacting specifications to minimize sound transmission. Phillips RC-1 works great to prevent ridging and cracking in ceilings. RC-1 is deeply knurled for positive screw location and to eliminate wandering. RC-1 is also available in Weath-EX®, CHD and Standard Duty. **Lab-certified, written test results are available upon request.**



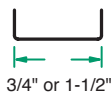
## RC-2 RESILIENT SOUND CHANNEL (DOUBLE LEG)

Phillips RC-2 resilient sound channel is used as cross furring members for resilient attachment of gypsum wallboard or lath on ceilings and partitions. RC-2 decreases sound transmission through wall partitions and ceilings. Channel depth is 1/2" and it is manufactured with 25 gauge galvanized steel. **Lab-certified, written test results are available upon request.**



## COLD ROLLED CHANNEL

Phillips Cold Rolled Channel is a superior channel used for furring walls, ceilings and laterally bracing studs. Also utilized for suspended ceilings and partition construction. Features tightly formed corners and consistent equal height legs to facilitate ease of installation. Phillips provides this product in both black and hot-dipped galvanized to suit all needs. Phillips Cold Rolled Channel is manufactured from 16 gauge steel and is available in 3/4" and 1-1/2".



### SIZES AND PACKAGING

#### COLD ROLLED CHANNEL

Length	Pieces Per Bundle	Bundles Per Pallet	Feet Per Bundle
10'	10	40	100
16'	10	40	160
20'	10	40	200

UPC labeling available upon request

### SIZES AND PACKAGING

#### RC-1 TRU 25°

Length	Pieces Per Bundle	Bundles Per Pallet	Feet Per Bundle
10'	20	50	200
12'	20	50	240

#### RC-2

Length	Pieces Per Bundle	Bundles Per Pallet	Feet Per Bundle
10'	40	42	400
12'	40	42	480

UPC labeling available upon request