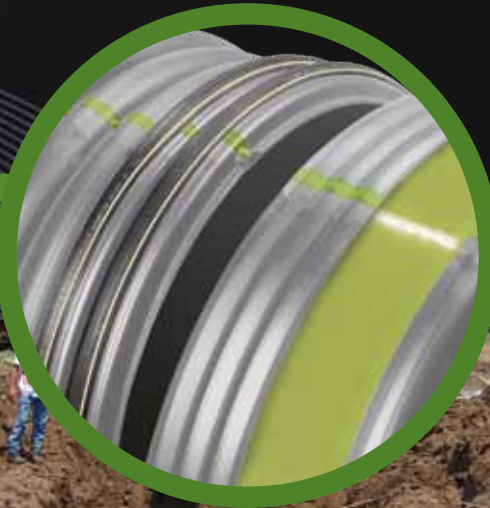


SaniTite® HP
HIGH PERFORMANCE

SaniTite® HP Sanitary Pipe 12"–30"



SANITITE® HP PIPE 12”-30” FOR SANITARY SEWER

Meets ASTM F2736

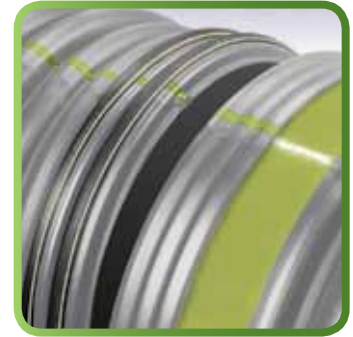
A new addition to our proven line of pipe products, SaniTite HP (High Performance) couples advanced Polypropylene resin technology with a proven, dual-wall profile design for superior performance and durability. This innovative new product meets or exceeds typical standards for pipe stiffness and joint integrity. When specifying pipe per ASTM F2736, on your next sanitary sewer project, you are specifying some of the most stringent performance requirements in the industry. These include measures for quality assurance, structural performance and design verification.

Advanced Dual Wall Profile Construction

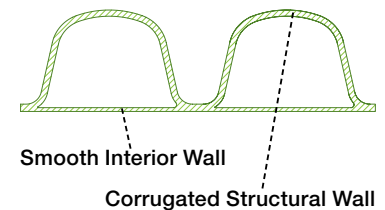
12”-30” diameter SaniTite HP pipe utilizes an enhanced dual wall construction, providing increased pipe stiffness, which meets or exceeds the industry standard of 46 pii. The additional stiffness and beam strength enhances jobsite performance in stringent line and grade requirements. The pipe profile is completed with a smooth interior which provides additional strength and excellent flow characteristics.

Superior Polypropylene Material

Made from an engineered impact modified co-polymer compound, the superior strength and material properties of polypropylene (PP) offer robust pipe stiffness, excellent handling characteristics, and long service life when compared to traditional sanitary sewer products. It is chemically resistant to hydrogen sulfide gas and sulfuric acid concentrations typical of sanitary sewers to provide superior durability and performance. The unique light grey resin color provides immediate jobsite recognition as well as improving the pipe’s interior visibility during post-installation inspection.



Dual Wall Design



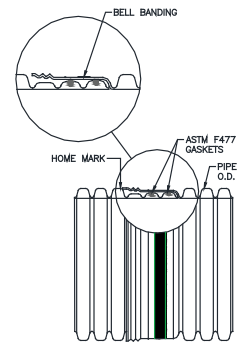
Polypropylene Resin



Interior View

Superior Joint Performance

SaniTite HP pipe has a patented extended, reinforced bell with a polymer composite band and dual gaskets that add an additional factor of safety within each joint. The SaniTite HP joint performance meets or exceeds the 10.8 psi laboratory performance standards per ASTM D3212 requirements. Third party certification of joint performance is available upon request.



In the field, each section of SaniTite HP may be tested by a low pressure air test, according to ASTM F1417. ASTM F1417 is a commonly used standard and specifies that 3.5 psi air pressure be held for a specified length of time based upon pipe diameter and length of run.

Where an infiltration/exfiltration test is preferred, ASTM F2487 specifies a simplistic method of verifying proper joint performance.

Diameter Range

SaniTite HP meeting ASTM F2736 is currently manufactured in the 12"–30" size range and in 20 or 13 foot lengths. The 20 foot lengths aid in speed of installation and reduce the total number of joints. However, the 13 foot lengths are complimentary for deeper projects where trench box conditions require a shorter pipe.

DIAMETER	DIAMETER RANGE						
	PRODUCT #	PROFILE TYPE	LENGTH	ID	OD	TRUCKLOAD FOOTAGE	
12"	1230 0020 IBPP	Dual Wall	20'	12.1	14.5	2400'	
12"	1230 0013 IBPP	Dual Wall	13'	12.1	14.5	2184'	
15"	1530 0020 IBPP	Dual Wall	20'	14.9	17.6	1600'	
15"	1530 0013 IBPP	Dual Wall	13'	14.9	17.6	1430'	
18"	1830 0020 IBPP	Dual Wall	20'	18.0	21.2	1120'	
18"	1830 0013 IBPP	Dual Wall	13'	18.0	21.2	988'	
24"	2430 0020 IBPP	Dual Wall	20'	24.1	28.0	600'	
24"	2430 0013 IBPP	Dual Wall	13'	24.1	28.0	546'	
30"	3030 0020 IBPP	Dual Wall	20'	30.1	35.4	360'	
30"	3030 0013 IBPP	Dual Wall	13'	30.1	35.4	299'	

Fittings

Both standard and custom fittings are available for the SaniTite HP product line. A complete line of standard Nyloplast PVC molded fittings are available in the 12"–30" mainline sizes. Standard branch laterals are designed to accept SDR-35 or SDR-26 pipe.

Additional fittings options are available for the SaniTite HP product line and are manufactured from pipe meeting ASTM F2736.



Bell/Spigot Joint Connection



Spigot Insertion to Home Mark



Fittings Available in PVC or PP

Tap Connections

A standard tapping product, such as Inserta Tee®, is compatible with SaniTite HP.

Repair Couplers

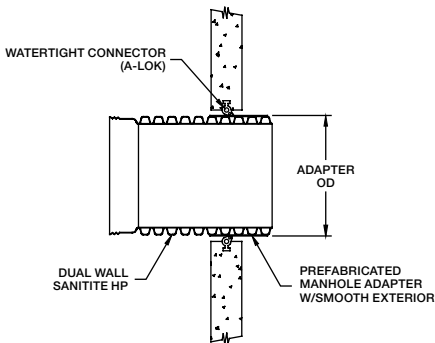
Testable repair couplers are also available and include stainless steel restraint bands.

12"–30" Dual Wall Structure Connections

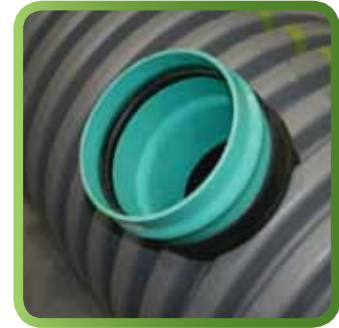
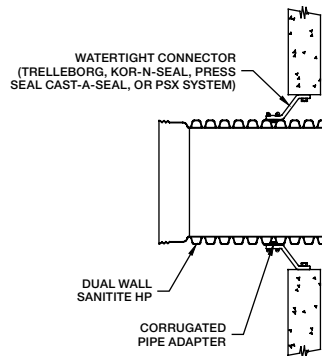
Sanitary sewer projects require superior watertight performance combined with a flexible connection solution that can withstand the rigors of installation. To meet varying regional requirements, ADS offers a wide selection of connection options utilizing some of the most widely used manhole connectors on the market today from companies such as A-Lok®, NPC® and Press Seal® Gasket Corporation.

When connecting dual wall corrugated SaniTite HP pipe to a manhole, a smooth exterior surface on the pipe is typically required. ADS offers three ways to adapt to these manholes connectors: a corrugated pipe adapter, PVC Manhole Adapter or a fabricated fitting with a smooth wall cylinder welded to the exterior, available through ADS.

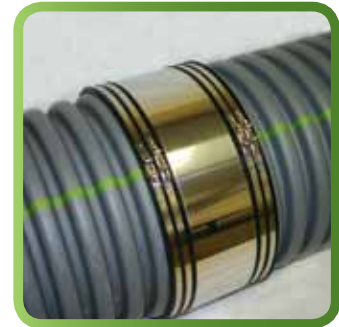
Pre-Cast Compression Gasket Connection



Flexible Boot Connection



Typical Inserta Tee Tap



Repair Coupler

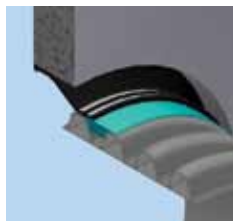


Manhole Boot Connection with Corrugated Pipe Adapter



Manhole Adapter Available in PVC or PP

PIPE DIAMETER	CORRUGATED PIPE ADAPTER PRODUCT CODE
12"	1250PS
15"	1550PS
18"	1850PS
24"	2450PS
30"	3050PS



ADS SANITITE® HP 12”-30” SANITARY PIPE SPECIFICATION

SCOPE

This specification describes 12- through 30-inch (300 to 750 mm) ADS SaniTite HP pipe for use in gravity-flow sanitary sewer applications.

PIPE REQUIREMENTS

ADS 12”-30” (300 to 750mm) SaniTite HP pipe shall have a smooth interior and annular exterior corrugations.

- 12- through 30-inch (300 to 750 mm) pipe shall meet ASTM F2736
- 12- through 30-inch (300 to 750 mm) pipe shall have a minimum pipe stiffness of 46 pii when tested in accordance with ASTM D2412.
- Manning’s “n” value for use in design shall be 0.012.

JOINT PERFORMANCE

Pipe shall be joined with a gasketed integral bell & spigot joint meeting the requirements of ASTM F2736.

12- through 30-inch (300 to 750 mm) shall be watertight according to the requirements of ASTM D3212. Spigot shall have two gaskets meeting the requirements of ASTM F477. Gaskets shall be installed by the pipe manufacturer and covered with a removable, protective wrap to ensure the gaskets are free from debris. A joint lubricant available from the manufacturer shall be used on the gasket and bell during assembly.

12- through 30-inch (300 to 750 mm) diameters shall have a reinforced bell with a polymer composite band installed by the manufacturer.

FITTINGS

Fittings shall conform to ASTM F2736. Bell & spigot connections shall utilize a spun-on, welded or integral bell and spigot with gaskets meeting ASTM F477. Fitting joints shall meet the watertight joint performance requirements of ASTM D3212.

FIELD PIPE AND JOINT PERFORMANCE

To assure watertightness, field performance verification may be accomplished by testing in accordance with ASTM F1417 or ASTM F2487. Appropriate safety precautions must be used when field-testing any pipe material. Contact the manufacturer for recommended leakage rates.

MATERIAL PROPERTIES

Polypropylene compound for pipe and fitting production shall be an impact modified copolymer meeting the material requirements of ASTM F2736, Section 4.

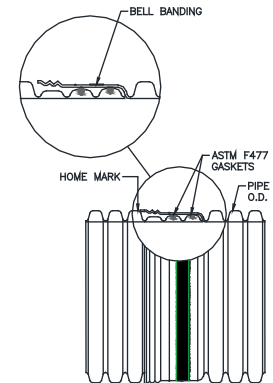
INSTALLATION

Installation shall be in accordance with ASTM D2321 and ADS recommended installation guidelines, with the exception that minimum cover in traffic areas for 12- through 30-inch (300 to 750 mm) diameters shall be one foot (0.3 m) in single run applications. Backfill for minimum cover situations shall consist of Class 1 or Class 2 (minimum 90% SPD) material. Maximum fill heights depend on embedment material and compaction level; please refer to Technical Note 2.05. Contact your local ADS representative or visit our website at www.ads-pipe.com for a copy of the latest installation guidelines.

PIPE DIMENSIONS

Nominal Diameter in. (mm)	12 (300)	15 (375)	18 (450)	24 (600)	30 (750)
Pipe I.D. in. (mm)	12.1 (307)	14.9 (378)	18.0 (457)	24.1 (612)	30.1 (765)
Pipe O.D. in. (mm)	14.5 (368)	17.6 (447)	21.2 (538)	28.0 (711)	35.4 (899)
Minimum Pipe Stiffness at 5% Deflection* #/in./in. (kN/m ²)	75 (520)	60 (411)	56 (385)	50 (343)	46 (320)

*Minimum pipe stiffness values listed; contact a representative for maximum values.



(Check with a sales representative for regional product configuration.)

ADS "Terms and Conditions of Sale" are available on the ADS website, www.ads-pipe.com
The ADS logo, the Green Stripe and SaniTite® HP are registered trademarks of Advanced Drainage Systems, Inc.
Inserta Tee® is a registered trademark of Inserta Fittings, Co. A-Lok® is a registered trademark of A-Lok Products, Inc. NPC®
is a registered trademark of Trelleborg Pipe Seals Milford, Inc. Press Seal® Gasket Corporation is a registered trademark of
Press Seal Gasket Corporation. Mar Mac® is a registered trademark of Mar Mac Construction Products, Inc. Nyloplast® is a
registered trademark of Nyloplast.
© 2011 Advanced Drainage Systems, Inc.
BRO #10668 01/12 MH



Advanced Drainage Systems, Inc.
4640 Trueman Blvd. Hilliard, OH 43026
1-800-821-6710
www.ads-pipe.com

