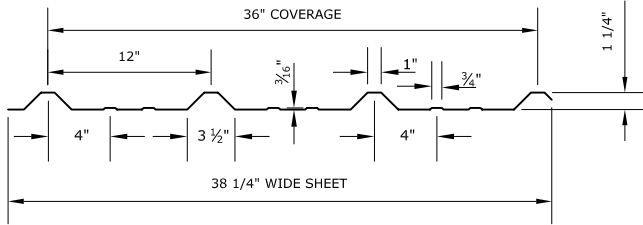


PBR-PANEL



PBR-PANEL PROFILE

Standard Width(s)- 38 1/4" (36" Coverage)

Applications

PBR-panel is an exposed fastener panel with 36" coverage. It can be used on roof or wall applications. The PBR has a "purlin bearing" leg which helps insure the panel laps properly and the lap fasteners make the tightest possible compression seal in the panel side lap.

Substrates

Purlins-Joists-Hat Channels-Deck

Standard Materials

Alum-Zinc coated steel

Standard Gauge

24 ga. 26 ga.

Finishes

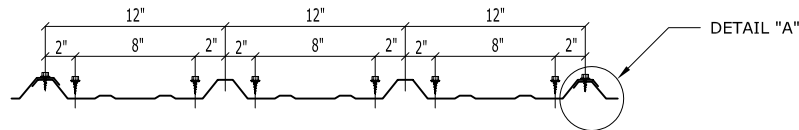
Acrylic Coated Galvalume and Fluoropolymer (Kynar 500)

Texture

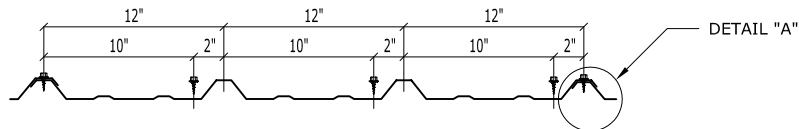
Smooth

Manufacturing

Factory

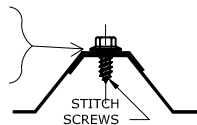


PANEL FASTENER LOCATIONS @ PANEL ENDS



PANEL FASTENER LOCATIONS @ MIDDLE OF PANEL

SIDE LAP FASTENERS ARE REQUIRED.
TYPICAL SPACING IS 20" O.C...
MINIMUM 1/2" X 3/8" TAPE SEALANT
IN PANEL SIDE LAPS.



DETAIL "A"