

ARTEFFECTS®

EXCELON® Stonetex®



linoleum ■ luxury vinyl tile ■ commercial hardwood ■ sheet ■ **vct** ■ specialty flooring ■ accessories

[Between us, ideas become reality.]®

COMMERCIAL **FLOORING**

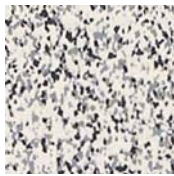


VCT
Premium

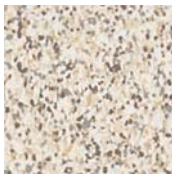


ARTEFFECTS®

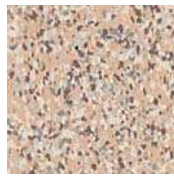
- Fresh, earth-based colors, tinted neutrals and tonal steps provide an array of patterning options and integrate easily with other commercial finishes.
- Visual portrays the textural dimension and softness of carpet with maintenance benefits of vinyl.
- The nondirectional pattern design conveys a seamless, sheet-like appearance with the easy installation and replacement advantages of tile.
- FloorScore™ certified in compliance with indoor air quality emissions requirements.



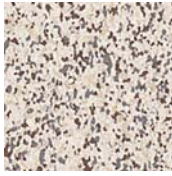
57215
zinc white



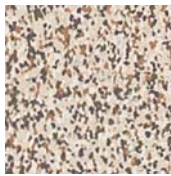
57200
parchment beige



57204
pissarro cream



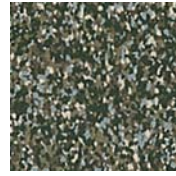
57202
canvas beige



57203
pastel beige



57205
silver sable



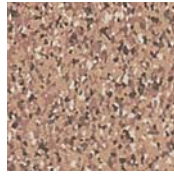
57211
mezzo green



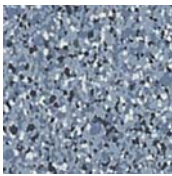
57216
intaglio gray



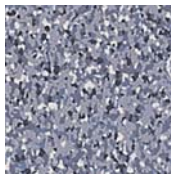
57201
silverpoint



57206
fresco red



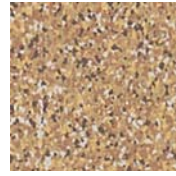
57208
saxon blue



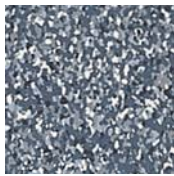
57218
violet glaze



57210
umber green



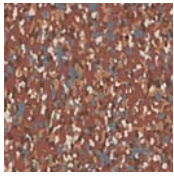
57217
antique papyrus



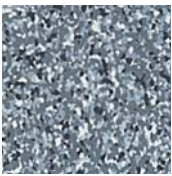
57214
paris blue



57213
charcoal stick



57207
roman red



57209
water garden
blue

NOTE: Darker-colored patterns may be susceptible to scratch whitening. These colors may require more frequent maintenance if used in field areas: 52144, 52147, 52148, 52149, 52150, 52151, 52152, 52153, 52154, 52157, 57207, 57211, 57213.

DID YOU KNOW...



Our VCT is composed of 85% limestone, an abundant natural resource. Using Armstrong™ VCT contributes to LEED credits. Our plants are located near major U.S. population centers. Call your sales representative or 1 877 ARMSTRONG to see how your VCT selection qualifies for the Recycled Content 4.1 Credit and Regional Materials Credit 5.1 or 5.2 under the Materials & Resources section of LEED and for the Low Emitting Materials Credit 4.3 under the Indoor Environmental Quality section of LEED.





EXCELON® Stonetex®

- An Armstrong original design, Stonetex offers proven EXCELON durability, value and quality with a granite-like visual and organic colors in a true nondirectional tile.
- The nondirectional pattern has a more upscale look than base-grade VCT, as well as stonelike accents for an architectural look.
- The naturally inspired design comes in 25 neutral-to-bold solid colors.
- Stonetex is a true through-pattern product with consistent color and design that will last the lifetime of the floor.



52140
chalk white



52144
coal black



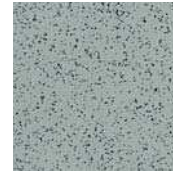
52127
stone white



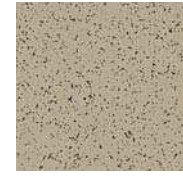
52139
limestone beige



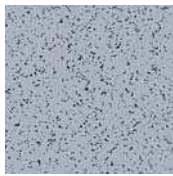
52158
neutral peach



52142
slate green



52132
dusty khaki



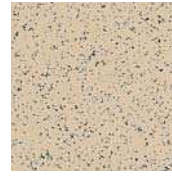
52141
flagstone blue



52126
gravel blue



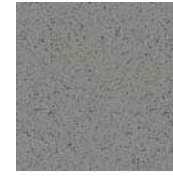
52128
desert dust



52143
sandstone tan



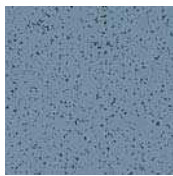
52151
terra stone



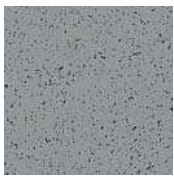
52153
warm green



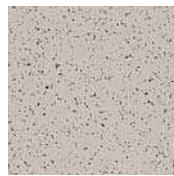
52155
forest moss



52135
mineral dust



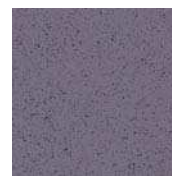
52125
granite gray



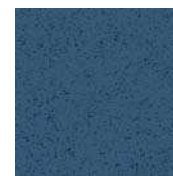
52122
pebble gray



52156
bamboo yellow



52150
peat gray



52152
blue ash



52154
leaf green



52148
blue spruce



52147
pumice stone



52149
cocoa brown



52157
clay red



Specification Data

ARTEFFECTS® ■ EXCELON® Stonetex®

ARMSTRONG FLOOR PRODUCTS

Armstrong World Industries, Inc.
P.O. Box 3001
Lancaster, PA 17604 U.S.A.

Armstrong World Industries Canada Ltd.
6911 Decarie Blvd.
Montreal, Quebec H3W 3E5 Canada

1. PRODUCT NAME

Armstrong Vinyl Composition Tile
■ ARTEFFECTS
■ EXCELON Stonetex

2. PRODUCT DESCRIPTION

Material
A composition of polyvinyl chloride resin, plasticizers, stabilizers, fillers and pigments.

Construction and Colors

Color and pattern detail are dispersed uniformly throughout the thickness of the material. Color pigments are insoluble in water and resistant to cleaning agents and light.

Size

12 in. x 12 in. (305 mm x 305 mm) tile

Gauge (nominal thickness)

1/8" (3.2 mm)

Limitations

These products should **not** be used in the following areas:

- Hospital operating rooms.
- Heavy industrial and exterior areas.
- Commercial kitchens and commercial food processing areas.
- Where pointed spikes such as golf or track shoes will be used.
- Where the floor will be subjected to unusually concentrated static or dynamic loads.

NOTE: Concentrated static and dynamic loads such as hospital beds, roll-out bleachers, portable x-ray machines, etc., may visibly damage resilient as well as other types of floor coverings. For questions regarding product suitability and detailed instructions for floor preparation and installation in these applications, please contact Armstrong.

Suitable for Application Over

- Concrete, terrazzo, and other dry, structurally sound monolithic subfloors, which are suspended, on grade or below grade.
- Suspended wood subfloor construction with approved wood underlayments, and a minimum of 18 in. (45.7 cm) well-ventilated air space below.
- Most metal floors and most existing single-layer resilient floors on approved underlayments.
- Radiant-heated subfloors with a maximum surface temperature of 85° F (29° C).

Unsuitable for Application Over

- Subfloors where excessive moisture or alkali is present.
- Sleeper-constructed wood subfloors, on grade or below grade.
- Lightweight aggregate concrete subfloors having a density of less than 90 lbs. per cu. ft. (1441 kg/m³) or cellular concrete having a plastic (wet) density less than 100 lbs. per cu. ft. (1602 kg/m³) [94 lbs. per cu. ft. (1506 kg/m³) dry weight], or concrete having a compressive strength of less than 3500 psi (24 MPa). Concrete slabs with heavy static and/or dynamic loads should have higher design strengths and densities calculated to accommodate such loads.

Concrete curing agents, sealers, hardeners, or parting agents should be removed.

3. TECHNICAL DATA

Shipping Weight

63 lbs./carton (29 kg)

Packaging

Tiles per carton – 45, 45 sq. ft.

Gloss (typical value)

60 degrees specular: 20 - 40

Reference Specifications

ARTEFFECTS: ASTM F 1066, Class 3 – surface pattern
Stonetex: ASTM F 1066, Class 2 – through pattern

Static Load Limit

ASTM F 970
125 lbs./sq. in. (8.8 kg/cm²)

NOTE: Floors should be protected from sharp-point loads and heavy static loads. High-heeled traffic [1000 psi (70.3 kg/cm²) or more] may visibly damage wood, resilient and other floor coverings.

Comparative Subjective Property Ratings

Durability – Good (ARTEFFECTS)
Very Good (Stonetex)

Maintainability – Good

Resilience – Good

Subjective ratings (excellent, very good, good, fair) are in relation to other Armstrong commercial resilient floors. Ratings are not directly related to any one test. They are broadly based on tests and experience of Armstrong Research and Development under varying conditions and circumstances. These ratings should not be used for comparison to ratings used by other manufacturers to rank their own products.

Fire Test Data

ASTM E 648 Flooring Radiant Panel Critical Radiant Flux – 0.45 watts/cm² or more – Class I

ASTM E 662 Smoke Chamber Specific Optical Smoke Density – 450 or less

Numerical flammability ratings alone may not define the performance of the product under actual fire conditions. These ratings are provided only for use in the selection of products to meet the specified limits.

4. INSTALLATION

Job Conditions

Subfloors/underlayments shall be dry, clean, and smooth. They shall be free from paint, varnish, solvents, wax, oil, existing adhesive residue, or other foreign matter.

For more detailed requirements of concrete, wood and metal subfloors, as well as wood and trowelable underlayments, refer to Armstrong Guaranteed Installation Systems manual, F-5061. Calcium Chloride Tests for moisture must be conducted. Armstrong offers a guideline of a maximum acceptable moisture emission level of 5.0 lbs. per 1000 sq. ft. per 24 hours. Bond Tests should also be conducted for compatibility with the substrate. When testing for alkalinity, the allowable readings for the installation of Armstrong flooring are 5 to 9 on the pH scale.

Temperature shall be maintained at a minimum of 65° F (18° C) and a maximum of 100° F (38° C) for 48 hours prior to installation, during installation and 48 hours after completion. A minimum temperature of 55° F (13° C) shall be maintained thereafter. Condition all flooring materials and adhesives to room temperature at least 48 hours prior to starting installation. Protect all materials from the direct flow of heat from hot-air registers, radiators, or other heating fixtures and appliances.

Procedure

These products should be installed with the following adhesives:

Subfloor	Wood Underlayment	Concrete	Ceramic, Marble, Terrazzo	Metal	Existing Resilient Floor
Adhesive	S-515 S-700 S-750	S-89 S-515 S-700 S-750	S-89 S-515 S-700 S-750	S-89* S-700	S-515 S-750 Tile-On™

*S-89 may only be used over steel, stainless steel, aluminum and lead.

NOTE: Stonetex has a nondirectional pattern; directional arrows are printed on the back of each tile as an aid to installation. Install each Stonetex tile with the arrows pointing in the same direction to assure a nondirectional look.

Install each ARTEFFECTS tile with the arrows pointing in the same direction for a nondirectional look. Detailed instructions may be found in the ARTEFFECTS Installation/Maintenance Tip Sheet, F-7291.

Detailed instructions may be found in the Armstrong Guaranteed Installation Systems manual, F-5061.

5. MAINTENANCE

These products are designed to be maintained by traditional resilient flooring maintenance methods, which include the use of polishes, spray-buffing techniques and appropriate high-speed maintenance systems.

Initial Maintenance Immediately After Installation

- Sweep or vacuum thoroughly.
- Damp mop with a dilute neutral detergent solution such as Armstrong S-485 Floor Cleaner – carefully wiping up black marks and excessive soil.
- Apply two coats of high quality commercial floor polish such as Armstrong S-480.
- Do not wash, scrub or strip the floor for at least four to five days after installation.

Preparation for Commercial Use

For specific, ongoing maintenance procedures see Armstrong Maintenance Recommendations & Procedures for Commercial Resilient Flooring booklet, F-8663.

6. WARRANTIES

Armstrong warrants its regular (first quality) commercial floors and wall base to be free from manufacturing defects and warrants the installation integrity for five years from the date of purchase, if installed according to the Armstrong Guaranteed Installation Systems manual, F-5061. This warranty extends only to the original end-user. See Armstrong Commercial Floor Warranty, F-3349 or visit armstrong.com for warranty details, limitations and exclusions.

WARNING

EXISTING IN-PLACE RESILIENT FLOOR COVERING AND ASPHALTIC ADHESIVES. DO NOT SAND, DRY SWEEP, DRY SCRAPE, DRILL, SAW, BEADBLAST, OR MECHANICALLY CHIP OR PULVERIZE EXISTING RESILIENT FLOORING, BACKING, LINING FELT, ASPHALTIC "CUTBACK" ADHESIVE, OR OTHER ADHESIVE.

These existing in-place products may contain asbestos fibers and/or crystalline silica.

Avoid creating dust. Inhalation of such dust is a cancer and respiratory tract hazard.

Smoking by individuals exposed to asbestos fibers greatly increases the risk of serious bodily harm.

Unless positively certain that the existing in-place product is a non-asbestos-containing material, you must presume it contains asbestos. Regulations may require that the material be tested to determine asbestos content and may govern removal and disposal of material.

See current edition of the Resilient Floor Covering Institute (RFCI) publication Recommended Work Practices for Removal of Resilient Floor Coverings for instructions on removing all resilient floor covering structures or contact your retailer or Armstrong World Industries, Inc. 1 800 233 3823.

The floor covering or adhesive in this package does NOT contain asbestos.

The knowledge and technical support you need to bring your vision to life.

Visit armstrong.com/flooring

Call 1 877 ARMSTRONG (276 7876)

TechLine Flooring Expert: options 2, 3 and 3

Armstrong Flooring Representative: options 2 and 2

Samples: Visit armstrong.com/flooring

Call 1 877 276 7876, options 2 and 1



For more information, visit www.armstrong.com/floorscore

Printed in United States of America
© 2006 AWI Licensing Company
FloorScore is a trademark of Resilient Floor Covering Institute. All other trademarks owned by AWI Licensing Company

The Armstrong logo and EXCELON® are registered in the United States and Canada.

ARTEFFECTS®, [Between us, ideas become reality.]® and Stonetex® are registered in the United States only.

F-7292-1206

[Between us, ideas become reality.]®

COMMERCIAL FLOORING