

Linoleum with   
NATURCote<sup>™</sup>

MARMORETTE<sup>™</sup>  
LINORETTE<sup>™</sup> ■ COLORETTE<sup>™</sup>  
UNI WALTON<sup>™</sup> ■ GRANETTE<sup>™</sup>



linoleum ■ biobased tile<sup>®</sup> ■ lvt ■ commercial hardwood ■ sheet ■ vct ■ specialty flooring ■ accessories



LINOLEUM

# Linoleum with NATURCote™



Armstrong® linoleum now combines the timeless beauty of our most sustainable product along with the superior performance of our exclusive NATURCote™ low-maintenance coating. It's the best of all worlds with an expanded line of 5 designs and 126 colors all designed in a simple organized tonal step system that unites hue, value and chroma.

## Unsurpassed Color

Color Continuum™ is a new flexible range of color options that provides a progression of color to optimize product selections across our linoleum line as well as the entire portfolio of commercial products.

- MARMORETTE™ – Timeless standard of design
- LINORETTE™ – Classic modern design
- COLORETTE™ – Fresh uncomplicated colors
- GRANETTE™ – New nature inspired colors
- UNI WALTON™ – Clean and sophisticated visual

## Superior Performance

Exclusive NATURCote low-maintenance coating

- Non-strippable
- Dirt resistant
- Resists discoloration from high pH cleaners
- Improves scuff resistance
- Reduces damage from scratching
- Reduces environmental impact by reducing water, chemicals and labor needed for routine maintenance

## Natural Sustainability

- Made from renewable raw materials
- Recycled content
- LEED® compliant with EQ4.3 and contributes to MR4.0 and MR6.0
- FloorScore™ certified
- EcoScorecard™ – web-based tool that provides LEED documentation in just a few minutes

**ecoscorecard™**

[armstrong.com/environment](http://armstrong.com/environment)



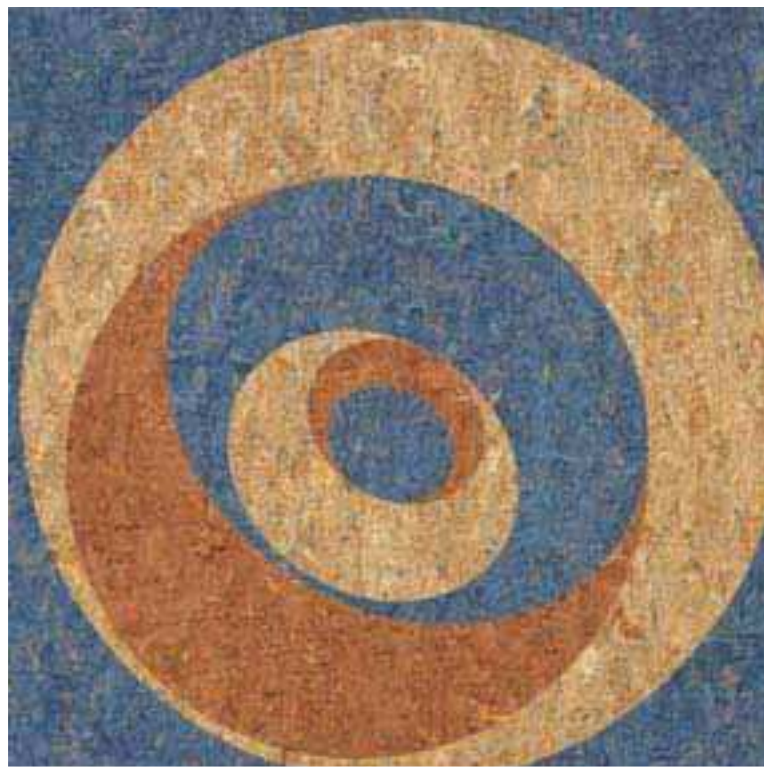
THE JAY GROUP  
MARMORETTE™ LP059 charcoal gray,  
LP096 obsidian, LP530 tree frog



## Inspiring Choices Since 1909

MARMORETTE™, LINORETTE™, COLORETTE™, GRANETTE™ AND UNI WALTON™ have come together as a collection of inspiring choices. Our line of linoleum has expanded by more than 50%, offering timeless beauty in a high-performance sustainable floor.

So whether it's soft nature inspired colors for health care interiors, sophisticated combinations for education and office environments or pop and sizzle for a retail space, Armstrong® linoleum with NATURCote™ has a design and color for every idea you can create.



### LINORETTE

Classic modern design in a full spectrum of 12 saturated colors

- LP402 brisbane blue
- LP403 gobi sand
- LP460 grand canyon

### MARMORETTE

Timeless standard of design with 67 tonal step options

- LP092 sand
- LP507 under the boardwalk
- LP552 stone white
- LP553 smoke
- LP554 smolder





**GRANETTE™**

New nature inspired visual in  
18 colors that blend seamlessly  
with natural elements

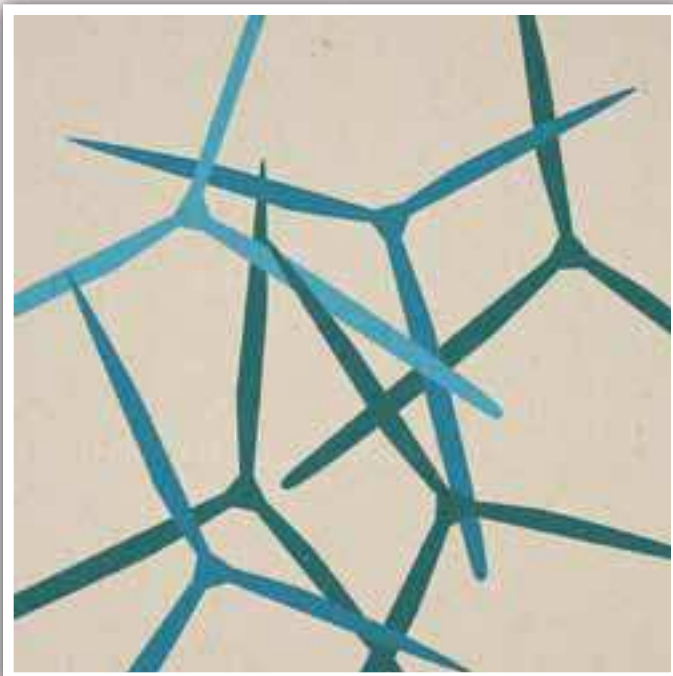
- LP170 pollen
- LP171 bees knees



**UNI WALTON™**

Clean and sophisticated visual with  
9 colors that can add drama to a space  
or just add definition to a design

- LP208 night blue
- LP236 moss
- LP259 white



**COLORETTE™**

20 fresh uncomplicated colors

- LP305 deep end
- LP308 scuba
- LP321 shallow end
- LP382 lighten up



Linoleum is not just another beautiful flooring option, its composition of natural ingredients and saturated pigments combine with our exclusive NATURCote™ high-performance coating to enhance and protect the surface.

**Preserves Linoleum’s Natural Beauty**

- Resists dirt build up
- Improves scuff resistance
- Reduces damage from scratching

**Increases Resistance to Chemicals and Discoloration**

- Protects against damage from chemical spills
- Resists discoloration from high pH cleaners and other harsh chemicals

**Less Environmental Impact Created by Low Maintenance Coating**

- Eliminates the need for initial polish if floors are undamaged during installation
- Reduces time, chemicals and labor needed for routine maintenance
- Less maintenance, chemicals, and water needed to clean floors day-to-day

**Exclusive Adhesive Seaming System Saves Installation Time and Costs**

- Armstrong’s exclusive S-761 seam adhesive is faster and more economical than heat-welded seams
- Creates seamless visual

**Sustainable Flooring Solution**

- Natural renewable raw ingredients
- Recycled content
- LEED® compliant with EQ4.3 and contributes to MR4.0 and MR6.0
- FloorScore™ - certified for low VOC emissions

**Seaming Recommendations**

Low maintenance spray buff method	Floors that keep their good looks easily
Reduced labor	Less time
Less maintenance materials used over time	Fewer chemicals to buy, store, mix and apply
Uses less water and cleaning agents inside the facility	Reduced disposal into waste water system



MARMORETTE™ with NATURCote



Competitive product with a topcoat



NATURCote resists “yellowing” from maintenance accidents better than competitive linoleum protected with a topcoat



S-761 Seam Adhesive



Heat-Welded Seams

**Low Maintenance Advantages**

Space	Full Spread S-760 with S-761
Aseptic areas	Not recommended
Medium to heavy commercial traffic	Recommended
Light to medium commercial traffic	Recommended
Heavy static and dynamic load areas	Optional
Heavy industrial areas	Not recommended

For complete seaming installation recommendations, visit [armstrong.com/linoleum](http://armstrong.com/linoleum).



Huguley Memorial Medical Center  
MARMORETTE™ LP089 lava,  
LP090 pumice gray, LP091 mushroom

Visit [armstrong.com/linoleum](http://armstrong.com/linoleum) • Call 1 877 ARMSTRONG

Color Continuum™ is a simplified and organized tonal step color system that unites hue, value and chroma to help save time when specifying. Built upon 100 years of trusted linoleum experience, our floors are naturally sustainable; LEED® documentation only requires a few minutes when using our web-based ecoScorecard<sup>SM</sup>.

Armstrong® linoleum with NATURCote™ – the first choice for superior beauty and performance in linoleum.



Beautifully sustainable flooring backed by 100 years of linoleum heritage.

*First National Advertisement, Saturday Evening Post – 1917*



# UNI WALTON™

WELD ROD: W1\_\_

LP259  
white



W1059

LP207  
mustard



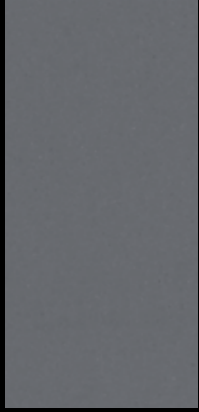
W1007

LP208  
night blue



W1008

LP282  
gray



W1003

LP210  
orange red



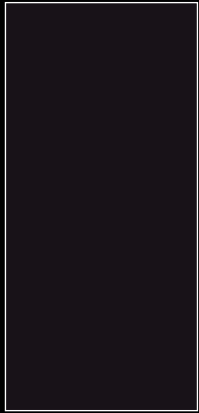
W1510

LP230  
dark green



W1231

LP280  
black



W1280

LP260  
warm brown



W1060

LP236  
moss



W1001

**MARMORETTE™**

WELD ROD: W1\_\_

LP553  
smoke



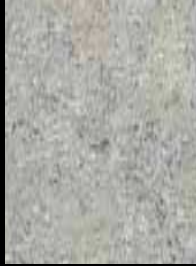
W1253

LP552  
stone white



W1252

LP053  
gull gray



W1356

LP050  
silver gray



W1250

LP059  
charcoal gray



W1380

LP555  
constellation



W1255

LP556  
atmosphere



W1258

LP557  
nebula



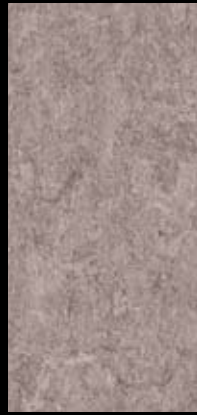
W1207

LP091  
mushroom



W1791

LP090  
pumice gray



W1790

LP089  
lava



W1789

LP092  
sand



W1792

LP506  
the boardwalk



W1287

LP507  
under the boardwalk



W1285

LP045  
parchment beige



W1245

LP546  
barefoot



W1271

LP003  
cocoa brown



W1703

LP084  
hide



W1784

LP040  
cream



W1270

LP076  
yellow straw



W1276

LP098  
fool's gold



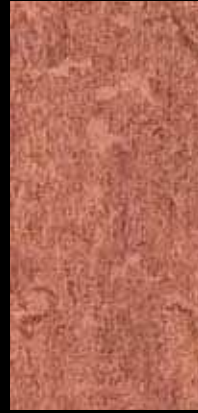
W1798

LP575  
melon head



W1275

LP510  
not so innocent



W1204

LP065  
light chocolate



W1240

LP070  
bamboo tan



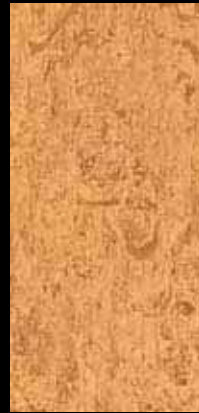
W1070

LP072  
goldenrod



W1272

LP571  
summer morning



W1274

LP519  
blast off



W1219

LP008  
aztec red



W1708

LP509  
summer camp



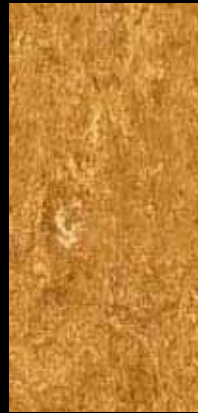
W1289

LP066  
oak brown



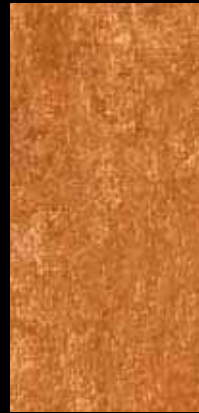
W1262

LP570  
gold digger



W1283

LP573  
meltdown



W1273

LP515  
pop rocket



W1205

LP511  
brick house



W1242

LP516  
miss behavin'



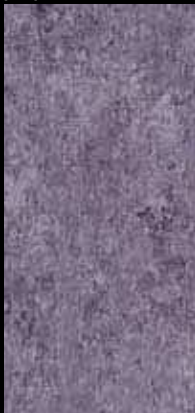
W1238

LP512  
slightly frivolous



W1201

LP522  
purple mountains



W1288

LP547  
summer lovin' blue



W1281

LP521  
pale blue eyes



W1220

LP524  
cookie monster



W1206

LP048  
firebird red



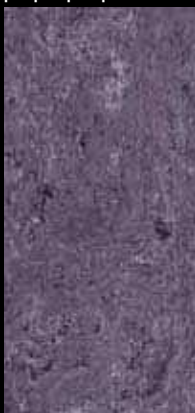
W1510

LP513  
amped up



W1202

LP523  
purple people eater



W1286

LP049  
bluebird



W1249

LP023  
serene blue



W1223

LP026  
delft blue



W1224

LP018  
cherry red



W1718

LP514  
dandy



W1203

LP528  
it's magic



W1284

LP548  
stars at night



W1282

LP022  
caspien blue



W1222

LP525  
hey sailor



W1208

LP526  
ocean breeze



W1215

LP007  
blue wave



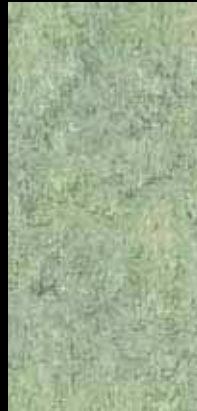
W1707

LP020  
sweet grass



W1720

LP530  
tree frog



W1256

LP068  
blue spa



W1768

LP099  
tidal blue



W1799

LP543  
home turf



W1032

LP000  
parrot green



W1711

LP527  
twilight



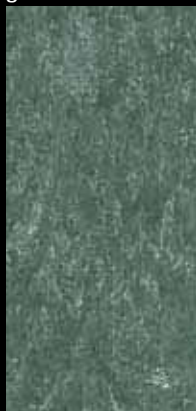
W1246

LP532  
new wave



W1232

LP544  
green horn



W1237

LP531  
tree hugger



W1266

### Width/Length

6 ft. 7 in. (2.0 m) wide,  
up to 98.4 ft. (30 m) long

### Gauge

MARMORETTE™  
0.080 in. (2.0 mm)\*

MARMORETTE, GRANETTE™  
UNI WALTON™, LINORETTE™, COLORETTE™  
0.100 in. (2.5 mm)

MARMORETTE, GRANETTE,  
UNI WALTON, COLORETTE  
0.125 in. (3.2 mm)\*

\* Lead time and minimum order  
quantities vary. Please contact  
your Armstrong representative.

### Approximate Installed Cost

MARMORETTE, GRANETTE  
US

\$4.50 – \$5.00 sq. ft.

Canada

C\$4.00 – C\$4.50 sq. ft.

COLORETTE

US

\$4.50 – \$5.00 sq. ft.

Canada

C\$4.00 – C\$4.50 sq. ft.

LINORETTE

US

\$4.50 – \$5.00 sq. ft.

Canada

C\$3.75 – C\$4.25 sq. ft.

UNI WALTON

US

\$5.00 – \$5.50 sq. ft.

Canada

C\$5.00 – C\$5.50 sq. ft.

Cost is based on 0.100 in. thickness

### Environmental

FloorScore™ certified

LEED® NC Eligible:

EQ4.3, MR4.0, MR6.0

Before making your color selection, expose  
linoleum samples to sunlight for at least four hours  
to remove the yellow cast that occurs naturally  
as part of the linoleum production process.

**COLORETTE™**

WELD ROD: W1\_\_



W1301



W1320



W1325



W1360



W1359



W1350



W1371



W1309



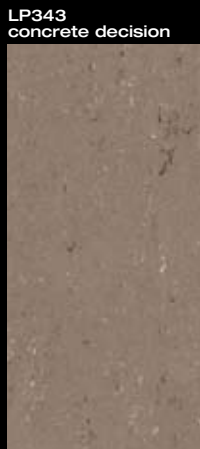
W1323



W1303



W1321



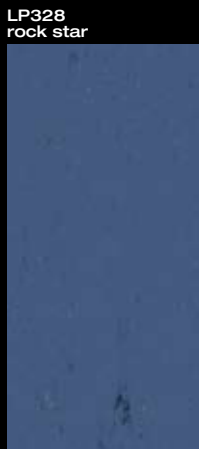
W1302



W1339



W1316



W1328



W1306

**LINORETTE™**

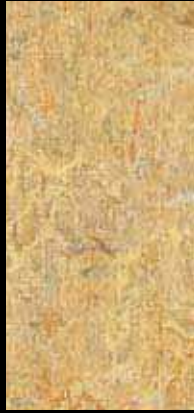
WELD ROD: W1\_\_

LP403  
gobi sand



W1603

LP470  
gibraltar gold



W1670

LP401  
yuka tan



W1601

LP420  
serengeti green



W1620

LP321  
shallow end



W1310

LP330  
snorkel



W1324

LP425  
andes brown



W1625

LP460  
grand canyon



W1660

LP440  
hudson valley blue



W1642

LP402  
brisbane blue



W1602

LP305  
deep end



W1305

LP308  
scuba



W1308

LP476  
yukon desert



W1605

LP410  
odessa red



W1610

LP450  
madagascar violet



W1652

LP475  
silver city



W1604

# GRANETTE™

WELD ROD: W1\_\_

LP151  
spider webs



W1167

LP164  
falling rock



W1160

LP167  
seedling



W1158

LP170  
pollen



W1171

LP124  
looks like rain



W1154

LP137  
prickly pear



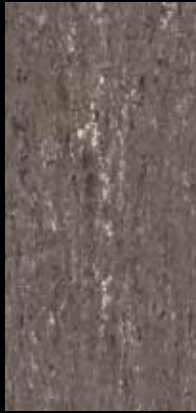
W1164

LP152  
itsy bitsy spider



W1168

LP165  
mudslide



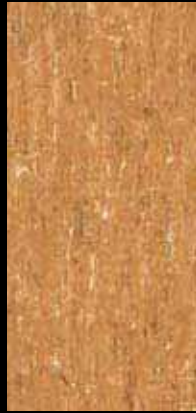
W1161

LP168  
branching out



W1159

LP171  
bees knees



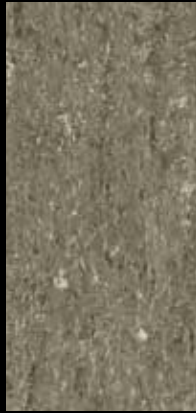
W1172

LP125  
light showers



W1156

LP138  
stinging nettle



W1165

LP153  
black widow



W1169

LP166  
peat



W1162

LP169  
tree bark



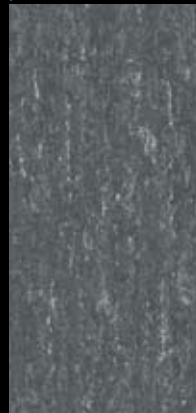
W1163

LP173  
wax on



W1173

LP127  
perfect storm



W1157

LP139  
holly go lightly



W1166





COVENANT MEDICAL CENTER  
MARMORETTE™ LP022 caspian blue,  
LP050 silver gray, LP068 blue spa,  
LP072 goldenrod, LP525 hey sailor

Visit [armstrong.com/linoleum](http://armstrong.com/linoleum) • Call 1 877 ARMSTRONG

**Comparative Data**

Products (5)	Overall Thickness (nominal) (1)	Static Load Limit PSI (kg/cm <sup>2</sup> ) (2, 2a, 2b)	Durability (3)	Maintainability (3)	Resilience (3)	Reference Specs (4)
<b>MARMORETTE™</b>	0.080 in. (2.0 mm) 0.100 in. (2.5 mm) 0.125 in. (3.2 mm)	450 (31.6) (2a) 250 (17.6) (2b)	G VG E	E E E	G G VG	ASTM F 2034, Type I
<b>LINORETTE™</b>	0.100 in. (2.5 mm)	450 (31.6) (2a) 250 (17.6) (2b)	VG	E	G	ASTM F 2034, Type I
<b>COLORETTE™</b>	0.100 in. (2.5 mm) 0.125 in. (3.2 mm)	450 (31.6) (2a) 125 (8.8) (2b)	VG E	VG VG	G VG	ASTM F 2034, Type I
<b>UNI WALTON™</b>	0.100 in. (2.5 mm) 0.125 in. (3.2 mm)	450 (31.6) (2a) 125 (8.8) (2b)	VG E	F (6) F (6)	G VG	ASTM F 2034, Type I
<b>GRANETTE™</b>	0.100 in. (2.5 mm) 0.125 in. (3.2 mm)	450 (31.6) (2a) 250 (17.6) (2b)	VG E	E E	G VG	ASTM F 2034, Type I

- Overall and wear layer thicknesses are nominal and subject to normal manufacturing variances.
- PSI: lbs./sq. in. (kg/cm<sup>2</sup>)
  - Static Load Limit per ASTM F 970
  - Static Load Limit per ASTM F 970 modified by specifying a higher load on a smaller diameter tip. All other test conditions are standard. Subjective visual, no visually apparent indentation.
- Subjective ratings (Excellent, Very Good, Good, Fair) are in relation to other Armstrong® commercial resilient floors. Ratings are not directly related to any one test. They are broadly based on tests and experience of Armstrong R & D under varying conditions and circumstances. These ratings should NOT be used for comparison to ratings used by other manufacturers to rank their own products.
- Reference Specifications: Armstrong products are manufactured to meet or exceed specification requirements, except as noted.
- All products meet the following Fire Test Data:
  - ASTM E 648 Flooring Radiant Panel Critical Radiant Flux – 0.45 watts/cm<sup>2</sup> or more, Class I
  - ASTM E 662 Smoke Chamber Specific Optical Smoke Density – 450 or less. Numerical flammability ratings alone may not define product performance under actual fire conditions. These ratings are provided only for use in the selection of products to meet specified limits.
- UNI WALTON is recommended only for decorative borders and accents.

**Light Reflectivity Values in Percent**

0-9	10-14	15-19	20-24	25-29	30-34	35-39	40-44	45-49	50-54	55-59
LP018	LP022	LP003	LP068	LP000	LP065	LP007	LP020	LP040	LP098	LP259
LP059	LP048	LP008	LP099	LP023	LP124	LP070	LP091	LP045		LP382
LP096	LP049	LP026	LP125	LP053	LP151	LP072	LP092	LP076		
LP208	LP089	LP050	LP138	LP090	LP164	LP084	LP312	LP170		
LP230	LP153	LP066	LP152	LP168	LP171	LP137	LP378	LP301		
LP260	LP166	LP127	LP172	LP330	LP316	LP167	LP403	LP352		
LP280	LP169	LP139	LP236	LP343	LP321	LP207	LP470	LP371		
LP381	LP210	LP165	LP282	LP401	LP475	LP335	LP530	LP552		
	LP328	LP308	LP303	LP425	LP526	LP521	LP546	LP555		
	LP360	LP402	LP305	LP440	LP556	LP571	LP575			
	LP507	LP410	LP306	LP476	LP570					
	LP511	LP450	LP320	LP506						
	LP514	LP509	LP359	LP510						
	LP525	LP513	LP420	LP512						
	LP527	LP523	LP460	LP516						
	LP528	LP531	LP515	LP519						
	LP548	LP532	LP522	LP543						
		LP544	LP524	LP553						
		LP554	LP547	LP573						
			LP557							

## Building on a Heritage of Sustainability

More than a century ago, Armstrong ceased discarding post-industrial cork waste and began recycling it – first into corkboard insulation, and soon afterwards into the green product on which our modern flooring business was built: linoleum.

## Made From Renewable Raw Materials

- Contributes to MR6.0\* (Rapidly Renewable Resources)
- Armstrong<sup>®</sup> linoleum contains 36% rapidly renewable content comprised of cork, linseed oil, wood flour and jute backing.

## Recycled Content

- Contributes to MR4.1, 4.2\* (10% & 20% post-consumer + 1/2 pre-consumer)
- Armstrong linoleum contains 35% pre-consumer recycled content in the form of wood dust and cork flour.

## Low Emitting Material

- Compliant with EQ4.3\* (Indoor Air Quality)
- Linoleum is independently tested and certified as a low-emitting product under the FloorScore<sup>™</sup> program.

## EcoScorecard<sup>SM</sup>

Time-saving, web-based tool that allows users to quickly search, evaluate and document a product's environmental contributions according to these key industry rating systems:

- USGBC LEED<sup>®</sup> Rating System
- Canada Green Building LEED Rating System
- GGHC Green Guide for Health Care
- CHPS Collaborative for High Performance Schools
- LABS21

## ecoSCORECARD<sup>™</sup>

At Armstrong we are committed to leading by example, as evidenced by the U.S. Green Building Council's Platinum LEED certification of our headquarters building in 2007. It's only the sixth building to earn the highest possible certification and the first outside of California.

\*Based on LEED-NC v2.2



**HIGHGATE ELEMENTARY**

MARMORETTE™ LP020 sweet grass, LP048 firebird red,  
LP068 blue spa, LP072 goldenrod, LP519 blast off

Visit [armstrong.com/linoleum](http://armstrong.com/linoleum) • Call 1 877 ARMSTRONG

## Products

Armstrong warrants its regular (first quality) commercial floor products to be free from manufacturing defects for five years from the date of purchase.

## Installation

Armstrong warrants the installation integrity for products from the date of purchase for five years if installed according to the Armstrong Guaranteed Installation Systems manual, F-5061. The F-5061 manual is revised on a yearly basis, and floors must be installed according to the recommendations contained in the issue of F-5061 that is current and available at the time of installation.

The applicable warranty for new product installations not yet included in the current version of F-5061 shall be the warranty and installation guidelines and procedures as outlined in the new applicable product literature, until such time that the F-5061 has been updated.

## Workmanship

Armstrong does not warrant the installers' workmanship. Workmanship errors should be addressed to the contractor who installed the floor. Your Armstrong commercial floor should be professionally installed by contractors who have demonstrated expertise in installing commercial floors.

## Terms

Within One Year:

If a defect covered by this warranty is reported to Armstrong in writing within one year of purchase, Armstrong will supply new material of the same or similar grade sufficient to repair or replace the defective material. Armstrong will also pay reasonable labor costs.

Within Two Years:

If a defect covered by this warranty is reported to Armstrong in writing after one year but within two years of purchase, Armstrong will supply new material of the same or similar grade sufficient to repair or replace the defective material. Armstrong will also pay fifty percent of the reasonable labor costs.

After Two Years:

If a defect covered by this warranty is reported to Armstrong in writing after two years but within five years of purchase, Armstrong will supply new material of the same or similar grade sufficient to repair or replace the defective material. Armstrong will not pay labor costs.

Armstrong will not pay labor costs to repair or replace material with defects that were apparent before or at the time of installation.

## Exclusions

The following are not covered by this warranty:

- Improper installation
- Differences in color between products and samples or photographs
- Indentation from improper loading including high heels, spiked shoes, rolling loads, chairs or other furniture not using floor protectors
- Discoloration
- Failure of the floor to adhere to the subfloor due to, for example, moisture, alkaline or hydrostatic pressure from the subfloor
- Inappropriate end-user activities

THERE ARE NO WARRANTIES BEYOND THIS EXPRESSED WARRANTY. ALL OTHER WARRANTIES, INCLUDING WARRANTIES OF MERCHANTABILITY OR FITNESS FOR A PARTICULAR PURPOSE, ARE EXCLUDED.

ARMSTRONG EXCLUDES ANY LIABILITY FOR LOST PROFITS OR ANY OTHER INDIRECT, SPECIAL OR CONSEQUENTIAL DAMAGES. THE REMEDIES CONTAINED HEREIN ARE THE ONLY REMEDIES AVAILABLE FOR BREACH OF THIS WARRANTY.

## Warranty Owner

This warranty extends only to the original end-user.



This chart provides an overview of recommendations for Armstrong® linoleum by end-use market and for specific spaces. Use these recommendations as a guideline for selecting Armstrong flooring for your application.

## Recommended Applications

	MARMORETTE™			LINORETTE™	COLORETTE™		UNI WALTON™ (d)		GRANETTE™	
	2.0	2.5	3.2	2.5	2.5	3.2	2.5	3.2	2.5	3.2
<b>Health Care/Hospital (a)</b>										
Cafeteria, Dining Area (e)	R	H	H	H	R	R	R	R	H	H
Chapel	R	H	H	H	R	R	R	R	H	H
Corridors	N	R	H	R	R	R	R	R	R	H
Critical/Intensive Care	N	H	H	H	R	R	R	R	H	H
Dialysis (i)	N	N	N	N	N	N	N	N	N	N
Dry Physical Therapy	R	H	H	H	R	R	R	R	H	H
Elevators	N	R	H	R	R	R	R	R	R	H
Emergency Room Areas	N	R	R	R	R	R	R	R	R	R
Exam/Procedure Rooms	N	R	R	R	R	R	R	R	R	R
Gift Shop	N	H	H	H	R	R	R	R	H	H
Hydro Physical Therapy	N (3)	N (3)	N (3)	N (3)	N (3)	N (3)	N (3)	N (3)	N (3)	N (3)
Hyperbaric Room	N (6)	N (6)	N (6)	N (6)	N (6)	N (6)	N (6)	N (6)	N (6)	N (6)
Labor Delivery Rooms	N	R	R	R	R	R	R	R	R	R
Laboratories	N	N	N	N	N	N	N	N	N	N
Lobbies	N	R	H	R	R	R	R	R	R	H
Nurses Station	N	H	H	H	R	R	R	R	H	H
Office/Administrative/Conf. Rooms	R	H	H	H	R	H	H	H	H	H
Operating Rooms (b)	N	N	N	N	N	N	N	N	N	N
Patient Rooms	R	H	H	H	R	R	R	R	H	H
Pharmacy	R	H	H	H	H	H	H	H	H	H
Ramps/Ramped Corridor (Dry)	N (3)	N (3)	N (3)	N (3)	N (3)	N (3)	N (3)	N (3)	N (3)	N (3)
Scrub Areas	N	N	N	N	N	N	N	N	N	N
Stairways/Landings	R	R	R	R	R	R	R	R	R	R
Staff Lounge	R	H	H	H	H	H	R	R	H	H
Utility/Storage Room/Filing	R	R	R	R	R	R	R	R	R	R
Waiting Rooms	N	H	H	H	R	R	R	R	H	H
<b>Assisted Living/Military Housing/Light Commercial</b>										
Activity Rooms/Common Areas	R	R	H	R	R	H	R	H	R	H
Beauty Salon/Barber Shop	N	R	R	R	R	R	R	R	R	R
Corridors	N	H	H	H	R	R	R	R	H	H
Daycare Areas	R	R	R	R	R	R	R	R	R	R
Dining Areas	R	R	H	R	R	H	R	H	R	H
Doctor/Dentist Office	N	R	R	R	R	R	R	R	R	R
Residence Bathrooms (i)	N	N	N	N	N	N	N	N	N	N
Residence Kitchens (e)	R (e)	R (e)	R (e)	R (e)	R (e)	R (e)	R (e)	R (e)	R (e)	R (e)
Residence Rooms/Barracks	R	R	H	R	R	H	R	R	R	H
<b>Education</b>										
Auditoriums	R	H	H	H	R	R	R	R	H	H
Cafeteria, Dining Area (e)	R	H	H	H	R	R	R	R	H	H
Classrooms/Lecture Halls	R	H	H	H	R	R	R	R	H	H
Computer Rooms	R (6)	R (6)	R (6)	R (6)	R (6)	R (6)	R (6)	R (6)	R (6)	R (6)
Corridors	R	H	H	H	R	R	R	R	H	H
Dormitory Rooms	R	R	R	R	R	R	R	R	R	R
Food Service Area (e)	N	R (i)	R (i)	R (i)	R (i)	R (i)	R (i)	R (i)	R (i)	R (i)
Gymnasium	N	H	H	H	R	R	R	R	H	H
Laboratories	N	R	R	R	N	N	R	R	R	R
Lavatories	N	N	N	N	N	N	N	N	N	N
Library	R	H	H	H	R	R	R	R	H	H
Locker Rooms (No Spikes)	N (3)	N (3)	N (3)	N (3)	N (3)	N (3)	N (3)	N (3)	N (3)	N (3)
Multipurpose Room/Cafeteriums	R	H	H	H	R	R	R	R	H	H
Office/Administrative/Conf. Rooms	R	H	H	H	R	H	R	R	H	H
Ramps/ Ramped Corridors (Dry)	N (3)	N (3)	N (3)	N (3)	N (3)	N (3)	N (3)	N (3)	N (3)	N (3)
Showers/Shower Rooms	N (3)	N (3)	N (3)	N (3)	N (3)	N (3)	N (3)	N (3)	N (3)	N (3)
Stairways/Landings	R	R	R	R	R	R	R	R	R	R
Teacher's Lounge	R	H	H	H	R	R	R	R	H	H
Utility/Storage Areas	R	R	R	R	R	R	R	R	R	R
Vestibule/Entryways/Foyers (i)	N	N	N	N	N	N	N	N	N	N

**H = Highly Recommended**

The best flooring choice(s) for the space.

**R = Recommended**

Flooring choice(s) that are suitable for the space.

**N = Not Recommended**

Flooring that should not be used for the space.

• The ratings of H, R or N are based on an evaluation of the performance, cost and aesthetic requirements of the space.

• This chart provides recommendations for all Armstrong linoleum products. 2.0 mm (0.080 in.) thick linoleum products are recommended only for use in residential and light traffic commercial spaces.

## Recommended Applications

	MARMORETTE™			LINORETTE™	COLORETTE™		UNI WALTON™ (d)		GRANETTE™	
	2.0	2.5	3.2	2.5	2.5	3.2	2.5	3.2	2.5	3.2
<b>Mercantile</b>										
Automobile Showrooms	N	R	H	R	N	R	R	R	R	H
Checkout/Cash Wrap	N	R	H	R	R	R	R	R	R	H
Food Service (e)	N	R (i)	R (i)	R (i)	R (i)	R (i)	R (i)	R (i)	R (i)	R (i)
Frozen Food	N	R	R	R	R	R	R	R	R	R
Indoor Mall Common Areas	N	N	R	N	N	N	N	N	N	R
Produce Area	N	N	N	N	N	N	N	N	N	N
Sales Floor – Department Stores	N	H	H	H	R	R	R	R	H	H
Sales Floor – Grocery	N	R	R	R	R	R	R	R	R	R
Sales Floor – Mass Merchant	N	H	H	H	R	R	R	R	H	H
Specialty Shops/Areas	N	H	H	H	R	R	R	R	H	H
<b>Office</b>										
Computer Room	N (6)	N (6)	N (6)	N (6)	N (6)	N (6)	N (6)	N (6)	N (6)	N (6)
Corridors	N	H	H	H	R	R	R	R	H	H
Elevators	N	R	H	R	R	R	R	R	R	H
Lavatories	N	N	N	N	N	N	N	N	N	N
Lobby	N	R	H	R	R	H	R	R	R	H
Lunchrooms (e)	R	H	H	H	R	H	R	R	H	H
Office/Conference Rooms	R	H	H	H	R	H	R	R	H	H
Stairways/Landings	R	R	R	R	R	R	R	R	R	R
Utility/Storage Rooms	R	R	R	R	R	R	R	R	R	R
<b>Hospitality</b>										
Around Whirlpool/Spas	N (3)	N (3)	N (3)	N (3)	N (3)	N (3)	N (3)	N (3)	N (3)	N (3)
Corridors	N	H	H	H	R	R	R	R	H	H
Dining Room (e)	R	H	H	H	R	R	R	R	H	H
Elevators	N	R	H	R	R	R	R	R	R	H
Exercise Rooms	N	R	H	R	R	H	N	N	R	H
Guest Bathrooms (f)	N	N	N	N	N	N	N	N	N	N
Guest Rooms	R	R	R	R	R	R	R	R	R	R
Lobby	N	R	H	R	R	R	R	R	R	H
Lounge	R	H	H	H	R	R	R	R	H	H
Stairways/Landings	R	R	R	R	R	R	R	R	R	R
Vending Areas (i)	N	R	R	R	R	R	R	R	R	R
<b>Light Industrial (g)</b>										
Clean Rooms	N	N	N	N	N	N	N	N	N	N
Computer Repair Lab	N (6)	N (6)	N (6)	N (6)	N (6)	N (6)	N (6)	N (6)	N (6)	N (6)
Electronic Testing Lab	N (6)	N (6)	N (6)	N (6)	N (6)	N (6)	N (6)	N (6)	N (6)	N (6)
Electronics Manufacturing	N (6)	N (6)	N (6)	N (6)	N (6)	N (6)	N (6)	N (6)	N (6)	N (6)
Environmental Conditioning Unit	N	N	N	N	N	N	N	N	N	N
Photo Processing	N	R	R	R	R	R	R	R	R	R
Production Laboratory	N	R	R	R	R	R	R	R	R	R
Research Laboratory	N	R	R	R	R	R	R	R	R	R
Small Parts Assembly	N	R	R	R	R	R	R	R	R	R
Sterile Packaging	N	N	N	N	N	N	N	N	N	N
Warehouse	N	N	N	N	N	N	N	N	N	N
<b>Transportation/Public Venues</b>										
Airport/Railway/Bus Terminals	N	N	R	N	N	N	N	N	N	R
Civic/Convention Centers	N	N	R	N	N	N	N	N	N	R
Museums/Cultural Centers	N	R	H	R	R	R	R	R	R	H

### NOTES:

- Numerical footnotes apply to the space requirements.
  - Alpha footnotes apply to the product's suitability for the space.
- (3) Slip Retardance — A more secure walking surface is required.
- (6) Not recommended in areas that require electrostatic discharge control.
- (a) In most cases veterinary applications are similar.
- (b) Only operating rooms not requiring conductive flooring.
- (d) Only recommended for accents and borders.
- (e) Armstrong floors are not recommended for commercial kitchens and commercial food processing areas, including behind fast-food counters.
- (g) Most Armstrong floors are not recommended for heavy industrial areas.
- (i) No standing water; walk-off mats required.

### In addition to spaces listed on this chart:

- Armstrong floors may be used on stair steps, risers and landings. A manufactured slip-retardant nosing should always be applied on steps.
- Most Armstrong® commercial sheet floors can be flash coved (integral cove). Most building codes consider flash coving in the same category as baseboard trim with respect to fire rating. Consult applicable codes for the particular project to determine the interpretation of allowable height for flash cove.
- Armstrong floors are not recommended for exterior use, for interior spaces where pointed spike golf or track shoes will be used, or in areas where the floor will be subjected to unusually concentrated static or dynamic loads.
- Armstrong floors should not be used as wall covering or wall surfacing.

**MARMORETTE™ ■ COLORETTE™ ■ LINORETTE™**  
**UNI WALTON™ ■ GRANETTE™**

Specification Data

**Material**

A homogeneous mixture of linoleum cement (linseed oil, natural tree resins, drying oil catalysts), wood flour, limestone and color pigments calendered onto a jute fabric backing.

**Construction and Colors**

Color and pattern detail are dispersed throughout the thickness of the wear layer. Color pigments are insoluble in water and resistant to cleaning agents and light.

**Size**

6 ft. 7 in. (2.0 m) wide; up to 98.4 ft. (30 m) long

**Gauge (nominal thickness)**

	0.080 in. (2.0 mm)	0.100 in. (2.5 mm)	0.125 in. (3.2 mm)
MARMORETTE	X*	X	X†
LINORETTE		X	
COLORETTE		X	X*
UNI WALTON		X	X*
GRANETTE		X	

\* Special order available on select patterns; variable lead times (contact Customer Order Services), no minimum quantity.

† Special order available on select patterns; variable lead times (contact COS); minimum quantity of 1,000 sq. yds.

**Limitations**

Linoleum products should not be used in the following areas:

- Hospital operating rooms
- Commercial kitchens and commercial food-processing areas
- Heavy industrial areas
- Exterior areas
- Where pointed spikes such as golf or track shoes will be used
- Where the floor will be subjected to unusually concentrated static or dynamic loads

**NOTE:** Concentrated static and dynamic loads such as hospital beds, portable x-ray machines, roll-out bleachers, etc. equipped with wheels, casters, rests or other floor contact devices may visibly damage resilient as well as other types of floor coverings. Hard setting reactive adhesives like our S-240 Epoxy, when used to install flooring underneath such furnishings and equipment, may help against damage. For questions regarding product suitability and detailed instructions for floor preparation and installation in these applications, call 1 877 ARMSTRONG.

**NOTE:** UNI WALTON should not be used as a primary overall floor color in field areas.

**Suitable for Application Over**

- Concrete, terrazzo and other dry, structurally sound monolithic subfloors, which are suspended on grade or below grade
- Suspended wood subfloor construction with approved wood underlayments, and a minimum of 18 in. (45.7 cm) well-ventilated air space below
- Steel, stainless steel, aluminum and lead, and most existing single-layer resilient floors on approved underlayments
- Radiant-heated subfloors with a maximum surface temperature of 85° F (29° C)

**Unsuitable for Application Over**

- Subfloors where excessive moisture or alkali is present
- Sleeper-constructed wood subfloors
- Lightweight aggregate concrete subfloors having a density of less than 90 lbs. per cu. ft. (1442 kg/m<sup>3</sup>) or cellular concrete having a plastic (wet density less than 100 lbs. per cu. ft. (1602 kg/m<sup>3</sup>)[94 lbs. per cu. ft. (1506 kg/m<sup>3</sup>) dry weight], or concrete having a compressive strength of less than 3500 psi (24 Mpa). Concrete slabs with heavy static and/or dynamic loads should have higher design strengths and densities calculated to accommodate such loads.

**Concrete curing agents, sealers, hardeners, or parting agents should be removed.**

**TECHNICAL DATA**

**Shipping Weight**

For shipping weight information regarding all Armstrong Linoleum products, visit [armstrong.com/linoleum](http://armstrong.com/linoleum)

**Gloss (typical value)**

60 degrees specular; approximately 8-12

**Reference Specifications**

ASTM F 2034, Type I

**Static Load Limit**

ASTM F 970 450 psi (≤ 0.005" residual indentation)

**NOTE:** While this static load limit meets ASTM F 2034 requirements for residual indentation, it could result in a visually apparent indentation. For this reason, Armstrong proposes the following static load limits.

MARMORETTE, LINORETTE, GRANETTE	250 psi (17.6 kg/cm <sup>2</sup> )
COLORETTE, UNI WALTON	125 psi (8.8 kg/cm <sup>2</sup> )

**Comparative Data**

Product	Overall Thickness	Durability	Maintainability	Resilience
MARMORETTE	0.080 in. (2.0 mm)	G	E	G
	0.100 in. (2.5 mm)	VG	E	G
	0.125 in. (3.2 mm)	E	E	VG
LINORETTE	0.100 in. (2.5 mm)	VG	E	G
COLORETTE	0.100 in. (2.5 mm)	VG	VG	G
	0.125 in. (3.2 mm)	E	VG	VG
UNI WALTON	0.100 in. (2.5 mm)	VG	F	G
	0.125 in. (3.2 mm)	E	F	VG
GRANETTE	0.100 in. (2.5 mm)	VG	E	VG
	0.125 in. (3.2 mm)	E	E	E

**NOTE:** Subjective ratings (excellent, very good, good, fair) are in relation to other Armstrong commercial resilient floors. Ratings are not directly related to any one test. They are broadly based on tests and experience of Armstrong Research and Development under varying conditions and circumstances. These ratings should not be used for comparison to ratings used by other manufacturers to rank their own products.

**Fire Test Data**

ASTM E 648 Flooring Radiant Panel Critical Radiant Flux – 0.45 watts/cm<sup>2</sup> or more, Class I

ASTM E 662 Smoke Chamber Specific Optical Smoke Density – 450 or less

Numerical flammability ratings alone may not define the performance of the product under actual fire conditions. These ratings are provided only for use in the selection of products to meet the specified limits.

**INSTALLATION**

Subfloors/underlayments shall be dry, clean and smooth. They shall be free from paint, varnish, solvents, wax, oil, existing adhesive residue, or other foreign matter. For more detailed instructions regarding proper job conditions as well as installation options and procedures, call the Armstrong TechLine at 1 877 ARMSTRONG; refer to the latest edition of the *Armstrong Guaranteed Installation Systems manual*, F-5061 or visit [armstrong.com/linoleum](http://armstrong.com/linoleum).

**NOTE:** Moisture testing must be conducted. Armstrong offers a guideline of a maximum acceptable moisture vapor emission rate (MVER) of 5.0 lbs. per 1000 sq. ft. per 24 hours, or 80% internal relative humidity. Tests should also be conducted for compatibility with the substrate. When testing for alkalinity, the allowable readings for the installation of Armstrong® flooring are 5 to 9 on the pH scale.

**MAINTENANCE**

Linoleum flooring is designed to be maintained by traditional resilient flooring maintenance methods, which include the use of polishes, sealers and spray buffing.

**NOTE:**

- All maintenance solutions must be 10 pH or less
- Avoid excessive amounts of liquid
- Do not use highly solvent or abrasive products or equipment on linoleum flooring

For specific, ongoing maintenance procedures, see *Commercial Linoleum Installation/Maintenance Tip Sheet*, F-7796 or visit [armstrong.com/linoleum](http://armstrong.com/linoleum).

**WARRANTIES**

Armstrong warrants its regular (first quality) commercial floors and wall base to be free from manufacturing defects, and warrants the installation integrity for five years from the date of purchase, if installed according to the *Armstrong Guaranteed Installation Systems manual*, F-5061. This warranty extends only to the original end user. See *Armstrong Commercial Floor Warranty*, F-3349 or visit [armstrong.com/linoleum](http://armstrong.com/linoleum).

**WARNING: EXISTING IN-PLACE RESILIENT FLOOR COVERING AND ASPHALTIC ADHESIVES. DO NOT SAND, DRY SWEEP, DRY SCRAPE, DRILL, SAW, BEADBLAST, OR MECHANICALLY CHIP OR PULVERIZE EXISTING RESILIENT FLOORING, BACKING, LINING FELT, ASPHALTIC "CUTBACK" ADHESIVE, OR OTHER ADHESIVE.**

These existing in-place products may contain asbestos fibers and/or crystalline silica.

Avoid creating dust. Inhalation of such dust is a cancer and respiratory tract hazard.

Smoking by individuals exposed to asbestos fibers greatly increases the risk of serious bodily harm.

Unless positively certain that the existing in-place product is a non-asbestos-containing material, you must presume it contains asbestos. Regulations may require that the material be tested to determine asbestos content and may govern removal and disposal of material.

See current edition of the Resilient Floor Covering Institute (RFCI) publication *Recommended Work Practices for Removal of Resilient Floor Coverings* for instructions on removing all resilient floor covering structures or contact your retailer or Armstrong World Industries, Inc. 1 800 233 3823.

The floor covering or adhesive in this package does NOT contain asbestos.

The knowledge and technical support you need to bring your vision to life.

Visit [armstrong.com/flooring](http://armstrong.com/flooring) or  
Call 1 877 ARMSTRONG (276 7876)

Choose option 2 to:

Talk to a **TechLine Flooring Expert**

Contact your **Local Armstrong Flooring Representative**  
Order **Samples and Literature**

Printed in United States of America.

© 2008 AWI Licensing Company

FloorScore™ is a trademark of the Resilient Floor Covering Institute. LEED® is a registered trademark of the United States Green Building Council. EcoScorecard™ is a service mark of Viridity. QMI is a trademark of Quality Management Institute. All other trademarks owned by AWI Licensing Company. LEED® and the Armstrong logo are registered in the United States and Canada. Armstrong® and BioBased Tile® are registered in the United States only.



LEED eligible under  
Credit EQ4.3 for  
Indoor Air Quality.



ISO 9001



Quality  
Management  
Standard