

CEILING | SYSTEMS

Between us, ideas become reality™

METALWORKS™
Torsion Spring

Armstrong®



MetalWorks Torsion Spring 2' x 2' with M15 perforation in Silverlume on Prelude® Suspension System

Key Selection Attributes

- Monolithic visual with 100% downward accessibility
- Choose from five standard panel sizes that install on pre-slotted standard 15/16" grid
- Ten standard finishes and six standard perforations available to enhance design aesthetics and acoustical performance
- Ceitex finish is applied over the perforation to offer excellent acoustics and high light reflectance with the look of drywall
- Laminate finishes provide superior wood look visual with printed vinyl bonded to aluminum
- NRC values up to 0.90 with fiberglass infill panels (select perforation patterns)
- Durable – Scrubbable, Impact-resistant, Soil-resistant, Washable
- Up to 98% recycled content aluminum
- Additional sizes, colors, and perforations available. For more information, visit our website at armstrong.com/metalworks or call 1 877 ARMSTRONG and select options 1-1-4 to work with the Architectural Specialties project management team

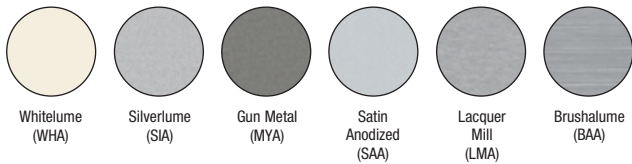


MetalWorks Torsion Spring 2' x 2' with M15 perforation in Silverlume on Prelude® Suspension System

Color Selection

Due to printing limitations, shade may vary from actual product.

MetalWorks



Laminates

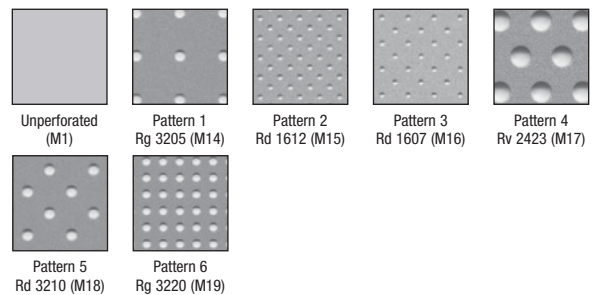


Ceitex



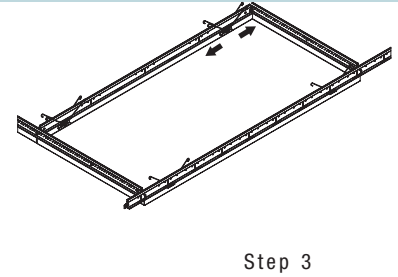
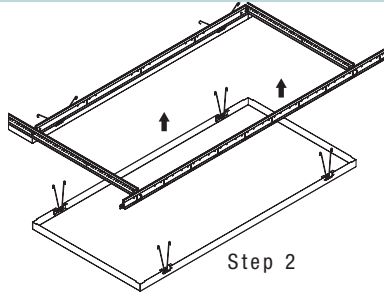
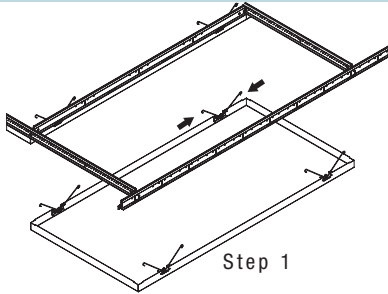
Ceitex (CLA)
Available in M20
perforation only

Perforation Options

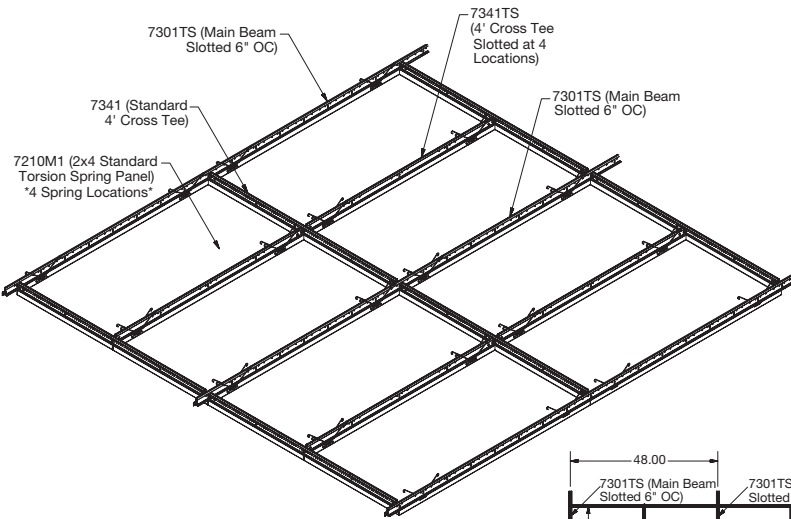


Additional sizes, colors, and perforations available. For more information, visit our website at armstrong.com/metalworks or call 1 877 ARMSTRONG and select options 1-1-4 to work with the Architectural Specialties project management team.

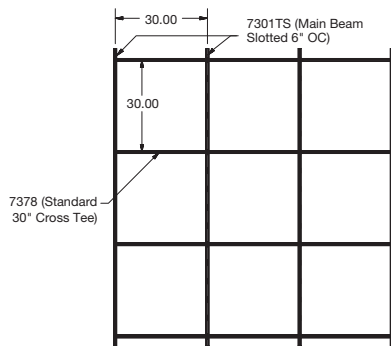
How to Install Panels



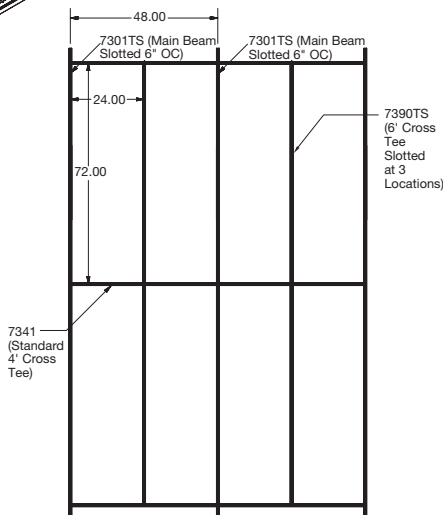
Installation Details



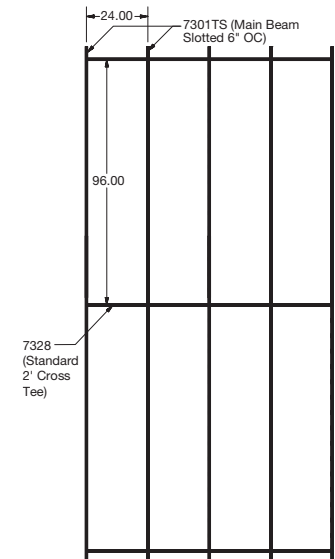
2' x 4' Standard Panel Layout with Main Beams 4' O.C., Standard 4' Prelude Cross Tees, 4' Slotted Cross Tees



Grid Layout for 30" x 30" Panels



Grid Layout for 2' x 6' Panels



Grid Layout for 2' x 8' Panels

LEED® Credits

Energy	Waste Mgmt	Recycled Content	Local Materials	Renewable Materials	Daylight & Views
✓	✓	✓	✓	✓	✓
Ceiltex finish			Location Dependent		Ceiltex finish

LEED for Schools

Acoustics	Low Emitting or CHPS
✓	✓

Colors and Perforations

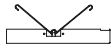
Whitelume (WHA)	Lacquer Mill (LMA)	Laminates Rock Maple (LRM)	Unperforated (M1)	Pattern 4 Rv 2423 (M17)
Silverlume (SIA)	Brushalume (BAA)	Laminates Light Cherry (LLC)	Pattern 1 Rg 3205 (M14)	Pattern 5 Rd 3210 (M18)
Gun Metal (MYA)		Laminates Wild Cherry (LWC)	Pattern 2 Rd 1612 (M15)	Pattern 6 Rg 3220 (M19)
Satin Anodized (SAA)		Ceiltex (CLA)	Pattern 3 Rd 1607 (M16)	

Visual Selection

Performance Selection

Acoustical Performance

Dots represent highest level of performance

Edge Profile	Item Number*	Dimensions	Light Reflect	Springs per Panel
METALWORKS Torsion Spring Square with Acoustical Fleece				
	7209_ _ _ _	2' x 2'	0.77 0.89*	4
	7210_ _ _ _	2' x 4'	0.77 0.89*	4
	7211_ _ _ _	2' x 6'	0.77 0.89*	6
	7212_ _ _ _	2' x 8'	0.77 0.89*	6
	7213_ _ _ _	30" x 30"	0.77 0.89*	4

* When specifying or ordering, include appropriate perforation and color suffix (e.g., 7209 M1 LMA) with item number. Light reflectance is for unperforated white. For Ceiltex, specify M20 perforation.
* Ceiltex light reflectance



Perforation	NRC with acoustical fleece**	NRC with 1" fiberglass infill panel**
M1	-	-
M14	0.55	0.85
M15	0.70	0.90
M16	0.70	0.80
M17	0.75	0.90
M18	0.65	0.85
M19	0.75	0.90
M20 (Ceiltex only)	0.70	0.90

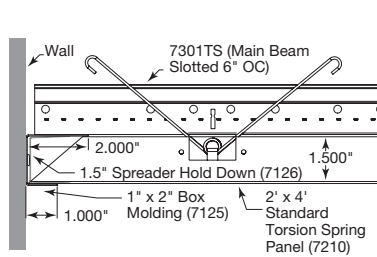
** Maximum NRC achieved with acoustical infill (item 8200100 or 5823). For additional infill options, refer to the Acoustical Infill data page (CS-4172).

Suspension System

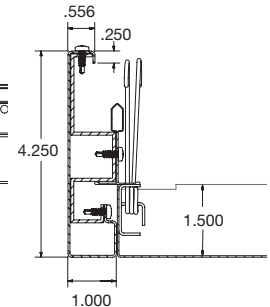
15/16" Prelude® XL® - Some items slotted for Torsion Spring. See below.

Item Number	Description	Dimensions
7301TS	Prelude 12' HD Main Beam – slotted for Torsion Spring	15/16" x 44" x 1-11/16"
XL7341TS	Prelude 4' Cross Tee – slotted for Torsion Spring	15/16" x 48" x 1-11/16"
XL7390TS	Prelude 6' Cross Tee – slotted for Torsion Spring	15/16" x 72" x 1-11/16"
XL7378	Prelude 30" Cross Tee	15/16" x 30" x 1-11/16"
XL7328	Prelude 2' Cross Tee	15/16" x 24" x 1-11/16"
XL7341	Prelude 4' Cross Tee	15/16" x 48" x 1-11/16"
XL7134	90° Alignment Clip	N/A

Installation Detail – Wall Perimeter



Installation Detail – Perimeter Trim



Accessories

Item Number	Description	Dimensions Nominal W x L x H	Color	Pieces/ Carton
7125_ _ _	Box Molding (for Laminates, Black is recommended)	2" x 120" x 1.5"	WHA, SIA, MYA, SAA, LMA, BAA, BL	10
7129	Torsion Spring Hook Access Tool	N/A	N/A	1
7130	Torsion Spring Suction Access Tool	N/A	N/A	1
7131	Torsion Spring Perimeter Trim	1" x 96" x 4.25"	WHA, SIA, MYA, SAA, LMA, BAA, BL	10
7126	Spreader Hold Down	1" x 10-5/8" x 1-1/2"	N/A	10
5823	BioAcoustic™ Infill Panel	2' x 2' x 5/8"	Black	12
8200100	1" Fiberglass Infill Bag	2' x 2' x 1"	Black (Gloss)	12

Physical Data

Material
Aluminum – thickness 0.040"

Finishes
Laminates: Vinyl-faced membrane
Ceiltex: Acrylic latex paint on acoustically transparent membrane
Painted finishes: Factory-applied polyester paint

Acoustical Options
Perforated panels are supplied with a black fiberglass fleece to absorb sound.

Fire Performance
Painted aluminum and Ceiltex finishes tested per ASTM E84. Flame Spread Index 25 or less. Smoke Developed Index 50 or less. Laminate finish tested per ASTM E84. Flame Spread Index 75 or less. Smoke Developed Index 450 or less.

Recycled Content
Minimum 25%. Up to 98% recycled content available.

Design Consideration
Anodized and Lacquer Mill finishes may vary in shade between production runs as well as over time.

Design Support
Project management assistance is available by calling 1 877 ARMSTRONG, options 1-1-4 to work with the Architectural Specialties project management team.

Warranty
One (1) Year Limited Warranty.
Details: armstrong.com/warranty

Weight; Square Feet/Carton
0.69 lbs/SF