

Vinyl Composition Tile (VCT) and BioBased Tile® (BBT®)



RAFFIA™  
ChromaSpin™  
Stonetex®  
ARTEFFECTS®  
Companion Square®

Feature™ Tile & Strips  
Rave®  
MultiColor™  
Imperial® Texture

STRIATIONS BBT®  
MIGRATIONS®

linoleum  
**biobased tile®**  
lvt  
sheet  
**vct**  
hardwood  
laminated  
specialty flooring  
accessories



STRIATIONS™ T3600 azure and T3603 twilight

## BBT® BioBased Tile®

### **An Affordable Greener Option with Enhanced Performance**

- A greener product option at an affordable price point
- Same proven, long product life as other resilient flooring materials
- More than 5 times greater resistance to impact and more than 2.5 times greater resistance to cracking from uneven subfloors than standard composition tile

### **Size Options**

- STRIATIONS BBT® offers a unique new 12 in. x 24 in. tile and MIGRATIONS® offers a standard 12 in. x 12 in. tile size

### **Enhanced Range of Environmental Benefits**

- BioBased, non-PVC formulation throughout tile
- Contains patent-pending BioStride® polymer made with rapidly renewable, US-grown plant ingredients
- 10% pre-consumer recycled content
- Low VOC Emissions: FloorScore™ certified, meets the requirements of CDPH Standard Method V1.1-2010, compliant with LEED® EQ Credit 4.3
- Composed of 85% North American limestone, an abundant natural resource

BBT<sup>®</sup> BioBased Tile<sup>®</sup>  
**STRIATIONS BBT<sup>®</sup>**



T3609 malted milk



T3608 warm gray



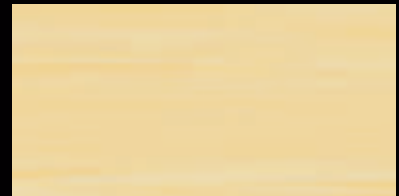
T3607 saddle



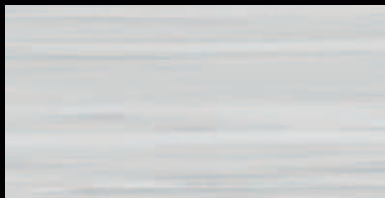
T3600 azure



T3606 green earth



T3605 sunshine



T3601 atmosphere



T3610 haze



T3614 bisque



T3602 steel



T3611 mushroom



T3615 honey



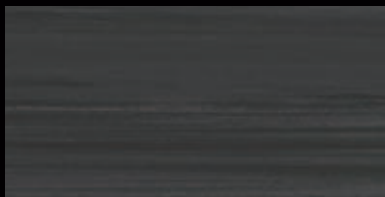
T3603 twilight



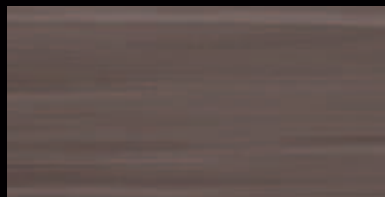
T3612 stardust



T3616 tea time



T3604 midnight



T3613 java



T3617 forest floor

Darker-colored patterns may be susceptible to scratch whitening. These colors may require more frequent maintenance if used in field areas:  
T3604, T3606, T3607, T3613, T3617.

BBT® BioBased Tile®

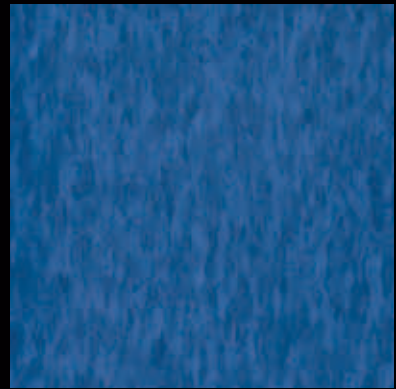
MIGRATIONS®



T3527 green grass



T3524 red berry



T3526 blue waters



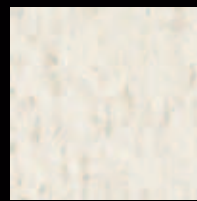
T3522  
lemon squeeze



T3515  
straw yellow



T3504  
ice white



T3511  
quartz white



T3512  
sandy beige



T3523  
orange peel



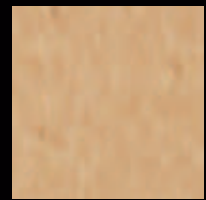
T3516  
spiced orange



T3505  
powder gray



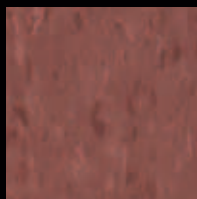
T3510  
natural beige



T3513  
golden sands



T3525  
violet grape



T3517  
pepper red



T3506  
glacier gray



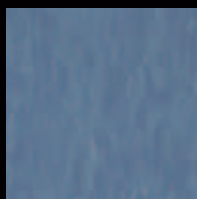
T3503  
ashen gray



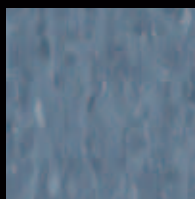
T3514  
loam brown



T3520  
moss green



T3518  
denim blue



T3507  
metal gray



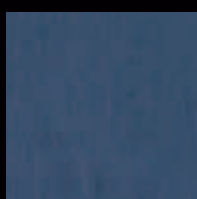
T3502  
pumice gray



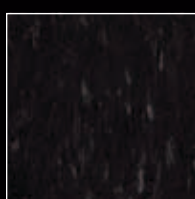
T3509  
mushroom beige



T3521  
summer green



T3519  
washed indigo



T3500  
basalt black



T3501  
platinum gray



T3508  
bark brown

Darker-colored patterns may be susceptible to scratch whitening. These colors may require more frequent maintenance if used in field areas: T3500, T3501, T3514, T3517, T3518, T3519, T3521, T3523, T3524, T3525, T3526, T3527.



MIGRATIONS<sup>®</sup> T3501 platinum gray

visit [www.armstrong.com/bbt](http://www.armstrong.com/bbt) • call 1 877 ARMSTRONG



RAFFIA™ 55800 snowdrift, 55802 charcoal dust, 55809 buttercup

## VCT Vinyl Composition Tile

### Responsible Choices

- Composed of 85% North American limestone, an abundant natural resource
- Three North American regional manufacturing locations reduce environmental impact from transportation
- Low VOC Emissions: FloorScore™ certified meets the requirements of CDPH Standard Method V1.1-2010, compliant with LEED® EQ Credit 4

### Size Options

- The first and only company to step outside the 12 in. x 12 in. box, Armstrong re-energizes vision and value with Stonetex® 18 in. x 18 in. and RAFFIA™ 12 in. x 24 in. tile, while still offering the traditional 12 in. x 12 in. option (see comparative data chart for size options by product)

### Trusted Long Term Performance

- Decades of industry-leading performance and durability
- Leader in the industry for over 50 years
- High quality with a reliable warranty

VCT

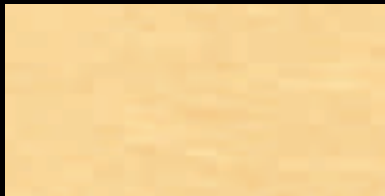
**RAFFIA™**



55814  
sage



55813  
wave



55809  
buttercup



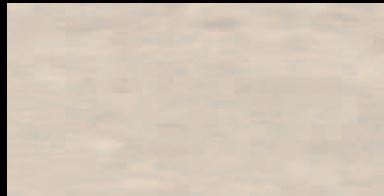
55811  
mesa



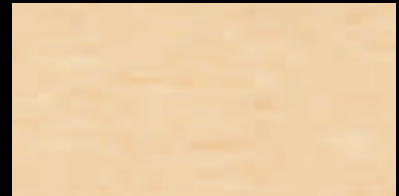
55812  
sky



55800  
snowdrift



55803  
pearl



55806  
butter



55801  
platinum



55804  
smoke



55807  
golden blossom



55802  
charcoal dust



55805  
cocoa

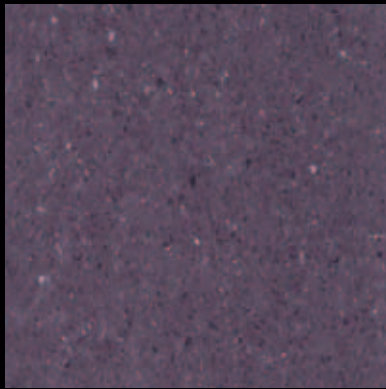


55808  
warm wheat

Darker-colored patterns may be susceptible to scratch whitening. These colors may require more frequent maintenance if used in field areas.

VCT

EXCELON® ChromaSpin™



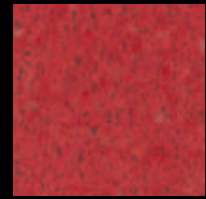
54823  
flash red



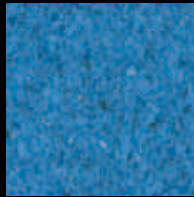
54817  
deep yellow



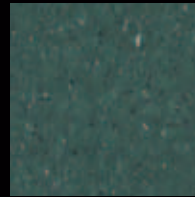
54820  
brilliant orange



54822  
caminelle



54827  
cerulean



54830  
chrome green



54831  
olive



54800  
zinc oxide



54805  
aquatint



54810  
blanco



54815  
soft ochre



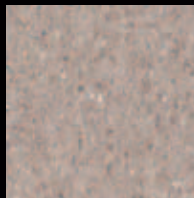
54818  
india red



54801  
paynes gray



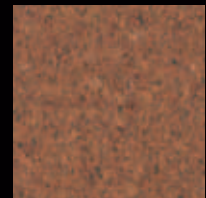
54806  
mezzotint



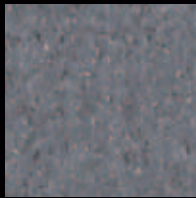
54811  
encaustic



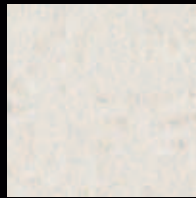
54816  
raw sienna



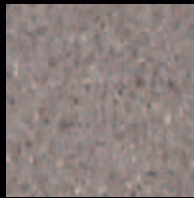
54819  
conte crayon



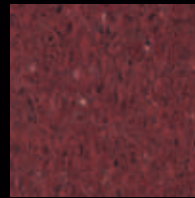
54802  
carbonite



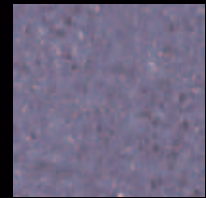
54807  
primer white



54812  
sepiatone



54821  
alizarin crimson



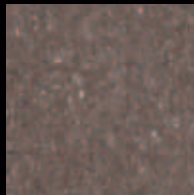
54824  
neodymium



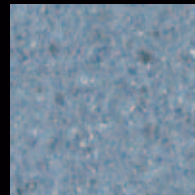
54803  
lamp black



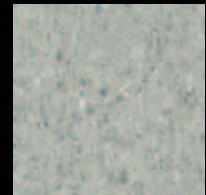
54808  
silk



54813  
durer brown



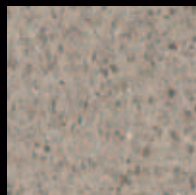
54825  
mineral blue



54828  
vermeer green



54804  
monotype



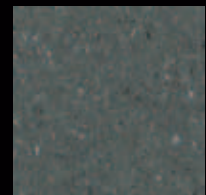
54809  
chiaroscuro



54814  
muslin



54826  
windsor blue



54829  
shadow green

Darker-colored patterns may be susceptible to scratch whitening. These colors may require more frequent maintenance if used in field areas: 54802, 54803, 54812, 54813, 54819, 54820, 54821, 54822, 54823, 54824, 54826, 54827, 54829, 54830, 54831.

visit [www.armstrong.com/vct](http://www.armstrong.com/vct) • call 1 877 ARMSTRONG





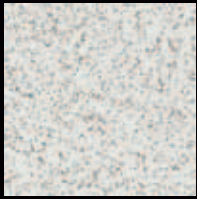
ChromaSpin™ 54807 primer white, 54811 encaustic, 54813 durer brown, 54824 neodymium

visit [www.armstrong.com/vct](http://www.armstrong.com/vct) • call 1 877 ARMSTRONG

VCT

EXCELON® Stonetex®

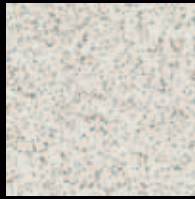
featuring **CONTINUUM™**  
COLOR + DESIGN



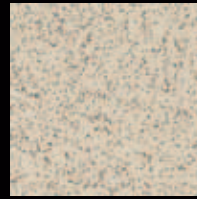
52140  
chalk white



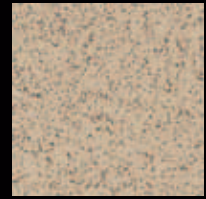
52125  
granite gray



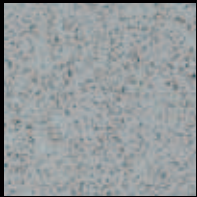
52127  
stone white



52128  
desert dust



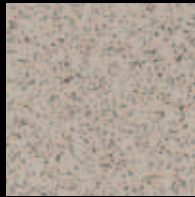
52143  
sandstone tan



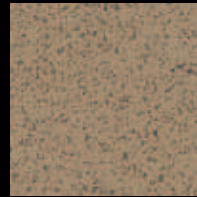
52126  
gravel blue



52161  
charcoal



52122  
pebble gray



52168  
golden fossil



52149  
cocoa brown



52160  
hematite



52144  
coal black



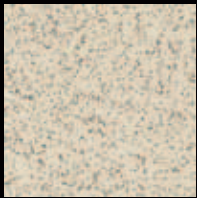
52147  
pumice stone



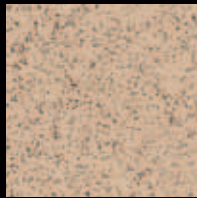
52169  
ammonite



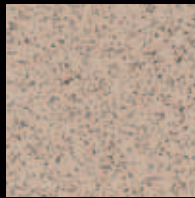
52164  
dark chocolate



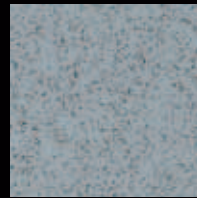
52139  
limestone beige



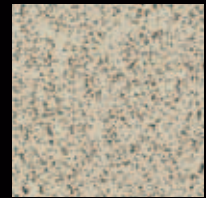
52172  
chamotte



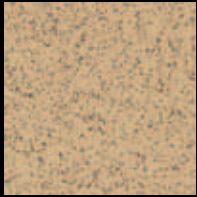
52165  
milky way



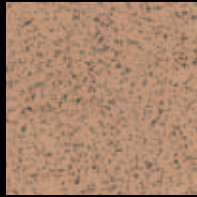
52141  
flagstone blue



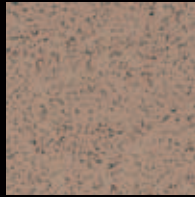
52180  
spanish moss



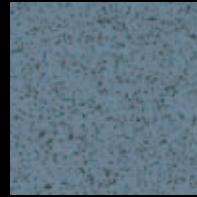
52156  
bamboo yellow



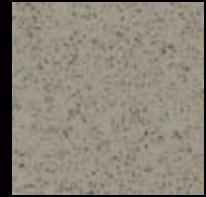
52173  
unfired clay



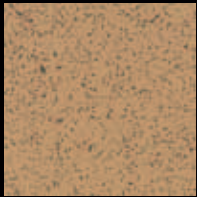
52166  
mochaccino



52135  
mineral dust



52155  
forest moss



52170  
golden bamboo



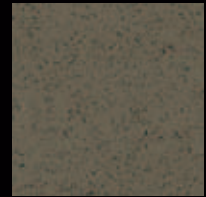
52157  
clay red



52167  
semi sweet



52148  
blue spruce



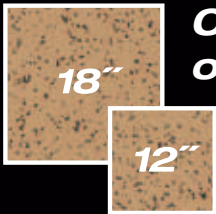
52154  
leaf green

Darker-colored patterns may be susceptible to scratch whitening. These colors may require more frequent maintenance if used in field areas:  
52144, 52147, 52148, 52149, 52154, 52157, 52161, 52164, 52167, 52169, 52179, 52183, 52186, 52189, 52194, 52199.

visit [www.armstrong.com/vct](http://www.armstrong.com/vct) • call 1 877 ARMSTRONG



Stonetex® 52194 lapis, Imperial® Texture 51911 classic white



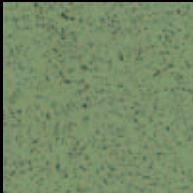
**Choice of Sizes**



52189 roman clay



52179 black jewel orchid



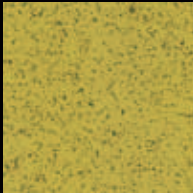
52199 iguana



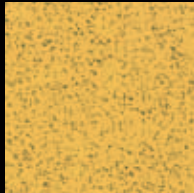
52194 lapis



52186 hermit shale

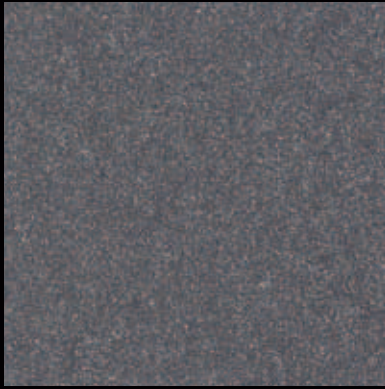


52202 lime rickey



52183 golden honey

VCT  
ARTEFFECTS®



57213  
charcoal stick



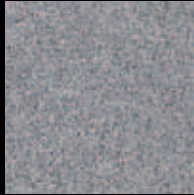
57215  
zinc white



57203  
pastel beige



57205  
silver sable



57216  
intaglio gray



57217  
antique papyrus



57210  
umber green



57200  
parchment beige



57201  
silverpoint



57209  
water garden blue



57202  
canvas beige

Darker-colored patterns may be susceptible to scratch whitening. This color may require more frequent maintenance if used in field areas: 57213.



ARTEFFECTS® 57203 pastel beige, 57210 umber green, 57217 antique papyrus

visit [www.armstrong.com/vct](http://www.armstrong.com/vct) • call 1 877 ARMSTRONG

VCT

**EXCELON® Companion Square®**

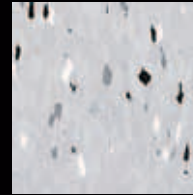


**51983**  
party white

Darker-colored patterns may be susceptible to scratch whitening. This color may require more frequent maintenance if used in field areas: 51970.



**51973**  
mono white



**51972**  
mono gray



**51970**  
mono black



**51977**  
kaleidoscope white



**51974**  
polychrome white

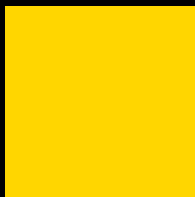


Companion Square® 51983 party white,  
Feature Tile 56806 red I, 56823 yellow II, 56812 blue II

VCT

**EXCELON Feature™ Tile & Strips**

Tile: 56\_\_\_\_ Strips: 50\_\_\_\_



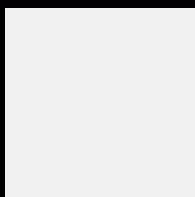
**56823/50823**  
yellow II



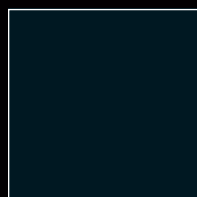
**56806/50806**  
red II



**56812/50812**  
blue II



**56830/50830**  
chalk II



**56790/50790**  
black I

**Available Sizes:**



12" x 12"



2" x 24"



4" x 24"



6" x 24"

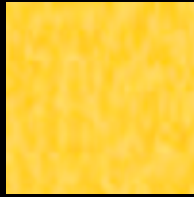
Solid colored floors tend to show scratching and soiling more readily than patterned floors. We recommend not installing Feature Tile as full field installations or in high traffic areas.

VCT

Standard EXCELON® Rave®



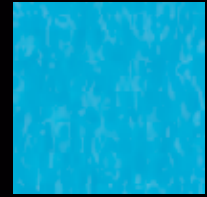
57510  
kickin' kiwi



57509  
lemon lick



57514  
shocking



57512  
bikini blue



57516  
screamin' pumpkin



57513  
vicious violet



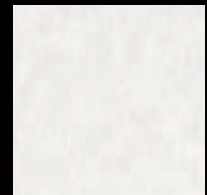
57511  
grabbin' green



57515  
hot lips



57517  
bodacious blue



57518  
white out

Darker-colored patterns may be susceptible to scratch whitening. These colors may require more frequent maintenance if used in field areas: 57511, 57512, 57513, 57514, 57515, 57517.

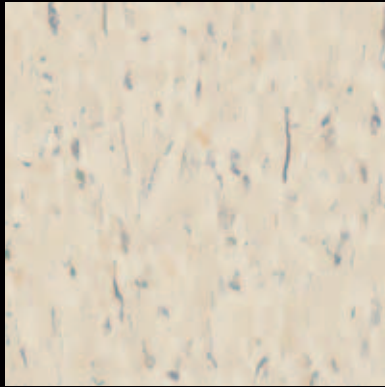


Rave® 57510 kickin' kiwi, 57517 bodacious blue, Imperial® Texture 51800 buttercream yellow, 51811 antique white

visit [www.armstrong.com/vct](http://www.armstrong.com/vct) • call 1 877 ARMSTRONG

VCT

Standard EXCELON® MultiColor™



52520  
faire white



52500  
carnival white



52521  
mint masquerade



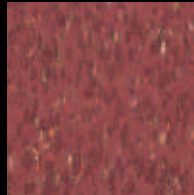
52516  
soleil yellow



52513  
cirque white



52515  
coaster greige



52517  
jester red



52505  
harlequin white



52506  
rodeo fawn



52518  
band blue



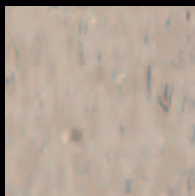
52514  
jubilee white



52523  
animal crackers



52522  
acrobat green



52525  
pie car



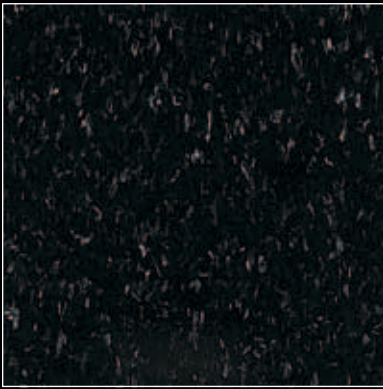
52524  
pageant spice



MultiColor™ 52505 harlequin white,  
52516 soleil yellow

VCT

Standard EXCELON® Imperial® Texture



51910  
classic black



51941  
polar white



51899  
cool white



51811  
antique white



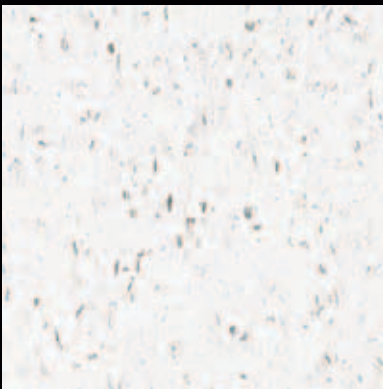
51861  
soft warm gray



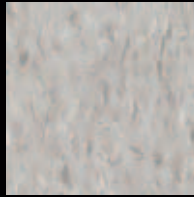
51810  
washed linen



51873  
brushed sand



51911  
classic white



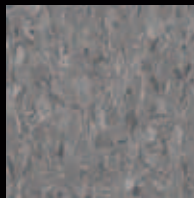
51904  
sterling



51803  
pearl white



57501  
nougat



51915  
charcoal



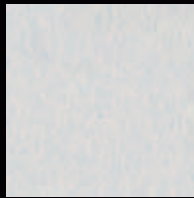
51804  
earthstone greige



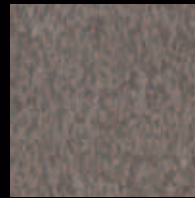
51809  
desert beige



51883  
dusty miller



51860  
soft cool gray



51868  
smokey brown



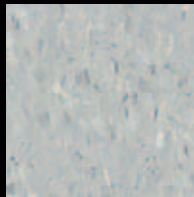
51805  
camel beige



51876  
mint cream



51938  
willow green



51807  
shadow blue



57502  
café latte



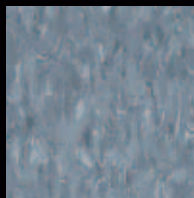
51869  
humus



51872  
tea garden green



51802  
silver green



51916  
dutch delft



57504  
chocolate



51877  
earth green

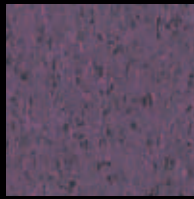




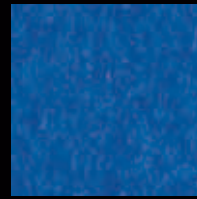
51812  
lemon yellow



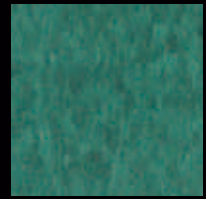
51816  
cherry red



51944  
tyrian purple



51820  
marina blue



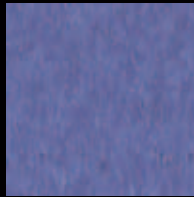
51824  
sea green



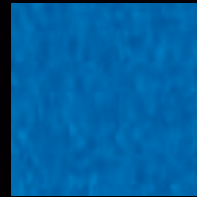
51813  
pumpkin orange



51880  
maraschino



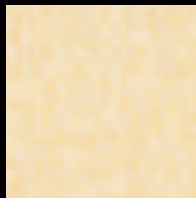
51818  
violet bloom



51821  
caribbean blue



51866  
little green apple



51800  
buttercream yellow



51814  
pomegranate red



51881  
blueberry



57508  
blue dreams



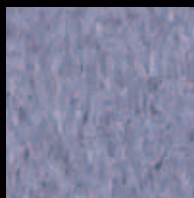
51885  
granny smith



51878  
golden



57503  
bubblegum



51934  
lavender shadow



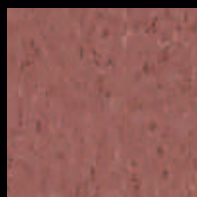
51932  
lunar blue



51884  
greenery



51867  
cantaloupe



51943  
cayenne red



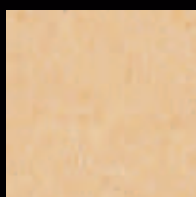
57507  
dusty plum



51882  
serene blue



51947  
basil green



51801  
doeskin peach



51879  
etruscan red



57505  
rose hip



51946  
gentian blue



57506  
colorado stone



51942  
curried caramel



51948  
cinnamon brown



57500  
purple brown



51874  
grayed blue

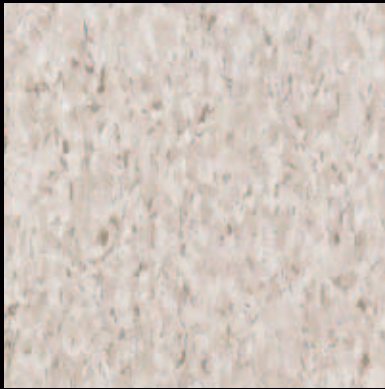


51875  
mid grayed blue

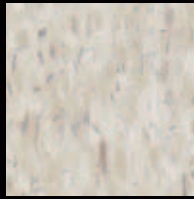
Darker-colored patterns may be susceptible to scratch whitening. These colors may require more frequent maintenance if used in field areas:  
51813, 51814, 51816, 51818, 51820, 51821, 51824, 51868, 51869, 51874, 51879, 51880, 51882, 51884, 51910, 51942, 51943, 51944, 51946, 51947,  
51948, 57500, 57503, 57504, 57505, 57506, 57507.

VCT

Standard EXCELON® Imperial® Texture Classics



51901  
taupe



51836  
shatter white\*



51839  
fortress white\*



51929  
sandy beach



51908  
pewter



51858  
sandrift white\*



51928  
pebble tan



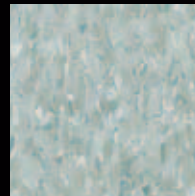
51927  
field gray



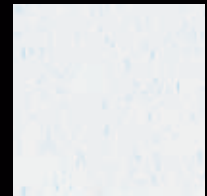
51830  
cottage tan\*



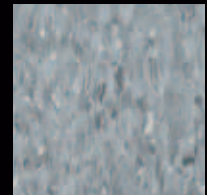
51905  
hazelnut



51906  
teal



51933  
blue cloud



51903  
blue/gray

\*1/8 in. and 3/32 in. stocked. All other patterns stocked in 1/8 in. with 3/32 in. available on a special order basis, minimum order quantity of 1,000 cartons or 45,000 sq. ft. (4,181 m<sup>2</sup>).



Imperial® Texture 51812 lemon yellow, 51821 caribbean blue, 51866 little green apple, 51867 cantaloupe,  
51873 brushed sand, 51880 maraschino, 51915 charcoal.

# RECOMMENDED APPLICATIONS

This chart provides an overview of recommendations by end-use market and for specific spaces. Use these recommendations as a guideline for selecting Armstrong flooring for your application.

## HEALTHCARE/HOSPITAL (a)

Products	Around Swimming Pool	Around Whirlpool/Spa	Cafeteria, Dining Area (e)	Chapel	Commercial Parking Garage Walkway (e)	Computer Training Room	Corridor	Critical/Intensive Care	Data Warehousing	Dialysis (i)	Dry Physical Therapy	Elevator	Emergency Room	Exam/Procedure Room	Gift Shop
<b>BBT®</b>															
STRIATIONS	N	N (3)	R	R	N	H	H	R	N	N (2)	H	R	R	R	R
MIGRATIONS®	N	N (3)	R	R	N	H	H	R	N	N (2)	H	R	R	R	R
<b>VCT</b>															
RAFFIA™	N	N (3)	R	R	N	H	H	R	N	N (2)	H	R	R	R	R
EXCELON® ChromaSpin™	N	N (3)	R	R	N	H	H	R	N	N (2)	H	R	R	R	R
EXCELON® Stonetex®	N	N (3)	R	R	N	H	H	R	N	N (2)	H	R	R	R	R
ARTEFFECTS®	N	N (3)	R	R	N	H	H	R	N	N (2)	H	N	R	R	R
Standard EXCELON® MultiColor™	N	N (3)	R	R	N	H	H	R	N	N (2)	H	R	R	R	R
Standard EXCELON® Imperial® Texture	N	N (3)	R	R	N	H	H	R	N	N (2)	H	R	R	R	R
Standard EXCELON® Imperial® Texture Rave®	N	N (3)	R	R	N	H	H	R	N	N (2)	H	R	R	R	R
EXCELON® Companion Square®	N	N (3)	R	R	N	H	H	R	N	N (2)	H	R	R	R	R
EXCELON® Feature™ Tile & Strips (d)	N	N (3)	R	R	N	H	H	R	N	N (2)	R	R	R	R	R

## EDUCATION/INSTITUTIONAL

Products	Around Swimming Pool	Auditorium	Cafeteria, Dining Area (e)	Classroom/Lecture Hall	Commercial Parking Garage Walkway (e)	Computer Repair Area	Computer Training Room	Corridor	Data Warehousing	Dormitory Room	Elevator	Entryway/Foyer (i)	Food Service Area
<b>BBT®</b>													
STRIATIONS	N	H	R	H	N	N	H	H	N	H	R	N	R (j)
MIGRATIONS®	N	H	R	H	N	N	H	H	N	H	R	N	R (j)
<b>VCT</b>													
RAFFIA™	N	H	R	H	N	N	H	H	N	H	R	N	R (j)
EXCELON® ChromaSpin™	N	H	R	H	N	N	H	H	N	H	R	N	R (j)
EXCELON® Stonetex®	N	H	R	H	N	N	H	H	N	H	R	N	R (j)
ARTEFFECTS®	N	R	R	R	N	N	H	H	N	R	N	N	R (j)
Standard EXCELON® MultiColor™	N	H	R	H	N	N	H	H	N	H	R	N	R (j)
Standard EXCELON® Imperial® Texture	N	H	R	H	N	N	H	H	N	H	R	N	R (j)
Standard EXCELON® Imperial® Texture Rave®	N	H	R	H	N	N	H	H	N	H	R	N	R (j)
EXCELON® Companion Square®	N	H	R	H	N	N	H	H	N	H	R	N	R (j)
EXCELON® Feature™ Tile & Strips (d)	N	H	R	R	N	N	H	R	N	H	R	N	R (j)

**NOTES:**

- Numerical footnotes apply to the space requirements.
- Alpha footnotes apply to the product's suitability for the space. The numerical and alpha footnotes are consistent across all Recommended Applications Charts [e.g., (a) is the same footnote for linoleum as it is for vinyl, etc.]. Depending upon the category, product and space requirements, some footnotes may not appear.
- In addition to spaces listed on these charts:
  - Armstrong floors may be used on stair steps, risers and landings. A manufactured slip-retardant nosing should always be applied on steps.
  - Armstrong floors are **not recommended** for exterior use, for interior spaces where pointed spike golf or track shoes will be used, or in areas where the floor will be subjected to unusually concentrated static or dynamic loads.
  - Armstrong floors **should not be used** as wall covering or wall surfacing.

- (a) In most cases veterinary applications are similar
- (b) Only operating rooms not requiring conductive flooring
- (c) Only recommended for accents and borders
- (e) Armstrong floors are not recommended for commercial kitchens and commercial food processing areas, including behind fast-food counters
- (g) Most Armstrong floors are not recommended for heavy industrial areas
- (j) No standing water walk-off mats required
- (l) Not recommended in laboratories that require special decontamination procedures on surfaces, including floors

- (1) Aseptic Area - Hygienic conditions are of critical importance
- (2) Water Resistance - Wet area installation is needed (flash coating, sealed seams)
- (3) Slip Retardance - A more secure walking surface is required
- (4) Surface Unevenness - The flooring surface should not interfere with chair or cart movements
- (5) Static control flooring is normally required in this area
- (6) Not recommended in areas that require electrostatic discharge control

**H = Highly Recommended**

The best flooring choice(s) for the space.

**R = Recommended**

Flooring choice(s) that are suitable for the space.

**N = Not Recommended**

Flooring that should not be used for the space.

• The ratings of H, R or N are based on an evaluation of the performance, cost and aesthetic requirements of the space.

	Hydro Physical Therapy	Hyperbaric Room	Labor Delivery Room	Laboratory	Lavatory	Lobby	Nurse's Station	Office/Admin./Conf. Room	Operating Room (b)	Patient Room	Pharmacy	Ramped Corridor (Dry)	Scrub Area	Stairway/Landing	Staff Lounge	Telecommunications Center	Utility/Storage Room	Waiting Room
	N (3)	N (6)	N	R (I)	R	R	H	R	N (1)	R	H	N (3)	N (1)	R	R	N	H	H
	N (3)	N (6)	N	R (I)	R	R	H	R	N (1)	R	H	N (3)	N (1)	R	R	N	H	H
	N (3)	N (6)	N	R (I)	R	R	H	R	N (1)	R	H	N (3)	N (1)	R	R	N	R	R
	N (3)	N (6)	N	R (I)	R	R	H	R	N (1)	R	H	N (3)	N (1)	R	R	N	R	R
	N (3)	N (6)	N	R (I)	R	R	H	R	N (1)	R	H	N (3)	N (1)	R	R	N	H	R
	N (3)	N (6)	N	R (I)	R	R	H	R	N (1)	R	H	N (3)	N (1)	R	R	N	H	R
	N (3)	N (6)	N	R (I)	R	R	H	R	N (1)	R	H	N (3)	N (1)	R	R	N	H	R
	N (3)	N (6)	N	R (I)	R	R	H	R	N (1)	R	H	N (3)	N (1)	R	R	N	R	R
	N (3)	N (6)	N	R (I)	R	R	H	R	N (1)	R	H	N (3)	N (1)	R	R	N	R	R

	Gymnasium	Laboratory	Lavatory	Library	Locker Room (no spikes)	Multipurpose/Cafeterium	Office/Administrative/Conference Room	Ramped Corridor (Dry)	Shower/Shower Room	Stairway/Landing	Teacher's Lounge	Telecommunications Center	Utility/Storage Area
	H	R (I)	R	R	N (3)	H	R	N (3)	N (3)	R	H	N	H
	H	R (I)	R	R	N (3)	H	R	N (3)	N (3)	R	H	N	H
	H	R (I)	R	R	N (3)	H	R	N (3)	N (3)	R	H	N	H
	H	R (I)	R	R	N (3)	H	R	N (3)	N (3)	R	H	N	H
	H	R (I)	R	R	N (3)	H	R	N (3)	N (3)	R	H	N	H
	H	R (I)	R	R	N (3)	H	R	N (3)	N (3)	R	H	N	H
	H	R (I)	R	R	N (3)	H	R	N (3)	N (3)	R	H	N	H
	H	R (I)	R	R	N (3)	H	R	N (3)	N (3)	R	H	N	H
	H	R (I)	R	R	N (3)	H	R	N (3)	N (3)	R	H	N	H
	H	R (I)	R	R	N (3)	H	R	N (3)	N (3)	R	H	N	H

# RECOMMENDED APPLICATIONS

## HOSPITALITY

Products	Around Swimming Pool	Around Whirlpool/Spa	Commercial Parking Garage/Walkway (6)	Corridor	Dance Floor	Dining Area (e)	Elevator	Entryway/Foyer (l)	Exercise Room
<b>BBT®</b>									
STRIATIONS	N	N (3)	N	R	R	R	R	N	R
MIGRATIONS®	N	N (3)	N	R	R	R	R	N	R
<b>VCT</b>									
RAFFIA™	N	N (3)	N	R	R	R	R	N	R
EXCELON® ChromaSpin™	N	N (3)	N	R	R	R	R	N	R
EXCELON® Stonetex®	N	N (3)	N	R	R	R	R	N	R
ARTEFFECTS®	N	N (3)	N	R	R	R	R	N	R
Standard EXCELON® MultiColor™	N	N (3)	N	R	R	R	R	N	R
Standard EXCELON® Imperial® Texture	N	N (3)	N	R	R	R	R	N	R
Standard EXCELON® Imperial® Texture Rave®	N	N (3)	N	R	R	R	R	N	R
EXCELON® Companion Square®	N	N (3)	N	R	R	R	R	N	R
EXCELON® Feature™ Tile & Strips (d)	N	N (3)	N	R	R	R	R	N	R

## RETAIL/STORES

Products	Automobile Showroom	Checkout/Cash Wrap	Computer Repair Area	Commercial Kitchen	Entryway/Foyer (l)	Fast Food Counter (behind)	Fast Food Counter (front)	Floral Area/Garden Center	Food Service (e)
<b>BBT®</b>									
STRIATIONS	R	H	N	N	N	N	H	R	H (i)
MIGRATIONS®	R	H	N	N	N	N	H	R	H (i)
<b>VCT</b>									
RAFFIA™	R	H	N	N	N	N	H	H	H (i)
EXCELON® ChromaSpin™	R	H	N	N	N	N	H	H	H (i)
EXCELON® Stonetex®	R	H	N	N	N	N	H	H	H (i)
ARTEFFECTS®	R	R	N	N	N	N	H	H	H (i)
Standard EXCELON® MultiColor™	R	H	N	N	N	N	H	R	H (i)
Standard EXCELON® Imperial® Texture	R	H	N	N	N	N	H	H	H (i)
Standard EXCELON® Imperial® Texture Rave®	R	H	N	N	N	N	H	H	H (i)
EXCELON® Companion Square®	R	H	N	N	N	N	H	H	H (i)
EXCELON® Feature™ Tile & Strips (d)	R	R	N	N	N	N	H	H	R (i)

**NOTES:**

- Numerical footnotes apply to the space requirements.
- Alpha footnotes apply to the product's suitability for the space. The numerical and alpha footnotes are consistent across all Recommended Applications Charts [e.g., (a) is the same footnote for linoleum as it is for vinyl, etc.]. Depending upon the category, product and space requirements, some footnotes may not appear.
- In addition to spaces listed on these charts:
  - Armstrong floors may be used on stair steps, risers and landings. A manufactured slip-retardant nosing should always be applied on steps.
  - Armstrong floors are **not recommended** for exterior use, for interior spaces where pointed spike golf or track shoes will be used, or in areas where the floor will be subjected to unusually concentrated static or dynamic loads.
  - Armstrong floors **should not be used** as wall covering or wall surfacing.

- (a) In most cases veterinary applications are similar
- (b) Only operating rooms not requiring conductive flooring
- (c) Only recommended for accents and borders
- (e) Armstrong floors are not recommended for commercial kitchens and commercial food processing areas, including behind fast-food counters
- (g) Most Armstrong floors are not recommended for heavy industrial areas
- (i) No standing water walk-off mats required
- (j) Not recommended in laboratories that require special decontamination procedures on surfaces, including floors

- (1) Aseptic Area - Hygienic conditions are of critical importance
- (2) Water Resistance - Wet area installation is needed (flash coving, sealed seams)
- (3) Slip Retardance - A more secure walking surface is required
- (4) Surface Unevenness - The flooring surface should not interfere with chair or cart movements
- (5) Static control flooring is normally required in this area
- (6) Not recommended in areas that require electrostatic discharge control

**H = Highly Recommended**

The best flooring choice(s) for the space.

**R = Recommended**

Flooring choice(s) that are suitable for the space.

**N = Not Recommended**

Flooring that should not be used for the space.

- The ratings of H, R or N are based on an evaluation of the performance, cost and aesthetic requirements of the space.

	Guest Bathroom (i)	Guest Room	Lobby	Lounge	Stairway/Landing	Vending Area (i)
	R	R	R	R	R	R
	R	R	R	R	R	R
	R	R	R	R	R	R
	R	R	R	R	R	R
	R	R	R	R	R	R
	R	R	R	R	R	R
	R	R	R	R	R	R
	R	R	R	R	R	R
	R	R	R	R	N	R

	Frozen Food	Indoor Mall Common Area	Laundromat	Meat/Seafood Counter (behind)	Pet Shop	Photo Processing	Produce Area	Sales Floor - Department Store	Sales Floor - Grocery	Sales Floor - Mass Merchant
	H	N	R	N	R	H	R	H	H	H
	H	N	R	N	R	H	R	H	H	H
	H	N	R	N	R	H	R	H	H	H
	H	N	R	N	R	H	R	H	H	H
	H	N	R	N	R	H	R	H	H	H
	H	N	R	N	R	H	R	H	H	H
	H	N	R	N	R	H	R	H	H	H
	H	N	R	N	R	H	R	H	H	H
	H	N	R	N	R	H	R	H	H	H
	R	N	R	N	R	H	R	R	R	R

# RECOMMENDED APPLICATIONS

## ASSISTED LIVING/MILITARY HOUSING/LIGHT COMMERCIAL

Products	Activity Room/ Common Area	Beauty Salon/ Barber Shop	Corridor	Daycare Area	Dining Area (e)	Doctor/Dentist Office	Residence Bathroom (i)	Residence Kitchen (e)	Residence Room/ Barrack
<b>BBT®</b>									
STRIATIONS	H	H	H	H	R	R	R	R (e)	R
MIGRATIONS®	H	H	H	H	R	R	R	R (e)	R
<b>VCT</b>									
RAFFIA™	H	H	H	H	R	R	R	R (e)	R
EXCELON® ChromaSpin™	H	H	H	H	R	R	R	R (e)	R
EXCELON® Stonetex®	H	H	H	H	R	R	R	R (e)	R
ARTEFFECTS®	R	R	H	R	R	R	R	R (e)	R
Standard EXCELON® MultiColor™	H	H	H	H	R	R	R	R (e)	R
Standard EXCELON® Imperial® Texture	H	H	H	H	R	R	R	R (e)	R
Standard EXCELON® Imperial® Texture Rave®	H	H	H	H	R	R	R	R (e)	R
EXCELON® Companion Square®	H	H	H	H	R	R	R	R (e)	R
EXCELON® Feature™ Tile & Strips (d)	H	H	H	H	R	R	R	R (e)	R

## OFFICE

Products	Cafeteria/Dining Area (e)	Commercial Parking Garage/Walkway (e)	Computer Repair Area	Computer Training Room	Corridor	Data Warehousing	Elevator	Entryway/Foyer (i)	Lavatory
<b>BBT®</b>									
STRIATIONS	R	N	N	H	H	N	R	N	R
MIGRATIONS®	R	N	N	H	H	N	R	N	R
<b>VCT</b>									
RAFFIA™	R	N	N	H	H	N	R	N	R
EXCELON® ChromaSpin™	R	N	N	H	H	N	R	N	R
EXCELON® Stonetex®	R	N	N	H	H	N	R	N	R
ARTEFFECTS®	R	N	N	H	H	N	N	N	R
Standard EXCELON® MultiColor™	R	N	N	H	H	N	R	N	R
Standard EXCELON® Imperial® Texture	R	N	N	H	H	N	R	N	R
Standard EXCELON® Imperial® Texture Rave®	R	N	N	H	H	N	R	N	R
EXCELON® Companion Square®	R	N	N	H	H	N	R	N	R
EXCELON® Feature™ Tile & Strips (d)	R	N	N	H	H	N	R	N	R

**NOTES:**

- Numerical footnotes apply to the space requirements.
- Alpha footnotes apply to the product's suitability for the space. The numerical and alpha footnotes are consistent across all Recommended Applications Charts [e.g., (a) is the same footnote for linoleum as it is for vinyl, etc.]. Depending upon the category, product and space requirements, some footnotes may not appear.
- In addition to spaces listed on these charts:
  - Armstrong floors may be used on stair steps, risers and landings. A manufactured slip-retardant nosing should always be applied on steps.
  - Armstrong floors are not recommended for exterior use, for interior spaces where pointed spike golf or track shoes will be used, or in areas where the floor will be subjected to unusually concentrated static or dynamic loads.
  - Armstrong floors should not be used as wall covering or wall surfacing.

- (a) In most cases veterinary applications are similar
- (b) Only operating rooms not requiring conductive flooring
- (c) Only recommended for accents and borders
- (e) Armstrong floors are not recommended for commercial kitchens and commercial food processing areas, including behind fast-food counters
- (g) Most Armstrong floors are not recommended for heavy industrial areas
- (i) No standing water walk-off mats required
- (j) Not recommended in laboratories that require special decontamination procedures on surfaces, including floors

- (1) Aseptic Area - Hygienic conditions are of critical importance
- (2) Water Resistance - Wet area installation is needed (flash coving, sealed seams)
- (3) Slip Retardance - A more secure walking surface is required
- (4) Surface Unevenness - The flooring surface should not interfere with chair or cart movements
- (5) Static control flooring is normally required in this area
- (6) Not recommended in areas that require electrostatic discharge control



**H = Highly Recommended**

The best flooring choice(s) for the space.

**R = Recommended**

Flooring choice(s) that are suitable for the space.

**N = Not Recommended**

Flooring that should not be used for the space.

- The ratings of H, R or N are based on an evaluation of the performance, cost and aesthetic requirements of the space.

## TRANSPORTATION

Products	Airport/Railway/ Bus Terminal	City/Convention Center	Museum/Cultural Center
<b>BBT®</b>			
STRIATIONS	N	N	H
MIGRATIONS®	N	N	H
<b>VCT</b>			
RAFFIA™	N	N	H
EXCELON® ChromaSpin™	N	N	H
EXCELON® Stonetex®	N	N	H
ARTEFFECTS®	N	N	R
Standard EXCELON® MultiColor™	N	N	H
Standard EXCELON® Imperial® Texture	N	N	H
Standard EXCELON® Imperial® Texture Rave®	N	N	H
EXCELON® Companion Square®	N	N	H
EXCELON® Feature™ Tile & Strips (d)	N	N	H

	Lobby	Lunchroom (e)	Office/Administration/ Conference Room	Stairway/Landing	Telecommunications Center	Utility/Storage Rooms
	R	H	R	R	N	H
	R	H	R	R	N	H
	R	H	R	R	N	H
	R	H	R	R	N	H
	R	R	R	R	N	R
	R	H	R	R	N	H
	R	H	R	R	N	H
	R	H	R	R	N	H
	R	H	R	R	N	H
	R	H	R	N	N	R

# RECOMMENDED APPLICATIONS

## LIGHT INDUSTRIAL (g)

Products	Clean Room	Computer Lab Repair Area	Computer Training Room	Data Warehousing	Electronic Testing Lab	Electronics Manufacturing	Environmental Conditioning Unit	Office/Conference Room	Photo Processing
<b>BBT®</b>									
STRIATIONS	N	N	H	N	N (6)	N (6)	N	R	H
MIGRATIONS®	N	N	H	N	N (6)	N (6)	N	R	H
<b>VCT</b>									
RAFFIA™	N	N	H	N	N (6)	N (6)	N	R	H
EXCELRON® ChromaSpin™	N	N	H	N	N (6)	N (6)	N	R	H
EXCELRON® Stonetex®	N	N	H	N	N (6)	N (6)	N	R	H
ARTEFFECTS®	N	N	H	N	N (6)	N (6)	N	R	H
Standard EXCELRON® MultiColor™	N	N	H	N	N (6)	N (6)	N	R	H
Standard EXCELRON® Imperial® Texture	N	N	H	N	N (6)	N (6)	N	R	H
Standard EXCELRON® Imperial® Texture Rave®	N	N	H	N	N (6)	N (6)	N	R	H
EXCELRON® Companion Square®	N	N	H	N	N (6)	N (6)	N	R	H
EXCELRON® Feature™ Tile & Strips (d)	N	N	H	N	N (6)	N (6)	N	R	H

**NOTES:**

- Numerical footnotes apply to the space requirements.
- Alpha footnotes apply to the product's suitability for the space. The numerical and alpha footnotes are consistent across all Recommended Applications Charts [e.g., (a) is the same footnote for linoleum as it is for vinyl, etc.]. Depending upon the category, product and space requirements, some footnotes may not appear.
- In addition to spaces listed on these charts:
  - Armstrong floors may be used on stair steps, risers and landings. A manufactured slip-retardant nosing should always be applied on steps.
  - Armstrong floors are not recommended for exterior use, for interior spaces where pointed spike golf or track shoes will be used, or in areas where the floor will be subjected to unusually concentrated static or dynamic loads.
  - Armstrong floors should not be used as wall covering or wall surfacing.

- (a) In most cases veterinary applications are similar
- (b) Only operating rooms not requiring conductive flooring
- (d) Only recommended for accents and borders
- (e) Armstrong floors are not recommended for commercial kitchens and commercial food processing areas, including behind fast-food counters
- (g) Most Armstrong floors are not recommended for heavy industrial areas
  - (i) No standing water walk-off mats required
  - (l) Not recommended in laboratories that require special decontamination procedures on surfaces, including floors

- (1) Aseptic Area – Hygienic conditions are of critical importance
- (2) Water Resistance – Wet area installation is needed (flash coving, sealed seams)
- (3) Slip Retardance – A more secure walking surface is required
- (4) Surface Unevenness – The flooring surface should not interfere with chair or cart movements
- (5) Static control flooring is normally required in this area
- (6) Not recommended in areas that require electrostatic discharge control

**H = Highly Recommended**

The best flooring choice(s) for the space.

**R = Recommended**

Flooring choice(s) that are suitable for the space.

**N = Not Recommended**

Flooring that should not be used for the space.

- The ratings of H, R or N are based on an evaluation of the performance, cost and aesthetic requirements of the space.

	Production Laboratory	Research Laboratory	Small Parts Assembly	Sterile Packaging	Telecommunications Center
	R (I)	R (I)	R	R	N
	R (I)	R (I)	R	R	N
	R (I)	R (I)	R	R	N
	R (I)	R (I)	R	R	N
	R (I)	R (I)	R	R	N
	R (I)	R (I)	R	R	N
	R (I)	R (I)	R	R	N
	R (I)	R (I)	R	R	N
	R (I)	R (I)	R	R	N
	R (I)	R (I)	R	R	N

# COMPARATIVE DATA

Products	Size Options	Overall Thickness (nominal) (1)	Wear Layer (nominal) (1)	Static Load Limit PSI (kg/cm <sup>2</sup> ) (2, 2a, 2b)	Durability (3)	Maintainability (3)	Resilience (3)	Reference Specs (4)	Fire Test Data (5) ASTM E 648 Flooring Radiant Panel Critical Radiant Flux – 0.45 watts/cm <sup>2</sup> or more, Class I ASTM E 662 Smoke Chamber Specific Optical Smoke Density – 450 or less
<b>BBT®</b>									
<b>STRIATIONS MIGRATIONS®</b>	12 in. x 24 in. 12 in. x 12 in.	1/8 in. (3.2 mm)	1/8 in. (3.2 mm)	250 (17.6)	VG	G	G	ASTM F 1066, Class 2 through-pattern Binder system is not described by current ASTM flooring specifications	Meets
<b>VCT</b>									
<b>RAFFIA™</b>	12 in. x 24 in.	1/8 in. (3.2 mm)	1/8 in. (3.2 mm)	125 (8.8)	VG	G	G	International Standards ASTM F 1066, Class 2 through-pattern ISO 10595, Type II	Meets
<b>EXCELON® ChromaSpin™</b>	12 in. x 12 in.	1/8 in. (3.2 mm)	1/8 in. (3.2 mm)	125 (8.8)	VG	G	G	International Standards ASTM F 1066, Class 2 through-pattern ISO 10595, Type II	
<b>EXCELON® Stonetex®</b>	12 in. x 12 in. 18 in. x 18 in.	1/8 in. (3.2 mm)	1/8 in. (3.2 mm)	125 (8.8)	VG	G	G	International Standards ASTM F 1066, Class 2 through-pattern ISO 10595, Type II	
<b>ARTEFFECTS®</b>	12 in. x 12 in.	1/8 in. (3.2 mm)	1/8 in. (3.2 mm)	125 (8.8)	G	G	G	International Standards ASTM F 1066, Class 3 – surface pattern ISO 10595, Type III	
<b>Standard EXCELON® MultiColor™</b>	12 in. x 12 in.	1/8 in. (3.2 mm)	1/8 in. (3.2 mm)	125 (8.8)	VG	G	G	International Standards ASTM F 1066, Class 2 through-pattern ISO 10595, Type II	
<b>Standard EXCELON® Imperial® Texture</b>	12 in. x 12 in.	1/8 in. (3.2 mm) 3/32 in. (2.4 mm)	1/8 in. (3.2 mm) 3/32 in. (2.4 mm)	125 (8.8)	VG G (3/32)	G	G	International Standards ASTM F 1066, Class 2 through-pattern ISO 10595, Type II	
<b>Standard EXCELON® Imperial® Texture Rave®</b>	12 in. x 12 in.	1/8 in. (3.2 mm)	1/8 in. (3.2 mm)	125 (8.8)	VG	G	G	International Standards ASTM F 1066, Class 2 through-pattern ISO 10595, Type II	
<b>EXCELON® Companion Square®</b>	12 in. x 12 in.	1/8 in. (3.2 mm)	1/8 in. (3.2 mm)	125 (8.8)	VG	G	G	International Standards ASTM F 1066, Class 2 through-pattern ISO 10595, Type II	
<b>Feature™ Tile &amp; Strips (6)</b>	12 in. x 12 in. 2 in. x 24 in. 4 in. x 24 in. 6 in. x 24 in.	1/8 in. (3.2 mm)	1/8 in. (3.2 mm)	125 (8.8)	VG	F (6)	G	International Standards ASTM F 1066, Class 1 – solid color ISO 10595, Type I	

- Overall and wear layer thicknesses are nominal and subject to normal manufacturing variances.
- PSI: lbs./sq. in.
  - Static Load Limit per ASTM F 970
  - Static Load Limit per ASTM F 970 modified by specifying a higher load on a smaller diameter tip. All other test conditions are standard.
- Subjective ratings (Excellent, Very Good, Good, Fair) are in relation to other Armstrong® commercial resilient floors. Ratings are not directly related to any one test. They are broadly based on tests and experience of Armstrong R & D under varying conditions and circumstances. These ratings should NOT be used for comparison to ratings used by other manufacturers to rank their own products.
- Reference Specifications: Armstrong products are manufactured to meet or exceed specification requirements.
- Numerical flammability ratings alone may not define product performance under actual fire conditions. These ratings are provided only for use in the selection of products to meet specified limits.
- Feature Tile & Strips are recommended only for decorative borders and accents.

Sustainability Facts	BBT® MIGRATIONS® STRIATIONS	VCT EXCELON® Stonetex®, RAFFIA™, ChromaSpin™, ARTEFFECTS®, Standard EXCELON® Imperial® Texture Rave®, Standard EXCELON® Imperial® Texture Classics®, Standard EXCELON® MultiColor™, EXCELON® Feature™ Tile & Strips EXCELON® Companion Square®, Standard EXCELON® Imperial® Texture®††
	BBT®	VCT
<b>Certified Low Emitting LEED® EQ4.3</b> Indoor Air Quality <b>Recycled Content LEED MR4.0</b> Pre-consumer <b>Regional Materials LEED MR5.0*</b> <b>Rapidly Renewable Materials LEED MR 6.0</b> <b>Non-PVC BioBased</b>	✓ 10% Jackson, MS 2% ✓	✓ 1% Kankakee, IL*, Southgate, CA†, Jackson, MS‡ N/A N/A
<b>Adhesives</b> <b>Certified Low Emitting LEED EQ4.1</b>	✓	✓
<b>FloorScore™ Certified to CDPH Standard Method V1.1-2010</b>	✓	✓
<b>Green Guide for Healthcare GGHC IEQ4.3</b>	✓	✓
<b>Collaborative for High Performance Schools CHPS-IEQ2.2 &amp; LABS-21 IEQ4.3</b>	✓	✓
<b>U.S. Green Building Council Member</b>	✓	✓
<b>Canada Green Building Council Member</b>	✓	✓
<b>SmartSample Program</b>	✓	✓

Headquartered in USA  
International Locations  
\*Depends on project location

## ADHESIVES AND INSTALLATION

Products	Adhesives Depend on Substrate					Moisture Limits		pH Readings
	Wood	Concrete	Ceramic, Terrazo, Marble	Metal	Existing Resilient Floor	MVER Calcium Chloride Test (lbs./1000 sq. ft./24 hrs.)	Relative Humidity In-Situ Probe	
<b>BBT®</b>								
STRIATIONS MIGRATIONS®	S-521 or S-700	S-521 or S-700	S-521 or S-700	S-700	S-521 Tile-On System	5 7 when using S-521	80 90 when using S-521	5-9 5-11 for S-521
<b>VCT</b>								
RAFFIA™ ChromaSpin™ ARTEFFECTS® Standard EXCELON®, Imperial® Texture, Rave®, MultiColor™ EXCELON Stonetex®, Companion Square®, Feature™ Tile and Strips	S-515, S-521, S-700 or S-750	S-515, S-521, S-700 or S-750	S-515, S-521, S-700 or S-750	S-700	S-515, S-521 or S-750 Tile-On System	5 7 when using S-515 or S-521	80 90 when using S-515 or S-521	5-9 5-11 for S-515 or S-521

## MAINTENANCE

Products	Cleaners	Sealers	Polishes	Maintenance Options			
				Polish	Low Maintenance Options		
					No Polish Spray Buff	No Polish Dry Buff	No Polish No Buff
<b>BBT®</b>							
STRIATIONS MIGRATIONS®	S-401, S-485	S-495	S-403, S-480	✓	Not recommended	Not recommended	Not recommended
<b>VCT</b>							
RAFFIA™ ChromaSpin™ ARTEFFECTS® Standard EXCELON®, Imperial® Texture, Rave®, MultiColor™ EXCELON Stonetex®, Companion Square®, Feature™ Tile and Strips	S-401, S-485	S-495	S-403, S-480	✓	Not recommended	Not recommended	Not recommended

# SPECIFICATION DATA – BioBased Tile® (BBT®)

## STRIATIONS BBT® MIGRATIONS®

### Specification Data

#### Material

A composition of polyester resin, limestone and pigments..

#### Construction and Colors

Color and pattern are dispersed uniformly throughout the thickness of the material. Color pigments are insoluble in water and resistant to cleaning agents and light.

#### Size

MIGRATIONS® 12 in. x 12 in. (305 mm x 305 mm) tile  
STRIATIONS™ 12 in. x 24 in. (305 mm x 610 mm) tile

#### Gauge (nominal thickness)

1/8 in. (3.2 mm)

#### Limitations

STRIATIONS and MIGRATIONS should **not** be used in the following areas:

- Hospital operating rooms.
- Heavy industrial and exterior areas.
- Commercial kitchens and commercial food processing areas.
- Where pointed spikes such as golf or track shoes will be used.
- Where the floor will be subjected to unusually concentrated static or dynamic loads.

**NOTE:** Concentrated static and dynamic loads such as hospital beds, roll-out bleachers, portable x-ray machines, etc., may visibly damage resilient as well as other types of floor coverings. For questions regarding product suitability and detailed instructions for floor preparation and installation in these applications, please contact Armstrong.

#### Suitable for Application Over

- Concrete, terrazzo, and other dry, structurally sound monolithic subfloors, which are suspended, on grade, or below grade.
- Suspended wood subfloor construction with approved wood underlayment, and a minimum of 18 in. (45.72 cm) well-ventilated air space below.
- Most metal floors and most existing single-layer resilient floors on approved underlayment.
- Radiant-heated subfloors with a maximum surface temperature of 85° F (29° C).

#### Unsuitable for Application Over

- Subfloors where excessive moisture or alkali is present.
- Sleeper-constructed wood subfloors, on grade or below grade.
- Lightweight aggregate concrete subfloors having a density of less than 90 lbs. per cu. ft. (1442 kg/m<sup>3</sup>) or cellular concrete having a plastic (wet) density less than 100 lbs. per cu. ft. (1602 kg/m<sup>3</sup>) [94 lbs. per cu. ft. (1506 kg/m<sup>3</sup>) dry weight], or concrete having a compressive strength of less than 3500 psi (24 MPa). Concrete slabs with heavy static and/or dynamic loads should have higher design strengths and densities calculated to accommodate such loads.

Concrete curing agents, sealers, hardeners, or parting agents should be removed.

#### TECHNICAL DATA

##### Shipping Weight

12 in. x 12 in. – 63 lbs./carton (29 kg)  
12 in. x 24 in. – 61 lbs./carton (28 kg)

##### Packaging

12 in. x 12 in. – Tiles per carton – 45 (45 sq. ft.)  
12 in. x 24 in. – Tiles per carton – 22 (44 sq. ft.)

##### Gloss (typical value)

MIGRATIONS: 60 degrees specular: 9-18  
STRIATIONS: 60 degrees specular: 5-15

#### Reference Specifications

ASTM F 1066, Class 2 – through pattern.

Meets the requirements for size, squareness, thickness, indentation, impact, deflection, resistance to chemicals and resistance to heat.

**NOTE:** As STRIATIONS' and MIGRATIONS' unique binder system does not contain polyvinyl chloride resins, plasticizers and stabilizers, it does not meet the F 1066 specification's Materials requirements.

#### Static Load Limit

ASTM F 970

250 lbs./sq. in. (17.6 kg/cm<sup>2</sup>)

**NOTE:** Floors should be protected from sharp-point loads and heavy static loads. High-heeled traffic (1000 psi (70.3 kg/cm<sup>2</sup>) or more) may visibly damage wood, resilient and other floor coverings.

#### Comparative Subjective Property Ratings

Durability – Very Good

Maintainability – Good

Resilience – Good

Subjective ratings (excellent, very good, good, fair) are in relation to other Armstrong commercial resilient floors. Ratings are not directly related to any one test. They are broadly based on tests and experience of Armstrong Research and Development under varying conditions and circumstances. These ratings should not be used for comparison to ratings used by other manufacturers to rank their own products.

#### Fire Test Data

ASTM E 648 Flooring Radiant Panel Critical Radiant Flux – 0.45 watts/cm<sup>2</sup> or more – Class I

ASTM E 662 Smoke Chamber Specific Optical Smoke

Density – 450 or less

CAN/ULC – S102.2-07 MIGRATIONS only

Flame Spread Rating – 0

Smoke Developed Classification – 25

Numerical flammability ratings alone may not define the performance of the product under actual fire conditions. These ratings are provided only for use in the selection of products to meet the specified limits.

#### INSTALLATION

##### Job Conditions

Subfloors/underlayments shall be dry, clean, and smooth. They shall be free from paint, varnish, solvents, wax, oil, existing adhesive residue, or other foreign matter.

For more detailed requirements of concrete, wood and metal subfloors, as well as wood and trowelable underlayments, refer to the [Armstrong Guaranteed Installation Systems](#) manual, F-5061 or to the installation instructions at [armstrong.com](#).

Moisture testing must be performed on all concrete slabs regardless of their age or grade level including areas where resilient flooring has already been installed. Moisture Vapor Emission Rate (MVER) using Calcium Chloride (ASTM F 1869) and/or percent relative humidity (ASTM F 2170) tests must be conducted. Following are Armstrong's maximum allowable moisture limits:

When using S-700 Adhesive, moisture test results shall not exceed a MVER of 5.0 lbs./1000 sq. ft./24 hours per ASTM F 1869 and/or 80% RH per ASTM F 2170.

When using S-521 Adhesives, moisture test results shall not exceed a MVER of 7.0 lbs./1000 sq. ft./24 hours per ASTM F 1869 and/or 90% RH per ASTM F 2170.

Before installation, concrete floors should also be tested for pH following procedures in ASTM F 710. When testing for pH, the allowable readings for the installation of Armstrong flooring are 5 to 9 when using S-700 and 5 to 11 when using S-521.

Bond Tests should also be conducted for compatibility with the substrate.

Temperature shall be maintained at a minimum of 65° F (18° C) and a maximum of 100° F (38° C) for 48 hours prior to installation, during installation and 48 hours after completion. A minimum temperature of 55° F (13° C) shall be maintained thereafter. Condition all flooring materials and adhesives to room temperature at least 48 hours prior to starting installation. Protect all materials from the direct flow of heat from hot-air registers, radiators, or other heating fixtures and appliances.

#### Procedure

STRIATIONS and MIGRATIONS should be installed with the following adhesives:

Subfloor	Wood Underlayment	Concrete	Ceramic, Marble, Terrazzo	Metal	Existing Resilient Floor
Adhesive	S-521 S-700	S-521 S-700	S-521 S-700	S-700	S-521 Tile-On System

Detailed instructions may be found at [armstrong.com](#).

#### MAINTENANCE

STRIATIONS and MIGRATIONS are designed to be maintained by traditional resilient flooring maintenance methods, which include the use of polishes, spray-buffing techniques and appropriate high-speed maintenance systems.

#### Initial Maintenance Immediately After Installation

- Sweep or vacuum thoroughly.
- Damp mop with a properly diluted neutral detergent solution such as Armstrong S-485 Floor Cleaner – carefully wiping up black marks and excessive soil.
- Apply two coats of high quality commercial floor polish such as Armstrong S-480.
- Do not wash, scrub or strip the floor for at least four days after installation.

#### Preparation for Commercial Use

For specific, ongoing maintenance procedures see [armstrong.com](#).

#### WARRANTIES

Armstrong warrants its regular (first quality) commercial floors and wall base to be free from manufacturing defects and warrants the installation integrity for five years from the date of purchase, if installed according to the installation and maintenance instructions at [armstrong.com](#). This warranty extends only to the original end-user. See [Armstrong Commercial Floor Warranty](#), F-3349 or visit [armstrong.com](#) for warranty details, limitations and exclusions.

**WARNING: EXISTING IN-PLACE RESILIENT FLOOR COVERING AND ASPHALTIC ADHESIVES. DO NOT SAND, DRY SWEEP, DRY SCRAPE, DRILL, SAW, BEADBLAST, OR MECHANICALLY CHIP OR PULVERIZE EXISTING RESILIENT FLOORING, BACKING, LINING FELT, ASPHALTIC "CUTBACK" ADHESIVE, OR OTHER ADHESIVE.**

These existing in-place products may contain asbestos fibers and/or crystalline silica.

Avoid creating dust. Inhalation of such dust is a cancer and respiratory tract hazard.

Smoking by individuals exposed to asbestos fibers greatly increases the risk of serious bodily harm.

Unless positively certain that the existing in-place product is a non-asbestos-containing material, you must presume it contains asbestos. Regulations may require that the material be tested to determine asbestos content and may govern removal and disposal of material.

See current edition of the Resilient Floor Covering Institute (RFCI) publication [Recommended Work Practices for the Removal of Resilient Floor Coverings](#) for instructions on removing all resilient floor covering structures or contact your retailer or Armstrong World Industries, Inc. 1 800 233 3823.

The floor covering or adhesive in this package does NOT contain asbestos.



LEED eligible under  
Credit EQ4.3 for  
Indoor Air Quality.



ISO 9001



Quality  
Management  
Standard

## SPECIFICATION DATA – VCT

**RAFFIA™ • ChromaSpin™ • Stonetex® • ARTEFFECTS® • Companion Square® Feature™ Tile & Strips • Rave® • MultiColor™ • Imperial® Texture**

### Specification Data

#### Material

Composed of 85% limestone in a polyvinyl chloride binder with pigments.

#### Construction and Colors

Color and pattern detail are dispersed uniformly throughout the thickness of the material. Color pigments are insoluble in water and resistant to cleaning agents and light.

ChromaSpin – Color detail is dispersed uniformly throughout the thickness of the material. Color pigments are insoluble in water and resistant to cleaning agents and light.

ARTEFFECTS – Color and pattern detail are dispersed uniformly throughout the wear layer. Color pigments are insoluble in water and resistant to cleaning agents and light.

#### Size

RAFFIA – 12 in. x 24 in. (305 mm x 610 mm)

ChromaSpin, ARTEFFECTS, Companion Square, Feature Tile, Rave, MultiColor, Imperial Texture – 12 in. x 12 in. (305 mm x 305 mm)

Stonetex – 18 in. x 18 in. (457 mm x 457 mm), 12 in. x 12 in. (305 mm x 305 mm)

Feature Strips – 2 in. x 24 in. (50.8 mm x 610 mm), 4 in. x 24 in. (101.6 mm x 610 mm), 6 in. x 24 in. (152.4 mm x 610 mm)

#### Gauge (nominal thickness)

1/8 in. (3.2 mm)

3/32 in. (2.4 mm) – Imperial Texture only

#### Limitations

VCT should **not** be used in the following areas:

- Hospital operating rooms.
- Heavy industrial and exterior areas.
- Commercial kitchens and commercial food processing areas.
- Where pointed spikes such as golf or track shoes will be used.
- Where the floor will be subjected to unusually concentrated static or dynamic loads.

**NOTE:** Concentrated static and dynamic loads such as hospital beds, roll-out bleachers, portable x-ray machines, etc., may visibly damage resilient as well as other types of floor coverings. For questions regarding product suitability and detailed instructions for floor preparation and installation in these applications, please contact Armstrong.

#### Suitable for Application Over

- Concrete, terrazzo, and other dry, structurally sound monolithic subfloors, which are suspended, on grade, or below grade.
- Suspended wood subfloor construction with approved wood underlayments, and a minimum of 18 in. (45.72 cm) well-ventilated air space below.
- Most metal floors and most existing single-layer resilient floors on approved underlayments.
- Radiant-heated subfloors with a maximum surface temperature of 85° F (29° C).

#### Unsuitable for Application Over

- Subfloors where excessive moisture or alkali is present.
- Sleeper-constructed wood subfloors, on grade or below grade.
- Lightweight aggregate concrete subfloors having a density of less than 90 lbs. per cu. ft. (1442 kg/m<sup>3</sup>) or cellular concrete having a plastic (wet) density less than 100 lbs. per cu. ft. (1602 kg/m<sup>3</sup>) [94 lbs. per cu. ft. (1506 kg/m<sup>3</sup>) dry weight], or concrete having a compressive strength of less than 3500 psi (24 MPa). Concrete slabs with heavy static and/or dynamic loads should have higher design strengths and densities calculated to accommodate such loads.

**Concrete curing agents, sealers, hardeners, or parting agents should be removed.**

#### TECHNICAL DATA

##### Shipping Weight

12 in. x 12 in. – 63 lbs./carton (28.5 kg)  
 18 in. x 18 in. – 64 lbs./carton (29 kg)  
 12 in. x 24 in. – 61 lbs./carton (27.7 kg)  
 2 in. x 24 in. – 11 lbs./carton (4.99 kg)  
 4 in. x 24 in. – 88 lbs./carton (39.9 kg)  
 6 in. x 24 in. – 68 lbs./carton (30.8 kg)

#### Packaging

12 in. x 12 in. – 45 tiles/carton (45 sq. ft.)  
 18 in. x 18 in. – 20 tiles/carton (30 sq. ft.)  
 12 in. x 24 in. – 22 tiles/carton (44 sq. ft.)  
 2 in. x 24 in. – 24 strips/carton (8 sq. ft.)  
 4 in. x 24 in. – 100 strips/carton (66.7 sq. ft.)  
 6 in. x 24 in. – 50 strips/carton (50 sq. ft.)

#### Gloss (typical value)

RAFFIA, ChromaSpin – 60 degrees specular: 9-18

Stonetex – 60 degrees specular: 15-30

ARTEFFECTS, Companion Square, Feature Tile, Feature Strips, Rave, MultiColor, Imperial Texture – 60 degrees specular: 20-40

#### Reference Specifications – International Standards

Stonetex, MultiColor, Imperial Texture, Rave, Companion Square – ASTM F 1066, Class 2 through pattern, ISO 10595, Type II

ARTEFFECTS – ASTM F 1066, Class 3 surface pattern, ISO 10595, Type III

Feature Tile & Strips – ASTM F 1066, Class 1 solid color, ISO 10595, Type I

#### Static Load Limit

ASTM F 970

125 lbs./sq. in. (8.79 kg/cm<sup>2</sup>)

**NOTE:** Floors should be protected from sharp-point loads and heavy static loads. High-heeled traffic (1000 psi (70.3 kg/cm<sup>2</sup>) or more) may visibly damage wood, resilient and other floor coverings.

#### Comparative Subjective Property Ratings

Durability – Good (ARTEFFECTS, 3/32 in. Imperial Texture); Very Good (All other products)

Maintainability – Fair (Feature Tile); Good (All other Products)

Resilience – Good

Subjective ratings (excellent, very good, good, fair) are in relation to other Armstrong commercial resilient floors. Ratings are not directly related to any one test. They are broadly based on tests and experience of Armstrong Research and Development under varying conditions and circumstances. These ratings should not be used for comparison to ratings used by other manufacturers to rank their own products.

#### Fire Test Data

ASTM E 648 Flooring Radiant Panel Critical Radiant Flux – 0.45 watts/cm<sup>2</sup> or more – Class I

ASTM E 662 Smoke Chamber Specific Optical Smoke Density – 450 or less

#### INSTALLATION

##### Job Conditions

Subfloors/underlayments shall be dry, clean and smooth. They shall be free from paint, varnish, solvents, wax, oil, existing adhesive residue, or other foreign matter.

For more detailed requirements of concrete, wood and metal subfloors, as well as wood and trowelable underlayments, refer to the **Armstrong Guaranteed Installation Systems** manual, F-5061 or to the installation instructions at [armstrong.com](http://armstrong.com).

Moisture testing must be performed on all concrete slabs regardless of their age or grade level including areas where resilient flooring has already been installed. Moisture Vapor Emission Rate (MVER) using Calcium Chloride (ASTM F1869) and/or percent relative humidity (ASTM F 2170) tests must be conducted. Following are Armstrong's maximum allowable moisture limits:

When using S-700 or S-750 Adhesives, moisture test results shall not exceed a MVER of 5.0 lbs./1000 sq. ft./24 hours per ASTM F 1869 and/or 80% RH per ASTM F 2170.

When using S-515 or S-521 Adhesives, moisture test results shall not exceed a MVER of 7.0 lbs./1000 sq. ft./24 hours per ASTM F 1869 and/or 90% RH per ASTM F 2170.

Before installation, concrete floors should also be tested for pH following procedures in ASTM F 710. When testing for pH, the allowable readings for the installation of Armstrong flooring are 5 to 9 when using S-700 or S-750 and 5 to 11 when using S-515 or S-521.

Bond Tests should also be conducted for compatibility with the substrate.

Temperature shall be maintained at a minimum of 65° F (18° C) and a maximum of 100° F (38° C) for 48 hours prior to installation, during installation and 48 hours after completion. A minimum temperature of 55° F (13° C) shall be maintained thereafter. Condition all flooring materials and adhesives to room temperature at least 48 hours prior to starting installation. Protect all materials from the direct flow of heat from hot-air registers, radiators, or other heating fixtures and appliances.

#### Procedure

Subfloor	Wood Underlayment	Concrete	Ceramic, Marble, Terrazzo	Metal	Existing Resilient Floor
Adhesive	S-515 S-521 S-700 S-750	S-515 S-521 S-700 S-750	S-515 S-521 S-700 S-750	S-700	S-515 S-521 S-750 Tile-On System

Detailed instructions may be found at [armstrong.com](http://armstrong.com).

#### MAINTENANCE

These products are designed to be maintained by traditional resilient flooring maintenance methods, which include the use of polishes, spray-buffing techniques and appropriate high-speed maintenance systems.

Cleaners – S-401 or S-485

Sealers – S-495

Polishes – S-403 or S-480

#### WARRANTIES

Armstrong warrants its regular (first quality) commercial resilient floors and wall base to be free from manufacturing defects for five years from the date of purchase. Armstrong also warrants the installation integrity of its commercial floor for five years from the date of purchase, if installed according to the installation and maintenance instructions at [armstrong.com](http://armstrong.com). This warranty extends only to the original end user. See [Armstrong Commercial Floor Warranty](http://armstrong.com), F-3349 or visit [armstrong.com](http://armstrong.com) for warranty details, limitations and exclusions.

**WARNING: EXISTING IN-PLACE RESILIENT FLOOR COVERING AND ASPHALTIC ADHESIVES. DO NOT SAND, DRY SWEEP, DRY SCRAPE, DRILL, SAW, BEADBLAST, OR MECHANICALLY CHIP OR PULVERIZE EXISTING RESILIENT FLOORING, BACKING, LINING FELT, ASPHALTIC "OUTBACK" ADHESIVE, OR OTHER ADHESIVE.**

These existing in-place products may contain asbestos fibers and/or crystalline silica.

Avoid creating dust. Inhalation of such dust is a cancer and respiratory tract hazard.

Smoking by individuals exposed to asbestos fibers greatly increases the risk of serious bodily harm.

Unless positively certain that the existing in-place product is a non-asbestos-containing material, you must presume it contains asbestos. Regulations may require that the material be tested to determine asbestos content and may govern removal and disposal of material.

See current edition of the Resilient Floor Covering Institute (RFCI) publication **Recommended Work Practices for the**

**Removal of Resilient Floor Coverings** for instructions on removing all resilient floor covering structures or contact your retailer or Armstrong World Industries, Inc. 1 800 233 3823.

The floor covering or adhesive in this package does NOT contain asbestos.



LEED eligible under Credit EQ4.3 for Indoor Air Quality.



ISO 9001



Quality Management Standard



FP7440F8684-112

Printed in United States of America.

© 2012 AWI Licensing Company

The Armstrong logo, EXCELRON® and LEED® are registered in the United States and Canada.

ARTEFFECTS®, BBT®, BioBased Tile®, BioStride®, Companion Square®, Imperial®, Stonetex® and Rave® are registered in the United States only.

All trademarks owned by AWI Licensing Company.

FloorScore™ is a trademark of the Resilient Floor Covering Institute.

LEED® is a registered trademark of the United States Green Building Council.

Colors pictured in this brochure are as accurate as possible but may not be identical to the actual product due to the printing process. For true color representation, order product samples before specifying.

**The knowledge and technical support you need to bring your vision to life.**

**Website**

Online Chat: [armstrong.com/commercialflooring](http://armstrong.com/commercialflooring)  
Technical: [floorexpert.com](http://floorexpert.com)

**Phone**

1 877 armstrong (276 7876)  
Choose Option 2 then:  
Option 1 - Order samples and literature  
Option 3, 3 - Talk to your Techline flooring expert  
Option 8 - Contact your local Armstrong representative



**FSC**  
[www.fsc.org](http://www.fsc.org)

**MIX**

**Paper from responsible sources**

**FSC® C074728**