



# VINYL SHEET FLOORING



TRANSLATIONS™ heterogeneous sheet



[ Between us, ideas become reality. ]®

COMMERCIAL **FLOORING**

## Vinyl Sheet Flooring

### TRANSLATIONS™ heterogeneous

**Updated Health Care Colors for Greater Design Flexibility and New Protective Coating For Easier Maintenance**

Versatile TRANSLATIONS™ captures the timeless beauty of linoleum visuals in a contemporary resilient floor covering. We've completely refreshed the line to meet your needs for exciting current and ascending colors.

- Twenty-four soothing neutrals, tinted neutrals and colors in a full-spectrum color palette.
- High-performance, UV-cured coating and embossing protect the floor's appearance, reduce maintenance and improve scuff-mark resistance.
- Identical construction, gauge and coating as Armstrong TIMBERLINE® and PERSPECTIVES™ for area-to-area installation benefits, plus maintenance consistencies.
- Color-coordinated weld rods allow you to camouflage or highlight floor seams with aseptic sealing for improved sanitation.
- A vital component of the Armstrong MEDS™ program, offering comprehensive flooring solutions for health care applications.



A full range of North American health care colors offers greater design flexibility.

Complementary colors in creamy white, cinnamon, antique brown and TIMBERLINE® medium cherry help create appealing, non-institutional environments.



Urethane coating and minimal embossing offers easier and consistent maintenance with TIMBERLINE® and PERSPECTIVES™.

TRANSLATIONS™ HETEROGENEOUS SHEET



gray peach  
34865



dove gray  
WO433



creamy white  
34849



frothy white  
WO149



antique brown  
34830



brown gold  
WO130



grayed blue  
34847



dusty blue  
WO147



blue fog  
34856



bay blue  
WO156



mint  
34879



rainy day gray  
WO426



desert sand  
34835



ivory  
WO532



almond  
34826



almondine  
WO025



cobalt  
34887



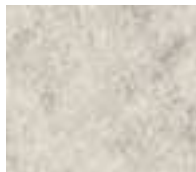
element blue  
WO273



sage  
34840



green bronze  
WO140



frost gray  
34836



dapple gray  
WO443



corn  
34888



parchment  
WO288



cinnamon  
34817



spice  
WO117



cloudy blue  
34855



cumulus blue  
WO155



mineral green  
34852



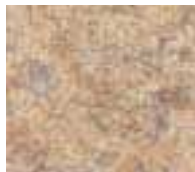
natural green  
WO152



mid gray  
34891



graystone  
WO103



wheat  
34882



harvest beige  
WO173



café mocha  
34839



brown mauve  
WO139



periwinkle blue  
34837



impressionist purple  
WO137



jungle green  
34861



tropical greenery  
WO161



galaxy black  
34898



black  
WO398



yellow straw  
34850



yellow gold  
WO150



cherry red  
34841



cherries jubilee  
WO142



indigo  
34827



ink blue  
WO027



## Specification Data TRANSLATIONS™ heterogeneous sheet

**ARMSTRONG FLOOR PRODUCTS**  
Armstrong World Industries, Inc.  
P.O. Box 3001  
Lancaster, PA 17604 U.S.A.

**ARMSTRONG FLOOR PRODUCTS**  
Armstrong World Industries Canada Ltd.  
6911 Decarie Blvd.  
Montreal, Quebec H3W 3E5 Canada

### 1. PRODUCT NAME

Armstrong TRANSLATIONS™ heterogeneous flooring

### 2. PRODUCT DESCRIPTION

#### Material

A clear wear layer composed of polyvinyl chloride resin, plasticizers and stabilizers on a filled vinyl backing.

#### Construction and Colors

A polyurethane coated, hot-melt/calendered clear wear layer on a filled, calendered vinyl backing. TRANSLATIONS™ has an overall nonpattern-matched visual printed on the backing layer. The surface of TRANSLATIONS™ has an overall embossed texture. Color pigments are insoluble in water and resistant to cleaning agents and light.

#### Sizes

6 ft. 7 in. (2.0 m) wide, up to 72 ft. (22 m) long

#### Gauge (nominal)

0.080 in. (2 mm) overall

0.020 in. (0.5 mm) wear layer

#### Limitations

TRANSLATIONS™ should **not** be used in the following areas:

- Heavy industrial and exterior areas.
  - Commercial kitchens and commercial food processing areas.
  - Where pointed spikes such as golf or track shoes will be used.
  - Where the floor will be subjected to unusually concentrated static or dynamic loads.
- NOTE:** Concentrated static and dynamic loads such as hospital beds, roll-out bleachers, portable x-ray machines, etc. may visibly damage resilient as well as other types of floor coverings. For questions regarding product suitability and detailed instructions for floor preparation and installation in these applications, please contact Armstrong.

#### Suitable for Application Over

- Concrete, terrazzo, and other dry, structurally sound monolithic subfloors, which are suspended or on grade.
- Suspended wood subfloor construction with wood underlayment, and a minimum of 18 in. (45.72 cm) well-ventilated air space below.
- Steel, stainless steel and aluminum floors and most existing single-layer resilient floors on approved underlayments.
- Radiant-heated subfloors with a maximum surface temperature of 85° F (29° C).

#### Unsuitable for Application Over

- Subfloors where excessive moisture or alkali is present.
- Sleeper-constructed wood subfloors.
- Lightweight aggregate concrete subfloors having a density of less than 90 lbs. per cu. ft. (1442 kg/m³) or cellular concrete having a plastic (wet) density less than 100 lbs. per cu. ft. (1602 kg/m³) [94 lbs. per cu. ft. (1506 kg/m³) dry weight], or concrete having a compressive strength of less than 3500 psi (24 MPa). Concrete slabs with heavy static and/or dynamic loads should have higher design strengths and densities calculated to accommodate such loads.

Concrete curing agents, sealers, hardeners or parting agents should be removed.

### 3. TECHNICAL DATA

#### Shipping Weight

6.5 lbs./sq. yd. (3.5 kg/m²)

#### Gloss (typical value)

60 degrees specular: approximately 13-17

#### Reference Specifications

ASTM F 1303, Type I, Grade 1, Class B backing.

#### Static Load Limit

750 lbs./sq. in. (52.73 kg/cm²)

ASTM F 970 modified by specifying a higher load on a smaller diameter tip. All other conditions are standard.

**NOTE:** Floors should be protected from sharp-point loads and heavy-static loads. High-heeled traffic [1000 psi (70.3 kg/cm²) or more] may visibly damage wood, resilient and other floor coverings.

#### Comparative Subjective Property Ratings

Durability – Very Good  
Maintainability – Excellent  
Resilience – Excellent

Subjective ratings (excellent, very good, good, fair) are in relation to other Armstrong commercial resilient floors. Ratings are not directly related to any one test. They are broadly based on tests and experience of Armstrong Research and Development under varying conditions and circumstances. These ratings should not be used for comparison to ratings used by other manufacturers to rank their own products.

#### Fire Test Data

ASTM E 648 Flooring Radiant Panel Critical Radiant Flux – 0.45 watts/cm² or more, Class I  
ASTM E 662 Smoke Chamber Specific optical Smoke Density – 450 or less

Numerical flammability ratings alone may not define the performance of the product under actual fire conditions. These ratings are provided only for use in the selection of products to meet the specified limits.

### 4. INSTALLATION

#### Job Conditions

Subfloors/underlayments shall be dry, clean, and smooth. They shall be free from paint, varnish, solvents, wax, oil, existing adhesive residue, or other foreign matter.

For more detailed requirements of concrete, wood and metal subfloors, as well as wood and trowelable underlayments, refer to Armstrong Guaranteed Installation Systems manual, F-5061. Calcium Chloride Tests for moisture must be conducted. Armstrong offers a guideline of a maximum acceptable moisture emission level of 3.0 lbs. per 1000 sq. ft. per 24 hours. Bond Tests should also be conducted for compatibility with the substrate. When testing for alkalinity, the allowable readings for the installation of Armstrong flooring are 5 to 9 on the pH scale.

Temperature shall be maintained at a minimum of 65° F (18° C) and a maximum of 100° F (38° C) for 48 hours prior to installation, during installation and 48 hours after completion when using S-575 Adhesive. When using S-240 Epoxy Adhesive, the temperature shall be maintained at a minimum of 65° F (18° C) and a maximum of 85° F (29° C) for 48 hours prior to and during installation and for 48 hours after completion. A minimum temperature of 55° F (13° C) shall be maintained thereafter. Condition all flooring materials and adhesives to room temperature at least 48 hours prior to starting installation. Protect all materials from the direct flow of heat from hot-air registers, radiators, or other heating fixtures and appliances.

#### Procedure

TRANSLATIONS™ should be installed using Armstrong S-575 Adhesive in the field area and S-580 Adhesive in flash cove areas. Seams may be heat welded or sealed and wiped with S-553 Seam Sealer. TRANSLATIONS™ installed in areas subjected to heavy static and dynamic loads must be installed with Armstrong S-240 Epoxy Adhesive in the field area and S-580 Adhesive in flash cove areas. Seams **must** be heat welded. Detailed instructions may be found in the Armstrong Guaranteed Installation Systems manual, F-5061.

### 5. MAINTENANCE

#### Initial Maintenance Immediately After Installation

- Sweep or vacuum thoroughly.
- Damp mop with a very dilute neutral detergent solution such as Armstrong S-485 Floor Cleaner. Do not wash the floor for at least four or five days after installation. Black marks and dirty spots can be treated by spot scrubbing (use nothing more abrasive than a 3M blue or green pad or equal).
- If maintaining TRANSLATIONS™ with polish, as a temporary measure, apply a minimum of two coats of high-quality commercial floor polish such as Armstrong S-480 Floor Polish to protect the floor until regular maintenance procedures can be started.

#### Preparation for Commercial Use

For specific, ongoing maintenance procedures, see Armstrong Commercial Resilient Flooring Maintenance Recommendations booklet, F-8663B.

### 6. WARRANTY

Armstrong warrants its regular (first quality) commercial resilient floors and wall base to be free from manufacturing defects for five years from the date of purchase if installed according to the Armstrong Guaranteed Installation Systems manual, F-5061. See Armstrong Commercial Floor Warranty, F-3349 or visit [www.armstrong.com](http://www.armstrong.com) for warranty details, limitations and exclusions.



**DO NOT SAND, DRY SWEEP, DRY SCRAPE, DRILL, SAW, BEADBLAST OR MECHANICALLY CHIP OR PULVERIZE EXISTING RESILIENT FLOORING, BACKING, LINING FELT, ASPHALTIC "CUT BACK" ADHESIVES OR OTHER ADHESIVES.**

These products may contain either **asbestos fibers** and/or **crystalline silica**. Avoid creating dust. Inhalation of such dust is a cancer and respiratory tract hazard. Smoking by individuals exposed to asbestos fibers greatly increases the risk of serious bodily harm. See current edition of the Resilient Floor Covering Institute (RFCI) publication Recommended Work Practices for the Removal of Resilient Floor Coverings, for instructions on removing all resilient floor covering structures.

For specifications, technical information or samples,  
phone: **1 877 ARMSTRONG (276 7876)**

fax: **1 800 599 9335**

web site: **[www.armstrong.com/flooring](http://www.armstrong.com/flooring)**

[ Between us, ideas become reality. ]®

COMMERCIAL

**FLOORING**

Printed in United States of America  
All trademarks owned by AWI Licensing Company  
© 2005 AWI Licensing Company

F-6453-505