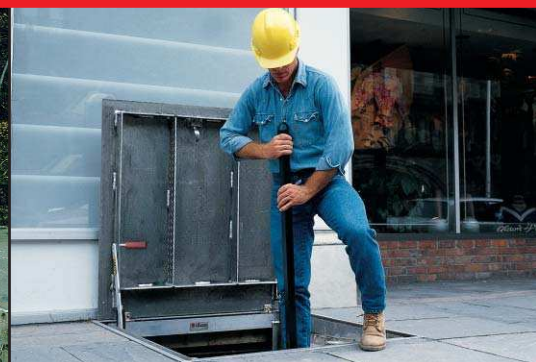
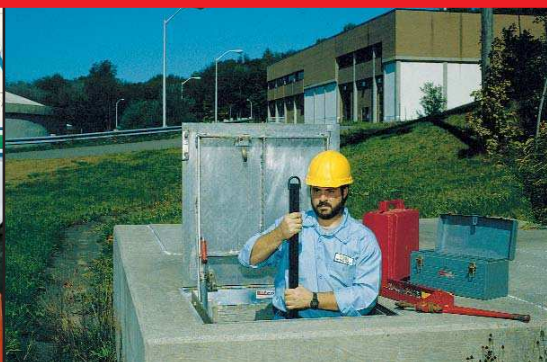
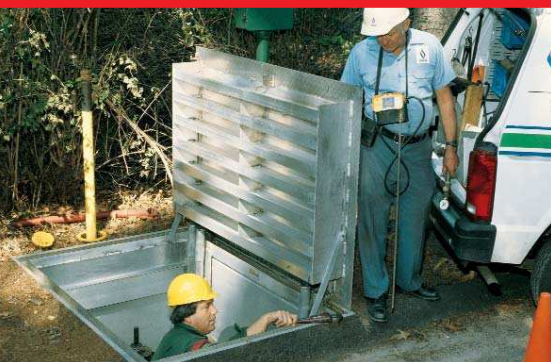




*Since 1926*

# Floor & Vault Doors



Bilco Floor, Vault and Sidewalk Doors provide reliable access to equipment stored underground or below/between building floors. Commonly used by gas, electric and water utilities for frequent access by service personnel, Bilco doors are available in many different sizes and configurations to suit any application.



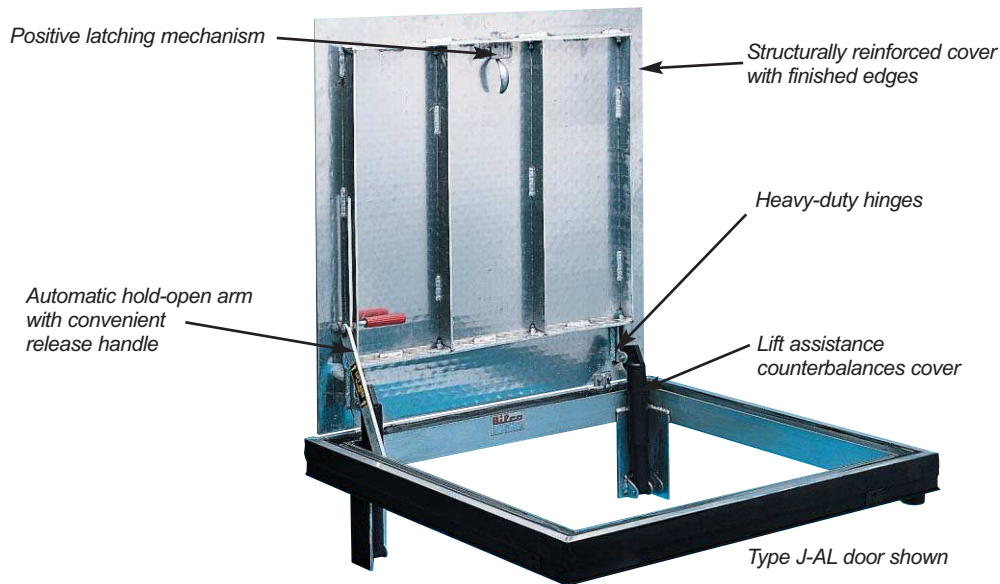
# Floor & Vault Doors



## Advantages of Floor, Vault and Sidewalk Doors

Bilco Floor, Vault and Sidewalk Doors are ruggedly constructed to provide many years of dependable service. Doors are available in a wide range of sizes and configurations, and all models offer the following standard features and benefits:

- Engineered lift assistance for smooth, easy door operation, regardless of cover size and weight
- Automatic hold-open arm that locks the cover in the open position to ensure safe egress
- Type 316 stainless steel slam lock to prevent unauthorized access
- Constructed with corrosion resistant materials and hardware
- Heavy duty hinges, custom engineered for horizontal door applications



## Typical Applications

- |   |   |   |
|---|---|---|
| <ul style="list-style-type: none"><li>• Airports</li><li>• Correctional Facilities</li><li>• Electric Utilities</li><li>• Factories</li><li>• Hospitals</li></ul> | <ul style="list-style-type: none"><li>• Manufacturing Facilities</li><li>• Natural Gas Utilities</li><li>• Office Buildings</li><li>• Processing Plants</li><li>• Retail Structures</li></ul> | <ul style="list-style-type: none"><li>• Schools</li><li>• Telecommunications Vaults</li><li>• Transit Systems</li><li>• Warehouses</li><li>• Water/Waste Treatment Plants</li></ul> |
|---|---|---|

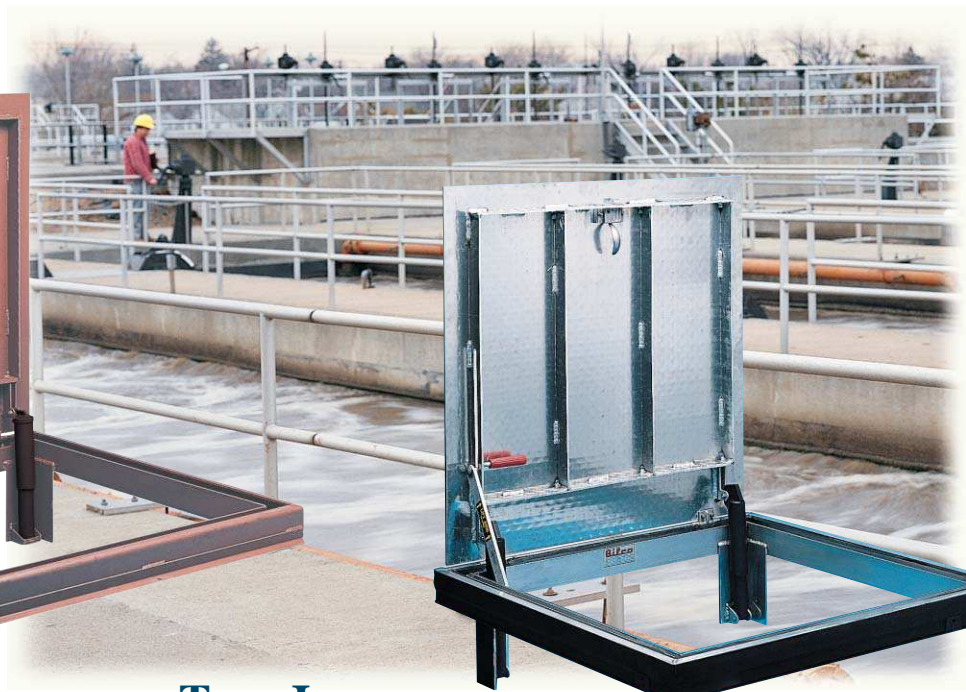




# Drainage Doors



**Type J Steel**



**Type J**

**With Drainage Channel Frame**

For use in exterior applications where there is concern about water or other liquids entering the access opening.



**Type J-AL Aluminum**



**Type J H20 Steel**



**Type J H20**

**With Drainage Channel Frame**

For use in exterior applications where the doors will be subjected to vehicular traffic.  
Designed to withstand AASHTO H-20 wheel loading in off-street locations.



**Type J-AL H20 Aluminum**



# Non-Drainage Doors



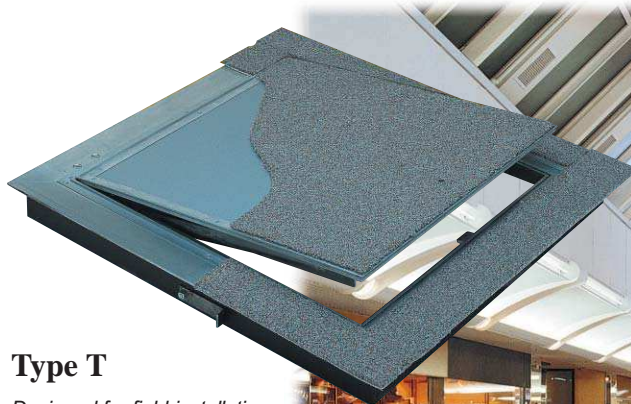
**Type Q Steel**



**Type K Aluminum**

## **Type Q & K With Angle Frame**

Generally for interior use or exterior applications where water or liquid infiltration is not a concern.



**Type T**

*Designed for field-installation  
of carpet or composition  
flooring material*



**Type TER**

## **Interior Doors**

Accept a wide variety of flooring materials, allowing the doors to virtually blend in with the surrounding floor.

*Designed for field-installation of architectural  
flooring material up to 1" (25mm) in thickness*



# Life Safety Doors



## Type FR

### Fire Rated Floor Door

Maintains the fire rating of a 2-hour floor/ceiling assembly where access is required between building floors.



Complies with  
NFPA 80  
NFPA 251  
ASTM E119



## Emergency Evacuation

Provides egress from underground rapid transit system platforms and tunnels in emergency situations.



Southern California Rapid Transit District (SCRTD)

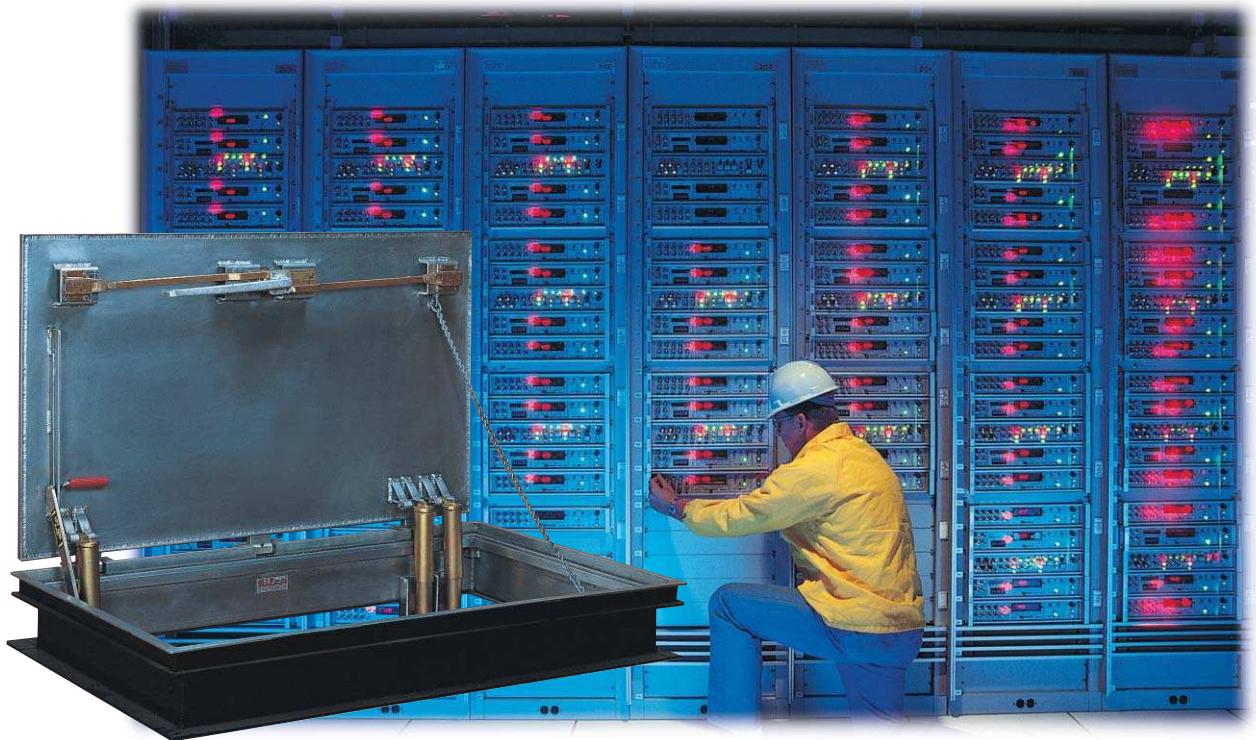


# Special Application Doors



## Type HLC

Reinforced for extreme loading conditions generated by vehicles such as large aircraft, heavy equipment and fork lift trucks.



## Type WT

Watertight under a 25 foot (7.62m) head of water. Designed for installation on controlled environment vaults (CEVs) and other applications where incidental flooding may occur.

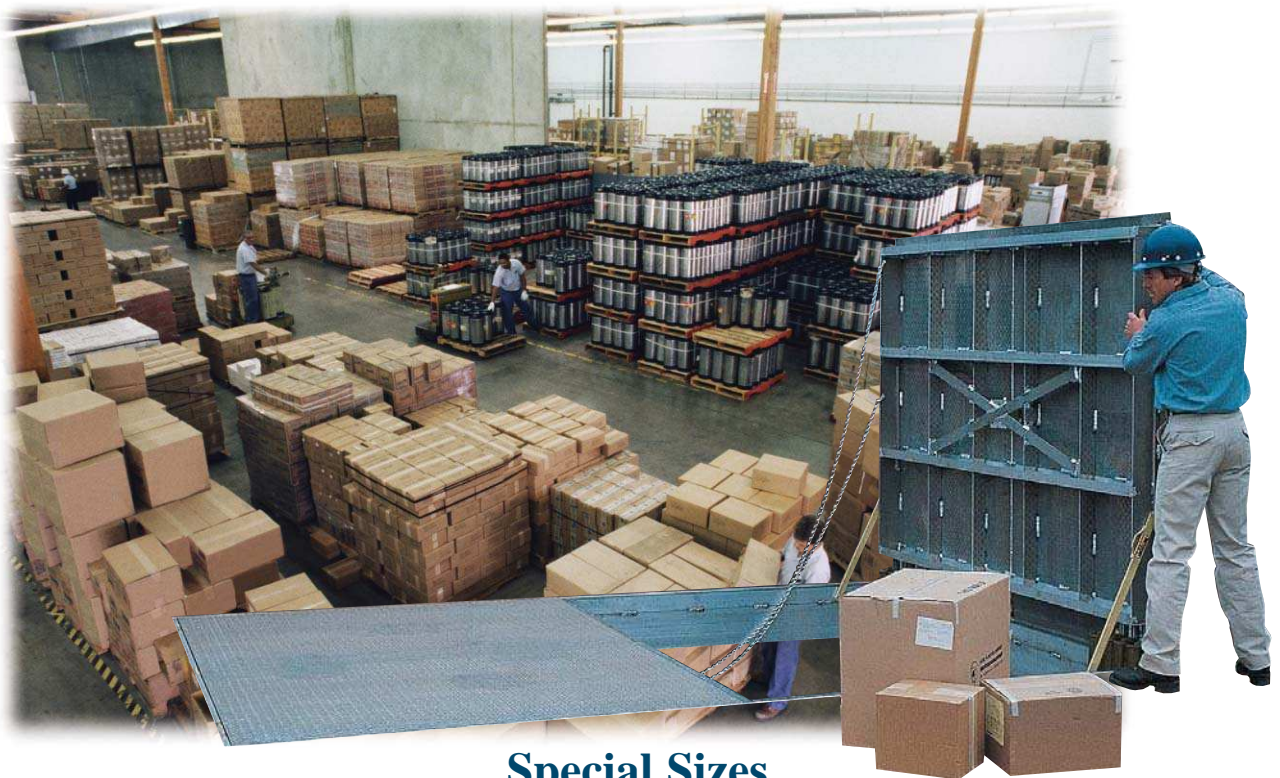


# Special Application Doors



## Type PCM

Incorporates several innovative features which reduce the amount of labor required by precast concrete manufacturers to cast the door into a concrete vault.



## Special Sizes

Type JD and JD-AL double leaf doors can be manufactured to virtually any size to meet unique access requirements.

# Floor & Vault Doors

## Options

Bilco floor, vault and sidewalk doors can include any of the option packages shown below. In addition, Bilco's engineering department can also custom design doors for your unique applications.



### Locking & Latching Devices

1. Cylinder lock with a keyway protected by a threaded cover plug.
2. Recessed padlock hasp covered by a flush hinged lid.
3. Security cover plugs

## Special Finishes

- Steel doors and frames can be supplied with a hot-dip galvanized finish
- All aluminum doors can be supplied with an anodized finish
- Other custom finishes are available when specified



## Stainless Steel Hardware

- For highly corrosive environments, Bilco can provide Type 316 stainless steel hardware throughout. Includes latch and lifting mechanism assemblies; hold-open and guide arm and guides; and all brackets, hinges, pins and fasteners.

## Other Options

- High-traction, slip-resistant cover finish
- Steel or aluminum grating
- Submersible pump guide rail brackets
- Insulated covers
- Hand rails and panic hardware
- Snow and ice melting cables



## Ladder-Up® Safety Posts

Provide easier, safer access through doors that utilize a fixed ladder. Telescoping post provides a positive hand-hold, enabling the ladder user to enter or exit in an upright and balanced position.



The Bilco Company  
P.O. Box 1203 • New Haven, CT 06505  
(203) 934-6363 • Fax (203) 933-8478 • [www.bilco.com](http://www.bilco.com)

