



## **Tile & Stone Installation Systems**

---

**Table of Contents**

**Drawings**

# Table of Contents

<b>Application</b>	<b>TCA Handbook Detail</b>
--------------------	--------------------------------

*NOTE: Click the TCA Detail number to navigate to that drawing.*

## **FLOORS, EXTERIOR**

Roof Deck	Cement Mortar	F103
Balcony Deck	Thin Set	F104

## **FLOORS, INTERIOR**

Concrete Subfloor	Cement Mortar, Cleavage Membrane	F111
	Cement Mortar, Bonded	F112
	Latex-Portland Cement Mortar	F113
	Cement Mortar, Epoxy Grout	F114
	Latex-Portland Cement Mortar, Epoxy Grout	F115
	Organic Adhesive or Epoxy Adhesive	F116
	Waterproof Membrane - Cement Mortar Bed	F121
	Waterproof Membrane - Thin Set	F122
	Crack Isolation Membrane - Partial Coverage	F125
	Crack Isolation Membrane - Full Coverage	F125A
	Crack Isolation Membrane – Young Concrete, Uncoupling Membrane	F128
	Poured Gypsum Underlayment, Bonded	F200
	Cementitious Self Leveling Underlayment, Bonded	F205
Chemical-Resistant Concrete Subfloor	Epoxy Mortar & Grout	F131
	Epoxy Mortar & Grout on Cementitious Mortar Bed	F132

# Table of Contents

Application	TCA Handbook Detail
-------------	------------------------

*NOTE: Click the TCA Detail number to navigate to that drawing.*

## **FLOORS, INTERIOR (cont'd)**

Radiant Heat on Concrete	Cementitious Self Leveling Underlayment, Hydronic System, Thin Set	RH112
	Latex-Portland Cement Mortar, Electric System	RH115
	Cementitious Self-Leveling Underlayment, Bonded Electric System-Thin-Set	RH116
Radiant Heat on Wood Subfloor	Cementitious Self-Leveling Underlayment	RH123
	EGP Latex-Portland Cement Mortar Electric System	RH130
	Radiant Heat on Wood Subfloor: Backer Board Electric System, Thin Set	RH135
Wood Subfloor	Cement Mortar	F141
	Cementitious Backer Unit/Fiber Cement Underlayment Thin Set	F144
	Cement Mortar Metal Lath	F145
	Plywood Underlayment EGP Latex-Portland Cement Mortar	F150

# Table of Contents

<b>Application</b>	<b>TCA Handbook Detail</b>
--------------------	--------------------------------

*NOTE: Click the TCA Detail number to navigate to that drawing.*

## **WALLS, EXTERIOR & INTERIOR**

Masonry	Cement Mortar	W201
	Dry Set Mortar or Latex Portland Cement	W202
	Wood or Metal Studs, Cement Backer Unit (Exterior)	W244E

## **WALLS, INTERIOR**

Masonry or Concrete	Cement Mortar, Bonded	W211
Solid Backing	Organic Adhesive	W223
Metal Studs	Gypsum Board, Organic Adhesive	W242
Wood or Metal Studs	Gypsum Board, Dry Set or Portland Cement Mortar	W243
	Cement Backer Unit	W244C
	Coated Glass Mat Water-Resistant Gypsum Backer Board	W245
	Cementitious Coated Foam Backer Board	W246
	Fiber-Reinforced Water-Resistant Gypsum Backerboard	W247

# Table of Contents

<b>Application</b>	<b>TCA Handbook Detail</b>
--------------------	--------------------------------

*NOTE: Click the TCA Detail number to navigate to that drawing.*

## **RENOVATION**

---

Tile Over Tile

TR712

## **SOUND CONTROL (INTERIOR)**

---

Cork Underlayment      Latex Portland Cement Mortar Epoxy Grout  
on Concrete

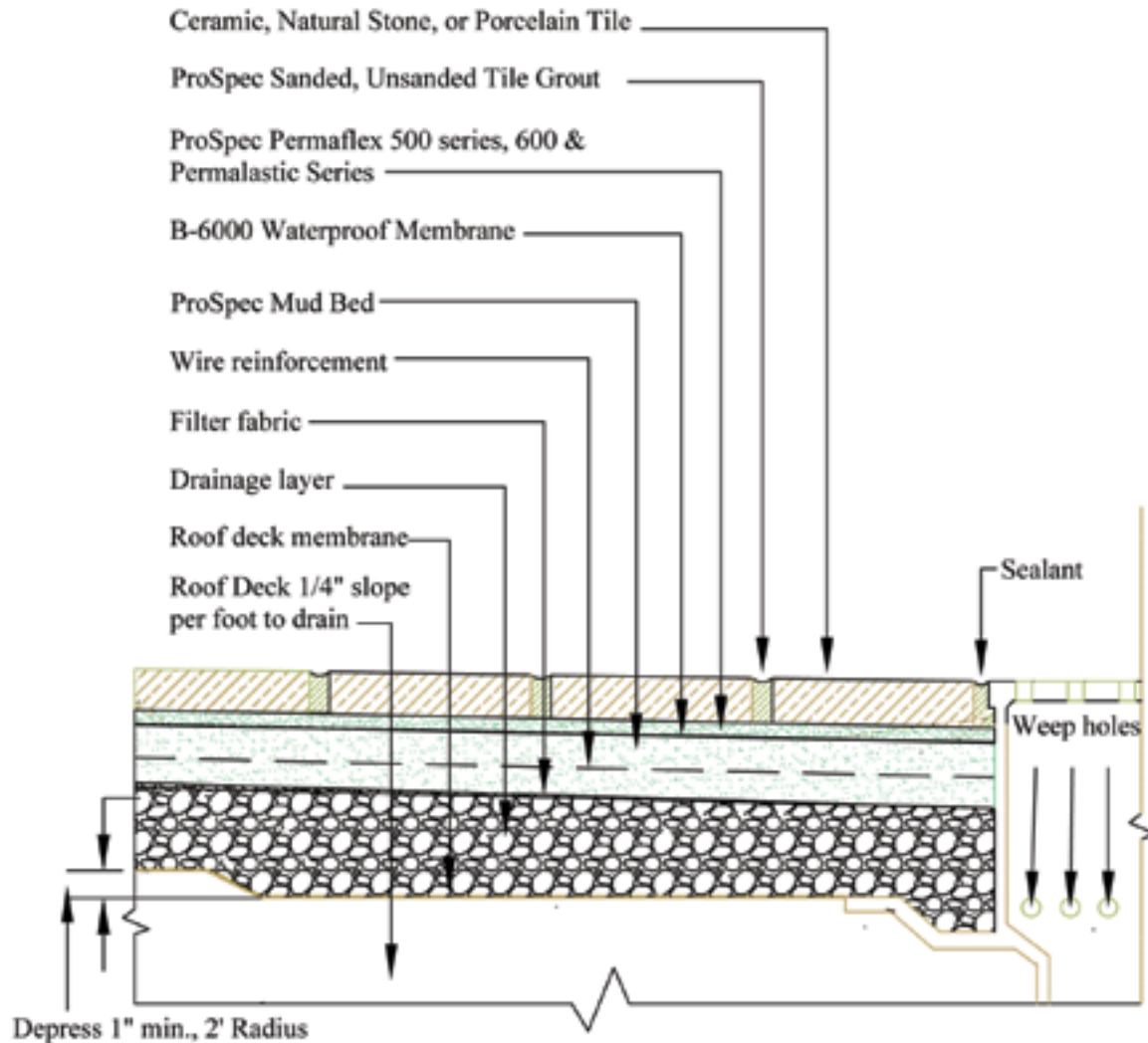
F135

# F103



## Floors, Interior/Exterior

### Roof Deck Membrane – Cement Mortar



**NOTES:**

Refer to ProSpec Technical Data Sheet for product installation specifications.

**Issue Date**  
09-02-09

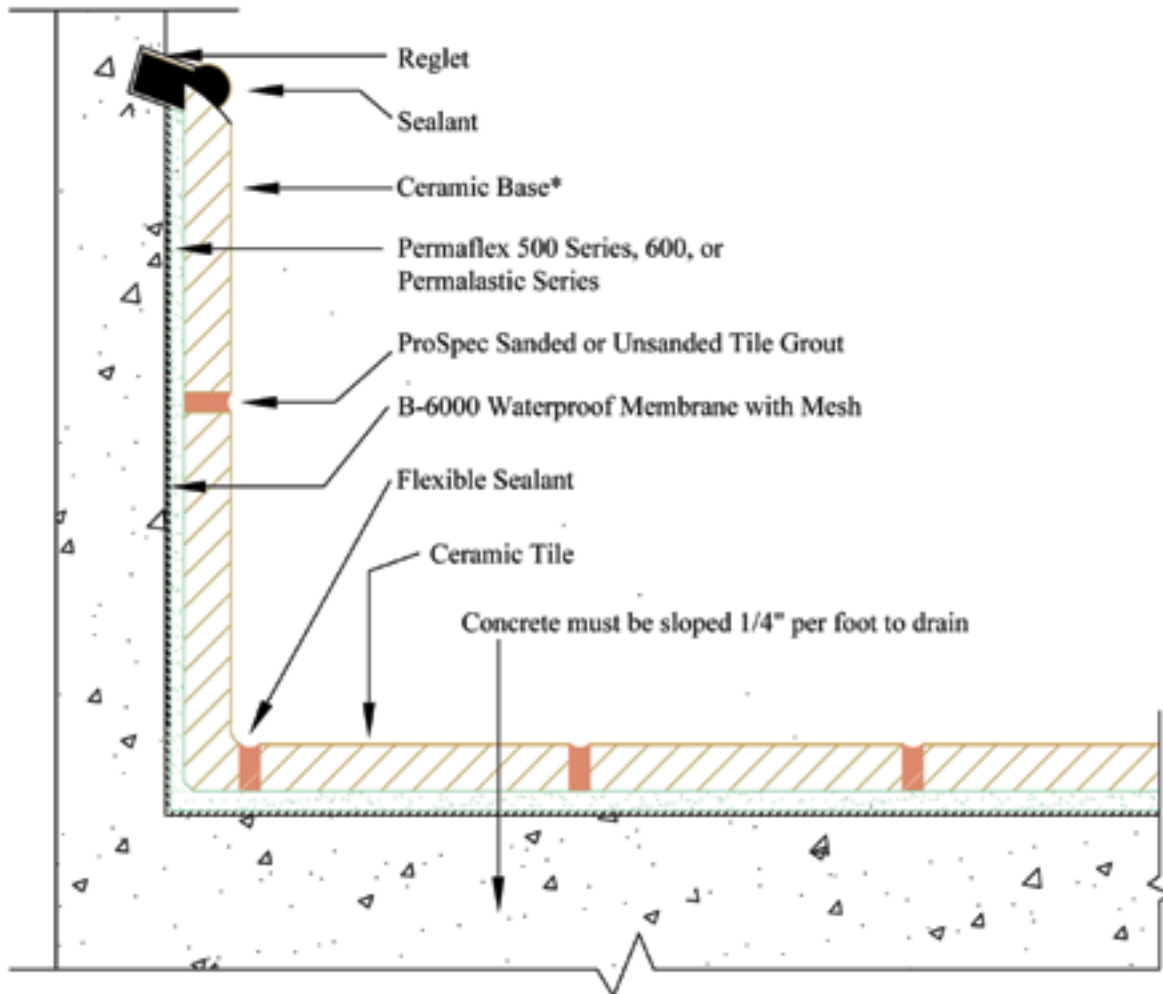
<u>Minimum Requirements:</u>		
Product	ANSI Spec	ISO
Adhesive	118.4	C2- S1
Grout	118.6	CG 1
Waterproof Membrane	118.10 - IAPMO Approval	

**Drawing Number**  
F103

# F104

## Floors, Exterior

### Balcony Deck – Thin Set



**NOTES:**

Refer to ProSpec Technical Data Sheet for product installation specifications.

\* Flush cove base assembly shown.

**Issue Date**  
09-02-09

<u>Minimum Requirements:</u>		
<u>Product</u>	<u>ANSI Spec</u>	<u>ISO</u>
Adhesive	118.4	C2-S1
Grout	118.7	CG 1
Waterproof Membrane	118.10 - IAPMO Approval	

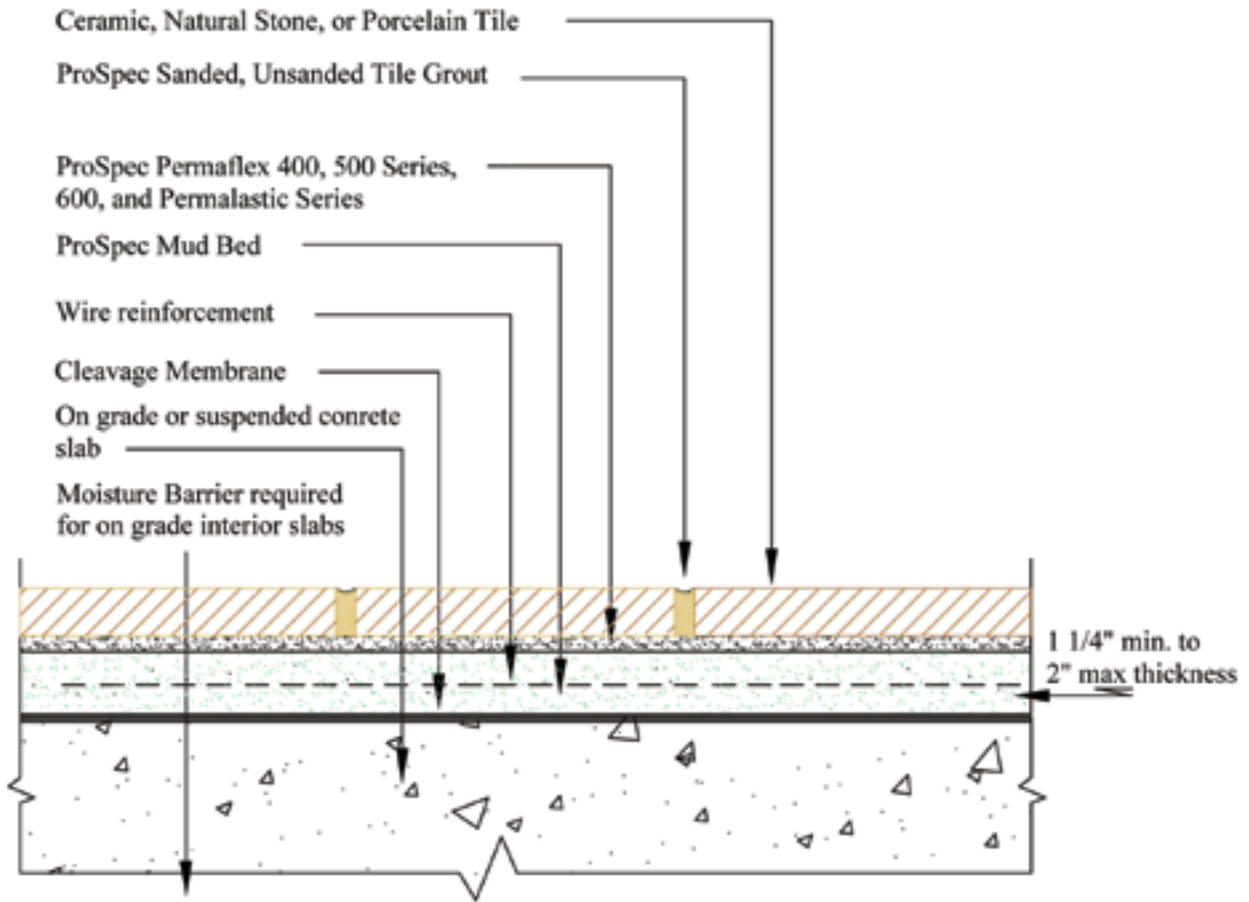
**Drawing Number**  
F104

# F111



## Floors, Interior/Exterior

Concrete Subfloor – Cement Mortar, Cleavage Membrane



**NOTES:**

Refer to ProSpec Technical Data Sheet for product installation specifications.

**Issue Date**  
09-02-09

Minimum Requirements:		
Product	ANSI Spec	ISO
Adhesive	118.4	C2
Grout	118.6	CG 1
Waterproof Membrane	118.10 IAPMO Approval	

**Drawing Number**  
F111

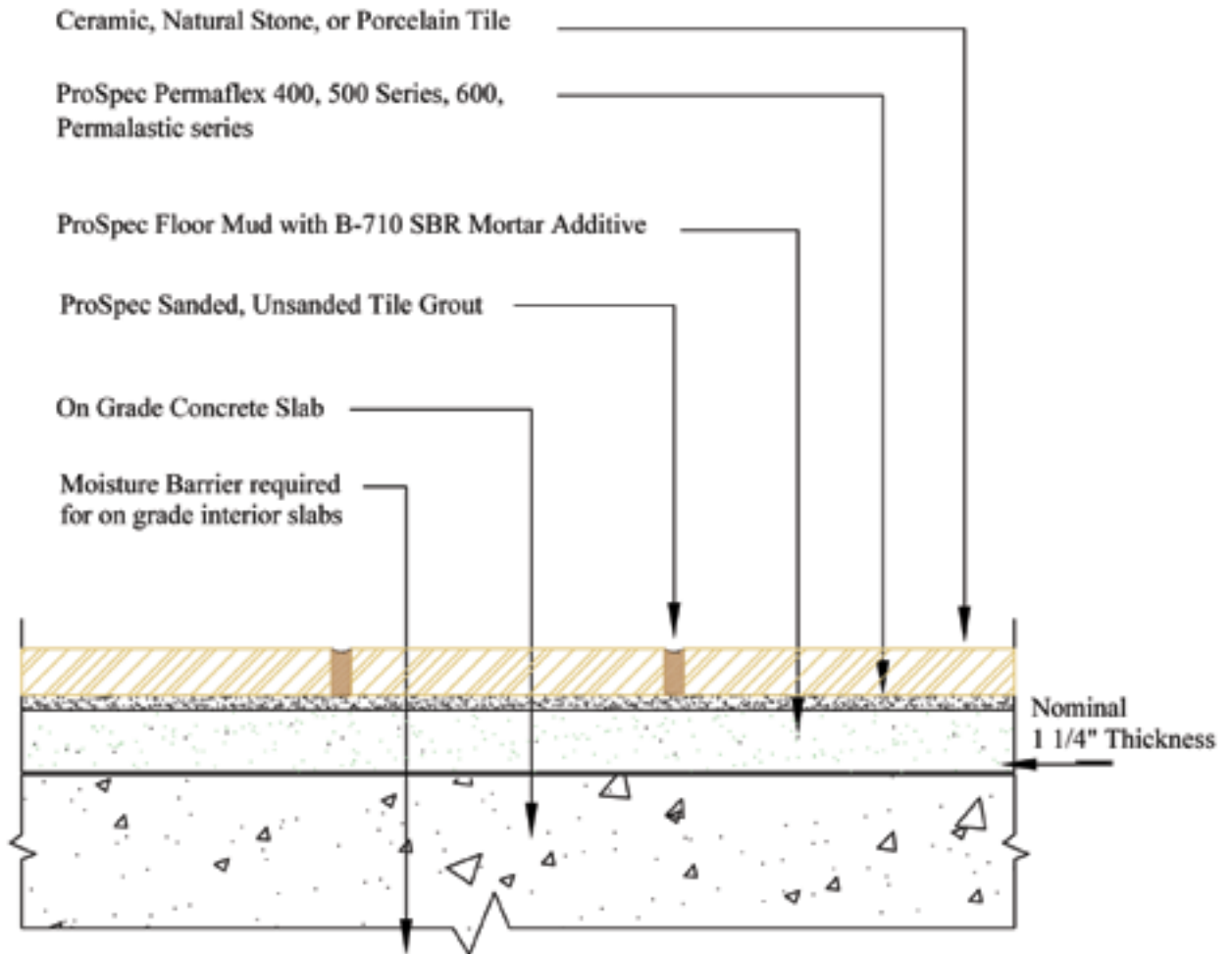


# F112



## Floors, Interior

Cement Mortar – Bonded



**NOTES:**

Refer to ProSpec Technical Data Sheet for product installation specifications.

**Issue Date**  
09-02-09

Product	Minimum Requirements:	
	ANSI Spec	ISO
Adhesive	118.4	C2
Grout	118.6	CG 1
Waterproof Membrane	118.10 - IAPMO Approval	

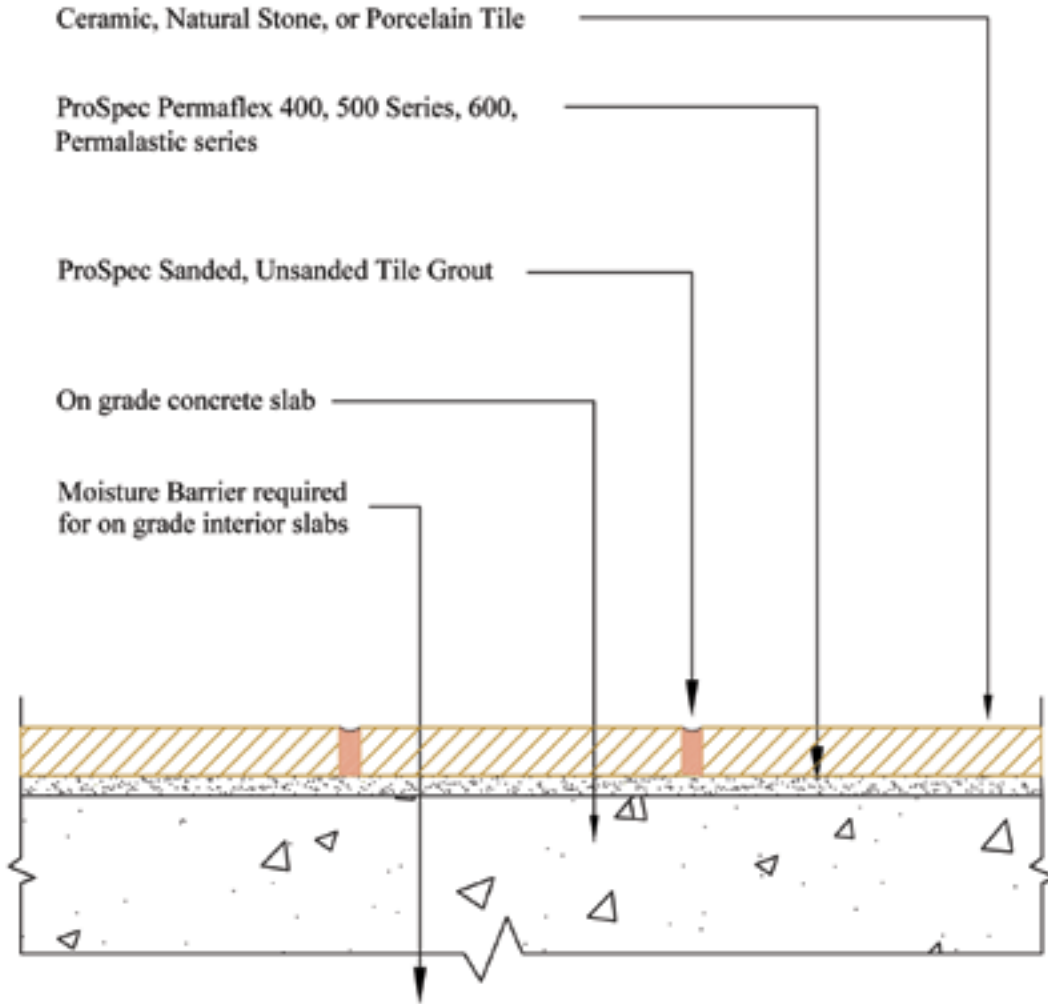
**Drawing Number**  
F112

# F113



## Floors, Interior

Concrete Subfloor – Latex-Portland Cement Mortar



### NOTES:

Refer to ProSpec Technical Data Sheet for product installation specifications.

**Issue Date**

09-02-09

### Minimum Requirements:

Product	ANSI Spec	ISO
Adhesive	118.4	C2
Grout	118.6	CG 1

**Drawing Number**

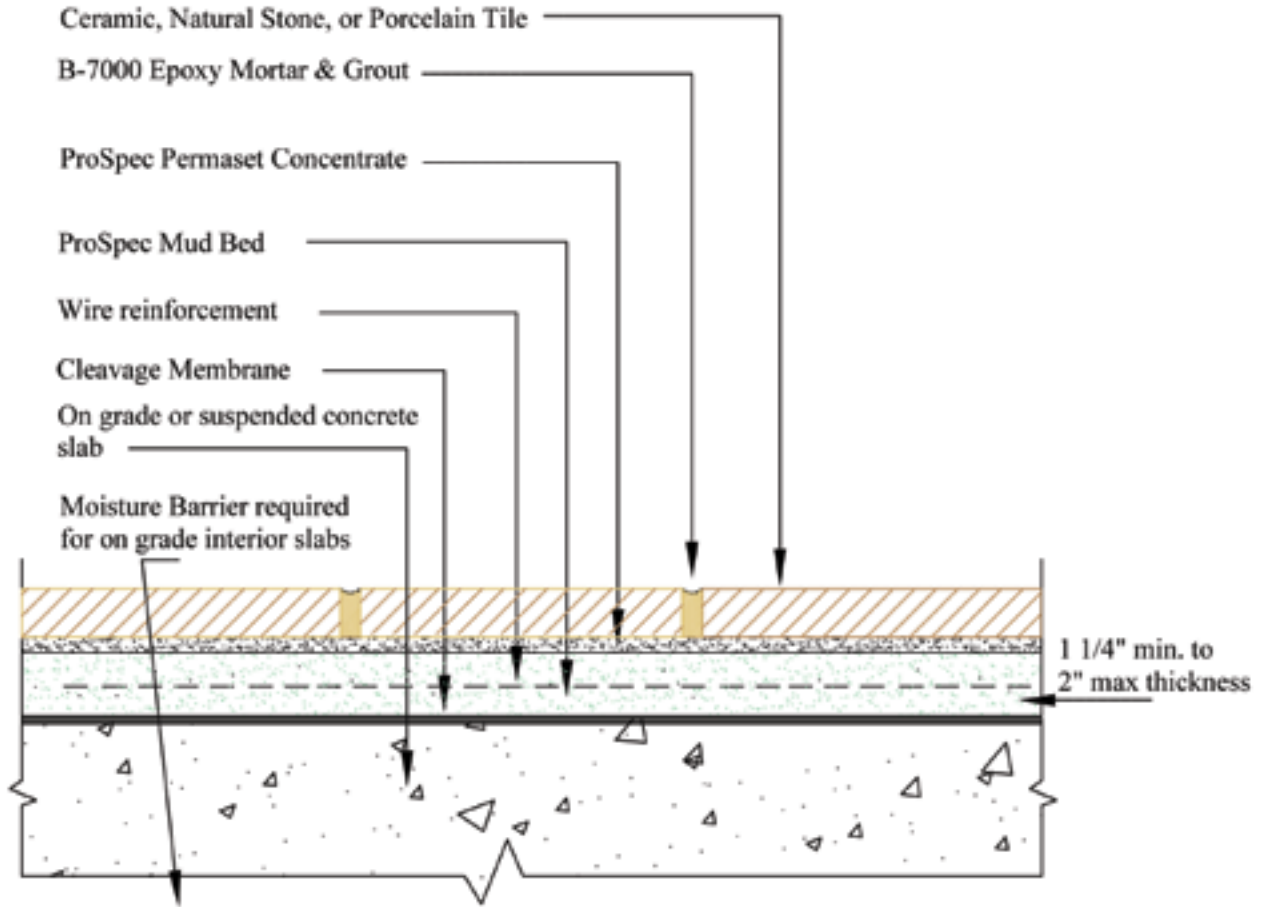
F113

# F114



## Floors, Interior

Concrete Substrate – Cement Mortar, Epoxy Grout



**NOTES:**

Refer to ProSpec Technical Data Sheet for product installation specifications.

**Issue Date**

09-02-09

Minimum Requirements:

Product	ANSI Spec	ISO
Grout	118.3	RG

**Drawing Number**

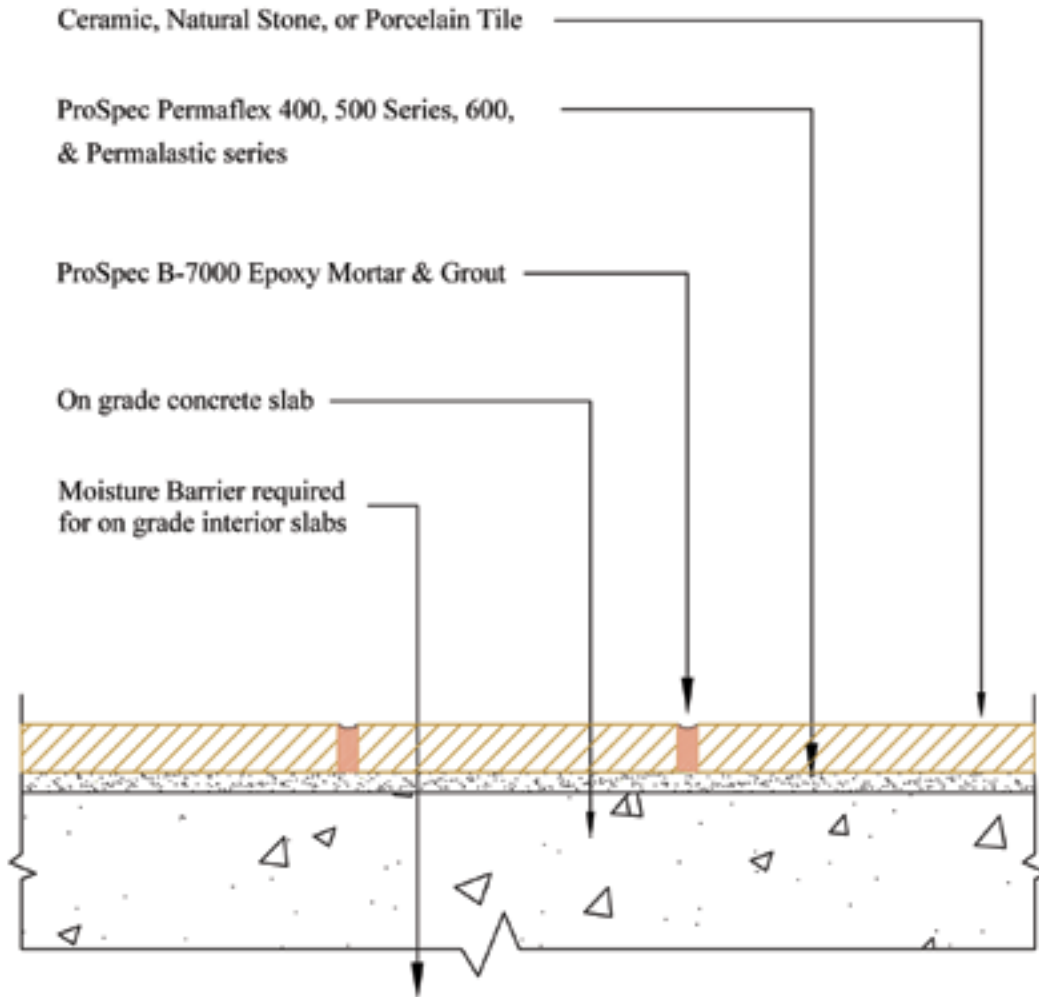
F114

# F115



## Floors, Interior

Concrete Subfloor – Latex-Portland Cement Mortar, Epoxy Grout



### NOTES:

Refer to ProSpec Technical Data Sheet for product installation specifications.

#### Issue Date

09-02-09

#### Minimum Requirements:

Product	ANSI Spec	ISO
Adhesive	118.4	C2
Grout	118.3	RG

#### Drawing Number

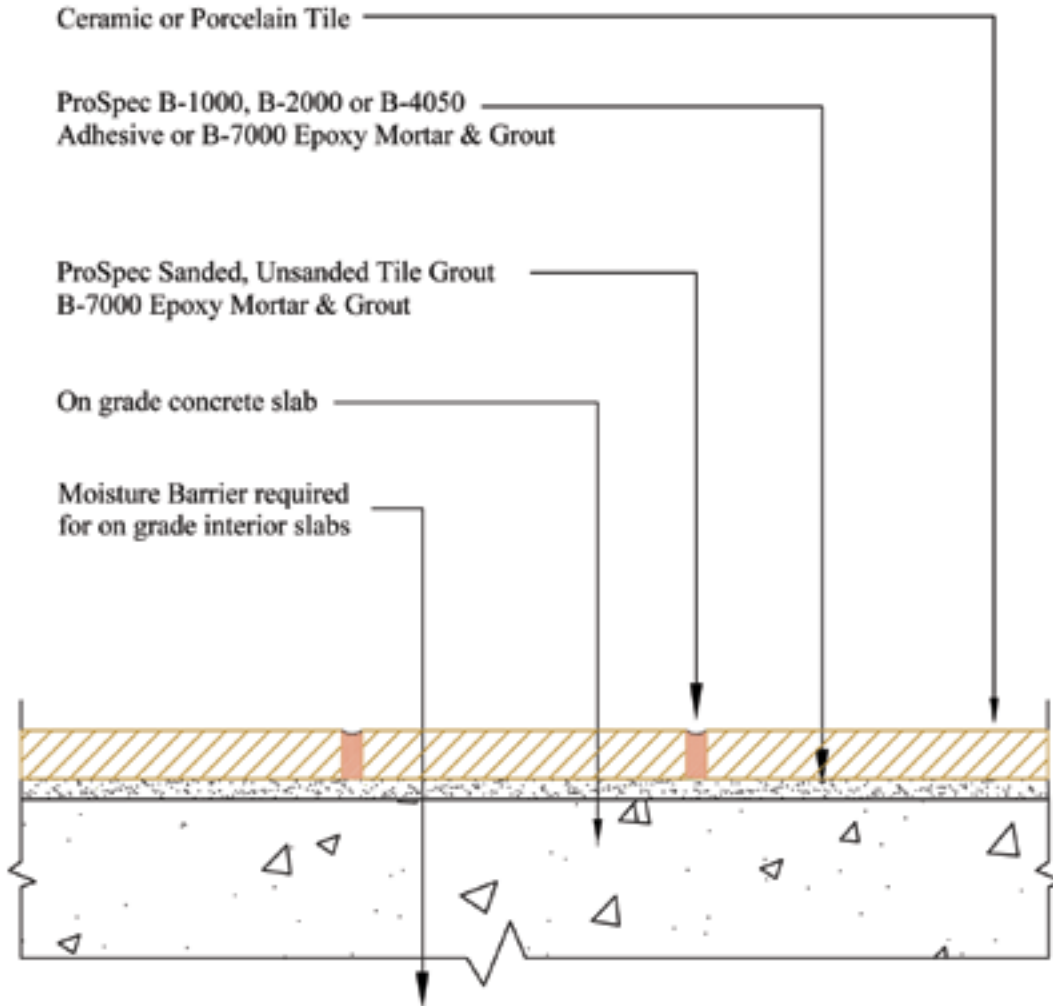
F115

# F116



## Floors, Interior

Concrete Subfloor – Organic Adhesive or Epoxy Adhesive



**NOTES:**

Refer to ProSpec Technical Data Sheet for product installation specifications.

Maximum Tile size for B-1000 is 8" x 8". Maximum Tile size for B-2000 & b-4050 12" x 12".

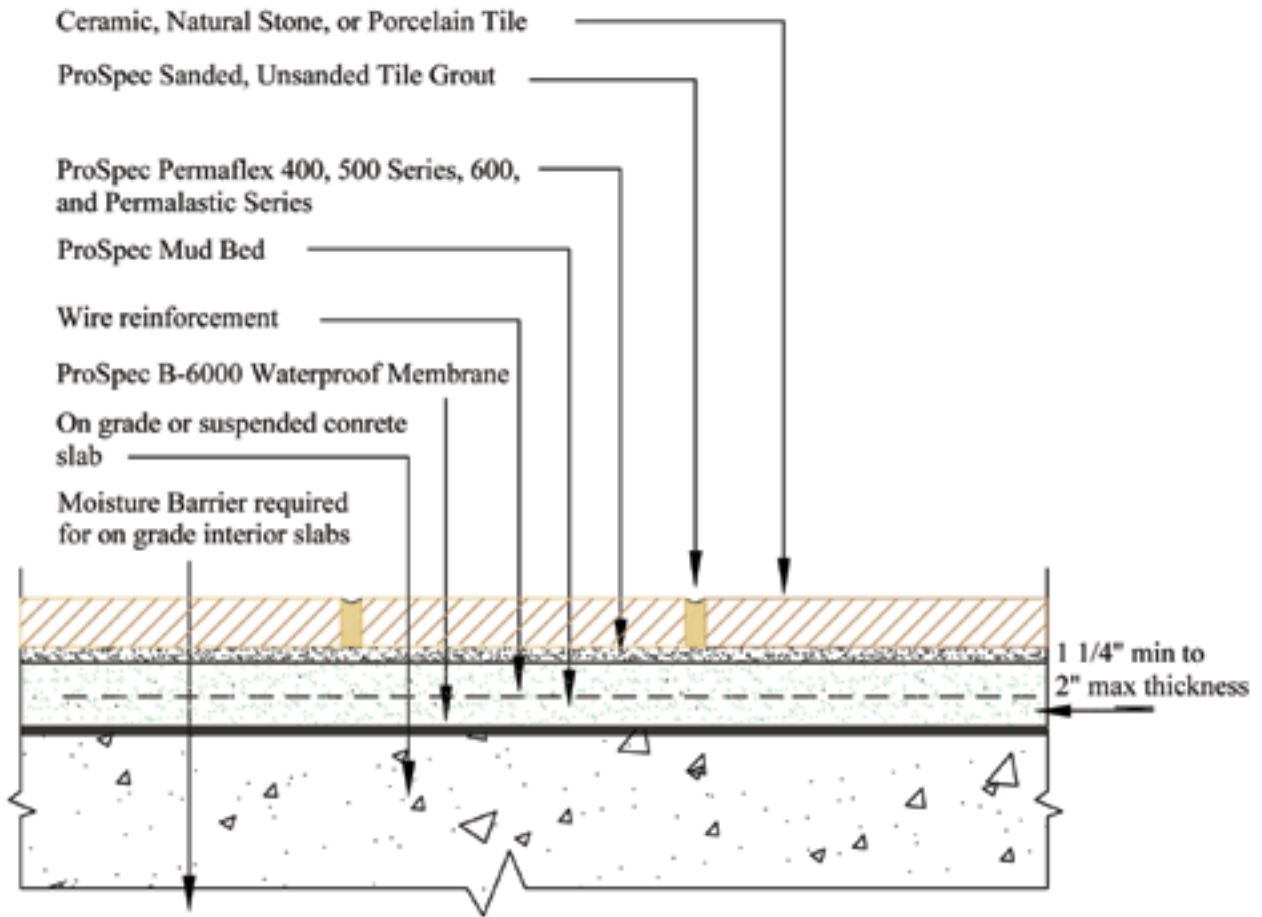
<b>Issue Date</b> 09-02-09	<u>Minimum Requirements:</u>	<b>Drawing Number</b> F116									
	<table border="1"> <thead> <tr> <th>Product</th> <th>ANSI Spec</th> <th>ISO</th> </tr> </thead> <tbody> <tr> <td>Adhesive</td> <td>136.1 or 118.3</td> <td>D1 or R1</td> </tr> <tr> <td>Grout</td> <td>118.3 - 118.6</td> <td>RG - CG1</td> </tr> </tbody> </table>	Product	ANSI Spec	ISO	Adhesive	136.1 or 118.3	D1 or R1	Grout	118.3 - 118.6	RG - CG1	
Product	ANSI Spec	ISO									
Adhesive	136.1 or 118.3	D1 or R1									
Grout	118.3 - 118.6	RG - CG1									

# F121



## Floors, Interior

Concrete Subfloor – Waterproof Membrane, Cement Mortar Bed



**NOTES:**

Refer to ProSpec Technical Data Sheet for product installation specifications.

**Issue Date**  
09-02-09

Product	Minimum Requirements:	
	ANSI Spec	ISO
Adhesive	118.4	C2
Grout	118.6	CG 1
Waterproof Membrane	118.10 - IAPMO Approval	

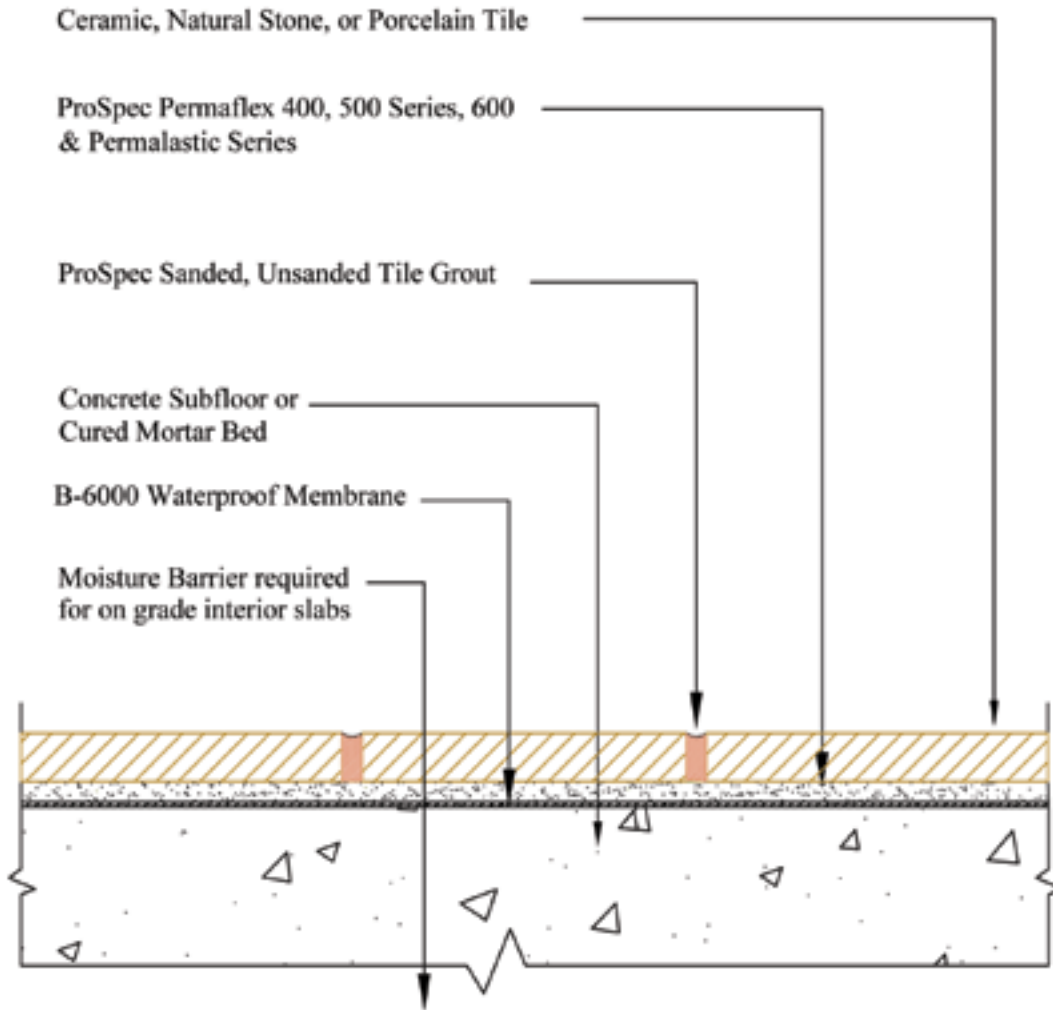
**Drawing Number**  
F121

# F122



## Floors, Interior

Concrete Subfloor – Waterproof Membrane, Thin Set



### NOTES:

Refer to ProSpec Technical Data Sheet for product installation specifications.

Issue Date  
09-04-09

Product	Minimum Requirements:	
	ANSI Spec	ISO
Adhesive	118.4	C2
Grout	118.7	CG 1
Waterproof Membrane	118.10 - IAPMO Approval	

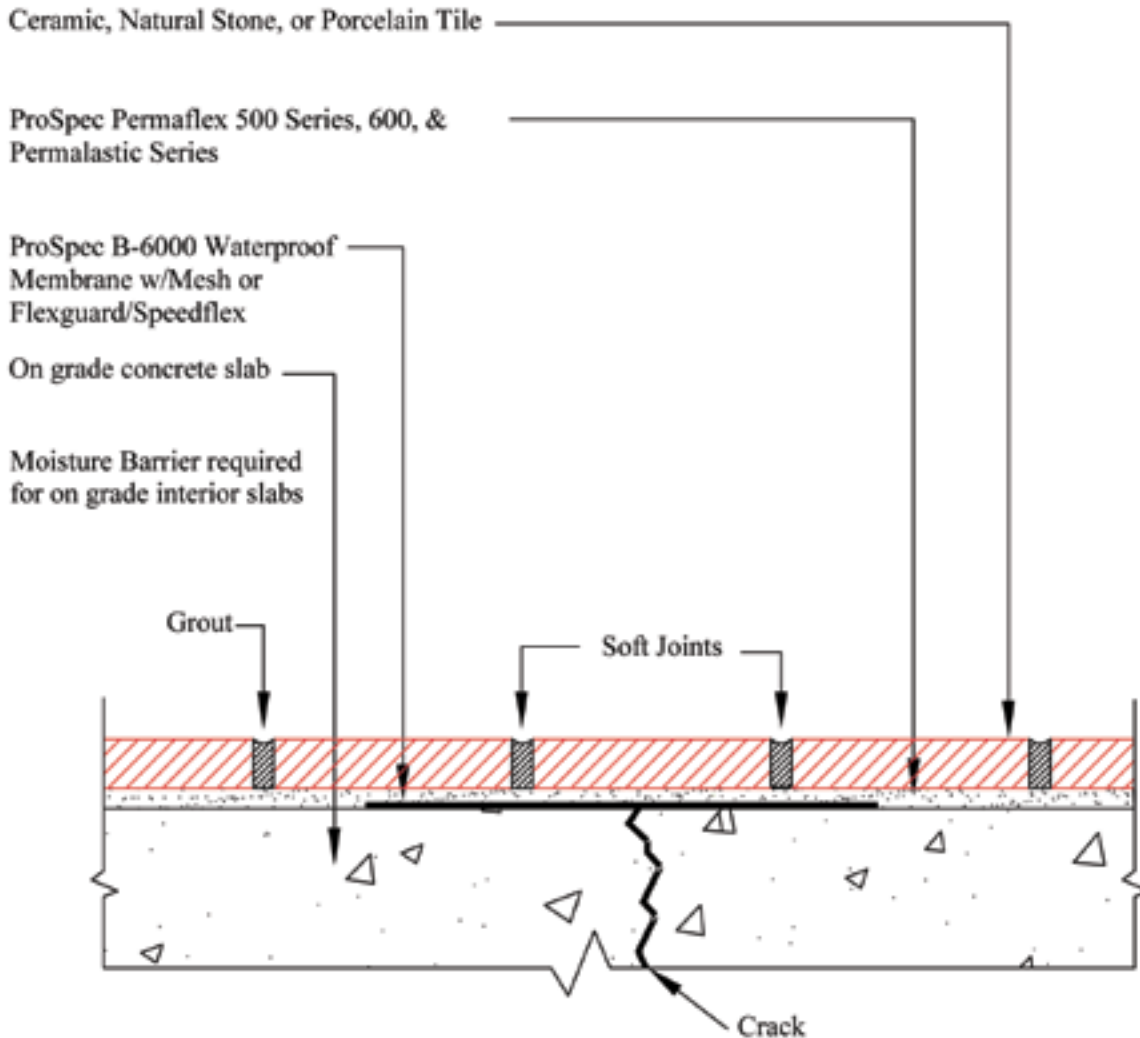
Drawing Number  
F122

# F125



## Floors, Interior

### Crack Isolation Membrane – Partial Coverage



**NOTES:**

Refer to ProSpec Technical Data Sheet for product installation specifications.

**Issue Date**  
09-04-09

Product	Minimum Requirements:	
	ANSI Spec	ISO
Adhesive	118.4	C2-S1
Grout	118.7	CG 1
Crack Isolation Mem	118.12	

**Drawing Number**  
F125

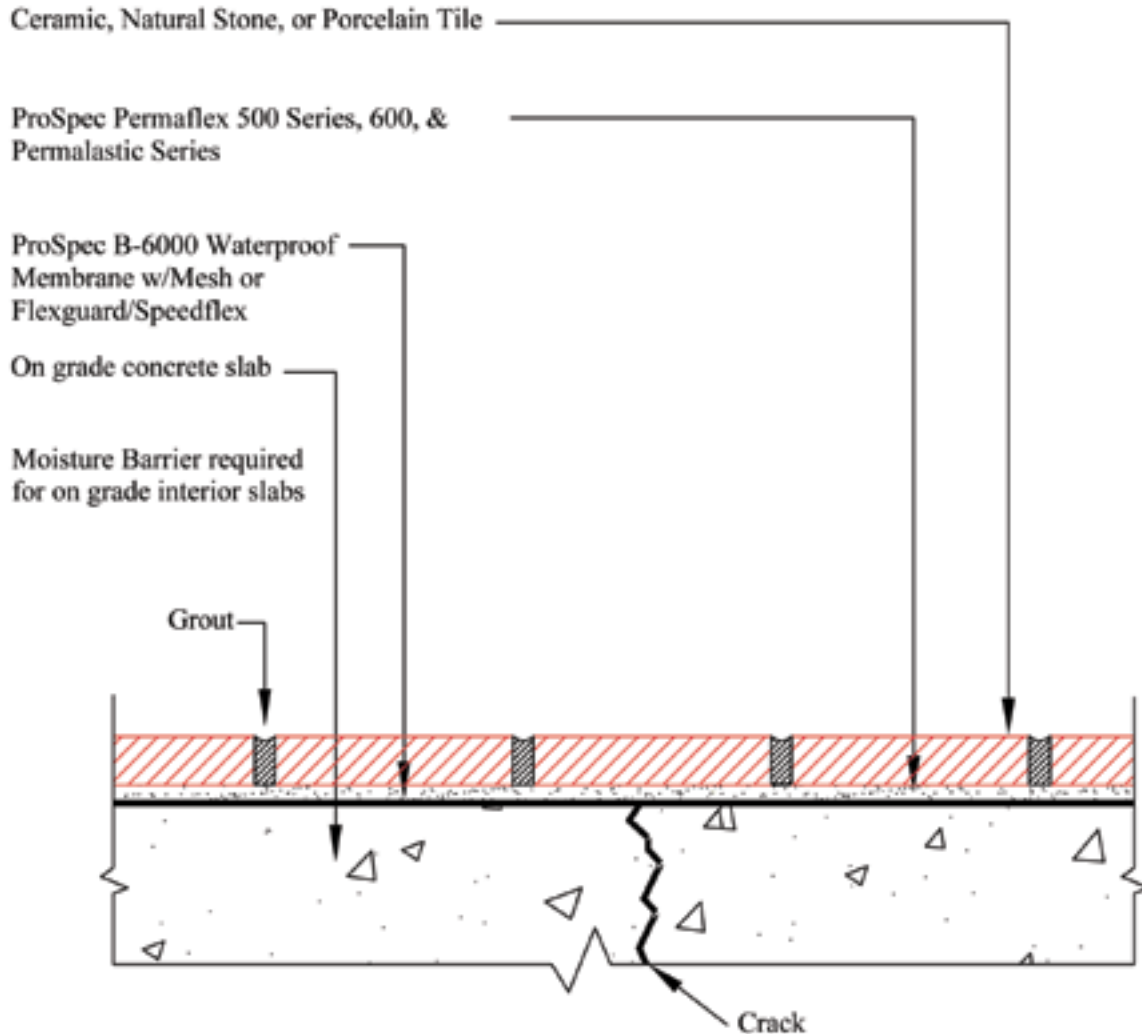


# F125A



## Floors, Interior

Crack Isolation – Full Coverage



### NOTES:

Refer to ProSpec Technical Data Sheet for product installation specifications.

Issue Date

09-04-09

### Minimum Requirements:

Product	ANSI Spec	ISO
Adhesive	118.4	C2-S1
Grout	118.7	CG 1
Crack Isolation Mem	118.12	

Drawing Number

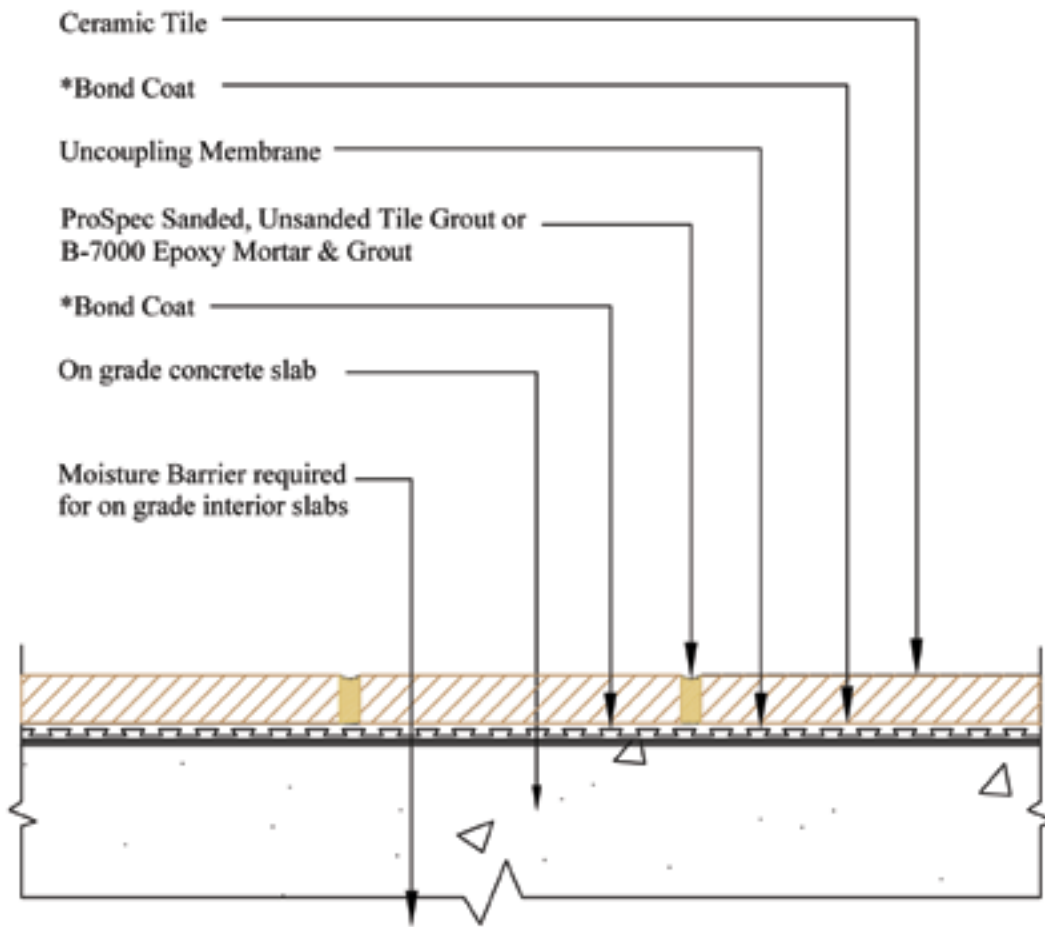
F125A

# F128



## Floors, Interior

Crack Isolation Membrane – Young Concrete, Uncoupling Membrane



### NOTES:

Refer to ProSpec Technical Data Sheet for product installation specifications.

\* Refer to coupling manufacturer's recommendation for use of thin set mortar

**Issue Date**  
09-04-09

Product	Minimum Requirements:	
	ANSI Spec	ISO
Adhesive	Manufacturer's recommendation	
Grout	118.3 - 118.7	CG1 - RG

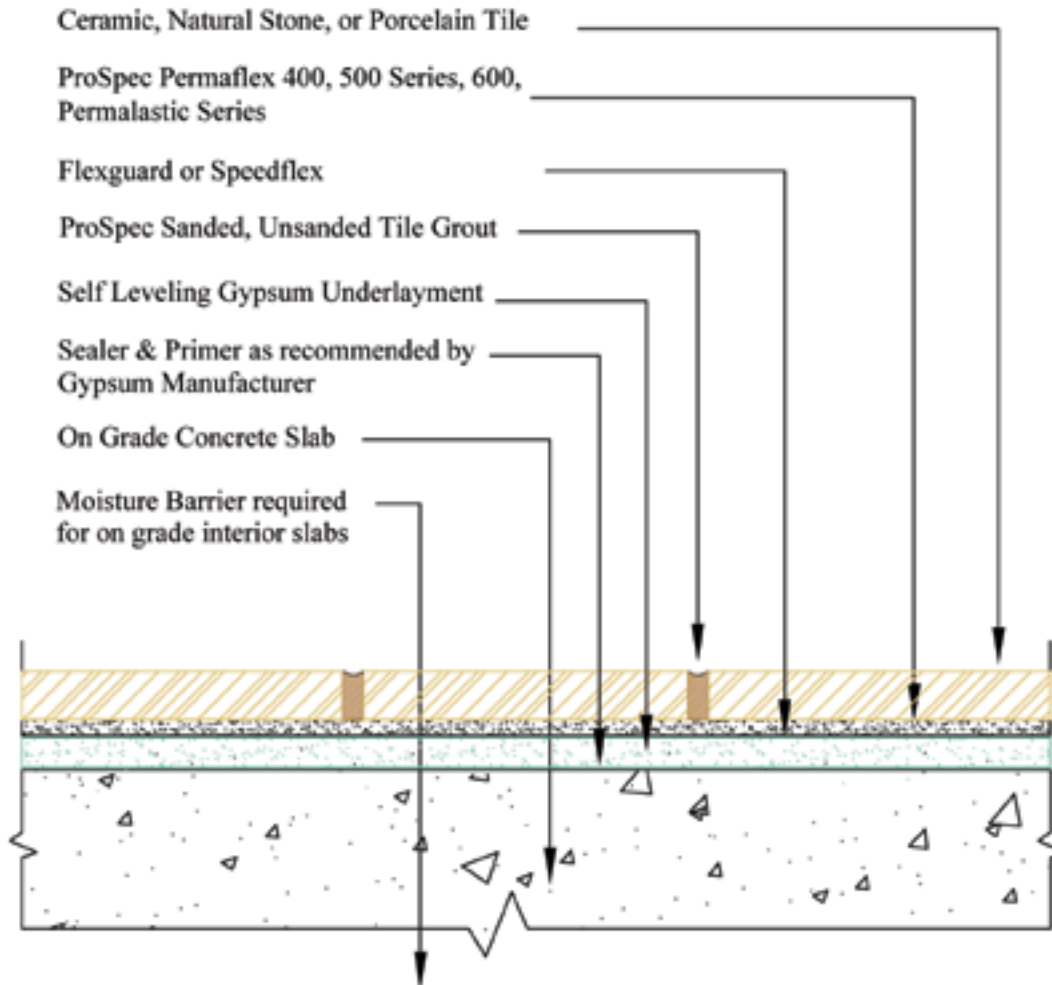
**Drawing Number**  
F128

# F200



## Floors, Interior

Concrete Subfloor – Poured Gypsum Underlayment, Bonded



**NOTES:**

Refer to ProSpec Technical Data Sheet for product installation specifications.

**Issue Date**

09-08-09

Minimum Requirements:

Products	ANSI Spec	ISO
Adhesives	118.4	C2
Grout	118.6	CG 1
Waterproof Membrane	118.10 - IAPMO Approval	

**Drawing Number**

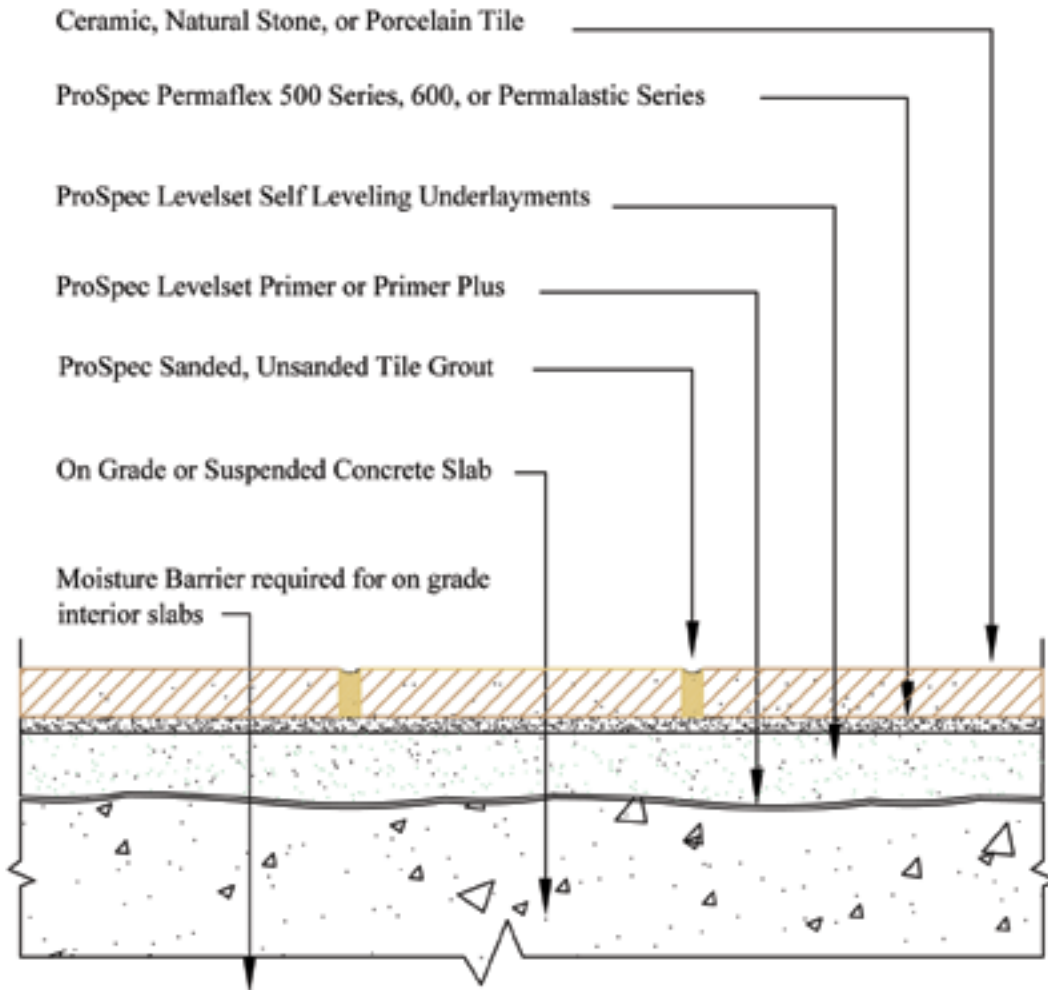
F200

# F205



## Floors, Interior

Concrete Subfloor – Cementitious Self Leveling Underlayment, Bonded



### NOTES:

Refer to ProSpec Technical Data Sheet for product installation specifications.

#### Issue Date

09-08-09

#### Minimum Requirements:

Product	ANSI Spec	ISO
Adhesive	118.4	C2-S1
Grout	118.6	CG 1

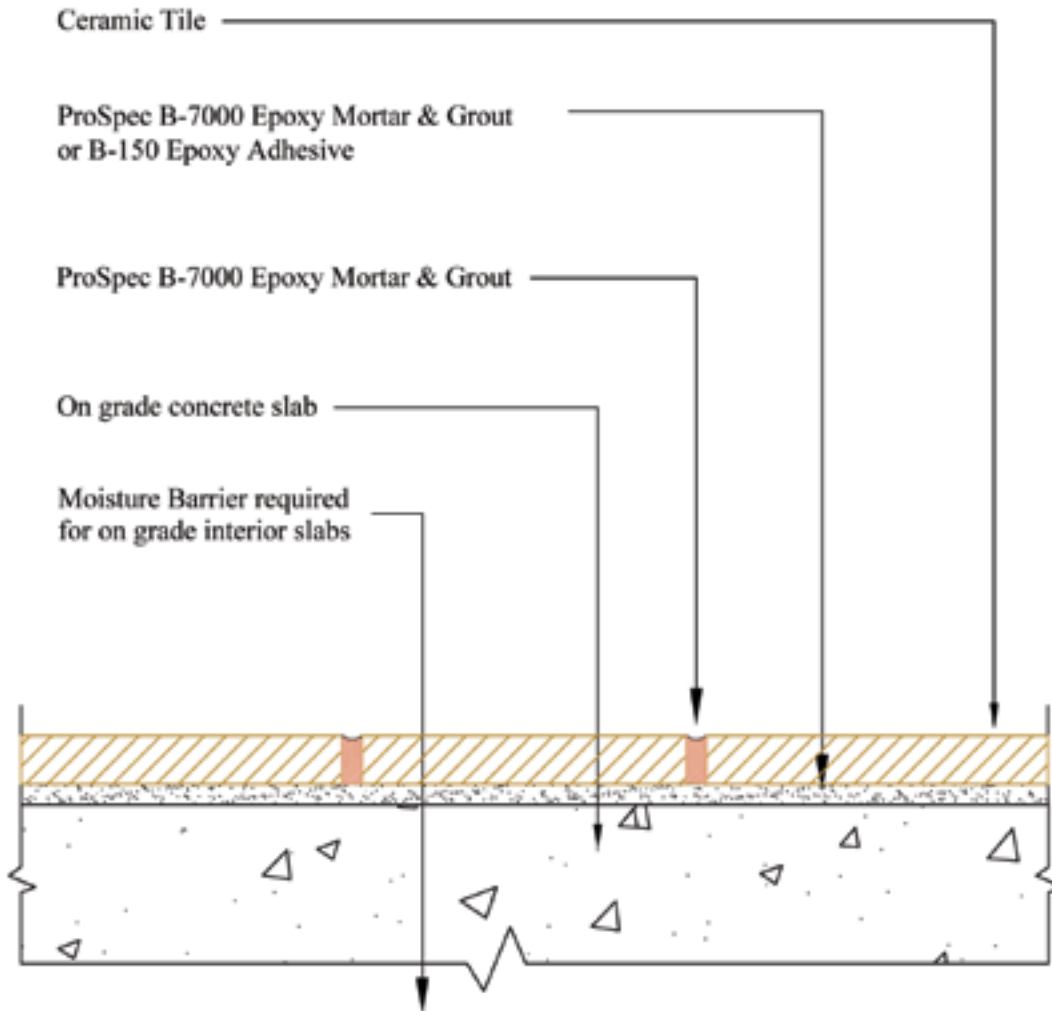
#### Drawing Number

F205

# F131



## Floors, Interior – Chemical Resistant Concrete Subfloor – Epoxy Mortar and Grout



### NOTES:

Refer to ProSpec Technical Data Sheet for product installation specifications.

Issue Date

09-08-09

#### Minimum Requirements:

Product	Minimum Requirements:	
	ANSI Spec	ISO
Adhesive	118.3	R
Grout	118.3	RG

Drawing Number

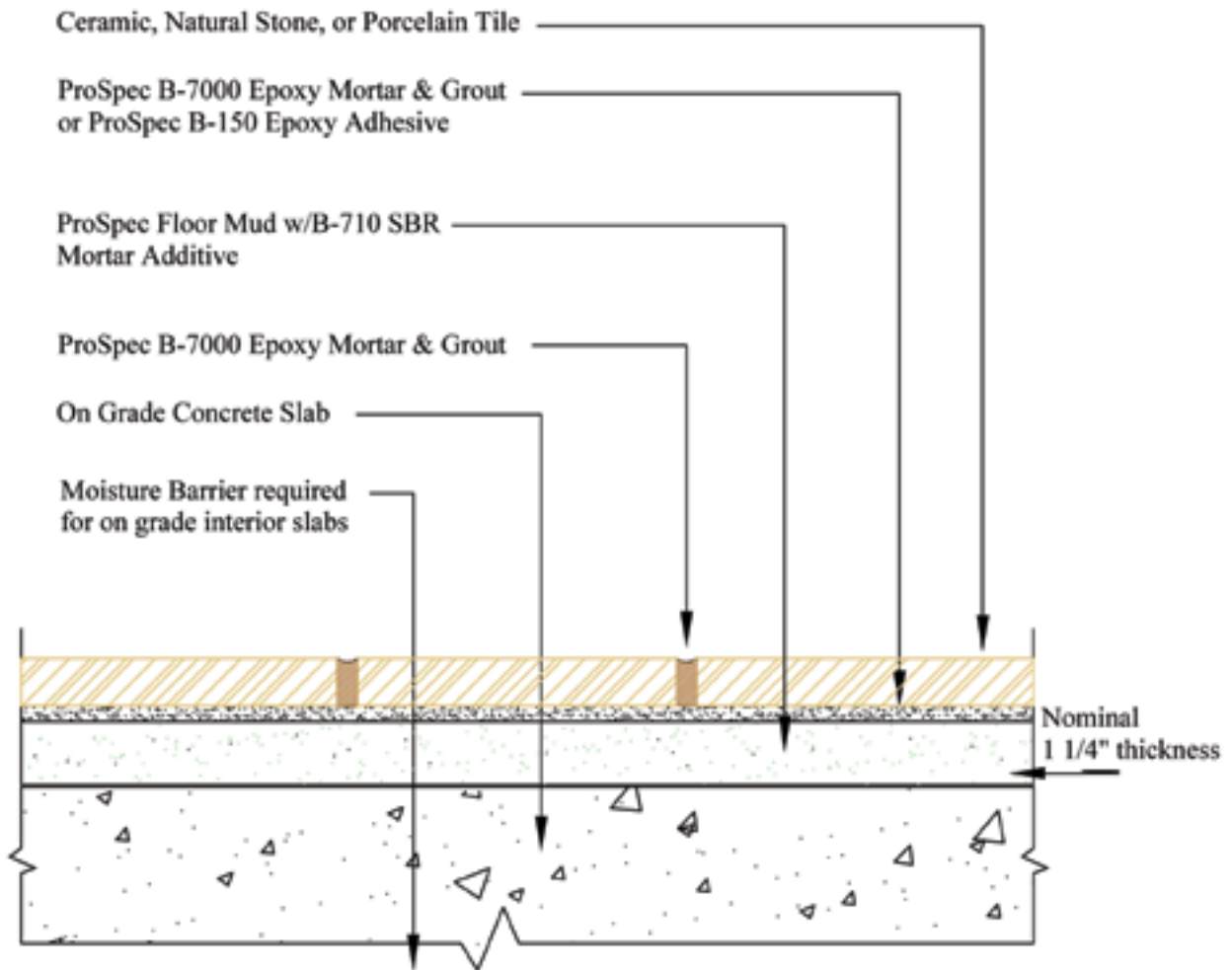
F131

# F132



## Floors, Interior – Chemical Resistant

Concrete Subfloor – Epoxy Mortar and Grout on a Cementitious Mortar Bed



**NOTES:**

Refer to ProSpec Technical Data Sheet for product installation specifications.

**Issue Date**  
09-08-09

Product	Minimum Requirements:	
	ANSI Spec	ISO
Adhesive	118.3	R
Grout	118.3	RG

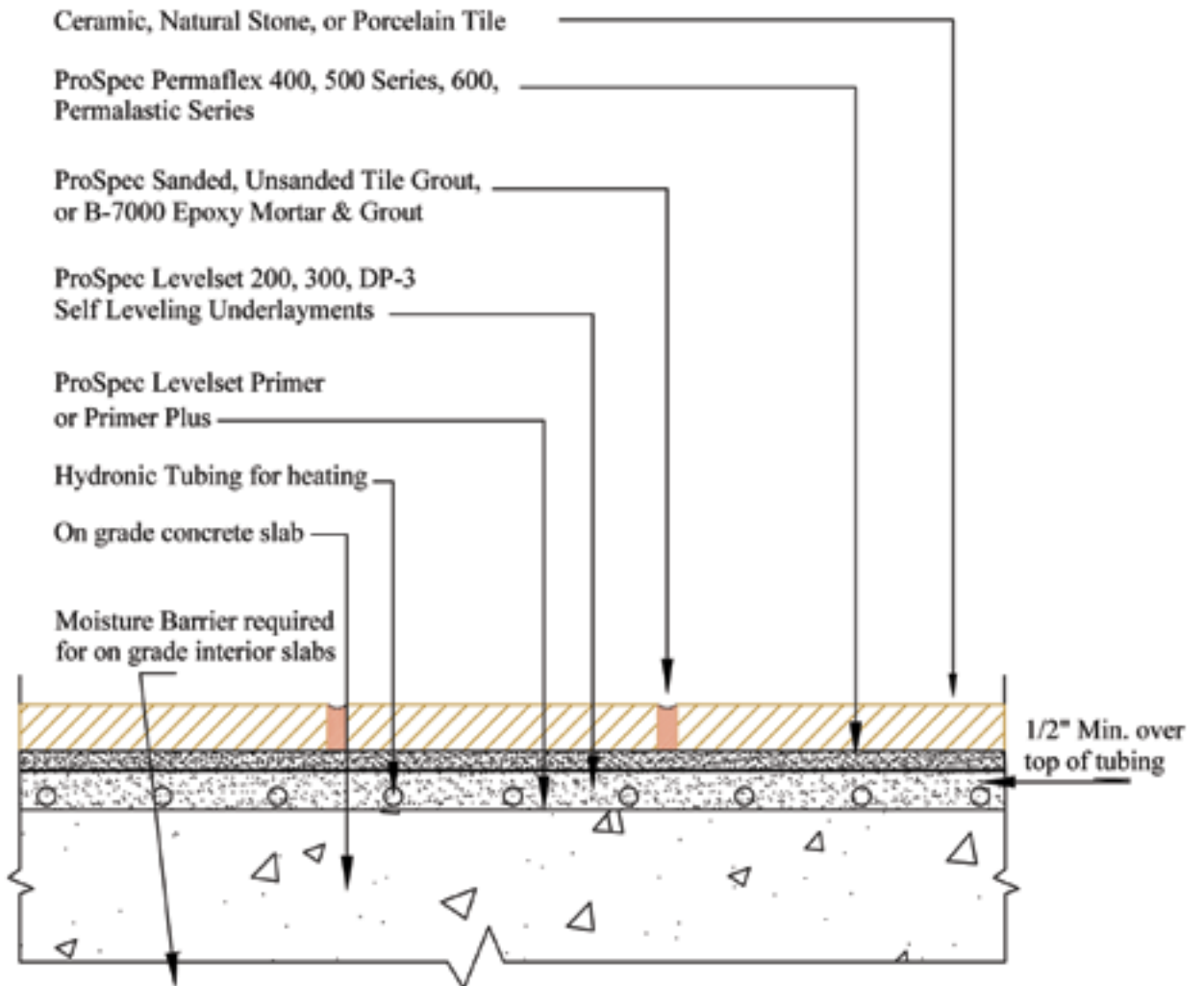
**Drawing Number**  
F132

# RH112



## Floors, Interior

Radiant Heat on Concrete: Cementitious Self-Leveling Underlayment, Hydronic System, Thin Set



**NOTES:**

Refer to ProSpec Technical Data Sheet for product installation specifications.

**Issue Date**  
09-08-09

Products	Minimum Requirements:	
	ANSI Spec	ISO
Adhesive	118.4	C2
Grout	118.3 - 118.6	RG - CG1

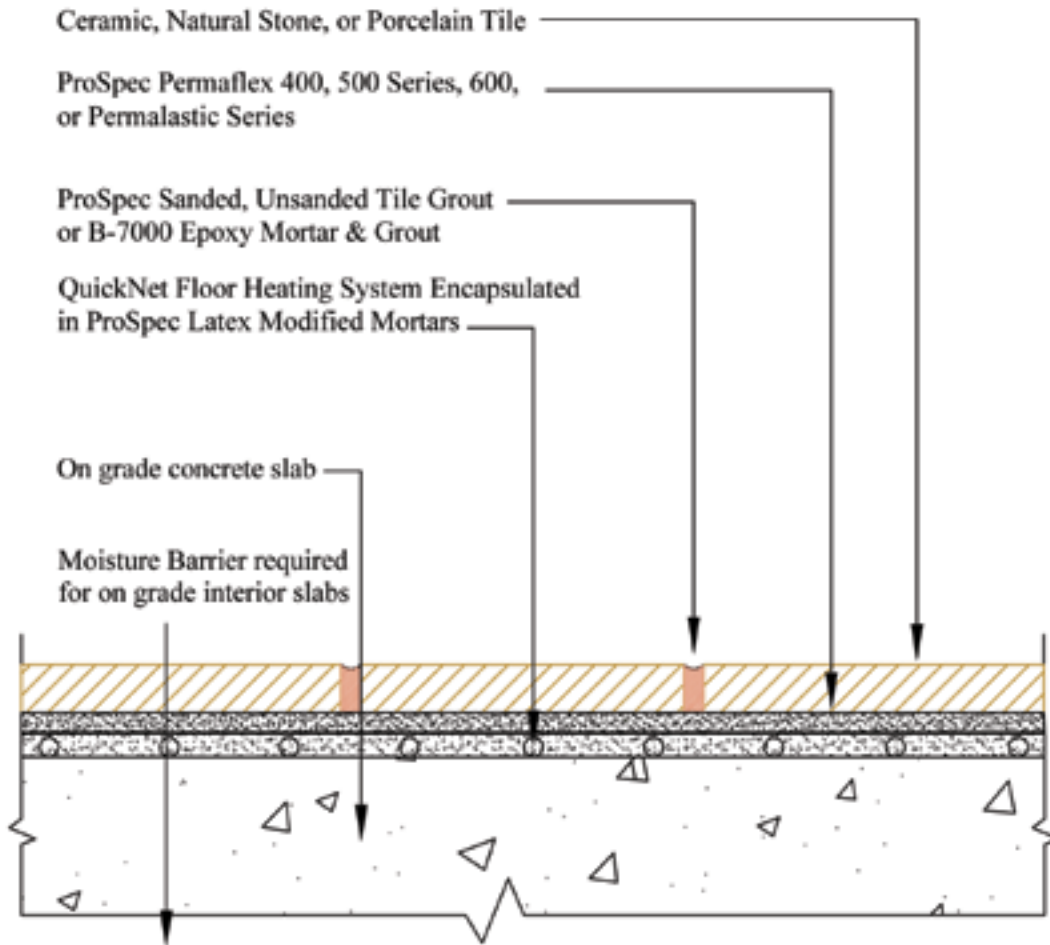
**Drawing Number**  
RH112

# RH115



## Floors, Interior

Radiant Heat on Concrete – Latex-Portland Cement Mortar, Electric System



### NOTES:

Refer to ProSpec Technical Data Sheet for product installation specifications.

**Issue Date**

09-08-09

### Minimum Requirements:

Products	ANSI Spec	ISO
Adhesive	118.4	C2
Grout	118.3 - 118.6	RG - CG1

**Drawing Number**

RH115

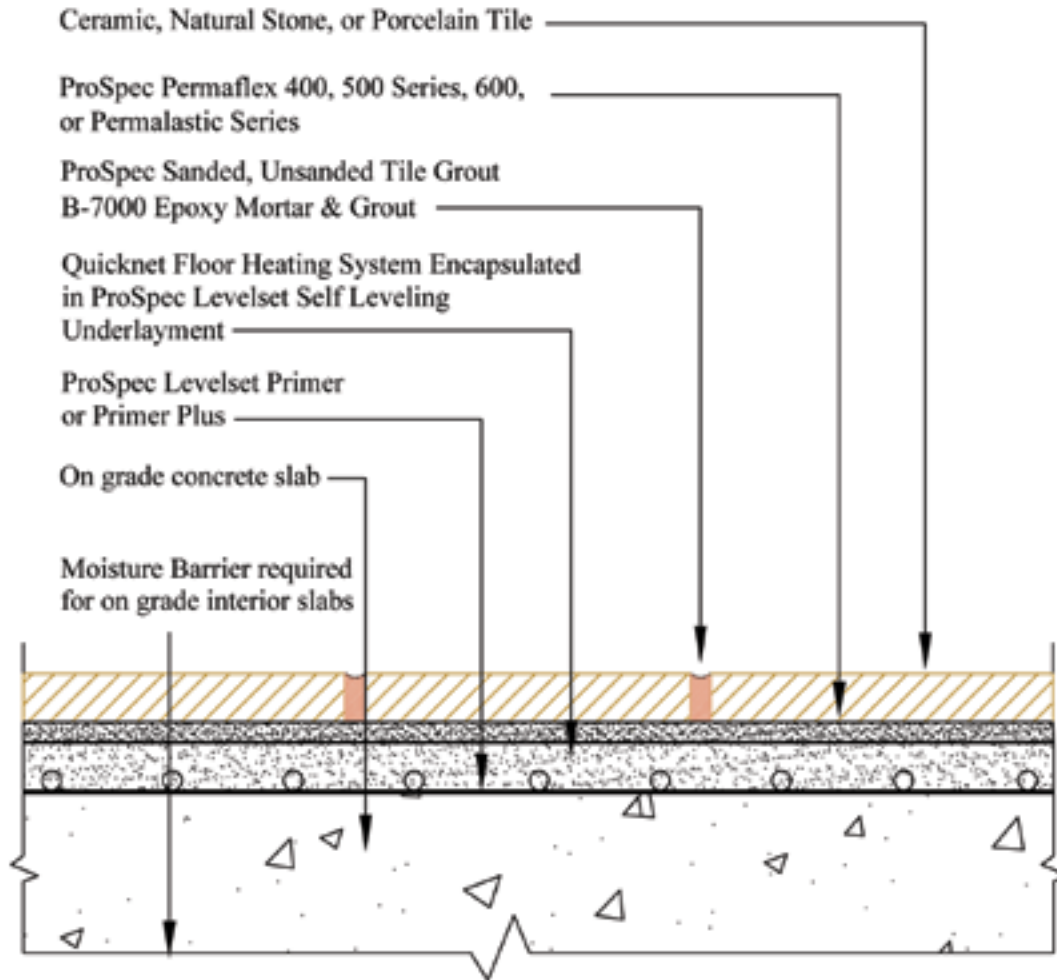


# RH116



## Floors, Interior

Radiant Heat on Concrete: Cementitious Self-Leveling Underlayment, Bonded Electric System, Thin Set



**NOTES:**

Refer to ProSpec Technical Data Sheet for product installation specifications.

**Issue Date**

09-08-09

Minimum Requirements:

Product	ANSI Spec	ISO
Adhesive	118.4	C2
Grout	118.3 - 118.6	RG - CG1

**Drawing Number**

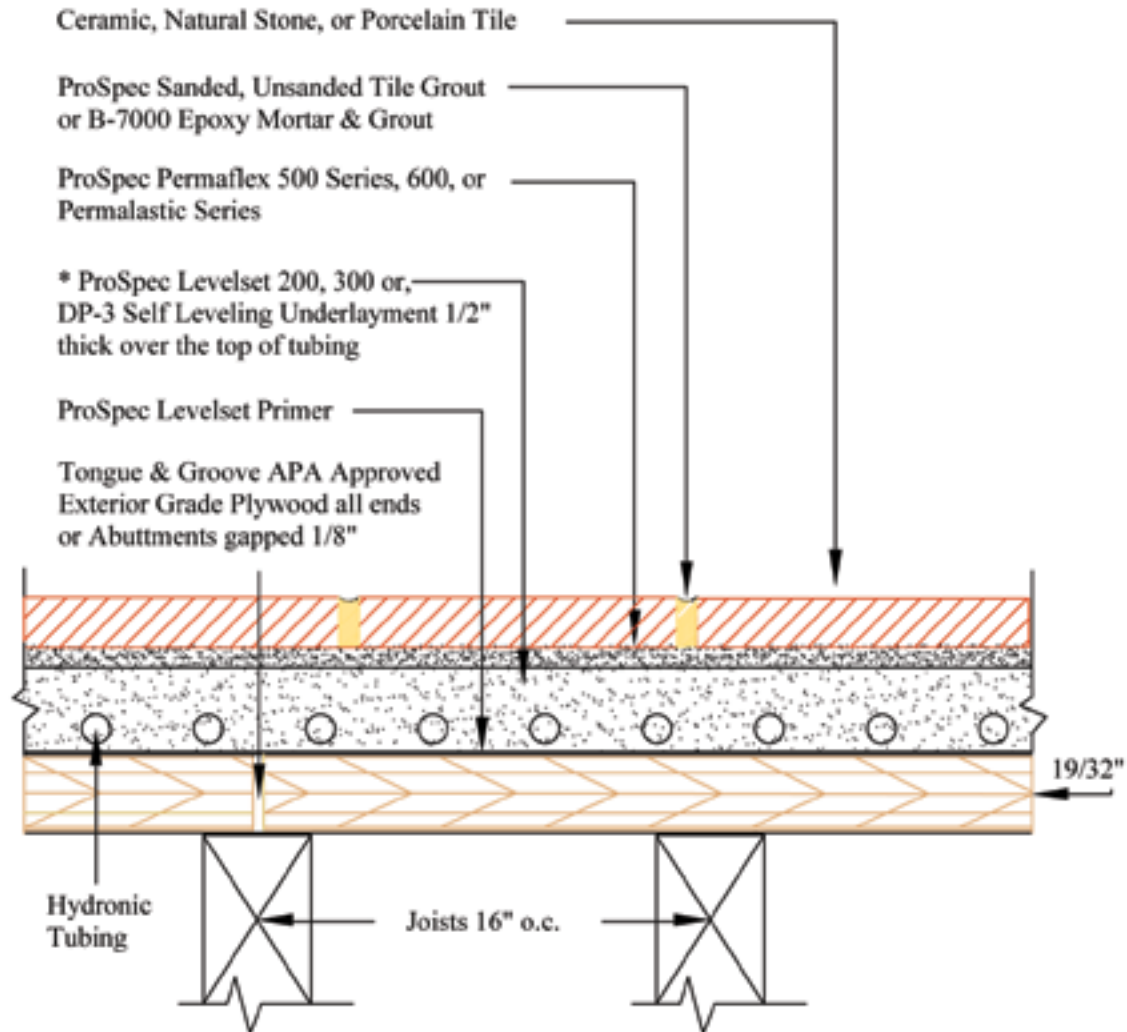
RH116

# RH123



## Floors, Interior

### Radiant Heat on Wood Subfloor – Cementitious Self Leveling Underlayment



**NOTES:**

Refer to ProSpec Technical Data Sheet for product installation specifications.

\* Add Levelset Primer to Levelset Self Leveling Underlayment over wood floors as specified in the product Technical Data Sheet.

**Issue Date**  
09-08-09

Minimum Requirements:		
Product	ANSI Spec	ISO
Adhesive	118.4	C2-S1
Grout	118.3 - 118.6	RG - CG1

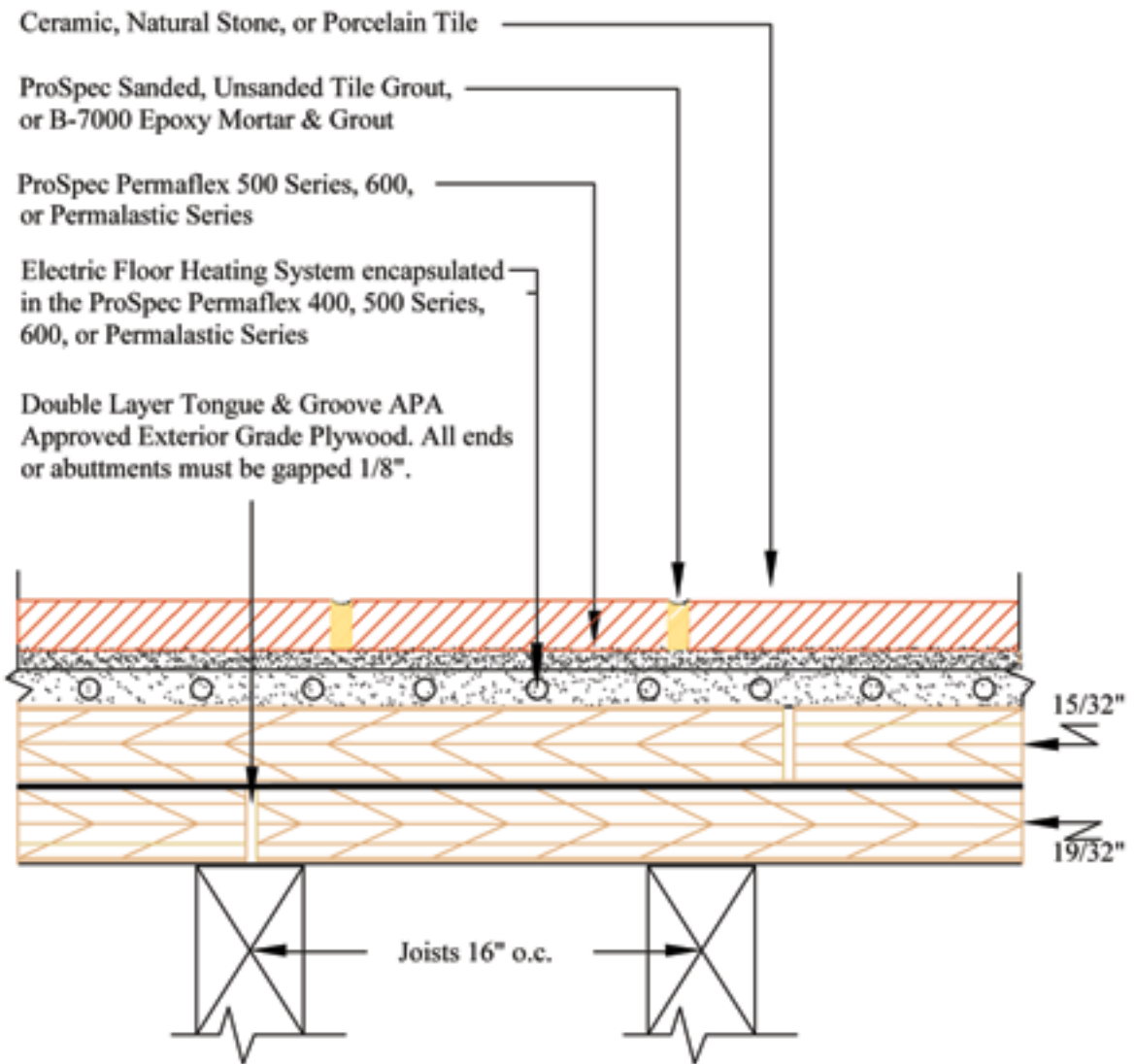
**Drawing Number**  
RH123

# RH130



## Floors, Interior – Dry Applications

Radiant Heat on Wood Subfloor: EGP (Exterior Glue Plywood) Latex-Portland Cement Mortar Electric System



**NOTES:**

Refer to ProSpec Technical Data Sheet for product installation specifications.

**Issue Date**

09-08-09

Minimum Requirements:

Product	ANSI Spec	ISO
Adhesive	118.11	C2-S1-P1
Grout	118.3 - 118.6	RG - CG1

**Drawing Number**

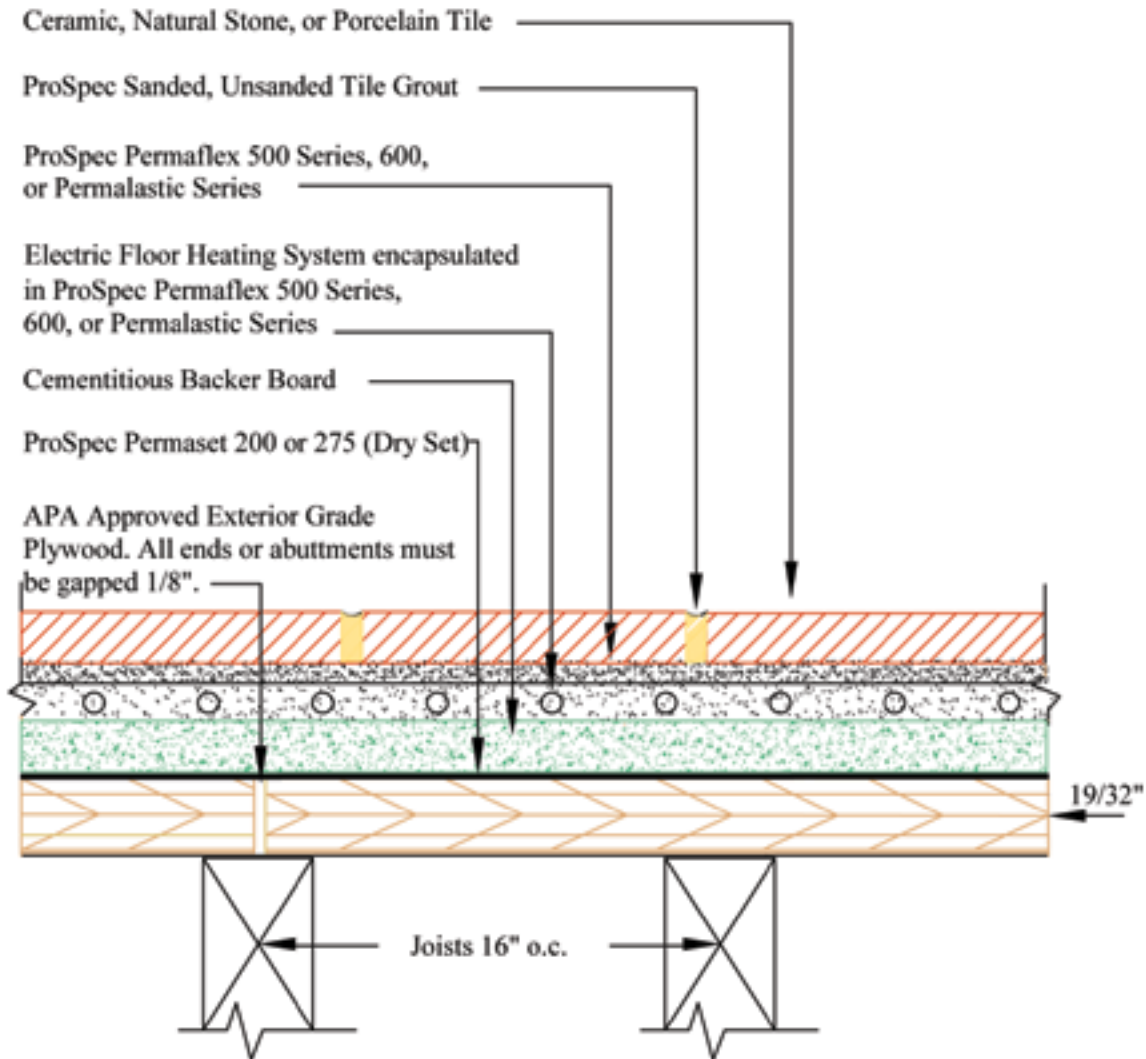
RH130

# RH135



## Floors, Interior – Dry Applications

Radiant Heat on Wood Subfloor: Backer Board Electric System, Thin Set



**NOTES:**

Refer to ProSpec Technical Data Sheet for product installation specifications.

**Issue Date**

09-10-09

Minimum Requirements:

Product	ANSI Spec	ISO
Adhesive	118.4	C2-S1
Grout	118.3 - 118.6	RG - CG1
Backer Board Setting bed	118.1	C1

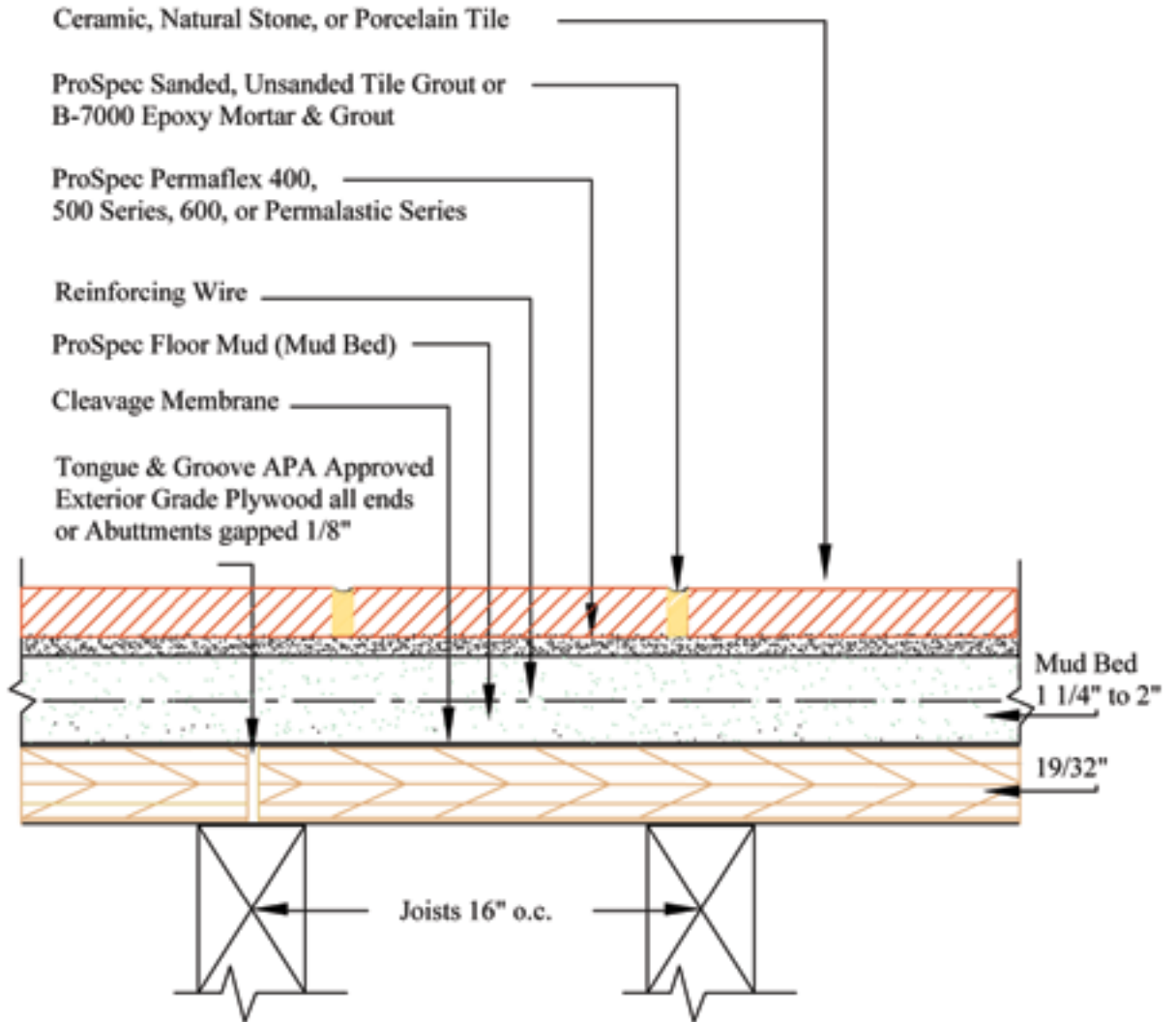
**Drawing Number**

RH135

# F141

## Floors, Interior

### Wood Subfloor – Cement Mortar



**NOTES:**

Refer to ProSpec Technical Data Sheet for product installation specifications.

**Issue Date**

09-10-09

Minimum Requirements:

Product	ANSI Spec	ISO
Adhesive	118.4	C2
Grout	118.3 - 118.6	RG - CG1

**Drawing Number**

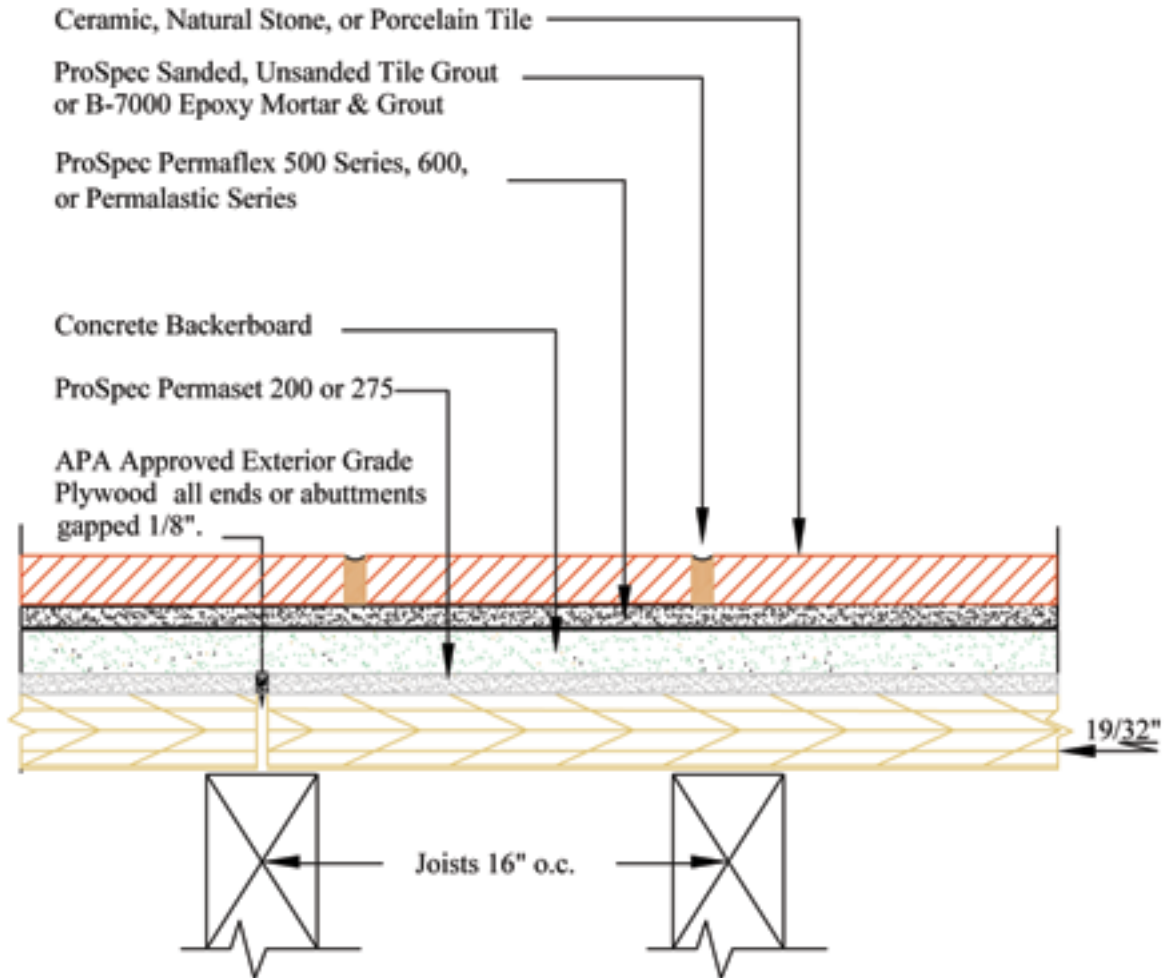
F141

# F144



## Floors, Interior

Wood Subfloor: Cementitious Backer Unit / Fiber Cement Underlayment, Thin Set



**NOTES:**

Refer to ProSpec Technical Data Sheet for product installation specifications.

**Issue Date**

09-10-09

Minimum Requirements:

Product	ANSI Spec	ISO
Adhesive	118.4	C2
Grout	118.3 - 118.6	RG - CG1
Backer Board Setting bed	118.1	C1

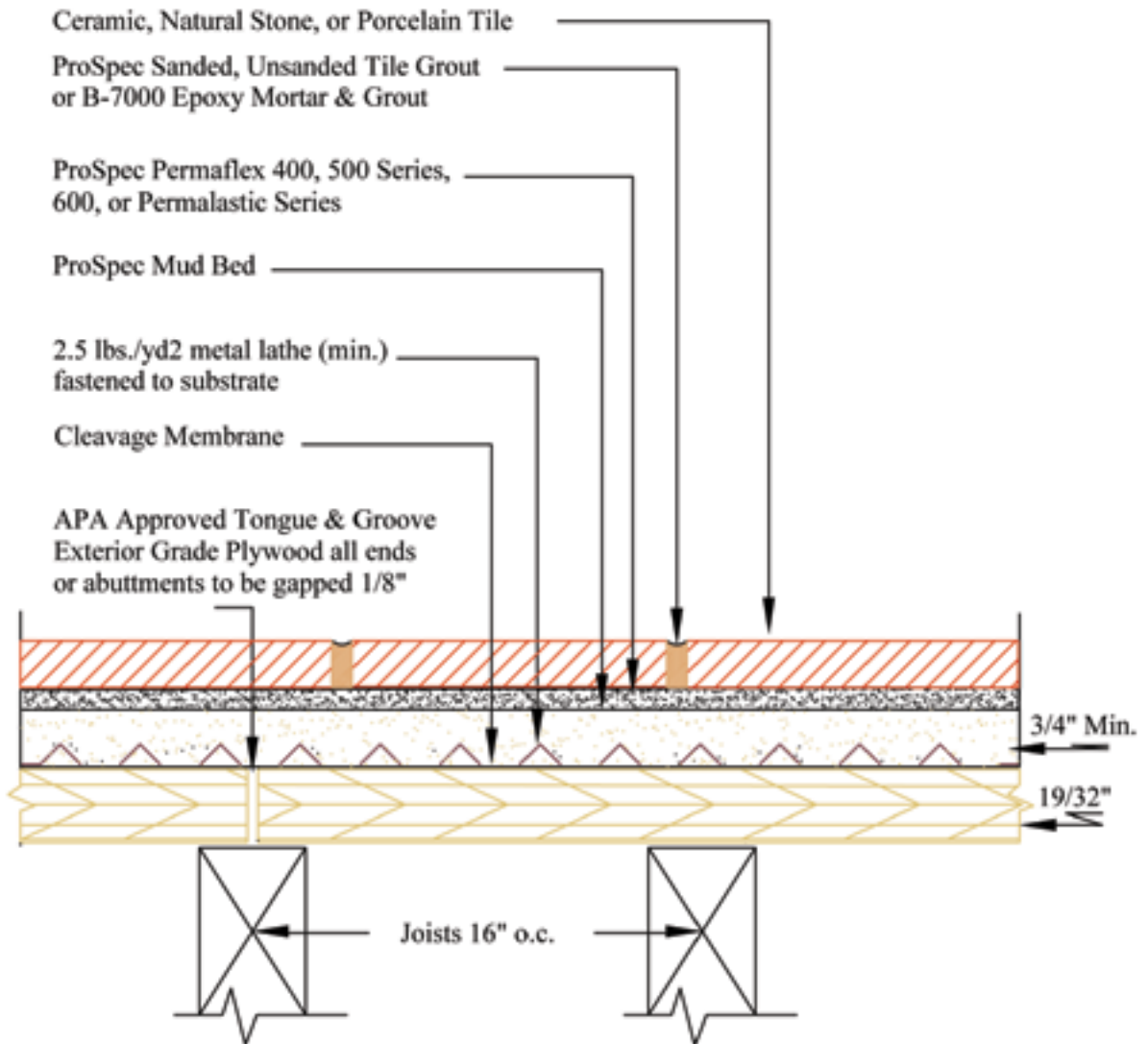
**Drawing Number**

F144

# F145

## Floors, Interior

Wood Subfloor – Cement Mortar, Metal Lath



**NOTES:**

Refer to ProSpec Technical Data Sheet for product installation specifications.

**Issue Date**  
09-10-09

Product	Minimum Requirements:	
	ANSI Spec	ISO
Adhesive	118.4	C2
Grout	118.3 - 118.6	RG - CG1

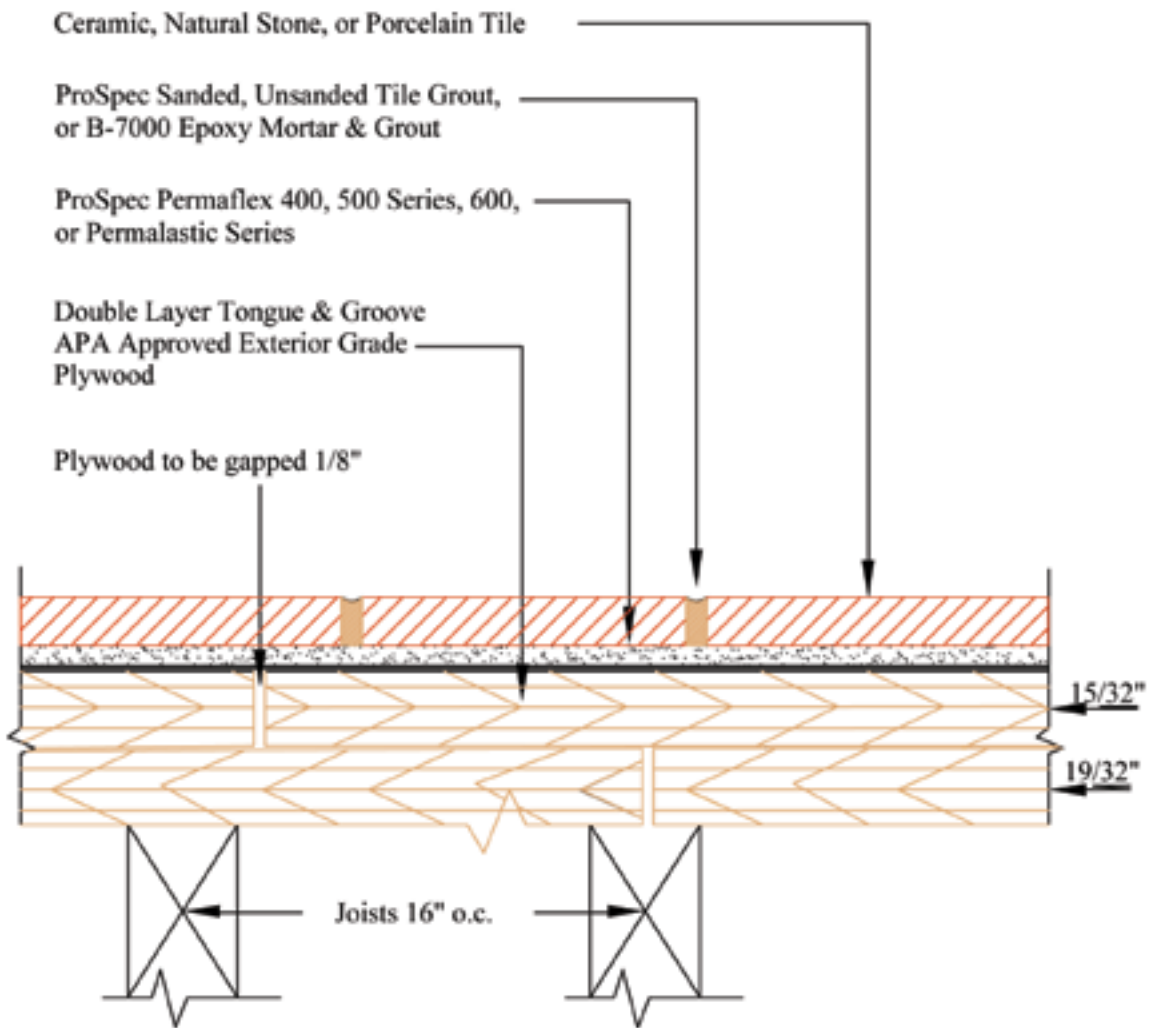
**Drawing Number**  
F145

# F150



## Floors, Interior

Wood Subfloor: Plywood Underlayment EGP Latex-Portland Cement Mortar



**NOTES:**

Refer to ProSpec Technical Data Sheet for product installation specifications.

**Issue Date**  
09-10-09

Product	Minimum Requirements:	
	ANSI Spec	ISO
Adhesive	118.4	C2-P1
Grout	118.3 - 118.6	RG - CG1

**Drawing Number**  
F150

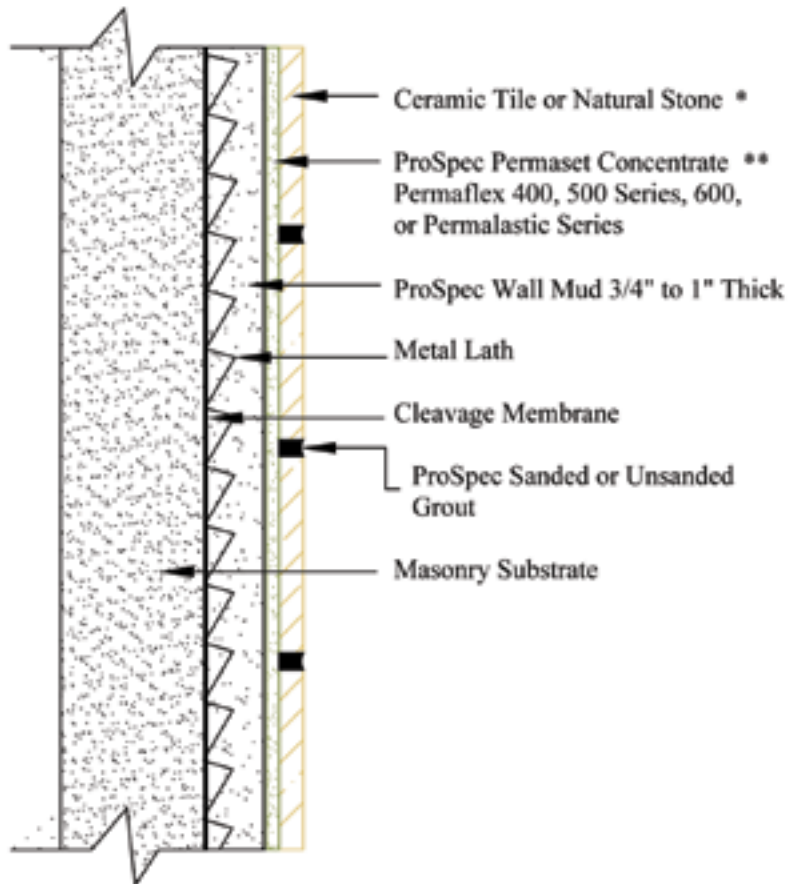


# W201



## Walls, Exterior & Interior

Masonry: Cement Mortar



### NOTES:

Refer to ProSpec Technical Data Sheet for product installation specifications.

\* Procelain tile requires thin set mortar meeting 118.4

\*\* Wet set method for interior applications only - 118.1

**Issue Date**

09-22-09

### Minimum Requirements:

Product	ANSI Spec	ISO
Adhesive	118.4	C2
Grout	118.6 - 118.7	CG1

**Drawing Number**

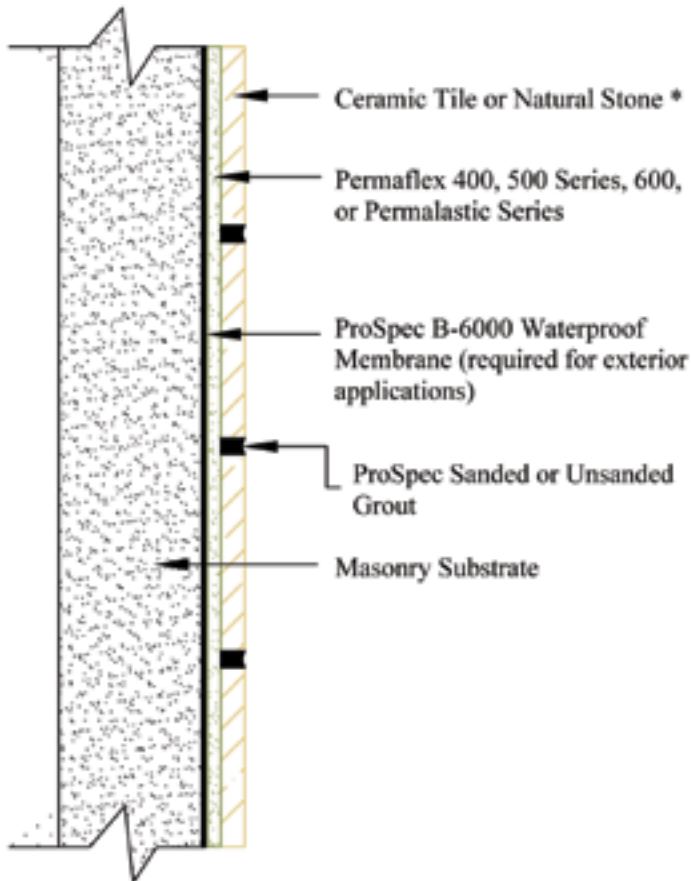
W201

# W202



## Walls, Exterior & Interior

Masonry: Dry Set Mortar or Latex Portland Cement Mortar



### NOTES:

Refer to ProSpec Technical Data Sheet for product installation specifications.

\* Porcelain tile requires thin set mortar meeting 118.4

Issue Date

09-22-09

#### Minimum Requirements:

Product	ANSI Spec	ISO
Adhesive	118.4	C2
Grout	118.3 - 118.6 - 118.7	RG - CGI
Waterproof Membrane	118.10 - IAPMO Approval	

Drawing Number

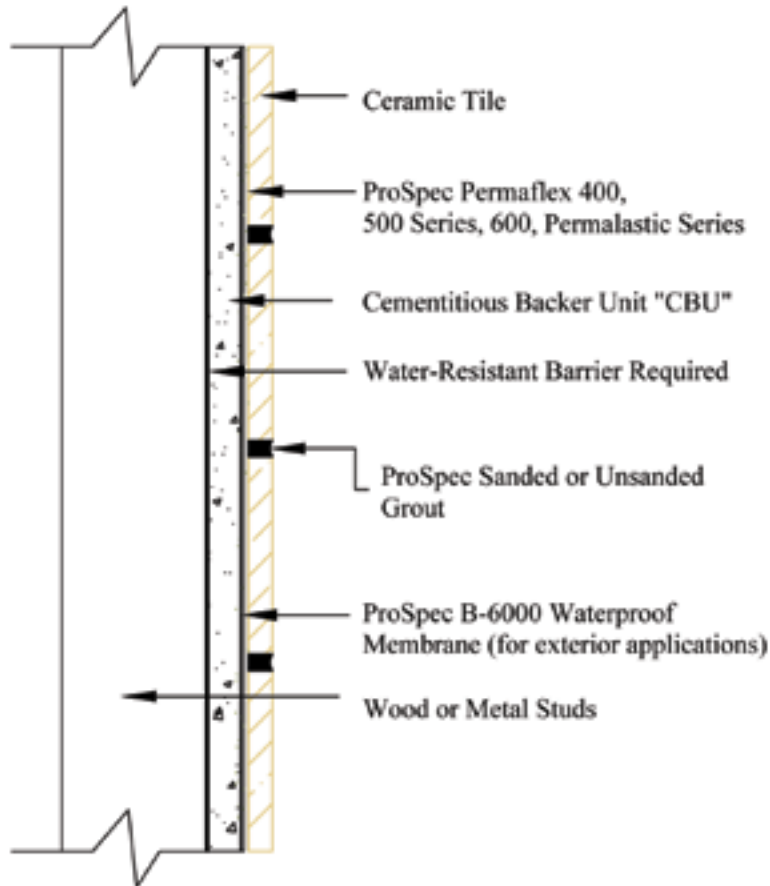
W202

# W244E



## Walls, Exterior & Interior

Wood or Metal Studs: Cementitious Backer Unit, Thin Set



### NOTES:

Refer to ProSpec Technical Data Sheet for product installation specifications.

**Issue Date**  
10-09-09

Product	Minimum Requirements:	
	ANSI Spec	ISO
Adhesive	118.4	C2
Grout	118.6 - 118.7	CG1

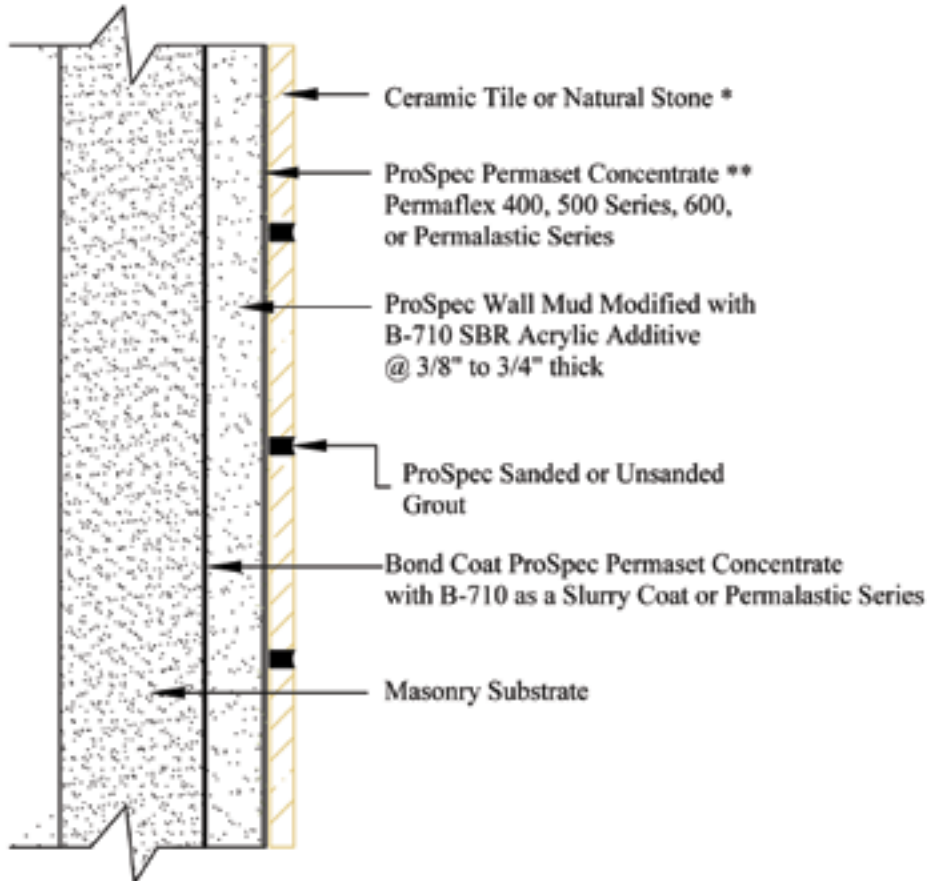
**Drawing Number**  
W244E

# W211



## Walls, Interior

Masonry or Concrete: Cement Mortar, Bonded



**NOTES:**

Refer to ProSpec Technical Data Sheet for product installation specifications.

\* Procelain tile requires thin set mortar meeting 118.4

\*\* Wet set method

**Issue Date**

09-24-09

Minimum Requirements:

Product	Minimum Requirements:	
	ANSI Spec	ISO
Adhesive	118.4	C2
Grout	118.6 - 118.7	CG1

**Drawing Number**

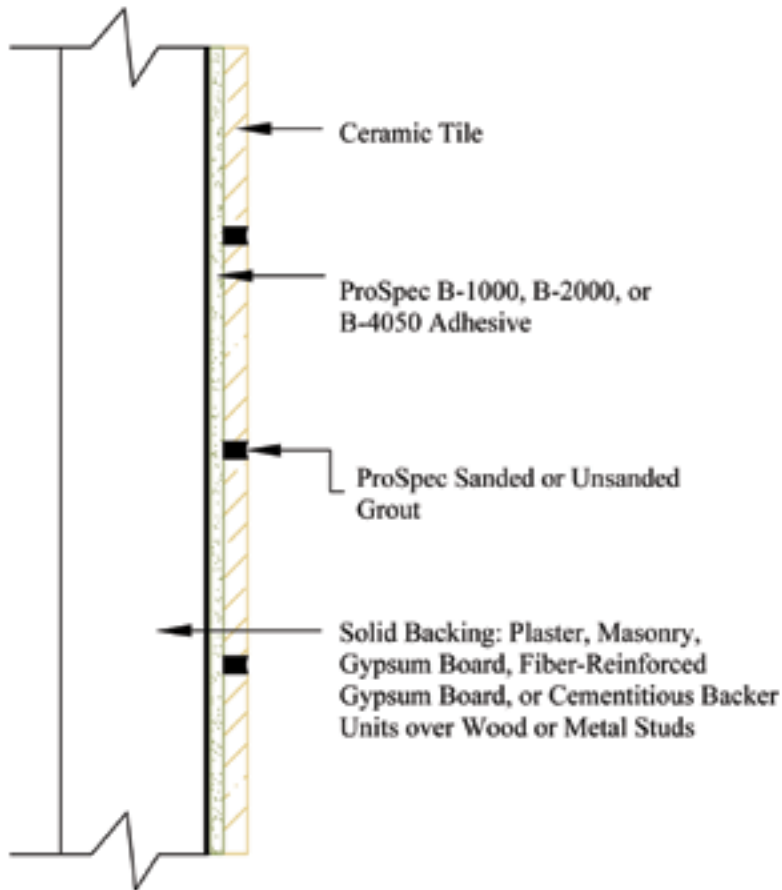
W211

# W223



## Walls, Interior

Solid Backing: Organic Adhesive



### NOTES:

Refer to ProSpec Technical Data Sheet for product installation specifications.

#### Issue Date

09-29-09

#### Minimum Requirements:

Product	ANSI Spec	ISO
Adhesive	A136.1	D1
Grout	118.6 - 118.7	CG1

#### Drawing Number

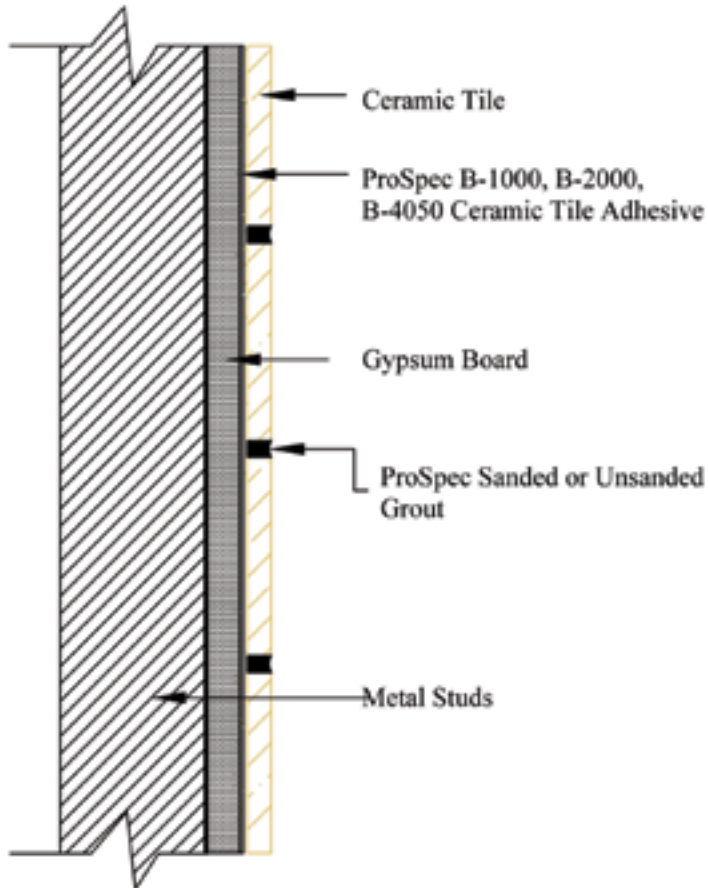
W223

# W242



## Walls, Interior

Metal Studs: Gypsum Board, Organic Adhesive



### NOTES:

Refer to ProSpec Technical Data Sheet for product installation specifications.

\* For dry areas only

**Issue Date**

10-07-09

### Minimum Requirements:

Product	ANSI Spec	ISO
Adhesive	A136.1	D1
Grout	118.6 - 118.7	CG1

**Drawing Number**

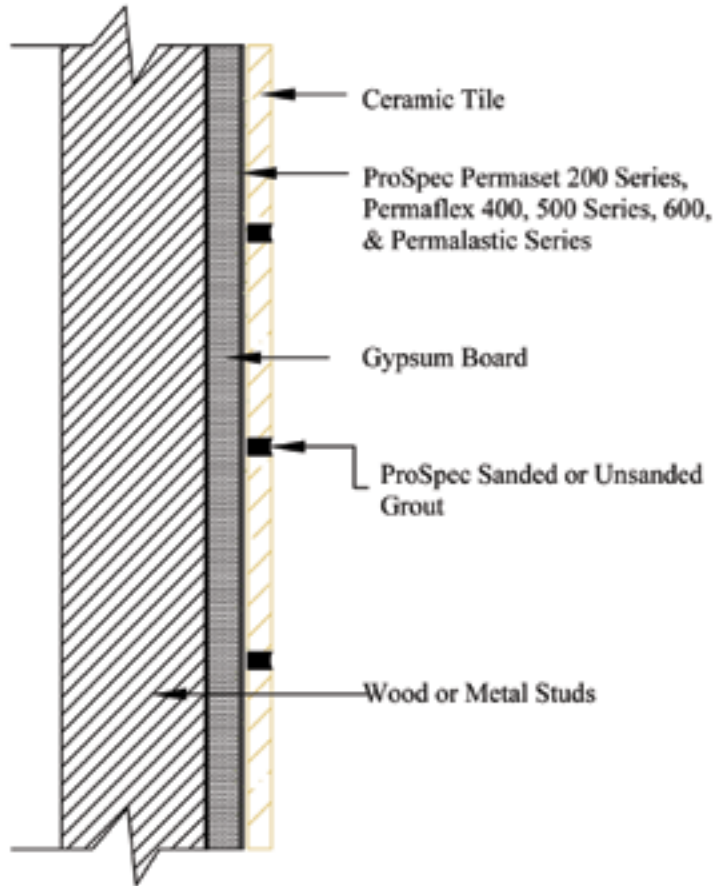
W242

# W243



## Walls, Interior

Wood or Metal Studs: Gypsum Board, Dry Set or Latex Portland Cement Mortar



**NOTES:**

Refer to ProSpec Technical Data Sheet for product installation specifications.

\* For dry areas only

\* Procelain tile requires thin set mortar meeting 118.4

**Issue Date**  
10-01-09

Product	Minimum Requirements:	
	ANSI Spec	ISO
Adhesive	118.1	C1
Grout	118.6 - 118.7	CG1

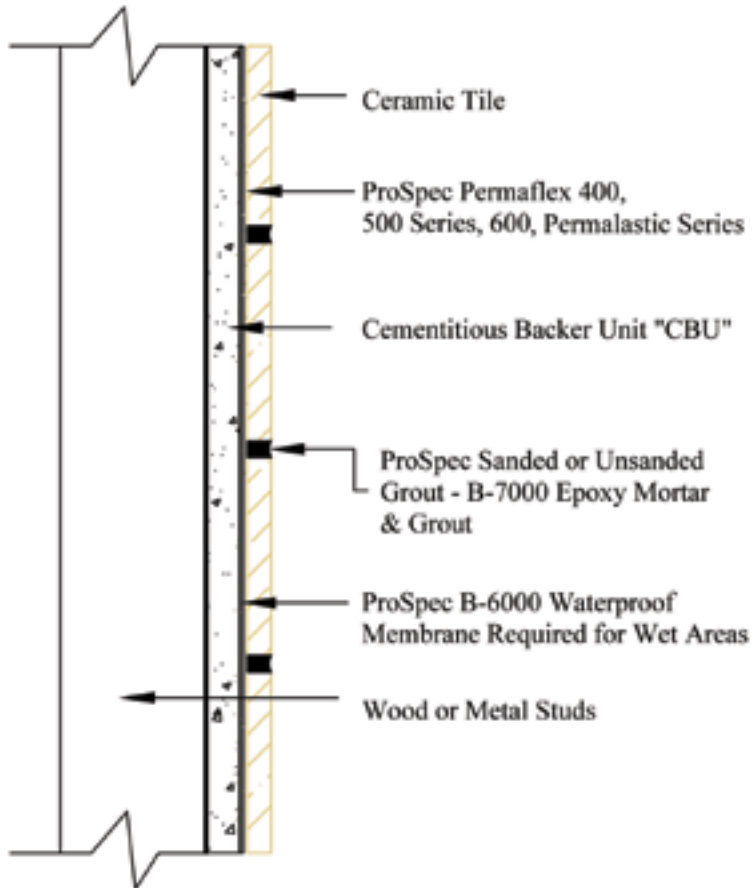
**Drawing Number**  
W243

# W244C



## Walls, Interior

Wood or Metal Studs: Cementitious Backer Unit



**NOTES:**

Refer to ProSpec Technical Data Sheet for product installation specifications.

**Issue Date**  
10-09-09

Product	Minimum Requirements:	
	ANSI Spec	ISO
Adhesive	118.4	C2
Grout	118.3-118.6-118.7	RG-CG1

**Drawing Number**  
W244C

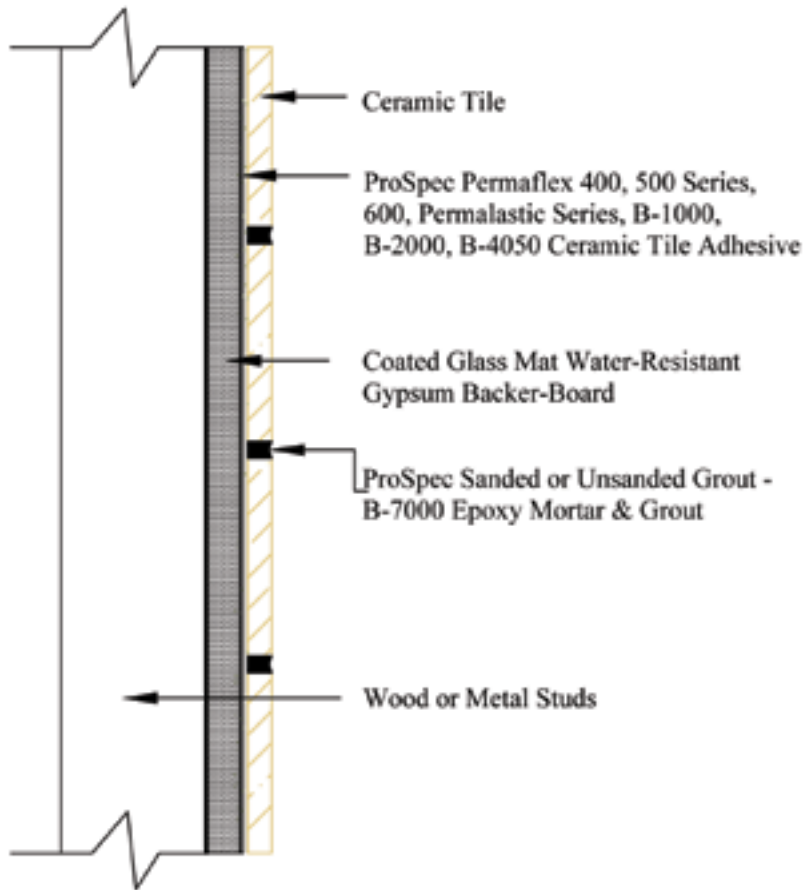


# W245



## Walls, Interior

Wood or Metal Studs: Coated Glass Mat, Water-Resistant Gypsum Backerboard



**NOTES:**

Refer to ProSpec Technical Data Sheet for product installation specifications.

**Issue Date**  
10-07-09

Product	Minimum Requirements:	
	ANSI Spec	ISO
Adhesive	118.4 - A136.1	C2-D1
Grout	118.3 - 118.6 - 118.7	RG-CG1

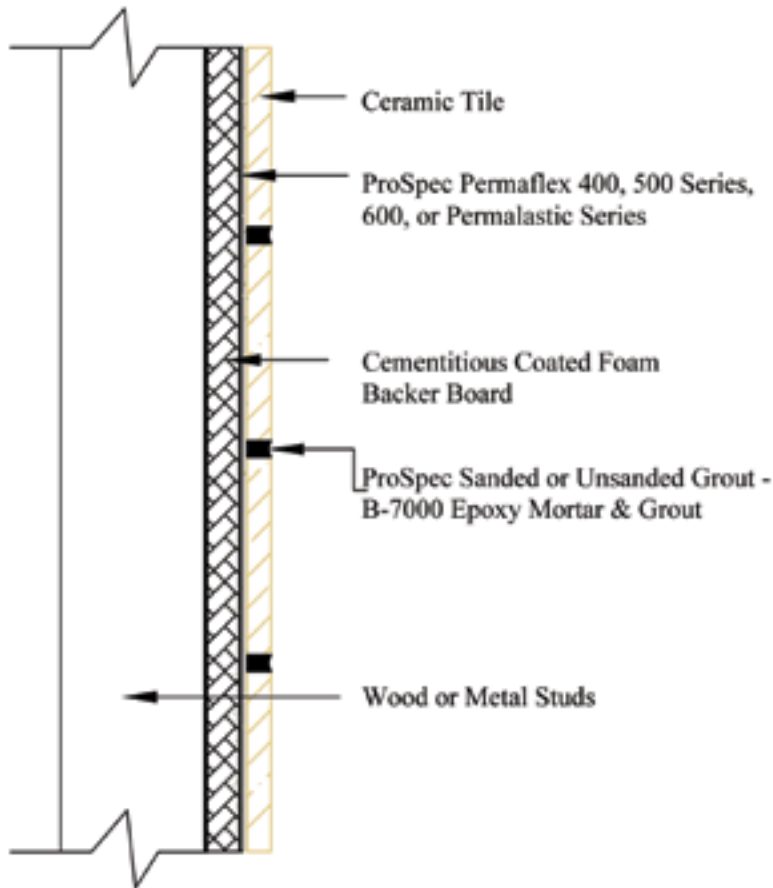
**Drawing Number**  
W245

# W246



## Walls, Interior

Wood or Metal Studs: Cementitious Coated Foam Backer Board



### NOTES:

Refer to ProSpec Technical Data Sheet for product installation specifications.

**Issue Date**  
10-12-09

Product	Minimum Requirements:	
	ANSI Spec	ISO
Adhesive	118.4	C2
Grout	118.3 - 118.6 - 118.7	RG-CG1

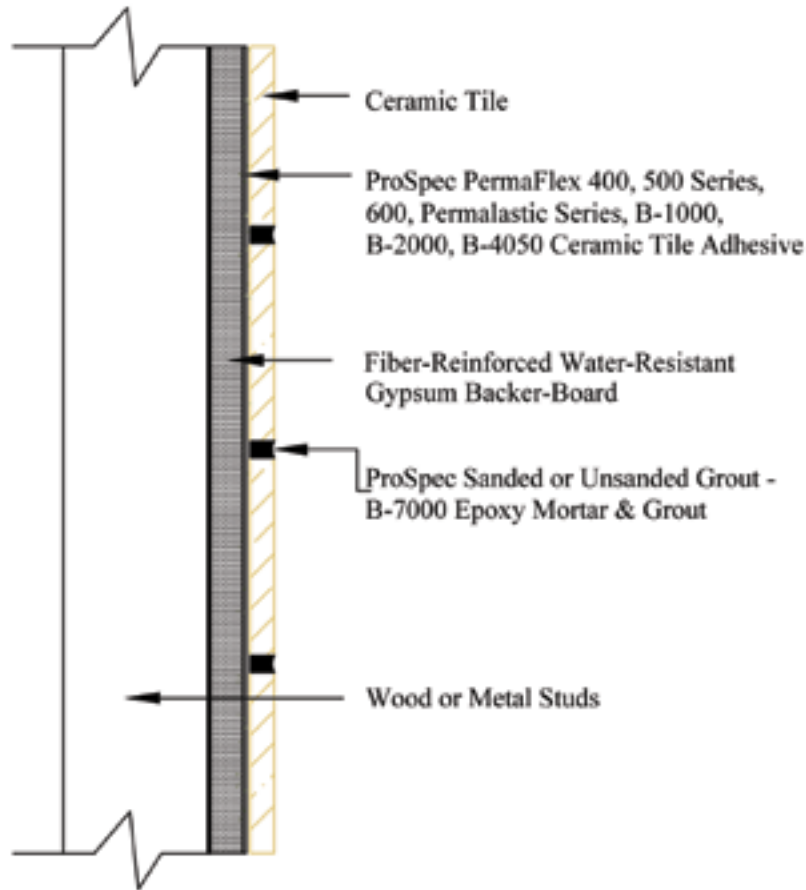
**Drawing Number**  
W246

# W247



## Walls, Interior

Wood or Metal Studs: Fiber-Reinforced Water-Resistant Gypsum Backerboard



### NOTES:

Refer to ProSpec Technical Data Sheet for product installation specifications.

**Issue Date**  
10-12-09

Product	Minimum Requirements:	
	ANSI Spec	ISO
Adhesive	118.4 - A136.1	C2-D1
Grout	118.3 - 118.6 - 118.7	RG-CG1

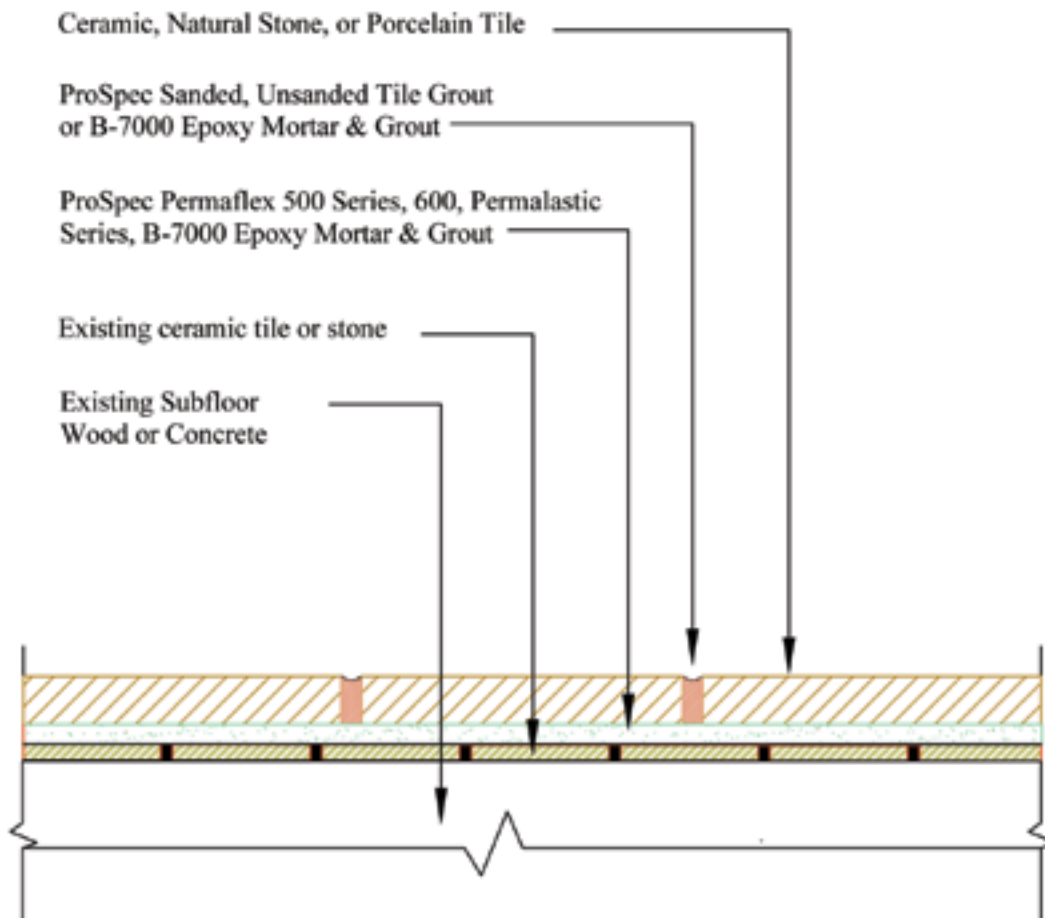
**Drawing Number**  
W247

# TR712



## Floors, Interior

Renovation: Tile over tile on existing floor



### NOTES:

Refer to ProSpec Technical data sheet for product installation specifications.

Issue Date

09-08-09

### Minimum Requirements

Product	ANSI Spec	ISO
Adhesive	118.3 - 118.4	C2 - S1
Grout	118.3 - 118.6	RG - CG1

Drawing Number

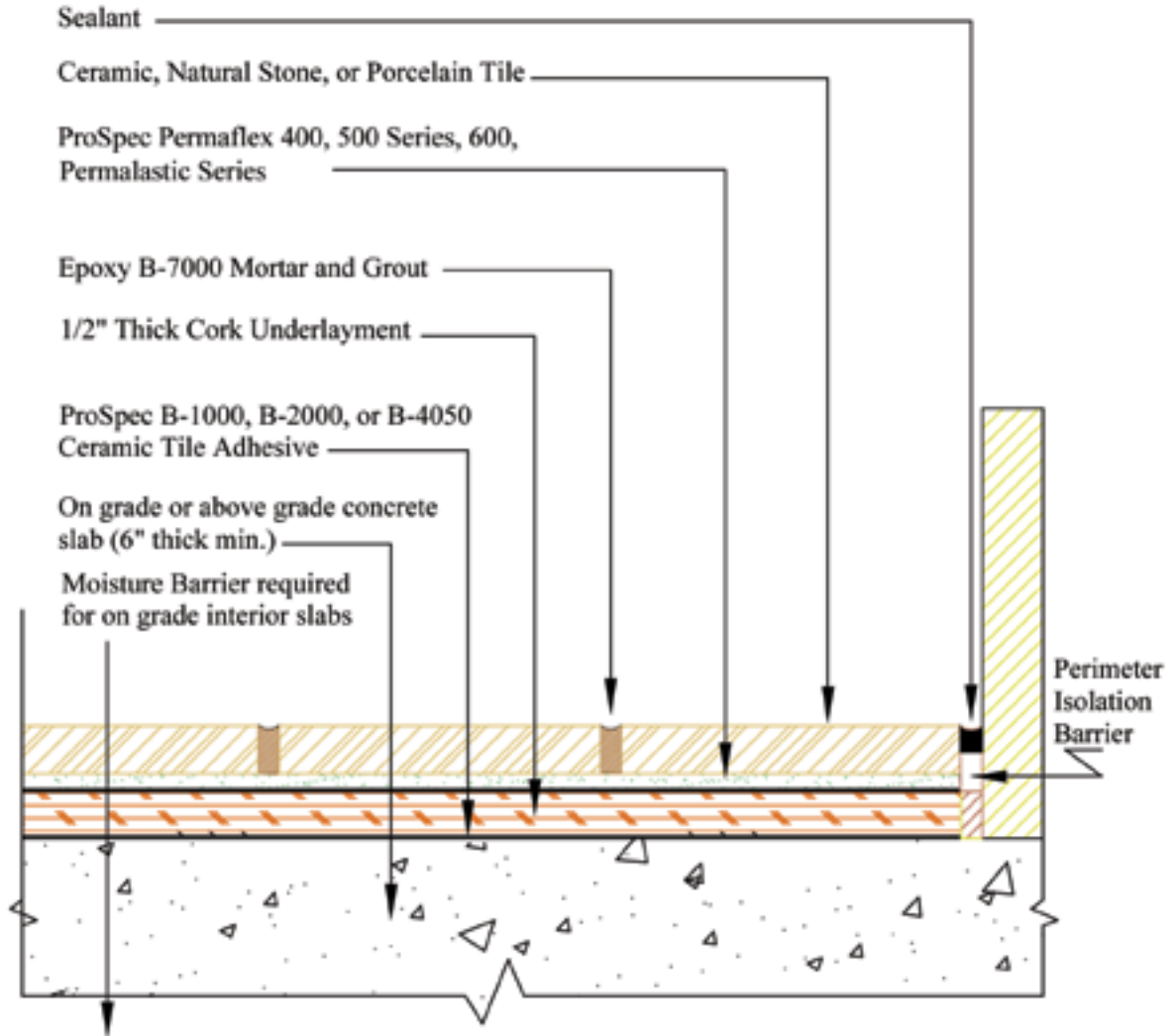
TR712

# F135



## Floors, Interior

Cork Underlayment on Concrete: Latex Portland Cement Mortar Epoxy Grout



**NOTES:**

Refer to ProSpec Technical Data Sheet for product installation specifications.

**Issue Date**

09-08-09

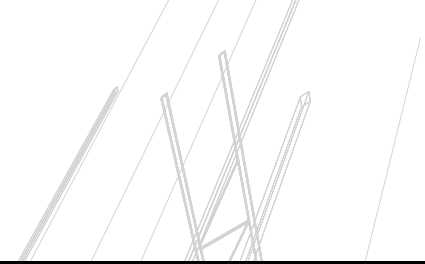
Minimum Requirements:

Product	ANSI Spec	ISO
Adhesive	118.4	C2
Grout	118.3	RG

**Drawing Number**

F135

# PROSPEC®



8201 Arrowridge Boulevard  
Charlotte, NC 28273  
1.800.738.1621

REV 11/09