

### GOLD™

## Anti-fracture and Waterproofing Membrane

### PRODUCT DESCRIPTION

Gold™ is a ready to use, latex waterproofing and anti-fracture membrane for use beneath thin set ceramic tile installations on vertical and horizontal surfaces. Gold exceeds the requirements of ANSI A118.10 (specification for waterproof membranes beneath thin set tile and stone) and the proposed ANSI A118 specification for crack isolation membranes. Use Gold in commercial or residential applications. Apply over concrete, cement block walls, cement backer board, gypsum board, exterior grade plywood (interior, dry installations only) and mortar beds.

### AREAS OF USE

Use to prevent tile cracking caused by the shrinkage of new concrete slabs and to prevent cracks up to 1/8" from transferring through tile or stone. Use Gold to waterproof showers, lavatories, fountains, commercial kitchens and restaurants etc.

### SURFACE PREPARATION

All wet areas must have proper slope to drains. All surfaces must be structurally sound, clean dry and free of contaminants that may interfere with proper bond.

### APPLICATION

Read and understand data sheet before beginning the installation. Follow applicable ANSI, TCA, NTCA installation specifications. Ambient temperatures must be at least 50°F. Apply with a brush, roller or trowel. When applying with a trowel, spread with the notch side (3/16" v-notch) then flatten with the smooth side of the trowel.

Pre-treat all edges, corners, coves and where floors meets walls a minimum 6" on either side with a heavy coat, using a brush, roller or 3/16" V-notch trowel. Cracks up to 1/8" and gaps between plywood should be filled with the membrane. When treating cracks in concrete floors, the membrane must extend at least one tile length on either side of the crack.

After pre-treatment of coves corners and cracks, apply a continuous film at 20-30 mils (thickness of a drivers license) over the remaining area. Allow it to dry for 1-3 hours.

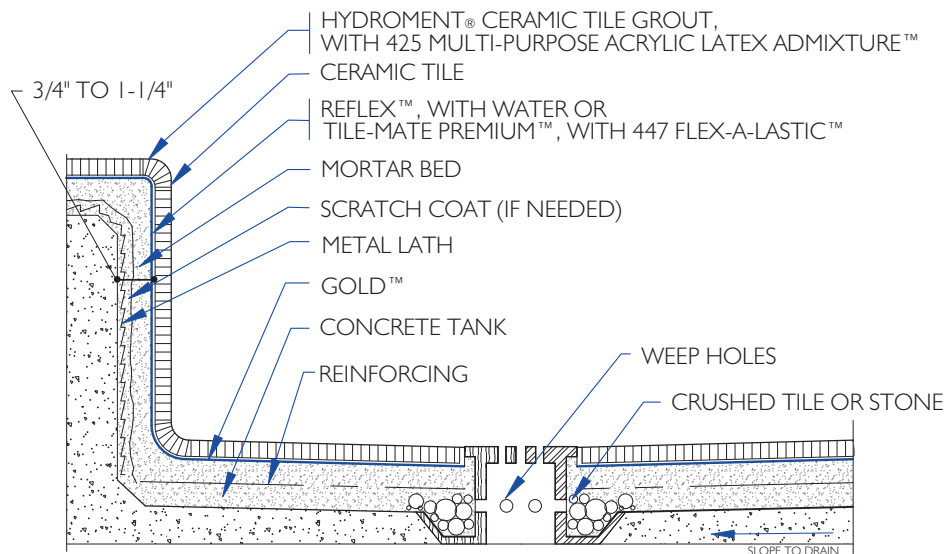
**SECOND COAT:** Once the first coat is dry, apply a second coat at the same thickness. Allow the second coat to dry for 1-3 hours or until the membrane is dry and no longer tacky.

Install tile or stone over the cured Gold membrane with Hydroment ReFlex™, Single-Flex™, Single-Flex FS™, PM Thin-Set, Tile-Mate™ or Tile-Mate Floor & Wall mixed with 425 Multi-Purpose Acrylic Latex Admixture™ or 447 Flex-A-Lastic™ Flexible Mortar Admixture; or Hydroment Ultra Premium, Multi-Purpose or Professional Grade Mastics; Hydroment I900 Modified Epoxy, or Hydroment Color-Poxy®.

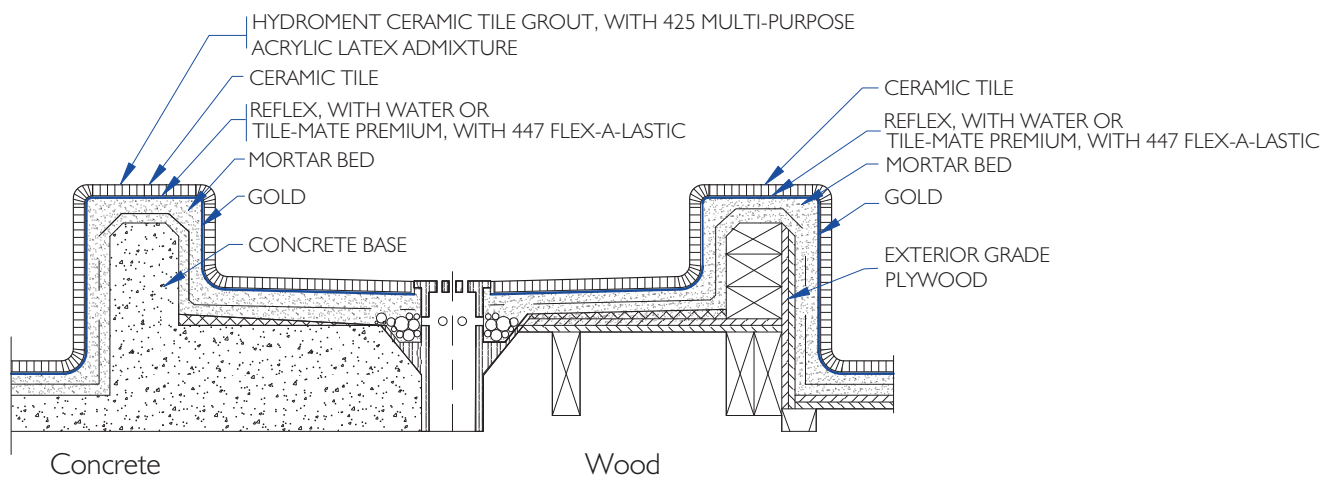
### DRY TIME

Gold requires 1-3 hours drying time depending on temperature and humidity before installing tile or applying the 2nd coat. Allow 72 hours before exposing the installation to moisture or prior to conducting a water test.

## TILE TUBS, FOUNTAINS & CURBS- Waterproof Membrane

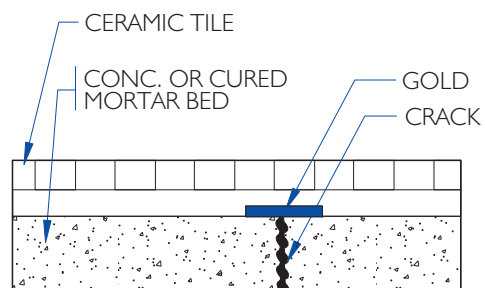


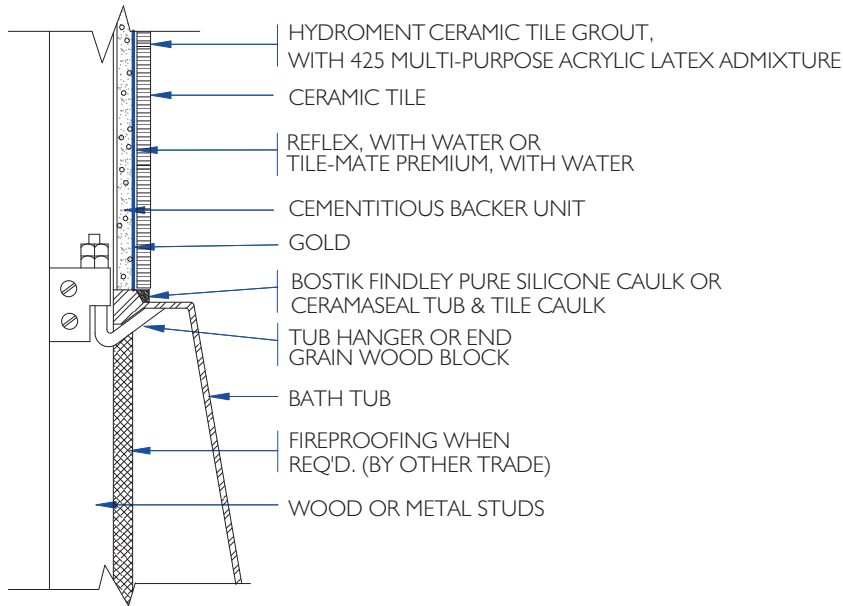
B417-2000



B417-2000

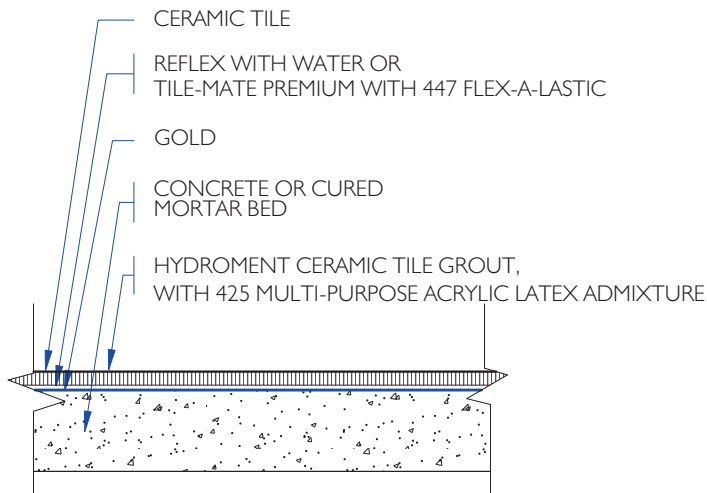
## CRACK ISOLATION- Interior Crack Treatment Up to 1/8"





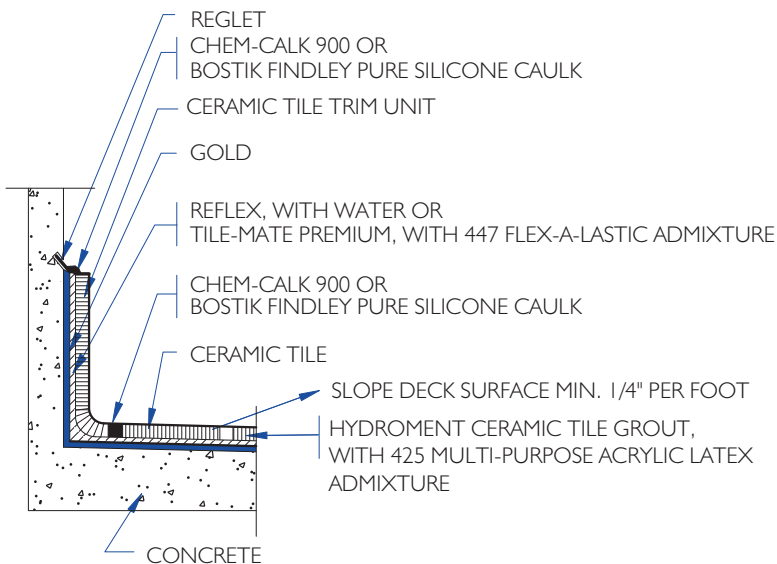
## BATHTUB WALLS- Wood or Metal Studs

B412-2000



## FLOORS, INTERIOR- Waterproof Membrane

F122-2000



## FLOORS, EXTERIOR- Balcony Deck

F104-2000

## ANSI A118.10 TEST RESULTS

TEST		RESULT	ANSI REQUIREMENT
M-4.1	Mold Growth	"Does not support mold growth."	"Shall not support mold growth."
M-4.3	Breaking Strength	355 psi	170 psi minimum
M-4.2	Seam Strength	30 lbs/ 2" width	16 lbs/ 2" width
M-4.5	Waterproofness	no moisture penetration @ 48 hours	no moisture penetration @ 48 hrs
M-5	Shear Strengths		> 50 psi
M-5.3	7 Day	205 psi	> 50 psi
M-5.5	7 Day Water Immersion	100 psi	> 50 psi
M-5.6	4 Week Shear	165 psi	> 50 psi

Proposed ANSI 118 Crack Isolation Specification: Pass 0.125" (1/8")

### COVERAGE

45 ft<sup>2</sup>/gallon. Coverage will vary depending on the roughness of the substrate.

### CLEAN UP

Gold is difficult to remove once it has dried. Clean all tools and equipment with soap and water before the material dries.

### LIMITATIONS

- Do not freeze
- Do not apply if surface temperature will be less than 50°F within 72 hours
- Do not apply over wet surfaces or surfaces subject to hydrostatic head
- Do not use to bridge dynamic joints such as cold, control or expansion joints
- Do not use as an adhesive
- Do not use as a wearing surface
- Not intended to isolate cracks larger than 1/8" wide or those caused by excessive structural movement
- Not for use over poured gypsum concrete such as "gypcrete"
- Not for use as a vapor barrier to eliminate subfloor moisture
- Wet areas must be sloped to drain according to TCA guidelines
- Gold must have minimum dry film thickness of 30 mil (roughly the thickness of a drivers license)



Middleton, MA 01949  
(800) 7-BOSTIK/(800) 726-7845

### PLANT LOCATIONS

Temecula, CA 92590  
Twinsburg, OH 44087  
Conyers, GA 30207  
Paulsboro, NJ 08066

### LIMITED WARRANTY

All statements, technical information and recommendations set forth herein are based on tests which Bostik, Inc. believes to be reliable. However, Bostik, Inc. does not guarantee their accuracy or completeness. The buyer should conduct its own tests of this product before use to determine proper preparation technique and suitability for proposed application. Any sale of this product shall be on terms and conditions set forth on Bostik's order acknowledgement. Bostik, Inc. warrants that the product conforms with Bostik, Inc.'s written specifications, and is free from defects. BOSTIK, INC. DISCLAIMS ALL OTHER WARRANTIES, EXPRESS OR IMPLIED, INCLUDING THE WARRANTIES OF MERCHANTABILITY AND FITNESS FOR A PARTICULAR PURPOSE. THE BUYER'S SOLE REMEDY FOR NONCOMPLIANCE WITH THIS WARRANTY SHALL BE FOR THE REPLACEMENT OF THE PRODUCT OR REFUND OF THE BUYER'S PURCHASE PRICE. IN NO CASE WILL BOSTIK, INC. BE LIABLE FOR DIRECT, CONSEQUENTIAL, ECONOMIC OR OTHER DAMAGES.



Boston Street • Middleton, MA 01949 • Customer Service 888/592-8558 • Technical Service 800/523-6530