

FIRE MANAGEMENT PRODUCTS





FAS TRACK'S ENVIRONMENTAL BENEFITS AND LEED CONTRIBUTIONS

FAS Track™ represents an environmental advancement for interior partition construction. Its resilient intumescent layer of Blaze Seal makes it a one-piece solution to acoustical and fire resistive head assemblies. FAS Track's partition head assembly eliminates most bridging, elastomeric sealants, mineral wool, and the need to cut drywall to fit the flutes of decking. FAS Track reduces scraps and waste and often does not require any sealant to be applied to the head of wall joint. Resources are saved, and indoor air quality is improved.

FAS Track contributes to a number of LEED credits in the 2009 New Construction, Core and Shell, Commercial Interiors, and Schools rating systems.

RESOURCE CONSERVATION:

Because even very short pieces of FAS Track are used in construction, very little is wasted. Scraps as small as 16 inches are often retained. The metal portion of smaller scraps can be recycled, once the BlazeSeal is peeled off by hand. For projects with high targets for **MR 2 Construction Waste Management**, this method of recycling FAS Track scraps will contribute to this credit.

MR CREDIT 4 RECYCLED CONTENT:

Like all of CEMCO's framing products, FAS Track contributes 32.7% recycled content to this credit.

IEQ 3.2 INDOOR AIR QUALITY MANAGEMENT PLAN – BEFORE OCCUPANCY:

If the Air Testing option is selected by the project team, FAS Track is a valuable player in achieving this credit. FAS Track eliminates the need for spray-applied smoke seal and elastomeric fire sealant. It also can take the place of acoustical sealant in some assemblies. With no solvents and very low VOC content, FAS Track significantly reduces indoor air pollution. The Air Testing option is difficult to achieve, and every bit of indoor pollution that FAS Track eliminates from the project increases the chances of success.

IEQ 4.1 LOW-EMITTING MATERIALS – ADHESIVES AND SEALANTS:

FAS Track's intumescent fire-resistive seal is a solid, factory-applied layer, so it is not required to comply with the Adhesives and Sealants VOC limits. Moreover, because BlazeSeal provides all the fire protection required for many partitions, no spray-applied smoke seals or elastomeric fire-resistive sealants are required, so their VOC contributions are eliminated.

IEQ 4.6 LOW-EMITTING MATERIALS – CEILING AND WALL SYSTEMS (LEED FOR SCHOOLS):

This credit does not apply to FAS Track. Only the gypsum board and the wall coverings are required to be tested.

IEQ 9 ENHANCED ACOUSTICAL PERFORMANCE (LEED FOR SCHOOLS):

FAS Track improves the Sound Transmission Class (STC) of partitions, and can even eliminate the need for acoustical sealant at the head of partitions. Its resilient BlazeSeal layer helps damp sound transmission of partitions around core learning spaces and can help achieve this credit.

For other LEED credit contributions, see [HYPERLINK "http://www.cemcosteel.com"](http://www.cemcosteel.com) **www.cemcosteel.com** and click "LEED Certification".

If you have any questions, concerns, or clarifications, please contact our Technical Services Department at (800) 416-2278 or [HYPERLINK "http://www.cemcosteel.com"](http://www.cemcosteel.com) **www.cemcosteel.com**.

FAS Track

About FAS Track 2-6

FAS Track 1" Deflection Assemblies..... 7-10

FAS Track DL2 2" Deflection Assemblies 11-13

FAS Strap

About FAS Strap 14-15

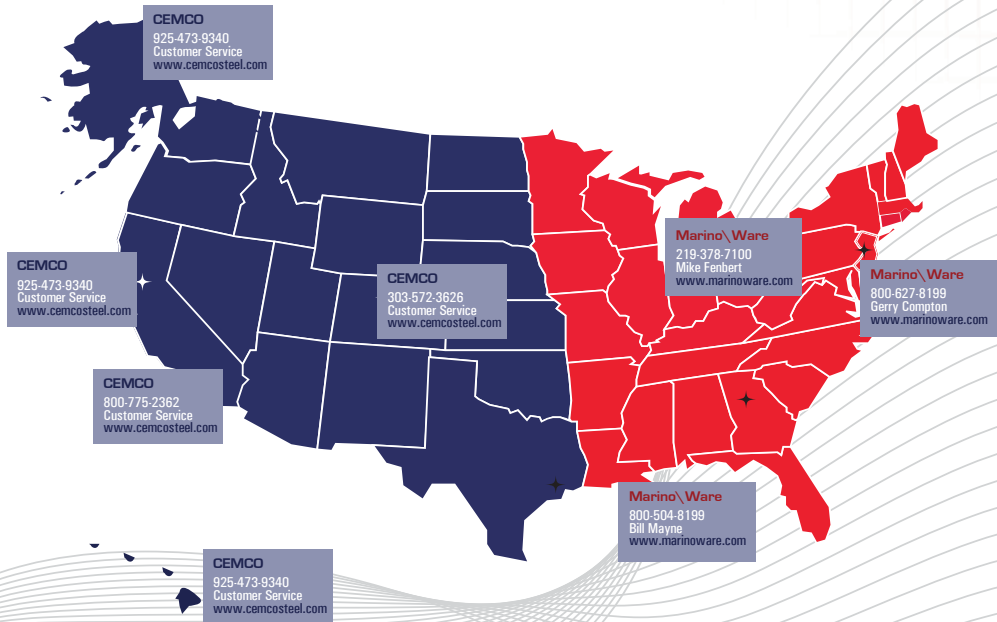
FAS Shaft

FAS Shaft 1" Deflection Assemblies 17-19

FAS Shaft 2" Deflection Assemblies 20

FAS Track

FAS Track 500 21-22





FAS Track is an exclusive Cemco Fire Management Product approach to Firestopping dynamic joints allowing up to two inches of unencumbered movement in a fire rated partition. The flexibility of the FAS Track product

is used to protect dynamic joints in cold formed steel/gypsum walls. The unique profile provides superior movement capabilities while eliminating any additional requirements of fire caulk, fire resistant sprays, drywall rips, or contour drywall cuts around fluted decks. The simple single source product allows 100% unencumbered movement while experiencing no fatigue to the fire resistance during the life of the assembly.

CODE COMPLIANCE

FAS Track meets all current building codes and its unique profile design provides industry solutions for meeting deflection requirements where other materials or systems are restricted by design, compressibility, elasticity, or bond strength characteristics. FAS Track has no restrictions providing 100% unencumbered movement. FAS Track has been tested for compliance with Section 713.3 of the 2006 IBC and 2007 CBC and is listed with UL Underwriters Laboratories in accordance with:

- **UL 2079:** Tests for Fire Resistance of Building Joint Systems.
- **ASTM E 1966:** Standard Test Method of Fire Tests of Firestop Systems.
- **ULC S115-M95:** Standard Method of Fire Tests of Firestop Systems.

SEISMIC REQUIREMENTS

Fas Track is approved for Class III cycling requirements, 500 cycles at 30 cycles per minute, meeting seismic building codes requirements. The class III movement provides design advantages over mastic reliant systems which are currently limited to level II (wind sway) capabilities of 500 cycles at 10 cycles per minute.

AIR LEAKAGE RATING

Air leakage tests conducted for compliance with Section 713.6 of the 2006 IBC and 2007 CBC are witnessed by UL on conditions using FAS Track as the joint treatment established L-Ratings of less than 1 CFM per lineal foot. Any rating below 1 CFM is also considered the best possible L-Rating. This is achieved with the FAS Track profile external groove; which provides a consistent seal against the drywall.

SOUND CONTROL

Sound can be passed through vibrations of metal to metal connections. The FAS Track profile provides two unique features to control sound transmissions. First, by incorporating intumescent tape around the corner of the track it works as a gasket when installed against a solid deck. Second, the external groove provides a tight seal against drywall blocking out sound and air transmissions. No additional caulking required on the top head of wall track.

SOUND TESTING

Sound Testing was performed at Western Electro-Acoustic Laboratory in Southern California (Test# TL08-696). The purpose of the sound testing was to see if the FAS Track installed without acoustic caulking would perform as well as a standard track with acoustic caulking. The test specimen was a wall assembly constructed from metal studs, resilient channel and type X gypsum board. The resilient channel was installed on one side only. The metal studs were 3-5/8 inch (92 mm) CEMCO 20 gauge spaced at 24 inches (609 mm) O.C. The siltrack was 3-5/8 inch (92 mm) CEMCO 20 gauge metal. The head track was 3-5/8 inch (92 mm) CEMCO FAS Track 20 gauge metal. The sill and vertical edges had acoustic caulking applied but the top edge along the FAS Track was left open with no acoustic caulking. This test rendered an STC rating of 52. This is the same STC rating of a wall with acoustic caulking across the top track. Therefore, in essence, the FAS Track does truly offer the same sound rating as acoustic caulking.



After

There is no fire resistant spray required over the mineral wool because of the expansive qualities of Intumescent.

[Test photo taken after the hose steam test]



Before

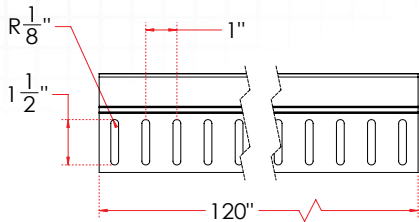
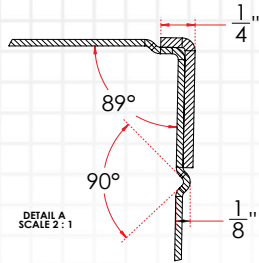
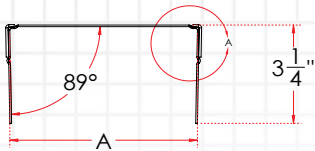
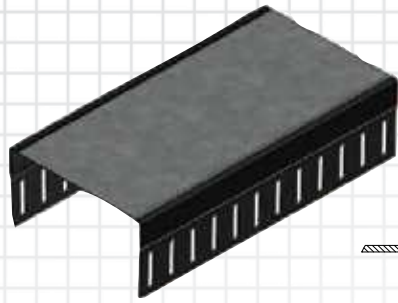
FAS TRACK ADVANTAGES

- Superior unencumbered movement of up to 2" overall.
- Eliminates reliance of adhesion and bond strength of fire caulk.
- Eliminates the requirement of fire resistant sprays over mineral wool on fluted deck assemblies.
- Eliminates the worry of adhesive, cohesive, and substrate failures of using fire caulking.
- No fatigue to the firestopping for the life of the assembly.
- By eliminating the installation of fire caulking/fire resistant sprays the project is done in less time.
- Eliminating the installation of fire caulking/ fire resistant sprays saves time and money of clean up, making FAS Track a clean choice.
- Provides UL Fire Rated assemblies for one, two, and three hour walls with the same track profile.

- Seismic listing and ratings are based on Class III movement.
- Provides quality assurance of factory applied fire resistant material.
- Unaffected by wet, freezing, humid conditions, or hot (below 300°F).
- Best possible L-Rating of less than 1 CFM.
- STC capabilities in the same range of acoustic caulks.
- Product identifications and approval recognition every 48" for easy inspection.
- Reduces inspection time.
- Cured intumescent tape makes product odor free and effective immediately.
- By reducing overall labor construction unit costs are lower.
- Architectural features are increased by eliminating the need of fire caulking.
- The architectural feature of the "Floating Ceiling" can be achieved while still providing a fire rated wall.

The proprietary FAS Track design provides fire stopping protection exceeding the stringent UL 2079 test standards for Head of Wall (HOW) joints in fire rated partitions. Design benefits of the combination of intumescent and metal slotted track profile provides superior movement and protection of fire resistant joint.

FAS TRACK - PROVIDES 1-1/4" TOTAL MOVEMENT



Patent No. US 7, 617, 643 B2

Track Member Width	Length	Gauge (mils)
2-1/2, 3-5/8, 4", 6", and 8"	10' 0"	20, 18, 16 and 14 GA (33, 43, 54, & 68 mil)

FAS TRACK DL PROFILE SPECIFICATIONS

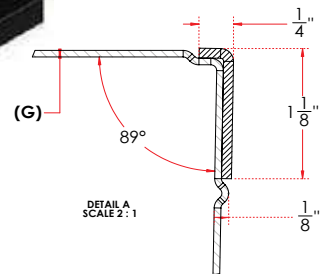
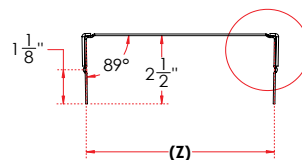
- Hot dipped galvanized steel complying with ASTM A653 and ASTM A1003 Structural Grade 50 Type H for Grade 33 Type H for a minimum coating of G-60 and complies with ASTM C645.
- Track member width 2-1/2, 3-5/8", 4", 6", and 8".
- Gauge (mils) 20, 18, 16, and 14 GA (33, 43, 54, and 68 mil).
- Intumescent tape 2mm.
- Length 10' 0" standard custom sizes available.
- Deep leg track with 2-1/2" legs.
- The external groove also provides increased sound ratings, as it reduces sound vibrations.
- The external groove provides an air tight assembly when it contact with drywall.

PROFILE DESCRIPTION

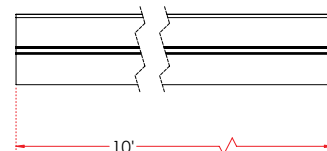
- External groove located above the deflection slots provides an air tight assembly when in contact with the drywall.
- The external groove also provides increased sound ratings, as it reduces sound vibrations.
- The contoured corner of the track allows the intumescent to fit into the track profile without damage during handling or impeding the head of wall assembly.
- The track profile allows the intumescent to seal against the leg as well as the top corner of the track, this allows the intumescent to expand both up and out at the same time.
- 1-1/2" x 1/4" slots 1" on center for deflection.

INTUMESCENT

- Cured 2mm thick material factory adhered to FAS Track profile.
- Outer layer of intumescent has a polyester film to protect from water, UV, dirt and damages.
- Expands at temperatures in excess of 300° Fahrenheit.
- Becomes a "hard char" expanding in excess of 35 times its original size.
- Fills HOW joint creating seal preventing passage of flame, heat, and smoke through joint.
- Cured and odor free providing immediate protection.
- Active ingredients protect either 1, 2 or 3 hour fire rated joints.
- In a pan deck assembly the intumescent expands over the mineral wool creating a seal and eliminating the need for fire resistant sprays.



(G) = .033 to .068 mils
(Z) = 2-1/2" to 8"



DEFLECTION CAPABILITIES OF UL LISTED DYNAMIC ASSEMBLIES

Approved deflection of firestop materials protecting dynamic Head of Wall (HOW) joints listed through UL are based on two major factors. The first, "Nominal Joint Width" refers to the installed gap distance defined by the joint between the top of wall/wall sheathing and overhead structure. The second, "Movement capabilities" refers to the maximum percentage of the nominal joint width that joint materials can deflect without compromise or failure at a given cycle rate based on three levels.

- **Level I:** 1 cycle/min for total of 500 cycles (Thermal)
- **Level II:** 10 cycles/min for total of 500 cycles (Wind Sway)
- **Level III:** 30 cycles/min for total of 500 cycles (Seismic)

The following illustration displays deflection capabilities and required nominal joint widths using the majority of sealant type joint systems typically limited to class II movement. These systems being reliant upon compressibility, elasticity, and or bond strength of fill, void, or cavity materials (mineral wool and fire caulk/spray) are restricted to common UL ratings of +/- 25% movement capabilities:

NOMINAL 25% JOINT WIDTH	25% COMPRESSION	25% EXTENSION	DEFLECTION = COMPRESSION + EXT.	COMPRESSION ONLY
1/2"	1/8"	1/8"	1/4"	1/8"
1"	1/4"	1/4"	1/2"	1/4"
2"	1/2"	1/2"	1"	1/2"
4"	1"	1"	2"	1"

EXAMPLE FAS TRACK UL LISTING

- System No. HW-D-0515
- Assembly Rating – 1 and 2 HR (See Item 2)
- L Rating at Ambient – Less Than 1 CFM/Lin ft
- L Rating at 400 F – Less Than 1 CFM/Lin ft
- Nominal Joint Width – 1/2 in. and 1 in. (See Item 3)
- Class II and III Movement Capabilities – 100% Compression & Extension

In comparison, UL listed dynamic HOW assemblies utilizing FAS Track profiles are provided 100% movement capabilities during compression or extension for class I, II, or III movement. The following illustration shows deflection capabilities provided using FAS Track as the HOW joint fire stop protection:

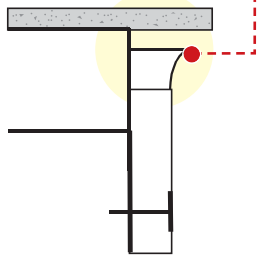
NOMINAL JOINT WIDTH (FAS Track)	100% COMPRESSION	100% EXTENSION	DEFLECTION = COMPRESSION + EXT.	COMPRESSION ONLY
5/8"	5/8"	5/8"	1-1/4"	1-1/4"

The proprietary design and use of FAS Track enables assemblies to be installed with smaller nominal gap joints and achieve superior movement. The unencumbered movement allows for unequal compression and extension designs when overall deflection requirements are within parameters of the deflection limits of individual profiles.

TYPICAL FAILURES OF JOINTS USING SEALANT

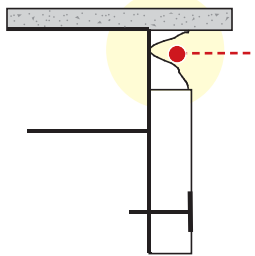
ADHESIVE FAILURE

SEALANT PULLS AWAY FROM SUBSTRATE



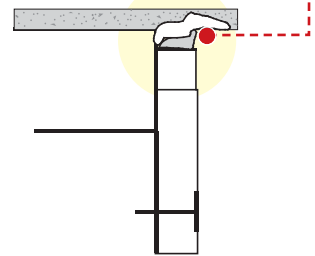
COHESIVE FAILURE

SEALANT TEARS WHEN EXTENDED



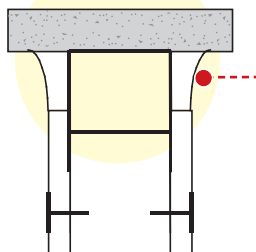
SUBSTRATE FAILURE

STRESS FROM SEALANT CAUSES SUBSTRATE FAILURE

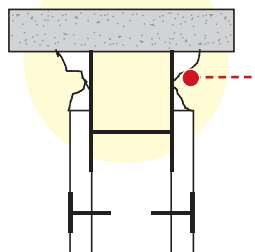


AVOID THREE SIDED ADHESION

SEALANT BONDS TO TRACK SURFACE AND MAY BECOME BEARING

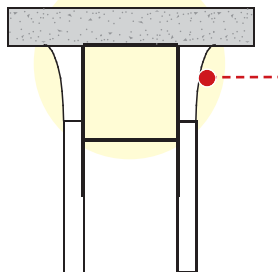


SEALANT TEARS OR SUBSTRATE DAMAGE WITH JOINT MOVEMENT

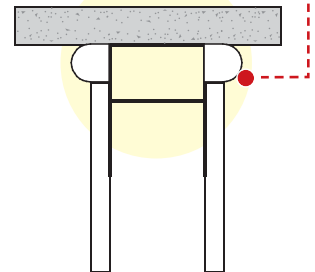


AVOID DISPLACEMENT FROM COMPRESSION

SEALANT UPON INSTALLATION



SEALANT DISPLACED BY COMPRESSION OF JOINT



SMOKE BARRIERS/L-RATING

UL provides an optional “L-Rating” which can be measured and assigned to individual assembly penetrations or joints. The L-Rating simply defined for a joint is a measurement of the air leakage rate through a fire stop system or fire-resistive joint system without fire exposure, tested under a differential pressure of 0.30 inches water column (75 Pa) at both 75 and 400 degrees Fahrenheit. It is expressed as a volumetric flow rate in units of cfm/lft.

Measurements taken of assemblies using either slotted or solid leg tracks and utilizing Fas Track HOW joint fire stop protection established L-Ratings for FAS Track. Tested “severe condition” assemblies were installed perpendicular to a 3” deep fluted pan deck having only a 4pcf mineral wool compressed 33% into the flute, no mastic covering per UL listed Fas Track assemblies, no insulation materials inside wall cavities or HOW gap, and cycled 500 times at level III (30 cycles/min) movement.

IBC 2006

713.6 Fire-resistant joint systems in smoke barriers. Fire-resistant joint systems in smoke barriers shall be tested in accordance with the requirements of UL 2079 for air leakage. The air leakage rate of the joint shall not exceed 5.0 cfm per lineal foot (0.00775 m³/slm) of joint at .30 inch (7.47 Pa) of water for both the ambient temperature and elevated temperature tests.

Results of UL “L-Rating” tests show assemblies utilizing FAS Track fire-resistive joint protection for up to level III movement achieve the lowest ratings possible for air leakage protection well below the IBC standard of 5 CFM/lft.

INSTALLATION

There are no special requirements needed to install FAS Track. The FAS Track is installed the same way you would install any standard top track. First select the appropriate width and gage to accommodate the desired wall assembly. The installation requires only positive attachment of power actuated friction fit, or mechanical fasteners.

- Attachment to flat concrete or pan deck use min. 1” power actuated fasteners and anchor at 24” O/C.
- Metal to metal use #8 framing screws at 24” max O/C.
- Install adjoining pieces butted in contact with each other.
- In unique structural conditions fasteners and spacing should be approved by Engineer of Record.
- For incidental gaps between FAS Track butt joints or gaps in the corner connections, use repair strips provided by manufacture.
- Intumescent tape is compatible with non solvent sealants, latex paint, tapping mud, fire proofing, and fire sealant

MANUFACTURES RECOMMENDATIONS

- When using FAS Track with pan deck overhead, install in accordance with specifications of UL approved assemblies protection of “flutes” with fire proofing or mineral wool “stuff only” sprays are not required.
- Although FAS Track can be exposed to weather conditions it is recommended to store in a covered area.
- If intumescent tape has been damaged or pulled away from track, consult manufacture for repair protocol.
- All track end joints are to be installed tight to each other without gaps between pieces.
- Notify the IOR when FAS Track is being installed so that inspections can be coordinated during the framing inspection.
- If overhead concrete deck is uneven acoustic sealant may be used to fill gaps to protect against smoke and sound transfer.

FAS Track UL Numbers

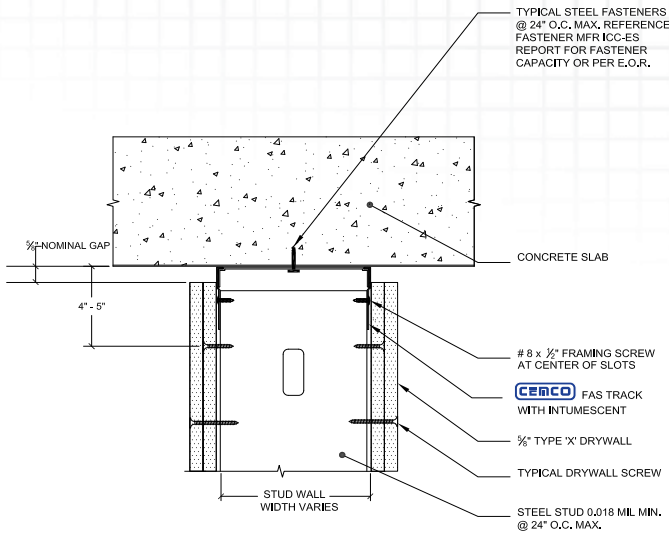
HW-D-0514, HW-D-0515, HW-D-0518, HW-D-0524, HW-D-0525, HW-D-0550
 HW-D-0551, HW-D-0553, HW-D-0554, HW-D-0556, HW-D-0557, HW-D-0563
 WW-S-0057, HW-D-0573, HW-D-0576, HW-D-0577, HW-D-0578, HW-D-0579
 HW-D-0580, HW-D-0581, HW-D-0582, HW-D-0583, HW-D-0584, HW-D-0585
 HW-D-0586, HW-D-0587, HW-D-0596, HW-D-0598, HW-D-0599, HW-D-0600
 HW-D-0601, HW-D-0620, HW-D-0621, HW-D-0622, HW-D-0623, HW-D-0624
 HW-D-0625, BW-S-0024, WW-S-0061

Please logon to www.cemcosteel.com for updates.

800.775.2362

FAS TRACK DETAILS - PROVIDES 1-1/4" MOVEMENT

FAS TRACK CONCRETE SLAB

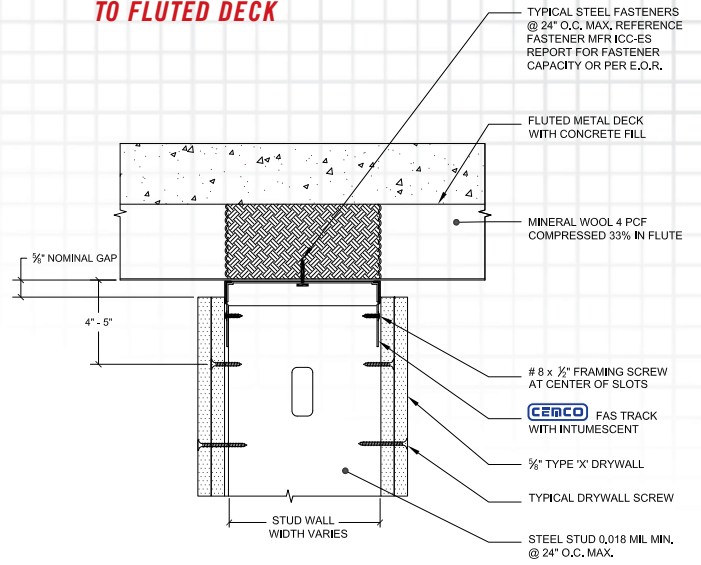


- HW-D-0515
- HEAD OF WALL SYSTEM 2, FAS TRACK WITH CONCRETE SLAB
- 5/8" NOMINAL JOINT. 100% MOVEMENT
- 1 AND 2 HOUR FIRE RESISTANT ASSEMBLY



(SEE UL LISTING FOR WALL FIRE RATING). UL-2079 TEST STD. AVAILABLE IN 1 HOUR-SINGLE LAYER OF GYPSUM WALLBOARD

FAS TRACK PERPENDICULAR TO FLUTED DECK

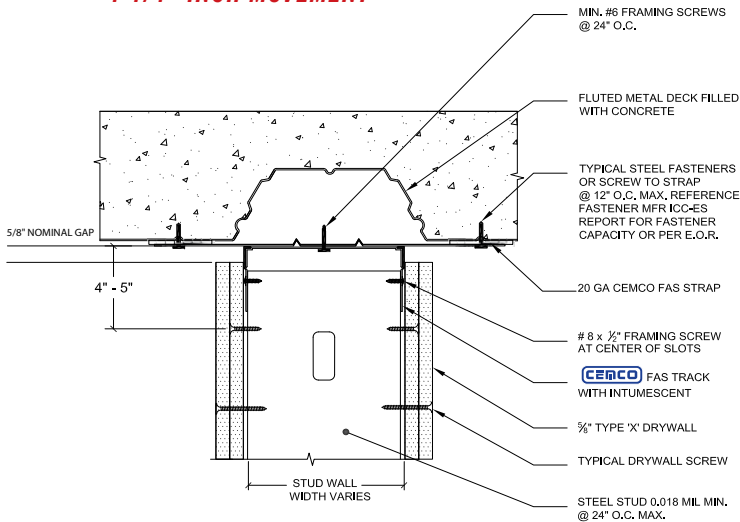


- HW-D-0518
- HEAD OF WALL SYSTEM 1, FAS TRACK PERPENDICULAR UNDER FLUTED DECK. 5/8" NOMINAL JOINT. 100% MOVEMENT
- 2 HOUR FIRE RESISTANT ASSEMBLY



(SEE UL LISTING FOR WALL FIRE RATING). UL-2079 TEST STD.

FAS TRACK PARALLEL WITH FLUTED DECK 1-1/4" INCH MOVEMENT

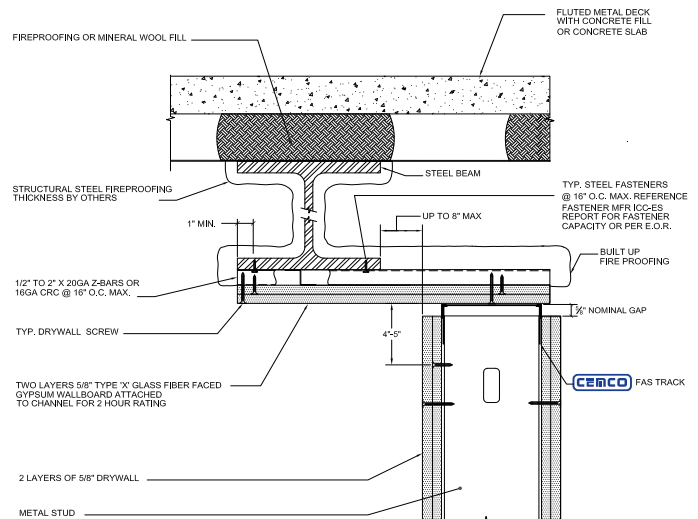


- HW-D-0524 "CONFIGURATION A"
- SYSTEM 1, PARALLEL TO FLUTE CENTERED UNDER FLUTED DECK
- 1 AND 2 HOUR FIRE RESISTANT ASSEMBLY



(SEE UL LISTING FOR WALL FIRE RATING). UL-2079 TEST STD. AVAILABLE IN 1 HOUR-SINGLE LAYER OF GYPSUM WALLBOARD

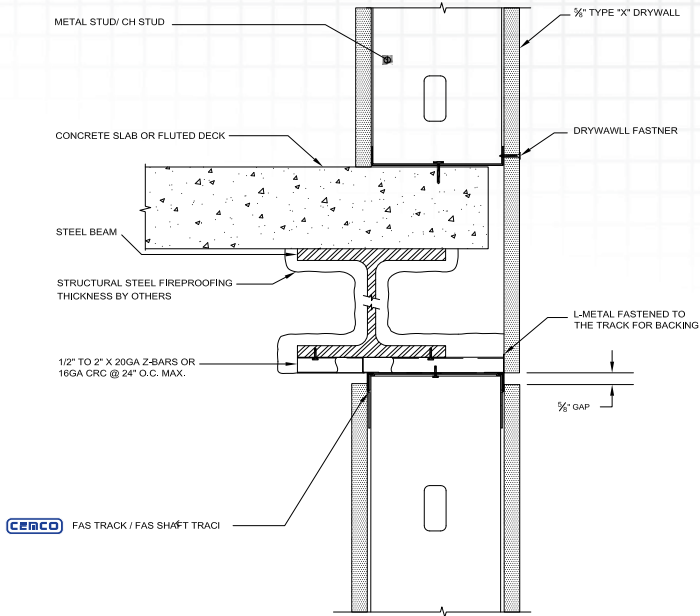
FAS TRACK CANTILEVER UNDER BEAM-REGULAR WALL



- HW-D-0600 CANTILEVER UNDER BEAM
- REGULAR WALL SYSTEM, 5/8" NOMINAL JOINT. 100% MOVEMENT
- 1 AND 2 HOUR FIRE RESISTANT ASSEMBLY

(SEE UL LISTING FOR WALL FIRE RATING). UL-2079 TEST STD. AVAILABLE IN 1 HOUR-SINGLE LAYER OF GYPSUM WALLBOARD

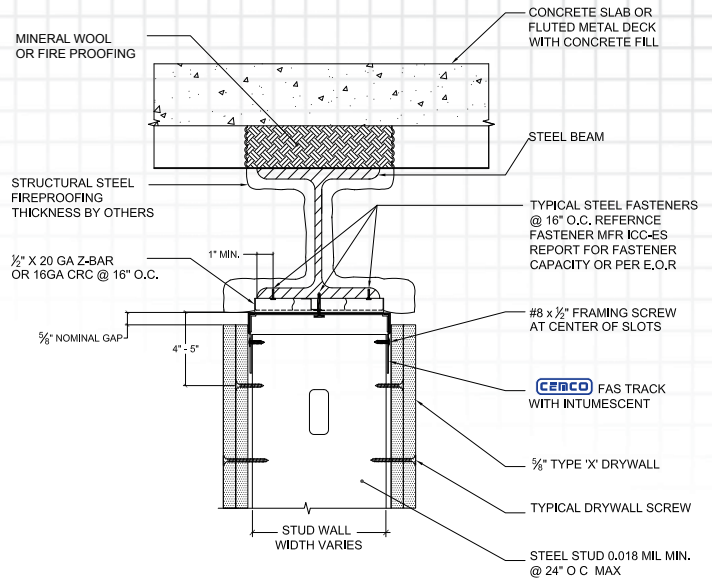
FAS TRACK STAIRWELL BYPASS AT I-BEAM



- HW-D-0551 STAIRWELL SLAB BY PASS @ I-BEAM
- 5/8" NOMINAL JOINT
- 1 AND 2 HOUR FIRE RESISTANT ASSEMBLY.

(SEE UL LISTING FOR WALL FIRE RATING) UL-2078 TEST STD.
AVAILABLE IN 1 HOUR-SINGLE LAYER OF GYPSUM WALLBOARD

FAS TRACK CENTERED DIRECTLY UNDER BEAM

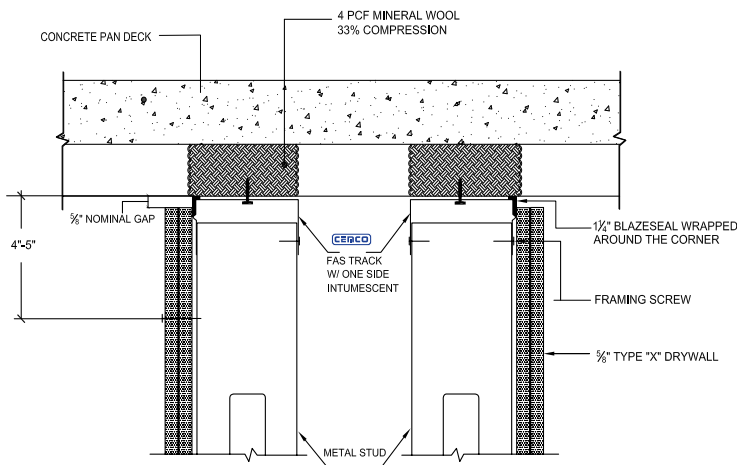


- HW-D-0551
- HEAD OF WALL SYSTEM 9, CENTERED DIRECTLY UNDER BEAM.
- 1 AND 2 HOUR FIRE RESISTANT ASSEMBLY.



(SEE UL LISTING FOR WALL FIRE RATING) UL-2078 TEST STD.
AVAILABLE IN 1 HOUR-SINGLE LAYER OF GYPSUM WALLBOARD

FAS TRACK CHASE WALL AT PAN DECK

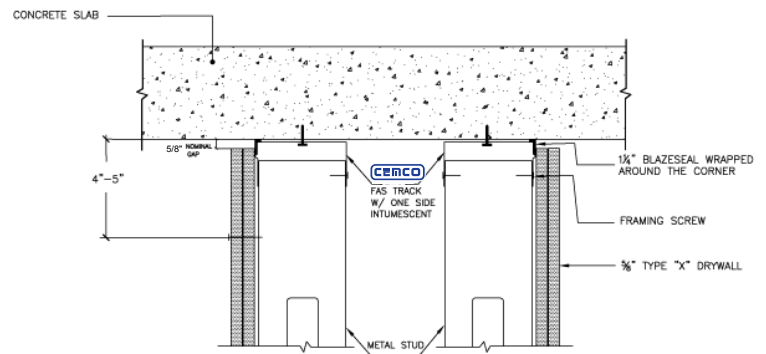


- HW-D-0553
- CHASE WALL SYSTEM 1, PERPENDICULAR TO FLUTE DECK.
- 5/8" NOMINAL JOINT, 100% MOVEMENT
- 1 AND 2 HOUR FIRE RESISTANT ASSEMBLY.



(SEE UL LISTING FOR WALL FIRE RATING). UL-2079 TEST STD.
AVAILABLE IN 1 HOUR-SINGLE LAYER OF GYPSUM WALLBOARD

FAS TRACK CHASE WALL AT CONCRETE SLAB



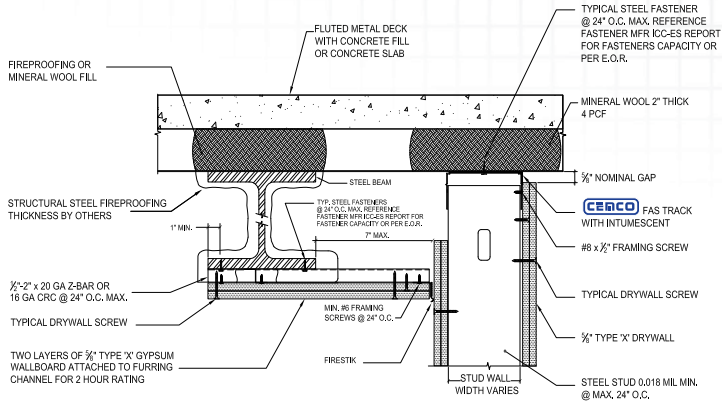
- HW-D-0554 CHASE WALL AT CONCRETE SLAB.
- 1 AND 2 HOUR FIRE RESISTANT ASSEMBLY.



(SEE UL LISTING FOR WALL FIRE RATING)
AVAILABLE IN 1 HOUR-SINGLE LAYER OF GYPSUM WALLBOARD

FAS TRACK DETAILS

FAS TRACK PARALLEL TO I-BEAM

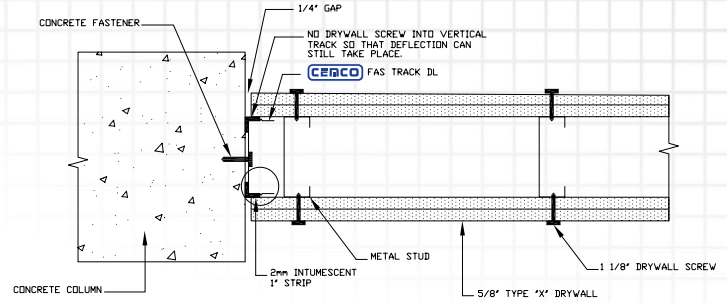


- HW-D-0556
- HEAD OF WALL SYSTEM 1, PARALLEL TO BEAM ASSEMBLY. UNDER FLUTED DECK. 5/8" NOMINAL JOINT. 100% MOVEMENT
- 1 AND 2 HOUR FIRE RESISTANT ASSEMBLY.



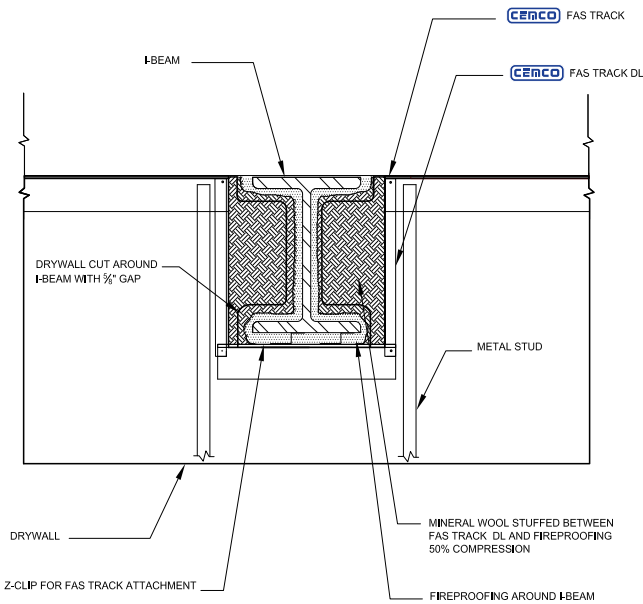
(SEE UL LISTING FOR WALL FIRE RATING). UL-2079 TEST STD. AVAILABLE IN 1 HOUR-SINGLE LAYER OF GYPSUM WALLBOARD

FAS TRACK VERTICAL WALL TIE-IN TO CONCRETE COLIMN



WW-S-0057
VERTICAL WALL TIE-IN TO CONCRETE COLIMN

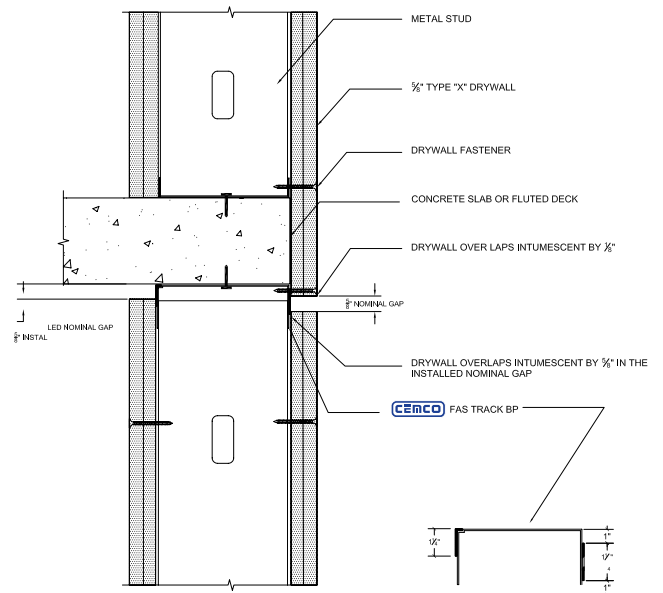
FAS TRACK PERPENDICULAR I-BEAM PENETRATION



- HW-D-0573
- PERPENDICULAR I - BEAM PENETRATION
- 5/8" NOMINAL GAP/1" TOTAL MOVEMENT
- 1 AND 2 HOUR FIRE RESISTANT ASSEMBLY.

(SEE UL LISTING FOR WALL FIRE RATING). UL-2079 TEST STD. AVAILABLE IN 1 HOUR-SINGLE LAYER OF GYPSUM WALLBOARD

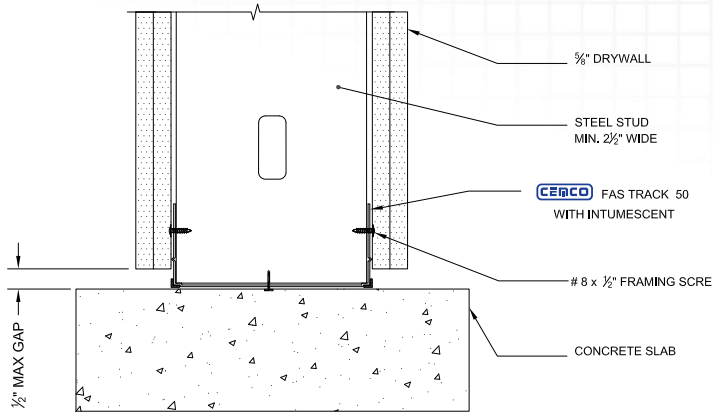
FAS TRACK HEAD OF WALL SYSTEM AT STAIR WELL SLAB



- HW-D-0596 STAIR WELL BY-PASS
- 1 AND 2 HOUR FIRE RESISTANT ASSEMBLY.

(SEE UL LISTING FOR WALL FIRE RATING). UL-2079 TEST STD. AVAILABLE IN 1 HOUR-SINGLE LAYER OF GYPSUM WALLBOARD

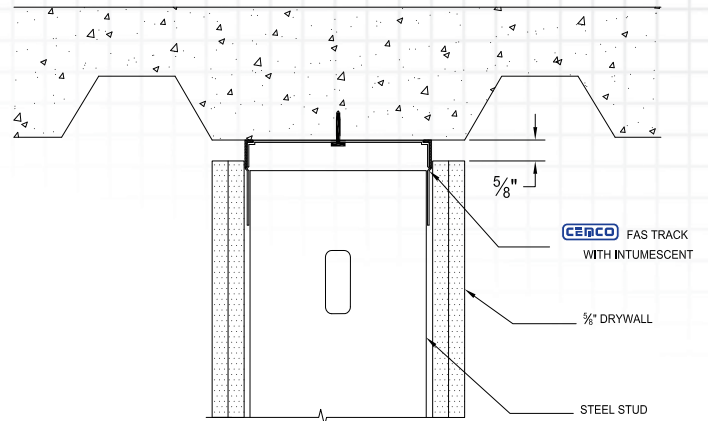
FAS TRACK BOTTOM OF WALL BW



- BW-S-0024 BOTTOM OF WALL STATIC JOINT.
- 1 AND 2 HOUR FIRE RESISTANT ASSEMBLY.

(SEE UL LISTING FOR WALL FIRE RATING). UL-2079 TEST STD.
AVAILABLE IN 1 HOUR-SINGLE LAYER OF GYPSUM WALLBOARD

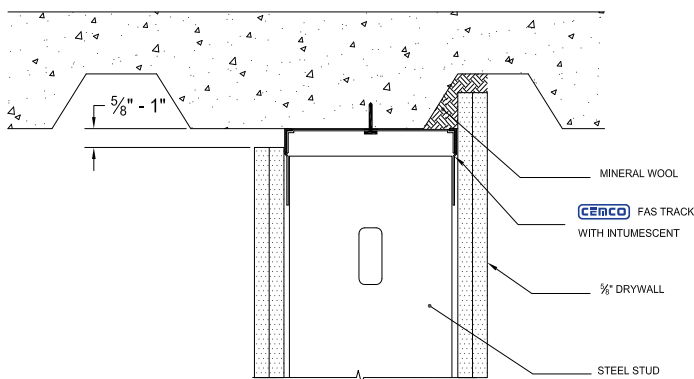
FAS TRACK PARALLEL TO FLUTE (A)



- HW-D-0620 PARALLEL TO FLUTED DECK/ DIRECT UNDER FLUTE
- JOINT SYSTEM: FOR 5/8" NOMINAL GAP: FAS TRACK / FAS TRACK DL
- FOR 1" NOMINAL GAP: FAS TRACK DL2 CONFIGURATION "A"
- 1 AND 2 HOUR FIRE RESISTANT ASSEMBLY.

(SEE UL LISTING FOR WALL FIRE RATING). UL-2079 TEST STD.
AVAILABLE IN 1 HOUR-SINGLE LAYER OF GYPSUM WALLBOARD

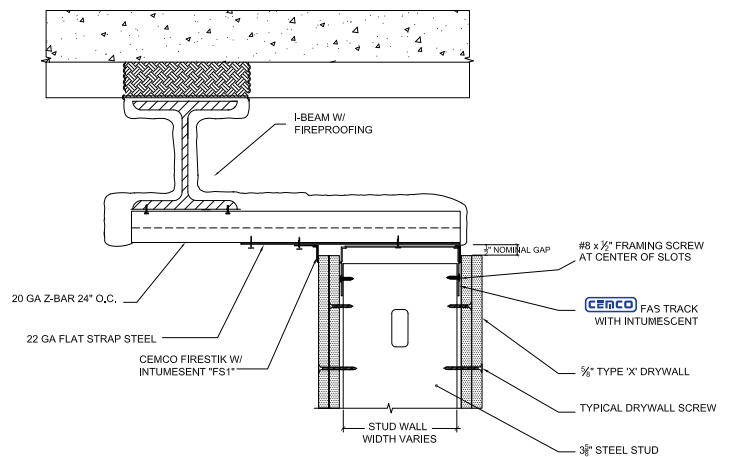
FAS TRACK PARALLEL TO FLUTE (B)



- HW-D-0620- PARALLEL UNDER PAN DECK
- CONFIGURATION B GAP 5/8"-1". 100% MOVEMENT
- 1 AND 2 HOUR FIRE RESISTANT ASSEMBLY.

(SEE UL LISTING FOR WALL FIRE RATING). UL-2079 TEST STD.
AVAILABLE IN 1 HOUR-SINGLE LAYER OF GYPSUM WALLBOARD

FAS TRACK STANDARD WALL CANTILEVER UNDER BEAM

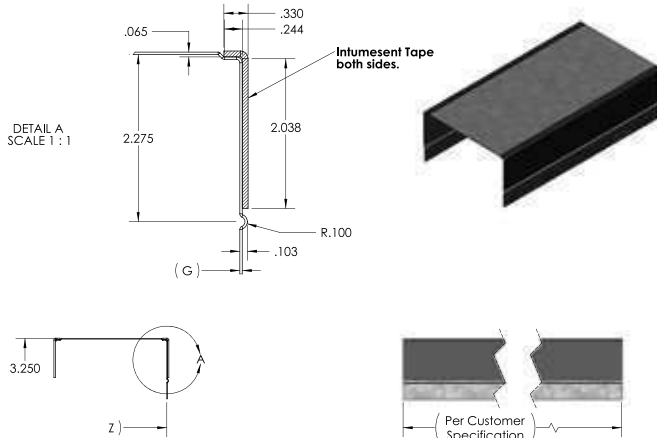


- HW-D-0652- HEAD OF WALL SYSTEM. OFF CENTERED UNDER BEAM
- 1" NOMINAL GAP, 100% MOVEMENT, 100% COMPRESSION, L-RATING LESS THAN 1CFM
- 2 HOUR FIRE RESISTANT ASSEMBLY.

(SEE UL LISTING FOR WALL FIRE RATING). UL-2079 TEST STD.
AVAILABLE IN 1 HOUR-SINGLE LAYER OF GYPSUM WALLBOARD

CEMCO FAS TRACK DL2

CEMCO's FAS Track 2 will now accommodate 2" total movement. With FAS Track 2 you will get the same fire, air and sound protection you get with the standard FAS Track but with the ability to handle up to a full 2" (two inches) of 100% unencumbered movement. This new system has been fully tested with Underwriters Laboratories, and is currently listed in no less than 12 new UL fire-rated assemblies.



(G) = .33" to .048"
(Z) = 2 1/2" to 8"

INTUMESCENT

- Cured 2mm thick material factory adhered to FAS Track profile.
- Outer layer of intumescent has a polyester film to protect from water, UV, dirt and damages.
- Expands at temperatures in excess of 300° Fahrenheit.
- Becomes a "hard char" expanding in excess of 35 times its original size.
- Fills HOW joint creating seal preventing passage of flame, heat, and smoke through joint.
- Cured and odor free providing immediate protection.
- Active ingredients protect either 1, 2 or 3 hour fire rated joints.
- In a pan deck assembly the intumescent expands over the mineral wool creating a seal and eliminating the need for fire resistant sprays.

PROFILE SPECIFICATIONS

- Hot dipped galvanized steel complying with ASTM A653 and ASTM A1003 Structural Grade 50 Type H for Grade 33 Type H for a minimum coating of G-60 and complies with ASTM C645.
- Track member width 2-1/2, 3-5/8", 4", 6", and 8".
- Gauge (mils) 20, 18, 16, and 14 GA (33, 43, 54, and 68 mil).
- Intumescent tape 2mm.
- Length 10' 0" standard custom sizes available.
- Deep leg track with 2-1/2" to 3-1/4".
- The external groove also provides increased sound ratings, as it reduces sound vibrations.
- The external groove provides an air tight assembly when it contact with drywall.

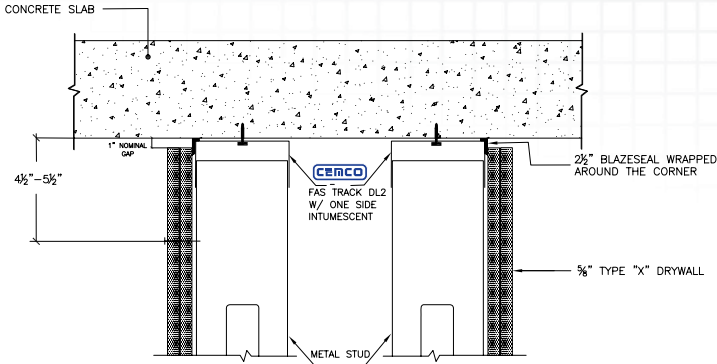
Nominal Joint Width	100% Compression	100% Extension	Deflection = Compression + Extension	Compression Only
1"	1"	1"	2"	2"

Patent No. US 7, 617, 643 B2

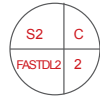
Track Member Width	Length	Gauge (mils)
2 1/2", 3 5/8", 4", 6", and 8"	10' 0"	20, 18, 16, and 14 GA (33, 43, 54, and 68 mil)

Drift slots on the web are optional.

FAS TRACK CHASE WALL AT CONCRETE SLAB

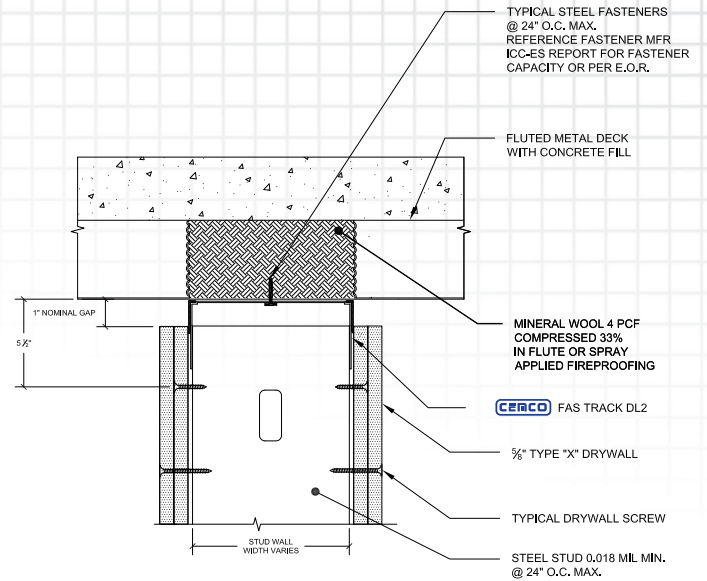


- HW-D-0576 CHASE WALL AT CONCRETE SLAB.
- HEAD OF WALL SYSTEM 1, PARALLEL TO BEAM ASSEMBLY.
- 1 AND 2 HOUR FIRE RESISTANT ASSEMBLY.



(SEE UL LISTING FOR WALL FIRE RATING). UL-2079 TEST STD. AVAILABLE IN 1 HOUR-SINGLE LAYER OF GYPSUM WALLBOARD

FAS TRACK PERPENDICULAR TO FLUTED DECK

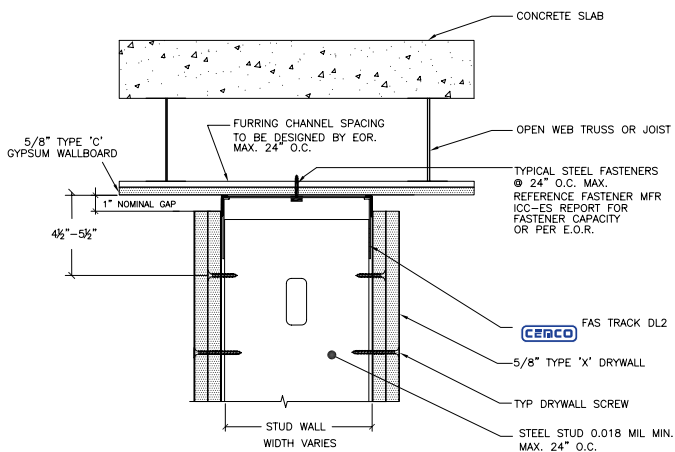


- HW-D-0577 PERPENDICULAR TO FLUTED DECK.
- 100% COMPRESSION & 100% EXTENSION
- HEAD OF WALL SYSTEM 1, FAS TRACK DL2 PERPENDICULAR UNDER FLUTED DECK.
- 1 AND 2 HOUR FIRE RESISTANT ASSEMBLY.



(SEE UL LISTING FOR WALL FIRE RATING) UL-2079 TEST STD. AVAILABLE IN 1 HOUR-SINGLE LAYER OF GYPSUM WALLBOARD

FAS TRACK GYPSUM WALLBOARD CEILING

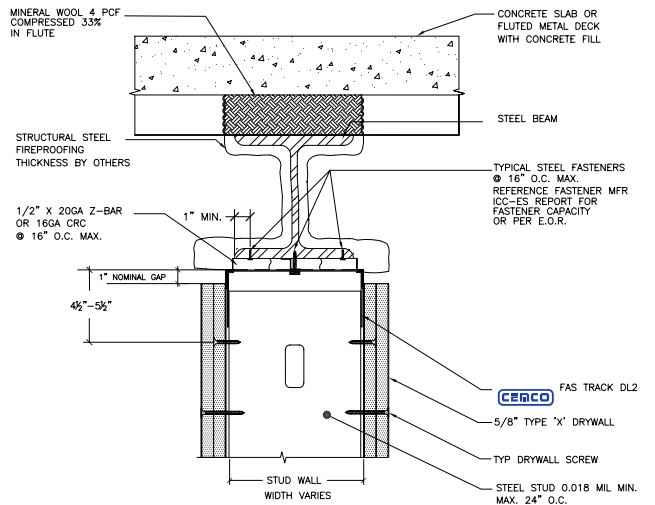


- HW-D-0578 GYPSUM WALLBOARD CEILING.
- HEAD OF WALL SYSTEM 9, GYPSUM WALLBOARD CEILING.
- 1 AND 2 HOUR FIRE RESISTANT ASSEMBLY.



(SEE UL LISTING FOR WALL FIRE RATING). UL-2079 TEST STD. AVAILABLE IN 1 HOUR-SINGLE LAYER OF GYPSUM WALLBOARD

FAS TRACK CENTERED DIRECTLY UNDER BEAM 2 INCH (1)



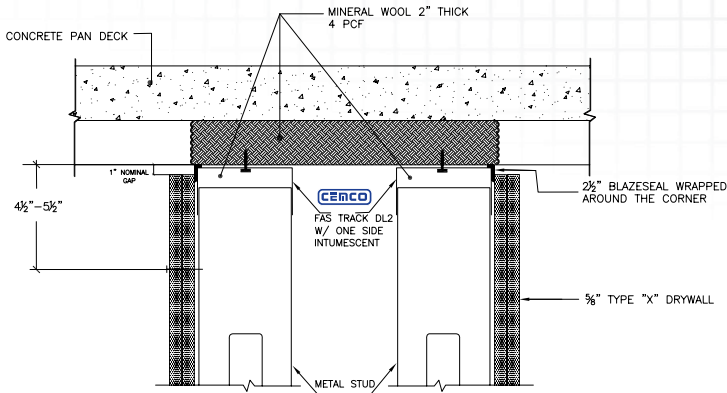
- HW-D-0579 CENTERED DIRECT UNDER BEAM.
- HEAD OF WALL SYSTEM 9, CENTERED DIRECT UNDER BEAM.
- 1 AND 2 HOUR FIRE RESISTANT ASSEMBLY.



(SEE UL LISTING FOR WALL FIRE RATING). UL-2079 TEST STD. AVAILABLE IN 1 HOUR-SINGLE LAYER OF GYPSUM WALLBOARD

FAS TRACK DL2 DETAILS

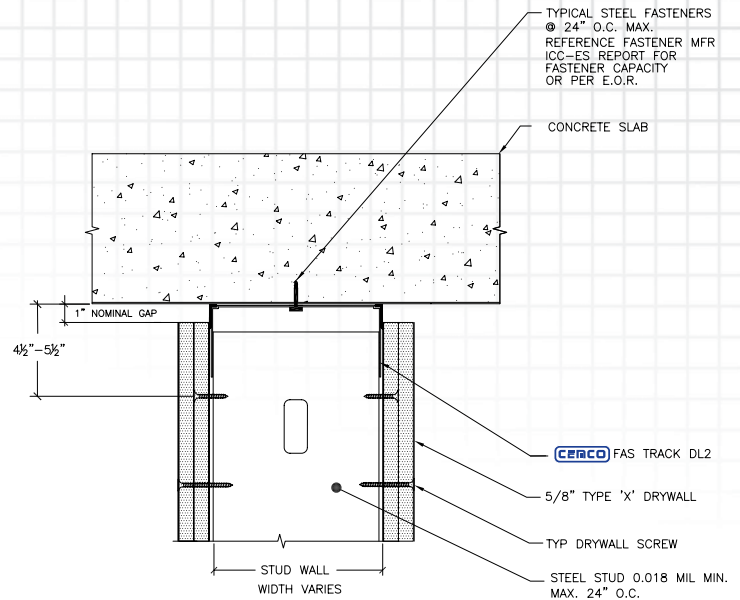
FAS TRACK CHASE WALL AT PAN DECK 2 INCH



- HW-D-0580 PERPENDICULAR TO FLUTE DECK.
- CHASE WALL SYSTEM 1, PERPENDICULAR TO FLUTE DECK.
- 1 AND 2 HOUR FIRE RESISTANT ASSEMBLY.

(SEE UL LISTING FOR WALL FIRE RATING). UL-2079 TEST STD.
AVAILABLE IN 1 HOUR-SINGLE LAYER OF GYPSUM WALLBOARD

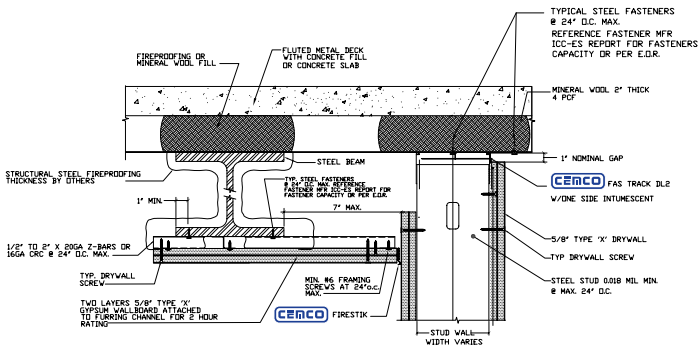
FAS TRACK CONCRETE SLAB 2 INCH



- HW-D-0581 CONCRETE SLAB.
- HEAD OF WALL SYSTEM 1, FAS TRACK DL2 UNDER CONCRETE SLAB.
- 1 AND 2 HOUR FIRE RESISTANT ASSEMBLY.

(SEE UL LISTING FOR WALL FIRE RATING). UL-2079 TEST STD.
AVAILABLE IN 1 HOUR-SINGLE LAYER OF GYPSUM WALLBOARD

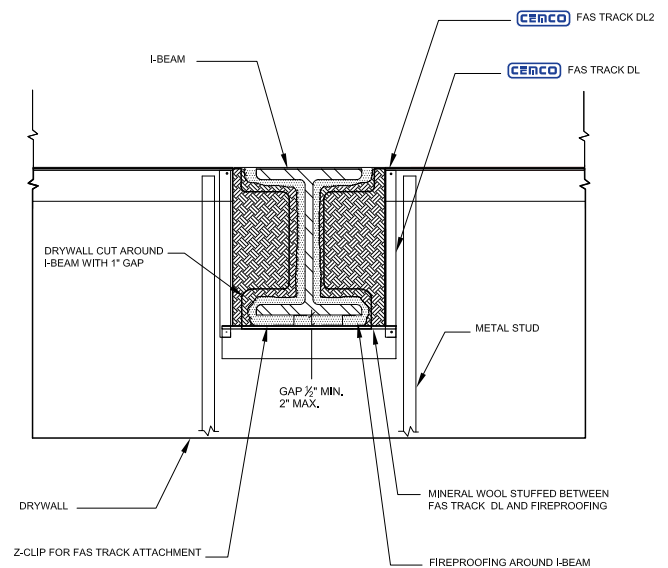
FAS TRACK PARALLEL WITH FLUTED DECK 2 INCH



- HW-D-0582 PARALLEL TO BEAM ASSEMBLY.
- HEAD OF WALL SYSTEM 1, PARALLEL TO BEAM ASSEMBLY UNDER FLUTED DECK.
- 1 AND 2 HOUR FIRE RESISTANT ASSEMBLY.

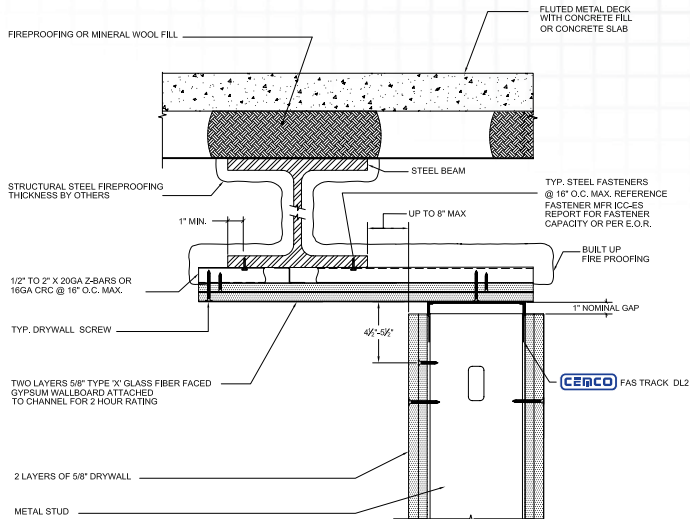
(SEE UL LISTING FOR WALL FIRE RATING). UL-2079 TEST STD.
AVAILABLE IN 1 HOUR-SINGLE LAYER OF GYPSUM WALLBOARD

FAS TRACK PERPENDICULAR I-BEAM PENETRATION 2 INCH



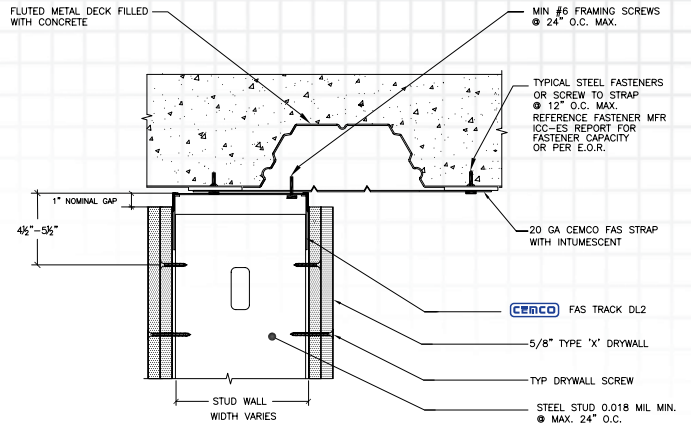
HW-D-0583 PERPENDICULAR I-BEAM PENETRATION
1" NOMINAL GAP/2" TOTAL MOVEMENT

FAS TRACK CANILEVER UNDER I-BEAM 2

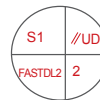


• HW-D-0601 REGULAR WALL SYSTEM

FAS TRACK PARALLEL WITH FLUTED DECK 2 INCH MOVEMENT

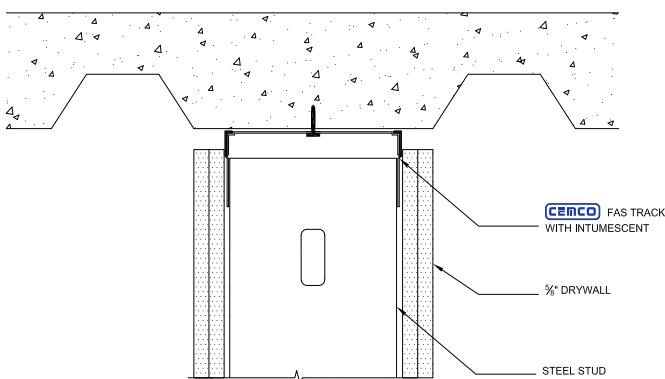


- HW-D-0587 PARALLEL WITH FLUTED DECK.
- HEAD OF WALL SYSTEM 1, PARALLEL AND OFFSET UNDER FLUTED DECK.
- 1 AND 2 HOUR FIRE RESISTANT ASSEMBLY.



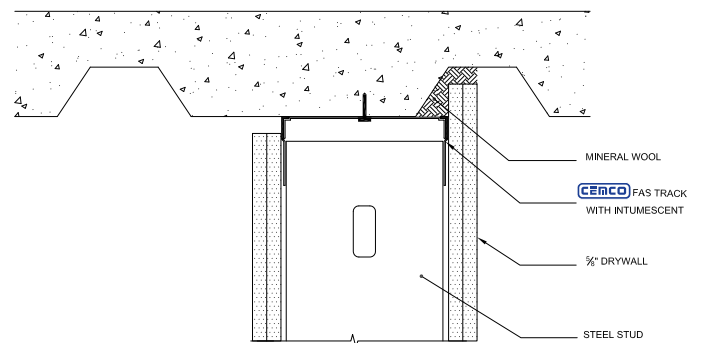
(SEE UL LISTING FOR WALL FIRE RATING). UL-2079 TEST STD. AVAILABLE IN 1 HOUR-SINGLE LAYER OF GYPSUM WALLBOARD

FAS TRACK PARALLEL TO FLUTE (A)



• HW-D-0620 PARALLEL UNDER PAN DECK CONFIGURATION A GAP 1/2\"-1\"

FAS TRACK PARALLEL TO FLUTE (B)

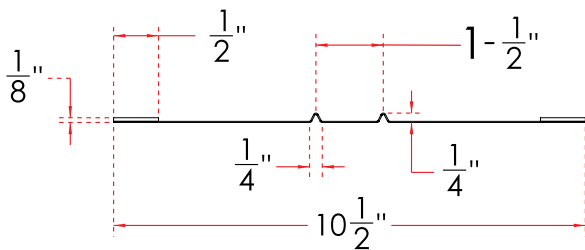
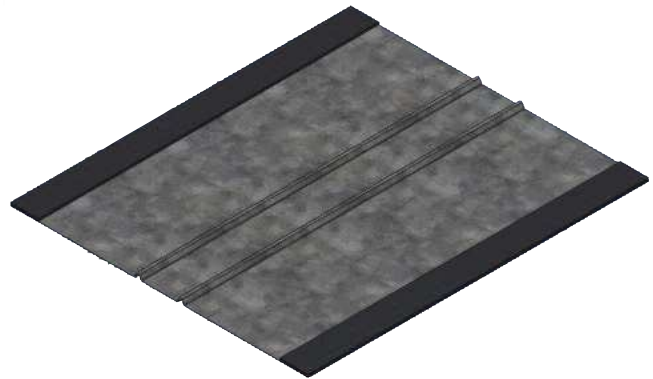


• HW-D-0620- PARALLEL UNDER PAN DECK CONFIGURATION A GAP 1/2\"-1\" •100% MOVEMENT



CEMCO's NEW FAS Strap is the first accessory in the "Fire Management" product line. FAS Strap eliminates the requirement for filling the fluted deck with mineral wool or fire proofing for all walls running parallel with the fluted deck. By incorporating cold formed steel with intumescent into a composite product, CEMCO has again created a single step application that saves labor, time, and money. The UL assembly #HW-D-0524 allows the installer to use any one of CEMCO's top tracks. When combined with CEMCO FAS Track, there is no need for fire caulking or fire sprays.

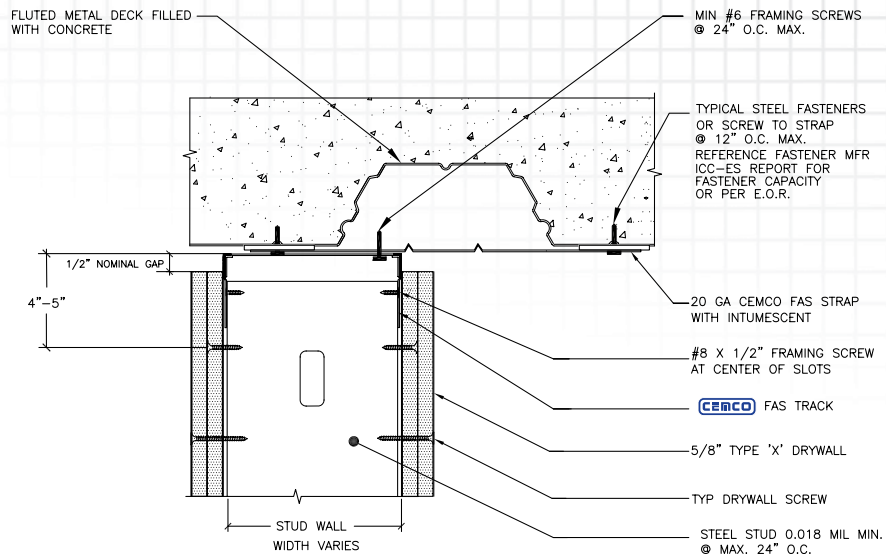
FAS Strap is made from 33, 43, 54, & 68 MIL thick galvanized sheet steel. The standard width is 10-1/2" x 10'-0" long; depending on the width of the pan deck custom widths are available. The profile features two V-grooves running parallel down the center for rigidity. Along both sides of the width a strip of 1" intumescent runs continuous down the length. The intumescent serves two purposes first to seal off any fire from passing from one side of the wall to the other and second to reduce sound transmissions that are transmitted through metal to metal connections.



Member Width	Length	Gauge (mils)
10-1/2"	10' 0"	20, 18, 16, and 14 GA (33, 43, 54, and 68 mil)



FAS TRACK PARALLEL WITH FLUTED DECK 1-1/4" MOVEMENT

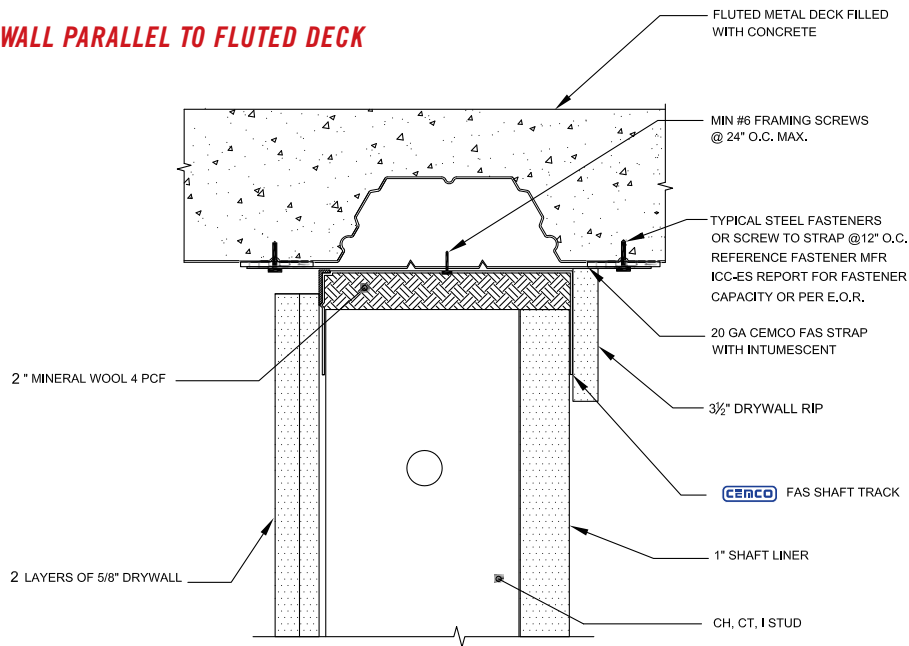


- HW-D-0524 PARALLEL WITH FLUTED DECK.
- HEAD OF WALL SYSTEM 1, PARALLEL AND OFFSET UNDER FLUTED DECK.
- 1 AND 2 HOUR FIRE RESISTANT ASSEMBLY.



(SEE UL LISTING FOR WALL FIRE RATING). UL-2079 TEST STD. AVAILABLE IN 1 HOUR-SINGLE LAYER OF GYPSUM WALLBOARD

FAS TRACK SHAFT WALL PARALLEL TO FLUTED DECK



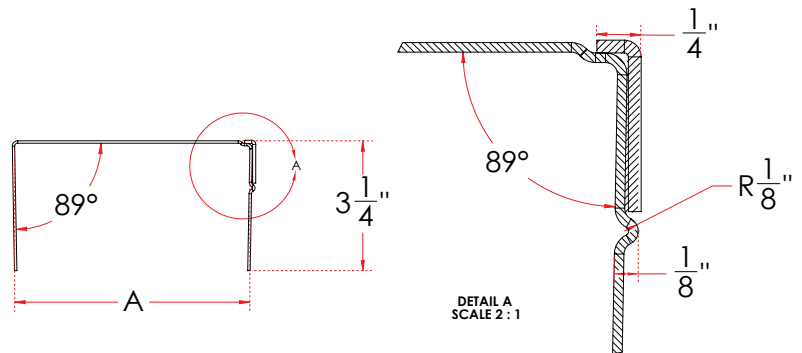
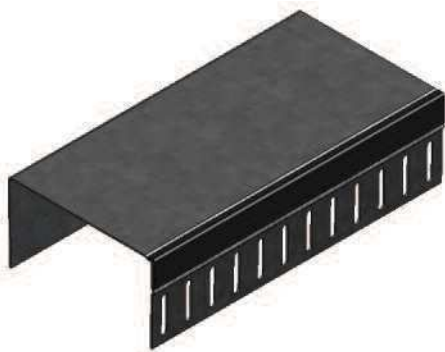
- HW-D-0524 SHAFT WALL PARALLEL TO FLUTED DECK.
- 1 AND 2 HOUR FIRE RESISTANT ASSEMBLY.

(SEE UL LISTING FOR WALL FIRE RATING). UL-2079 TEST STD.

FAS SHAFT WALL TRACK - provides 1-1/4" total movement



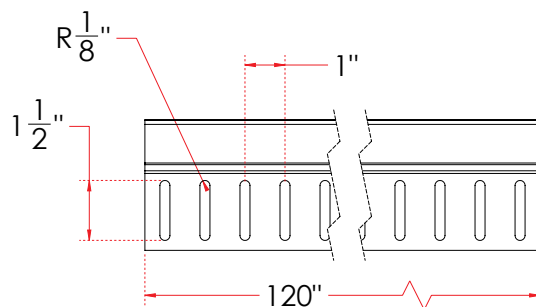
FAS Shaft Wall Track is an exclusive CEMCO Fire Management product that provides Firestopping for dynamic joints on shaft wall assemblies allowing up to 1" total movement. The flexibility of the FAS Shaft Wall Track product is used to protect dynamic joints in one and two hour rated shaft wall systems while still providing Level 3 (Seismic) movement. The unique design provides unencumbered movement by eliminating any requirements of fire caulking, spray, or contoured drywall cuts. The simple one step installation allows the shaft wall assembly to build from one side of the wall.



NOMINAL JOINT WIDTH	100% COMPRESSION	100% EXTENSION	DEFLECTION = COMPRESSION + EXT.	COMPRESSION ONLY
5/8" (FAS Track)	5/8"	5/8"	1-1/4"	1-1/4"

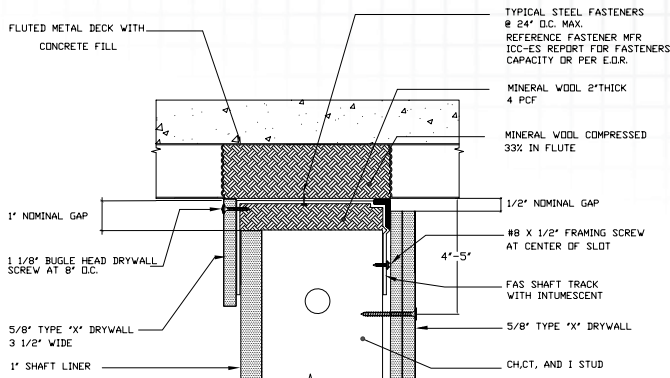
Track Member Width (A)	Length	Gauge (mils)
2-1/2", 4" and 6"	10' 0"	20 GA (33mil)

FAS Shaft Wall Track has all the same qualities of FAS Track; the front leg is exactly the same on both tracks. The difference is in the back leg; on the FAS Shaft Wall Track the back leg is solid and used as a receiver for 5/8" type "X" drywall. The 3 1/2" drywall rip is used to insulate the Head of Wall during a fire and allows the shaft wall assembly to receive a two-hour fire rating on both sides of the shaft wall.



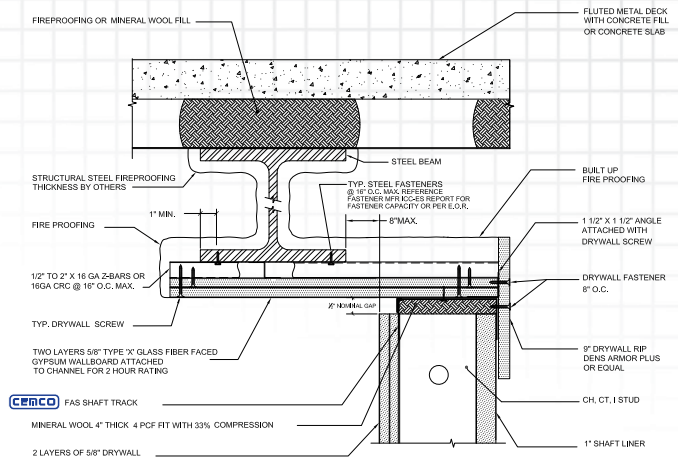
FAS SHAFT TRACK DETAILS - PROVIDES 1-1/4" MOVEMENT

FAS TRACK FLUTED DECK SHAFT WALL 1-1/4 INCH



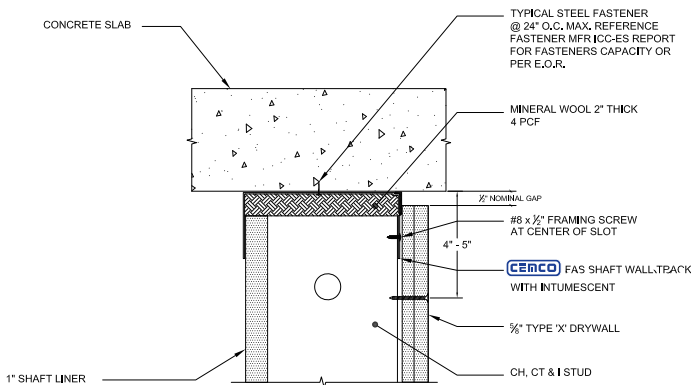
- HW-D-0525 SHAFT WALL AT FLUTED DECK.
 - HEAD OF WALL SYSTEM 1, PERPENDICULAR TO SHAFT WALL UNDER FLUTED DECK.
 - 1 AND 2 HOUR FIRE RESISTANT ASSEMBLY.
- (SEE UL LISTING FOR WALL FIRE RATING). UL-2079 TEST STD. AVAILABLE IN 1 HOUR-SINGLE LAYER OF GYPSUM WALLBOARD

FAS TRACK SHAFT WALL PARALLEL CANTILEVER UNDER BEAM



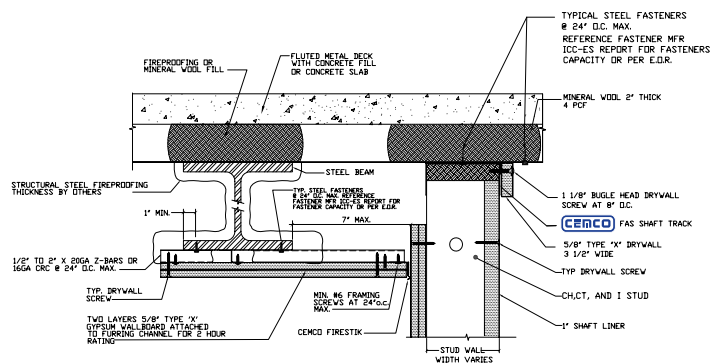
- HW-D-0598 PARALLEL CANTILEVER UNDER SHAFT WALL ASSEMBLY 1/2" NOMINAL GAP

FAS TRACK CONCRETE WITH SHAFT WALL 1-1/4 INCH MOVEMENT



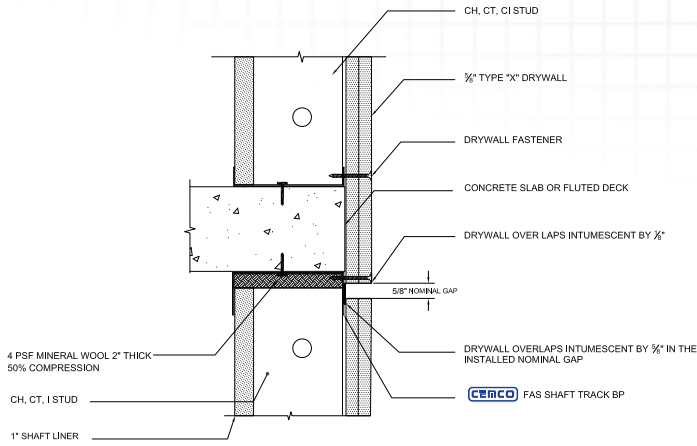
- HW-D-0557 SHAFT WALL SYSTEM 2. SHAFT WALL
 - 1 AND 2 HOUR FIRE RESISTANT ASSEMBLY.
- (SEE UL LISTING FOR WALL FIRE RATING). UL-2079 TEST STD. AVAILABLE IN 1 HOUR-SINGLE LAYER OF GYPSUM WALLBOARD

FAS TRACK SHAFT WALL PARALLEL TO BEAM 1 INCH MOVEMENT



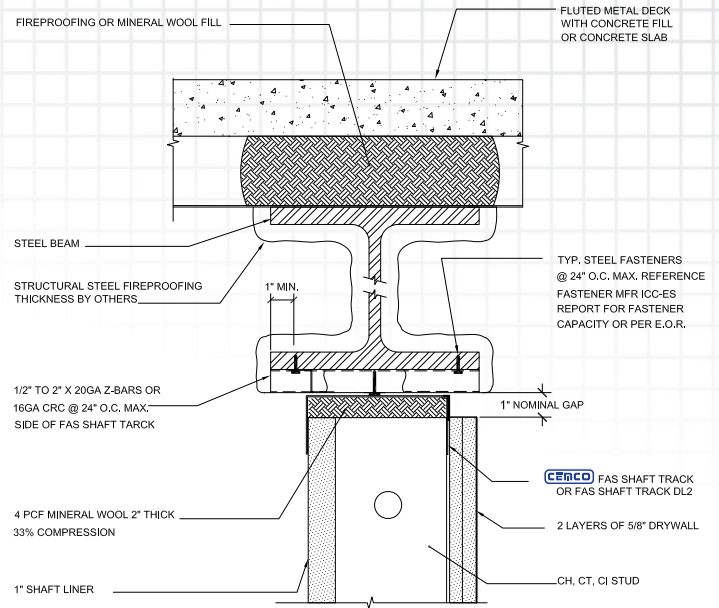
- HW-D-0563 SHAFT WALL PARALLEL TO I-BEAM.
 - HEAD OF WALL SYSTEM 1, PERPENDICULAR TO SHAFT WALL UNDER FLUTED DECK.
 - PROVIDES 1-1/4" - 2" TOTAL MOVEMENT
 - 1 AND 2 HOUR FIRE RESISTANT ASSEMBLY.
- (SEE UL LISTING FOR WALL FIRE RATING). UL-2079 TEST STD. AVAILABLE IN 1 HOUR-SINGLE LAYER OF GYPSUM WALLBOARD

FAS TRACK SHAFT WALL SYSTEM AT STAIR WELL SLAB



• HW-D-0621 SHAFT WALL SYSTEM AT STAIR WELL SLAB

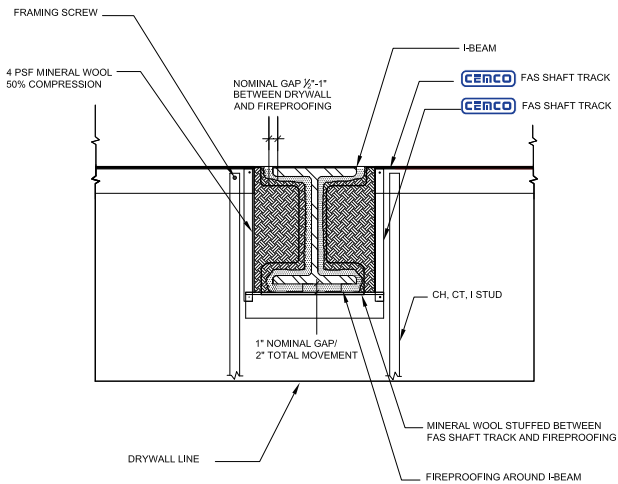
FAS TRACK SHAFT WALL UNDER BEAM



- HW-D-0622- SHAFT WALL UNDER BEAM
- 100% COMPRESSION & 100% EXTENSION
- 1&2 HOUR FIRE RESISTANT ASSMNBLY

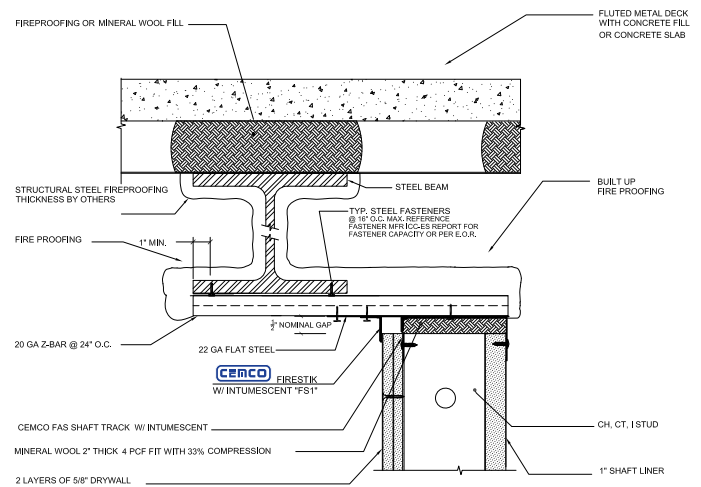
(SEE UL LISTING FOR WALL FIRE RATING). UL-2079 TEST STD. AVAILABLE IN 1 HOUR-SINGLE LAYER OF GYPSUM WALLBOARD

FAS TRACK BEAM PENETRATION AT SHAFT WALL



- HW-D-0623- BEAM PENETRATION AT SHAFT WALL..
- NOMINAL JOINT 1/2\" -1\"
- 100% MOVEMENT

FAS TRACK SHAFT WALL CANTILEVER UNDER BEAM

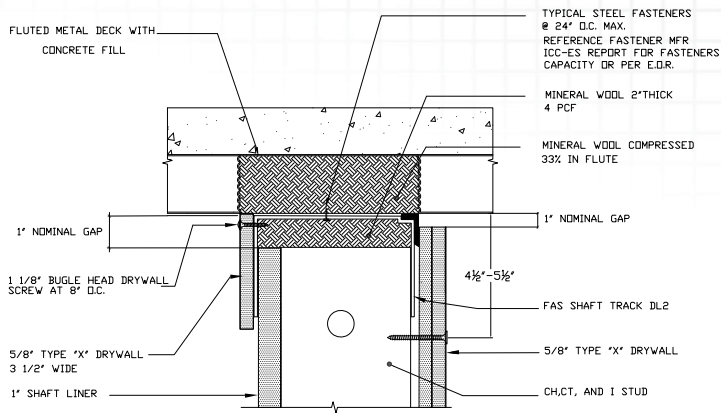


- HW-D-0653 PARALLEL CANTILEVER UNDER SHAFT WALL ASSEMBLY
- 1\" NOMINAL GAP, 100% EXTENSION, 100% COMPRESSION L-RATING LESS THAN 1CFM
- 2 HOUR FIRE RESISTANT ASSMNBLY

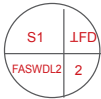
(SEE UL LISTING FOR WALL FIRE RATING). UL-2079 TEST STD. AVAILABLE IN 1 HOUR-SINGLE LAYER OF GYPSUM WALLBOARD

FAS SHAFT DL2 DETAILS - PROVIDES 2" TOTAL MOVEMENT

FAS TRACK SHAFT WALL FLUTED DECK

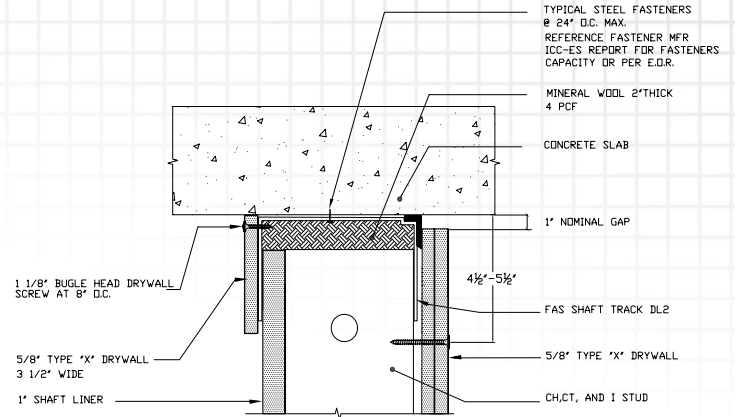


- HW-D-0584 SHAFT WALL FLUTED DECK
- HEAD OF WALL SYSTEM 1, PERPENDICULAR TO SHAFT WALL UNDER FLUTED DECK
- 1 AND 2 HOUR FIRE RESISTANT ASSEMBLY.



(SEE UL LISTING FOR WALL FIRE RATING) UL-2079 TEST STD. AVAILABLE IN 1 HOUR-SINGLE LAYER OF GYPSUM WALLBOARD

FAS TRACK SHAFT WALL AT CONCRETE SLAB 2 INCH MOVEMENT

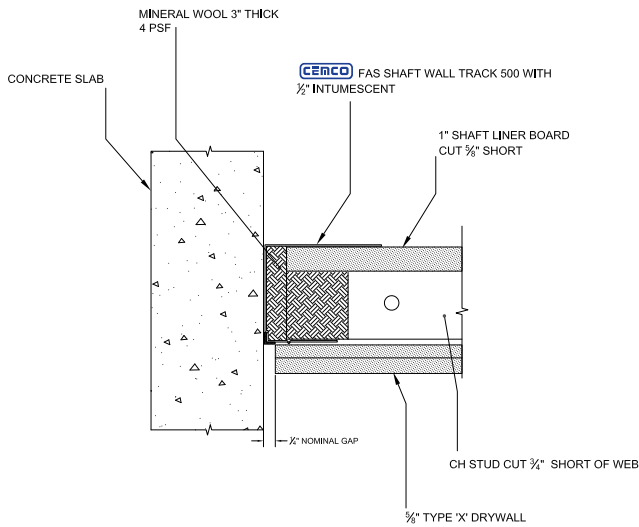


- HW-D-0585 SHAFT WALL AT CONCRETE SLAB
- HEAD OF WALL SYSTEM 2, AT CONCRETE SLAB
- 1 AND 2 HOUR FIRE RESISTANT ASSEMBLY.



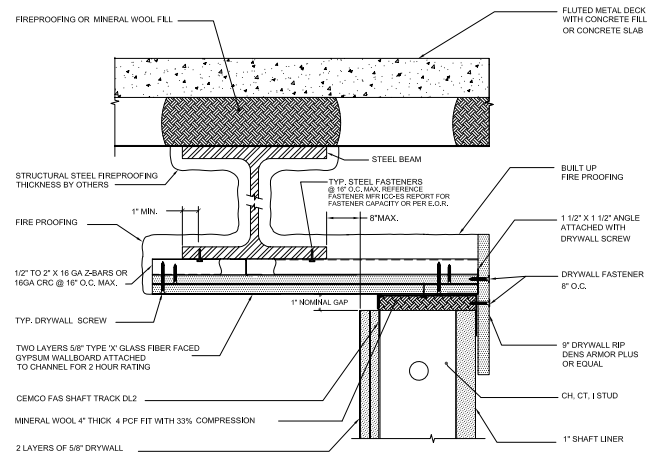
(SEE UL LISTING FOR WALL FIRE RATING) UL-2079 TEST STD. AVAILABLE IN 1 HOUR-SINGLE LAYER OF GYPSUM WALLBOARD

FAS TRACK SHAFT WALL VERTICAL TIE-IN



- WW-S-0061 SHAFT WALL VERTICAL TIE-IN
- 1&2 HR FIRE RESISTANCE ASSEMBLY

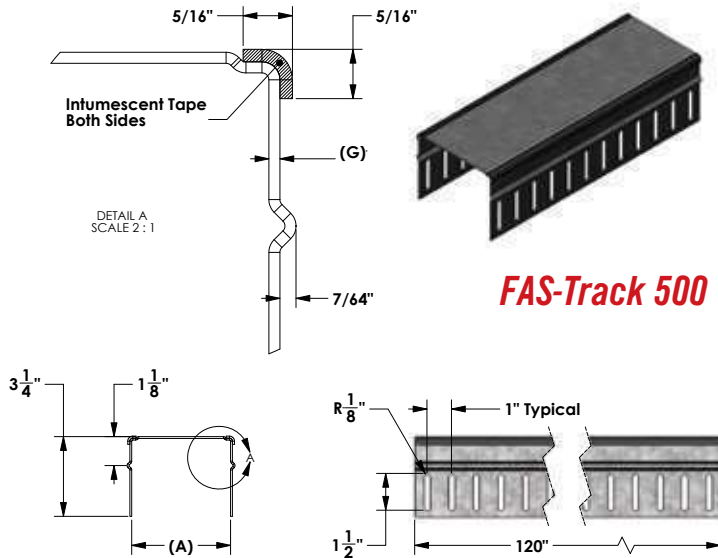
FAS TRACK PARALLEL CANTILEVER UNDER SHAFT WALL



- HW-D-0599 PARALLEL CANTILEVER UNDER SHAFT WALL ASSEMBLY
- 1" NOMINAL GAP

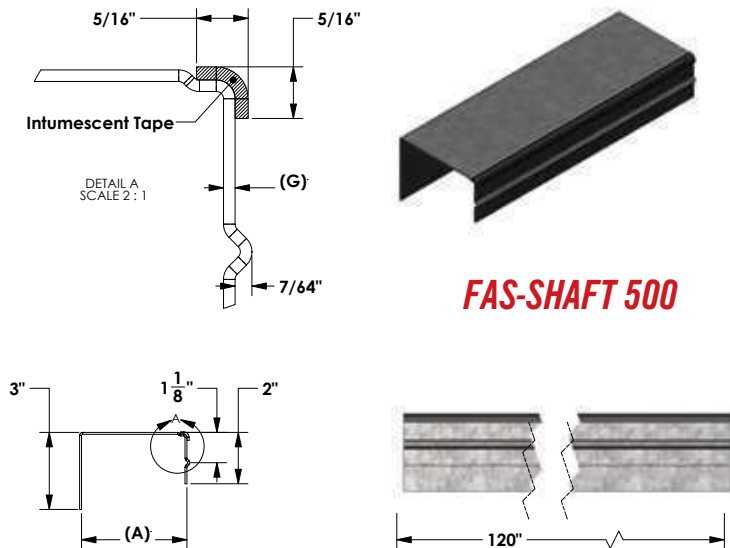
CEMCO FAS TRACK 500

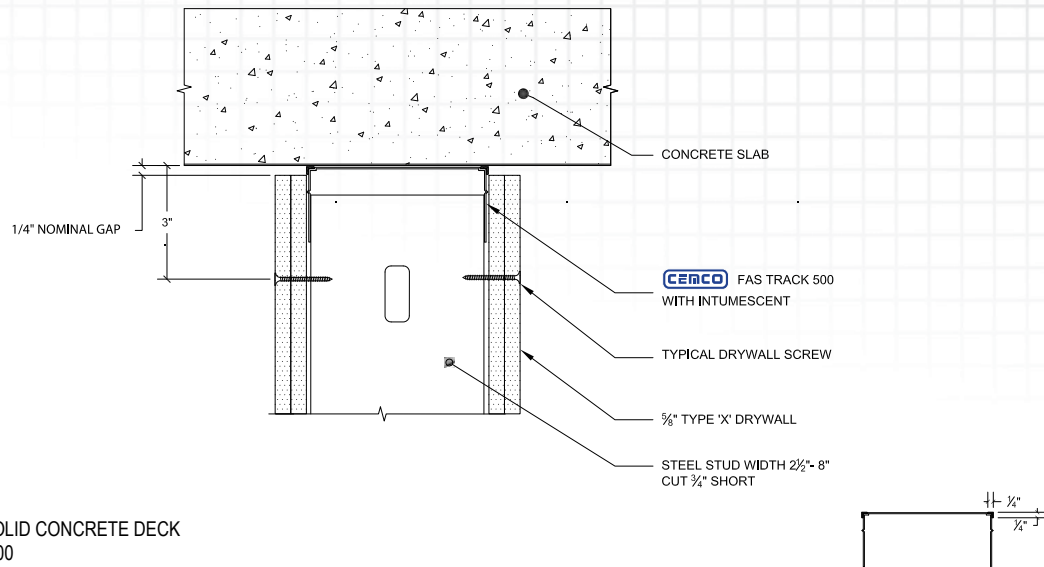
FAS TRACK 500 is the latest offering in the CEMCO Fire Management Product Line. FAS Track 500 will provide 1/2" total movement for solid concrete deck dynamic head of wall fire rated joints according to the strict requirements of UL 2079. The unique profile allows the intumescent to be pinched between the concrete deck and the top web of the FAS Track 500 at all times. This permanent gasket style seal provides smoke protection in ambient conditions and received the best possible rating from UL of below 1 CFM.



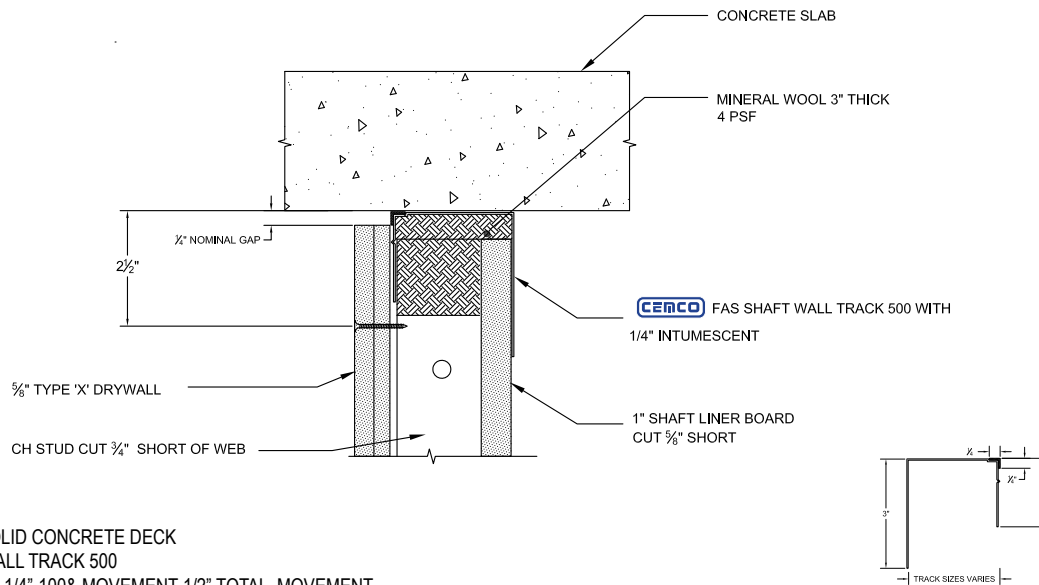
CEMCO FAS SHAFT 500

FAS Shaft 500 is the latest "Shaft Wall" offering in the CEMCO Fire Management Product line. FAS Shaft 500 will provide 1/2" total movement in solid concrete deck dynamic head of wall fire rated joints. Up until now Shaft Wall dynamic head of wall joints have been very difficult to achieve and require the installer to apply fire caulking or fire spray above the shaft liner and around the studs. There is NO fire caulking or spray required with FAS Shaft 500 or FAS Track 500 making it the clean choice.

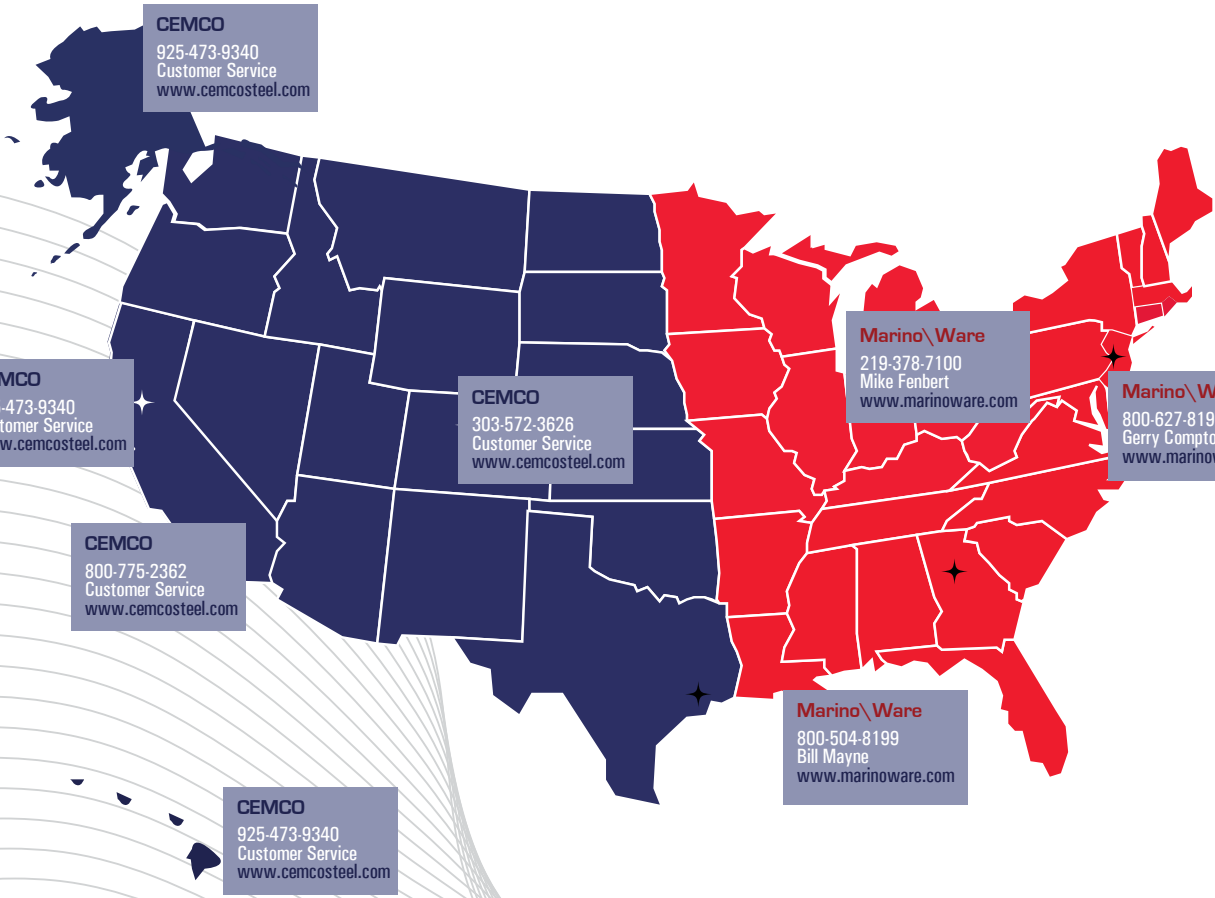




- HW-D-0625 SOLID CONCRETE DECK
- FAS TRACK 500
- 100% MOVEMENT-1/2" TOTAL MOVEMENT



- HW-D-0624 SOLID CONCRETE DECK
- FAS SHAFT WALL TRACK 500
- NOMINAL GAP 1/4"-100& MOVEMENT-1/2" TOTAL MOVEMENT
- SHAFT WALL ASSEMBLY



800.775.2362
WWW.CEMCOSTEEL.COM

Corporate Headquarters &
Main Manufacturing Facility
263 North Covina Lane
City of Industry, CA 91744

800.775.2362 Phone
626.330.7598 Fax

Northern California
Manufacturing Facility
1001-A Pittsburg Antioch Hwy
Pittsburg, CA 94565

925.473.9340 Phone
925.473.9341 Fax

Denver Colorado
Manufacturing Facility
490 Osage Street
Denver, CO 80204

303.572.3626 Phone
303.572.3627 Fax



Printed on 50% recycled
25% post-consumer waste

MADE IN AMERICA