

To: **Respond**<sup>®</sup> Installer

From: Applications Engineer

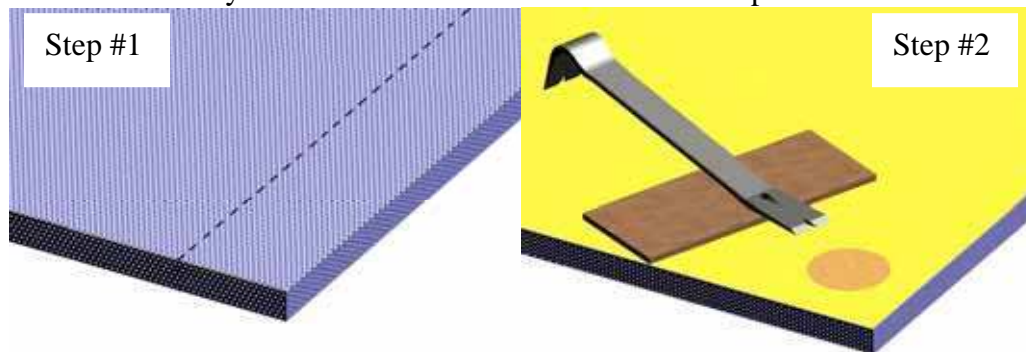
Re: **Field Modification of Ultimate 1000, 1500 and 3000 Panels**

Please note that the Respond product is usually provided in exact custom sizes and shapes such that field alteration is not required. However, there are situations where field cutting is necessary.

*The following are guidelines given in good faith to help avoid common errors. They are not intended to be a step-by-step list of instructions or a checklist, and it is assumed the installer has general construction knowledge. CONWED bears no responsibility for any installation actions taken or not taken, and is not responsible for installer selection.*

### **Ultimate 1000 and 3000 (Copoly Only)**

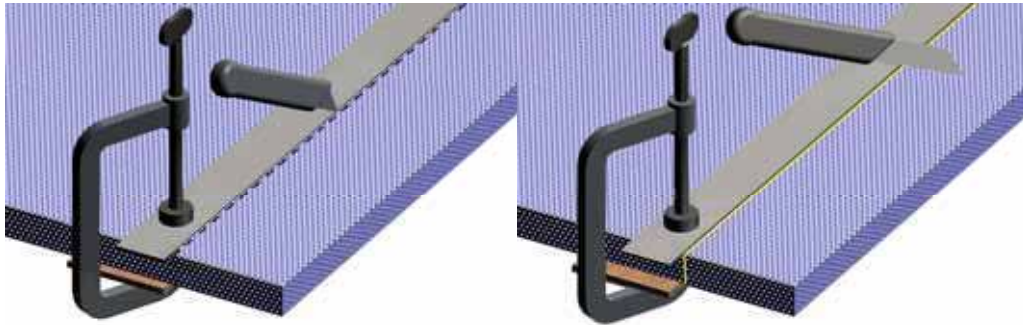
1. Measure carefully and mark the location of the cut on the panel face.



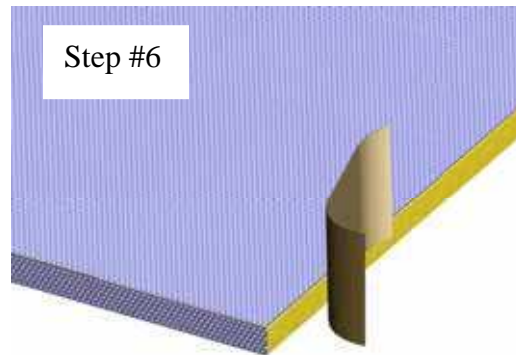
2. If your panels have resin spots, determine if these align with the cut. If so, remove using a pry bar at the resin spot edge using a thin board or similar as the fulcrum.
3. Clamp a metal straight edge to the panel on the cut line (or an appropriate circle template or etcetera).
4. Using a sharp utility knife, cut through the plastic using 3 or 4 light passes.

Steps #3 and 4

Step #5



5. With a standard long knife, cut through the underlying fiberglass.



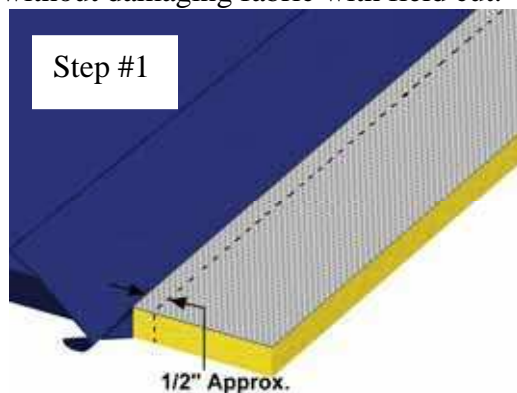
6. Lightly sand the cut plastic edge.

Care should be taken so that fiberglass is not exposed, either by butting up against other panels or trim, or by use of an appropriate escutcheon plate.

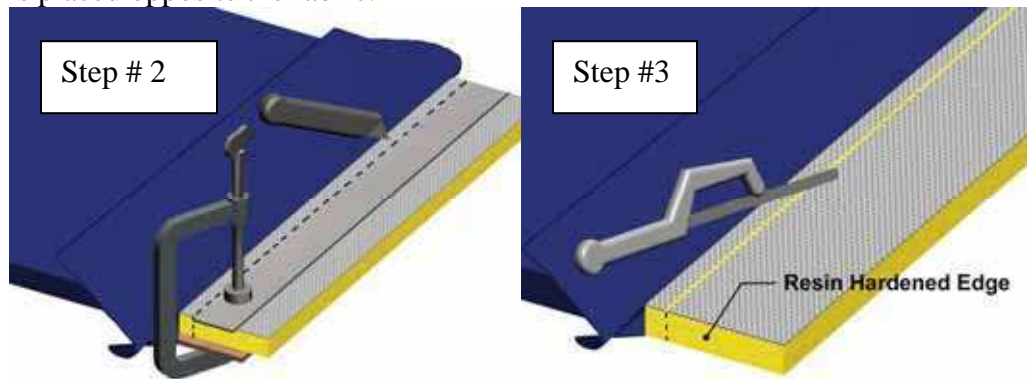
Power saws are not recommended: they can easily cause delamination of the copoly plastic face from the fiberglass substrate!

### **Ultimate 1500 (Fabric-covered Copoly)**

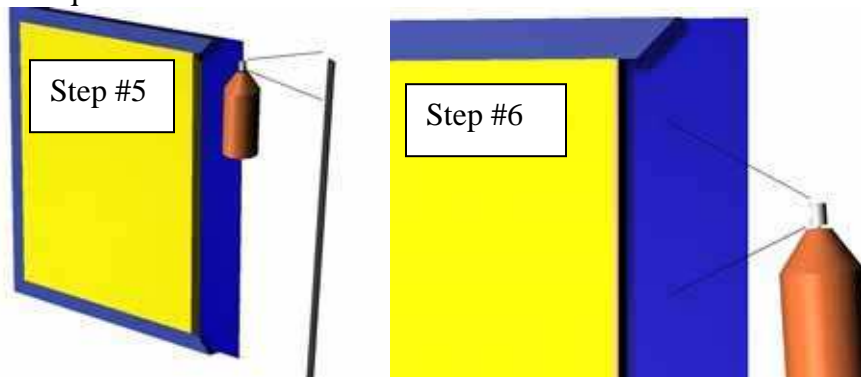
1. Pull back fabric just beyond field cut. Keep as close to field cut point as possible without damaging fabric with field cut.



2. Cut substrate as outlined for Ultimate 1000 and 3000. Note that the straight edge is placed opposite the fabric.



3. Cut resin-hardened edge with a fine-toothed saw.
4. Trim the fabric so it will wrap approximately 2" onto the back of the panel.
5. Cut strips of laminate (Formica), hardboard or similar material to match substrate thickness. Apply to the cut edge with spray adhesive such as 3M Spray 77. This is required for a hardened edge and may be omitted if a hardened edge is not required.



6. Apply spray adhesive to fabric back, panel edge and 2" of panel back. Wrap fabric to back and tailor corners to match unaffected corners using a sharp scissors.