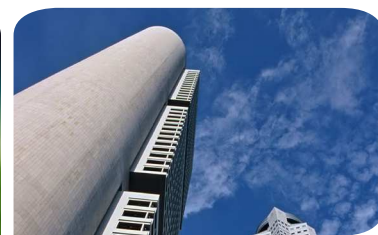


CONWED Designscape® Acoustic Products

HELPING YOU ACHIEVE LEED® CERTIFICATION



CONWED products help improve sound quality in commercial buildings while adding to the aesthetic appeal of the project. This document applies to the LEED New Construction and Major Renovations, LEED Commercial Interiors, LEED Core & Shell, LEED for Schools and LEED for Existing Buildings, Operations & Maintenance products. As you pursue LEED Certification, rely on the products and expertise of CONWED.

LEED Certification and the awarding of credits, is based on the overall project design, properly designed building systems and assemblies, and the performance of the project as a whole. CONWED Products can be a component of many of these systems and assemblies, with all components within those systems and assemblies considered to assess compliance with the LEED Rating System used for certification within a given category. CONWED Products contribute to the categories listed below.

CONWED Designscape® Acoustic Products:

- ACT Panels
- Access Ceiling System
- Baffles
- Ultimate 1500 Panels
- Ultimate 3000 Panels
- Soft Texture Panels
- Subtle Texture Panels
- High Impact Panels
- Low Frequency Tuner Panel
- Urban Forest Panel
- Curved Absorptive Clouds
- Custom Curved Panel
- Min-Tack Panel
- Min-ACT Panel

Table 1

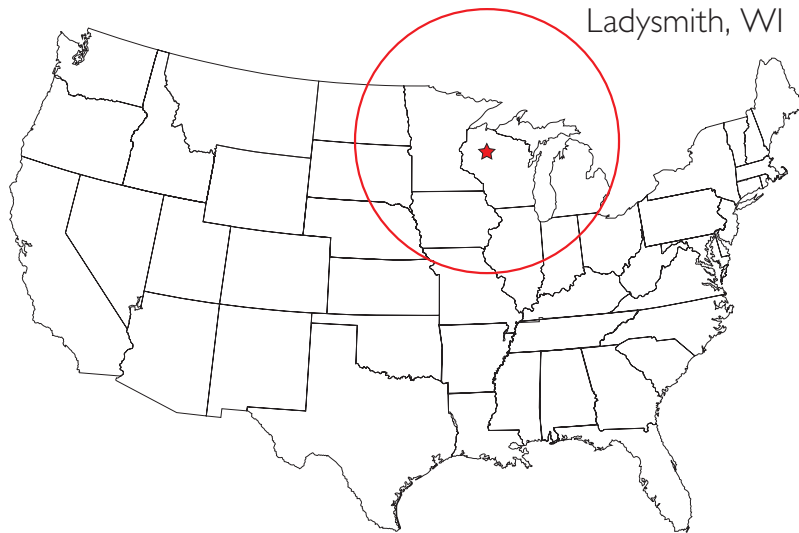
Contribution to LEED Requirement

LEED Credit Category	LEED Requirement	Product Contribution
Materials & Resources (MR)– Credit 4: Recycled Content (1-2 points) Credit 5: Regional Material (1-2 points)	Materials with recycled content such that the sum of post-consumer recycled content plus ½ of the pre-consumer content constitutes at least 10% (1 point) or 20% (2 points), based on cost, of the total value of the materials in the project. Materials/products extracted and manufactured (or fraction thereof) within 500 miles of project site for a minimum of 10% (1 point) or 20% (2 points), based on cost, of the total materials value (fractional quantities contribute as percentage by weight).	CONWED products contain varying levels of pre-consumer recycled content depending on the product. Contact 1-800-GET PINK™ for additional information. Recycled content certification by Scientific Certifications Systems: www.sccscertified.com . CONWED products are made in the Ladysmith, Wisconsin manufacturing plant to provide regionally available product manufactured and sourced within a 500 mile radius of project locations in some areas of the country. Check with local sales representative, and refer to Fig 1 on the next page to determine finish material place of origin.
Indoor Environmental Quality (IEQ)– Prerequisite 3: Minimum Acoustic Performance Credit 9: Enhanced Acoustical Performance (1 point)	Classrooms and core learning spaces with background noise from HVAC systems at 45 dBA or less, and have reverberation times per the ANSI Standard S12.60-2002, Acoustical Performance Criteria, Design Requirements and Guidelines for Schools. Apply ANSI Standard S12.60-2002, Acoustical Performance Criteria, Design Requirements and Guidelines for Schools for STC rating of building shell, classroom and core learning space partitions; HVAC background noise at 40 dBA; windows at least STC 35.	CONWED products are effective in reducing noise transfer from building system like the HVAC system thereby improving room sound quality. See individual product data sheets for details. CONWED products are effective in reducing noise transfer for operating systems and adjacent spaces, thus improving overall room sound quality. See individual product data sheets for details.
Innovation in Design (ID)– (1-4 points)	Credit can be achieved through any combination of the Innovation in Design and Exemplary Performance.	Refer to individual product data sheets or check with the local sales representative for product applications.

Note: No individual material enables a credit point to be taken within LEED because each category is dependent on the aggregate of all materials and their proportionate relationship to the total dollar cost of all materials.

Figure 1

CONWED Designscape® Acoustic Products Plant Locations



To view other products that help contribute to LEED certification please visit <http://sustainability.owenscorning.com/> and download Pub Number 10011611.

CDC CORPORATION
800 GUSTAFSON ROAD
LADYSMITH, WI 54848

Pub. No. 10011697. Printed in U.S.A. November 2009.

LEED® is a registered trademark of US Green Building Council. ©2009 Owens Corning.