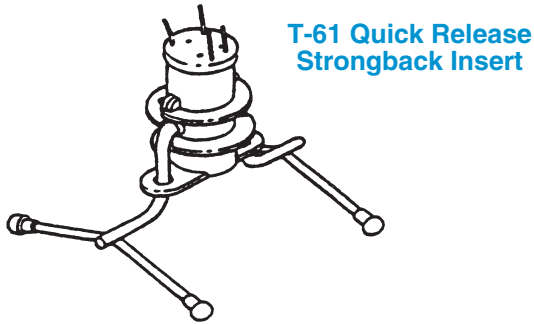


## T-61 Quick Release Strongback Insert



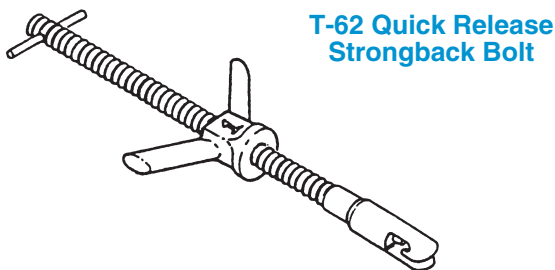
The T-61 Quick Release Strongback Insert is designed to provide access for the strongback hardware and adequate lifting capacity for the assigned project. The insert is furnished as an assembly, complete with locator cap and plastic tipped feet

**To Order:**  
Specify: (1) quantity, (2) name, (3) panel thickness.

**Example:**  
48, T-61 Strongback Inserts for 6" panel thickness.

Available exclusively through Certified Dayton Tilt-Up 3 Dealers.

## T-62 Quick Release Strongback Bolt



The Dayton Superior T-62 Quick Release Strongback Bolt is a simple coil threaded unit designed to quickly engage and tie strongback beams to a tilt-up concrete panel. The unit requires no tools for installation or removal and works well with steel, aluminum or wood strongbacks.

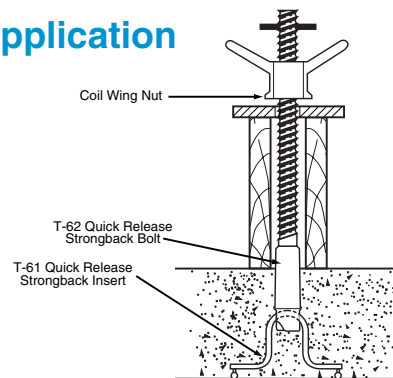
**To Order:**  
Specify: (1) quantity, (2) name.

**Example:**  
12, T-62 Quick Release Strongback Bolts.

Available exclusively through Certified Dayton Tilt-Up 3 Dealers.

## Typical Quick Release Strongback System Application

**Warning:** Strongbacks are intended to stiffen tilt-up panels and are not to be used for attaching the lifting apparatus. Failure to heed this warning may result in a panel failure and/or personal injury.

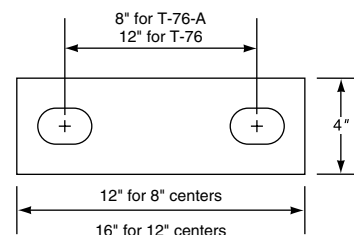


## T-76 Double Strongback Plate

Dayton Superior produces two strongback plates. The T-76 Strongback Plate has holes spaced at 12" centers and is used with double inserts. The T-76-A Strongback Plate is used with inserts spaced at 8" centers.

**To Order:**  
Specify: (1) quantity, (2) name.

**Example:**  
100, T-76 Strongback Plates



**T-76 Double Strongback Plate**