

***New Pollution Control Facilities***

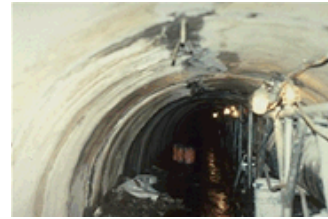


**Project:** **New Pollution Control Facilities** West Branch  
Interceptor Sewer Staten Island, New York

**Owner:** New York City Department of Environmental Protection

**Contractor:** Grow-Kiewit-Catapano, Joint Venture

**Deneef Representative:** Preservation & Protection Systems,  
Inc.  
Orange, New Jersey



\* Typical Grout & Pump Staging Area

***Problem***

This project consists of 7.5 ft., inside diameter precast tunnel composed of trapezoidal shaped segments that bolt together to form the circular sewer. The individual segments had a rubber gasket that was to form a waterproof seal. The seals did not work properly and the and the bolt cutouts developed cracks allowing an excessive amount of Water to enter the sewer. It was impossible to line the tunnel with concrete until the water was stopped.

***Solution***

Hydro Active Flex LV was supplied for a test area against other competitive resins. It's superior characteristics, including flexibility, handling, setup time and safety, made it the choice over our competitors.

Approximately 20 pallets of HA Flex LV was injected.

Initial water in-flow was estimated at 1,750 gal. per minute; current in-flow is approximately 5 gal. per minute.