

DEX-O-TEX®

Tek-Crete™ Tek-Crete™ Flooring Systems



- ◆ Food & Beverage
- ◆ Chemical Processing
- ◆ Pulp & Paper
- ◆ Pharmaceutical
- ◆ Animal Holding
- ◆ Cage Wash



Tek-Crete™ Flooring Systems Flooring Systems

The Uncompromising Floor for Uncompromising Environments

Tek-Crete technology is the best in its class of urethane flooring systems. **Tek-Crete** is protecting millions of square feet of concrete in the most abusive environments, including food processing and bottling, chemical processing, pharmaceutical ... Anywhere that requires superior:

- ◆ Thermal shock resistance
- ◆ High-temperature resistance
- ◆ Chemical resistance
- ◆ Impact resistance

Tek-Crete is the superior seamless alternative to acid brick, quarry tile and other mortar flooring surfaces commonly used in these environments.

Unlike acid brick and quarry tile, **Tek-Crete** does not crack at mortar joints. Cracking at mortar joints is an inherent problem with mortar and tile systems that are subject to thermal cycling. With **Tek-Crete** there is a noticeable absence of cracking. Acid bricks and quarry tile crack at the mortar joints due to the difference in the coefficient of thermal expansion of these dissimilar building materials.

Cracks and micro-cracks act as a hiding place for unwanted microorganisms. The environment is often moist and fills with organic materials – an ideal food source for colonies of microorganisms. Cracks also provide an avenue for chemical and water intrusion. Migration of water and aggressive chemicals attack the substrate and eventually may pollute the environment.

Tek-Crete is designed to be stress relieving during thermal expansion and contraction. This is a major long term advantage when crack resistance and dimensional stability are important.

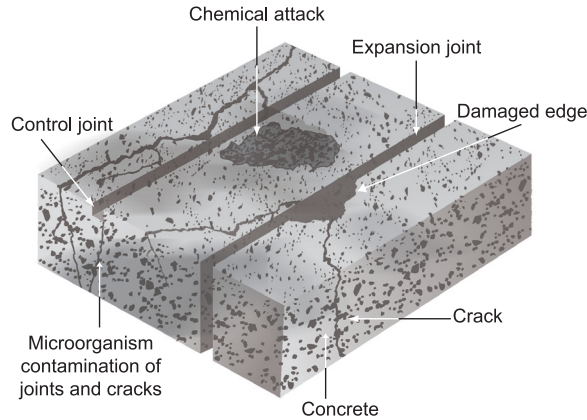


Tek-Crete offers unequalled resistance to impact and corrosion from the most aggressive chemical environments. When daily cleaning with live steam, pressure washing or industrial cleaners are required, **Tek-Crete's** performance is unmatched.

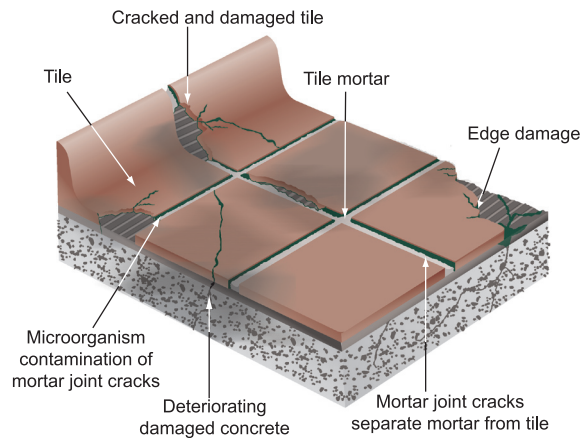
These unique systems are virtually odor-free during installation and cure, which means they can be installed during normal working hours. They are backed by a leading group of technical service experts with systems know-how second to none. For maximum chemical and impact protection, durability and cleanability, specify the most Uncompromising Floor in the construction industry ... specify **Tek-Crete**.

Advantages

- ◆ Heat Resistant
- ◆ Fast Curing
- ◆ Seamless
- ◆ Easy to Clean
- ◆ Chemical Resistant
- ◆ Long-Term Durability
- ◆ Maximum Wear Resistance
- ◆ Maintains Surface Integrity
- ◆ Used with Confidence in Sanitary Environments
- ◆ Regulatory Agency Approved
- ◆ Rapid Installation for Minimal Downtime
- ◆ Resists Thermal Induced Stresses that Lead to Delaminations & Cracking
- ◆ Moisture Tolerant
- ◆ Low Odor During Installation
- ◆ Enhanced Safety
- ◆ Skid Resistant

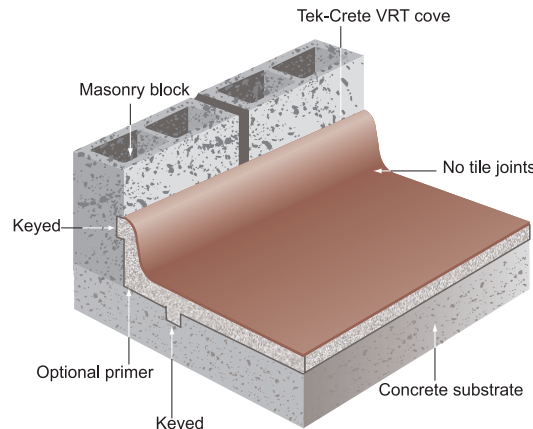


If your concrete looks like this, you already know you have problems. **Tek-Crete** is the solution! **Tek-Crete** is the ideal surfacing for new or distressed concrete. After proper surface preparation, the **Tek-Crete** is installed directly over the spalls and contraction/relief joints. The expansion and isolation joints are honored, which means they are left to move as designed.



If your quarry tile or acid brick looks like this, you know you have problems. If you look closely at the mortar joints, you will see separation, especially if you clean the surface with hot water or steam. The cracks are induced by the different coefficient of thermal expansion between the mortar and brick/tile. To avoid the problems with tile and other seamed systems, specify **Tek-Crete**, your best choice.

Tek-Crete is available in a wide variety of aesthetic finishes. The illustration provides the "Keys to Success™", including saw cuts at integral cove bases, terminations, transitions and penetrations, and choosing the right **Tek-Crete** system for your needs. Untopcoated systems are the quickest to install and offer the greatest breathability. Topcoated **Tek-Crete** systems create a decorative look with similar toughness and impact resistance; however, the topcoated systems may be less chemical or heat resistant, depending upon the technology chosen. Contact Crossfield Products Corp. whenever questions arise or additional clarification is needed.



Tek-Crete Topcoat options include standard epoxy, novolac epoxy or polyurethane/polyaspartic formulations. Reference Dex-O-Tex®'s **Tek-Crete** Selector Guide and associated product data sheets for additional information on appropriate product selections.

Tek-Crete system options include trowelable, screed applied and screed broadcast (solid aggregate, colored quartz aggregate and flake) formulations.

Optional primer recommended over substrates under high outgassing conditions.

Tek-Crete™

Engineered Alternative

Engineered Alternative

Minimal Down Time

Tek-Crete flooring systems cure rapidly, even under cool application conditions. This allows non-broadcast and non-topcoated flooring systems to return to full operation, usually within 12 hours.

Chemical Resistance

Tek-Crete's proprietary technology provides outstanding protection against chemical attack in a wide range of processing and end-use environments – from food processing and bottling to chemical processing and animal holding. **Tek-Crete** provides years of superior resistance performance from organic and inorganic acids and bases, solvents, animal waste and most repetitive impact environments.

High Impact Resistance

Unlike quarry tile and acid brick flooring, commonly known for unsightly and easily damaged mortar joints, **Tek-Crete** flooring systems absorb direct impact blows without edge spalling by distributing the loads uniformly throughout the system. And, since it is seamless it does not crack, chip or spall.

Thermal Shock Resistance

Tek-Crete flooring systems maintain their stress relieving elasticity over a wide temperature range. Unlike rigid technologies such as epoxy, vinyl ester, polyester and MMA systems, **Tek-Crete** won't delaminate due to thermally induced stresses.

Low Odor

Tek-Crete is virtually odor-free during installation and cure, making it possible to keep the workspace open during application.

Easy to Maintain

Tek-Crete's self-bonding formulation makes it easy to retrofit floor substrates that are in need of refurbishment or repair due to abuse.

Skid Resistance

Tek-Crete's surface profile can be adjusted to provide varying degrees of skid inhibition and ease of cleaning to meet each end-user's specific needs.

Cleaning

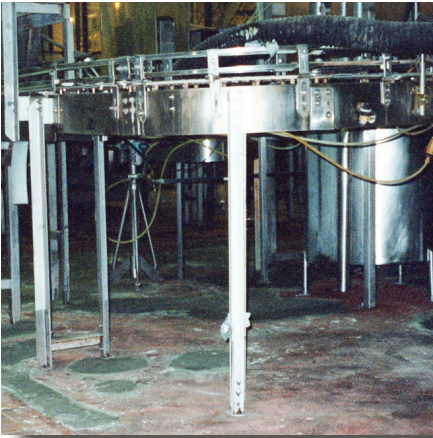
Tek-Crete flooring systems are ideal for severe cleaning techniques, including live steam, hot water, aggressive detergents and disinfectants. Unlike other flooring systems, it is stress relieving, thermal shock resistant, elevated temperature resistant and chemical resistant.

Tek-Crete systems are a hybrid polyurethane cementitious mortar chemistry that can be applied with various skid resistant finish textures. The more aggressive the textured profile the more difficult it is to clean. Smoother textures are less skid resistant but are easier to clean. When selecting a **Tek-Crete** system the surface profile specified for the environment must be considered. In many instances, **Tek-Crete's** unique formulation allows for hot water or steam cleaning, reducing the need to use caustic and other aggressive cleaning agents and making it more environmentally friendly.



Tek-Crete™ Systems Options

Systems Options



Tek-Crete TT Trowel Grade

- ◆ Quick installation requirements
- ◆ Application thicknesses of 1/4 inch (6.35mm) or more
- ◆ Areas subject to heavy industrial traffic
- ◆ Environments under constant chemical, thermal and mechanical attack
- ◆ Temperatures up to -50°F/-46°C to 300°F/149°C
- ◆ Areas where cleanliness and good hygiene are important
- ◆ Areas requiring hot water or live steam cleaning

Tek-Crete VRT Vertical Trowel Grade

- ◆ Minimum vertical/base application thickness of 3/16 inch (4.8mm) radius
- ◆ Vertical base applications
- ◆ Steep slopes

Tek-Crete Sealer

- ◆ Smooth finish coat
- ◆ Dex-O-Tex optional epoxy primer for substrates under high outgassing conditions

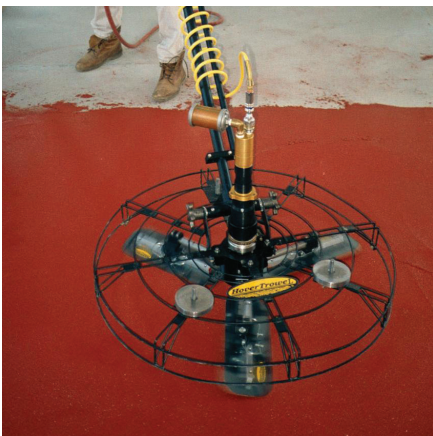


Tek-Crete SL Flowable Grade

- ◆ Quick installation requirements
- ◆ Application thicknesses of 3/16 to 1/4 inch (4.76 to 6.35mm)
- ◆ Areas subject medium to heavy industrial traffic
- ◆ Environments below -50°F/-46°C to 300°F/149°C
- ◆ Areas where surfaces must be smooth and easy to clean
- ◆ Areas requiring hot water or live steam cleaning

Tek-Crete SLCF Colored Flake System

- ◆ Application thicknesses of 1/4 inch (6.35mm) or more
- ◆ Environments requiring skid resistance even when wet
- ◆ Areas subject to wet processing
- ◆ Areas where aesthetics are important
- ◆ Areas subject to temperature ranges of -50°F/-46°C to 225°F/107.2°C
- ◆ Areas subject to chemical attack
- ◆ Areas where cleanliness and hygiene are important



Tek-Crete SL-F Flowable Grade

- ◆ Quick installation requirements
- ◆ Application thicknesses of 1/8 inch (3.18mm)
- ◆ Areas subject to light to medium industrial traffic
- ◆ Environments below -50°F/-46°C to 300°F/149°C
- ◆ Areas where surfaces must be smooth and easy to clean
- ◆ Areas requiring hot water or live steam cleaning

Tek-Crete SLB & SLCQ Broadcast Grades

- ◆ Application thicknesses of 1/4 inch (6.35mm) or more
- ◆ Environments requiring skid resistance even when wet
- ◆ Areas subject to wet processing
- ◆ Areas where aesthetics are important
- ◆ Areas subject to temperature ranges of -50°F/-46°C to 225°F/107.2°C
- ◆ Areas subject to chemical attack
- ◆ Areas where cleanliness and hygiene are important

Product Selector Guide

System Options

| | Tek-Crete TT | Tek-Crete SL | Tek-Crete SL-F | Tek-Crete SLB | Tek-Crete SLCQ | Tek-Crete SLCF |
|---------------------------|--------------|--------------|----------------|------------------------------------|-----------------------------------|----------------------------------|
| Description / Type | Trowel | Screed | Screed | Screed Broadcast (Solid Aggregate) | Screed Broadcast (Colored Quartz) | Screed Broadcast (Colored Flake) |
| Broadcast, Medium | | | | Aluminum Oxide or Quartz | Colored Quartz | Colored Flake |
| Top Coat Options | | | | | | |
| Tek-Crete Sealer | Optional | Optional | Optional | NA | NA | NA |
| Standard Epoxy | Optional | Optional | Optional | Good | Good | Good |
| Novolac Epoxy | Optional | Optional | Optional | Better | Better | Better |
| Polyurethane/Polyaspartic | Optional | Optional | Optional | Best | Best | Best |

Application Recommendations

| | Tek-Crete TT | Tek-Crete SL | Tek-Crete SL-F | Tek-Crete SLB | Tek-Crete SLCQ | Tek-Crete SLCF |
|---|--------------|--------------|----------------|------------------------------------|-----------------------------------|----------------------------------|
| Application Environments | Trowel | Screed | Screed | Screed Broadcast (Solid Aggregate) | Screed Broadcast (Colored Quartz) | Screed Broadcast (Colored Flake) |
| Animal Housing & Health | S | S | S | P | P | P |
| Battery Charging Areas | P | P | P | P | CC | CC |
| Beverage, Spirits & Distilleries | P | S | S | S | S | S |
| Cage Wash | P | P | P | S | CC | CC |
| Chemical Processing/Refineries | P | P | P | S | CC | CC |
| Containment Areas | P | S | S | P | CC | CC |
| Dairies, Milk Processing | P | P | P | P | CC | CC |
| Drum & Barrel Handling | P | S | CC | S | CC | CC |
| Food Processing | P | P | P | S | S | S |
| Freezers & Coolers | P | S | S | S | CC | CC |
| Kitchens — Commercial, Institutional & Industrial | S | P | P | P | P | P |
| Laboratories | S | S | S | P | P | P |
| Manufacturing, Light Duty | S | S | S | P | P | P |
| Manufacturing, Medium Duty | P | S | S | P | S | CC |
| Manufacturing, Heavy Duty | P | S | CC | S | CC | CC |
| Meat, Fish, Poultry Packing | P | P | P | P | CC | CC |
| Plating, Pickling & Etching | P | S | CC | S | CC | CC |
| Printing (Inks & Dyes) | P | P | P | S | CC | CC |
| Pulp & Paper Processing | P | P | S | P | CC | CC |
| Waste Handling & Transfer | P | P | S | P | CC | CC |
| Wineries | P | S | S | S | S | S |

Reference Key P - Primary Recommendation, S - Secondary Recommendation, CC - Consult Crossfield

Factory Trained Installers

The most advanced network of Factory Trained Installers who specialize in the installation of **Tek-Crete** systems are on your side. This international group of installers, in conjunction with professional architects and engineers, ensure that **Tek-Crete** systems are specified and installed right the first time.

These installation experts are committed to quality and owner satisfaction. For further systems and application information, contact your local Crossfield Products Corp. representative today.

West Coast
3000 Harcourt Street
Rancho Dominguez, CA 90221
Tel: 310.886.9100
Fax: 310.886.9119

Crossfield Products Corp.
www.dexotex.com

East Coast
140 Valley Road
Roselle Park, NJ 07204
Tel: 908.245.2800
Fax: 908.245.0659

© Crossfield Products Corp. 2009
File Code L-700 REV 03/12