

# DEX-O-TEX<sup>®</sup>

## Waterproof Membranes, Decks & Floors



- Secondary Containment
- Pool Decks
- Parking Decks
- Walking Decks
- Roof Decks

- Concrete Restoration
- Elastomeric Membranes
- Under Tile Membranes
- Moisture Emission Control
- Mechanical Room Floors

# DEX-O-TEX<sup>®</sup> Product Line

The Dex-O-Tex Product Line, of Crossfield Products Corp., is the world leader in specialty polymeric and cementitious systems for waterproofing, restoration & protection. Since 1938, Crossfield Products has manufactured a vast array of systems for commercial, institutional, and industrial facilities.

## Waterproof Decking

### Weatherwear<sup>™</sup>

#### GENERAL DESCRIPTION

For multi-layered waterproofing roof and deck surfacing material designed for foot traffic and roof furniture.

#### TYPICAL USES

Promenade decks and roofs, balconies, sun decks, play decks, mezzanines and roofs over occupied space..

#### FEATURES

Material is applied in a series of trowel coats: latex membrane with integral composite flashings, and a flexible cementitious traffic surfacing. A proprietary "slip-sheet" designed to separate the Weatherwear membrane system from the substrate which permits it to float over nominal cracks subjected to building movement. The total thickness of the material is 3/16 inch to 1/4 inch and can be applied over plywood, concrete and other existing surfaces. Weatherwear is ICC Listed, with a one-hour fire rating over plywood..



### Elastatex<sup>™</sup> 500 SF

#### GENERAL DESCRIPTION

A fluid-applied, solvent-free elastomeric surfacing material designed for use as a waterproofing system for balconies and pedestrian traffic.

#### TYPICAL USES

Promenade decks, sun decks, roof deck tennis courts, balconies and as a protective covering when renovating elevated concrete walkways, decks and pool decks.

#### FEATURES

Elastatex 500 SF consists of proprietary, solvent-free, moisture cured polyurethane system that is combined with rubber aggregates during the application to form a tough, elastic waterproofing membrane and wearing surface. A topcoat is available in a wide range of colors. The material is "turned up" against building walls and parapets to form an integral waterproof membrane. Surfaces over which Dex-O-Tex Elastatex 500 SF may be installed include plywood and concrete.



### Auto-Dex<sup>™</sup> 500

#### GENERAL DESCRIPTION

A multi-layered, fluid-applied, solvent-free elastomeric waterproofing membrane combined with a tough wearing surface. Specially formulated to protect concrete parking decks from the deleterious effects of water, waterborne chlorides, automotive chemicals, and vehicular traffic.

#### TYPICAL USES

Concrete parking deck surfaces, helicopter pads, high traffic pedestrian areas such as balconies and promenade decks and elevated walkways.

#### FEATURES

Auto-Dex 500 SF provides skid resistance in the wearing surface. This solvent-free system is environmentally friendly and designed for use under direct exposure to light to heavy vehicular traffic. Finished thicknesses vary depending upon the intended end use and environmental conditions. It is ICC Listed.



- Waterproof decking for walking decks, balconies & plazas
- Waterproof decking for parking decks
- Waterproof membranes & wearing surfaces for wet spaces, such as mechanical equipment rooms & showers
- Membranes to protect surfaces from water or chemical intrusion

For additional information on Dex-O-Tex's complete line of Flooring & Protective Coating System products, see

BuyLine 3020

Section 09 67 00/CRO

Dex-O-Tex systems are engineered to provide the best solution for your demanding project requirements. For easy access to our complete library of downloadable Dex-O-Tex product specifications, visit us at

[www.dexotex.com](http://www.dexotex.com)

Factory Trained Professional Applicators are available to survey & quote your next project. Contact us toll free at **800.692.3502** to find a local applicator near you today!

# Problems Solutions Results...

## The **DEX-O-TEX**® Way

### **Waterproof Flooring Systems**

#### **M-E Flooring**

##### **GENERAL DESCRIPTION**

A multi-layered, fluid-applied latex membrane system that can be reinforced with polypropylene fabric for use in mechanical equipment rooms.

##### **TYPICAL USES**

Mechanical equipment rooms, air conditioning rooms, plenums and similar spaces subjected to inadvertent water or other fluid spillage, especially over occupied spaces.



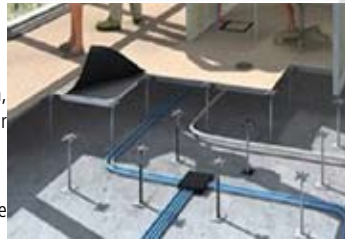
#### **Access Flooring**

##### **GENERAL DESCRIPTION**

A multi-layered application consisting of neoprene-composition, elastomeric waterproof membrane topped with a cementitious wear course.

##### **TYPICAL USES**

Combines waterproofing membrane and protective wear course beneath elevated access flooring systems.



### **Concrete Protection**

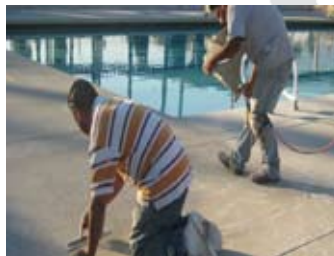
#### **Resistite™ Protective Coating**

##### **GENERAL DESCRIPTION**

A latex modified cementitious decorative and protective system designed for exterior use to produce an abrasion-resistant, water-repellant concrete coating.

##### **TYPICAL USES**

Concrete balconies, pool decks, sidewalks, concrete walls, skid-resistant floor and deck applications and as a resurfacing and restoration coating for concrete and masonry surfaces.



#### **Resistite™ Micro-Topping**

##### **GENERAL DESCRIPTION**

A multi-use latex modified cementitious decorative and protective coating system designed for indoor application over a broad range of surfaces (e.g., concrete, brick, metal, masonry, plywood, etc.) to create a decorative, "concrete-like" appearance with "concrete-like" performance.

##### **TYPICAL USES**

Patios, pool decks, driveways, balconies, walking decks, retail applications, restaurants, night clubs, show rooms, etc.



### **Waterproofing Membranes**

#### **Barrier-Guard™**

##### **GENERAL DESCRIPTION**

A fluid-applied, polymer emulsion waterproofing membrane that provides excellent adhesion and resistance to impact. Manufactured in compliance with ANSI. 10-99.

##### **TYPICAL USES**

Used as a membrane under seamless decks, floors, tiles, marble, etc. Can be used in mechanical equipment rooms, below computer access floors, and as a between-slab waterproofer.

#### **Cheminert™ SC Membrane**

##### **GENERAL DESCRIPTION**

A flexible epoxy/polyurethane composite membrane that provides waterproofing and crack dampening isolation.

##### **TYPICAL USES**

Hospitals, commercial kitchens, shopping malls, industrial plants, bio-medical facilities, animal housing, mechanical equipment rooms, etc. where protection over occupied space and protection of the environment are of concern.

### **Moisture Mitigation Primers & Flooring Systems**

Dex-O-Tex offers the widest variety of negative side moisture mitigation systems available in the marketplace. These include:

- VaporControl™ Primer 100
- VaporControl™ Primer 200

For additional information and a complete overview of Dex-O-Tex's moisture emission control, see

**BuyLine 0060**

**Section 07 18 00/CRO**

#### **VAPORCONTROL PRIMER 100 & 200**

These systems are used under most of Dex-O-Tex's or other third party non-breathing flooring systems as a moisture mitigating primer. VaporControl 100 carries a 10-year warranty providing protection from vapor pressure up to 15 lbs as tested in accordance with ASTM F1869. VaporControl Primer 200 provides protection from vapor pressure up to 8 lbs as tested in accordance with ASTM F1869.

#### **DUAL-FLEX**

Dex-O-Tex Dual-Flex is a multi-layer, elastomeric waterproof system for uses under tile, brick, stone or pavers that incorporates two separate layers of waterproof protection. The system is engineered to provide maximum waterproofing protection over occupied space. Dual-Flex is composed of a high strength polyurethane waterproof membrane basecoat; a high-strength, flexible trowel grade, polymer reinforced, cementitious underlayment; a secondary multi-layer, fabric reinforced, polymer modified elastomeric membrane; and a cementitious co-polymer protection coat. Dual-Flex incorporates an integral flashing for drains, vertical surfaces and threshold.



# DEX-O-TEX®

## Scientifically Superior™ Technologies

*for Discriminating Facility Owners, Design Professionals & Contractors*

Crossfield Products Corp. manufactures a vast array of polymer & cementitious systems for commercial, institutional & industrial facilities. Dex-O-Tex Systems are ideal for both new construction & renovation projects. No matter how demanding your environment, Dex-O-Tex Systems can be engineered to provide the right protective solution. Visit our web site at [www.dexotex.com](http://www.dexotex.com) to obtain easily downloadable support information.

Membranes are seldom used as a stand-alone system. They are normally used for waterproofing, fluid-proofing, crack isolation, equipment vibration dampening or as a moisture mitigation system, or used over occupied space where water & fluid proofing are desired. The membranes are used in conjunction with protective wearing surfaces.

### Decks/Roofs

- Parking Structures
- Balconies
- Roof Decks
- Promenade Decks
- Mezzanines
- Elevated Walkways
- Between Slabs
- Under Tile & Masonry Surfaces

### Floors

- Correctional Facilities, Multi-Level
- Mechanical Equipment Room Floors
- Shower Rooms
- Shower Pans
- Restrooms
- Locker Rooms
- Kitchens
- Animal Holding & Housing
- Cage & Dish Wash Areas
- Hospital & Healthcare Facilities
- Computer Access

### Thermal & Moisture Protection Products

- Auto-Dex 500 SF
- Barrier-Guard Membrane
- Elastatex 500 SF
- M-E Flooring
- Access Flooring
- Weatherwear
- Cheminert SC Membrane

# [www.dexotex.com](http://www.dexotex.com)

#### West Coast

3000 Harcourt Street  
Rancho Dominguez, CA 90221  
Tel: (310) 886-9100  
Fax: (310) 886-9119

**Crossfield Products Corp.**  
**800.692.3502**

#### East Coast

140 Valley Road  
Roselle Park, NJ 07204  
Tel: (908) 245-2800  
Fax: (908) 245-0659