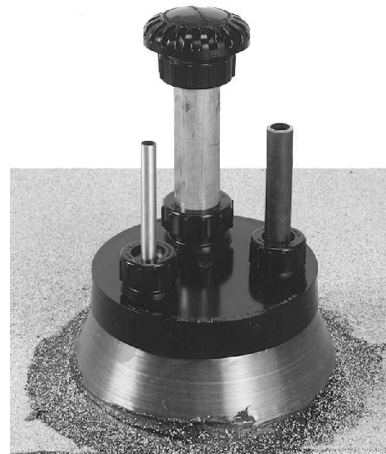


**#910/915 Future/Multi-Flash**

910



915

Photos May Show Some Available Options

**910 FUTURE FLASH**

Commercial and industrial buildings are often designed with provisions for future mounted equipment. The installation of Future Flash assemblies during original construction allows for the future installation of multiple service lines, avoiding the problems inherent in cutting through finished roofs and installing makeshift flashings.

**Future Flash** assemblies are recommended for flashing multiple future roof penetrations ranging in size from 1/8" OD to 6" SPS. Seamless lead flashings provide for a simple watertight installation using sheet lead complying with ASTM B-29 and Federal Specification QQL-20F, Grade C. Counterflashing cap is of UV resistant PVC.

**GUIDE SPECIFICATION:** Provide Elmdor/Stoneman #910 lead flashing with Future Flash counterflashing cap. Flashing shall be 4 lbs. seamless lead with 6" skirt and steel reinforced boot. Provide 915 Multi-Flash adapters to be sized to fit tubing, conduit and pipe penetrations. All flashings shall be installed in accordance with manufacturer's recommendations and flashed in accordance with the recommendations of the roofing material manufacturer.

**915 MULTI-FLASH**

**Multi-Flash Adapters** allow for installation of roof penetrations through a Future-Flash counterflashing cap. Adapters are UV resistant PVC compression type fittings ranging in size from 1/8" OD to 6" SPS. Multi-Flash Adapters are affixed to the PVC counterflashing cap after both are primed with PVC primer and then glued with PVC glue for on-the-job versatility. To order simply specify sizes of pipe, tube or conduit and quantity required.

Note: The 910 Future Flash counterflashing cap will accommodate the following combinations of 915 Multi-Flash Adapters:

- *One adapter:* Up to (1) 6" SPS Size
- *Two adapters:* Up to (1) 4" SPS Size and (1) 1-1/2" SPS Size
- *Three adapters:* Up to (1) 4" SPS Size and (2) 1" SPS Size
- *Four adapters:* Up to (2) 2" SPS Size and (2) 1-1/2" SPS Size

**910/915**

Revised: 3/30/05

**BASE MODEL #**

- ☐ 910 Future Flash with Seamless Lead Flashing and Counterflashing Cap
- ☐ 915 Multi-Flash Adapters

**NOMINAL SIZE (Roof Penetration)  
for 915 Series Must Specify**

- |                                 |                                 |                                 |                                 |
|---------------------------------|---------------------------------|---------------------------------|---------------------------------|
| <input type="checkbox"/> 1/8"   | <input type="checkbox"/> 3/16"  | <input type="checkbox"/> 1/4"   | <input type="checkbox"/> 5/16"  |
| <input type="checkbox"/> 3/8"   | <input type="checkbox"/> 1/2"   | <input type="checkbox"/> 5/8"   | <input type="checkbox"/> 3/4"   |
| <input type="checkbox"/> 7/8"   | <input type="checkbox"/> 1"     | <input type="checkbox"/> 1-1/8" | <input type="checkbox"/> 1-1/4" |
| <input type="checkbox"/> 1-3/8" | <input type="checkbox"/> 1-1/2" | <input type="checkbox"/> 1-5/8" |                                 |
| <input type="checkbox"/> 2"     | <input type="checkbox"/> 2-1/8" |                                 |                                 |

**MATERIAL TYPE for 915 Series Must Specify**

- ☐ EIMC Electrical Intermediate Metal Conduit
- ☐ EMT Electrical Metallic Tubing
- ☐ NHCI No-Hub Cast Iron pipe
- ☐ NCT Nominal Copper Tubing Applies to types K, L, and M and DWV copper tubing
- ☐ RCT Refrigeration Copper Tubing uses O.D. dimensions
- ☐ SPS Standard Pipe Size applies to Schedule 5 thru 160 steel pipe and electrical rigid conduit; Schedule 40 & 80 ABS & PVC plastic pipe and non-metallic electrical conduit

- ☐ SWCI Service Weight Cast Iron Hub and Spigot Pipe
- ☐ XHCI Extra Heavy Cast Iron Hub and Spigot Pipe

**OPTIONS for 910 Series**

- ☐ -6LB 6 Pound Seamless Lead Flashing
- ☐ -8SK 8" Lead Flashing Skirt
- ☐ -10SK 10" Lead Flashing Skirt

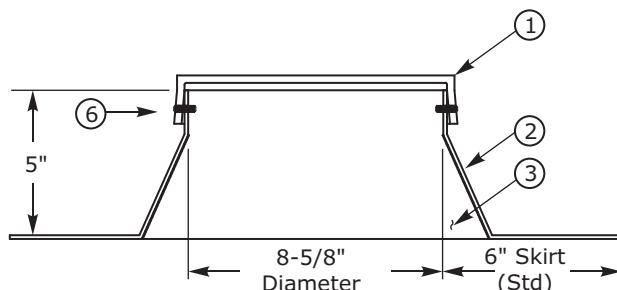
**OPTIONS**

- ☐ -VHF Vandal Flash Hood  
(Requires Size & Material)  
Available on 1-1/4" NCT thru 6" SPS

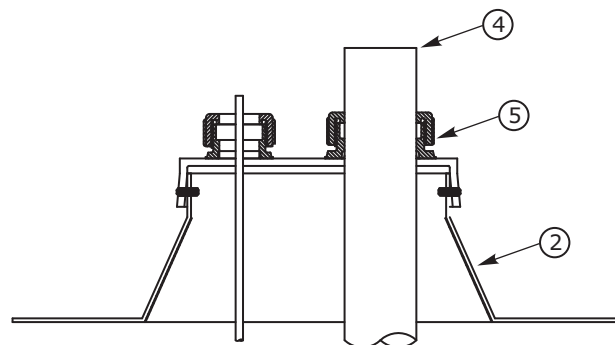
**NOTE:**

Model #910 Counterflashing cap will accommodate the following combinations of 915 Multi-Flash Adapters.

- One Adapter-up to 6" SPS (Standard Pipe Size)
- Two Adapters-up to (1) 4" SPS and (1) 1-1/2" SPS (Standard Pipe Size)
- Three Adapters-up to (1) 4" SPS and (1) 1" SPS (Standard Pipe Size)
- Four Adapters-up to (2) 2" SPS and (2) 1-1/2" SPS (Standard Pipe Size)

**910 Future Flash**

**NOTES:**

1. Counterflashing Cap.
2. Seamless 4 lbs. Lead Flashing.
3. Galvanized Steel Reinforcing Boot.

**915 Multi-Flash Adapters**


4. Roof Penetration Ranging in Size From 1/8" O.D. to 6" SPS.
5. Multi-Flash Adapter.
6. GE Type II Silicone Caulk or Equal (by Others).

Dimensions are subject to manufacturer's tolerance of plus or minus 1/4". Elmdor/Stoneman assumes no responsibility for use of void or suspended data. Please visit [www.elmdorstoneman.com](http://www.elmdorstoneman.com) for most current specifications. © Copyright 2005 Elmdor/Stoneman, City of Industry, CA, A Division of Acorn Engineering Company.

**SELECTION SUMMARY & APPROVAL FOR MANUFACTURING**

Model Number & Options	Quantity
Company	Date
Contact	Title
Approval for Manufacturing/Signature	

**910/915**

Revised: 3/30/05