

SLA Series

Slammer Access Doors

Doors are designed to provide security access with the strength and durability to withstand abusive and vandal-prone conditions prevalent in many institutions. Without sacrificing security, these doors allow maintenance personnel access to plumbing chases, shut-off valves and electrical apparatus located behind finished walls.

Door is fabricated from 10 gage steel.

Frame is 3/16" x 2" x 2" angle steel, welded and with pre-punched mounting holes.

Latch is a detention type dead bolt lock with paracentric key.

Door is provided with a high security, vandal resistant, detention type lock. Doors can be manufactured with locks provided by others.

Hinges are heavy duty and are welded to the door and frame.

Finish is a prime coat suitable for painting.

Guide Specification

Provide Elmdor® SLA Series, Slammer Access Doors (specify model number and options). Access Door shall be fabricated from 10 gage steel, and frame from 3/16" x 2" x 2" angle steel, welded and with pre-punched mounting holes. Door shall have a vandal resistant lock and heavy duty hinges welded to the door and frame. Finish shall be a prime coat suitable for painting.

MODEL NUMBER AND OPTIONS SELECTION
BASE MODEL NUMBER
☐ SLA Slammer Access Door

Suffix Options

☐ -LD Lock Provided by Others
☐ -MAS Masonry Anchor Straps
☐ -MLP Mortise Cylinder Lock (Prep)

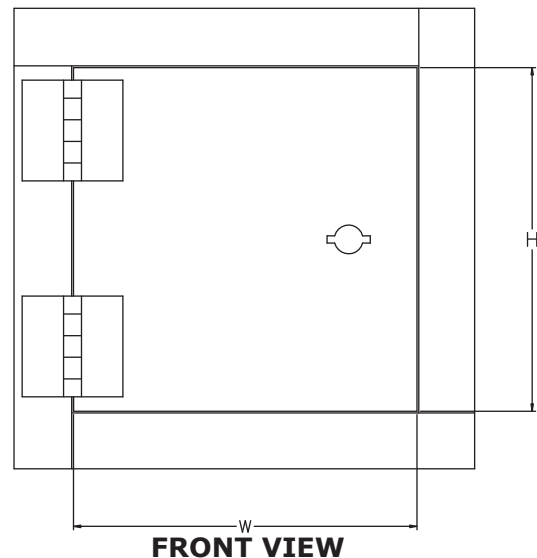
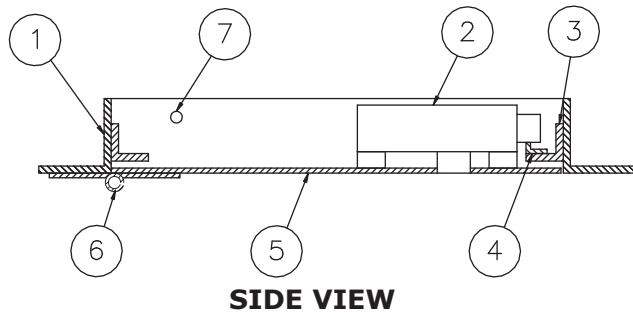
STANDARD AVAILABLE SIZES

Special sizes available upon request.

NOMINAL DOOR SIZE (W X H)	WALL OPENING (minimum required)	WEIGHT
SLA 12" x 12"	12-1/2" x 12-1/2"	29 lbs.
SLA 16" x 16"	16-1/2" x 16-1/2"	37 lbs.
SLA 18" x 18"	18-1/2" x 18-1/2"	42 lbs.
SLA 24" x 24"	24-1/2" x 24-1/2"	59 lbs.
SLA 24" x 36"	24-1/2" x 36-1/2"	78.5 lbs.
SLA 24" x 48"	24-1/2" x 48-1/2"	96 lbs.
SLA 36" x 36"	36-1/2" x 36-1/2"	102 lbs.
SLA 36" x 48"	36-1/2" x 48-1/2"	126 lbs.

NOTES:

1. FRAME
2. HEAVY DUTY LOCK
3. DOOR STOP
4. LOCK KEEPER
5. DOOR
6. HEAVY DUTY HINGE
7. MOUNTING HOLES



Dimensions are subject to manufacturer's tolerance of plus or minus 1/4". Elmdor/Stoneman assumes no responsibility for use of void or suspended data. Please visit www.elmdorstoneman.com for most current specifications. © Copyright 2005 Elmdor/Stoneman, City of Industry, CA, A Division of Acorn Engineering Company.

SELECTION SUMMARY & APPROVAL FOR MANUFACTURING

Model Number & Options _____ Quantity _____
 Company _____ Date _____
 Contact _____ Title _____
 Approval for Manufacturing/Signature _____

SLA

Revised: 3/1/02