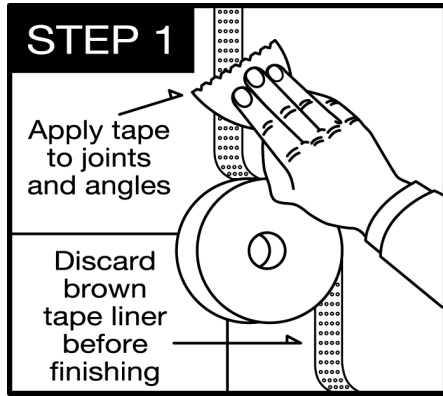


## E-Z Taping System DRYWALL FINISHING TAPE

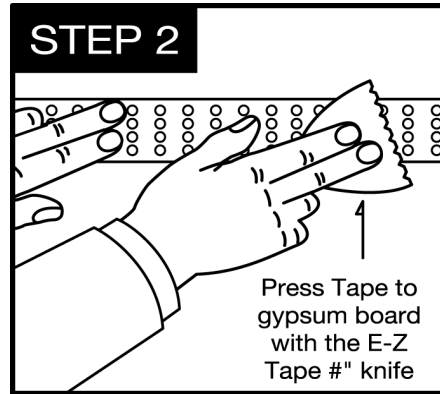
### Application Instructions

Prepare gypsum board by insuring all joints are tight and bevel or "V" cut butt joints. Wipe excessive dust from the gypsum board.

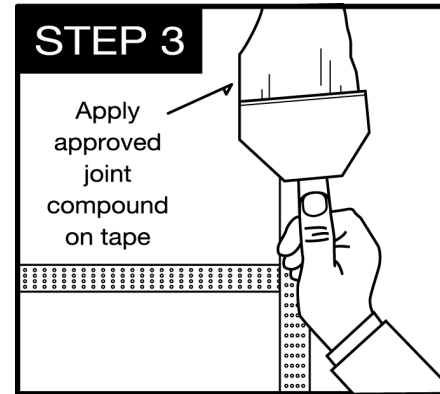


**Step 1** Apply FINISHING tape to all joints and angles of clean and dry gypsum board. Be sure the pressure sensitive adhesive, on the white paper tape, contacts the gypsum board at all times. Remove and discard the brown tape protective liner. The brown tape protective liner should be facing you during the application of the tape.

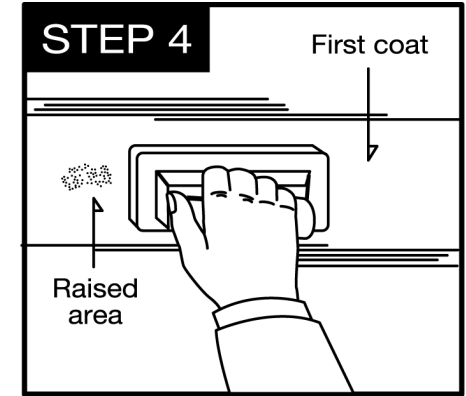
**Step 2** Apply sufficient pressure to the white tape with the E-Z Tape 3" plastic knife to aggressively adhere the tape to the gypsum board. When doing inside corners, fold the FINISHING TAPE where



it is creased in the center. Apply one of the folded edges to one side of the corner. Once it is placed properly, repeat the same thing for the remaining edge. Press on the tape to obtain proper adhesion after the paper is in place. Use the heel of a drywall knife or similar tool to press the FINISHING TAPE tightly into the seam of the gypsum board. Allow the FINISHING TAPE to bond to the gypsum board for 30 minutes before applying joint compound. The FINISHING TAPE bond will literally tear the paper from the gypsum board if you try and remove it when the bond is sufficient.



**Step 3** Apply sufficient joint compound to fully cover the tape using a 6" drywall knife for the first coat. For best results, use with a "Quick setting" or chemical hardening powdered joint compound, such as Sheetrock Easy-Sand (90 min) or the equivalent. If using a pre-mixed paste joint compound, an All-Purpose joint compound such as USG All Purpose (green label) or the equivalent, may be used. **DO NOT USE any LIGHTWEIGHT or SEMI-LIGHTWEIGHT pre-mixed paste joint compounds for the first coat.**



**Step 4** Allow joint compound to dry. When the joint compound is dry, remove any imperfections with a knife or sand paper. Perform normal sanding and touch-up procedures as necessary.

#### **Step 5 Second Coat**

Repeat steps 3 and 4 as required for proper finishing. Lightweight compounds are acceptable only for additional finishing coats. Apply second coat with a 12-inch knife.

**An instructional video for the Finishing Tape can be seen at our web site, which is [www.eztapingsystem.com](http://www.eztapingsystem.com)**

#### **ADDITIONAL REQUIREMENTS FOR USING FINISHING TAPE**

1. FINISHING Tape, gypsum board, and air temperature must be at or above 55 degrees Fahrenheit to achieve proper adhesion. FINISHING Tape must be maintained at or above 55 degrees Fahrenheit prior to and during application.
2. Use only approved joint compounds as described in Step 3 above. Using a non-approved joint compound might cause cracking or bubbling of the joint compound.
3. Gypsum board must be dry and free of excessive dust before applying FINISHING Tape.
4. FINISHING Tape may be used over metal outside corners to help reduce corner bead cracking.
5. FINISHING Tape should be used only for interior walls and ceiling surfaces that are to be finished with paint, wallpaper, or other wall covering.
6. Pre-fill butt joints, using a "Quick Setting" or chemically hardening powdered joint compound to mud the gap. Place the E-Z Tape firmly over the **wet compound** and wipe down. Taping over dry joint compound is **not recommended**.
7. If some bubbles should appear when the first coat is drying, sand lightly when compound is dry to remove. An alternate is to take a sharp knife and slit the bubble. Joint compound can then be forced into the slit during the second coat.

U.S. Patent No. 5.711.124. 5.891.282; 6.226.946; Foreign Patents Pending. Made in USA  
E-Z Taping System, Inc.; P.O. Box 11263; Green Bay, WI 54303 800-721-8273

Revised Jan. 2006

**E-Z Taping System is a registered trademark and FINISHING is a trademark of E-Z Taping System, Inc.**