

METAL FINISHES

COLUMN COVERS SURFACES + FINISHES



The following is a representative grouping of architectural metals and finishes selected to inspire the design process. We have the capabilities, however, of supplying virtually any type, style or finish to meet all the aesthetic and performance requirements of your project.

Whether your requirements call for one of our standard finishes, or a custom style, finish or texture, you can rely on Fry Reglet experienced personnel to be your single source of responsibility; working with you through material selection, the design stage, the development of details, the manufacturing process, shipment and delivery.

Finishes shown at 50% scale.

Note: Every effort has been made to represent the finishes as accurately as possible. It is recommended that an actual swatch be reviewed before placing an order.

FINISHES



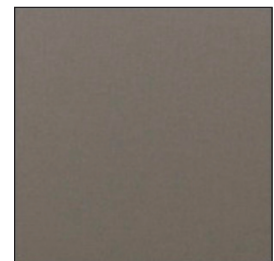
Clear Anodized Aluminum



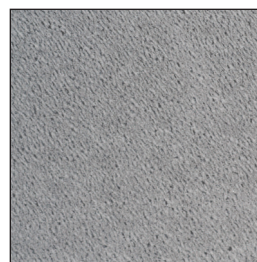
Stainless Steel #4



Stainless Steel #8



Paintlock



Galvanized

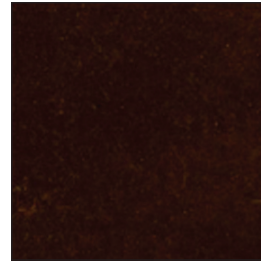
STANDARD COLORS



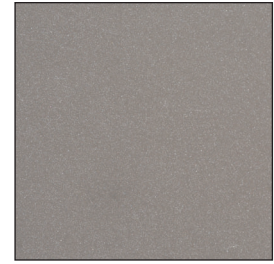
Black



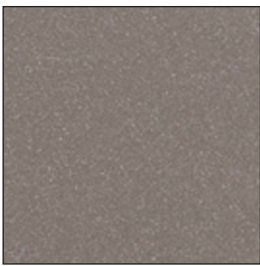
Dark Bronze



Medium Bronze



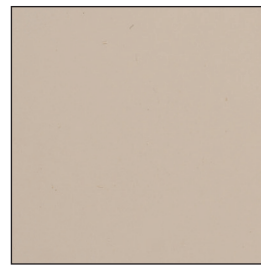
Gunmetal Grey



Silver Grey



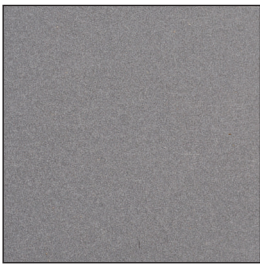
Silver Satin



Haze



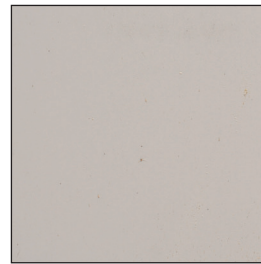
Platinum



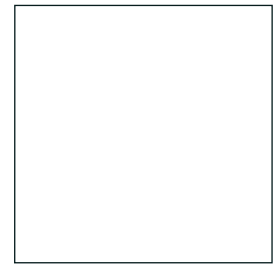
Anodized Silver



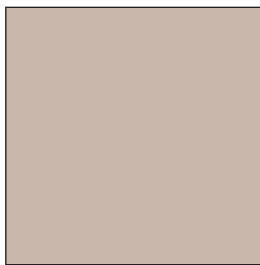
Cream



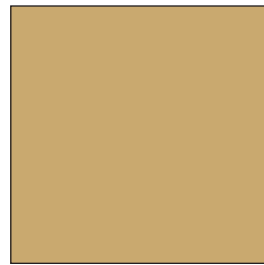
Oyster



White



Adobe

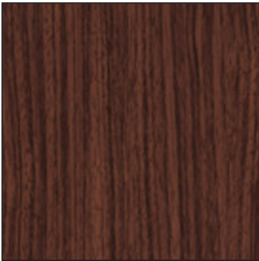


Tan

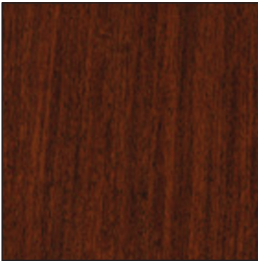


Champagne Gold

WOOD



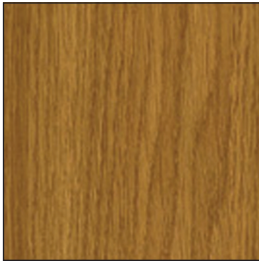
SW-85



SW-17

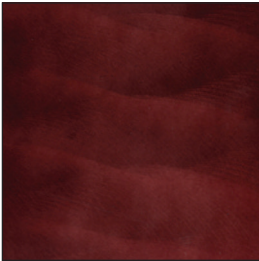


SW-43



SW-55

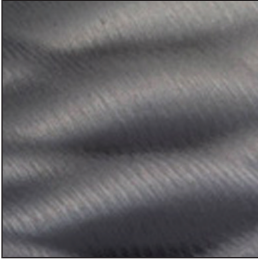
TINTS



Cola

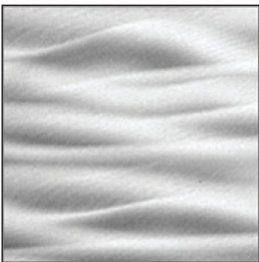


Electric Red

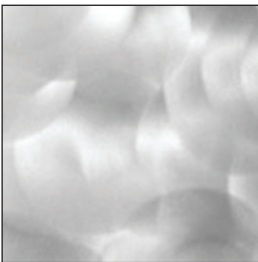


Smoke

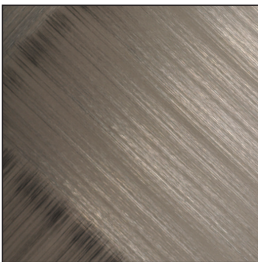
TEXTURAL PATTERNS



Currents



Clouds



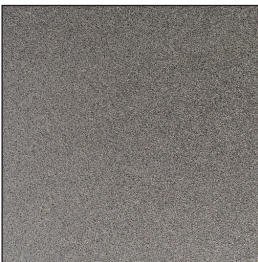
Basketweave



Angel Hair



Fog



Sandtex

MIRRORS



Black Mirror

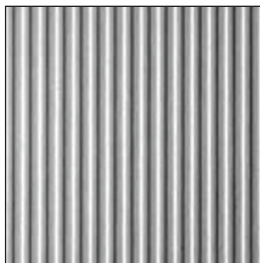


Blue Mirror

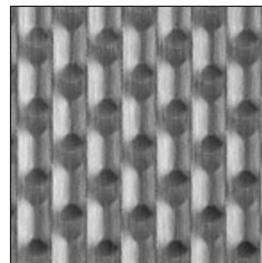


Mirror

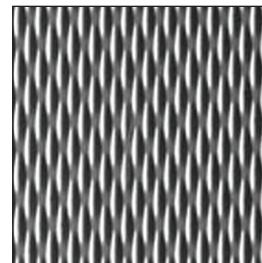
DIMENSIONAL PATTERNS



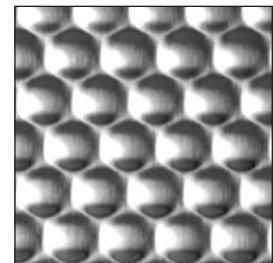
Cambridge



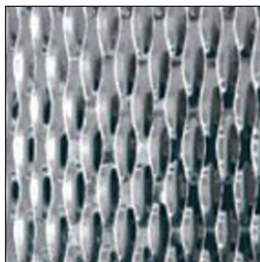
4-LB



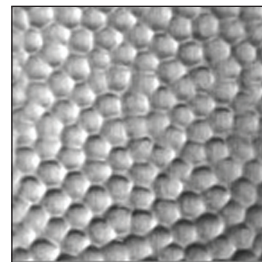
5-WL



Oxford



5-SM



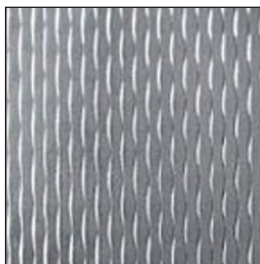
1-HM



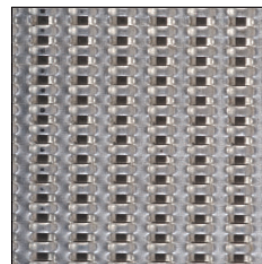
Linen



Leathergrain



2-WL

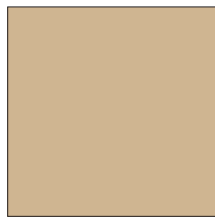


Wicker Metallic

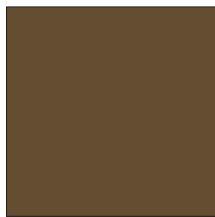
ENAMEL

Fry Reglet Enamel, applied over chemical conversion coating and primer, provides durability and beauty for most interior and exterior applications. This finish is provided as the standard Fry Reglet paint finish.

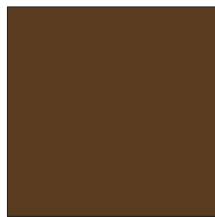
This factory applied, baked-on finish is available at standard lead times in the colors shown and in custom colors to match swatches provided.



TAN



MEDIUM BRONZE



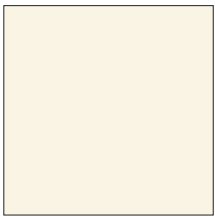
DARK BRONZE



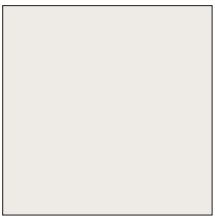
WHITE



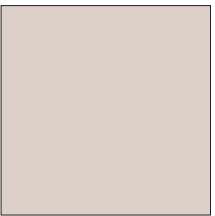
BLACK



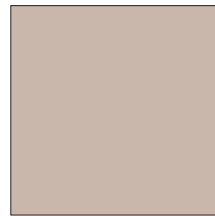
CREAM



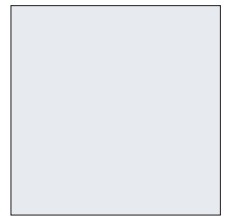
OYSTER



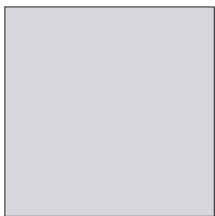
HAZE



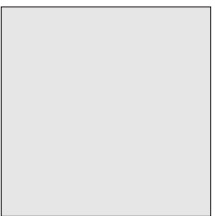
ADOBE



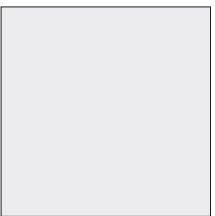
SILVER SATIN



SILVER GRAY



PLATINUM



GUN METAL GRAY

SPECIFICATION

ENAMEL SHALL BE AS FOLLOWS:

All surfaces to receive enamel shall be pre-treated and primed in strict accordance with paint manufacturer's instructions.

Finish shall meet or exceed AAMA 605.2 specification "Voluntary Specification for High Performance Organic Coatings of Architectural Extrusions and Panels." Nominal dry film thickness shall be .30 mil for primer and 1.0 mil for finish coat(s).

KYNAR® PREMIUM FINISH

The industry standard for over 25 years, Fry Reglet Kynar® coatings provide superior resistance to chalking and ultraviolet deterioration. Kynar® finishes are highly resistant to chemicals, salt spray and industrial pollutants. This premium finish is recommended for moldings to be used on exteriors in harsh environments or in coastal areas where salt air is common. Available in the two standard colors shown below or, on special order, in custom colors.



WHITE



BLACK

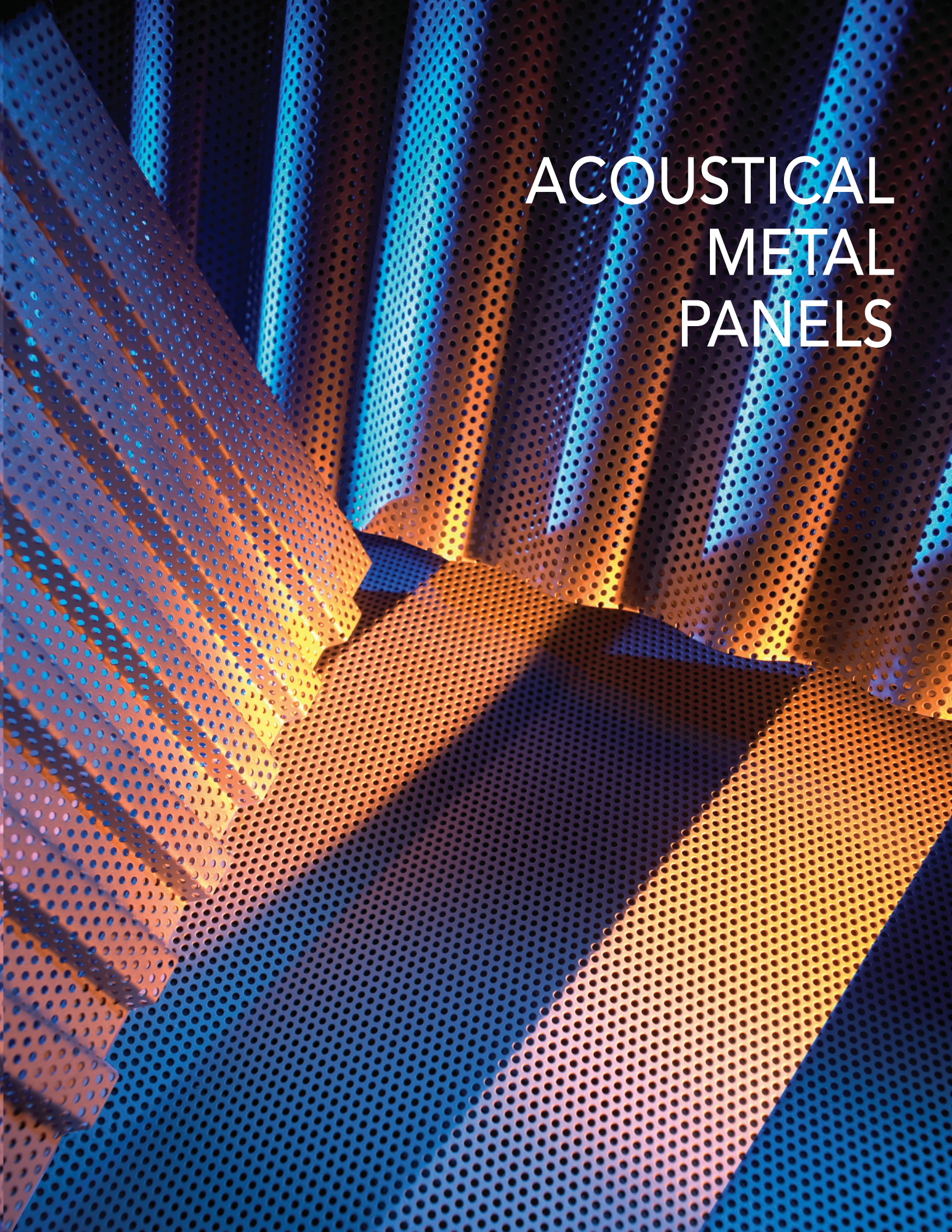
SPECIFICATION

KYNAR® FINISH SHALL BE AS FOLLOWS:

Finish shall meet or exceed AAMA 605.2 Specification "Voluntary Specification for High Performance Organic Coatings on Architectural Extrusion Panels." Nominal dry film thickness shall be .30 mil for primer and 1.0 mil for finish coat(s).

Finish shall be 70% min. resin content (full strength) polyvinylidene fluoride coating, applied over chemical conversion coating and primer. Coatings shall receive a bake cycle of 17 minutes at 450°F. Kynar is available by special order only. Contact Fry Reglet for color information.

Kynar® is a registered trademark of the Pennwalt Corporation.



ACOUSTICAL METAL PANELS