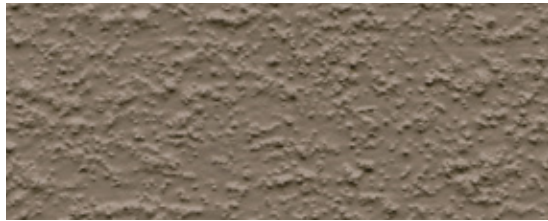


**GACOGRIP TEXTURE GRANULES  
PROVIDE A SLIP-RESISTANT FINISH**

(SIMULATED PRODUCT SAMPLE SHOWN IN ADOBE)



OYSTER



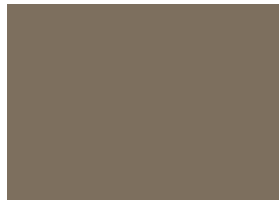
DESERT



PEWTER



SHALE



ADOBE



SEDONA

(COLORS MAY VARY SLIGHTLY DUE TO  
SURFACE TEXTURE, APPLICATION TECHNIQUE  
AND LIGHTING CONDITIONS)

IF YOU'VE EVER SAID  
TO YOURSELF,  
"THERE MUST BE AN EASIER  
WAY TO WATERPROOF MY  
ROOF DECK..." YOU JUST  
FOUND IT!

GacoDeck Kit includes the necessary supplies for waterproofing your deck. There's no need to hunt for texture granules, polyester tape, a paintbrush, or the right roller.

Your supplies are all neatly packaged inside the GacoDeck Kit bucket, along with a how-to DVD and complete step-by-step application instructions.



**NEED HELP?**

- Call us 7 days a week
- 7am to 7pm PST
- Expert customer care



**GACO**

WWW.GACORETAIL.COM  
GACO HELPLINE: (866) 422-6489

# GacoDeck®



**TOTAL  
WATERPROOFING FOR  
YOUR ROOF DECK.**

- 50-year limited warranty
- Turns a flat roof into a deck
- Provides a skid-resistant surface
- Covers plywood, concrete, metal and fiberglass
- Meets ADA recommended standards



**GACO**

CEMENTS AND COATINGS FOR ROOFING SYSTEMS  
CLASSIFIED BY UNDERWRITERS LABORATORIES INC.  
AS TO AN EXTERNAL FIRE EXPOSURE ONLY 60PO



\* See product packaging for warranty details

GDB1 25M 07/11

# GacoDeck® THE EASY WATERPROOFING FOR YOUR ROOF DECK.

## WHAT CAN I DO WITH GACODeck?

GacoDeck allows homeowners to apply a high-quality waterproof deck system over plywood, concrete, metal, fiberglass, and painted surfaces (metal and fiberglass surfaces require a primer). The GacoDeck system provides lasting surface protection and waterproofing, plus a skid-resistant surface that cleans up easily. One GacoDeck Kit will cover 100 square feet.

Unlike other do-it-yourself deck systems, the GacoDeck system waterproofs rooftop decks over occupied living space. GacoDeck is the same top-quality, durable acrylic coating used by decking professionals.

GacoDeck creates a fully-adhered, durable waterproof membrane which expands and contracts along with the substrate.

GacoDeck is perfect in hot or cold climates as it's a high-quality coating that does not soften in the heat or become brittle from cold.

## RAMPS, STAIRS, & MORE

GacoDeck coating will also provide an attractive, skid-resistant surface on platforms such as decks, boat docks, and stair treads, or on wheel chair ramps and walkways. For these applications, GacoDeck functions as a durable, easy to clean surface. See instructions for details.

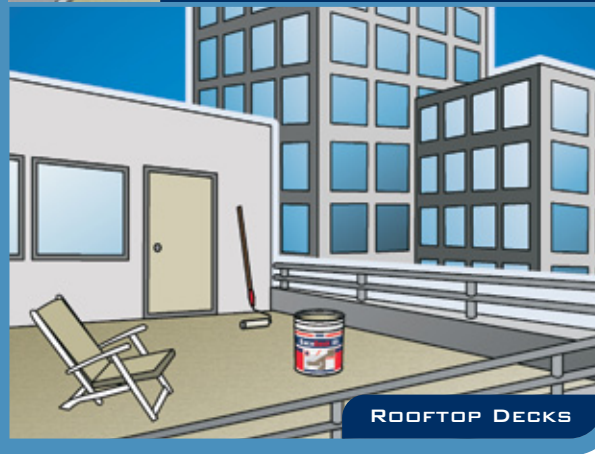
GacoDeck coating meets the recommended standards for accessible routes set forth by the Americans with Disabilities Act.



## GACODeck ADHERES TO A VARIETY OF DECK SURFACES



LANAIS, PATIOS AND BALCONIES



ROOFTOP DECKS

## ABOUT GACO WESTERN

Gaco Western has manufactured high-quality waterproofing systems for more than 50 years. The GacoDeck waterproofing system is the same top-quality elastomeric coating used by professional decking contractors.

## WITH GACODeck, YOU GET IT ALL!

With the GacoDeck Kit, there's no need to hunt for polyester tape, brushes or rollers. It's all neatly packaged inside. To ensure the most user-friendly experience, the GacoDeck Kit includes step-by-step instructions and a DVD demonstration of a GacoDeck application from start to finish. Once the project is complete, clean up is easy — just use soap and water.

### THE GACODeck KIT INCLUDES EVERYTHING YOU NEED TO GET STARTED:

- Instructions
- One 3/8" nap roller cover
- 1.5 pounds of GacoGrip texture granules
- One roll (4"x120') of GacoTape
- One 3" paint brush
- One DVD with detailed instructions
- 3.5 gallons of GacoDeck Coating



The following items, not included in the GacoDeck Kit, may also be required for the project:

- 9" roller frame
- Paddle for stirring
- High-quality, paintable acrylic caulk
- Masking tape
- Rags for clean-up
- Exterior primer
- Scissors



Product available in gallons for smaller projects

For more information or to view the online instructional video, visit [WWW.GACORETAIL.COM](http://WWW.GACORETAIL.COM)



# GacoDeck®

## APPLICATION INSTRUCTIONS

GacoDeck is a high-quality waterproof deck system that can be applied over plywood, concrete, metal, fiberglass and previously coated decks. The GacoDeck system provides lasting protection and waterproofing, plus a skid-resistant surface that cleans up easily. To ensure proper performance, it is imperative that all preparation instructions and application techniques are followed. Enclosed in the kit is a "how-to" DVD with step-by-step instructions. It can also be viewed at [www.gacoretail.com](http://www.gacoretail.com). Additional help can be obtained by calling the Gaco helpline at 1-866-422-6489.

### Special Circumstances

During hot weather (above 90°) apply coating in morning or evening. Do not apply at temperatures below 50°, or when temperature will fall below 50° within 6 hours. Wait two or more days before using deck or placing heavy objects on surface. In extremely cold climates (10-15° over three month period), GacoDeck Primer must be used in conjunction with GacoDeck. If GacoDeck Primer is not used with GacoDeck, your deck could experience surface cracks. There are two modifications to the instructions above for extreme cold weather climates. First, all taping and flashing details must utilize GacoDeck Primer instead of GacoDeck coating. Second, apply one coat of GacoDeck Primer at rate of 1 gallon per 200 square feet over entire surface prior to the first base coat. After primer is dry, you can follow normal GacoDeck instructions starting with "First Base Coat" section.

### Substrates

**PREVIOUSLY COATED SURFACES:** Clean surface by pressure washing or thorough scrubbing with GacoWash concentrated cleaner and water. Allow surface to dry for a minimum of 48 hours during dry, warm weather. If applicable, prepare all cracks and seams following "Caulking, Taping & Flashing" directions. Prime surface with GacoDeck Primer at the rate of 1 gallon per 200 square feet over entire surface before applying first top coat. If surface is previously painted and has a glossy finish, lightly sanding the surface is recommended before applying GacoDeck Primer.

**PLYWOOD:** Clean surface by pressure washing or thorough scrubbing with GacoWash concentrated cleaner and water. Allow surface to dry for a minimum of 48 hours during dry, warm weather. Prepare all cracks and seams following "Caulking, Taping & Flashing" directions. No primer is required for standard or pressure treated plywood applications. If it is a previously coated plywood deck please see "Previously Coated Surfaces" directions. Do not use unsuitable grades of plywood. GacoDeck is NOT recommended for teak, cedar or redwood due to tannin bleeding on light colors. GacoDeck is not recommended if joints and cracks exceed 1/8" wide. Refer to the application brochure inside this kit for full details.

**CONCRETE:** Concrete surfaces to receive GacoDeck coating must be structural concrete which is properly ventilated. "On grade" concrete slabs must be poured over minimum 4" pea gravel base or equivalent. Concrete must cure and dry four weeks before GacoDeck application. Concrete surface should be smooth and free from rock pockets or voids without being burnished. Etching of concrete is not

View the GacoDeck application video before beginning your deck. All surfaces must be dry and clean, without wax, dust, oil, asphalt or contaminants. Do not apply GacoDeck if rain is expected. GacoDeck is not recommended over asphalt coatings.

normally required. If concrete surface shows evidence of dusting or chalk, etch surface prior to coating application as follows: Apply diluted muriatic acid (3 parts water/1 part muriatic acid) at a rate of 75 square feet per quart following label directions and precautions. Allow the etching solution to work for 2-3 minutes. Scrub with stiff brush and flush with clean water to rinse from surface. Allow surface to dry for a minimum of 48 hours during dry, warm weather.

**METAL & FIBERGLASS:** Metal surfaces must be primed. Lightly sand surface and prime with exterior metal primer. Fiberglass must be dry and clean. Lightly sand. Treat seams, splits, cracks and breaks as you would plywood joints.

### Caulking, Taping and Flashing

Apply a high-quality 50-year, water-resistant and paintable acrylic caulking to all joints and cracks. (Use only premium acrylic caulking.) Do not use caulking on joints and cracks larger than 1/8" wide. Smooth the caulk flush with deck surface. Allow caulking to cure according to manufacturer recommendations. Verify caulking is fully cured by inserting a round tapered toothpick completely into caulking in various areas throughout the deck. When removing the toothpick, if it is completely free of liquid caulking, it is cured and ready to proceed. Caulking that is allowed to dry more than 24 hours should be wiped with a damp cloth prior to application. Joints, cracks and changes of plane must be taped (For more information, see detailed application instructions inside the GacoDeck Kit). To begin taping, brush a 5-6" wide stripe of GacoDeck coating, centering the stripe over joints or cracks. Work in small sections as acrylic coatings dry quickly. While the coating is still wet, embed GacoDeck Tape smoothly into the coating. Brush another layer of coating over the tape, smoothing out any wrinkles. Brush coating beyond the tape, approximately 2-3" for a smooth transition. Allow the surface to dry. For a seamless finish, lightly sand the edges of the coated tape with medium grit sandpaper using a palm sander or sanding block before applying the first coat.

All flashing must be flush with surface. If installing flashing, nail or screw every six inches. Care should be taken to not buckle the flashing during installation. Prime all metal flashing with appropriate exterior metal primer. All flashing must be taped following the directions above.

If the GacoDeck coating will terminate where there is no natural break, use masking tape to create a clean, sharp edge.

### Coating Application

**FIRST BASE COAT:** Confirm that the substrate is completely dry by laying a 4 sq. ft. piece of plastic sheeting on the deck, taped at all four corners. After a minimum of 4 hours, pull back the plastic and verify there is no amount of moisture on the deck or plastic. If moisture persists, continue drying and retest for moisture until none exists. Apply uniform coat of GacoDeck using 3/4 gallon per 100 square feet over entire surface, including taped or flashed areas. Unlike paint, apply a heavy coat in order to create the waterproof elastomeric membrane. Allow surface to dry until it can be walked on, 2-4 hours in ideal conditions. While the first coat dries, wrap the roller cover in aluminum foil or plastic.

**SECOND BASE COAT:** Apply another uniform coat of GacoDeck using 3/4 gallon per 100 square feet over entire deck surface, including taped or flashed areas. Allow the surface to dry until it can be walked on, 2-4 hours in ideal conditions. While the second coat dries, wrap the roller cover in aluminum foil or plastic.

**TOP COATS:** GacoGrip texture granules create a decorative and slip-resistant finish for your deck. Add all of the GacoGrip granules to the remaining coating. Stir thoroughly. After adding texture, apply two top coats at 3/4 gallon per 100 square feet per coat. Best results are achieved by applying texture coats in parallel overlapping roller passes. Apply first coat in a North-South direction and the second coat in an East-West direction or vice-versa. Allow the first coat to dry before applying the final coat. If you must wait more than 72 hours between coats, wash the surface with GacoWash or general deck cleaner, rinse well and allow to dry completely. GacoDeck must be applied at the proper rate (100 square feet) per kit to ensure proper coating thickness. Failure to do so voids the warranty and may result in the products failure to provide a waterproof membrane. Do not apply GacoDeck in temperatures below 50° F or above 100° F. Clean up GacoDeck with soap and water. Allow two or more days for coating to cure before using deck or placing heavy objects on it.

## GACO DECK KIT 50-YEAR LIMITED WARRANTY

Gaco Western warrants that the GacoDeck elastomeric coating will last 50 years on the surface it is applied to, subject to strict adherence to Gaco Western's application instructions, and subject to recoat procedures for normal wear and tear. This warranty is limited to GacoDeck elastomeric coating only. If GacoDeck elastomeric coating does not meet the warranted standard, Gaco Western will replace elastomeric coating included in GacoDeck at no cost to purchaser. Proof of purchase required. **WARRANTY SPECIFICALLY EXCLUDES ALL LABOR OR COSTS OF LABOR, and ALL INCIDENTAL OR CONSEQUENTIAL DAMAGES OF ANY KIND.** The GacoDeck limited warranty excludes abuse of installed deck coating in any way, including, but not limited to non-pedestrian traffic, burns, chemicals, spiked shoes, sharp or abrasive objects, excessive weight, roots and planters set directly on deck surface, or submersion for any period of time. This warranty is void if GacoDeck elastomeric coating is painted or covered over with any product except GacoDeck Top Coat. This 50-year limited warranty is not transferable to successive property owners. Gaco Western has no control over the variables involved during application of a GacoDeck. Therefore, Gaco Western cannot guarantee results of the application, including, but not limited to, appearance, watertight capabilities, slip-resistance, or suitability of the surface GacoDeck is applied to. Gaco Western offers no other express or implied warranties.

This warranty gives you specific legal rights; you may have other rights, which vary from state to state. Some states do not allow exclusion of incidental or consequential damages, so limitations or exclusions contained above may not apply. To make a warranty claim, call Gaco Western at 1-866-422-6489.

## DECK CONSTRUCTION AND PRELIMINARY PREPARATION

Your GacoDeck Kit will only be successful if you follow construction and deck surface instructions below.

### Plywood

Grades: Plywood should carry the trademark of the American Plywood Association. Grades "Exterior/APA A/C Group I" and "Exterior/APA B/C Group I" are suitable, as well as "Marine" grade plywood. Unsuitable grades are interior grade plywood with or without exterior glue, and underlayment grade plywood, such as "C/C Exterior," OSB, Waferboard and Exposure I markings. Do not use unsuitable grades. GacoDeck Kit is NOT recommended for Teak, Cedar or Redwood.

### Installation

All panel edges, including tongue and groove plywood, should be supported on blocking or primary framing. Plywood should be continuous across supports with all edges in moderate contact. Plywood joints should be 1/16", level and smooth.

Thickness of plywood and spans should meet the following minimums:

- 1/2" for plank or other solid substrates only
- 5/8" for supports 16" OC
- 3/4" for supports 24" OC
- 1-1/8" for supports 48" OC

Stagger joints when installing plywood over sheated or dimensional (planked) decks.

### Repairs to Plywood

Plastic wood patch materials may be used to repair damaged plywood. Sanding before taping, especially at the joints, will improve the final appearance of the deck.

The deck should be sloped in order to freely drain, preferably to a drain or gutter (see Figure 4). One-quarter inch slope per foot is recommended. Slope is a function of structural design, and the GacoDeck Kit cannot be used to provide such a slope where it does not already exist. A deck that lacks adequate slope may experience leaks at low thresholds, standing puddles, or surface stains from ponded water and debris. Avoid soiling the fascia by incorporating a gutter or drain into your design. Insert drain flush with plywood. Install a positive drip so that drainage is outside the fascia.

### Ventilation

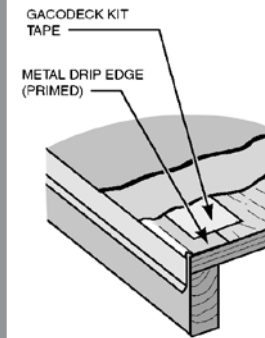
Good design requires that adequate ventilation be provided for the deck structure. Allow a minimum of 1" air space between the bottom of the deck and any thermal insulation.

### Nailing

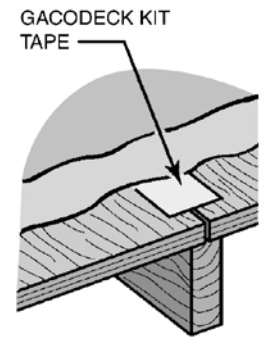
Use non-rusting screws, non-rusting ring shank nails, or hot-dipped galvanized box nails only. The nails should be 6D for 3/4" or less plywood, 8D for 7/8" or more, and 10D for 1-1/8" plywood. Space fasteners 6" on center, along panel edges, and 12" on center in all directions in the field. Drive nails flush without indenting plywood.

For additional information go to [www.gacodeckkit.com](http://www.gacodeckkit.com) and check the Frequently Asked Questions (FAQ) page.

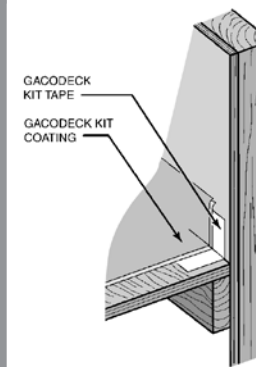
**FIG. 1 :  
Perimeter Detail**



**FIG. 2 :  
Joint Detail**



**FIG. 3 : Change  
of Plane Detail**



**FIG. 4 : Plywood  
Drain Detail**

