

# MasterFlow® Roof Caps and Other Accessories

*Updated: 9/11*



*Quality You Can Trust...From North  
America's Largest Roofing Manufacturer!™*

[www.gaf.com](http://www.gaf.com)



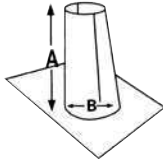
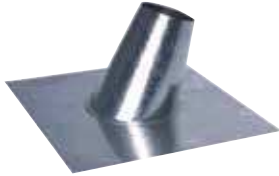
# Roof Caps And Other Accessories



## Zinc Moss & Mildew Preventer

- EPA approved
- Installs easily near the roof ridge
- For composition, shake or tile roofs
- For long-lasting protection

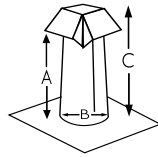
Model No.	Description
<b>NMM50</b>	Tray Pack (6 rolls) – 2.67" X 50ft. coil



## Roof Flashing With Tapered Stack

- Press sealed design for maximum leak protection
- 30 Gauge - Specified .013 - .015**

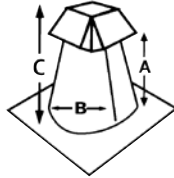
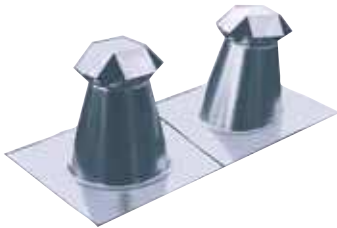
Model No.	Fits Pipe Diameter	Base Size	"A"	Dimensions "B"	"C"
<b>RFTS3</b>	3"	12"X12"	6.125"	5.125"	NA
<b>RFTS4</b>	4"	13"X13"	6.375"	6.125"	NA
<b>RFTS5</b>	5"	15"X15"	6.25"	7.125"	NA
<b>RFTS6</b>	6"	15"X15"	6.75"	8.125"	NA
<b>RFTS7</b>	7"	15"X15"	6.5"	8.125"	NA



## Roof Jacks With Vent Caps

- Use for venting kitchen & bath fans, & attic ventilation

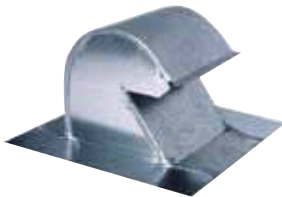
Model No.	Fits Pipe Diameter	Base Size	"A"	Dimensions "B"	"C"
<b>28 Gauge - Specified .015</b>					
<b>RJVC3</b>	3"	12"X12"	8.5"	5.125"	10.25"
<b>RJVC4</b>	4"	13"X13"	8.125"	6.125"	10.25"
<b>RJVC6</b>	6"	15"X15"	8.25"	8.125"	10.75"
<b>RJVC7</b>	7"	15"X15"	6.625"	8.125"	9"
<b>RJVC8</b>	8"	18"X18"	9.75"	10.125"	12.5"
<b>26 Gauge - Specified .019</b>					
<b>26RJVC4</b>	4"	13"X13"	8.125"	6.125"	10.125"
<b>26RJVC5</b>	5"	15"X15"	8.825"	7.125"	10.5"
<b>26RJVC6</b>	6"	15"X15"	8.25"	8.125"	10.75"
<b>26 Gauge - Roof Jacks with Vent Caps - No Pitch</b>					
<b>F26RJVC4</b>	4"	13"X13"	7.625"	6.125"	10.125"
<b>F26RJVC5</b>	5"	15"X15"	8.125"	7.125"	9.875"
<b>F26RJVC6</b>	6"	15"X15"	8.25"	8.125"	10.75"



## All Purpose Vents

- Large 10" base opening for gang venting
- 26 gauge - specified .019

Model No.	Base Size	"A"	Dimensions "B"	"C"
<b>26APV10</b>	16"X16"	10.375"	9.875"	12.00"
<b>F26APV10</b>	16"X16"	10.375"	9.875"	11.75"



## Goose Neck Vent

- 26 gauge - specified .019
- Available in black or aluminum finish

Model No.	Fits Pipe Diameter	Base Size	"A"	Dimensions "B"	"C"
<b>GNV4</b>	4"	11.625" x 9.12"	NA	4.125" x 6.5"	6.375"
<b>GNV6</b>	6"	11.75" x 11.25"	NA	6.125" x 6.625"	6.25"
<b>GNV10</b>	10"	16" x 16"	NA	10" x 10"	8.75"

NOTE: Available in various colors, call for further details.



## Vent Caps

- To cap pipes for rain, snow and debris protection
- 30 gauge - specified .013 - .015

Model No.	Fits Pipe Diameter
<b>VC3</b>	3"
<b>VC4</b>	4"
<b>VC5</b>	5"
<b>VC6</b>	6"
<b>VC7</b>	7"
<b>VC8</b>	8"



## Storm Collars

- Adjustable for various pitches
- 28 Gauge - Specified .015**

Model No.	Fits Pipe Diameter
<b>SMC3</b>	3"
<b>SMC4</b>	4"
<b>SMC5</b>	5"
<b>SMC6</b>	6"



## Versa Caps

- Non-clogging, positive draft design
- For chimney, flue or hot stack installation
- Clamp fitting that's adjustable for all standard sizes
- Aluminum models, U.L. listed

Alum. Model No.	For Pipe with an Outside Dia. of:	For Dbl. Wall Metal Pipe	For Sgl. Wall Metal Pipe	For J-M Trans-Site	Overall Ht.	Overall Dia.
<b>3050</b>	2 <sup>7</sup> / <sub>8</sub> "-5"	3" & 4"	3" & 4"	3" & 4"	4 <sup>1</sup> / <sub>2</sub> "	6 <sup>5</sup> / <sub>8</sub> "
<b>5070</b>	4 <sup>7</sup> / <sub>8</sub> "-7"	5" & 6"	5" & 6"	5" & 6"	4 <sup>3</sup> / <sub>4</sub> "	9 <sup>1</sup> / <sub>2</sub> "
<b>7090</b>	6 <sup>7</sup> / <sub>8</sub> "	7" & 8"	7" & 8"	7" & 8"	5 <sup>7</sup> / <sub>8</sub> "	11 <sup>1</sup> / <sub>8</sub> "
<b>9011</b>	8 <sup>7</sup> / <sub>8</sub> "-11"	9" & 10"	9" & 10"	9" & 10"	6 <sup>1</sup> / <sub>2</sub> "	12 <sup>3</sup> / <sub>4</sub> "
<b>1200</b>	11 <sup>7</sup> / <sub>8</sub> "-14 <sup>1</sup> / <sub>2</sub> "	12"	12" & 14"	12"	8 <sup>1</sup> / <sub>16</sub> "	17 <sup>9</sup> / <sub>16</sub> "