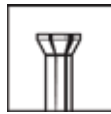
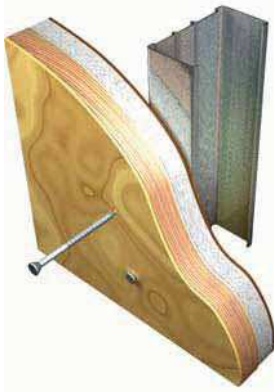




## Exterior Wood

Product #214

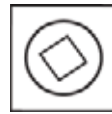
## Trim Head Streaker



Trim



Streaker



#1 Square

**Self tapping screw for attaching wood trim over single or double-layer gypsum board to steel**

**Finish - GrabberGard**

### Applications

- Wood trim over single and double-layer gypsum board to 20 to 25 gauge steel studs and track
- Wood trim over single and double-layer gypsum board to wood studs

### Specifications

- Gauge – #7 and #8
- Lengths – 1-5/8" to 3"
- Head Type – Trim
- Recess Type – #1 square
- Thread Type – Double Lead
- Finish – Gray Phosphate, Clear Zinc, GrabberGard
- GRABBER screws are manufactured in an ISO 9002 and ISO 14001 certified and approved factory, and are approved by ICBO ES ER #5280.

### Product Features

- A fine thread screw for finishing applications
- 15 threads per inch
- Super sharp, 23° STREAKER point, designed to penetrate steel quickly and easily
- #1 square recess drive

### Installation Guidelines

- Use a standard screwgun with a depth-sensitive nose piece. Suggested screwgun specification for optimal performance – 4 amps minimum and 2500 RPM.
- The Trim head is fully seated when the head is flush with the work surface.
- Overdriving may result in failure of the fastener or stripout of the work surface.
- The fastener must penetrate beyond the metal a minimum of three thread pitches.

# Exterior Wood

## Product #214 Trim Head Streaker

### Product Sizes and Ordering Information

Catalog No.	Gauge/Length	Length Metric	Quantity per Carton*	Weight Per Carton
17SRG	#7x1-5/8"	41 mm	10 M	49.00(lbs)
18SRG	#7x2-1/4"	57 mm	5 M	34.00(lbs)
17S76RG	#8x3"	76 mm	2 M	22.00(lbs)

\*1lb Box and 5lb Box screw packaging option available on selected items.

### Pull-out and Shear Test Data\*\*

Screw Gauge	Metal Gauge	Tension (lbs.)	Shear (lbs.)
#7	20	222	817
	25	100	245
#8	20	342	785
	25	145	325

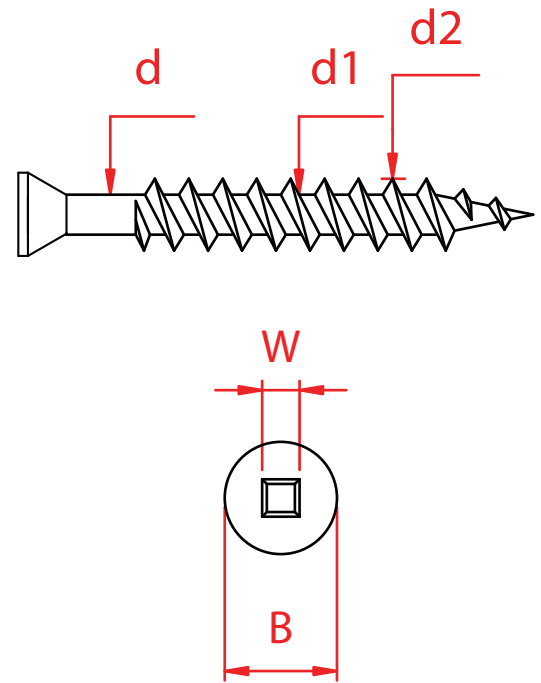
\*\*GRABBER fasteners are not categorized as structural bolts. The figures listed above are ultimate average values achieved under independent laboratory conditions, and apply to GRABBER Line fasteners only. An appropriate safety factor must be determined by a qualified professional for design purposes.

### Standard Corrosion Test Results

Finish	Test	Standard/Protocol	Results
GrabberGard	Salt Spray Results	ASTM B117	1,000 hours, no red rust
GrabberGard	Kesternich Results	DIN 50018, 2.0L	15 cycles, no red rust

### Product Dimensions (millimeters)

Gauge	B Head Dia	Recess Depth	W Gauging Width	d Shank Dia	d1 Minor Dia	d2 Major Dia	TPI
#7	5.30	1.20	#1	2.93	2.40	3.75	15
	5.80	1.50		2.97	2.55	3.90	
#8	5.30	1.20	#1	3.18	2.80	4.00	15
	5.80	1.50		3.22	3.00	4.20	



### Sheet Steel Gauges

Gauge No.	Decimal Equivalent	Millimeter Equivalent
20	0.0396"	1 mm
25	0.0188"	.6 mm



GRABBERGARD® and Grabber Stainless Wood screws are produced in an ISO 9001 approved and certified environment, and meet or exceed American Society for Testing and Materials Standards ASTM Designation B117 (1000hrs) for Corrosion Resistance and D1761 for Mechanical Fasteners for Wood. GRABBER®, STREAKER®, DRIVALL®, LOX®, GRABBERGARD® and SCAVENGER® are registered names or trademarks by John Wagner Associates, Inc., dba Grabber Construction Products.

Distributed by:



205 Mason Circle  
Concord, CA 94520  
1.800.477.TURN