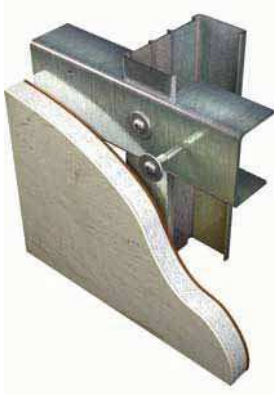




Light Gauge Metal (20-25)

Product #220

Wafer Head Streaker



Wafer, Type A



Streaker



#2 Phillips

Self tapping, low profile screws for attaching lath or light gauge metal to 20 to 25 gauge steel studs and framing

Finish - Clear Zinc and GrabberGard Gray

Applications

- Steel studs to 20 to 25 gauge track
- Metal K-lath, wire lath, wood grounds, and metal studs to 20 – 25 gauge steel
- Other metal-to-metal applications that require low profile head exposure

Specifications

- Gauge – #8
- Lengths – 9/16" to 3"
- Head Type – Wafer
- Recess Type – #2 Phillips
- Thread Type – Double Lead
- Finish – Gray Phosphate or Clear Zinc
- GRABBER screws are manufactured in an ISO 9002 and ISO 14001 certified and approved factory, and are approved by ICBO ES ER #5280.

Product Features

- A fine thread screw for metal-to-metal applications
- Low profile head exposure
- 15 threads per inch
- Super sharp, 23° STREAKER point, designed to penetrate steel quickly and easily
- #2 Phillips recess drive
- Wafer head provides a greater bearing surface than other fasteners

Installation Guidelines

- Use a standard screwgun with a depth-sensitive nose piece. Suggested screwgun specification for optimal performance – 4 amps minimum and RPM range of 0 to 4,000.
- The Wafer head is fully seated when the head is flush with the work surface.
- Overdriving may result in failure of the fastener or stripout of the work surface.
- The fastener must penetrate beyond the metal a minimum of three thread pitches.

Light Gauge Metal (20-25)

Product #220

Wafer Head Streaker

Product Sizes and Ordering Information

Catalog No.	Gauge/Length	Length Metric	Quantity per Carton*	Weight Per Carton
32RG	#8x1"	25 mm	5 M	26.00(lbs)
32Z	#8x1"	25 mm	5 M	26.00(lbs)
3138Z	#8x1-1/2"	38 mm	3 M	21.00(lbs)
33RG	#8x1-1/4"	32 mm	5 M	31.00(lbs)
33Z	#8x1-1/4"	32 mm	5 M	31.00(lbs)
3151Z	#8x2"	51 mm	2.5 M	22.00(lbs)
3163Z	#8x2-1/2"	63 mm	2.5 M	26.00(lbs)
3176Z	#8x3"	76 mm	1 M	12.00(lbs)
31RG	#8x9/16"	14 mm	10 M	37.00(lbs)
31Z	#8x9/16"	14 mm	10 M	37.00(lbs)

*1lb Box and 5lb Box screw packaging option available on selected items.

Pull-out and Shear Test Data**

Screw Gauge	Metal Gauge	Tension (lbs.)	Shear (lbs.)
#8	20	342	785
	25	145	325

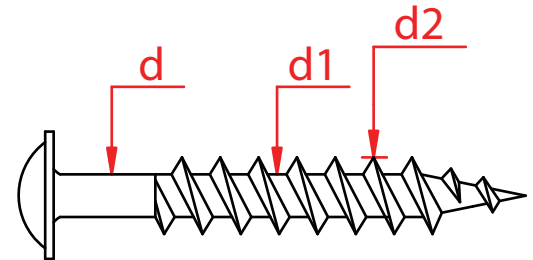
**GRABBER fasteners are not categorized as structural bolts. The figures listed above are ultimate average values achieved under independent laboratory conditions, and apply to GRABBER Line fasteners only. An appropriate safety factor must be determined by a qualified professional for design purposes.

Standard Corrosion Test Results

Finish	Test	Standard/Protocol	Results
Clear Zinc	Salt Spray Results	ASTM B117	24 hours, no red rust
GrabberGard	Salt Spray Results	ASTM B117	1,000 hours, no red rust
GrabberGard	Kesternich Results	DIN 50018, 2.0L	15 cycles, no red rust

Product Dimensions (millimeters)

Gauge	B Head Dia	Recess Depth	W Gauging Width	d Shank Dia	d1 Minor Dia	d2 Major Dia	TPI
#8	10.80	2.00	#2	3.18	2.80	3.20	15
	11.40	2.40		3.22	3.00	3.40	



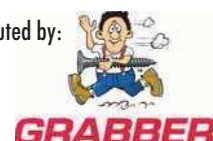
Sheet Steel Gauges

Gauge No.	Decimal Equivalent	Millimeter Equivalent
20	0.0396"	1 mm
25	0.0188"	.6 mm



All GRABBER® screw products are manufactured in facilities that are ISO 9002 and ISO 1401 certified and approved. The fasteners comply with SAE J78 and ASTM C1002 or C954, as referenced in ICBO report ER-5280, and are approved for use by the Uniform Building Code. ©2008 John Wagner Associates, Inc. GRABBER®, STREAKER®, DRIVALL®, LOX®, GRABBERGARD® and SCAVENGER® are registered names or trademarks by John Wagner Associates, Inc.,

Distributed by:



205 Mason Circle
Concord, CA 94520
1.800.477.TURN