

Firestop Putty Stick (CP 618)

Product description

- An intumescent, non-hardening, firestop putty for cable and pipe penetrations

Product features

- Contains no volatile solvents or asbestos
- Easy to re-penetrate
- Reusable
- Easy to add or remove cables
- Fast installation

Areas of application

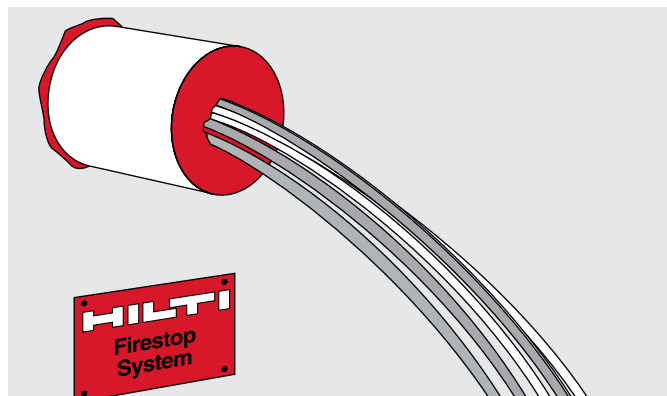
- Single or bundled cables
- Non-combustible pipe
- Blank openings

For use with

- Concrete, masonry and gypsum wall assemblies
- Wall and floor assemblies rated up to 3 hours

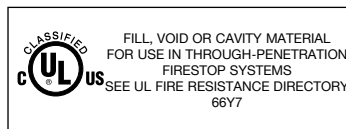
Examples

- Where telecommunication and data lines penetrate gypsum wall assemblies
- Where steel conduit and EMT penetrate concrete and block wall assemblies
- Where blank openings exist in concrete and block wall assemblies



Technical Data*	CP 618
Volume	18 in ³
Consistency	Moldable putty
Color	Red
Application temperature	40°F to 95°F (5°C to 35°C)
Curing time	Non-curing
Density	Approx. 1.48 g/cm ³
Surface burning characteristics (ASTM E84-96)	Flame Spread: 15 Smoke development: 10
Sound transmission classification (ASTM E 90-97)	49 (Relates to specific construction)
Tested in accordance with	
• UL 1479 • ASTM E 814 • ASTM E 84 • ASTM G21	

*At 73°F (23°C) and 50% relative humidity



Installation instructions for CP 618

Notice

- Before handling, read Material Safety Data Sheet and product label for safe usage and health information.
- Instructions below are general guidelines — always refer to the applicable drawing in the UL Fire Resistance Directory or Hilti Firestop Systems Guide for complete installation information

Opening

1. Clean the opening: Surfaces to which CP 618 will be applied should be cleaned of loose debris, dirt, oil, moisture, frost and wax.

Application of firestop putty

2. Install the prescribed backing material, if required.
3. Install CP 618 Firestop Putty to the required depth, making sure that the putty contacts all surfaces to provide the greatest adhesion.

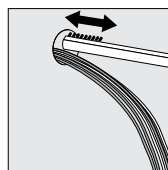
4. Smooth CP 618 putty.
5. For maintenance reasons, a penetration seal can be permanently marked with an identification plate and fastened in a visible position next to the seal.
6. Re-installation (not shown): Remove and re-install CP 618 Firestop Putty as needed.

Not for use

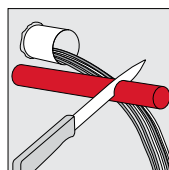
- In areas exposed to water

Storage

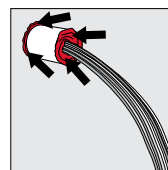
- Store only in the original packaging at temperatures 40°F to 104°F (5°C to 40°C)



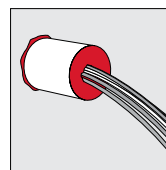
1. Clean opening



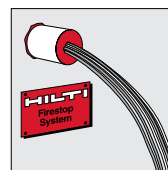
2. Slice CP 618 to be packed into opening from stick (optional sleeve)



3. Pack in CP 618



4. Smooth CP 618



5. Fasten installation plate (if required)

Hilti. Outperform. Outlast.

Hilti, Inc. (U.S.) 1-800-879-8000 • www.us.hilti.com • en español 1-800-879-5000 • Hilti Firestop Systems Guide



Hilti Firestop
Saving lives
through innovation
and education