



440 SOUND BARRIER®

1/2" 4'x4', 4'x8' and 4'x10'

Sound Control Panels

• High-Rise • Mid-Rise • Commercial • Single Family



440
SOUNDBARRIER

CARPET AND PAD

SUBFLOOR

Adds Quiet Living® to Every Room

- Economical
- Home Theatres
- Media Rooms
- Commercial
- Renovations
- Loft Conversions
- Multi/Single/Family

homasote
COMPANY

Homasote® board, 98 percent post-consumer paper content with no harmful chemicals or formaldehyde additives, is uniformly manufactured with protection against termites, and resistance to mold, mildew and moisture.



Building Code Now Calls For Strict Sound Control

Build quiet floors and walls with 440 SoundBarrier®

IBC Section 1207 Sound Transmission

1207.1 Scope. This section shall apply to common interior walls, partitions and floor/ceiling assemblies between adjacent dwelling units or between dwelling units and adjacent public areas such as halls, corridors, stairs or service areas.

1207.2 Air-borne sound. Walls, partitions and floor/ceiling assemblies separating dwelling units from each other or from public or service areas shall have a sound transmission class (STC) of not less than 50 (45 if field tested) for air-borne noise when tested in accordance with ASTM E 90.

1207.3 Structure-borne sound. Floor/ceiling assemblies between dwelling units or between a dwelling units and public or service area within the structure shall have an impact insulation class (IIC) rating of not less than 50 (45 if field tested) when tested in accordance with ASTM E 492.

Sound Ratings

(IIC) Impact Insulation Class

Single-number rating that indicates the amount of impact noise isolation provided by a floor/ceiling assembly. The higher the number, the quieter the floor/ceiling assembly.

(STC) Sound Transmission Class

Single-number rating that indicates the sound transmission loss of a partition or ceiling system between adjacent closed rooms.

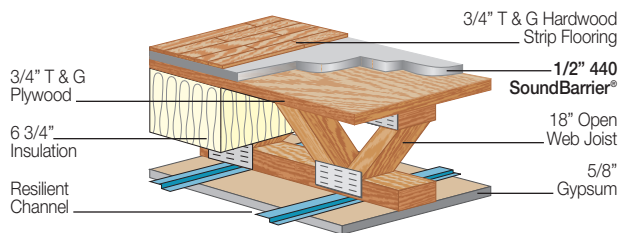
STC Ratings

- 25** Normal speech can be understood clearly.
- 30** Loud speech can be understood fairly well.
- 35** Loud speech audible but not intelligible.
- 42** Loud speech audible as a murmur.
- 45** Must strain to hear loud speech.
- 48** Some loud speech barely audible.
- 50** Loud speech not audible.

440 SOUND BARRIER®

Recognized in UL® L500 Series Floor-Ceiling Assemblies

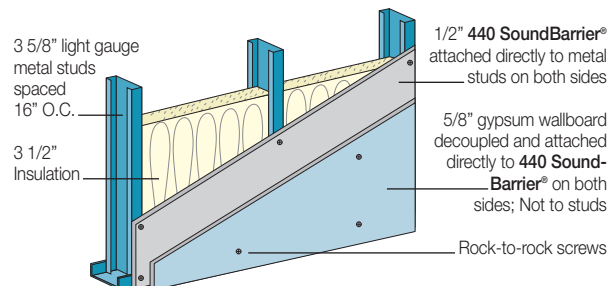
Floor Assembly STC 54 and IIC 51



Carpet and Pad STC 51 and IIC 75
Wood Floating Floor STC 52 and IIC 51
Call Tech Support for Other Finishes

Wall Assembly STC 51

One-Hour Fire-Rated UL® Design Numbers V448 and W448



To view all Homasote Company assembly drawings please visit www.homasote.com

Homasote is uniformly manufactured with protection against termites, and resistance to mold, mildew and moisture.

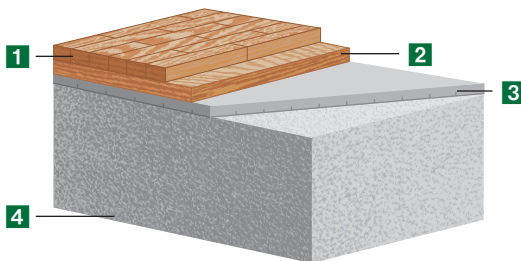
ComfortBase[®]

Muffles impact sound in high-rise luxury condos

High-Rise and Mid-Rise • Meets IBC Code • STC 51 IIC 53 • Economical • Easy to Install • 4' x 4' Panels



STC 51 IIC 53



- 1 3/4" T & G Hardwood Strip Flooring Mechanically Fastened*
- 2 3/4" T & G Plywood
- 3 .450" Thick **ComfortBase[™]**
- 4 8" Concrete Slab

**Call technical support for other systems*

Also Quiet Wall Assemblies

Get Sound Control and a One-Hour Fire Rating in One Decoupled 440 SoundBarrier[®] Wall Assembly

Recommended for Home Theatres

STC 51 - Metal Stud Wall

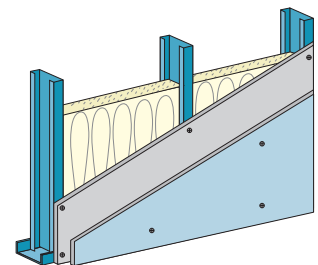
- Decoupled Wall System
- UL Fire-Rated One-Hour Assembly
- Single-Wall, Non Load-Bearing



Design No. W448



Design No. V448



Why use poured lightweight concrete that introduces moisture into a structure, cannot be installed in cold weather and requires jobsite shutdown when your framers can easily install ComfortBase with its unique kerfed bottom.



PINnacle™



BURLAP PANELS

Visit www.homasote.com for information, specs, installation and other information about Homasote Company products.

DIVISION 09

Section Tackable, Decorative Interior Panels

- Basic 440 SoundBarrier®
- PINnacle™
- PINnacle™ N.C.F.R.®
- Burlap Panel
- DesignWall®
- NovaCork
- N.C.F.R. Homasote®

DIVISION 07

Nailbase and Multi-Function Roofing Systems

- Firestall® Roof Deck
- EasyPly® Roof Deck
- Thermasote®
- N.C.F.R.® Thermasote®

DIVISIONS 03 AND 04

Concrete Forming and Accessories
Masonry Accessories

- Homex® 300



HOMEX® 300



FIRESTALL®

homasote

COMPANY

Controlling sound through millions of square feet of residential and commercial floors and walls over the past two decades, 440 SoundBarrier® is a lightweight, economical, 1/2-inch panel that on-site framers install easily.

Nailable, structural, mold-and-mildew-resistant, with nearly twice the R-value of wood, 440 SoundBarrier is the dry alternative to lightweight concrete. It weighs less than poured lightweight concrete and does not introduce moisture into the structure, an important consideration in today's mold-conscious world.

440 SoundBarrier reduces sound transmission through all floor finishes, including hardwood, floating wood/laminate, vinyl and other sound-projecting surfaces. Check with technical support for the latest installation instructions.

Homasote Company is unique. It's America's oldest manufacturer of building products from recycled material, where each production day up to 250 tons of post-consumer paper is pulped and then molded into Homasote® board — the basis of all Homasote Company products, including 440 SoundBarrier.

We've been green building since our factory was built in 1909, more than 60 years before the first Earth Day. As a member of the U.S. Green Building Council, our company is proud to offer products that architects, designers, specifiers and developers know can help contribute towards aggregate LEED® credits.

Sizes (all nominal)

Thickness	Sizes	Weight lbs./sq. ft.
3/8"	4' x 8'	1.0
1/2"	4' x 4', 4' x 8', 4' x 10'	1.2
5/8"	4' x 8', 4' x 10'	1.5
3/4"	4' x 8'	1.8

Other sizes available upon request.

Codes and Evaluations

F.H.A.—Materials Release No. 930e & 1150d
ICBO—Report No. 1016
ICC-ES File No. 04-02-05

Specifications

Density, lb./ft. ³	26-28
Tensile, parallel to surface, psi (min.)	450-700
Transverse M.O.E., psi (min.)	750-1000
Hardness, lbs. (min.) (Janka ball)	230
Water absorption by vol. (max.) (2 hrs. immers.)	5%
(24 hrs. immers.)	15%
Expansion from 50% to 90% (max.) rel. hum.	0.25%
R-value	3/8", 1.0; 1/2", 1.2; 5/8", 1.33; 3/4", 1.4
Flame Spread	Class C
Noise Reduction Coefficient20

Visit www.homasote.com for all the outstanding sound controlling, nailbase roofing, tackable wall panel, and concrete, products from Homasote Company.

932 Lower Ferry Road, West Trenton, New Jersey 08628
Phone: 800-257-9491 x 1500 Fax: 609-883-3497
www.homasote.com sales@homasote.com
Installation instructions and technical support, call x 1332

