



## **Expand-O-Flash®**

### *Roof Expansion Joint Covers*

Designed to manage the movement of commercial and industrial building roof systems. Thermal. Settlement. New and existing junctions. Differing roof deck materials or direction. Seismic movement.

Expand-O-Flash expansion joint covers are flexible, weatherproof, exterior covers for expansion joint openings and are an effective, flexible closure for a wide variety of standard and special applications. Each Expand-O-Flash cover is a combination of a flexible rubber membrane, supported by a closed cell foam to form flexible bellows, with two metal flanges, adhesively and mechanically combined to the bellows by a patented bifurcation process.

Flexible rubber membranes are available in white or black 60 mil EPDM, and black 60 mil Neoprene. Black EPDM is recommended for budget installations. White (sold at a premium) is used where color is important. However, white does not have the longevity of black. Neoprene is more expensive, and is recommended for use where exposure to process oils or animal fats is an issue. It also does not have the longevity of black EPDM.

Metal flanges are available in galvanized steel (26 ga), mill finish aluminum (0.032"), stainless steel (0.018") and copper (16 oz). Galvanized is recommended for budget installations. Aluminum is recommended for areas where longer exposure to severe elements is required. Stainless steel is effective on manufacturing facilities where corrosion could effect longevity of the metal. Copper is used to match other copper metal work.

Selected metals are available on special order including lead coated copper, Tern coated stainless, Kynar coated 24 gauge galvanized, and .032" aluminum and others.

Closed cell foam thickness varies in thickness from  $\frac{3}{8}$ " to  $\frac{3}{4}$ " depending on bellows width.

### **Expand-O-Flash®**

- Accommodates multidirectional movement
- Non-reinforced bellows for both geometric and elastomeric movement
- Available in 10 foot lengths, 50 and 100 foot rolls (larger rolls also available)
- Peel and Stick (for labor savings) splice tab kits included with all EPDM expansion joint covers.
- Compatible with built-up, modified bitumen (SBS and APP) and single ply (SPM) membranes
- Designed in a variety of styles for application requirements
- Labor saving factory crafted intersections to fit most needs or custom designed for special needs
- Over 40 years of proven design, fabrication and field performance
- Included in Johns Manville Roofing Systems Guarantees for single source responsibility up to 20 year NDL
- **10 Year Repair/Replacement Warranty. Includes labor and materials for replacement of expansion joint cover, factory produced intersections and field applied splices, when installed consistent with Johns Manville specifications and instructions.**



**Expand-O-Flash®**  
Roof Expansion Joint Covers

Each Expand-O-Flash style is made with a combination of proven materials.

**Flexible Membrane Cover**

- Type E-60 mil EPDM sheet – white or black (white is premium priced)
- Type N-60 mil Neoprene sheet – black (also premium priced)

**Flange Metal**

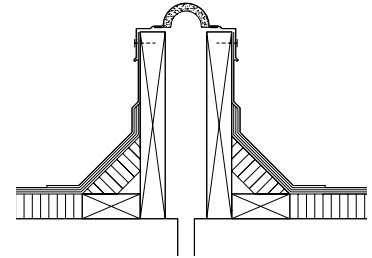
- Style EJ (Flat Flanges) 4" wide
- Style CF (Curb Formed) 2" wide and 2" vertical
- Galvanized Steel, 26 ga.
- Stainless Steel, .018"
- Aluminum, .032"
- Copper, 16 oz.
- Others available

**Support Foam**

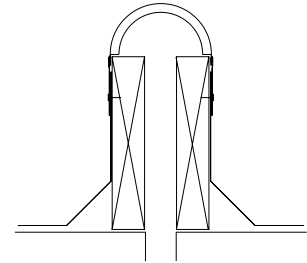
- Closed cell foam, K factor = .25 at ambient
- Thickness varies from 3/8" to 3/4" depending on bellows width

**For application to curbs**

**Style CF**



**Style EJ**

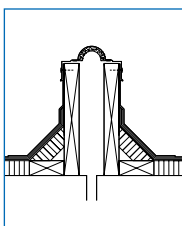


**Selection Chart for Standard Sizes**

**Type N (Neoprene) or Type E (EPDM)**

				Style EJ		Style CF and CF-EJ	
Joint Opening or Span		Bellows Width*	Foam Thickness	Style	Length	Style	Length
Roof-to-Wall	Roof-to-Roof						
1" to 2"	1½" to 2½"	4"	3/8"	EJ-4	10 ft./50 ft.	CF-4, CF-EJ-4	10 ft.
2" to 3"	2½" to 3½"	6"	1/2"	EJ-6	10 ft./50 ft.	CF-6, CF-EJ-6	10 ft.
3" to 4"	3½" to 5"	8"	1/2"	EJ-8	10 ft./50 ft.	CF-8, CF-EJ-8	10 ft.
4" to 5"	5" to 6½"	10"	5/8"	EJ-10	10 ft.	CF-10, CF-EJ-10	10 ft.
5" to 6"	6½" to 8"	12"	3/4"	EJ-12	10 ft.	CF-12, CF-EJ-12	10 ft.

\*Based on the rule of thumb method to determine bellows width for CF (Curb Form) and CF-EJ styles: Roof to Roof = 1.5 times (outside wood curb to outside of wood curb minus 4 inches); Roof to Wall: Bellows width = 2.0 times (outside wood curb to wall minus 2 inches). For EJ vertically mounted Roof to Roof = 1.5 times (outside wood curb to outside wood curb), for Roof to Wall = 1.5 times (outside wood curb to wall). For curb widths greater than 2½", see style EJ/WC page 7. **In all cases, anticipated movement should be considered for proper sizing.**



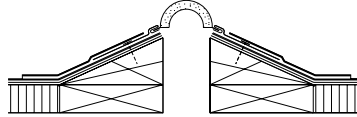
**Expansion joint detail for 1" joint**

In order to provide adequate clearance between metal flanges and bellows for a 1 inch expansion joint, a space of at least 2 inches should be left between curbs or curb and wall.

**Expand-O-Flash®**  
Roof Expansion Joint Covers

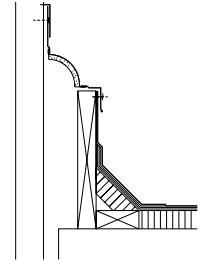
For application to cant

Style EJ



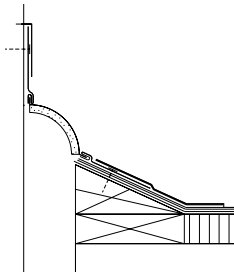
For application to curb and wall

Style CF-EJ

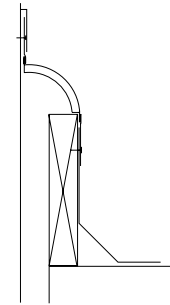


For application to cant and wall

Style EJ



Style EJ



**Vertical Distance Requirement  
in Roof to Wall Installations  
(for all styles)**

**Mounting**

Bellows Width	Height "A"
4"*	2 1/2"
6"*	3 3/4"
8"*	5"
10"*	6 1/4"
12"*	7 1/2"
14"***	8 3/4"
16"***	10 1/4"
18"***	11 1/2"
20"***	12 3/4"
24"***	15 1/4"

\*Standard bellows width.

\*\*Made to order.

For standard size selection see chart on page 5.

**PVC EJ/WC Expand-O-Flash®**

Expand-O-Flash Style PVC EJ/WC consists of foam supported bellows with integrally attached non-metallic nailing flanges over which is attached a reinforced PVC cover of sufficient width to weld the entire joint assembly to the PVC membrane.

Nailing flanges are 1 3/8" (35 mm) rigid PVC welded to flexible PVC strips which in turn are welded to the reinforced PVC cover membrane. Cover membrane is available in white 80 mil (2.0 mm) reinforced PVC membrane. The membrane is designed to cover the curbs or cants and extend 5" (127 mm) onto the roof surface to be welded to the PVC roof membrane.

