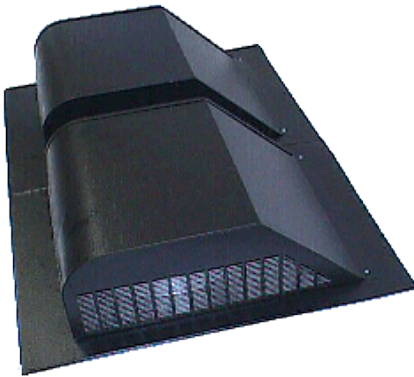


700 SERIES—

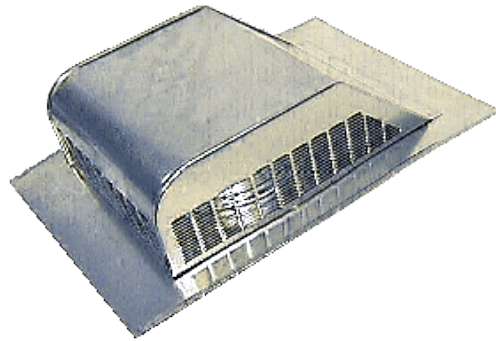
- THREE SIDES LOUVERED FOR GREATER AIR FLOW.
- LARGE NAILING FLANGE.
- ALL-ALUMINUM RUST-FREE CONSTRUCTION.

- FITS ALL PITCHED ROOFS.
- WEATHER-TIGHT SEAMED COLLAR.
- HIGH PROFILE FOR INCREASED WEATHER PROTECTION AND CIRCULATION.
- PREVENTS ROOF DISCOLORATION.
- BIRD-PROOF.
- EMBOSSED PAINTED FINISH FOR ADDED STRENGTH, EXTENDED PAINT LIFE, DURABILITY, AND BLENDING APPEARANCE WITH SHINGLES.
- AVAILABLE IN BLACK, BROWN, WEATHERED BRONZE, WHITE AND MILL FINISHES.
- 700 HAS NEOPRENE DAMPER FOR USE AS KITCHEN/BATHROOM EXHAUST VENT.
- 750E is a 750 with an extended flange size.
- 730, 750 & 770 CSA APPROVAL #83070
- 750 DADE COUNTY Approved – Acceptance #98-0522.05
- NOTE: These are exhaust louvers.



770-D

- TWO (2) 770s ARE SEAMED TOGETHER TO FORM THE 770-D.



750-G—

- HEAVY DUTY GALVANIZED STEEL CONSTRUCTION.
- AVAILABLE IN BLACK, BROWN, WHITE, And WEATHERED BRONZED ELECTROSTATICALLY APPLIED BAKED ENAMEL FINISHES, AS WELL AS MILL FINISH.

<u>Model No.</u>	<u>Overall Size</u>	<u>Opening Size</u>	<u>Net Free Area</u>	<u>Square Feet Louver Ventilates</u>	<u>No. Per Carton</u>	<u>Weight Per Carton</u>
730	12 13/16" x 17 1/4" x 4"	6 1/4"	30 Sq. In.	63	6	7 1/4 lbs.
*750	16" x 20 5/16" x 5"	8"	50 Sq. In.	104	6	11 1/4 lbs.
750-Galv	14 7/16" x 20 5/16" x 5"	8"	50 Sq. In.	104	6	21 3/4 lbs.
750E	23" x 27 1/4" x 15"	8"	50 Sq. In.	104	6	15 1/2 lbs.
770	16 5/8" x 22 3/8" x 6"	9 1/2"	70 Sq. In.	146	6	13 1/2 lbs.
770-D	32 1/2" x 22 3/8" x 6"	Two 9 1/2"	140 Sq. In.	292	4	17 1/4 lbs.
700	16" x 20 5/16" x 5"	8"	Dampered	Dampered	6	11 3/4 lbs.

* Denotes Most Popular Models.