

EPDM Systems



Design Flexibility

Lightweight

Attractive

Simple to Install

Economical

Fully Adhered

Mechanically Attached

Ballasted

www.mulehide.com

Technical Support

1-800-786-1492



Through ongoing interchange of experiences with architects, specifiers, structural engineers, and installers, Mule-Hide ensures our team is on top of the latest roofing requirements and solutions.

We provide total roofing systems and work with you to ensure compatibility and related performance of interfacing products. This includes assistance in membrane selection and determining the best flashing materials and techniques to ensure a watertight roof.

That's why Mule-Hide is the name trusted in roofing since 1906 and the right choice for a broad range of roofing installations. Time-proven Mule-Hide Systems are simple and economical to install, yet meet the stringent demands of today's commercial, industrial, and institutional buildings with an eye on the future.

**EPDM
MEMBRANE
SAMPLE**

"The name trusted in roofing since 1906"

EPDM Systems

The EPDM Systems you need from the people you trust. Mule-Hide membranes are manufactured under strict quality control. A wide range of sheet sizes, lengths, and membrane thicknesses, Mule-Hide proven systems are available through one of the largest distribution networks - nationwide and in Canada.

Non-Reinforced Black EPDM .045

- The most economical single-ply membrane
- Ideal for ballasted systems

Non-Reinforced Black EPDM .060

- Ideal for fully adhered systems

Reinforced Black EPDM .045 & .060

- Reinforced with tough polyester fabric for superior fatigue, tear & puncture resistance
- Ideal for mechanically attached systems

White-on-Black Non-Reinforced EPDM .060

- Reflects the sunlight & cools the building interior - leading to lower BTU usage and energy costs
- Fully adhered application is required
CRRC® (Cool Roof Rating Council) listed

Complete line of EPDM Accessories:

- **Fast Roofs with MH Acrylic Water Base Bonding Adhesive**
 - Longest history in the industry - proven, trusted performance with no solvent fumes
 - Single-side, wet application requires fewer workers
 - Easier sheet positioning
- **Solvent Bonding, Splice, and Single Seal Adhesives**
- **Seam Cleaners, Tapes, Tape Primers, Caulks**
- **Reinforced Membrane Strips, Flashings**
- **Pipe Boots, Pre-fabricated Accessories**
- **Anchoring Accessories, All-Purpose Bar, Fasteners, Plates**
- **Polyisocyanurate Insulation**

Mule-Hide offers architects and their clients new or retrofit systems that remain stable and functional in the toughest situations a roof faces.

Contractors want:

- **Fast Roofs** - lower labor costs, accept more jobs.
- **Crew retention** - not hot work, easy to learn.
- **Product availability** - over 325 distributor locations.

Building Owners want:

- **Durable roof** - fewer seams, excellent wind resistance.
- **Installed cost value** - tough, affordable, and fast.
- **Maximum roof lifecycle** - long life and low maintenance.
- **Minimal disruption** - installs fast, no open flames.
- **Manufacturer Warranties** - System or Membrane-Only.



"The name trusted in roofing since 1906"

MULE-HIDE PRODUCTS Co., Inc.

1195 Prince Hall Drive Phone (608)365-3111 PO BOX 1057
Beloit, WI 53511 Fax (608)365-7852 Beloit, WI 53512-1057



When you need assistance with product selection and specifications, engineered drawings, or field assistance with installation details, you can rely on Mule-Hide.

Individualized Assistance

Attention to Detail

Project Level Technical Assistance

Alternative Methods of Installation

Call **1-800-786-1492**

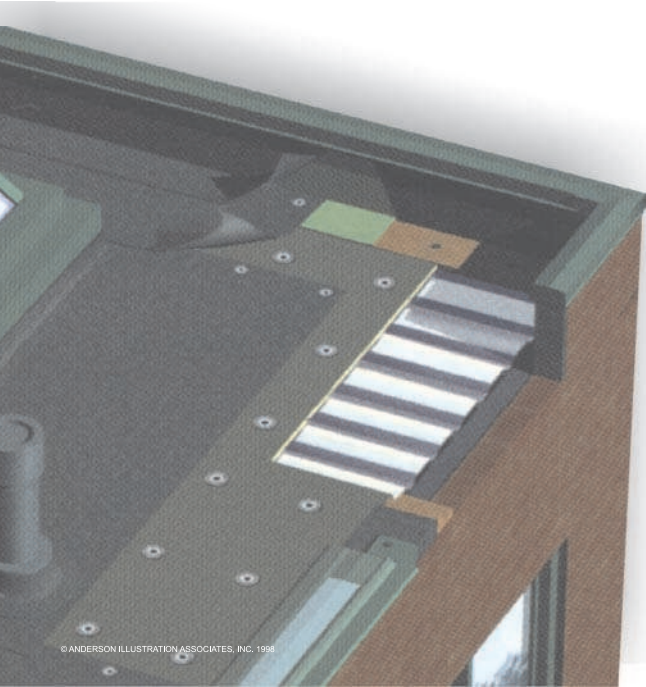
We're ready to assist in design options for your clients

www.mulehide.com

Visit our website for downloadable product specifications.



This information herein is based upon data and knowledge considered to be true and accurate and is provided for the specifier's consideration, investigation and verification. However, Mule-Hide Products Co., Inc. does not warrant any results to be obtained. Statements concerning possible use of Mule-Hide products are made without knowledge of your particular roof and such an application may not be fit for your particular purpose. MULE-HIDE DISCLAIMS ALL WARRANTIES, INCLUDING THE IMPLIED WARRANTY OF MERCHANTABILITY AND FITNESS FOR A PARTICULAR PURPOSE, except written warranties attached to Mule-Hide products and written warranties signed by an officer of Mule-Hide.



© ANDERSON ILLUSTRATION ASSOCIATES, INC. 1998

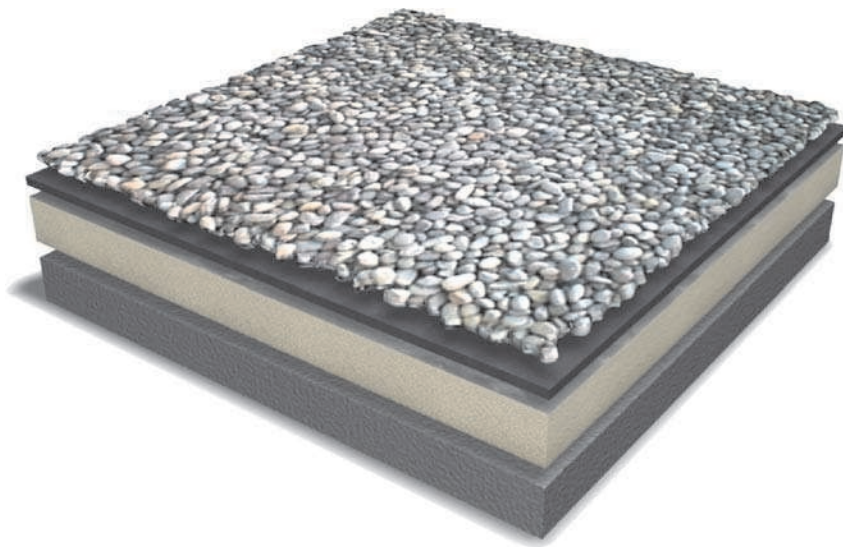
MULE-HIDE EPDM System Benefits

Strength - EPDM (Ethylene Propylene Diene Monomer) is a high tensile strength, single-ply membrane ideal for long-term watertight integrity. EPDM is lightweight, making it ideal for new construction and retrofit installations without adding excessive weight to the roof deck. Meets or exceeds ASTM standards.

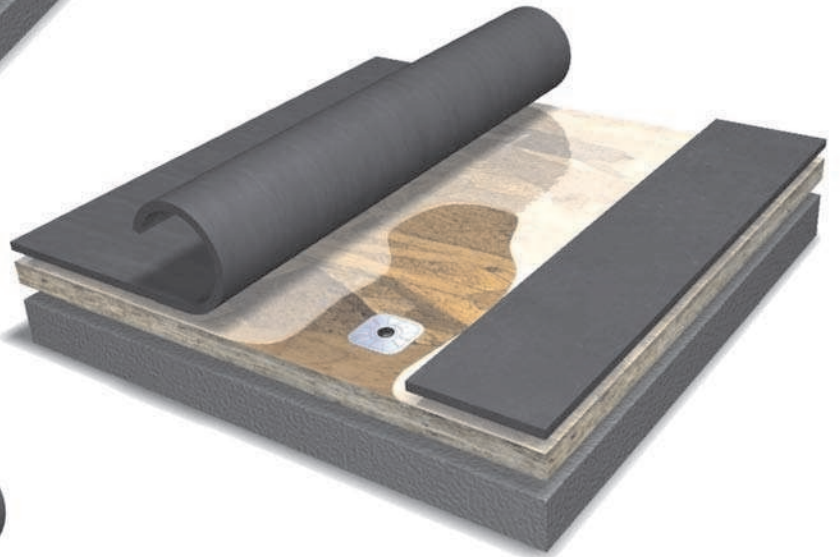
Flexibility - The membrane remains flexible in hot and cold temperatures so it will not split or crack. EPDM stretches to 425% so structural movement has no effect on integrity.

Long Lifecycle - It provides excellent resistance to ozone and UV and can handle the coldest winters or the desert heat. The high tensile strength of Mule-Hide EPDM stands up to normal rooftop traffic and resists punctures or tears.

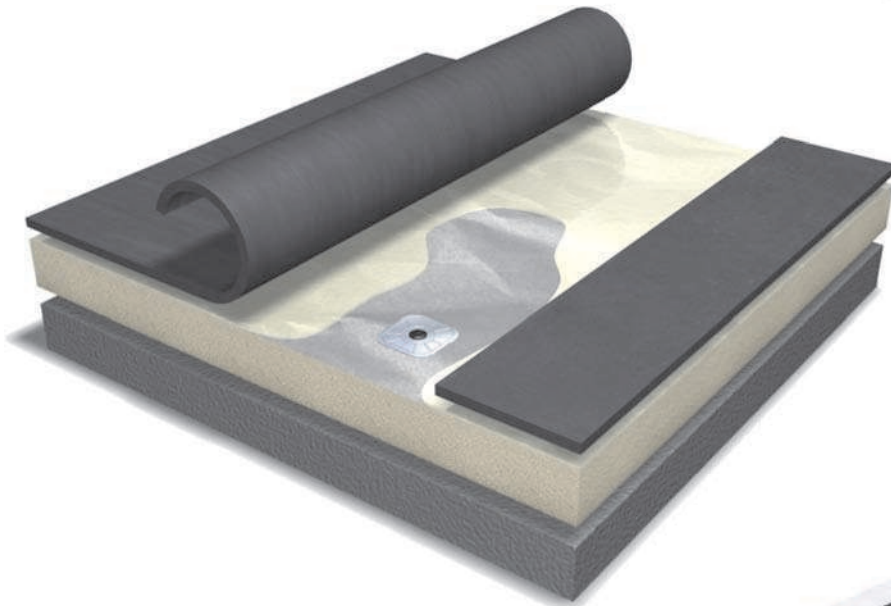
System Options:



**EPDM
Ballasted**

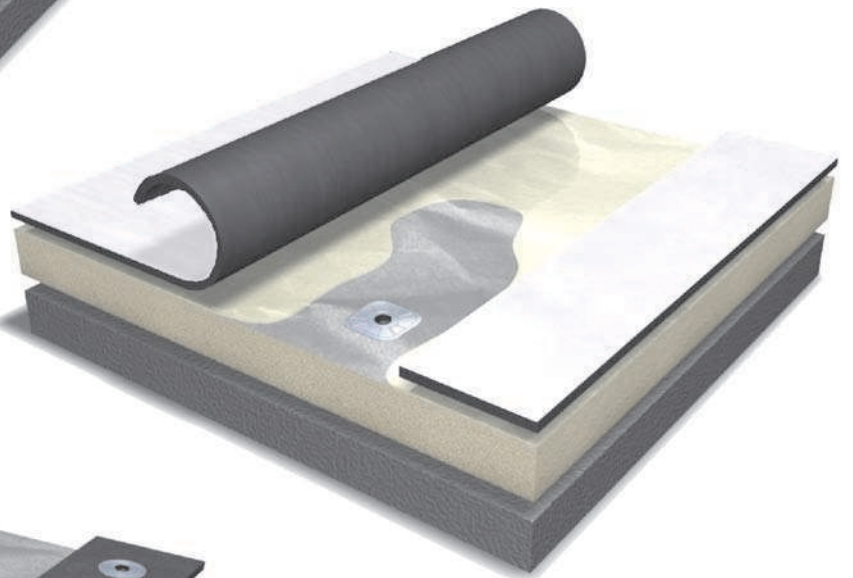


**EPDM
Fully Adhered with
Water Base Bonding Adhesive**

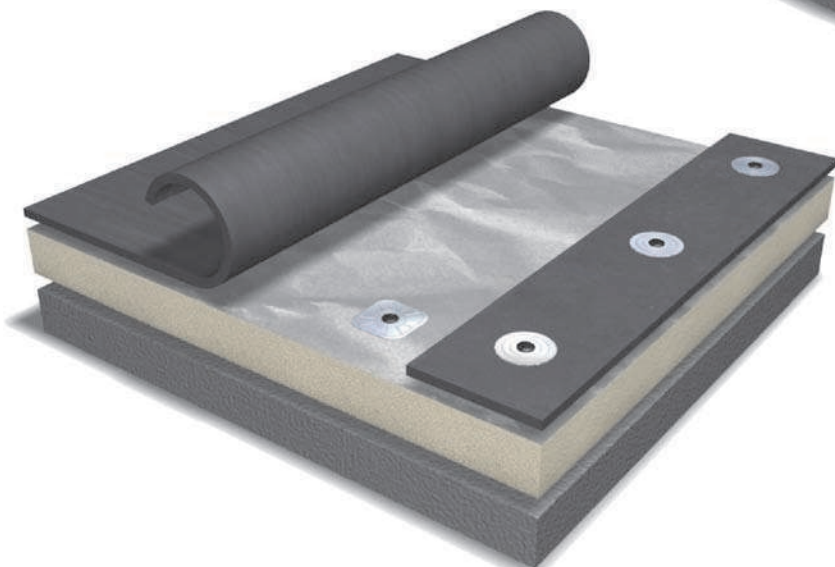


**EPDM
Fully Adhered with
Solvent Base Adhesive**

**White-On-Black EPDM
Fully Adhered with
Solvent Base Adhesive**



**EPDM
Mechanically Attached**



White-On-Black EPDM
is CRRC® listed.



Mule-Hide Systems maximize labor savings & roof lifecycle

- Mule-Hide EPDM membranes can boast years of proven performance, covering a wide range of low-slope roofing applications, with systems for ballasted, mechanically attached and fully adhered.
- Our Fully Adhered System using Mule-Hide Acrylic Water Base Bonding Adhesive is one of the most specified. Its fast installation means maximized installed cost value for contractors and minimal disruption for building owners. Plus, low VOCs, no fumes, no open flames - environmentally friendly.
- UL & FM listed assemblies available.
- Our Fully Adhered System using solvent based adhesive is ideally suited for irregular building configurations as well as steeply sloped commercial roofs.
- Simple & versatile Mule-Hide Laminated Tapes make installation faster and easier. Field seams are long lasting and watertight. Sealing mechanical attachments has never been easier or more weather resistant.
- Mule-Hide thrives on handling any size project, from the smallest to the largest and most complex. Our Field Reps are prepared to “walk the roof” to determine solutions on complex retrofit projects.



Extensive Warranty Program

Mule-Hide offers Membrane Warranties, Standard System, and Premium System Warranties. All projects requesting a Standard or Premium System Warranty are inspected by a Mule-Hide representative prior to the issuance of the warranty. Our prompt response and proficient warranty service has resulted in one of the lowest warranty claim records in the industry.

Warranty Eligible Contractor Program

Mule-Hide combines time-proven systems with contractor training seminars, on-the-job training, jobsite inspections, and technical support to our warranty eligible contractors.

“The name trusted in roofing since 1906”