



The National Roofing Contractors Association (NRCA) is providing construction details as examples of quality installations for the specific roof or waterproofing material or system within BuildSite's Product Category listing in which you are searching.

The roof system construction details are from The NRCA Roofing Manual series, which was launched in 2007. The volumes in the series are *The NRCA Roofing Manual: Membrane Roof Systems—2007*, *The NRCA Roofing Manual: Metal Panel and SPF Roof Systems—2008*, *The NRCA Roofing Manual: Steep-slope Roof Systems—2009* and *The NRCA Roofing Manual: Sheet Metal Flashing, Moisture Control and Reroofing—2010*.

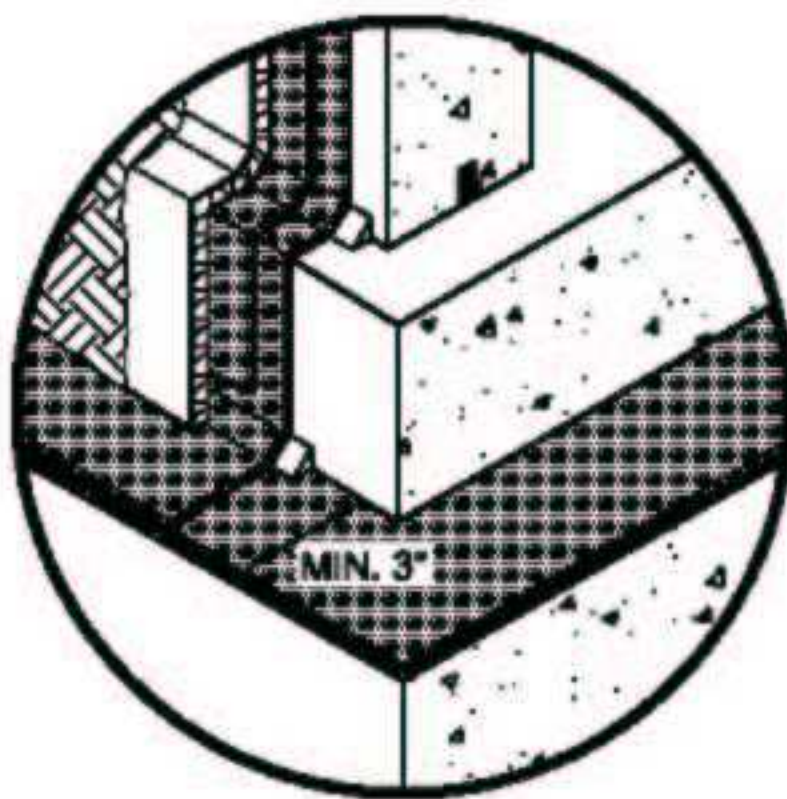
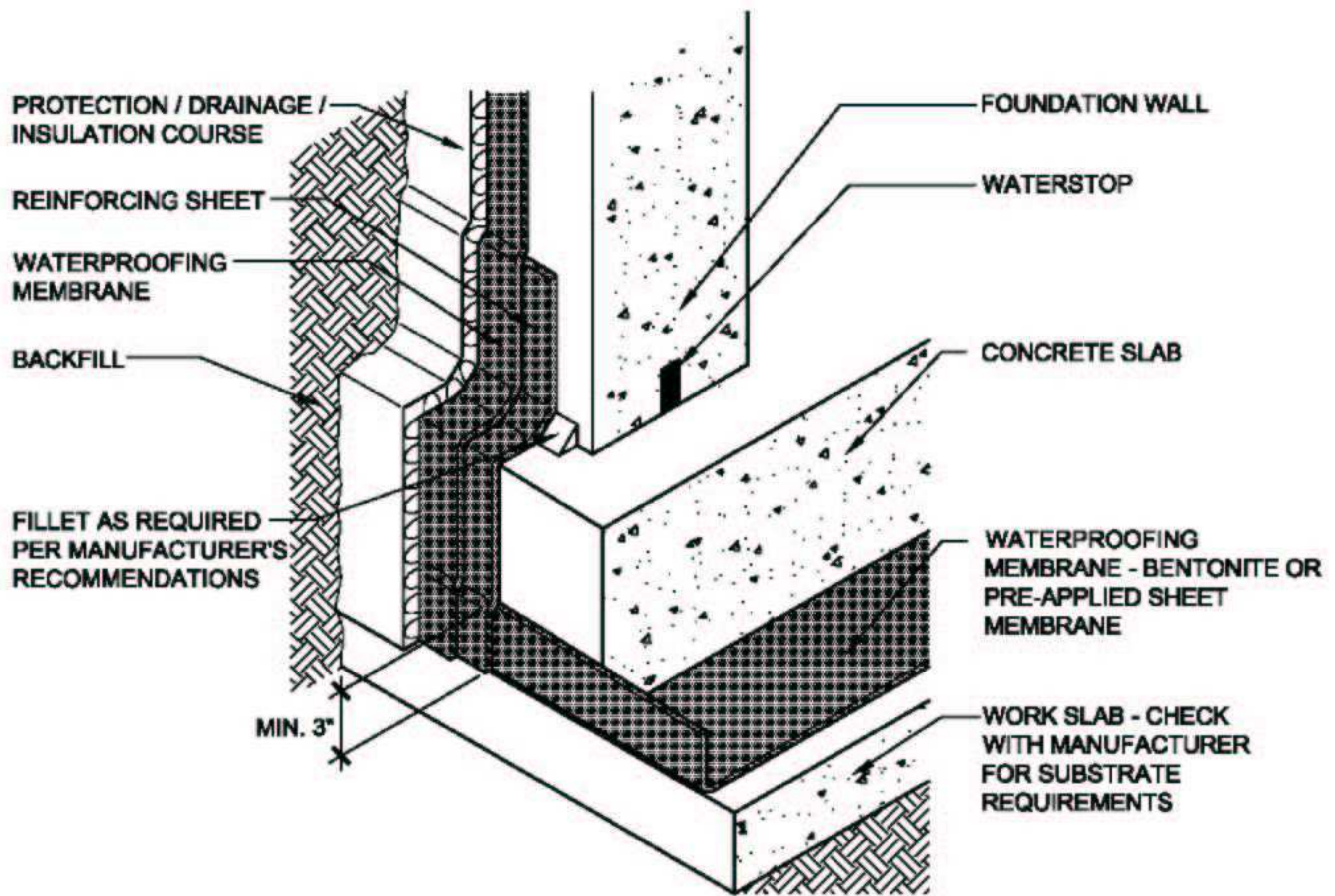
The waterproofing details are from *The NRCA Waterproofing Manual, 2005 Edition*. In publishing The NRCA Roofing Manual series, NRCA made the decision to no longer include the waterproofing section that was previously included in *The NRCA Roofing and Waterproofing Manual, Fifth Edition* (2001). Instead, the waterproofing section was updated and issued as a separate publication.

Additional information about roofing and waterproofing can be found on NRCA's Web site, www.nrca.net, or by calling NRCA at (847) 299-9070.

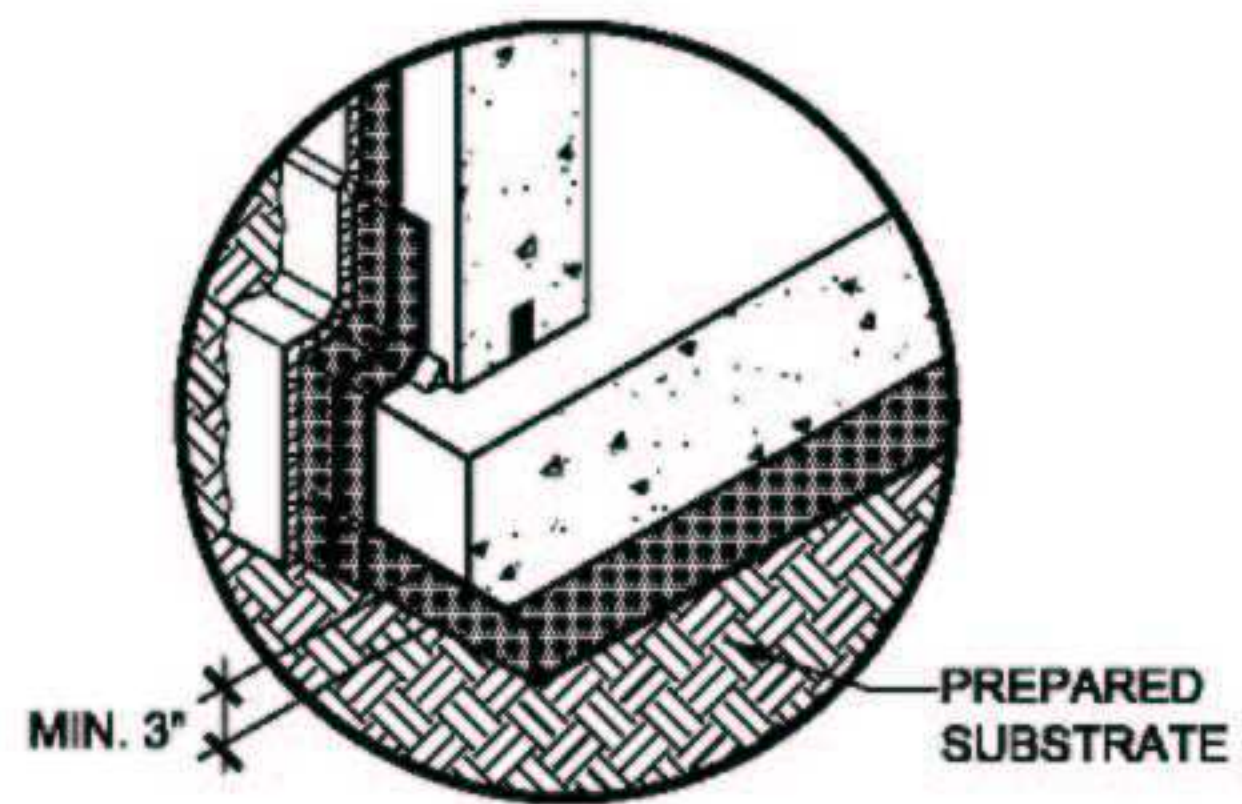
National Roofing Contractors Association
10255 W. Higgins Road, Suite 600
Rosemont, IL 60018
(847) 299-9070
Fax: (847) 299-1183
www.nrca.net
www.professionalroofing.net

NRCA Construction Details—Waterproofing Systems

WP-2	Foundation Wall and Slab Below Grade
WP-10	Waterproofing Membrane Termination at Grade



ALTERNATE SLAB EDGE FLASHING



ALTERNATE SUBSTRATE

NOTES:

1. DRAINAGE SYSTEM NOT SHOWN.
2. SEE INTRODUCTION TO THE WATERPROOFING CONSTRUCTION DETAILS FOR ADDITIONAL INFORMATION.