



The National Roofing Contractors Association (NRCA) is providing construction details as examples of quality installations for the specific roof or waterproofing material or system within BuildSite's Product Category listing in which you are searching.

The roof system construction details are from The NRCA Roofing Manual series, which was launched in 2007. The volumes in the series are *The NRCA Roofing Manual: Membrane Roof Systems—2007*, *The NRCA Roofing Manual: Metal Panel and SPF Roof Systems—2008*, *The NRCA Roofing Manual: Steep-slope Roof Systems—2009* and *The NRCA Roofing Manual: Sheet Metal Flashing, Moisture Control and Reroofing—2010*.

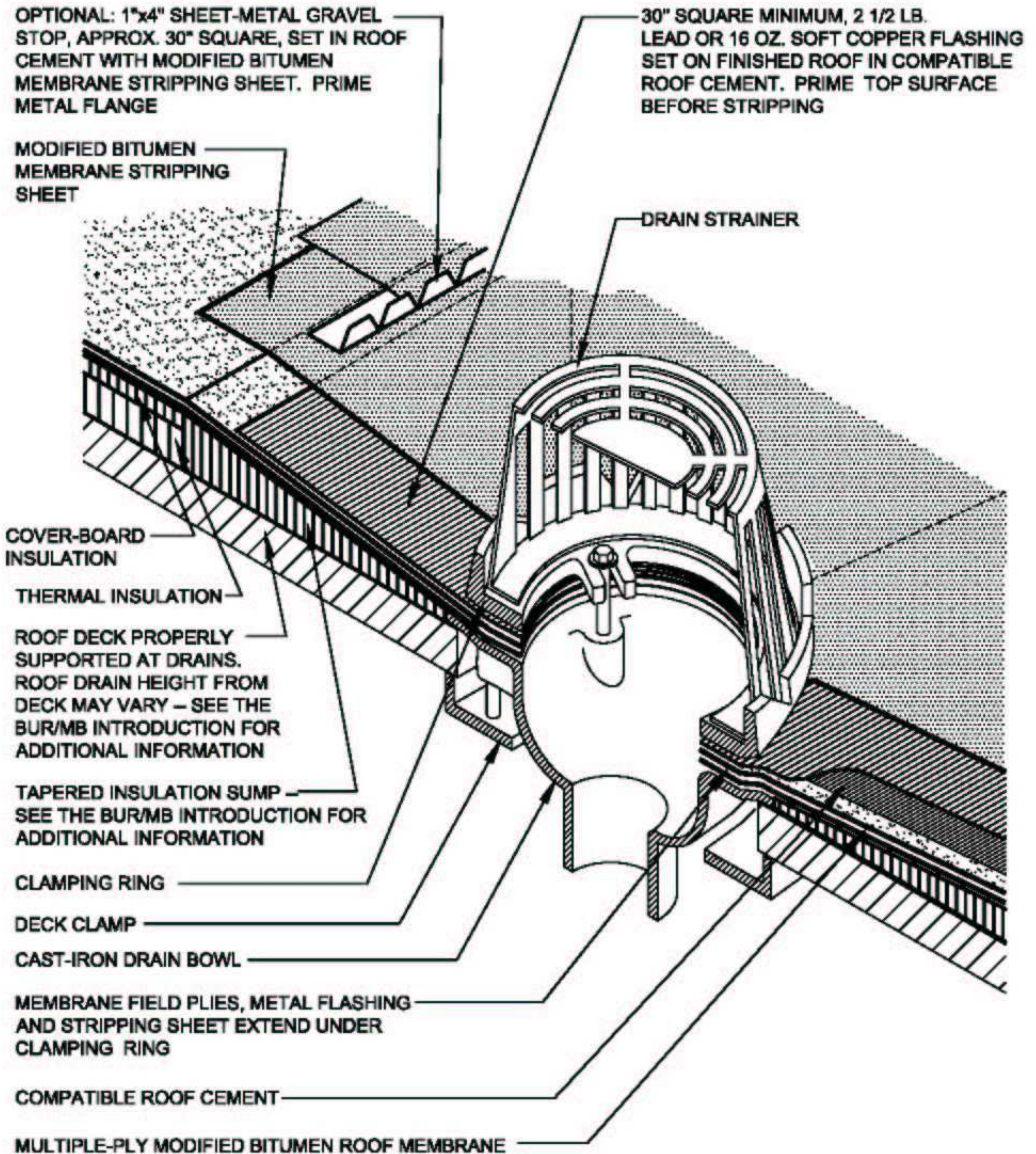
The waterproofing details are from *The NRCA Waterproofing Manual, 2005 Edition*. In publishing The NRCA Roofing Manual series, NRCA made the decision to no longer include the waterproofing section that was previously included in *The NRCA Roofing and Waterproofing Manual, Fifth Edition* (2001). Instead, the waterproofing section was updated and issued as a separate publication.

Additional information about roofing and waterproofing can be found on NRCA's Web site, [www.nrca.net](http://www.nrca.net), or by calling NRCA at (847) 299-9070.

National Roofing Contractors Association  
10255 W. Higgins Road, Suite 600  
Rosemont, IL 60018  
(847) 299-9070  
Fax: (847) 299-1183  
[www.nrca.net](http://www.nrca.net)  
[www.professionalroofing.net](http://www.professionalroofing.net)

#### NRCA Construction Details—Polymer-modified Bitumen Roof Systems

MB-1	Mop- or Cold-applied Base Flashing At Parapet Wall With Metal Cap (Coping)
MB-3	Embedded Edge Metal Flashing (Gravel Stop)
MB-4	Base Flashing With Surface-mounted Counterflashing At Concrete Wall
MB-19	Plumbing Vent
MB-22	Roof Drain



**NOTES:**

1. THE USE OF A METAL DECK SUMP PAN IS NOT RECOMMENDED. HOWEVER, DRAIN RECEIVER/BEARING PLATES ARE APPLICABLE WITH SOME PROJECTS.
2. THE DESIGNER SHOULD CONSIDER INSULATING THE DRAIN COMPONENTS BELOW THE DECK TO PREVENT POTENTIAL CONDENSATION.
3. MEMBRANE SEAMS SHOULD NOT INTERSECT DRAIN CLAMPING RING.
4. REFER TO THE BUR/MB INTRODUCTION FOR ADDITIONAL INFORMATION.