

EDGEmaster™

ROOFING METALS PHILLIPS



PHILLIPS
MANUFACTURING CO.
Engineered to Perform

PHILLIPSmfg.com
800.822.5055

PHILLIPS

MANUFACTURING CO.

Engineered to Perform

Phillips Manufacturing Company produces roofing metals, drywall framing components, stucco accessories and other finishing products. Established in 1955, we are a privately owned company proudly serving the industry with our diverse products through our many distribution channels.

Our Mission

"Lead the industry in delivering innovative products and services that add value to our customers and build their long-term success."

Our Guarantee

Phillips stands behind our product quality 100%. Our material and fabrication standards are the highest in the industry. Phillips products are manufactured by an organization devoted to customer satisfaction.

THE PHILLIPS



ADVANTAGE

Innovation and Quality: Phillips engineering, research and development, and production teams are driven towards value added products and services.

Product Value: Phillips delivers innovative products with distinctive features and benefits at competitive prices for a strong competitive advantage.

Service: Phillips employs highly qualified and knowledgeable sales and sales support teams to ensure excellent customer service. We provide efficient national distribution with manufacturing and operating space in excess of 400,000 square feet.

Relationships: We understand the importance of the customer and recognize that success is achieved through partnerships and loyalty.



Headquarters and Plant in Omaha, Nebraska



Office and Plant in Niles, Ohio



Distribution Warehouse in Phoenix, Arizona

Table of Contents

Roof Edge Metal

- Style D Roof Edge 4
- Roof Edge..... 4
- Gutter Apron 5
- Eave Drip..... 5

Roof Metal Flashing

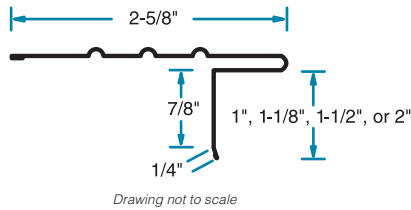
- Roll Flashing..... 6
- W-Valley..... 6
- Tile Pan..... 6
- Wall Flashing 6
- Step Flashing..... 7
- Flat Flashing Shingles 7
- Z-Flashing..... 7



PART NUMBER: DREH

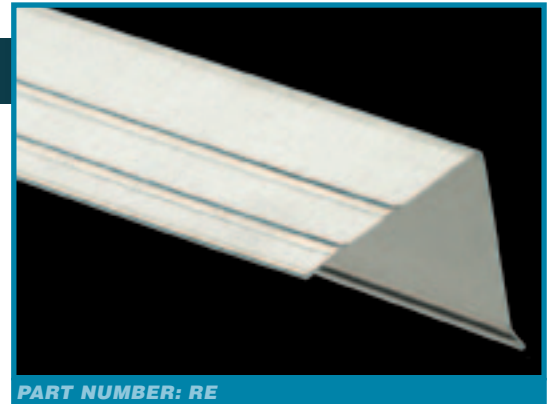
STYLE D ROOF EDGE

Phillips EDGEmaster™ Style D Roof Edge is designed to protect and cover the exposed edge of the roof line. This product helps prevent water backup under the shingles and protects roofing from water damage along the entire eave. This product features hemmed edges for easy installation. Packaging is 25 pieces per carton and 10' is standard length.

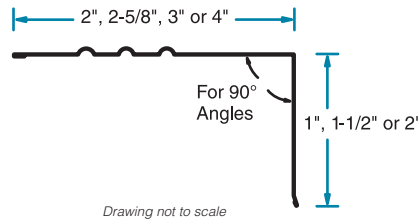


ROOF EDGE

Phillips EDGEmaster™ Roof Edge is designed to protect and cover the exposed edge of the roof line. This product helps prevent water backup under the shingles and protects roofing from water damage along the entire eave. Available in a variety of sizes; visit www.phillipsmfg.com for a listing of part numbers. This product features hemmed edges for easy installation. Packaging is 25 pieces per carton and 10' is standard length.



PART NUMBER: RE



COLOR GUIDE

Black

Galvanized

Bronze

Brown

White

Actual colors may vary

"Engineered to Perform"

Phillips Roofing Metals:

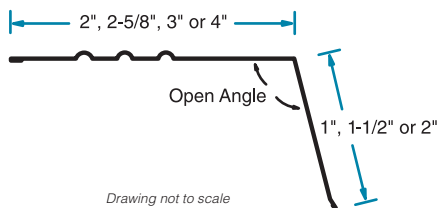
- Wide selection of colors available
- Produced with the highest material and fabrication standards
- Many products feature hemmed edges
- Made with high quality steel for superior performance



PART NUMBER: GA

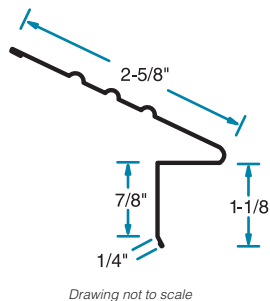
GUTTER APRON

Phillips EDGEmaster™ Gutter Apron is used to direct water into the gutter system by directing rain water run-off to drip away from fascia. This product is installed over the roof edge and extends into the gutter. Available in a variety of sizes; visit www.phillipsmfg.com for a listing of part numbers. This product features hemmed edges for easy installation. Packaging is 25 pieces per carton and 10' is standard length.



EAVE DRIP

Phillips EDGEmaster™ Eave Drip is designed to direct water into the gutter system by directing rain water run-off to drip away from fascia. This product is installed over the roof edge and extends into the gutter. This product features hemmed edges for easy installation. Packaging is 25 pieces per carton and 10' is standard length.



PART NUMBER: 500DGA

We are continuously expanding our roofing metals product line. Visit PHILLIPSmfg.com or call 800.822.5055 for details.



ROOF FLASHING

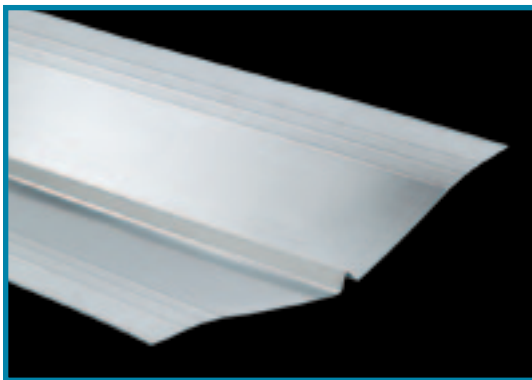


ROLL FLASHING

Phillips EDGEmaster™ Roll Flashing is used for custom flashing and do-it-yourself projects. This product adds a customized look to any dormer or flashing piece. Available in a variety of colors (see color guide). Up to 24" width available. Standard widths are 24" (RF2400), 20" (RF2000), 18" (RF1800), 16" (RF1600), 14" (RF1400), 12" (RF1200), 10" (RF1000), 8" (RF800), 6" (RF600) and 4" (RF400). 10', 25' and 50' length rolls.



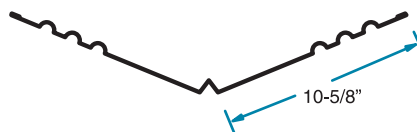
PART NUMBER: SEE TEXT



PART NUMBER: SEE TEXT

W-VALLEY

Phillips EDGEmaster™ W-Valley is used in the roof valley area to channel water down into the gutters. This product features a small ridge in the middle to prevent run-off rain from running down one side of the roof and splashing up under shingles on the opposing side. This product is available in 24" (WV24) as shown below, 20" (WV20) and 18" (WV18).

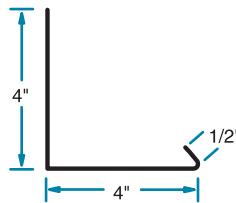


Drawing not to scale

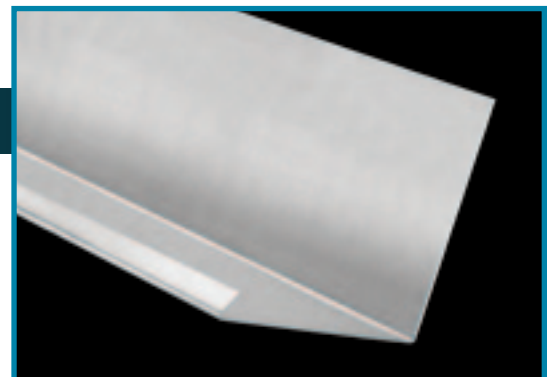
24" shown; other sizes available

TILE PAN

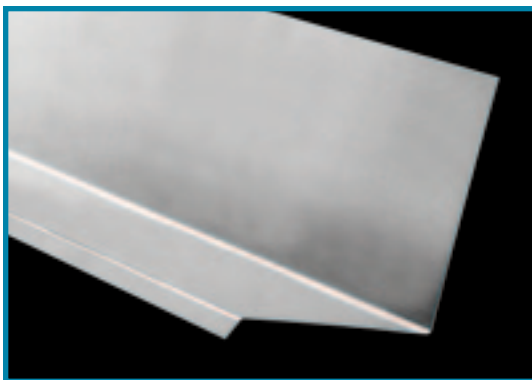
Phillips EDGEmaster™ Tile Pan works great as flashing around chimneys and other applications. Available in a variety of colors (see color guide). Packaging is 10 pieces per bundle.



Drawing not to scale



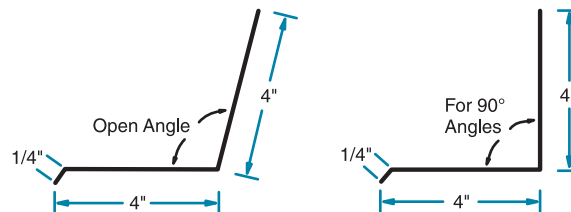
PART NUMBER: TP4X4



PART NUMBER: SEE TEXT

WALL FLASHING

Phillips EDGEmaster™ Wall Flashing is designed to prevent the entry of water into the wall. Wall flashing is typically found at interruptions in the wall, such as windows and points of structural support. This product works great to prevent top edge of window



Drawing not to scale

Drawing not to scale

or door openings from water infiltration. Wall Flashing is available in open angle (WF120) and regular (WF90-for 90° angles). Available in a variety of sizes and colors (see color guide). Packaging is 10 pieces per bundle.

COLOR GUIDE

Black

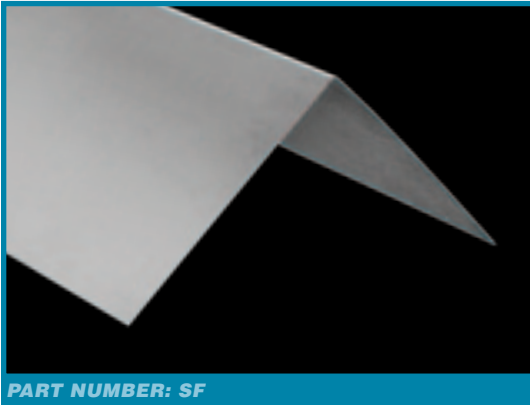
Galvanized

Bronze

Brown

White

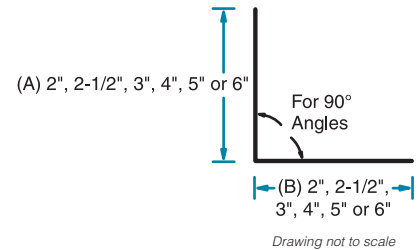
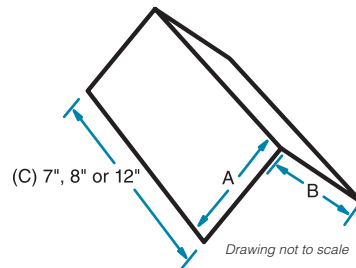
Actual colors may vary



PART NUMBER: SF

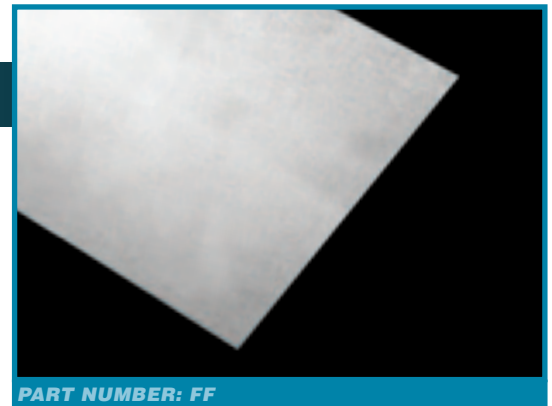
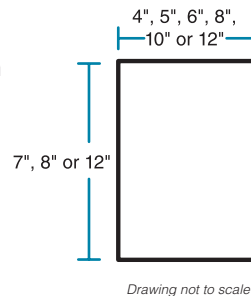
STEP FLASHING

Phillips EDGEmaster™ Step Flashing is used on the side of a shingle when it meets a vertical termination such as a wall, chimney or other termination. The product helps prevent water from entering between the shingle and the termination. Step Flashing is pre-bent for easy installation. Available in a variety of sizes and colors (see color guide). Packaging is 10 pieces per bundle and 100 per carton.

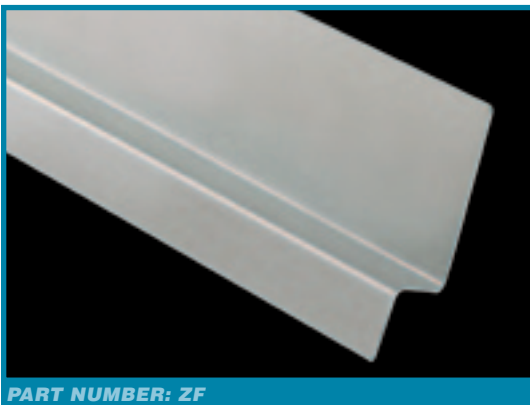


FLAT FLASHING SHINGLES

Phillips EDGEmaster™ Flat Flashing Shingles are utility roofing metal products used in a variety of flashing applications. This product can be bent on the job to fit custom or fill in flashing requirements. Flat Flashing Shingles are available in a variety of sizes and colors (see color guide). Packaging is 10 pieces per bundle.



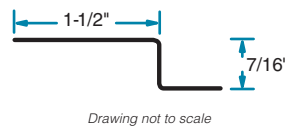
PART NUMBER: FF



PART NUMBER: ZF

Z-FLASHING

Phillips EDGEmaster™ Z-Flashing is commonly used for preventing water penetration behind exterior siding and other residential applications. Available in a variety of colors (see color guide). 7/16" product is shown; ask your sales representative for details on other sizes offered. Packaging is 10 pieces per bundle.



7/16" shown; other sizes available

We are continuously expanding our roofing metals product line. Visit PHILLIPSmfg.com or call 800.822.5055 for details.





PHILLIPSmfg.com
800.822.5055