

# **PHILLIPS**

**MANUFACTURING CO.**

**Engineered to Perform**

**Featuring  
NEW and IMPROVED  
Products**



**METAL BEADS & TRIMS**



**VINYL BEADS & TRIMS**



**PAPER FACED FLEXIBLE CORNER TRIM**



**PAPER FACED BEADS & TRIMS**



**METAL CHANNELS & INTERIOR FRAMING**



**STRUCTURAL FRAMING**



**I-STUDS & FIRE RATED ASSEMBLIES**



**STUCCO, VENEER & PLASTER BEADS & TRIMS**



**METAL LATH**



**ROOFING METALS**

**[PHILLIPSmfg.com](http://PHILLIPSmfg.com)  
800.822.5055**



## **About Us**

Phillips Manufacturing Co. is a national single source manufacturer for all drywall finishing accessories including beads, trims, channels and framing components, as well as stucco accessories and roofing metals. We stand above the competition as specialists in beads, trims and accessories focusing on continual quality improvements and innovations providing the highest quality products. We are a privately owned and operated company proudly serving the entire nation with our extensive product line through our many distribution channels.

## **Our Mission**

*"Lead the industry in delivering innovative products and services that add value to our customers and build their long-term success."*

## **Our Guarantee**

Phillips stands behind our product quality 100%. Our material and fabrication standards are the highest in the industry. Phillips products are manufactured by an organization devoted to customer satisfaction.



**Headquarters and Plant in Omaha, Nebraska**

# **THE PHILLIPS**



# **ADVANTAGE**

**Innovation and Quality:** Phillips engineering, research and development, and production teams are driven towards value added products and services.

**Brand Loyalty:** Our national presence and well-recognized Phillips brand names are known throughout the industry.

**Product Value:** Phillips delivers innovative products with distinct features and benefits at competitive prices for a strong competitive advantage.

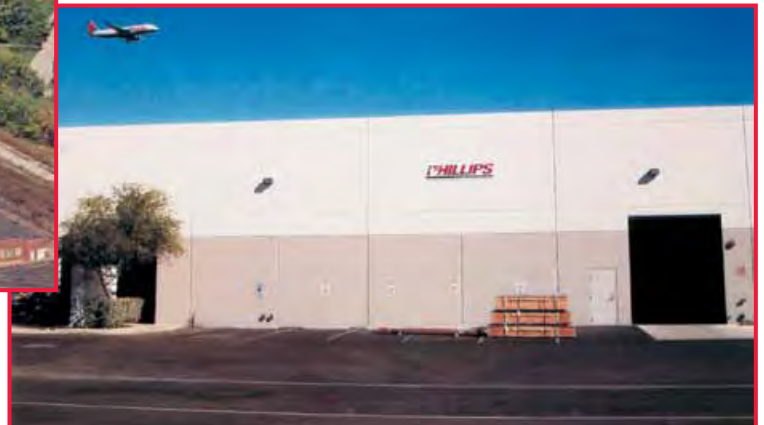
**Service:** Phillips employs highly qualified and knowledgeable sales and sales support teams to ensure excellent customer service. We provide efficient national distribution with manufacturing and operating space in excess of 400,000 square feet.

**Relationships:** We understand the importance of the customer and recognize that success is achieved through partnerships and loyalty.



Office and Plant in Niles, Ohio

Distribution Warehouse in Phoenix, Arizona



**ALL PHILLIPS PRODUCTS ARE MADE IN THE USA**



## **Maintaining Excellence**

Phillips products are manufactured by the most highly developed processes available, using in-house expertise as our most valuable resource.

Our experienced technicians and engineers are engaged in continuous analysis of our manufacturing and quality control processes to ensure maximum quality standards. The feedback received from our valued customers is of immeasurable help in this on-going effort.

Customer service is an important reason why customers call on us time and time again to meet the needs of their construction project. We respond quickly and effectively to our customers' requests, regardless of the nature.



# Table of Contents

## **NEW and IMPROVED Products**

### **NEW**

Vinyl MAX-Flex®  
L-Trim Archway  
pg. 20

gripSTIK®  
Flat L-Tear Strip  
pg. 21

RollPRO™ Paper Faced  
Flexible Corner Trim  
pg. 22

kwikSTIK®  
Nail-On Square Bead  
pg. 29

EDGEmaster™  
Roofing Metals  
pgs. 49-51

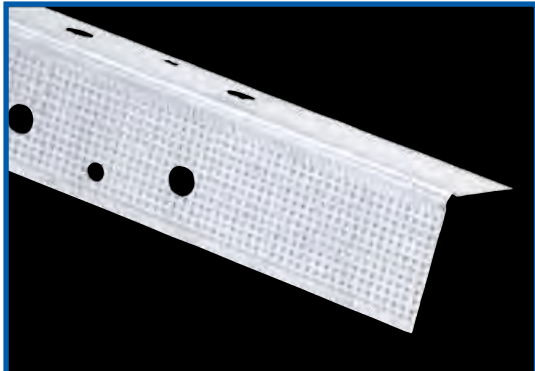
### **IMPROVED**

MAX-Flex® Bullnose  
Vinyl Archway  
pg.15

093 E-Z Strip®  
Expansion Joint  
pg.17

<b>Metal Beads &amp; Trims .....</b>	<b>6</b>
Metal Corner Beads.....	6
Metal Trims and Finishing Products .....	11
<b>Vinyl Beads &amp; Trims.....</b>	<b>13</b>
Vinyl Corner Beads.....	13
Bullnose Corner and Transition Caps .....	18
Vinyl Trims and Finishing Products .....	20
<b>Paper Faced Flexible Corner Trim .....</b>	<b>22</b>
<b>Paper Faced Beads &amp; Trims.....</b>	<b>23</b>
Paper Faced Corner Beads.....	23
Paper Faced Trims .....	30
<b>Metal Channels &amp; Interior Framing .....</b>	<b>31</b>
Drywall Metal Framing .....	31
Channels .....	32
Flat Strap or Flat Stock .....	36
<b>Structural Framing.....</b>	<b>37</b>
Structural Studs and Tracks .....	37
Structural Accessories .....	38
<b>I-Studs &amp; Fire Rated Assemblies.....</b>	<b>39</b>
Shaftwall/Stairwell .....	39
Area Separation Wall .....	40
<b>Stucco, Veneer &amp; Plaster Beads &amp; Trims.....</b>	<b>41</b>
Stucco and Plaster Casing Beads .....	41
Stucco and Plaster Control Joints .....	42
Veneer Beads and Trims .....	44
Stucco Screeds and Exterior Finishing Products .....	46
<b>Metal Lath .....</b>	<b>47</b>
Metal Lath Accessories.....	48
<b>Roofing Metals .....</b>	<b>49</b>
<b>Index .....</b>	<b>52</b>
<b>ASTM Specifications .....</b>	<b>54</b>
<b>LEED® Certification.....</b>	<b>55</b>

Phillips Unmatched Selection of Corner Bead



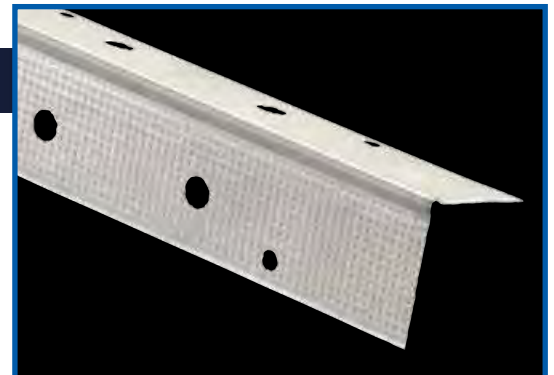
PART NUMBER: CBRHDG

EVERLAST® CORNER BEAD

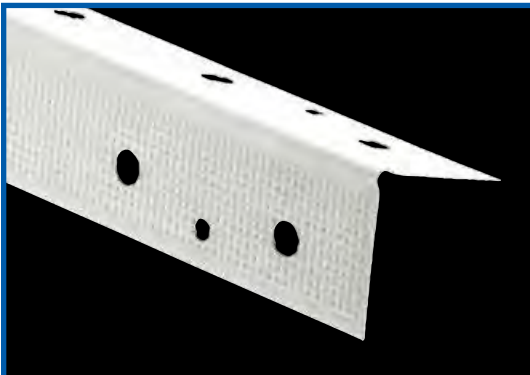
Phillips performance proven Everlast® corner bead features a hot-dipped galvanized steel surface coating providing excellent rust protection. The surface of Phillips exclusive Everlast® corner bead is etched to ensure quality mud adhesion. Phillips corner beads are easily installed using standard industry practice with drywall nails, staples, screws or clinching tool. Phillips corner beads also feature deeply knurled mud anchors to further ensure perfect mud adhesion.

KLINCHSTIK®

Phillips is the exclusive producer of klinchSTIK® metal bead. This corner bead features a grey galvanized surface coating and deeply knurled mud anchors for perfect mud adhesion. Phillips corner beads are easily installed using standard industry practice with drywall nails, staples, screws or clinching tool. Phillips klinchSTIK® is the ideal product for quick and easy installation with a clinching tool.



PART NUMBER: CBKEGB



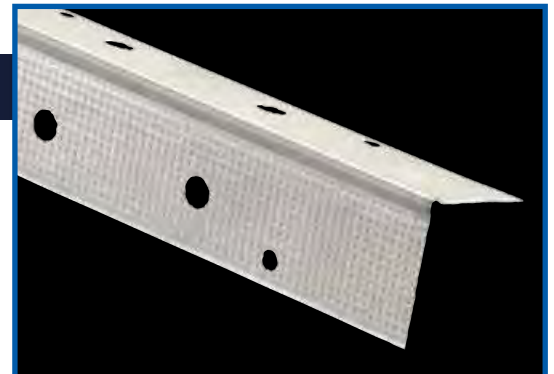
PART NUMBER: CBRSF

SHADOWFREE® CORNER BEAD

Phillips ShadowFree® corner bead is the perfect color and texture for a superior finish. This product features a hot-dipped galvanized steel surface coating plus is primed for excellent corrosion prevention and to ensure quality mud and paint adhesion. Phillips exclusive ShadowFree® surface coating helps prevent shadowing and cuts down on finishing time.

FIRST CHOICE CORNER BEAD

Phillips is the exclusive producer of First Choice corner bead. For those who prefer it, this classic product features a grey galvanized surface coating to ensure consistent, high-quality finishing every time. Like all Phillips corner beads, this bead features deeply knurled mud anchors to further ensure perfect mud adhesion.



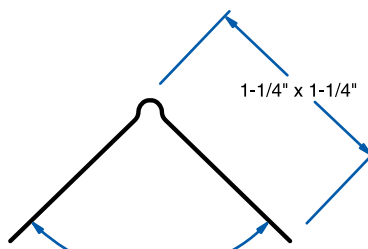
PART NUMBER: CBREGB

SIZES AND PACKAGING

CORNER BEAD

Length	Pieces Per Carton	Cartons Per Pallet	Feet Per Carton
7'	72	48	504
8'	63	48	504
9'	56	48	504
10'	50	48	500
12'	42	48	504

UPC labeling available upon request



For 90° Angles

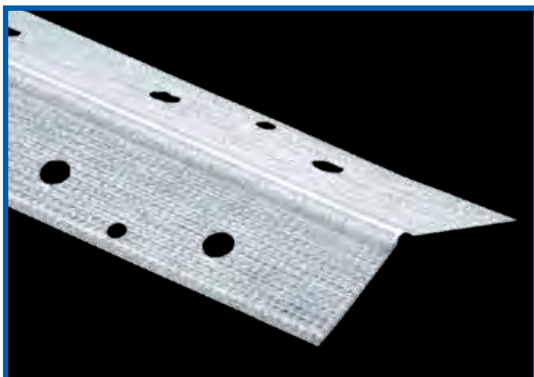
Drawing not to scale



# "Engineered to Perform"

## Phillips Metal Beads and Trims:

- Strong, dent resistant corner and edge reinforcements
- Durable, economical and straighter corners
- Deeply knurled mud anchors on flanges



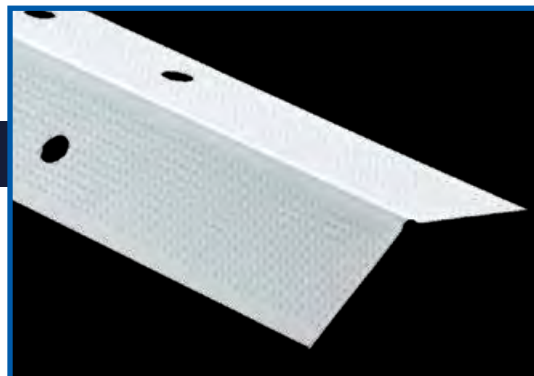
PART NUMBER: CBSHDG

## EVERLAST® SPLAY CORNER BEAD

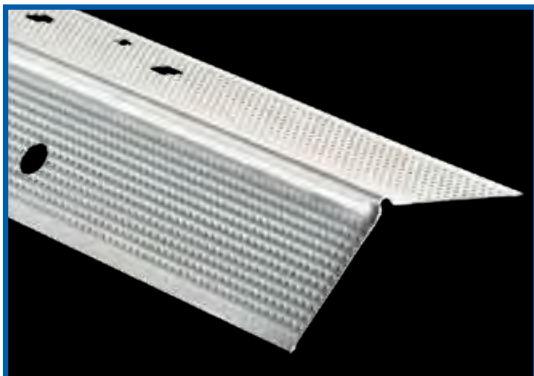
Phillips Everlast® splay corner bead creates a time-saving, smooth, consistent finish for open angles exceeding 120°. Everlast® splay features Phillips exclusive hot-dipped galvanized surface coating which provides the finest rust protection. The surface of this corner bead is etched to ensure quality mud adhesion. Install using standard industry practice with nails, staples, or screws and finish with joint compound for a high-quality professional finish. Like all Phillips corner beads, this bead features deeply knurled mud anchors to further ensure perfect mud adhesion.

## SHADOWFREE® SPLAY

Phillips ShadowFree® splay corner bead is the perfect color and texture for a superior finish. This product is primed over a hot-dipped galvanized steel surface coating for excellent corrosion prevention and to ensure quality mud and paint adhesion. Phillips exclusive ShadowFree® surface coating helps prevent shadowing and cuts down on finishing time.



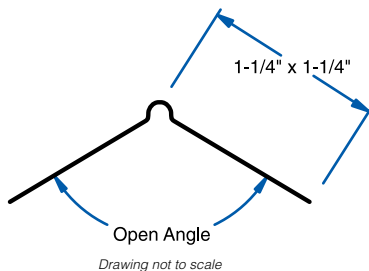
PART NUMBER: CBSSF



PART NUMBER: CBSEGB

## FIRST CHOICE SPLAY

Phillips is the exclusive producer of First Choice splay corner bead. This product is designed for open angles exceeding 120°. For those who prefer it, this classic product features a grey galvanized surface coating to ensure consistent, high-quality finishing every time. Like all Phillips corner beads, this product features deeply knurled mud anchors for perfect mud adhesion.



### SIZES AND PACKAGING

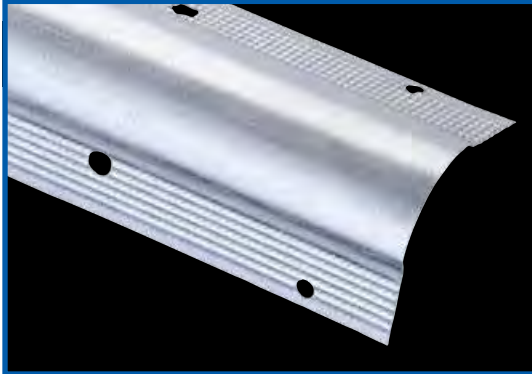
SPLAY CORNER BEAD			
Length	Pieces Per Carton	Cartons Per Pallet	Feet Per Carton
8'	63	48	504
9'	56	48	504
10'	50	48	500

UPC labeling available upon request

Phillips Metal Beads & Trims work great with our extensive line of Corner & Transition Caps. See pages 18-19 for more details.



# BULLNOSE METAL CORNER BEADS



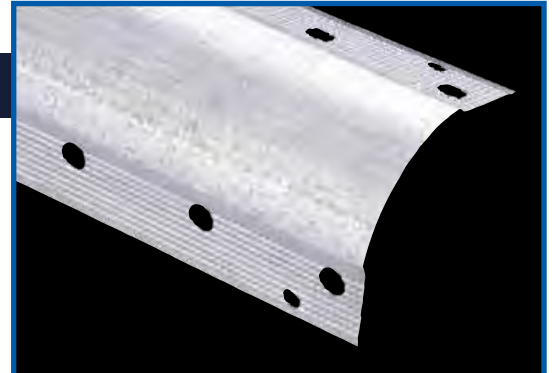
PART NUMBER: BN3HDG

## 3/4" EVERLAST® BULLNOSE

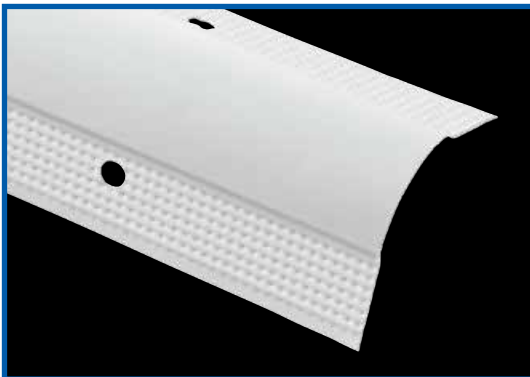
Phillips performance proven Everlast® 3/4" bullnose corner bead is used for a smooth, rounded finish on exposed edges of wallboard. Bullnose corner beads are a great way to finish off a room elegantly. This product provides superior corrosion protection and mud adhesion. This corner bead features a hot-dipped galvanized surface coating which provides the finest rust protection. The surface of Phillips exclusive Everlast® bullnose corner bead is etched to ensure quality mud adhesion. Flanges feature deeply knurled mud anchors to further ensure perfect mud adhesion. Phillips corner beads are easily installed using standard industry practice with drywall nails, staples, screws or clinching tool.

## 1-1/2" EVERLAST® BULLNOSE

Phillips performance proven Everlast® 1-1/2" bullnose corner bead provides a more pronounced round corner creating a modern look. This product also provides superior corrosion protection and mud adhesion. Phillips Everlast® products feature a hot-dipped galvanized surface coating which provides the finest rust protection. The surface of Phillips exclusive Everlast® corner bead is etched to ensure quality mud adhesion. The flanges of Phillips bullnose corner beads feature deeply knurled mud anchors to further ensure perfect mud adhesion.



PART NUMBER: BN5HDG



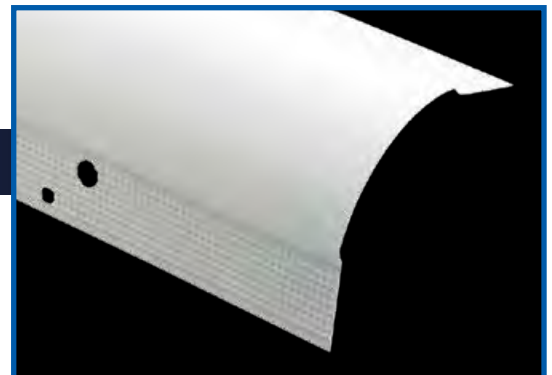
PART NUMBER: BN3SF

## 3/4" SHADOWFREE® BULLNOSE

Expand your market with the perfect color and texture for a superior finish. This product is primed over a hot-dipped galvanized steel surface coating for excellent corrosion prevention and to ensure quality mud and paint adhesion. Phillips exclusive ShadowFree® surface coating prevents shadowing and cuts down on finishing time. Phillips 3/4" bullnose corner beads provide a smooth, rounded finish on exposed edges of wallboard finishing off a room elegantly.

## 1-1/2" SHADOWFREE® BULLNOSE

Expand your market with the perfect color and texture for a superior finish. This product is primed over a hot-dipped galvanized steel surface coating for excellent corrosion prevention and to ensure quality mud and paint adhesion. Phillips exclusive ShadowFree® surface coating prevents shadowing and cuts down on finishing time. Phillips 1-1/2" bullnose corner beads provide a more pronounced round corner creating a modern look.



PART NUMBER: BN5SF

### SIZES AND PACKAGING

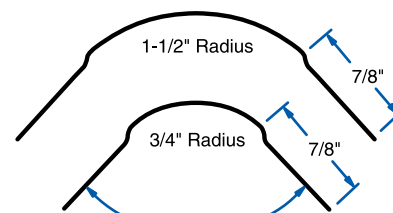
#### 3/4" BULLNOSE

Length	Pieces Per Carton	Cartons Per Pallet	Feet Per Carton
7'	58	49	406
8'	50	64	400
9'	45	63	405
10'	40	60	400
12'	33	40	396

#### 1-1/2" BULLNOSE

10'	20	40	200
-----	----	----	-----

UPC labeling available upon request



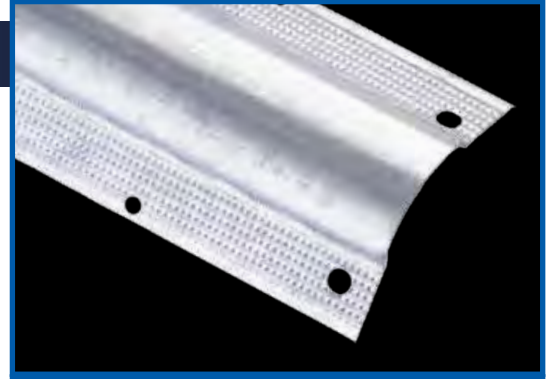
For 90° Angles

Drawing not to scale

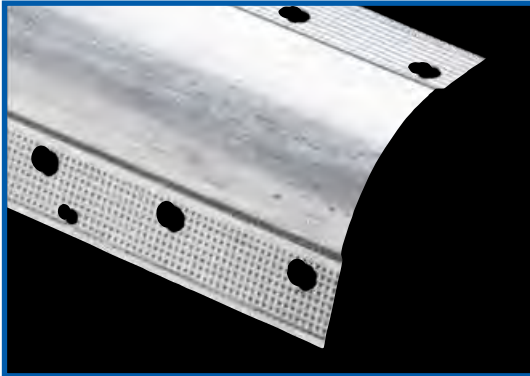


## 3/4" EVERLAST® BULLNOSE SPLAY

Phillips performance proven Everlast® 3/4" bullnose splay corner bead is used for a smooth, rounded finish on angles exceeding 120°. Bullnose splay corner beads are a great way to finish off a room elegantly. Phillips Everlast® products feature a hot-dipped galvanized surface coating which provides the finest rust protection. The surface of Phillips exclusive Everlast® bullnose splay corner bead is etched to ensure quality mud adhesion. The flanges of Phillips bullnose corner beads feature deeply knurled mud anchors to further ensure perfect mud adhesion.



PART NUMBER: BS3HDG



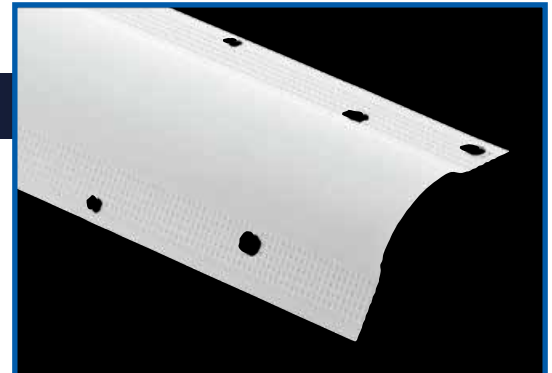
PART NUMBER: BS5HDG

## 1-1/2" EVERLAST® BULLNOSE SPLAY

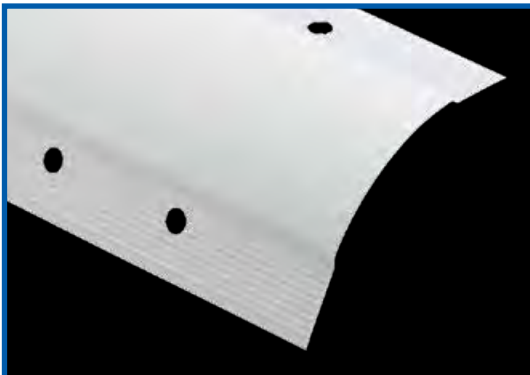
Phillips performance proven Everlast® 1-1/2" bullnose splay corner bead provides a more pronounced round corner creating a modern look on angles exceeding 120° with its larger bullnose radius. This product also provides superior corrosion protection and mud adhesion. This corner bead features a hot-dipped galvanized surface coating which provides the finest rust protection. The surface of Phillips exclusive Everlast® corner bead is etched to ensure quality mud adhesion. The flanges of Phillips bullnose corner beads feature deeply knurled mud anchors to further ensure perfect mud adhesion.

## 3/4" SHADOWFREE® BULLNOSE SPLAY

Phillips 3/4" ShadowFree® bullnose splay corner bead is the perfect color and texture for a superior finish on angles exceeding 120°. This product is primed over a hot-dipped galvanized steel surface coating for excellent corrosion prevention and to ensure quality mud and paint adhesion. Phillips exclusive ShadowFree® surface coating prevents shadowing and cuts down on finishing time.



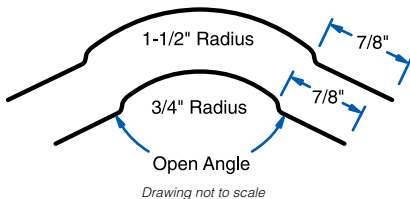
PART NUMBER: BS3SF



PART NUMBER: BS5SF

## 1-1/2" SHADOWFREE® BULLNOSE SPLAY

Phillips 1-1/2" ShadowFree® bullnose splay is the perfect color and texture for a superior finish on angles exceeding 120°. The larger bullnose radius provides a more pronounced corner creating a more modern look. This product is primed over a hot-dipped galvanized steel surface coating for excellent corrosion prevention and to ensure quality mud and paint adhesion. Phillips exclusive ShadowFree® surface coating prevents shadowing and cuts down on finishing time.

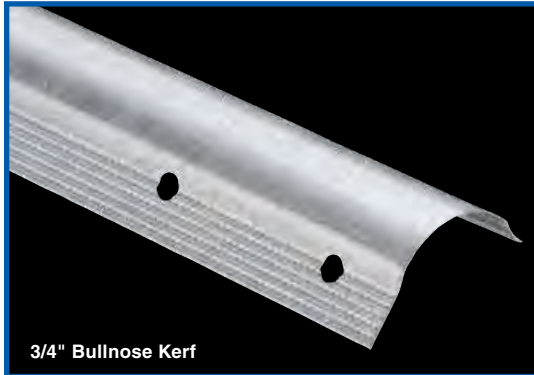


### SIZES AND PACKAGING

3/4" BULLNOSE SPLAY			
Length	Pieces Per Carton	Cartons Per Pallet	Feet Per Carton
7'	58	40	406
8'	50	40	400
9'	45	40	405
10'	40	40	400
12'	33	40	396
1-1/2" BULLNOSE SPLAY			
10'	20	40	200

UPC labeling available upon request

# BULLNOSE METAL CORNER BEADS



3/4" Bullnose Kerf

PART NUMBER: BK3HDG

## 3/4" & 1-1/2" BULLNOSE KERF

Phillips Bullnose Kerf metal has a unique shortened back flange allowing for insertion into grooved door jambs and window trims. This product is always a great fit and provides the smooth, round appearance associated with bullnose trims. This easy-to-install product is considered by many an excellent alternative to Bullnose J-Round. Bullnose Kerf is available in both 3/4" and 1-1/2" radius. The 1-1/2" provides an even rounder appearance adding a modern look to rooms. Phillips also offers Bullnose Kerf metals with ShadowFree® surface coatings (BK3SF, BK5SF); ask your sales representative for more information.



1-1/2" Bullnose Kerf

PART NUMBER: BK5HDG

### SIZES AND PACKAGING

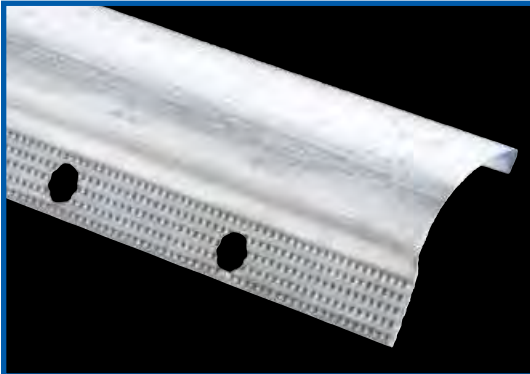
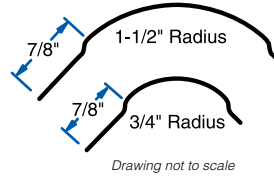
#### 3/4" BULLNOSE KERF METAL

Length	Pieces Per Carton	Cartons Per Pallet	Feet Per Carton
7'	58	40	406
8'	50	40	400
9'	45	40	405
10'	40	40	400

#### 1-1/2" BULLNOSE KERF METAL

Length	Pieces Per Carton	Cartons Per Pallet	Feet Per Carton
7'	28	40	196
8'	24	40	192
9'	22	40	198
10'	20	40	200

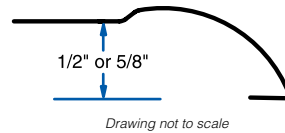
UPC labeling available upon request



PART NUMBER: SEE TEXT

## BULLNOSE J-ROUND

Phillips Bullnose J-Round is an easily installed corner bead ideal for providing a rounded edge around door and window jambs. This product is perfect to use with non-kerfed door jambs. The Bullnose J-Round has a shortened back flange that comes in handy if encasing the drywall is not desired or not available. This perfectly complementing corner bead is used by many as a trim. Bullnose J-Round has a 3/4" radius and is available in both 1/2" (BJ5HDG) and 5/8" (BJ6HDG) widths. Phillips also offers this product with ShadowFree® surface coating.



### SIZES AND PACKAGING

#### BULLNOSE J-ROUND

Length	Pieces Per Carton	Cartons Per Pallet	Feet Per Carton
7'	30	40	210
8'	30	40	240
9'	30	40	270
10'	30	40	300

UPC labeling available upon request

## BULLNOSE DOOR & WINDOW

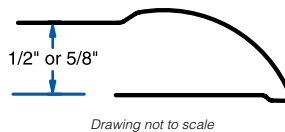
Phillips Bullnose Door & Window provides a strong metal reinforcement at doors and windows and is used by many as a trim. This easy-to-install corner bead provides a rounded edge at drywall terminations. This product has a 3/4" radius, and is available in both 1/2" (BD5HDG) and 5/8" (BD6HDG) widths. Also available with ShadowFree® surface coating.

### SIZES AND PACKAGING

#### BULLNOSE DOOR & WINDOW

Length	Pieces Per Carton	Cartons Per Pallet	Feet Per Carton
7'	20	40	140
8'	20	40	160
9'	20	40	180
10'	20	40	200

UPC labeling available upon request



PART NUMBER: SEE TEXT

# Hot-Dipped Galvanized Finishing Process

Phillips Everlast® hot-dipped galvanized finishing process is one of a kind in which Phillips **GUARANTEES** superior performance when installed properly.

Phillips Manufacturing's 3-step Everlast® hot-dipped galvanized finishing process provides the finest rust protection and mud adhesion.

- Step 1: Steel is processed to remove any foreign substances.
- Step 2: Steel surfaces are etched to ensure superior mud bonding.
- Step 3: Steel goes through a final adhesion prep process.

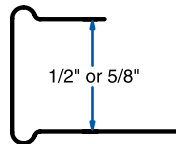


PART NUMBER: SEE TEXT

## U-200 TRIM

Phillips U-200 trim is a sturdy, channel-type steel casing product and a mudable trim. This product provides maximum protection and a professionally finished wallboard edge at window and door jambs. Phillips U-200 trim can also be applied where wallboard abuts different surfaces such as suspended ceilings, plaster, beams, masonry and concrete.

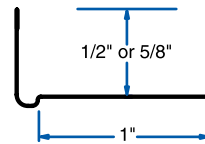
This product is easily installed to the framing or jamb using standard industry practice. Installation is complete with application of joint compound to the front side for a smooth, ready-to-paint surface. Available in both 1/2" (UT5) and 5/8" (UT6) as well as in hot-dipped galvanized, zinc bond or ShadowFree® surface coating.



Drawing not to scale

## L-200 TRIM

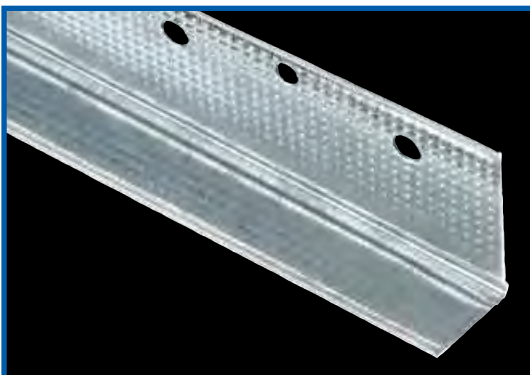
Phillips L-200 trim is a sturdy, steel casing product and a mudable trim. This product provides maximum protection and a professionally finished wallboard edge at window and door jambs. L-200 trim can also be applied where wallboard abuts different surfaces such as suspended ceilings, plaster, beams, masonry and concrete. This product is easily installed to the framing or jamb using standard industry practice. Installation is complete with application of joint compound to the front side for a smooth, ready-to-paint surface. Available in both 1/2" (LT5) and 5/8" (LT6) as well as in hot-dipped galvanized, zinc bond or ShadowFree® surface coating.



Drawing not to scale



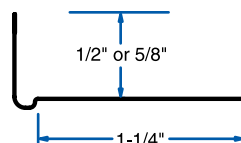
PART NUMBER: SEE TEXT



PART NUMBER: SEE TEXT

## LONG-LEG L-200 TRIM

Phillips Long-Leg L-200 trim provides an additional trim option to ensure a professional finish every time. The extra long flange can provide extra coverage where needed. Available in both 1/2" (LL5) and 5/8" (LL6) as well as in hot-dipped galvanized, zinc bond or ShadowFree® surface coating.

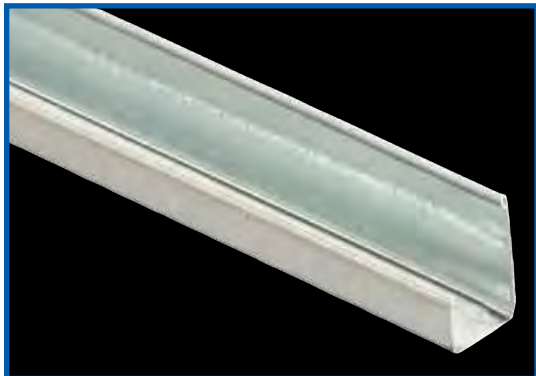


Drawing not to scale

### SIZES AND PACKAGING

U-200 TRIM (1/2" & 5/8")			
Length	Pieces Per Carton	Cartons Per Pallet	Feet Per Carton
8'	63	48	504
10'	50	49	500
L-200 TRIM (1/2" & 5/8")			
8'	63	60	504
10'	50	60	500
LONG-LEG L-200 TRIM (1/2" & 5/8")			
8'	63	49	504
10'	50	49	500

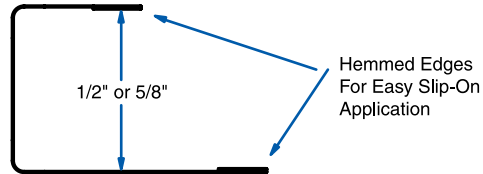
UPC labeling available upon request



PART NUMBER: SEE TEXT

### J-400 TRIM (REVEAL TRIM)

Phillips J-400 trim is an economical steel channel providing edge protection around doors and windows or any partition junction openings. Hemmed edges allow for quick installation and no joint compound is required for finishing. Phillips provides J-400 trim in both 1/2" (JT5) and 5/8" (JT6). This product is available in hot-dipped galvanized, zinc bond or ShadowFree® surface coating.



Drawing not to scale

#### SIZES AND PACKAGING

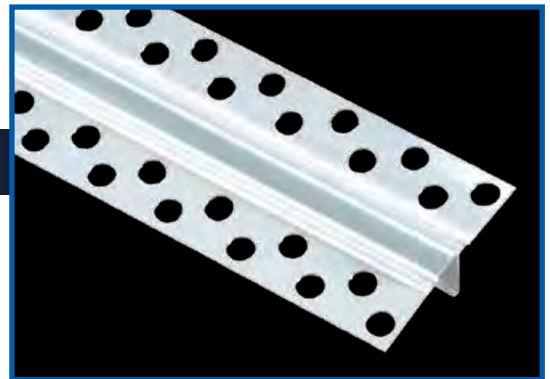
##### J-400 TRIM (1/2" & 5/8")

Length	Pieces Per Carton	Cartons Per Pallet	Feet Per Carton
8'	63	48	504
10'	50	49	500

UPC labeling available upon request

### 093 EXPANSION CONTROL JOINT

Phillips 093 zinc expansion control joints are manufactured from the highest quality solid zinc coil stock for superior corrosion resistance. An excellent product for interior or exterior applications, Phillips 093 expansion control joints relieve stresses of expansion and contraction across ceilings and wall areas. The opening is protected by plastic tape which can be removed after joint compound or plaster has been applied. Perforated flanges for excellent joint compound adhesion as the joint compound penetrates through the flanges to the drywall for long lasting adhesion. The perforated flanges also allow for faster drying. This product fits standard 1/4" openings.



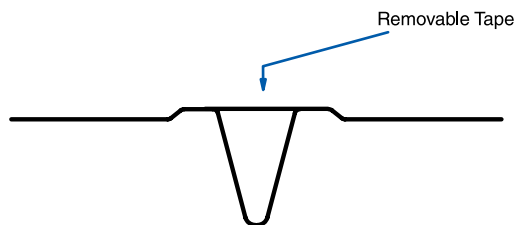
PART NUMBER: ECJ093ZNC

#### SIZES AND PACKAGING

##### 093 EXPANSION CONTROL JOINT

Length	Pieces Per Carton	Cartons Per Pallet	Feet Per Carton
10'	25	20	250

UPC labeling available upon request

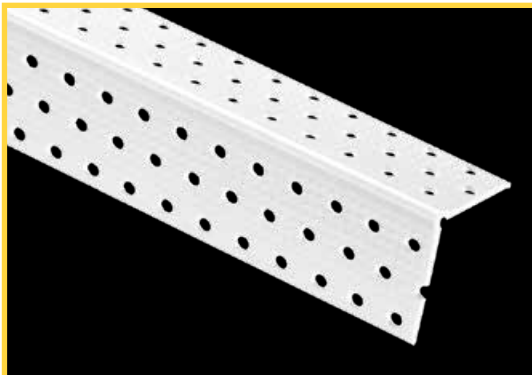


Drawing not to scale

## "Engineered to Perform"

### Phillips gripSTIK® Vinyl Products:

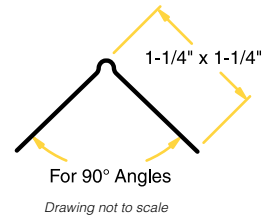
- Textured and knurled to enhance joint compound adhesion
- Durable, impact and corrosion resistant
- Perforated flanges for faster drying
- Tapered flanges for seamless finish work
- Use for both drywall and interior veneer applications
- U.S. Patents: 6,691,476 & 7,013,610



PART NUMBER: CBRVYL

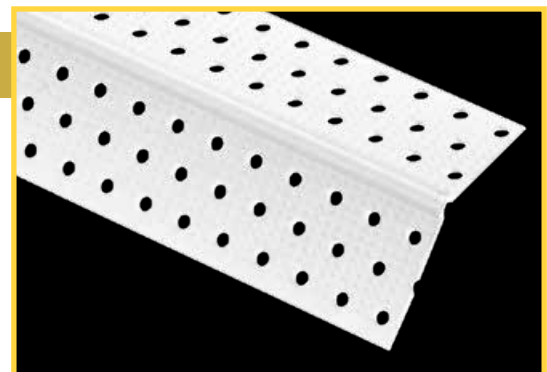
## VINYL CORNER BEAD

Phillips gripSTIK® corner bead provides a rigid protection for the exposed edges of wallboard. This easy-to-install 90° corner support can be nailed, stapled or installed with a high tack spray adhesive (see page 21 for product details). Flanges feature many perforations and deeply knurled mud anchors for excellent joint compound adhesion. The entire product is specially textured to enhance paint and mud adhesion. The standard flange length for this product is 1-1/4".

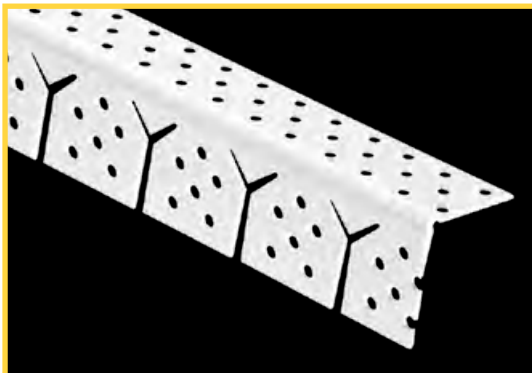
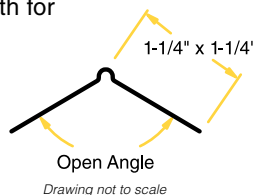


## SPLAY CORNER BEAD

Phillips gripSTIK® splay bead offers a flush fit on a variety of open angle applications from approximately 120° to 135°, making this a very versatile product. Easily install using standard industry practice with nails, staples or high tack spray adhesive (see page 21 for product details). Flanges feature many perforations and deeply knurled mud anchors for excellent joint compound adhesion. The entire product is specially textured to enhance paint and mud adhesion. The standard flange length for this product is 1-1/4".



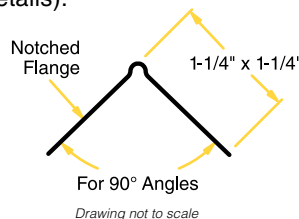
PART NUMBER: CBSVYL



PART NUMBER: CBAVYL

## MAX-FLEX® ARCHWAY

Phillips gripSTIK® MAX-Flex® archway bead is designed for maximum flexibility as our unique design allows it to conform to almost any radius. Phillips unique MAX-Flex® cut features "Y" shaped slits on the notched flange allowing for superior flexibility without kinking. The entire product is specially textured to enhance paint and mud adhesion. The standard flange length for this product is 1-1/4". Phillips gripSTIK® spray adhesive eases installation (see page 21 for details).



### SIZES AND PACKAGING

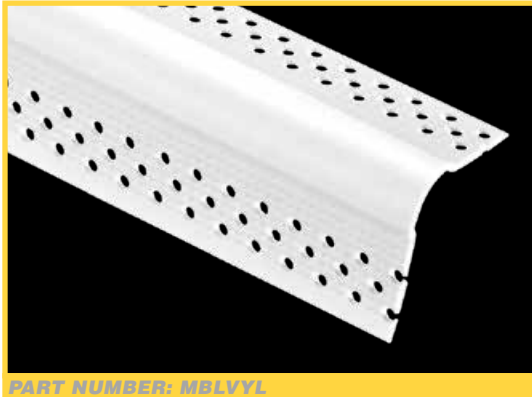
#### CORNER BEAD (REGULAR, SPLAY & ARCHWAY)

Length	Pieces Per Carton	Cartons Per Pallet	Feet Per Carton
8'	50	50	400
9'	50	50	450
10'	50	50	500

UPC labeling available upon request

# BULLNOSE VINYL CORNER BEADS

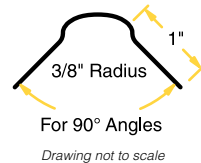
PHILLIPS



PART NUMBER: MBLVYL

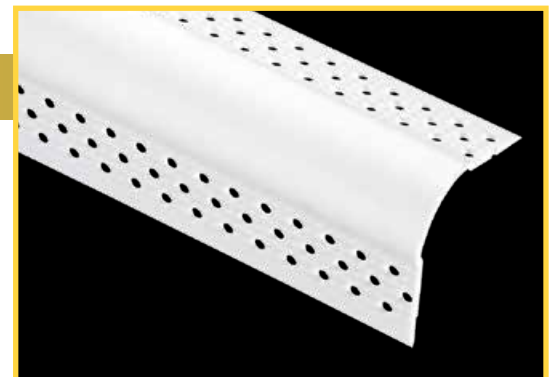
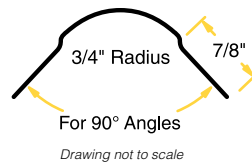
## 3/8" BULLNOSE (MINI)

Phillips gripSTIK® Mini Bullnose is great for accenting detail in niches, layers, outside corners, windows and other areas. Flanges feature many perforations, deeply knurled mud anchors, and the entire product is specially textured to greatly enhance paint and mud adhesion. Easily install Phillips Mini Bullnose products like regular corner bead; no special drywall preparation is needed. Mini Bullnose Splay and Mini MAX-Flex® Bullnose Archway are also available; see next page for details. See below for packaging information.

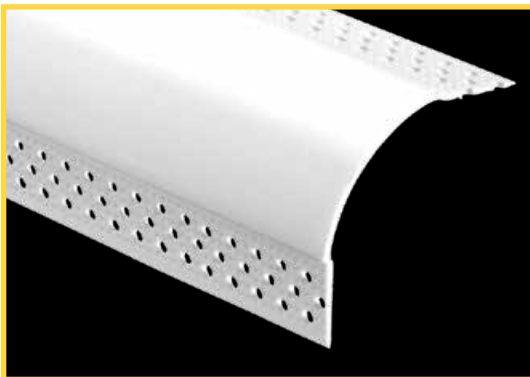


## 3/4" BULLNOSE

Phillips gripSTIK® bullnose corner beads create a smooth, rounded look to drywall corners and are easily installed using standard industry practice. Flanges feature many perforations, deeply knurled mud anchors, and the entire product is specially textured to greatly enhance paint and mud adhesion. See below for packaging information.



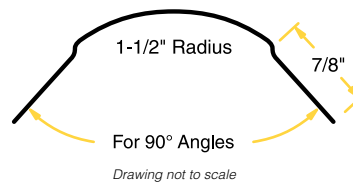
PART NUMBER: BN3VYL



PART NUMBER: BN5VYL

## 1-1/2" BULLNOSE

Phillips gripSTIK® 1-1/2" bullnose corner beads provide a larger radius for a more pronounced smooth and modern look. Flanges feature many perforations, deeply knurled mud anchors, and the entire product is specially textured to greatly enhance paint and mud adhesion.



### SIZES AND PACKAGING

#### 3/4" BULLNOSE (REGULAR, SPLAY & ARCHWAY)

Length	Pieces Per Carton	Cartons Per Pallet	Feet Per Carton
8'	35	50	280
9'	35	50	315
10'	35	50	350

#### 1-1/2" BULLNOSE (REGULAR, SPLAY & ARCHWAY)

8'	30	50	240
9'	30	50	270
10'	30	50	300

UPC labeling available upon request

### SIZES AND PACKAGING

#### MINI BULLNOSE (REGULAR & SPLAY)

Length	Pieces Per Carton	Cartons Per Pallet	Feet Per Carton
8'	35	50	280
9'	35	50	315
10'	35	50	350

#### MINI BULLNOSE ARCHWAY

8'	25	50	200
9'	25	50	225
10'	25	50	250

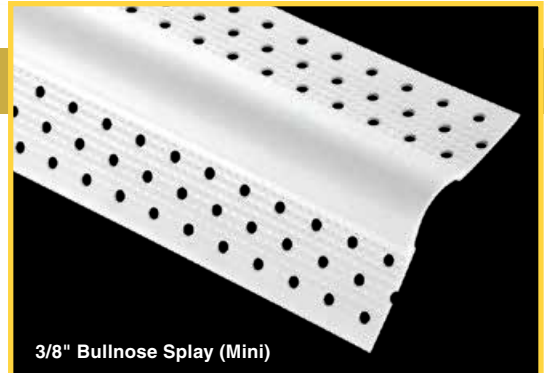
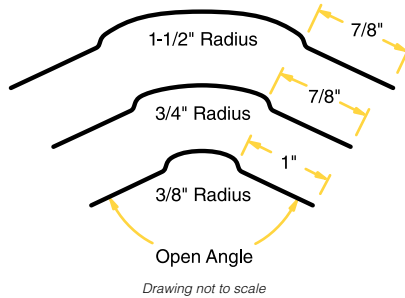
UPC labeling available upon request

## BULLNOSE SPLAY

Phillips gripSTIK® bullnose splay corner beads create a smooth, rounded look to a variety of open angles exceeding 120°. Flanges feature many perforations, deeply knurled mud anchors, and the entire product is specially textured to greatly enhance paint and mud adhesion. This product is available in 1-1/2" radius, 3/4" radius and 3/8" (Mini) radius. See previous page for packaging information.



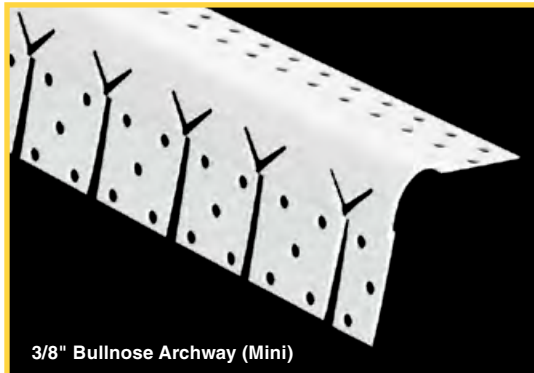
3/4" Bullnose Splay  
PART NUMBER: BS3VYL



3/8" Bullnose Splay (Mini)  
PART NUMBER: MBSVYL



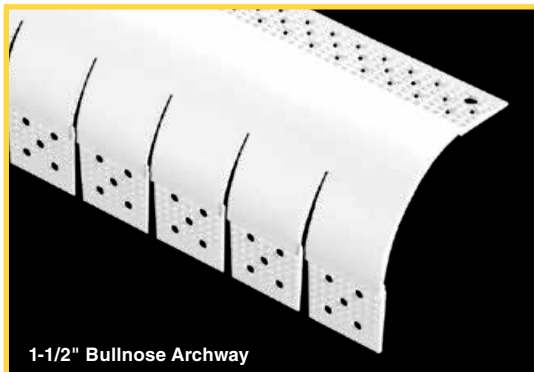
1-1/2" Bullnose Splay  
PART NUMBER: BS5VYL



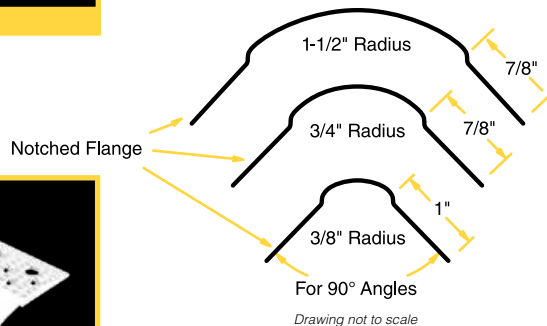
3/8" Bullnose Archway (Mini)  
PART NUMBER: MBAVYL

## MAX-FLEX® BULLNOSE ARCHWAY

Phillips gripSTIK® MAX-Flex® bullnose archway bead is designed for maximum flexibility allowing it to conform to almost any radius creating a round, elegant look. The 3/4" radius and 1-1/2" radius feature a straight-cut design for minimal fill-in. Mini Bullnose archway (3/8") features our unique "Y" shaped slits on the notched flange allowing for superior flexibility without kinking. Flanges feature many perforations, deeply knurled mud anchors, and the entire product is specially textured to greatly enhance paint and mud adhesion. This product is available in 1-1/2" radius, 3/4" radius and 3/8" (Mini) radius. See previous page for packaging information.



1-1/2" Bullnose Archway  
PART NUMBER: BASVYL



3/4" Bullnose Archway  
PART NUMBER: BA3VYL

Use gripSTIK® Spray Adhesive with Phillips Vinyl Beads & Trims for perfect adhesion. See page 21 for product details.



# BULLNOSE VINYL CORNER BEADS

PHILLIPS



## 3/4" & 1-1/2" BULLNOSE KERF

Phillips gripSTIK® bullnose kerf has a unique shortened back flange allowing for easy insertion into grooved door jambs and window trims. Install using standard industry practice. This product is always a great fit and provides the smooth, round appearance associated with bullnose trims. Flanges feature many perforations, deeply knurled mud anchors, and the entire product is specially textured to greatly enhance paint and mud adhesion. Phillips offers vinyl bullnose kerf in both 3/4" and 1-1/2" radius for your convenience. The 1-1/2" radius provides a more pronounced round appearance adding a modern look to rooms.



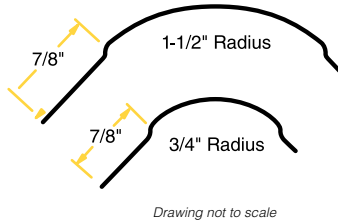
3/4" Bullnose Kerf

PART NUMBER: BK3VYL



1-1/2" Bullnose Kerf

PART NUMBER: BK5VYL



Drawing not to scale

### SIZES AND PACKAGING

#### 3/4" BULLNOSE KERF

Length	Pieces Per Carton	Cartons Per Pallet	Feet Per Carton
8'	35	50	280
9'	35	50	315
10'	35	50	350

#### 1-1/2" BULLNOSE KERF

8'	30	70	240
9'	30	70	270
10'	30	70	300

UPC labeling available upon request

## BULLNOSE INSIDE BEADS

Phillips gripSTIK® bullnose inside beads create a smooth, round appearance to inside corners. This product is a great way to finish off a room elegantly. Phillips provides this product in both 3/4" (BI3VYL) and 1-1/2" (BI5VYL) radius. In addition, Phillips also provides the splay or open angle version of this product in both 3/4" (BIS3VYL) and 1-1/2" (BIS5VYL) radius for your convenience. Ask your sales representative for more information.



3/4" Bullnose Inside Bead

PART NUMBER: SEE TEXT

### SIZES AND PACKAGING

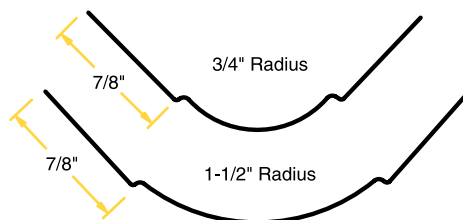
#### 3/4" INSIDE BEAD (REGULAR & SPLAY)

Length	Pieces Per Carton	Cartons Per Pallet	Feet Per Carton
8'	35	70	280
9'	35	70	315
10'	35	70	350

#### 1-1/2" INSIDE BEAD (REGULAR & SPLAY)

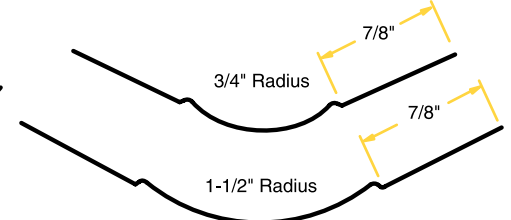
8'	30	70	240
9'	30	70	270
10'	30	70	300

UPC labeling available upon request



For 90° Angles

Drawing not to scale



For Open Angles

Drawing not to scale



## "Engineered to Perform"

### Phillips gripSTIK® Corner Beads:

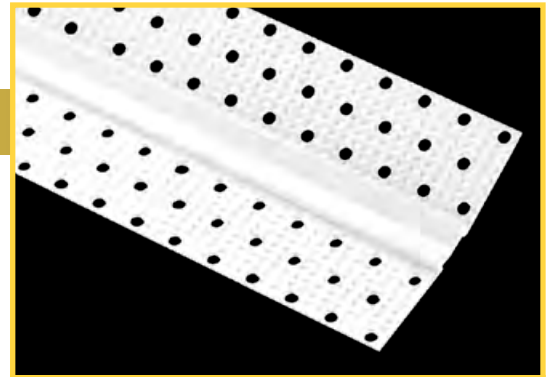
- Perforated flanges for excellent joint compound adhesion as the joint compound penetrates through the bead to the drywall to support long-lasting adhesion
- Deeply knurled mud anchors on flanges enhance joint compound adhesion
- Works great for both drywall and interior veneer applications

### INSIDE CORNER ADJUSTABLE

Phillips gripSTIK® inside corner adjustable has a unique flexible angle design that easily adjusts to any degree inside corner. This Phillips product is the best for finishing inside corners because it is durable, maintains shape when settlement occurs and reduces call backs. This extremely versatile product has been specially engineered to flex to virtually any degree inside or outside corner without breaking. Flanges feature many perforations, deeply knurled mud anchors, and the entire product is specially textured to greatly enhance paint and mud adhesion.



Drawing not to scale



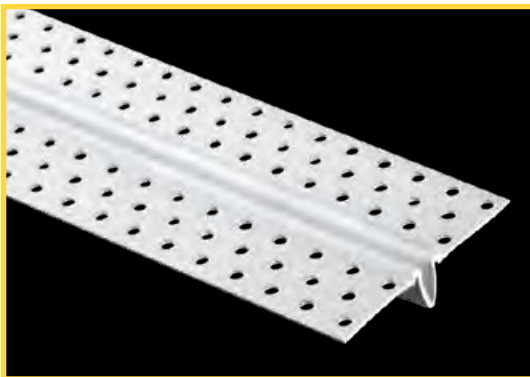
PART NUMBER: ICBVYL

### SIZES AND PACKAGING

#### INSIDE CORNER ADJUSTABLE

Length	Pieces Per Carton	Cartons Per Pallet	Feet Per Carton
8'	70	50	560
9'	70	50	630
10'	70	50	700

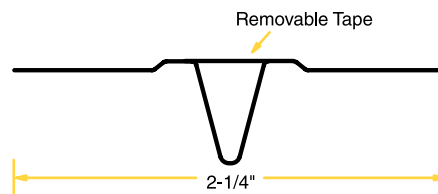
UPC labeling available upon request



PART NUMBER: EZSVYL

### E-Z STRIP® EXPANSION CONTROL JOINT

Phillips gripSTIK® 093 E-Z Strip® expansion control joint is designed to relieve the stresses of contraction and expansion. The expansion control joint groove is protected by plastic tape that can be easily removed after the joint finishing material has dried, leaving a clean well-formed joint. Easily install this durable and impact resistant product using standard industry practice. The perforated and knurled flanges allow for faster drying and enhance mud adhesion.



Drawing not to scale

### SIZES AND PACKAGING

#### E-Z STRIP® EXPANSION CONTROL JOINT

Length	Pieces Per Carton	Cartons Per Pallet	Feet Per Carton
10'	25	45	250

UPC labeling available upon request





## "Engineered to Perform"

### Phillips gripSTIK® Corner and Transition Caps:

- Over 50 different corner and transition caps available
- Works great with Phillips metal, vinyl or paper faced metal bullnose corner beads
- U.S. Patents: RE34,547; 6,438,914; D487,520; D487,156; D501,050 and D486,920

### 3/4" 3-WAY CORNER

Phillips gripSTIK® 3/4" 3-way corner is designed to easily finish three intersecting bullnose 90° outside corners. This product eliminates the need for mitering and corner filling, saving time and reducing waste. Alignment tabs make it easy to match with Phillips metal, vinyl or paper faced metal bullnose corner beads. Perforated to enhance mud adhesion. Also available in 3/8" radius (Mini) and 1-1/2" radius (see below). Packaging is 50 pieces per carton.



PART NUMBER: CAP387



PART NUMBER: CAP385

### 1-1/2" 3-WAY CORNER

Phillips gripSTIK® 1-1/2" 3-way corner is designed to easily finish three intersecting bullnose 90° outside corners. This product eliminates the need for mitering and corner filling, saving time and reducing waste. Alignment tabs make it easy to match with Phillips metal, vinyl or paper faced metal bullnose corner beads. Perforated to enhance mud adhesion. Also available in 3/8" radius (Mini) and 3/4" radius (see above). Packaging is 50 pieces per carton.

### 3/4" 3-WAY SPLAY CORNER

Phillips gripSTIK® 3/4" 3-way splay corner is designed to easily finish where two 90° outside corners intersect with one outside splay corner. This product eliminates the need for mitering and corner filling, saving time and reducing waste. Alignment tabs make it easy to match with Phillips metal, vinyl or paper faced metal bullnose corner beads. Perforated to enhance mud adhesion. Also available in 3/8" radius (Mini) and 1-1/2" radius (see below). Packaging is 50 pieces per carton.



PART NUMBER: CAP187



PART NUMBER: CAP185

### 1-1/2" 3-WAY SPLAY CORNER

Phillips gripSTIK® 1-1/2" 3-way off-angle corner is designed to easily finish where two 90° outside corners intersect with one outside splay corner. This product eliminates the need for mitering and corner filling, saving time and reducing waste. Alignment tabs make it easy to match with Phillips metal, vinyl or paper faced metal bullnose corner beads. Perforated to enhance mud adhesion. Also available in 3/8" radius (Mini) and 3/4" radius (see above). Packaging is 50 pieces per carton.

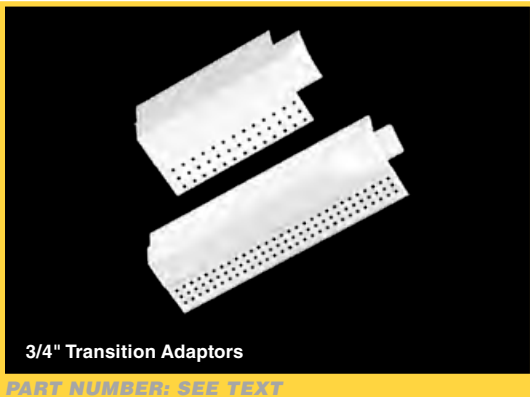
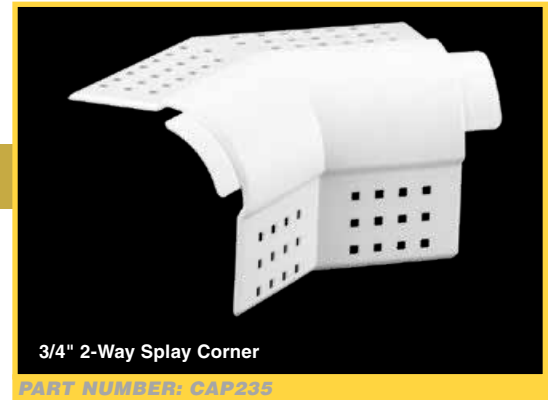
## 2-WAY CORNER

Phillips gripSTIK® 2-way corners are designed to easily finish two intersecting 90° outside corners. This product works great to cap corners of windows, closets, doorways, skylights and other areas. Corner caps eliminate the need for mitering and corner filling, saving time and reducing waste. Perforated to enhance mud adhesion. Alignment tabs make it easy to match with Phillips metal, vinyl or paper faced metal bullnose corner beads. Available in 3/8" (Mini), 3/4" and 1-1/2". 3/8" (Mini) is a special order product. Packaging is 50 pieces per carton.



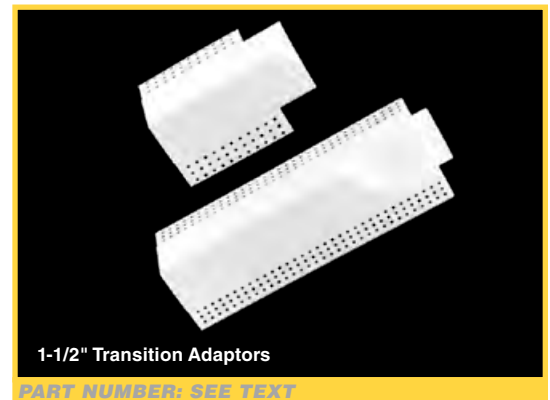
## 2-WAY SPLAY CORNER

Phillips gripSTIK® 2-way splay corners are designed to easily finish where two 90° outside corners intersect at angles greater than 90° or open angles. This product works great to corner cap windows, closets, doorways, skylights and other areas. Perforated to enhance mud adhesion. Alignment tabs make it easy to match with Phillips metal, vinyl or paper faced metal bullnose corner beads. Available in 3/8" (Mini), 3/4" and 1-1/2". 3/8" (Mini) is a special order product. Packaging is 50 pieces per carton.



## TRANSITION ADAPTORS

Phillips gripSTIK® transition caps are designed to eliminate gaps between bullnose corner bead and baseboard or crown molding by transitioning bullnose corners to 90° corners. Perforated to enhance mud adhesion. Phillips transition caps install quickly and easily using standard industry practice and can be used with Phillips metal, vinyl or paper faced metal beads. Available in 3/4" overlap transition cap (TRN790), 3/4" transition cap with alignment tab (TRN8590), 1-1/2" overlap transition cap (TRN890) and 1-1/2" transition cap with alignment tab (TRN8790). 3/8" (Mini) is also available as a special order product. Packaging is 50 pieces per carton.



### Didn't Find The Corner Or Transition Cap You Were Looking For?

Phillips has over 50 different corner and transition caps available. Ask your sales representative or call 800.822.5055 for more details.



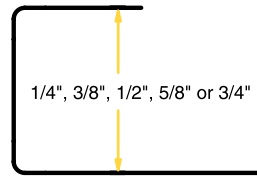


**VINYL J-TRIM**

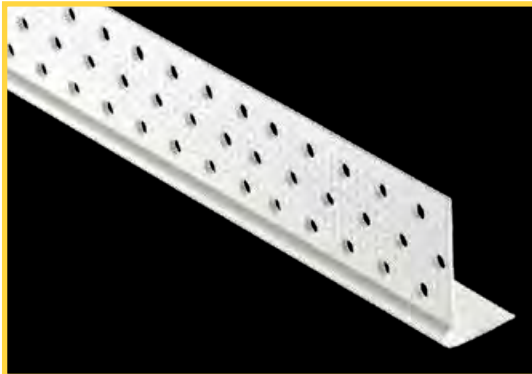
Phillips gripSTIK® J-Trim provides a finished edge at door and window openings along with other various wallboard intersections. This durable and impact resistant trim was designed with ease of installation in mind. J-Trim does not require any joint compound and can be nailed or slipped on. Install using standard industry practice. Phillips offers this product in 1/4" (JT2VYL), 3/8" (JT3VYL), 1/2" (JT5VYL), 5/8" (JT6VYL) and 3/4" (JT7VYL).



PART NUMBER: SEE TEXT



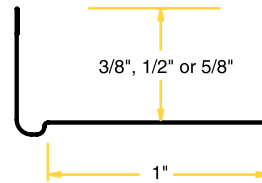
Drawing not to scale



PART NUMBER: SEE TEXT

**L-TRIM**

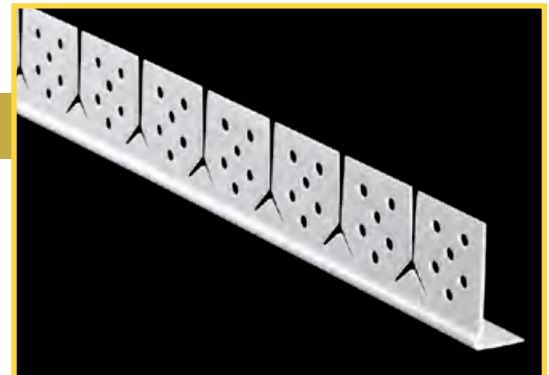
Phillips gripSTIK® L-Trim provides a clean, sharp edge at door, window, ceiling and other terminations. Install using standard industry practice. The many perforations and raised shoulder enhance strong compound adhesion and provide for a flush finish. Its deeply knurled mud anchors and specially textured surface provide superior paint and mud adhesion. Phillips offers this product in 3/8" (LT3VYL), 1/2" (LT5VYL) and 5/8" (LT6VYL).



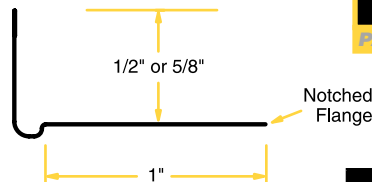
Drawing not to scale

**MAX-FLEX® L-TRIM ARCHWAY**

Phillips gripSTIK® MAX-Flex® L-Trim archway is designed for maximum flexibility, conforming to almost any radius. This product features "Y" shaped slits on the notched flange for superior flexibility without kinking. The entire product is specially textured to enhance paint and mud adhesion. This product works great to provide a clean edge at door, window, ceiling and other terminations. This product is available in 1/2" (LA5VYL) and 5/8" (LA6VYL) sizes.



PART NUMBER: SEE TEXT



Drawing not to scale

**SIZES AND PACKAGING**

**J-TRIM (ALL SIZES)**

Length	Pieces Per Carton	Cartons Per Pallet	Feet Per Carton
8'	50	48	400
9'	50	48	450
10'	50	48	500

**L-TRIM (ALL SIZES)**

8'	80	48	640
9'	80	48	720
10'	80	48	800

UPC labeling available upon request

**SIZES AND PACKAGING**

**MAX-FLEX® L-TRIM ARCHWAY (ALL SIZES)**

Length	Pieces Per Carton	Cartons Per Pallet	Feet Per Carton
8'	80	48	640
9'	80	48	720
10'	80	48	800

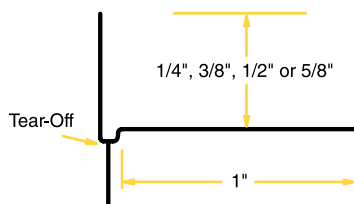
UPC labeling available upon request

## L-TEAR STRIP

Phillips gripSTIK® L-Tear Strip provides a clean line at a variety of wallboard intersections. The tear-off strip provides a protective edge and a guide for drywall finishing knives. Once joint compound is applied, finished and painted, the tear-off strip is removed to form a clean, crisp edge. Its deeply knurled mud anchors, many perforations, and specially textured surface provide superior paint and joint compound adhesion. Phillips offers this product in 1/4" (TS2VYL), 3/8" (TS3VYL), 1/2" (TS5VYL) and 5/8" (TS6VYL).



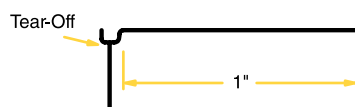
PART NUMBER: SEE TEXT



PART NUMBER: FTSVYL

## FLAT L-TEAR STRIP

Phillips gripSTIK® Flat L-Tear Strip provides a clean line at a variety of wallboard intersections. A one-size-fits-all product, the Flat L-Tear Strip is used where a straight edge is needed and there is not enough room at the intersection for the leg. The tear-off strip provides a protective edge and a guide for drywall finishing knives. Once joint compound is applied, finished and painted, the tear-off strip is removed to form a clean, crisp edge. This product features deeply knurled mud anchors, many perforations, and specially textured surface to provide superior paint and joint compound adhesion.



Drawing not to scale

## GRIPSTIK® SPRAY ADHESIVE

Phillips gripSTIK® spray adhesive is a high tack web based spray adhesive ideal for adhering vinyl corner bead to drywall. This product works great with gripSTIK® vinyl beads and trims (see pages 13-21 for product details). This web based spray adhesive features a unique adjustable nozzle for desired spray strength and width. This quality product is available in 17 oz cans. Packaging is 12 cans per case, 80 cases per pallet.



PART NUMBER: 999SPRAY

### SIZES AND PACKAGING

#### L-TEAR STRIP (ALL SIZES)

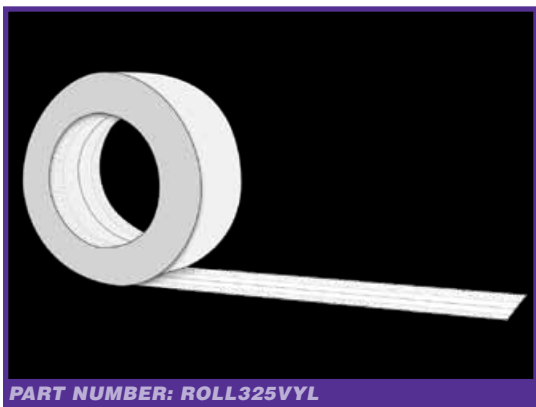
Length	Pieces Per Carton	Cartons Per Pallet	Feet Per Carton
8'	50	48	400
9'	50	48	450
10'	50	48	500

#### FLAT L-TEAR STRIP

8'	50	48	400
10'	50	48	500

UPC labeling available upon request

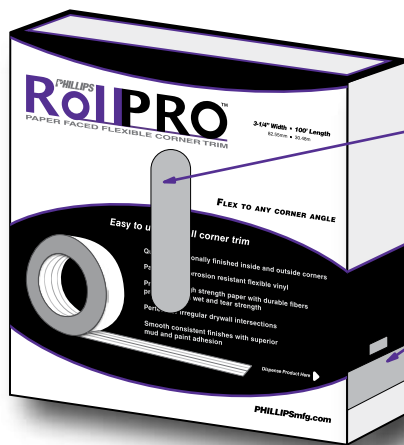




PART NUMBER: ROLL325VYL

**ROLLPRO™ PAPER FACED TRIM**

Phillips RollPRO™ paper faced flexible corner trim is an easy-to-use versatile product for drywall finishing. This product features a paper faced corrosion resistant flexible vinyl that flexes to any corner angle for quick professionally finished inside and outside corners. It is perfect for irregular drywall intersections and provides a smooth consistent finish with superior mud and paint adhesion. This product features proprietary high strength paper with durable fibers promoting high wet and tear strength. It is available in 3-1/4" width and comes in 100' rolls.



Quick-grab handle

Product dispenser

**SIZES AND PACKAGING**

**ROLLPRO™ FLEXIBLE CORNER TRIM**

Length	Rolls Per Carton	Cartons Per Case	Feet Per Case
100'	1	10	1000'

Looking for a mud hopper? Phillips offers mud hoppers for easy installation of our Paper Faced Beads & Trims. See page 25 for product details.



## "Engineered to Perform"

### Phillips kwikSTIK® Paper Faced Products:

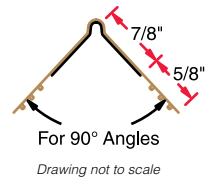
- Rust preventative fully galvanized coating to withstand elements and adverse drying conditions
- No edge cracking
- No nail pops
- High strength proprietary paper prevents nose coat bleed-through and balling when sanding



PART NUMBER: PEW14EGB

### P1 XW EL (PEW)

Phillips kwikSTIK® P1 XW EL outside corner bead can be used on 90° outside corners with any standard drywall thickness for a clean, professional finish. This product features approximately 20% thicker steel than ASTM standard C1047 minimum requirement for a strong, durable corner. P1 XW EL is tape-on, meaning no fasteners or nails are needed for installation. Specially engineered paper provides superior mud and paint adhesion.

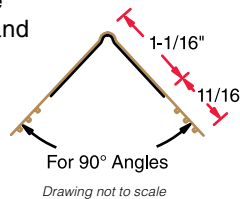


### P1 MICRO BEAD (P1M)

Phillips kwikSTIK® P1 Micro Bead outside corner bead is manufactured with ease and speed of installation in mind. With its smaller bead and wider flanges, this product goes up fast and requires less mudding, saving both time and money. Phillips P1 Micro bead features approximately 20% thicker steel than ASTM standard C1047 minimum requirement for a strong, durable corner. No fasteners or nails are needed for installation. Top quality paper provides superior mud and paint adhesion.



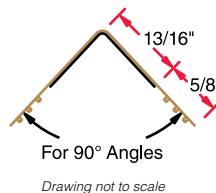
PART NUMBER: P1M14EGB



PART NUMBER: P1N14EGB

### No BEAD P1 X EL NB (P1N)

Phillips kwikSTIK® P1 X EL NB outside square corner bead is designed as an economical product as it features no bead meaning minimal joint compound is required for installation. Phillips P1 X EL NB features approximately 20% thicker steel than ASTM standard C1047 minimum requirement for a strong, durable corner. No fasteners or nails are needed for installation, and specially engineered paper provides superior mud and paint adhesion. See page 24 for No Bead Super Wide.



### SIZES AND PACKAGING

#### PEW, P1M, P1N

Length	Pieces Per Carton	Cartons Per Pallet	Feet Per Carton
8'	50	56	400
9'	50	56	450
10'	50	56	500

UPC labeling available upon request

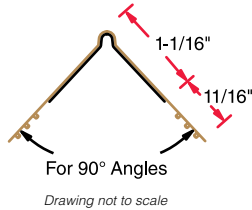


# TAPE-ON PAPER FACED CORNER BEADS



## P1 DELUXE SUPER WIDE (PDW)

Phillips kwikSTIK® P1 Deluxe Super Wide outside corner bead features wider flanges for more complete coverage when finishing 90° corners. This product meets ASTM standard C1047. No fasteners or nails are needed for installation.



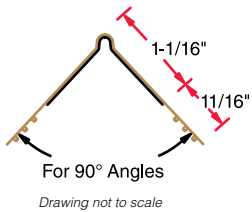
PART NUMBER: PDW12EGB



PART NUMBER: PSW10EGB

## P1 SUPER WIDE (PSW)

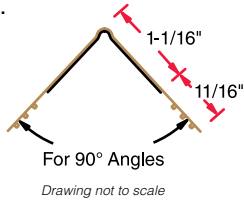
Phillips kwikSTIK® P1 Super Wide outside corner bead features wider flanges for more complete coverage. This product is essentially the same product as P1 Deluxe Super Wide except P1 Super Wide utilizes slightly lighter steel making it a more economical product. This slightly lighter steel does not comply with ASTM standard C1047; however, this product meets all other applicable ASTM standard requirements.



PART NUMBER: PDM12EGB

## DELUXE MICRO BEAD (PDM)

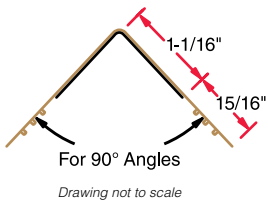
Phillips kwikSTIK® Deluxe Micro Bead outside corner bead is manufactured with ease and speed of installation in mind. With its smaller bead and wider flanges, this product goes up fast and requires less mudding, saving both time and money. This product meets ASTM standard C1047. No fasteners or nails are needed for installation. Top quality paper provides superior mud and paint adhesion.



PART NUMBER: PNB12EGB

## NO BEAD SUPER WIDE (PNB)

Phillips kwikSTIK® No Bead Super Wide outside square corner bead is designed as an economical product as it features no bead meaning minimal joint compound is required for installation. Phillips No Bead Super Wide meets ASTM standard C1047. This product features extra wide flanges for additional coverage where needed. No fasteners or nails are needed for installation, and specially engineered paper provides superior mud and paint adhesion.



SIZES AND PACKAGING			
PDW, PSW, PDM, PNB			
Length	Pieces Per Carton	Cartons Per Pallet	Feet Per Carton
8'	50	56	400
9'	50	56	450
10'	50	56	500

UPC labeling available upon request



### "Engineered to Perform"

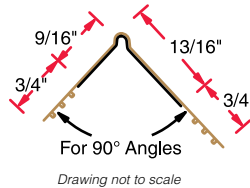
#### Phillips kwikSTIK® Paper Faced Products:

- No fasteners or nails needed for installation
- Perforated to help drying and serve as mud anchors
- Features approximately 30% more mud anchors per square inch than competitive products
- Proprietary paper composition promoting high wet and tear strength



### P1W UNEVEN LEG (PUL)

Phillips P1W outside square corner bead features an uneven leg designed to finish 90° corners. This product features approximately 20% thicker steel than ASTM standard C1047 minimum requirement for a strong, durable corner. No fasteners or nails are needed for installation, and specially engineered paper provides superior mud and paint adhesion.



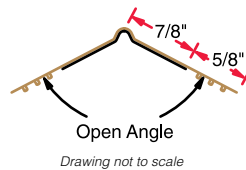
PART NUMBER: PUL14EGB



PART NUMBER: PSS14EGB

### P1-OS SPLAY (PSS)

Phillips kwikSTIK® P1-OS outside splay corner bead is designed to finish open angle corners exceeding 120°. P1-OS features approximately 20% thicker steel than ASTM standard C1047 minimum requirement for a strong, durable corner. No fasteners or nails are needed for installation.



PART NUMBER: HOPPEROC

### MUD HOPPER

Phillips Mud Hoppers work great to easily install kwikSTIK® Paper Faced Beads and Trims. This hopper is designed for all tape-on 90°, 3/4" bullnose and L beads. Phillips Mud Hoppers eliminate time consuming work, provide easy clean-up and are lightweight. Ask your Phillips sales representative for more information.

#### SIZES AND PACKAGING

##### PUL, PSS

Length	Pieces Per Carton	Cartons Per Pallet	Feet Per Carton
8'	50	56	400
9'	50	56	450
10'	50	56	500

UPC labeling available upon request



# TAPE-ON BULLNOSE PAPER FACED CORNER BEADS

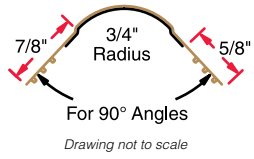


## SLOK (PBT)

Phillips kwikSTIK® 3/4" SLOK bullnose corner bead provides a smooth, rounded finish to outside 90° corners. This product features approximately 20% thicker steel than ASTM standard C1047 minimum requirement for a strong, durable corner. Specially engineered paper provides superior mud and paint adhesion on all Phillips paper faced products. No fasteners or nails are needed for installation with Phillips kwikSTIK® tape-on corner beads.



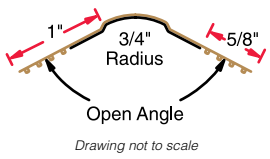
PART NUMBER: PBT14EGB



PART NUMBER: PAT14EGB

## SLOK-OS (PAT)

Phillips kwikSTIK® 3/4" SLOK-OS bullnose splay corner bead works great to provide a more pronounced round finish to outside corners exceeding 120°. This product features approximately 20% thicker steel than ASTM standard C1047 minimum requirement for a strong, durable corner. Specially engineered paper provides superior mud and paint adhesion on all Phillips paper faced products. No fasteners or nails are needed for installation with Phillips kwikSTIK® tape-on corner beads.

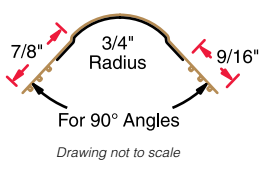


## 3/4" SOUTHWESTERN BULLNOSE (PST)

Phillips kwikSTIK® 3/4" Southwestern Bullnose corner bead is an economical bead providing a round, smooth appearance to 90° outside corners. This product utilizes slightly lighter steel which does not meet ASTM standard C1047; however, this product meets all other applicable ASTM standards. No fasteners or nails are needed for installation, and specially engineered paper provides superior mud and paint adhesion.



PART NUMBER: PST10EGB



### SIZES AND PACKAGING

#### PBT, PAT, PST

Length	Pieces Per Carton	Cartons Per Pallet	Feet Per Carton
8'	50	56	400
9'	50	56	450
10'	50	56	500

UPC labeling available upon request

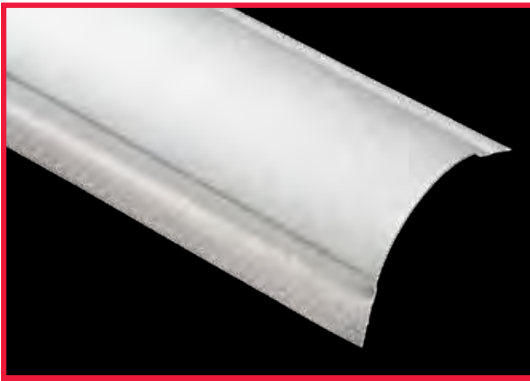
Phillips Paper Faced Beads & Trims work great with our extensive line of Corner & Transition Caps. See pages 18-19 for details.



## "Engineered to Perform"

### Phillips kwikSTIK® Paper Faced Products:

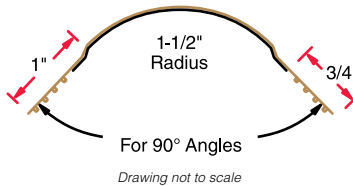
- Cut down finishing time
- Require less joint compound
- No call backs
- U.S. Patents: 6,295,776; 6,539,680; 6,722,092 and 7,013,610



PART NUMBER: PHT14EGB

## 1-1/2" BULLNOSE (PHT)

Phillips kwikSTIK® 1-1/2" Bullnose corner bead works great to provide a more pronounced round finish to outside 90° corners. This product features approximately 20% thicker steel than ASTM standard C1047 minimum requirement for a strong, durable corner. Specially engineered paper provides superior mud and paint adhesion on all Phillips paper faced products. No fasteners or nails are needed for installation with Phillips kwikSTIK® tape-on corner beads.



## 1-1/2" BULLNOSE SPLAY (PJT)

Phillips kwikSTIK® 1-1/2" Bullnose Splay corner bead works great to provide a more pronounced round finish to outside corners exceeding 120°. This product features approximately 20% thicker steel than ASTM standard C1047 minimum requirement for a strong, durable corner. Specially engineered paper provides superior mud and paint adhesion on all Phillips paper faced products. No fasteners or nails are needed for installation with Phillips kwikSTIK® tape-on corner beads.



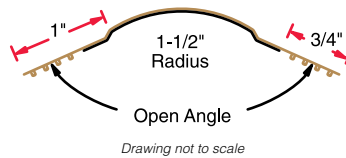
PART NUMBER: PJT14EGB

### SIZES AND PACKAGING

#### PHT, PJT

Length	Pieces Per Carton	Cartons Per Pallet	Feet Per Carton
8'	25	56	200
9'	25	56	225
10'	25	56	250

UPC labeling available upon request

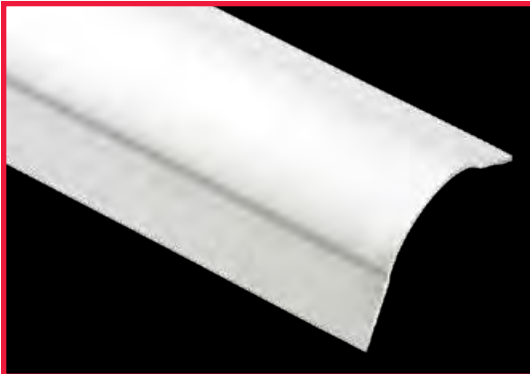




## "Engineered to Perform"

### Phillips kwikSTIK® Paper Faced Products:

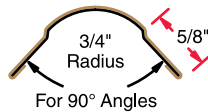
- Patented high strength paper with durable fibers for smooth consistent finishes with superior mud and paint adhesion
- Extreme heat, cold and water tested for superior bond between steel and paper to eliminate delamination



PART NUMBER: PBN14EGB

## SLOK-N (PBN)

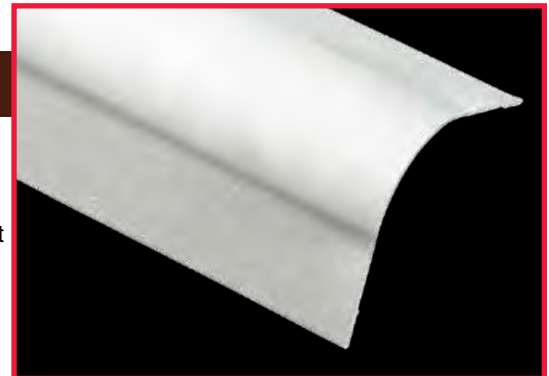
Phillips kwikSTIK® SLOK-N nail-on bullnose corner bead is designed for smooth, round outside corners where nailing or other mechanical fastening is desired. This metal corner bead is covered with our specially engineered paper providing superior mud and paint adhesion. SLOK-N features approximately 20% thicker steel than ASTM standard C1047 minimum requirement for a strong, durable corner.



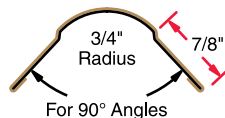
Drawing not to scale

## SLOK-NXW (PEN)

Phillips kwikSTIK® SLOK-NXW nail-on bullnose extra wide corner bead is designed for smooth, round outside corners where nailing or other mechanical fastening is desired. This product provides wider flanges for easier nailing and maximum coverage. SLOK-NXW features approximately 20% thicker steel than ASTM standard C1047 minimum requirement for a strong, durable corner. This metal corner bead is covered with our specially engineered paper providing superior mud and paint adhesion.



PART NUMBER: PEN14EGB



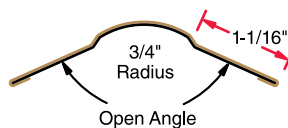
Drawing not to scale



PART NUMBER: PAN14EGB

## SLOK-NOS (PAN)

Phillips kwikSTIK® SLOK-NOS nail-on bullnose splay corner bead provides a round, smooth corner to open angles exceeding 120° where nailing or other mechanical fastening is desired. This product features approximately 20% thicker steel than ASTM standard C1047 minimum requirement for a strong, durable corner. SLOK-NOS is covered with our specially engineered paper providing superior mud and paint adhesion.



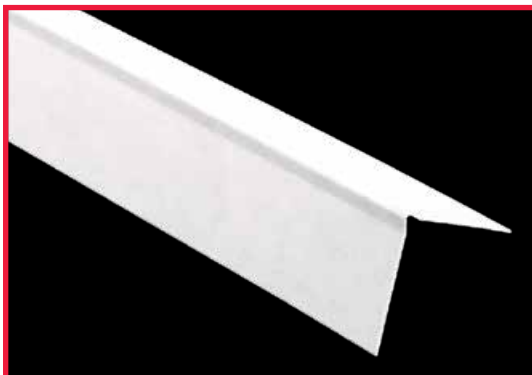
Drawing not to scale

### SIZES AND PACKAGING

#### PBN, PEN, PAN

Length	Pieces Per Carton	Cartons Per Pallet	Feet Per Carton
8'	50	56	400
9'	50	56	450
10'	50	56	500

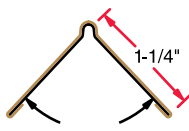
UPC labeling available upon request



**PART NUMBER: PNW14EGB**

## NAIL-ON SQUARE BEAD (PNW)

Phillips kwikSTIK® nail-on square bead is used on 90° corners for a clean professional look. This metal corner bead is covered with our specially engineered paper providing superior paint and mud adhesion. Standard flange length is 1-1/4".

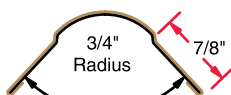


For 90° Angles

*Drawing not to scale*

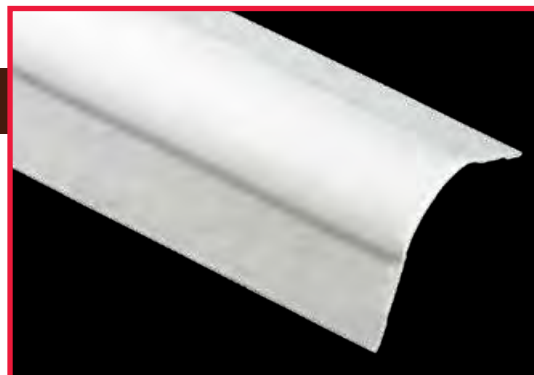
## DELUXE SOUTHWESTERN-NXW (PSD)

Phillips kwikSTIK® Deluxe Southwestern-NXW nail-on bullnose extra wide corner bead is designed for smooth, round corners where nailing or other mechanical fastening is desired. This product is an economical alternative to SLOK-NXW as it features the same fundamental properties as the SLOK-NXW except this product utilizes slightly lighter steel that meets ASTM standard C1047.

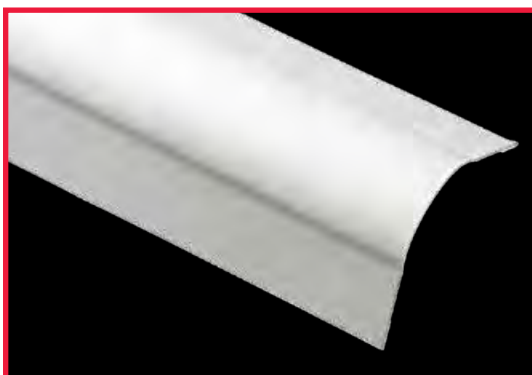


For 90° Angles

*Drawing not to scale*



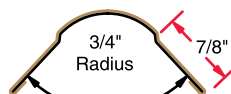
**PART NUMBER: PSD12EGB**



**PART NUMBER: PSN10EGB**

## SOUTHWESTERN-NXW (PSN)

Phillips kwikSTIK® Southwestern-NXW nail-on bullnose extra wide corner bead is designed for smooth, round corners where nailing or other mechanical fastening is desired. This product is an economical alternative to both SLOK-NXW and Deluxe Southwestern-NXW as it features the same fundamental properties as these two products except this product utilizes slightly lighter steel that does not meet ASTM standard C1047. However, this product meets all other applicable ASTM standard requirements.

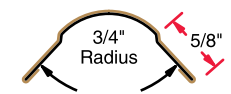


For 90° Angles

*Drawing not to scale*

## SOUTHWESTERN (PBS)

Phillips kwikSTIK® Southwestern nail-on bullnose corner bead provides a round, smooth corner where nailing or other mechanical fastening is desired. This product is an economical alternative to SLOK-N as it features the same fundamental properties as SLOK-N except this product utilizes slightly lighter steel that does not meet ASTM standard C1047. However, this product meets all other applicable ASTM standard requirements.



For 90° Angles

*Drawing not to scale*



**PART NUMBER: PBS10EGB**

### SIZES AND PACKAGING

#### PNW, PSD, PSN, PBS

Length	Pieces Per Carton	Cartons Per Pallet	Feet Per Carton
8'	50	56	400
9'	50	56	450
10'	50	56	500

UPC labeling available upon request





**SIZES AND PACKAGING**

PIC, PSI, PL1, PL5			
Length	Pieces Per Carton	Cartons Per Pallet	Feet Per Carton
8'	50	56	400
9'	50	56	450
10'	50	56	500

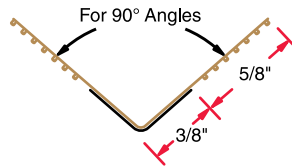
UPC labeling available upon request



PART NUMBER: PIC14EGB

**P2 (PIC)**

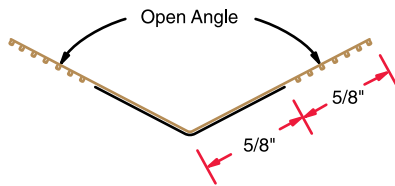
Phillips kwikSTIK® P2 tape-on inside corner trim is designed to form a true inside (90°) corner. This product features approximately 20% thicker steel than ASTM standard C1047 minimum requirement for a strong, durable corner. P2 is tape-on meaning no fasteners or nails are needed for installation. Specially engineered paper provides superior mud and paint adhesion.



Drawing not to scale

**P2-OS (PSI)**

Phillips kwikSTIK® P2-OS tape-on splay inside corner is designed for wider open angles on inside corners greater than 90°. This product features approximately 20% thicker steel than ASTM standard C1047 minimum requirement for a strong, durable corner. No fasteners or nails are needed for installation. Specially engineered paper provides superior mud and paint adhesion.



Drawing not to scale



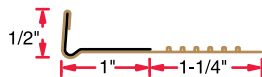
PART NUMBER: PSI14EGB



PART NUMBER: PL114EGB

**1/2" P4 L-TRIM (PL1)**

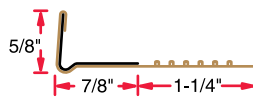
Phillips kwikSTIK® 1/2" P4 L-Trim tape-on trim is ideal where wallboard abuts with suspended ceilings, beams, plaster, masonry and concrete walls, as well as untrimmed door and window jambs. L-Trim features approximately 20% thicker steel than ASTM standard C1047 minimum requirement for a strong, durable corner. No fasteners or nails are needed for installation, and specially engineered paper provides superior mud and paint adhesion. Also available without a bead.



Drawing not to scale

**5/8" P4 L-TRIM (PL5)**

Phillips kwikSTIK® 5/8" P4 L-Trim tape-on trim is ideal where wallboard abuts with suspended ceilings, beams, plaster, masonry and concrete walls, as well as untrimmed door and window jambs. This product features approximately 20% thicker steel than ASTM standard C1047 minimum requirement for a strong, durable corner. This product is tape-on meaning no fasteners or nails are needed for installation. Specially engineered paper provides superior mud and paint adhesion. Also available without a bead.



Drawing not to scale

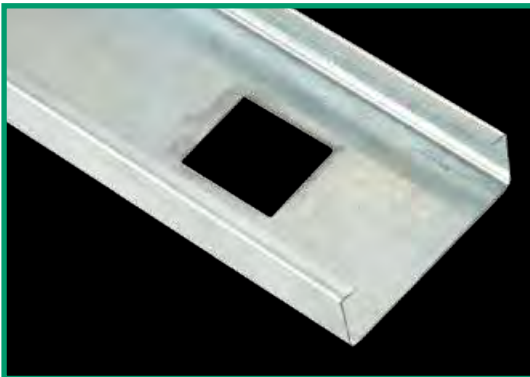


PART NUMBER: PL514EGB

### "Engineered to Perform"

#### Phillips Interior Framing Products:

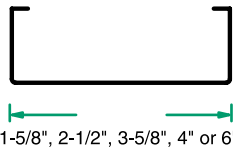
- Studs and Tracks are roll-formed from corrosion resistant galvanized steel
- Studs have pre-punched knockouts for easy installation
- Customized lengths, widths and gauges to meet all code requirements



PART NUMBER: SEE TEXT

### METAL STUDS

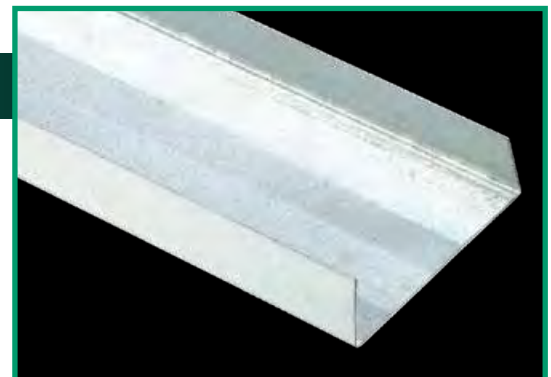
Phillips metal studs are "C" shaped metal studs fabricated from galvanized steel. The standard widths for metal studs are 1-5/8" (162S125), 2-1/2" (250S125), 3-5/8" (362S125), 4" (400S125) and 6" (600S125). Product lengths are customized based on your needs. Metal studs are available in 25, 22, 20, 18 and 16\* gauge steel for your convenience. Packaging depends on your chosen length, width and gauge; ask your sales representative for more information. For Structural Studs, see page 37. Please visit Phillips website at [www.phillipsmfg.com](http://www.phillipsmfg.com) to download Phillips Metal Studs standard packaging sheets.



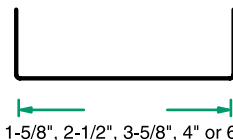
Drawing not to scale

### METAL TRACKS

Phillips metal tracks are fastened at the floor and ceiling to support the steel studs. Metal tracks are channel shaped and fabricated from galvanized steel. Phillips offers tracks in 25, 22, 20, 18 and 16 gauge steel. Hemmed track is available in 25 gauge steel. The standard widths for metal tracks are 1-5/8" (162T125), 2-1/2" (250T125), 3-5/8" (362T125), 4" (400T125) and 6" (600T125). \* Standard length is 10'; however, other lengths may be available upon request. Packaging depends on your chosen length, width and gauge; please visit Phillips website at [www.phillipsmfg.com](http://www.phillipsmfg.com) to download Phillips Metal Tracks standard packaging sheets. Deep leg track and other custom tracks available upon request; ask your sales representative for more information.



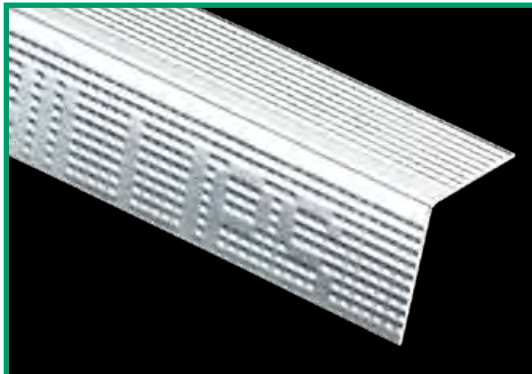
PART NUMBER: SEE TEXT



Drawing not to scale

\*1-5/8" available in 20, 22 and 25 gauge only

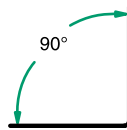
**CHANNELS**



**PART NUMBER: SEE TEXT**

**KNURLED ANGLE RUNNER 90°  
(UTILITY ANGLE)**

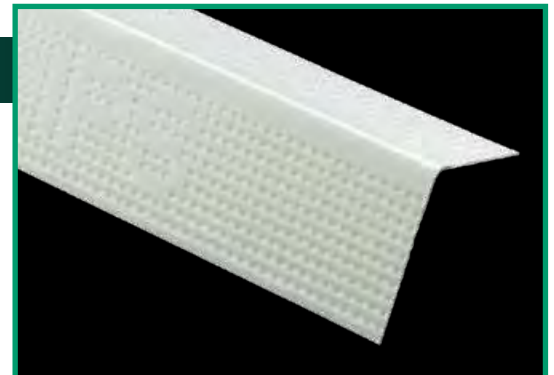
Phillips Knurled Angle Runner is a multi-purpose steel 90° angle ideal for bridging and backing around perimeters of ceiling, as a vertical attachment where gypsum partitions intersect with other surfaces, and other applications. This product is used in caged beam construction as well as in place of studs and tracks in chase walls. Apply angles as floor and ceiling runners, plus dozens of other applications. Phillips offers this product in 25, 22 and 20 gauge steel. The standard sizes are 1-1/2" x 1-1/2" (150A150) and 2" x 2" (200A200); however, Phillips provides many other custom sizes to suit all needs. Packaging depends on your custom size, gauge and length. Standard length is 10'. Also available in Weath-Ex® (see below) surface coating. For standard packaging information, please visit Phillips website at [www.phillipsmfg.com](http://www.phillipsmfg.com). For Heavy Gauge Angles, see page 38.



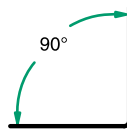
*Drawing not to scale*

**WEATH-EX® KNURLED ANGLE RUNNER**

Phillips Weath-Ex® Knurled Angle Runner is a multi-purpose steel 90° angle ideal for bridging and backing around perimeters of ceiling, as a vertical attachment where gypsum partitions intersect with other surfaces, and other applications. This product is used in caged beam construction as well as in place of studs and tracks in chase walls. Apply angles as floor and ceiling runners, plus dozens of other applications. Phillips Weath-Ex® Angle has an extra surface coating over hot-dipped galvanized material to provide extra corrosion protection. Phillips offers this product in 25, 22 and 20 gauge steel. The standard sizes are 1-1/2" x 1-1/2" (150A150-HDP) and 2" x 2" (200A200-HDP); however, Phillips provides many other custom sizes to suit all needs. Packaging depends on your custom size, gauge and length. For standard packaging information, please visit Phillips website at [www.phillipsmfg.com](http://www.phillipsmfg.com).



**PART NUMBER: SEE TEXT**



*Drawing not to scale*



**PART NUMBER: SEE TEXT**

**COLD ROLLED CHANNEL**

Phillips Cold Rolled Channel is a superior channel used for ceilings and laterally bracing studs. Also utilized for suspended ceilings and partition construction. Features tightly formed corners and consistent equal height legs to facilitate ease of installation. Phillips provides this product in both primed and hot-dipped galvanized. Phillips Cold Rolled Channel is manufactured from 16 gauge steel and is available in 3/4" (075U50) and 1-1/2" (150U50).



*Drawing not to scale*

**SIZES AND PACKAGING**

COLD ROLLED CHANNEL			
Length	Pieces Per Bundle	Bundles Per Pallet	Feet Per Bundle
10'	10	40	100
16'	10	40	160
20'	10	40	200

UPC labeling available upon request

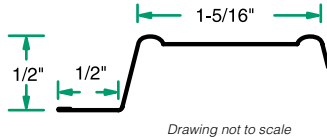




PART NUMBER: RC125HDG

### RC-1 TRU 25<sup>®</sup> GAUGE RESILIENT SOUND CHANNEL

Phillips RC-1 is a resilient sound channel designed to decrease sound transmission through wall partitions and ceilings. Phillips RC-1 Tru 25<sup>®</sup> is manufactured to exacting specifications to minimize sound transmission. Phillips RC-1 works great to prevent ridging and cracking in ceilings. RC-1 is deeply knurled for positive screw placement and to eliminate wandering. RC-1 is also available in Weath-Ex<sup>®</sup> (see below) and Standard Duty (RC1SDHDG). Lab-certified, written test results are available upon request. See below for packaging information.

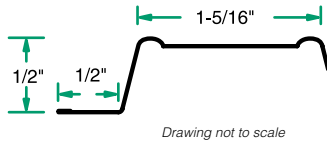


### RC-1 WEATH-EX<sup>®</sup> TRU 25<sup>®</sup> GAUGE

Phillips RC-1 Weath-Ex<sup>®</sup> Tru 25<sup>®</sup> is a resilient sound channel designed to decrease sound transmission through wall partitions and ceilings. Phillips RC-1 Weath-Ex<sup>®</sup> is manufactured to exacting specifications to minimize sound transmission. Phillips RC-1 works great to prevent ridging and cracking in ceilings. RC-1 is deeply knurled for positive screw placement and to eliminate wandering. Phillips RC-1 Weath-Ex<sup>®</sup> has an extra surface coating over hot-dipped galvanized material to provide extra corrosion protection. Lab-certified, written test results are available upon request. See below for packaging information.



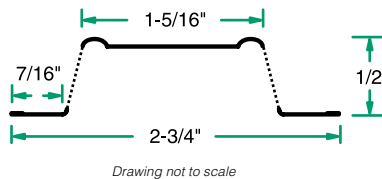
PART NUMBER: RC125HDP



PART NUMBER: RC225HDG

### RC-2 RESILIENT SOUND CHANNEL (DOUBLE LEG)

Phillips RC-2 resilient sound channel is used as cross furring members for resilient attachment of gypsum wallboard or lath on ceilings and partitions. RC-2 decreases sound transmission through wall partitions and ceilings. Channel depth is 1/2", and it is manufactured with 25 gauge galvanized steel. Lab-certified, written test results are available upon request.



#### SIZES AND PACKAGING

##### RC-1

Length	Pieces Per Bundle	Bundles Per Pallet	Feet Per Bundle
10'	20	50	200
12'	20	50	240

UPC labeling available upon request

#### SIZES AND PACKAGING

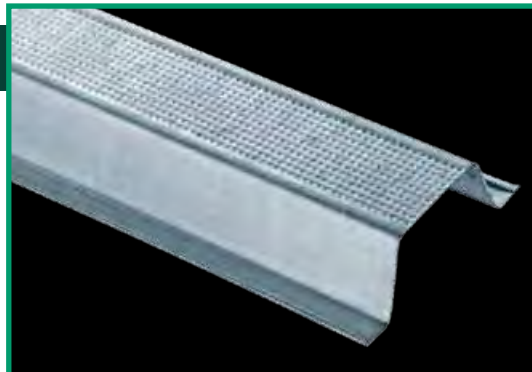
##### RC-2

Length	Pieces Per Bundle	Bundles Per Pallet	Feet Per Bundle
10'	40	42	400
12'	40	42	480

UPC labeling available upon request

**7/8" DWC HAT FURRING CHANNEL**

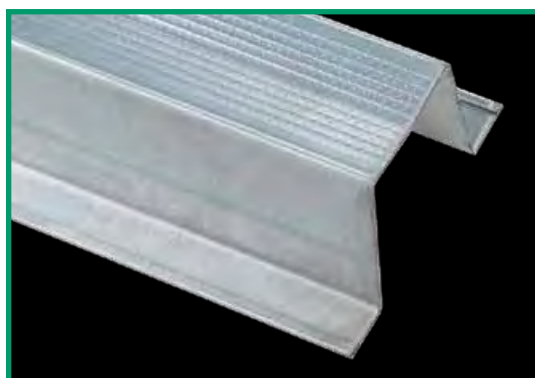
Phillips 7/8" DWC Hat Furring Channel is a ceiling and wall furring channel designed for positive clip attachment. Phillips offers this product in 25, 22 and 20 gauge steel. In 25 gauge steel, this product features hemmed edges and knurling to ensure positive screw location and eliminate wandering. The standard length is 12'; however, other lengths may be available. This product is also available in Weath-Ex® coating (see below).



**PART NUMBER: 087F125**



*Drawing not to scale*



**PART NUMBER: 150F125**

**1-1/2" DWC HAT FURRING CHANNEL**

Phillips 1-1/2" DWC Hat Furring Channel features a deeper furring channel for an increasing number of applications. Phillips offers this product in 25, 22 and 20 gauge steel for your convenience. In 25 gauge steel, this product features hemmed edges and knurling to ensure positive screw location and eliminate wandering. The standard length is 12'; however, other lengths may be available.



*Drawing not to scale*

**WEATH-EX® DWC HAT CHANNEL**

Phillips 7/8" Weath-Ex® DWC Hat Furring Channel is a ceiling and wall furring channel designed for positive clip attachment. Phillips offers this product in 25, 22 and 20 gauge steel. In 25 gauge steel, this product features hemmed edges and knurling on its face and flanges to ensure positive screw location and eliminate wandering. Phillips 7/8" Weath-Ex® DWC Hat Furring Channel has an extra surface coating over hot-dipped galvanized material to provide extra corrosion prevention. The standard length is 12'; however, other lengths may be available.



**7/8" Weath-Ex® Hat Channel**

**PART NUMBER: 087F125-HDP**

**SIZES AND PACKAGING**

**DWC HAT FURRING CHANNEL**

Product Size	Length	Pieces Per Bundle	Bundles Per Pallet	Feet Per Bundle
<b>20 GAUGE</b>				
7/8"	12'	10	45	120
1-1/2"	12'	10	45	120
<b>22 &amp; 25 GAUGE</b>				
7/8"	12'	20	45	240
1-1/2"	12'	20	45	240

UPC labeling available upon request



*Drawing not to scale*



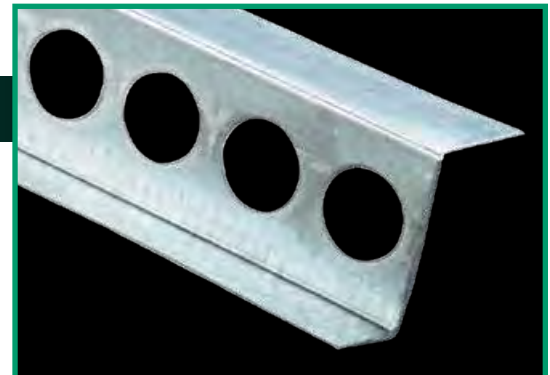
## "Engineered to Perform"

DOWNLOAD IT from PHILLIPSmfg.com:

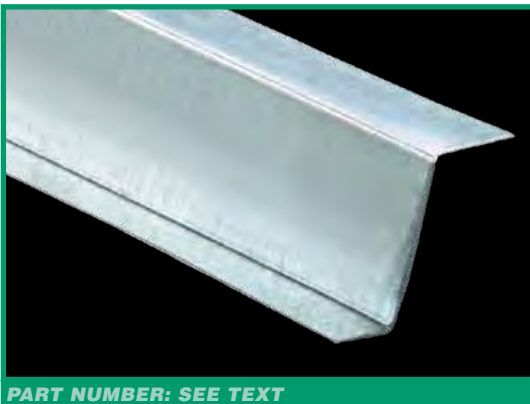
- Submittals
- Installation Recommendations
- Material Safety Data Sheets (MSDS)
- Fire Rating Information
- Assembly Drawings
- STC Information
- Detailed Packaging Sheets
- 3-Part Specifications

## Z-FURRING CHANNEL

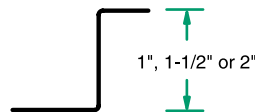
Phillips Z-Furring Channel is used to furr out interior masonry, poured concrete and other applications. This product supports insulation while providing a uniform plane for gypsum panel attachment. Phillips Z-Furring Channel is available in 1" (ZCH100), 1-1/2" (ZCH150) and 2" (ZCH200). Also, this product is available in 25, 22 and 20 gauge steel. Available without holes upon request.



PART NUMBER: SEE TEXT



PART NUMBER: SEE TEXT



*Drawing not to scale*

### SIZES AND PACKAGING

#### Z-FURRING CHANNEL (ALL SIZES)

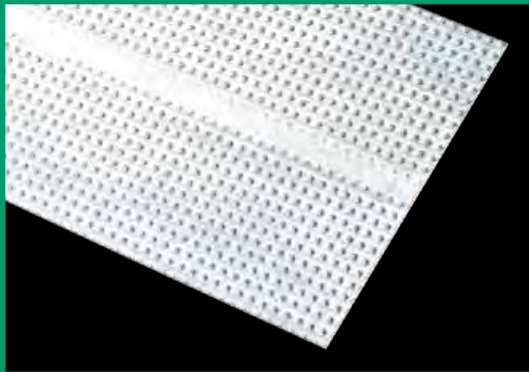
Length	Pieces Per Bundle	Bundles Per Pallet	Feet Per Bundle
<b>20 GAUGE</b>			
10'	10	60	100
12'	10	60	120
<b>22 &amp; 25 GAUGE</b>			
10'	20	60	200
12'	20	60	240

UPC labeling available upon request

***"Engineered to Perform"***

**Phillips Flat Strap:**

- Deeply knurled to eliminate screw wandering
- Variety of sizes to suit your needs



**PART NUMBER: CUSTOM**

**FLAT STRAP (FLAT STOCK)**

Phillips Flat Strap is a multi-purpose product used on a large number of applications. This product is commonly used as a backer plate to support shelves, cabinets, fixtures and handrails when installed to metal or wood framing. This product is deeply knurled for positive screw location and to eliminate wandering. Phillips offers this product in 25, 22, 20, 18 and 16 gauge steel. This product is readily available in a variety of widths and lengths to suit your needs; ask your sales representative for more information. Standard packaging is 250 pieces per pallet.

**Phillips top priority is customer satisfaction including on-time deliveries**

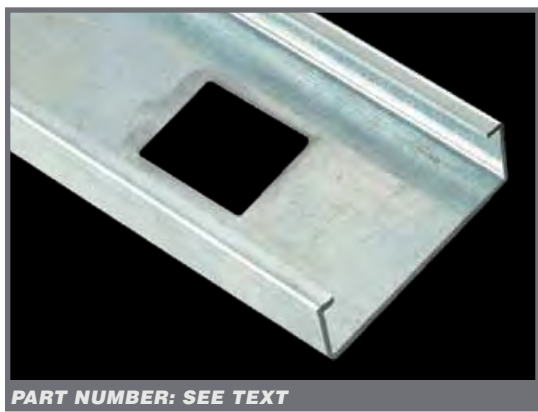




**"Engineered to Perform"**

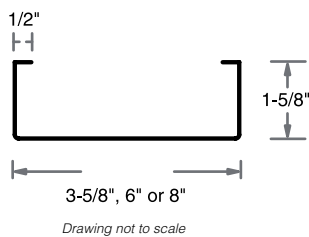
**Phillips Structural Studs & Tracks:**

- Stock stud program great for fill-ins
- Ask your Phillips sales representative or call 800.822.5055 for more information



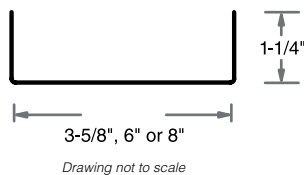
**STRUCTURAL STUDS**

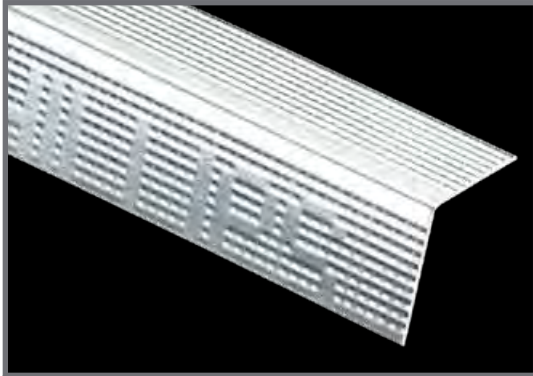
Phillips Structural Studs are "C" shaped studs fabricated from galvanized steel. Phillips offers structural studs in 16, 18 and 20 gauge steel. The standard widths for these load bearing studs are 3-5/8" (362C162), 6" (600C162) and 8" (800C162). Stock stud lengths are 10', 12', 14', 20' and 24'. Packaging depends on your chosen length, width and gauge. Other stud sizes may be available than what is depicted below; ask your sales representative for more information. For non-load bearing interior studs, please see page 31 for more information.



**STRUCTURAL TRACKS**

Phillips Structural Tracks are channel shaped and fabricated from galvanized steel. Phillips offers tracks in 16, 18 and 20 gauge steel. The standard widths for structural tracks are 3-5/8" (362T125), 6" (600T125) and 8" (800T125). Stock track length is 10'. Packaging depends on your chosen length, width and gauge. Other track leg sizes are available; ask your sales representative for more information. Metal Tracks for interior light-gauge framing are also available; see page 31 for more information.

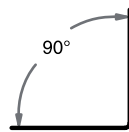




PART NUMBER: SEE TEXT

## HEAVY GAUGE ANGLE RUNNER 90° (UTILITY ANGLE)

Phillips Heavy Gauge Angle 90° or utility angle is used in a variety of applications including corner reinforcement, connection strut or angle, concrete pour stop, roof ridge angles and others. Phillips offers this product in 20, 18, 16 and 14 gauge steel. The standard sizes for this product are 2" x 2" (200A200) and 3" x 3" (300A300); however, Phillips provides other custom sizes including uneven legs to suit all needs. Standard length is 10'. Most available custom sizes of 20 and 18 gauge angle feature knurling as pictured. For lighter gauge angle products, please see Phillips Knurled Angle Runner 90° on page 32. For standard packaging information, please visit Phillips website at [www.phillipsmfg.com](http://www.phillipsmfg.com).



Drawing not to scale

## COLD ROLLED CHANNEL

Phillips Cold Rolled Channel is a superior channel used for ceilings and laterally bracing studs. Also utilized for suspended ceilings and partition construction. Features tightly formed corners and consistent equal height legs to facilitate ease of installation. Phillips provides this product in both primed and hot-dipped galvanized to suit all needs. Phillips Cold Rolled Channel is manufactured from 16 gauge steel and is available in 3/4" (075U50) and 1-1/2" (150U50).



PART NUMBER: SEE TEXT



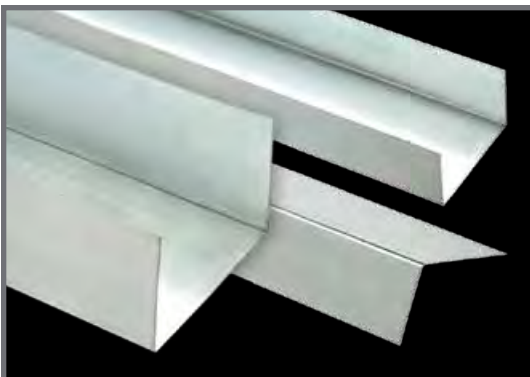
3/4" or 1-1/2"

Drawing not to scale

### SIZES AND PACKAGING

COLD ROLLED CHANNEL			
Length	Pieces Per Bundle	Bundles Per Pallet	Feet Per Bundle
10'	10	40	100
16'	10	40	160
20'	10	40	200

UPC labeling available upon request



PART NUMBER: CUSTOM

## CUSTOM FABRICATED SHAPES

Phillips custom fabricates nearly every shape, bend, angle or specialty framing component to your exact specification. Custom parts include corner angles, long and uneven leg tracks, furring channels and more. To ensure proper fabrication, Phillips requires a detailed, fully dimensioned part drawing at time of order placement. Standard length is 10'. Packaging depends on custom size, gauge and length.

Examples pictured; other shapes available

## "Engineered to Perform"

### Phillips I-Stud for Fire Rated Cavity Shaftwall/Stairwell Assemblies:

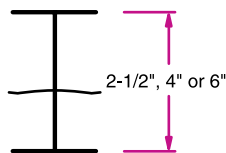
- Simple 2-piece system (unlike competitors 3-piece system)
- Tested in accordance with following ASTM standards:
  - ASTM E-119 Fire Endurance Ratings
  - ASTM E-90 Sound Transmission Loss
  - ASTM E-72 Transverse Load Test
- Listed with following nationally recognized evaluation services:
  - ICC ES, Inc. Legacy Reports: 89-35.01, 95-25B, ER-3579, ER-4924
  - UL Designs: U497, U498, U499, V433
  - Intertek (Warnock Hersey) Designs: PMC/WA 60-01, PMC/WA 120-01, PMC/WA 120-02, PMC/WA 180-01
- Additional designs and test results available at:
  - [www.PHILLIPSmfg.com](http://www.PHILLIPSmfg.com)
  - GA-600 Gypsum Association Fire Resistance Design Manual



PART NUMBER: SEE TEXT

### I-STUD

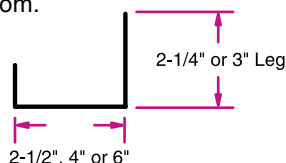
Phillips exclusive I-Stud is used with Tabbed J-Track for framing cavity shaftwalls, vertical chases and area separation walls. The tabs retain 1" shaftliner. This simplified assembly is manufactured from galvanized steel providing a lightweight advantage over masonry systems. This cost saving system is a proven performer. I-Studs are manufactured with galvanized steel. The available widths are 2-1/2" (25I-PHS), 4" (4I-PHS) and 6" (6I-PHS). Phillips offers this product in both 25 and 20 gauge steel for your convenience.\* Packaging depends on your chosen length, width and gauge; ask your sales representative for more information. For standard packaging information, please visit Phillips website at [www.phillipsmfg.com](http://www.phillipsmfg.com).



Drawing not to scale

### TABBED J-TRACK

Phillips Tabbed J-Track is used with Phillips I-Stud at floor and ceiling cavity shaftwalls, vertical chases and area separation walls. The tabs retain a 1" shaftliner. J-Track is manufactured with galvanized steel. Phillips Tabbed J-Track is available with either a 2-1/4" or 3" leg. 2-1/4" leg is available in both 25 and 20 gauge steel and 3" leg is available in 20 gauge steel. Phillips provides widths of 2-1/2" (250J), 4" (400J) and 6" (600J) to suit all needs.\* Packaging depends on your chosen length, width, leg size and gauge; ask your sales representative for more information. For standard packaging information, please visit Phillips website at [www.phillipsmfg.com](http://www.phillipsmfg.com).



Drawing not to scale



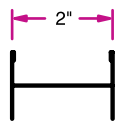
PART NUMBER: SEE TEXT

\*6" available in 20 gauge only

# AREA SEPARATION WALL

## HEMMED H-STUD

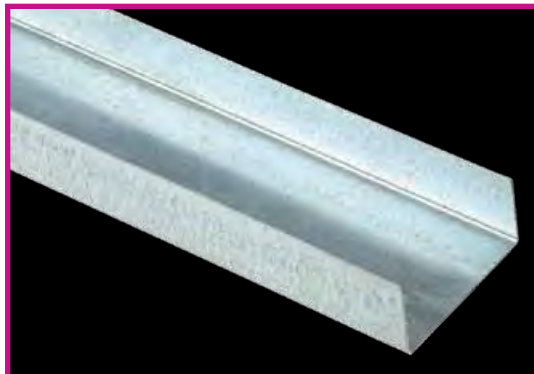
Phillips Hemmed H-Stud is a key framing component and adds structural integrity to area separation wall assemblies. This product features 2" wide vertical members which are inserted into the U-Track for framing solid partition separation walls. This product is manufactured to length for your convenience. Phillips Hemmed H-Stud follows nationally recognized evaluation service ICC ES, Inc. Legacy Report 90-26.01.



*Drawing not to scale*



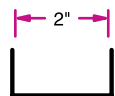
**PART NUMBER: 2HH-25HDG**



**PART NUMBER: 2U-25HDG**

## U-TRACK

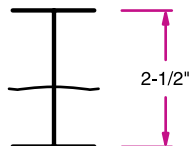
Phillips U-Track is used at the top and bottom of vertical panels to secure shaftliner panels and H-Studs in area separation wall assemblies. U-Track is fastened at the floor and ceiling to support the H-Studs. This product has a 2" width.



*Drawing not to scale*

## ASW I-STUD

Phillips ASW I-Studs are a cost effective alternative to other ASW systems in non-specified applications. For cavity shaftwall systems see Phillips I-Stud on page 39. ASW I-Studs are an easy-to-assemble area separation wall used in non-load bearing applications. This product features a 2-1/2" width and is manufactured from 25 gauge galvanized steel. Phillips ASW I-Studs are used with Phillips Tabbed J-Track; see page 39 for additional information.



*Drawing not to scale*



**PART NUMBER: 25ASW25HDG**



**PART NUMBER: ASWCLIP**

## ASW CLIPS

Phillips ASW Clips are attached to the wood or steel framing at vertical steel framing stud/wood framing intersection. ASW Clips are 2" wide with 2" x 2-1/2" legs. Packaging is 500 pieces per carton.

### SIZES AND PACKAGING

#### HEMMED H-STUD

Length	Pieces Per Bundle	Bundles Per Pallet	Feet Per Bundle
8'	10	55	80
10'	10	55	100
12'	10	55	120

#### U-TRACK

10'	10	54	100
-----	----	----	-----

### SIZES AND PACKAGING

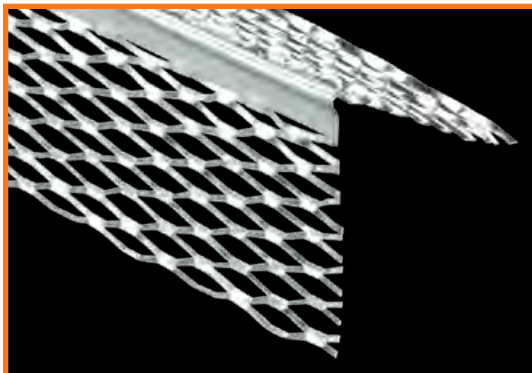
#### ASW I-STUD

Length	Pieces Per Bundle	Bundles Per Pallet	Feet Per Bundle
8'	10	50	80
10'	10	50	100
12'	10	50	120

UPC labeling available upon request

UPC labeling available upon request

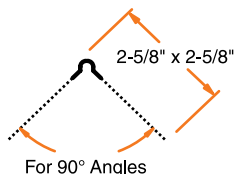




PART NUMBER: 01ECB

## #1 EXPANDED CORNER BEAD

Phillips #1 Expanded Corner Bead is designed to provide strong corner reinforcement for conventional plaster applications. A solid metal nose provides a straight, rigid ground, and the 2-5/8" flanges can be easily flexed over irregular, uneven surfaces. Easily install using standard industry practice. Plaster keys near solid nose provide reinforcement where needed most to ensure straight corners. Phillips offers this product in both galvanized steel and zinc.

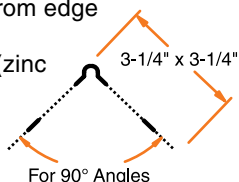


For 90° Angles

Drawing not to scale

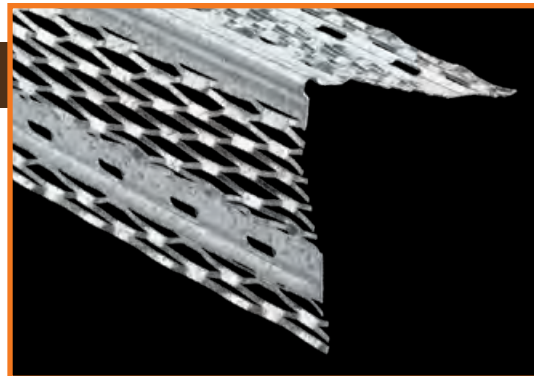
## #33 WIDE EXPANDED FLANGE BEAD

Phillips #33 Wide Expanded Flange Bead provides additional rigidity and strength with its reinforced flanges. This product is for use on masonry, beams and column fireproofing. Combination of expanded flanges and pronounced bead nose ensures successful corner alignment and efficient plaster keying from edge to nose. Manufactured with full stiffening ribs to enhance durability. This product is produced with galvanized steel (zinc available special order, minimum quantities may apply).

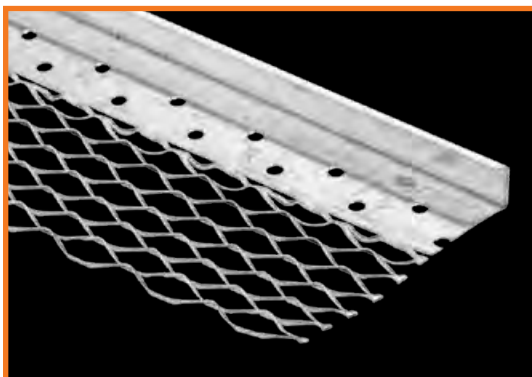


For 90° Angles

Drawing not to scale



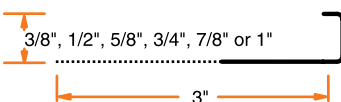
PART NUMBER: 33WFC



PART NUMBER: 66EFC

## #66 EXPANDED FLANGE SQUARE CASING

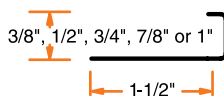
Phillips #66 Expanded Flange Square Casing is designed as a universal plaster stop used at wall terminations, door and window openings and intersections. This product protects edges from damage and helps cover shrinkage cracks. The expanded flange grounds 3/8", 1/2", 5/8", 3/4", 7/8" or 1" (1-1/4" and 1-1/2" special order, minimum quantities may apply). Phillips offers #66 Expanded Flange in both galvanized steel or zinc. Also available with weep holes.



Drawing not to scale

## #66 SHORT FLANGE SQUARE CASING

Phillips #66 Short Flange Square Casing provides a short 90 degree return at plaster surface which serves as a plastering stop to ensure a neat finish. Phillips #66 Short Flange Square Casing's perforated flanges aid attachment and plaster keying. This product features short and solid flanges for those who prefer it. This product is available with 3/8", 1/2", 3/4", 7/8" or 1" grounds (1-1/4" and 1-1/2" special order, minimum quantities may apply). Available with either galvanized steel or zinc (minimum quantities may apply for zinc). Also available with weep holes.



Drawing not to scale



PART NUMBER: 66SFC

### SIZES AND PACKAGING

#### #66 SHORT & EXPANDED FLANGE (STANDARD SIZES)

Length	Pieces Per Carton	Cartons Per Pallet	Feet Per Carton
10'	30	42	300

UPC labeling available upon request

### SIZES AND PACKAGING

#### #1 & #33

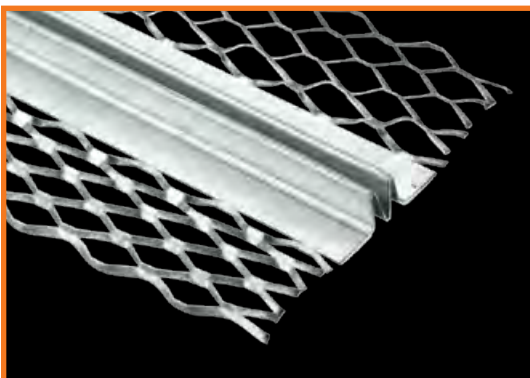
Length	Pieces Per Carton	Cartons Per Pallet	Feet Per Carton
8'	40	28	320
9'	30	28	270
10'	30	28	300
12'	30	28	360

UPC labeling available upon request



## "Engineered to Perform"

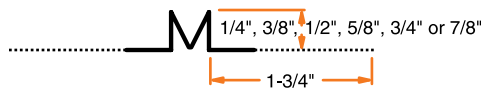
Phillips uses the latest technologies and equipment to ensure our products are "Engineered to Perform"



PART NUMBER: 15ECJ

### #15 DOUBLE V EXPANSION JOINT

Phillips #15 Double V Expansion Joint relieves the stresses of expansion and contraction associated with natural shrinkage during stucco curing and basic thermal changes. Phillips #15 minimizes cracking in large plaster areas and provides ground to assure proper plaster or stucco thickness. Expanded flanges allow for quality keying. Phillips offers this product in 1/4", 3/8", 1/2", 5/8", 3/4" and 7/8". Phillips #15 is available in either galvanized steel or zinc.



Drawing not to scale



### SIZES AND PACKAGING

#### #15 (1/4", 3/8")

Length	Pieces Per Carton	Cartons Per Pallet	Feet Per Carton
10'	24	42	240

#### #15 (1/2", 5/8", 3/4", 7/8")

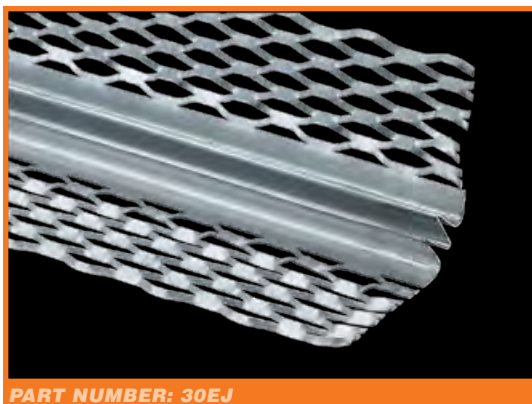
10'	24	42	240
-----	----	----	-----

UPC labeling available upon request

### "Engineered to Perform"

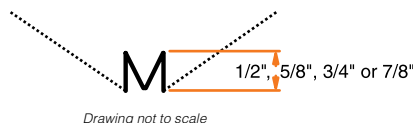
#### Phillips Stucco, Veneer & Plaster Accessories:

- Strong, durable finishes resistant to dents, gouges, abrasions and scuffs
- Expanded flanges and rigid pronounced edges provide quality keying, exacting grounds and superior bonding
- Control joints minimize cracking



### #30 DOUBLE V CORNER EXPANSION JOINT

Phillips #30 Double V Inside Corner Expansion Joint, similar in design to the #15 Double V, serves to relieve stress and control cracks at wall-to-wall junctions or where different planes abut. Expanded flanges allow for quality keying. Phillips #30 is available in 1/2", 5/8", 3/4" or 7/8" with your choice of galvanized steel or zinc.



#### SIZES AND PACKAGING

##### #30 (ALL SIZES)

Length	Pieces Per Carton	Cartons Per Pallet	Feet Per Carton
10'	24	40	240

UPC labeling available upon request

### #40 EXPANSION JOINT

Phillips #40 Expansion Joint controls stresses in walls, ceilings, abutments, columns and partitions. Material will expand and contract from 1/4" to 5/8" openings. This two-piece versatile product works great with a variety of applications. Phillips offers this product in 1/2", 3/4" and 7/8" ground heights for your convenience with your choice of galvanized steel or zinc.



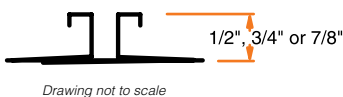
PART NUMBER: 40ECJ

#### SIZES AND PACKAGING

##### #40 (ALL SIZES)

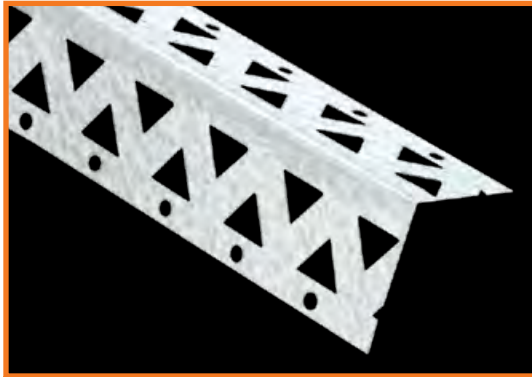
Length	Pieces Per Carton	Cartons Per Pallet	Feet Per Carton
10'	15	25	150

UPC labeling available upon request



# VENEER BEADS AND TRIMS

STUCCO, VENEER  
& PLASTER BEADS & TRIMS



PART NUMBER: KALZRC

## KAL-KORNER® BEAD

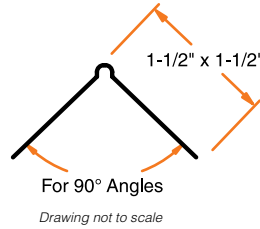
Phillips Kal-Korner® bead is formed of galvanized steel to protect exterior corners with veneer plastering. Install using standard industry practice. This product is an alternative to the Mini Veneer Bead and a proven performer. Also can be used in interior plaster applications.

### SIZES AND PACKAGING

#### KAL-KORNER® BEAD

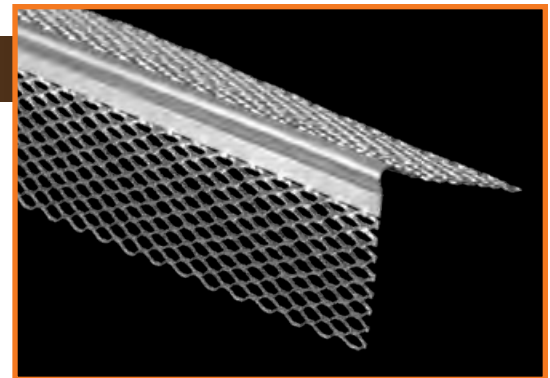
Length	Pieces Per Carton	Cartons Per Pallet	Feet Per Carton
8'	80	28	640
9'	60	28	540
10'	60	28	600
12'	60	28	720

UPC labeling available upon request



## MINI VENEER BEAD

Phillips Mini Veneer Bead features fine mesh formed from hot-dipped galvanized steel to ensure clean, straight edges with veneer plastering. This product provides strong, durable finishes resistant to dents, gouges, abrasions and scuffs. Fully expanded flanges and rigid pronounced edges provide quality keying, superior bonding and eliminate shadowing. Install using standard industry practice.



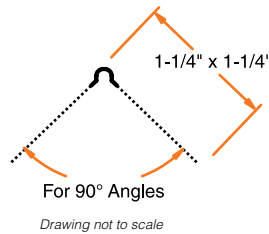
PART NUMBER: EVCHDG

### SIZES AND PACKAGING

#### MINI VENEER BEAD

Length	Pieces Per Carton	Cartons Per Pallet	Feet Per Carton
8'	60	25	480
10'	60	25	600

UPC labeling available upon request



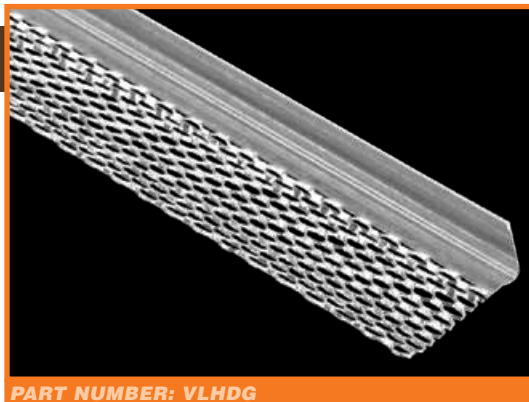
Vinyl Corner Bead

## "Engineered to Perform Tip"

Phillips gripSTIK® vinyl products work great for interior veneer applications. See pages 13-21 for available gripSTIK® vinyl products.

## L-TRIM CASING BEAD

Phillips veneer L-Trim Casing Bead finishes edges at door and window jambs and features a hemmed edge for easy installation. This product features fully expanded mini-mesh for quality keying. Phillips offers this galvanized steel product in both 1/2" and 5/8" for your convenience.



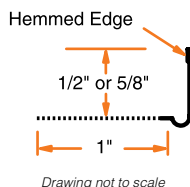
**PART NUMBER: VLHDG**

### SIZES AND PACKAGING

#### L-TRIM (ALL SIZES)

Length	Pieces Per Carton	Cartons Per Pallet	Feet Per Carton
10'	50	60	500

UPC labeling available upon request



*Drawing not to scale*



**PART NUMBER: VJHDG**

## J-TRIM CASING BEAD

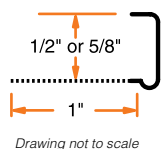
Phillips veneer J-Trim Casing Bead finishes edges at door and window jambs by slipping over the edge of plaster base. This galvanized steel product features a mini-mesh flange for plaster keying. Phillips offers this galvanized steel product in both 1/2" and 5/8" to suit many needs.

### SIZES AND PACKAGING

#### J-TRIM (ALL SIZES)

Length	Pieces Per Carton	Carton Per Pallet	Feet Per Carton
10'	50	63	500

UPC labeling available upon request



*Drawing not to scale*

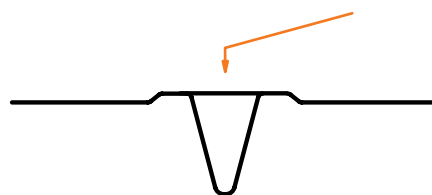
## 093 EXPANSION CONTROL JOINT

Phillips 093 zinc expansion control joints are manufactured from the highest quality solid zinc coil stock for superior corrosion resistance. An excellent product for interior or exterior applications, Phillips 093 expansion control joints relieve stresses of expansion and contraction across ceilings and wall areas. The opening is protected by plastic tape which can be removed after joint compound or plaster has been applied. Perforated flanges for excellent joint compound adhesion as the joint compound penetrates through the flanges to the wallboard for long lasting adhesion. The perforated flanges also allow for faster drying. This product fits standard 1/4" openings.



**PART NUMBER: ECJ093ZNC**

Removable Tape



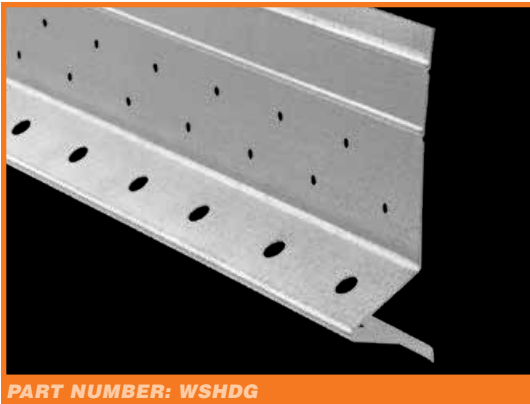
*Drawing not to scale*

### SIZES AND PACKAGING

#### 093 EXPANSION CONTROL JOINT

Length	Pieces Per Carton	Cartons Per Pallet	Feet Per Carton
10'	25	20	250

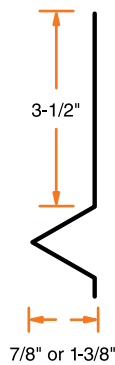
UPC labeling available upon request



PART NUMBER: WSHDG

## #7 FOUNDATION WEEP SCREED

Phillips #7 Foundation Weep Screed provides a stucco stop and screed at the sill plate line in exterior stucco applications. This product features a 3-1/2" nailing flange which serves as a straight-edge stop at the sill plate line and flashing when water-resistant paper or paperbacked lath is installed over flange. Phillips #7 Foundation Weep Screed is punched with holes which enable keying as well as moisture weeping. This galvanized steel product is available in 7/8" and 1-3/8" grounds (1/2", 5/8", 3/4" and 1" special order, minimum quantities may apply).\*



Drawing not to scale

### SIZES AND PACKAGING

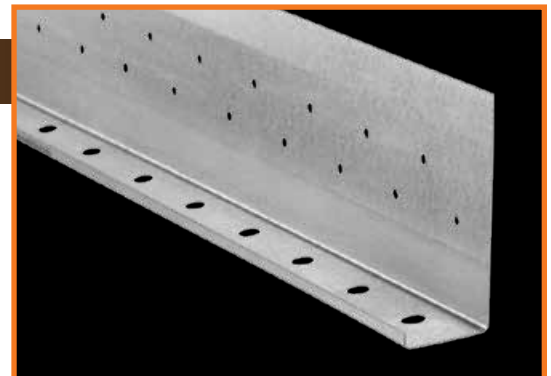
#### #7 FOUNDATION WEEP SCREED\*

Length	Pieces Per Bundle	Bundles Per Pallet	Feet Per Bundle
10'	10	50	100

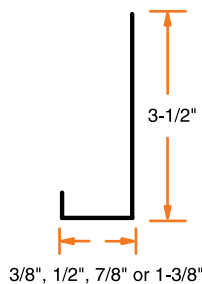
UPC labeling available upon request

## J-WEEP

Phillips J-Weep is a versatile product used in several applications. J-Weep is commonly used as a casing bead or plaster stop in stucco applications. The punched weep holes allow for usage as a sill weep screed in exterior stucco applications. This product features a 3-1/2" nailing flange meeting applicable code requirements. Perforated flanges aid attachment and plaster keying. This galvanized steel product is available in 3/8", 1/2", 7/8" and 1-3/8" grounds.



PART NUMBER: JWHDG



Drawing not to scale

### SIZES AND PACKAGING

#### J-WEEP

Length	Pieces Per Bundle	Bundles Per Pallet	Feet Per Bundle
10'	10	50	100

UPC labeling available upon request

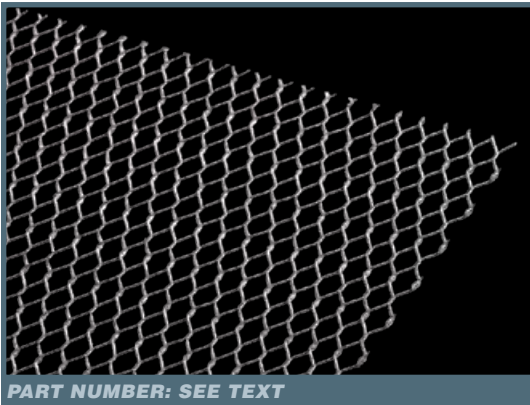
\*Packaging of special order grounds may vary



**"Engineered to Perform"**

**Phillips Metal Lath:**

- Manufactured to specified weight with hot-dipped galvanized steel
- Use with complete confidence in all applications



PART NUMBER: SEE TEXT

**DIAMOND MESH LATH**

Phillips Diamond Mesh Lath is used as a plaster base and reinforcement on almost all types of walls and ceilings, over wood or steel framing, flat or curved surfaces. Widely used as a reinforcement for base coat in ceramic tile work. Diamonds are 5/16" wide. This product features a hot-dipped galvanized finish. Available in 1.75 (175GLHDG), 2.0 (20GLHDG), 2.5 (25GLHDG) and 3.4 (34GLHDG).

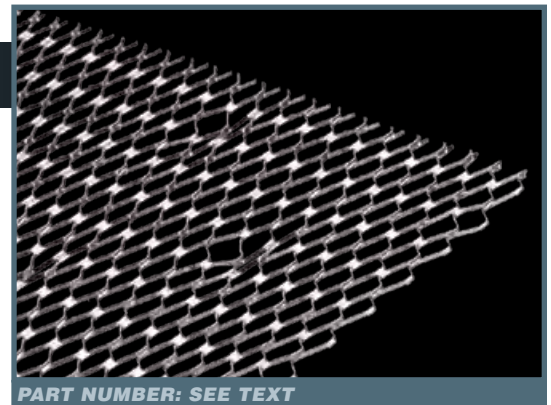
**SIZES AND PACKAGING**

DIAMOND MESH LATH				
Std Wt./ Sq. Yd.	Sheet Size	Pieces Per Bundle	Bundles Per Pallet	Sq. Yds. Per Bundle
1.75	27" x 96"	10	50	20
2.0	27" x 96"	10	50	20
2.5	27" x 96"	10	50	20
3.4	27" x 96"	10	50	20

UPC labeling available upon request

**SELF-FURRING DIAMOND MESH LATH**

Phillips Self-Furring Diamond Mesh Lath is used extensively in stucco work as plaster reinforcement over interior masonry walls as well as in steel column fireproofing. Widely used as a reinforcement for base coat in ceramic tile work. The self-furring dimples hold the metal lath 1/4" away from the surface to be plastered. This product features a hot-dipped galvanized finish. Available in 1.75 (175SLHDG), 2.0 (20SLHDG), 2.5 (25SLHDG) and 3.4 (34SLHDG).



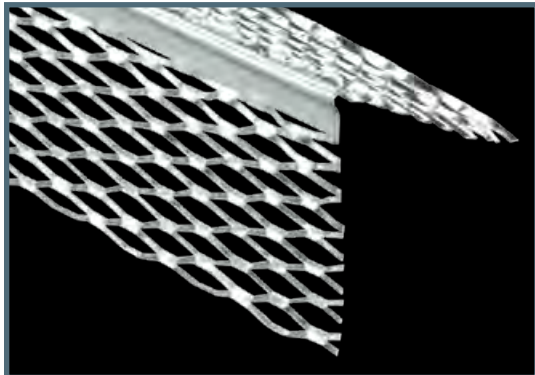
PART NUMBER: SEE TEXT

**SIZES AND PACKAGING**

SELF-FURRING MESH LATH				
Std Wt./ Sq. Yd.	Sheet Size	Pieces Per Bundle	Bundles Per Pallet	Sq. Yds. Per Bundle
1.75	27" x 96"	10	25	20
2.0	27" x 96"	10	25	20
2.5	27" x 96"	10	25	20
3.4	27" x 96"	10	25	20

UPC labeling available upon request

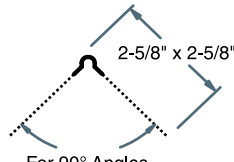
**"Engineered to Perform"**  
 For complete offering of Stucco, Veneer & Plaster Beads & Trims see pages 41-46



PART NUMBER: 01ECB

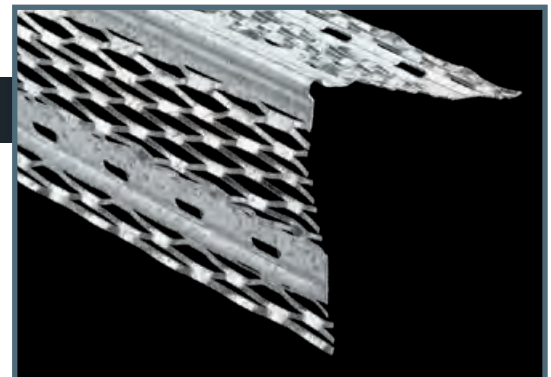
**# 1 EXPANDED CORNER BEAD**

Phillips #1 Expanded Corner Bead is designed to provide strong corner reinforcement for conventional plaster applications. A solid metal nose provides a straight, rigid ground, and the 2-5/8" flanges can be easily flexed over irregular, uneven surfaces. Plaster keys near solid nose provide reinforcement where needed most to ensure straight corners. Phillips offers this product in both galvanized steel and zinc.



For 90° Angles

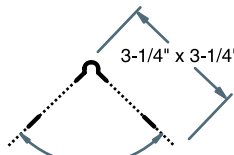
Drawing not to scale



PART NUMBER: 33WFC

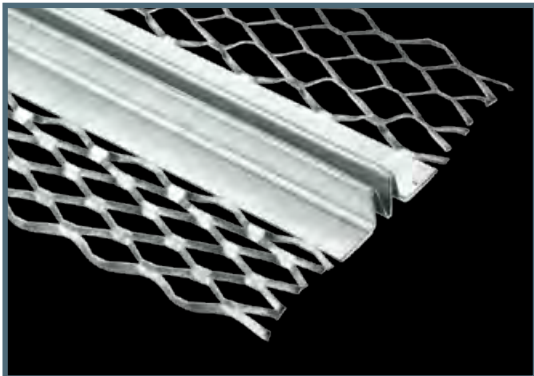
**# 33 WIDE EXPANDED FLANGE BEAD**

Phillips #33 Wide Expanded Flange Bead provides additional rigidity and strength with its reinforced flanges. This product is for use on masonry, beams and column fireproofing. Combination of expanded flanges and pronounced bead nose ensures successful corner alignment and efficient plaster keying from edge to nose. Manufactured with full stiffening ribs to enhance durability. This product is produced with galvanized steel (zinc available special order, minimum quantities may apply).



For 90° Angles

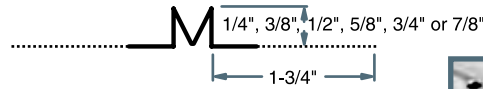
Drawing not to scale



PART NUMBER: 15ECJ

**# 15 DOUBLE V EXPANSION JOINT**

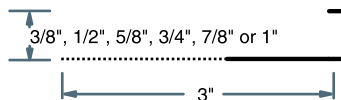
Phillips #15 Double V Expansion Joint relieves the stresses of expansion and contraction associated with natural shrinkage during stucco curing and basic thermal changes. Phillips #15 minimizes cracking in large plaster areas and provides ground to assure proper plaster or stucco thickness. Expanded flanges allow for quality keying. Phillips provides this product in 1/4", 3/8", 1/2", 5/8", 3/4" and 7/8". Phillips #15 is available in either galvanized steel or zinc.



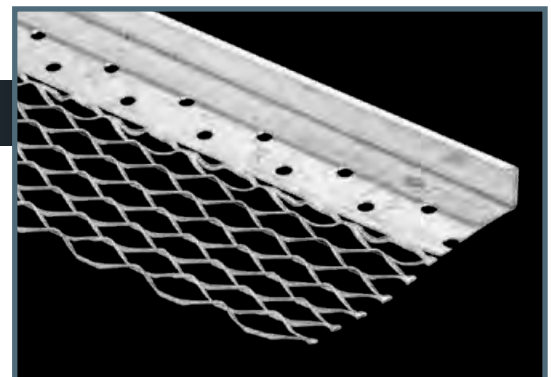
Drawing not to scale

**# 66 EXPANDED FLANGE SQUARE CASING**

Phillips #66 Expanded Flange Square Casing is designed as a universal plaster stop used at wall terminations, door and window openings and intersections. This product protects edges from damage and helps cover shrinkage cracks. The expanded flange grounds 3/8", 1/2", 5/8", 3/4", 7/8" or 1" (1-1/4" and 1-1/2" special order, minimum quantities may apply). Phillips offers #66 Expanded Flange in both galvanized steel or zinc. Also available with weep holes.



Drawing not to scale



PART NUMBER: 66EFC

#66 Short Flange Square Casing also available (see page 41 for details)





## COLOR GUIDE

Black

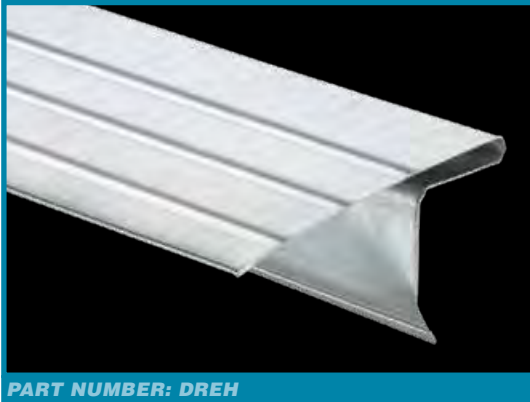
Galvanized

Bronze

Brown

White

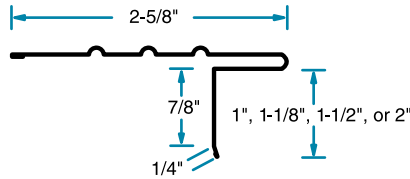
Actual colors may vary



PART NUMBER: DREH

## STYLE D ROOF EDGE

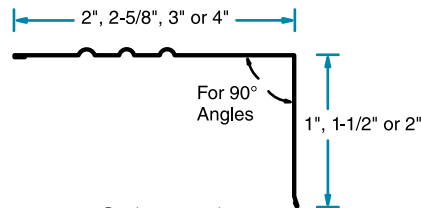
Phillips EDGEmaster™ Style D Roof Edge is designed to protect and cover the exposed edge of the roof line. This product helps prevent water backup under the shingles and protects roofing from water damage along the entire eave. This product features hemmed edges for easy installation. Packaging is 25 pieces per carton and 10' is standard length.



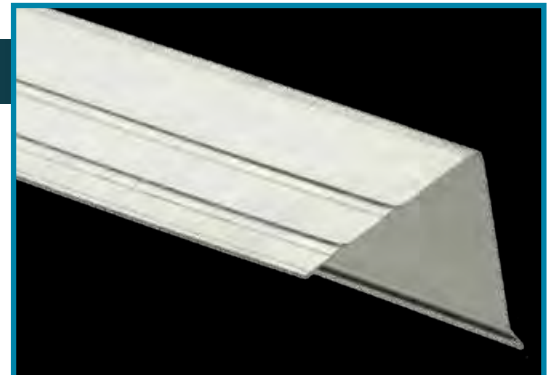
Drawing not to scale

## ROOF EDGE

Phillips EDGEmaster™ Roof Edge is designed to protect and cover the exposed edge of the roof line. This product helps prevent water backup under the shingles and protects roofing from water damage along the entire eave. Available in a variety of sizes; visit [www.phillipsmfg.com](http://www.phillipsmfg.com) for a listing of part numbers. This product features hemmed edges for easy installation. Packaging is 25 pieces per carton and 10' is standard length.



Drawing not to scale



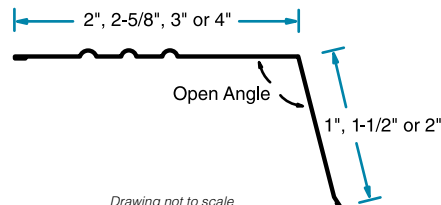
PART NUMBER: RE



PART NUMBER: GA

## GUTTER APRON

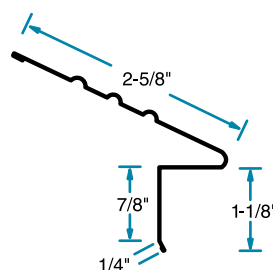
Phillips EDGEmaster™ Gutter Apron is used to direct water into the gutter system by directing rain water run-off to drip away from fascia. This product is installed over the roof edge and extends into the gutter. Available in a variety of sizes; visit [www.phillipsmfg.com](http://www.phillipsmfg.com) for a listing of part numbers. This product features hemmed edges for easy installation. Packaging is 25 pieces per carton and 10' is standard length.



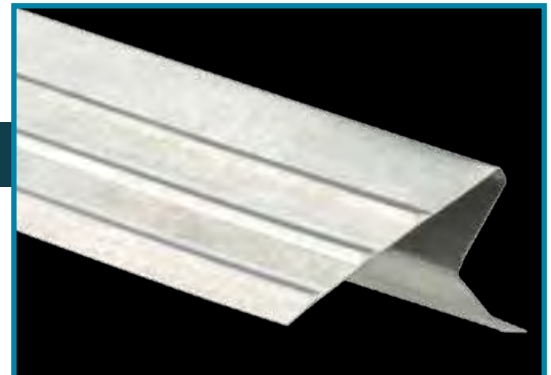
Drawing not to scale

## EAVE DRIP

Phillips EDGEmaster™ Eave Drip is designed to direct water into the gutter system by directing rain water run-off to drip away from fascia. This product is installed over the roof edge and extends into the gutter. This product features hemmed edges for easy installation. Packaging is 25 pieces per carton and 10' is standard length.

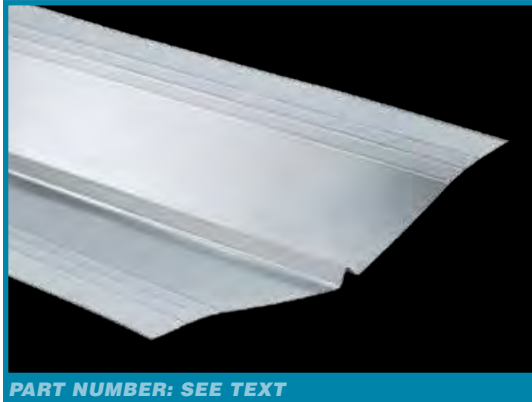


Drawing not to scale



PART NUMBER: DGA

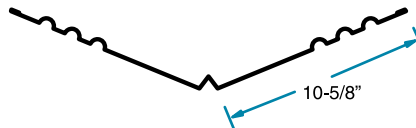




PART NUMBER: SEE TEXT

**W-VALLEY**

Phillips EDGEmaster™ W-Valley is used in the roof valley area to channel water down into the gutters. This product features a small ridge in the middle to prevent run-off rain from running down one side of the roof and splashing up under shingles on the opposing side. This product is available in 24" (WV24) as shown below, 20" (WV20) and 18" (WV18).



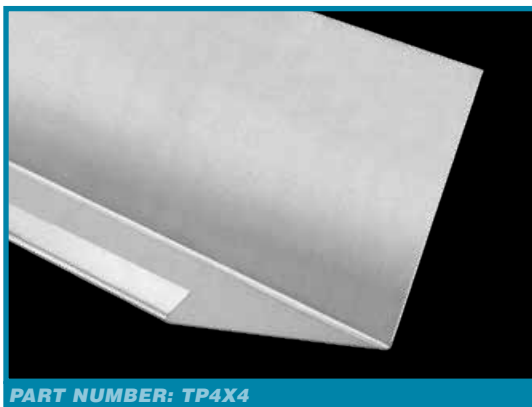
*Drawing not to scale*  
24" shown; other sizes available

**ROLL FLASHING**

Phillips EDGEmaster™ Roll Flashing is used for custom flashing and do-it-yourself projects. This product adds a customized look to any dormer or flashing piece. Available in a variety of colors (see color guide). Up to 24" width available. Standard widths are 24" (RF2400), 20" (RF2000), 18" (RF1800), 16" (RF1600), 14" (RF1400), 12" (RF1200), 10" (RF1000), 8" (RF800), 6" (RF600) and 4" (RF400). 10', 25' and 50' length rolls.



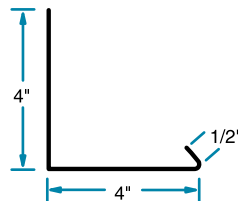
PART NUMBER: SEE TEXT



PART NUMBER: TP4X4

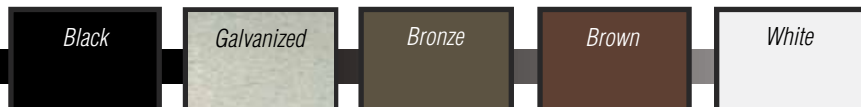
**TILE PAN**

Phillips EDGEmaster™ Tile Pan works great as flashing around chimneys and other applications. Available in a variety of colors (see color guide). Packaging is 10 pieces per bundle.



*Drawing not to scale*

**COLOR GUIDE**

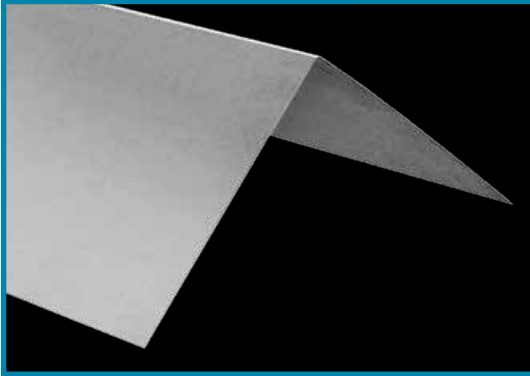


*Actual colors may vary*

# "Engineered to Perform"

## Phillips Roofing Metals:

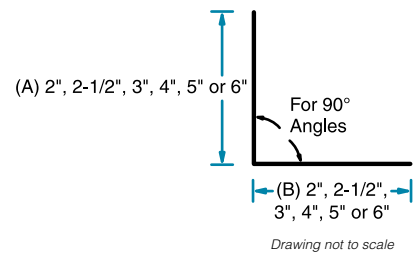
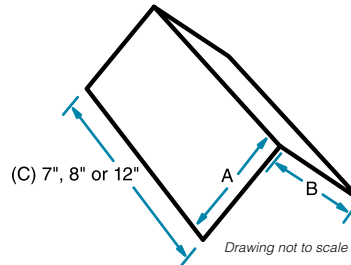
- Wide selection of colors available
- Produced with the highest material and fabrication standards
- Many products feature hemmed edges
- Made with high quality steel for superior performance



PART NUMBER: SF

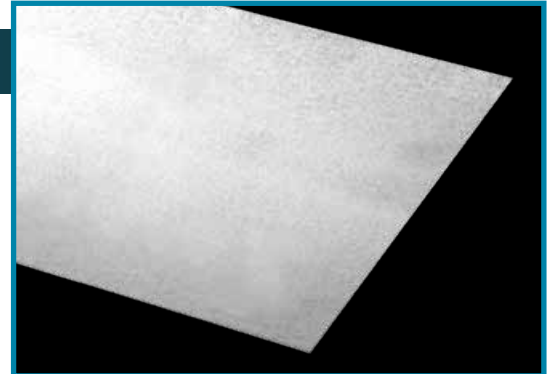
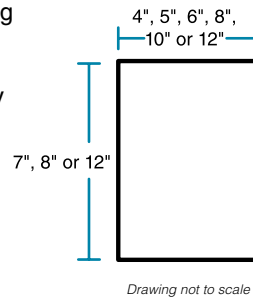
## STEP FLASHING

Phillips EDGEmaster™ Step Flashing is used on the side of a shingle when it meets a vertical termination such as a wall, chimney or other termination. The product helps prevent water from entering between the shingle and the termination. Step Flashing is pre-bent for easy installation. Available in a variety of sizes and colors (see color guide). Packaging is 10 pieces per bundle and 100 per carton.

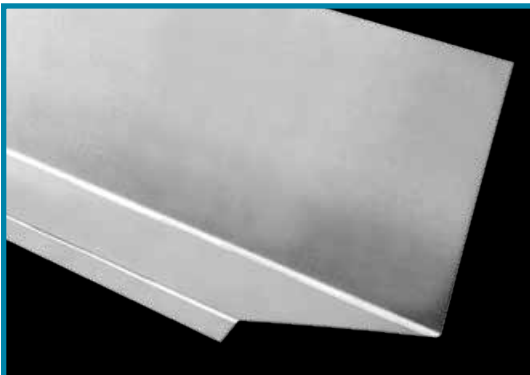


## FLAT FLASHING SHINGLES

Phillips EDGEmaster™ Flat Flashing Shingles are utility roofing metal products used in a variety of flashing applications. This product can be bent on the job to fit custom or fill in flashing requirements. Flat Flashing Shingles are available in a variety of sizes and colors (see color guide). Packaging is 10 pieces per bundle.



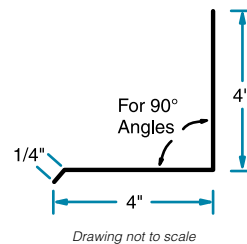
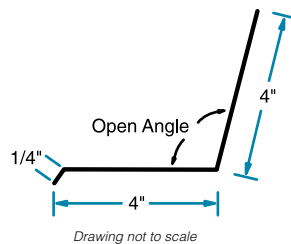
PART NUMBER: FF



PART NUMBER: SEE TEXT

## WALL FLASHING

Phillips EDGEmaster™ Wall Flashing is designed to prevent the entry of water into the wall. Wall flashing is typically found at interruptions in the wall, such as windows and points of structural support. This product works great to prevent top edge of window or door openings from water infiltration. Wall Flashing is available in open angle (WF120) and regular (WF90-for 90° angles). Available in a variety of sizes and colors (see color guide). Packaging is 10 pieces per bundle.



#1 Expanded Corner Bead.....	41,48	E-Z Strip® Expansion Joint .....	17
#15 Double V Expansion Joint.....	42,48	Expanded Corner Bead #1 .....	41
#30 Double V Corner Expansion Joint.....	43	Expansion Joint #15 .....	42
#33 Wide Expanded Flange Bead.....	41,48	Expansion Joint #30 .....	43
#40 Expansion Joint .....	43	Expansion Joint #40 .....	43
#66 Expanded Flange Square Casing.....	41,48	Expansion Joint 093 .....	12,45
#66 Short Flange Square Casing .....	41,48	Expansion Joint E-Z Strip® (Vinyl) .....	17
093 Expansion Joint .....	12,45		
2-Way Inside Corner Cap .....	19		
3-Way Corner Cap.....	18		
3-Way Splay Corner .....	18		
		<b>F</b>	
		Fire Rated Assemblies.....	39-40
		First Choice Metal Corner Bead .....	6-7
		Flashing.....	50-51
		Flat Flashing Shingles .....	51
		Flat L-Tear Strip .....	21
		Flat Stock.....	36
		Flat Strap.....	36
		Foundation Weep Screenshot .....	46
		Furring Channels .....	34-35
		<b>G</b>	
		gripSTIK® Vinyl Products .....	13-22
		<b>H</b>	
		H-Stud .....	40
		Hat Channel.....	34
		Heavy Gauge Angle Runner.....	38
		Hemmed Furring Channel .....	34
		Hemmed H-Stud.....	40
		Hemmed Track.....	31, 39-40
		High Hat Channel .....	34
		Hot-Dipped Galvanized Corner Bead .....	6-10
		<b>I</b>	
		I-Studs .....	39-40
		Inside Corner Adjustable .....	17
		Inside Corner Bead	
		Paper Faced .....	30
		Vinyl .....	16-17
		Installation Products .....	22
		Interior Framing .....	31-36
		<b>J</b>	
		J-Round .....	10
		J-Track .....	39
		J-Trim.....	12, 20, 45
		J-Weep .....	46
		<b>K</b>	
		Kal-Korner® Bead .....	44
		Kerfed Bullnose	
		Metal .....	10
		Vinyl .....	16
		klinchSTIK® Metal Corner Bead .....	6
		Knurled Angle Runner .....	32
		kwikSTIK® Paper Faced Products.....	23-30
		<b>L</b>	
		L-Tear Strip.....	21
		L-Trim	
		Metal .....	11
		Paper Faced .....	30
		<b>A</b>	
Adaptors .....	19		
Adjustable Inside Corner .....	17		
Angle Flashing.....	50-51		
Archway Corner Bead (Arch Bead) .....	13,15		
Area Separation Walls .....	40		
ASTM .....	54		
ASW I-Studs .....	40		
		<b>B</b>	
		Backing Plate .....	36
		Base Flashing.....	51
		Bullnose Corner Bead	
		Metal .....	8-10
		Paper Faced .....	26-29
		Vinyl.....	14-16
		Bullnose Corner & Transition Caps.....	18-19
		Bullnose J-Round .....	10
		<b>C</b>	
C-Studs.....	31		
Casing Bead .....	41, 45,48		
Channels .....	32-35, 38		
Clips.....	40		
Cold Rolled Channels .....	32, 38		
Control Joints .....	12, 17, 42-43,45,48		
Corner Beads			
Metal .....	6-10		
Paper Faced .....	23-29		
Stucco .....	41,48		
Veneer .....	44-45		
Vinyl.....	13-16		
Corner Trim.....	22		
Custom Fabricated Shapes .....	38		
Customer Service and Care .....	2-4		
		<b>D</b>	
Diamond Mesh Lath .....	47		
Double V Corner Expansion Joint .....	43		
Drywall Furring Channel.....	34-35		
Drywall Hemmed Track.....	31, 39-40		
Drywall Studs.....	31, 39-40		
Drywall Tape .....	22		
Drywall Track .....	31, 39-40		
		<b>E</b>	
Eave Drip.....	49		
Edge Metal .....	49-51		

Veneer .....45  
 Vinyl.....20  
 Lath.....47-48  
 LEED® Certification .....55  
 Long-Leg L-Trim ..... 11

**M**

Material Certification .....54  
 MAX-Flex® Archway ..... 13, 15, 20  
 Mesh Lath.....47  
 Metal Angle Runner .....32  
 Metal Beads & Trims ..... 6-12  
 Metal Corner Beads .....6-10  
 Metal Framing.....31  
 Metal Lath.....47-48  
 Metal Studs .....31, 39-40  
 Metal Track .....31, 39-40  
 Metal Trims ..... 11-12  
 Mini Bullnose .....14-15  
 Mini Veneer Bead .....44  
 Mud Hopper.....22, 25  
 Mudable Trims ..... 11

**N**

Nail-On Paper Faced Beads..... 28-29  
 Nail-On Square Bead .....29  
 Nonload Bearing..... 31, 39-40  
 Nonstructural Framing .....31, 39-40  
 Nonstructural Studs.....31, 39-40

**O**

Open Angle Splay Corner Bead  
 Metal .....7, 9  
 Paper Faced .....25-28, 30  
 Vinyl..... 13, 15

**P**

Pan Flashing.....50  
 Paper Faced Flexible Corner Trim .....22  
 Paper Faced Metal Corner Beads ..... 23-29  
 Paper Faced Metal Products..... 23-30  
 Paper Faced Metal Trims .....30  
 Partition Angle ..... 32, 38  
 Phillips Advantage .....3  
 Plant Locations ..... 2-3  
 Plaster Beads & Trims .....41-46  
 Plaster Casing Beads .....41  
 Plaster Control Joints.....42-43  
 Plaster Corner Beads .....41, 44-45  
 Pre-Bent Flashing.....51  
 Press Brakes Shapes .....38  
 Product Specifications .....54

**R**

RC-1 and RC-2.....33  
 Reveal Trim.....12  
 Res Bar.....33  
 Resilient Channel .....33  
 Roll Flashing.....50  
 RollPRO™.....22  
 Roof Edge.....49

Roofing Metals..... 49-51

**S**

Self-Furring Diamond Mesh Lath .....47  
 ShadowFree® Metal Products ..... 6-9  
 Shaftwall/Stairwell .....39  
 Splayed Corner Bead  
 Metal..... 7, 9  
 Paper Faced .....25-28, 30  
 Vinyl..... 13, 15  
 Spray Adhesive.....22  
 Standards .....54  
 Step Flashing.....51  
 Stucco Casing Beads .....41  
 Stucco Control Joint..... 42-43  
 Strap .....36  
 Structural Accessories .....38  
 Structural Framing .....37  
 Structural Studs .....37  
 Structural Tracks .....37  
 Studs, Steel ..... 31, 37, 39-40  
 Style D.....49

**T**

Tabbed J-Track .....39  
 Tape-On Paper Faced Beads ..... 23-27  
 Tape-On Paper Faced Trims .....30  
 Tile Pan.....50  
 Tracks .....31, 39-40  
 Transition Caps..... 19  
 Trim Products  
 Metal..... 11-12  
 Paper Faced .....30  
 Vinyl..... 20-21

**U**

U-Channel ..... 31-32, 37-38, 40  
 U-Track .....40  
 U-Trim ..... 11  
 Uneven Leg Paper Bead .....25  
 Utility Angle..... 32, 38

**V**

Veneer ..... 44-45  
 Veneer Beads & Trims ..... 44-45  
 Veneer Casing Beads ..... 44-45  
 Veneer Corner Beads ..... 44-45  
 Vinyl..... 13-22  
 Vinyl Adaptors..... 19  
 Vinyl Beads & Trims..... 13-22  
 Vinyl Finishing Products ..... 20-22

**W**

Wall Flashing.....51  
 W-Valley.....50  
 Weep Screed.....46

**Z**

Z-Furring Channel .....35  
 Zinc Control Joints.....12,45  
 Zinc Veneer and Stucco Products.....41-46



### Corporate Office

4949 S. 30th Street  
Omaha, NE 68107  
800.822.5055 402.339.3800  
402.339.0772 Fax

### Niles Plant

504 Walnut Street  
Niles, OH 44446  
800.348.4338 330.652.4335  
402.252.7692 Fax

## Certificate of Compliance

This certifies that the following products meet the applicable specifications for drywall products as designated herein and will perform equal to or better than comparable products when used as detailed and in accordance with our recommendations.

### ASTM Designation for C1047

Standard Specification for Accessories Gypsum Wallboard and Gypsum Veneer Base

#### Drywall Metal Beads and Trims

Corner Bead  
Bullnose Corner Bead  
J-400, L-200, U-200

#### Conventional Plaster Accessories

#1 Expanded Corner Bead  
#15 Double V Expanded Joint  
#30 Double V Corner Expansion Joint  
#33 Wide Flange Expanded Bead  
#40 Expansion Joint  
#66 Expanded Flange Square Casing  
#66 Short Flange Square Casing

#### Veneer Beads and Trims

Mini Veneer Bead  
Kal-Korner®  
J-Trim Casing Bead  
L-Trim Casing Bead

#### **kwikSTIK® Paper Faced Metal Beads and Trims\***

#### **gripSTIK® Vinyl Corner Beads and Trims**

**093 Expansion Control Joint**

\*With exceptions as noted in product literature.

### ASTM Designation for C645

Standard Specification for Nonstructural Steel Framing Members

#### Channels

Cold Rolled Channel (16 Gauge)  
Standard Duty Resilient Channel (RC-1)  
Tru-25® Gauge Resilient Channel (RC-1)  
Weath-Ex® Tru-25® Gauge Resilient Channel (RC-1)  
2 Legged Expanded Resilient Channel (RC-2)  
Z-Furring Channel

#### Metal Angle

Knurled Angle Runner 90°  
Weath-Ex® Knurled Angle Runner 90°

#### Metal Flat Stock

Knurled Cabinet Backing (Flat Strap)

#### Studs and Tracks

25 and 20 Gauge Studs and Tracks  
H-Studs and U-Tracks  
I-Studs and J-Tracks

### ASTM Designation for C955

Standard Specification for Load Bearing Steel Studs, Runners and Bracing or Bridging for Screw Application of Gypsum Panel Products and Metal Plaster Bases

#### Structural Framing Products

Structural Studs & Tracks

### ASTM Designation for A653

Standard Specification for Steel Sheet, Zinc-Coated (Galvanized) or Zinc-Iron Alloy Coated (Galvannealed) by the Hot-Dip Process

#### Coatings

Galvannealed  
Hot-Dip Galvanized



## LEED® Certification



Phillips Manufacturing Co. understands the importance of recycling and manufactures all of its products utilizing materials with recycled content. Phillips Manufacturing's products contain a minimum of 30% total recycled content (25% post-consumer and 5% pre-consumer). Using Phillips products can contribute to several LEED® points under the Materials and Resources category.

- MR Credits 2.1 & 2.2 Construction Waste Management. Recycling construction waste contributes to LEED® credits MR 2.1 & 2.2 and cold formed steel is 100% recyclable.
- MR Credits 4.1 & 4.2 Recycled Content
- MR Credits 5.1 and 5.2 Regional Materials

To request a project specific LEED® letter, please visit our website at PHILLIPSmfg.com

## Additional Information Available at:

[www.PHILLIPSmfg.com](http://www.PHILLIPSmfg.com)

DOWNLOAD IT!

Phillips is dedicated to providing you the most up to date information on our website including:

- Downloadable Product Catalog
- Packaging Sheets
- Submittals
- Assembly Drawings
- Material Certifications
- Spanish-English Product Guide
- 3-Part Specifications
- Installation Recommendations
- LEED® Form
- MSDS Sheets
- Fire Ratings
- Press Releases
- Sound Transmission Control
- And Much More!



[PHILLIPSmfg.com](http://PHILLIPSmfg.com)  
**800.822.5055**

