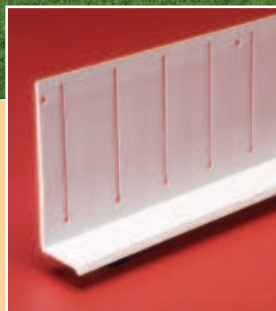


Installations made easy!

with
**Accessories for
Gutters & Siding**



Vents



Drip Edges



Siding Mounting Kits



Recessed Electrical Boxes

from the **Originator** of pvc accessories

PLASTIC PC
COMPONENTS inc.

An Industry-Leader...

Since 1969, Plastic Components has been the leading manufacturer of plastic trims; corner beads, control joints, vents, slip joints, reveals *and more* for exterior insulated finish systems (EIFS), direct applied (DEFS), stucco, drywall and other applications. We are also the original designers of many PVC trims and offer the most complete line of PVC accessories for EIFS in the industry.

We continually develop products that make the job go faster and easier. Our line includes nearly 700 different items for almost any jobsite condition – from freezing cold to extreme heat. All deliver good looks, ease of handling, moisture management, reduced labor costs, superior field performance and proven compliance with ASTM standards.

Our PVC accessories for gutter and siding were developed to provide building professionals with a rust-free, damage-resistant, economical alternative to galvanized and aluminum products and accessories. Manufactured with impact-resistant, lead-free PVC, they conform to ASTM standards D1784 and C1063.

Our trims are listed with Intertek Testing Services /Warnock Hersey, the internationally known third-party certification agency, to meet or exceed the strict standards set by ASTM for strength, dimensional stability and weather resistance. In fact we are the only PVC trim manufacturer to submit its products to an independent third party testing organization for evaluation and certification.

Call us at 800-327-7077 or visit our Web site: www.plasticcomponents.com to learn more.



New from Plastic Components, a vent designed just for ventilating the foundations and crawl spaces of vinyl, rigid or wood siding.

Made of high-impact, UV-resistant pvc material, this new vent delivers expanded, unrestricted air flow and superior field performance.

Product Number	Description	Color
PC401	Foundation Vent for siding 16-1/2" w x 9-1/4" h 32 sq. inch air flow per linear ft	White



Paintable White Foundation Vent



GutterGuard Pro protects gutters!

Prevents debris and leaf build-up in gutters.

Durable, affordable one-piece construction.

Class A Fire Rating.

UV tested for long outdoor life.

GutterGuard Pro is listed by Warnock-Hersey and ASTM to meet or exceed their standards for tensile and flexural strength, dimensional stability and weather-resistance.

Prevents streaks on gutter face.

Unique drip edge prevents "tiger striping" on the face of the gutter.

Fits most 5" and 6" gutter systems.

Rests on the mounting hangers of any 5- or 6-inch continuous gutter system at a consistent angle independent of roof pitch and gutter slope.

Installs with all kinds of roofing materials.

No fasteners or tools needed.

Easy snap-on installation.

Snaps off for easy maintenance.

for Gutter Protection

NEW!

GutterGuard™ Pro

Easy snap-on installation

– NO FASTENERS!

Slips easily under the shingles and snaps on, reducing installation time.

One-piece, UV resistant.

Fits 5 or 6 inch gutters.

Precut ends allow for easy overlapping of 10' sections.

Durable. **Class A Fire Rating.**

Product Number	Description Gutter Guard™ Pro	Color	Pieces in Box
GGP5000	5" (127 mm) width 10' (3 m) lengths	White	13
GGP5000T		Tan	13
GGP5000DB		Dark Brown	13
GGP6000	6" (127 mm) width 10' (3 m) lengths	White	13
GGP6000T		Tan	13
GGP6000DB		Dark Brown	13

Warnock Hersey

 LISTED PRODUCT



GUTTER CLUTTER™ Gone!

Easy,
Snap-in Installation
NO TOOLS!

3 colors



PLASTIC PC
COMPONENTS inc.

GutterGuardPRO™
GUTTER PROTECTION SYSTEM

WWW.GUTTERGUARDPRO.COM

PRODUCT INFORMATION



Now offered by Plastic Components, Arlington's siding mounting boxes and kits install receptacles or light fixtures firmly and securely on any kind of siding – before or after the siding goes up!

For outdoor receptacles, boxes, meters, light fixtures, even extra large coach lamps.

Styles include:



Flanged and 'unflanged', standard electrical boxes or deeper ones for GFCIs.

Regular and extra large mounting plates.

Individual boxes and covers, including products for flat surfaces.

- Fast and easy installation
- UV-rated for long outdoor life
- Textured, paintable

Siding Mounting Boxes, Kits, Blocks for All Siding Types and Flat Surfaces

	Flat	1/4", 5/16"	1/2"	5/8"	Dutch Lap
New and Retro Siding Box Kits	PC8081 Flangeless, w/ vertical box opening <i>For standard light fixtures/devices</i>	•	•	•	•
	PC8081F With flanges, vertical box opening <i>For standard light fixtures/devices</i>	•	•	•	•
	PC8081DBL Double height, flangeless, w/ vertical box opening <i>For large light fixtures</i>	•	•	•	•
	PC8081FDBL Double height, with flanges, vertical box opening <i>For large light fixtures</i>	•	•	•	•
	PC8082F With flanges, vertical box opening <i>For fixtures/devices</i>	•	•		
	PC8091F With flanges, deep vertical box opening <i>For GFCIs, large devices, fixtures w/ ballast</i>	•	•	•	•
	PC8091FDBL Siding box kit w/ MEGA mounting plate <i>For extra large fixtures, coach lamps</i>	•	•	•	•
Retro Siding Box Kits	PC8131 Kit with built-in electrical box <i>For mounting standard fixtures on 1/4", 5/16" siding</i>	•			
	PC8141 Kit with built-in electrical box <i>For mounting standard fixtures on 1/2" siding</i>		•		
	PC8141DBL Kit with built-in electrical box <i>For mounting standard fixtures on 1/2" double siding</i>		•		
	PC8151 Kit with built-in electrical box <i>For mounting standard fixtures on 5/8" siding</i>			•	
	PC8161 Kit with built-in electrical box <i>For mounting standard fixtures on flat siding</i>	•			
	PC8171 Kit with built-in electrical box <i>For mounting standard fixtures on dutch lap siding</i>				•
	  Canadian shipments include grounding lug required by CSA with grounding lug				

SIDING PRODUCT SELECTOR

The SIDING SOLUTION™



Arlington siding box kits deliver a UL Listed and approved installation – because the box section is an actual electrical junction box!

Kits include an electrical box, cover and NM cable connector. They install on all siding types, before or after the siding.

For installations **before** the siding goes up, use the 'flanged' PC8081F, PC8081FDBL, PC8082F, or PC8091F.

After the siding is up or for retrofit, break the flanges off a flanged style along the prescored lines or use our 'flangeless' styles PC8081 or PC8081DBL. For fixtures and receptacles that require GFCIs, use the deeper PC8091F.

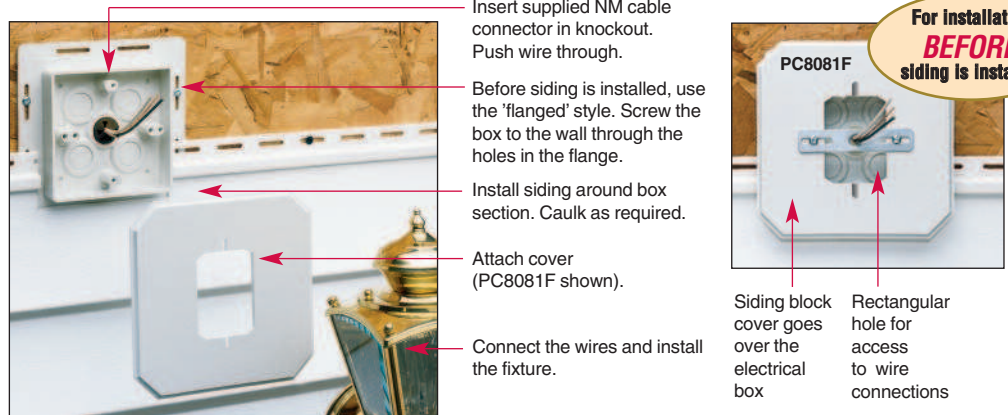
Easy to install

Premolded screw locations for devices and lighting fixtures.

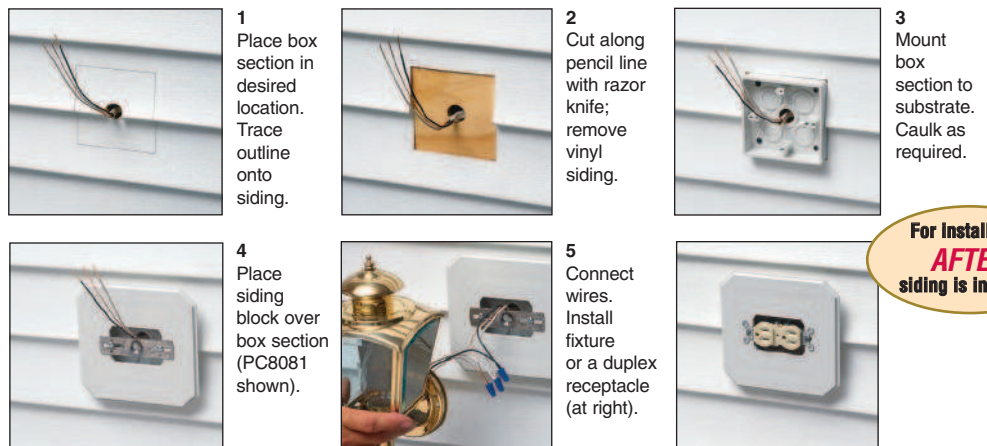
Easy access to wire connections in the box through rectangular hole.

The box enclosure installs in two ways. The first method uses the location holes for a typical 3-1/2" or 4" diameter box. The second uses the screw locations for device mounting when rotated 90°.

Installation with Flanged Box (PC8081F, PC8081FDBL, PC8082F, PC8091F)



Installation of Box without Flange PC8081, PC8081DBL



Catalog Number	UPC/DC/NAED MFG #01 8997	Siding Type	Unit Pkg	Standard Pkg	Dim	Box Depth Cubic Inch	Style
PC8081	80812	All Types	25	25	6.5" x 6.5"	1.125" • 15.5 cu in	Flangeless
PC8081DBL	80813	All Types	25	25	10.5" x 6.5"	1.125" • 15.5 cu in	Flangeless
PC8081F	80814	All Types	25	25	6.5" x 6.5"	1.125" • 15.5 cu in	with Flange
PC8081FDBL	80815	All Types	25	25	10.5" x 6.5"	1.125" • 15.5 cu in	with Flange
PC8082F	32240	1/2" or Less	25	25	6.5" x 6.5"	1.125" • 15.5 cu in	with Flange
PC8091F	17856	All Types	25	25	6.5" x 6.5"	1.625" • 24.5 cu in	with Flange
PC8081FB	10941	All Types	25	25	–	–	Box Only
PC8081FC	10939	All Types	25	25	–	–	Cover Only
PC8091FB	10945	All Types	10	10	–	–	Box Only
PC8091FC	10946	All Types	10	10	–	–	Cover Only
PC8081FDBLC	10943	All Types	10	10	–	–	Cover Only
PC8091FDBLC	10947	All Types	10	10	–	–	Cover Only



For Standard Light Fixtures and Devices

PC8081 (flangeless) PC8081F (w/ flanges)



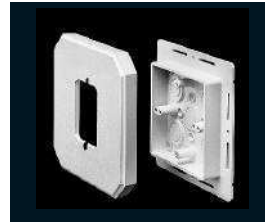
For Large Light Fixtures

PC8081DBL PC8081FDBL (w/ flanges)



For Fixtures, Devices on T-111

PC8082F (w/ flanges)



For GFCIs, Large Devices, Fixtures, Fixtures w/ Ballast

PC8091F (w/ flanges)



Arlington offers a complete Siding Mounting Kit for smooth, vertical mounting of lighting fixtures on all siding types – and flat surfaces!

Made of UV-rated plastic for long, outdoor life, the textured surface is paintable to match the mounting surface.

The built-in electrical box design ensures a UL Listed installation every time.

Determine your siding type, to select the proper Kit...1/4" & 5/16", 1/2", 5/8", or dutch lap siding!

Installation on Siding PC8141



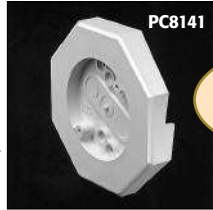
1 Select location for light fixture. Caulk opening around cable.



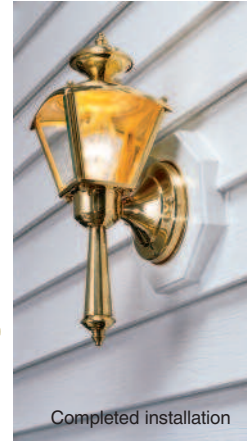
2 Remove knockout from box. Install cable connector. Push cable through connector. Position mounting block on siding.



3 Secure mounting block with screws provided. Install fixture.

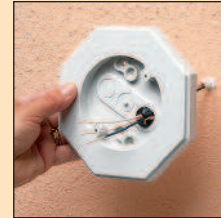


For Installation **AFTER** siding is installed



Each kit includes: Mounting block with built-in electrical box, NM cable connector and four screws.

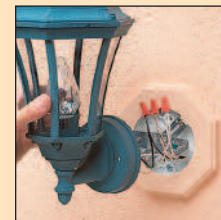
Easy Installation on Flat Surfaces with PC8161



1 Select fixture location. Caulk opening around cable. Remove knockout from box. Install cable connector. Push cable through connector. Position block on surface.



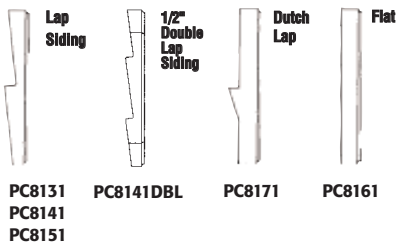
2 Secure mounting block with screws provided. Paint block as desired to match wall surface.



3 Install fixture.

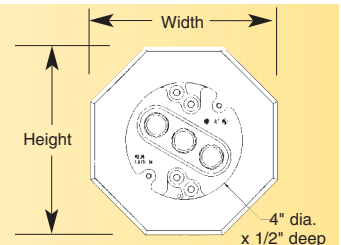


Fixture Installations made easy!



Catalog Number	UPC/DC/NAED MFG #01 8997	Siding Type	Standard Pkg	Overall Width	Overall Height
PC8131	08131	1/4", 5/16" Lap	10	6.625"	6.625"
PC8141	10751	1/2" Lap	10	6.625"	6.625"
PC8141DBL	54524	1/2" Double Lap	10	6.625"	10.200"
PC8151	10753	5/8" Lap	10	6.625"	6.625"
PC8161	08161	Flat Surfaces	10	6.625"	6.625"
PC8171	10757	Dutch Lap	10	6.625"	6.625"

Electrical box dimension: 4" diameter x 1/2" deep



Rust-free, Labor-saving Soffit Vents

Vent Screen TRAC

For superior water management in EIFS systems. Available with or without weep holes.

Product Number	Description	Foam Thickness	Pieces in Box
VST-50	TRAC for EIFS systems with	1/2" (13 mm)	35
VST-58	double row of	5/8" (16 mm)	35
VST-75	drainage holes	3/4" (19 mm)	30
VST-1	at rear.	1" (25 mm)	25
VST-125		1-1/4" (31 mm)	20
VST-15		1-1/2" (38 mm)	20
VST-175	2" (51 mm) wide	1-3/4" (44 mm)	15
VST-2	nailing flange w/	2" (51 mm)	15
VST-225	nail attachment	2-1/4" (57 mm)	15
VST-25	holes set at	2-1/2" (64 mm)	15
VST-275	4" (102 mm) o.c.	2-3/4" (69 mm)	10
VST-3		3" (76 mm)	10

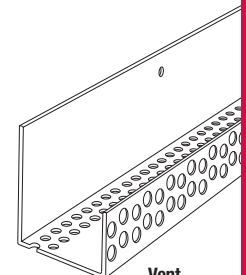
Add prefix "N" to order without weep holes: NVST-50
 10' (3 m) lengths

Continuous Soffit Vents

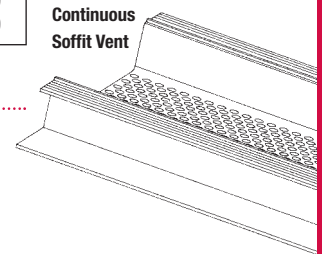
2", 3", 4" and 6" wide vents. For use with any sheathing product.

Product Number	Vent Area (width)	Air Flow /linear ft	Sheathing Thickness	Pieces in Box
548-38	2-5/8" wide	14 sq. in. (9,033 sq. mm)	3/8" (10 mm)	13
548-50	(67 mm)		1/2" (13 mm)	13
548-58			5/8" (16 mm)	13
548-75			3/4" (19 mm)	13
3548-50	3" wide (76 mm)	15 sq. in. (9,678 sq. mm)	1/2" (13 mm)	13
3548-58			5/8" (16 mm)	13
4548-50	4" wide (102 mm)	16 sq. in. (10,323 sq. mm)	1/2" (13 mm)	13
4548-58			5/8" (16 mm)	13
6548-50	6" wide (152 mm)	18 sq. in. (11,614 sq. mm)	1/2" (13 mm)	10
6548-58			5/8" (16 mm)	10

10' (3 m) lengths • Connector clips included



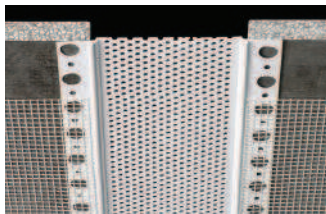
Vent Screen TRAC



Continuous Soffit Vent

Surface Mounted Soffit Vents

3", 4" and 6" wide vents with 1/8" (3 mm) ground. For all applications except stucco.



Product Number	Vent Area (width)	Air Flow /linear ft	Pieces in Box	Uses
SMV3	3" wide (76 mm)	15 sq. in. (9,678 sq. mm)	35	Adhesive mount
SMV4	4" wide (102 mm)	16 sq. in. (10,323 sq. mm)	35	For all applications except stucco.
SMV6	6" wide (152 mm)	20 sq. in. (12,904 sq. mm)	30	

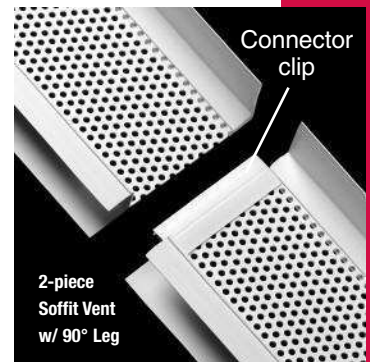
10' (3 m) lengths • Connector clips included

2-piece Soffit Vent w/ 90° Leg

2", 3", 4" and 6" wide vents. For use with any sheathing product. Check with customer service for custom sizes.

Product Number	Vent Area	Air Flow /linear ft	Sheathing Thickness	Pcs /Box
F548-38WF551	2-5/8" wide	14 sq. in. (9,033 sq. mm)	3/8" (10 mm)	13
F548-50WF551	(67 mm)		1/2" (13 mm)	13
F548-58WF551			5/8" (16 mm)	13
F548-75WF551			3/4" (19 mm)	13
F3548-50WF551	3" wide (76 mm)	15 sq. in. (9,678 sq. mm)	1/2" (13 mm)	13
F3548-58WF551			5/8" (16 mm)	13
F4548-50WF551	4" wide (102 mm)	16 sq. in. (10,323 sq. mm)	1/2" (13 mm)	13
F4548-58WF551			5/8" (16 mm)	13
F6548-50WF551	6" wide (152 mm)	18 sq. in. (11,614 sq. mm)	1/2" (13 mm)	10
F6548-58WF551			5/8" (16 mm)	10

10' (3 m) lengths • Connector clips included



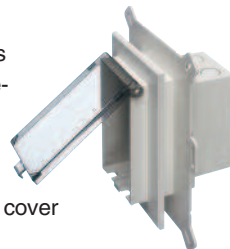
2-piece Soffit Vent w/ 90° Leg



with grounding lug

Recessed Electrical Box for New Siding

Arlington Industries' IN BOX™ for new siding is available from Plastic Components! These one-piece, recessed electrical boxes save on labor and install *in the wall* for a great-looking job. The cover protrudes from the surface just enough for a neat, clean appearance. Flanges cover the cut ends of siding.



- UL/CSA Listed weatherproof-in-use
- No gaskets required
- For all siding types
- Clear or paintable white cover
- Meets 2008 National Electric Code

Product Number	Description IN BOX™	Cover Color
PCDBVS1C	For new siding. One-piece recessed electrical box	Clear
PCDBVS1W	Vertical orientation with weatherproof-in-use cover	Paintable White



Drip Edges and Screeds

Window/Door Arch Drip Edge

Designed for use over arched window/door openings, this drip edge has a 3-1/2" (89 mm) wide flange. The positive angle at front helps move incidental moisture away from the structure. The pre-slotted nailing flange saves on labor.

Product Number	Description Arch Drip Edge	Foam Thickness	Pieces in Box
WDA-75	Head flashing	3/4" (19 mm)	30
WDA-1	for windows	1" (25 mm)	30
WDA-1125	and doors.	1-1/4" (31 mm)	30
WDA-15	Pre-slotted	1-1/2" (38 mm)	30
WDA-175	3-1/2" (89 mm)	1-3/4" (44 mm)	30
WDA-2	wide flange.	2" (51 mm)	30

10' (3 m) lengths

Window/Door Drip Edge

The sloped front edge on this product allows moisture to shed down the surface, preventing it from entering the framing.

Product Number	Description	Foam Thickness	Pieces in Box
SB-75	Drip edge for	3/4" (19 mm)	100
SB-1	windows and doors.	1" (25 mm)	75
SB-15	For	1-1/2" (38 mm)	60
SB-2	3/16" (5 mm)	2" (51 mm)	50
SB-3	finishes.	3" (76 mm)	30
SB-4		4" (102 mm)	25
SB-1-25X	For 1/4" (6 mm) finishes		70

10' (3 m) lengths

Drip Screenshot

Prevents water from slipping back and into the soffit. Also serves as an expansion joint.

Product Number	Description	Ground Dimension	Pieces in Box
540-25	Soffit drip screed	1/4" (6 mm)	15
540-38	with 2" x 2"	3/8" (10 mm)	15
540-50	(51 mm x 51 mm)	1/2" (13 mm)	15
540-58	perforated	5/8" (16 mm)	15
540-75	flange.	3/4" (19 mm)	15
540-78		7/8" (22 mm)	15

10' (3 m) lengths



Ultra-Lath® Rust-free Plastic Lath

Plastic Lath

For exterior or interior vertical applications, the self-furring ridges in Ultra-Lath provide exceptional keying for finishes.

Ultra-Lath® is light-weight and impervious to sand and the chemicals in portland-based stucco.

IT WILL NOT RUST

OR CORRODE. It may be installed over any code approved substrate (not recommended for open frame).

Product Number	Description Ultra-Lath® plastic lath	Packaging	Qty per Pallet
PDM2796	Sheets 27" x 96" (686 mm x 2.4 m)	10 sheets (180 sq. ft.) per bundle	25 bundles (4,500 sq. ft.) per pallet
PDMR	Rolls 27" x 100' roll (686 mm x 30.5 m)	225 sq. ft. per roll	18 rolls per pallet
PDM3	Strip-Lath® Strips 3" (76 mm) width		Qty per Box 50
PDM4	4" (102 mm) width	96" roll	50
PDM6	6" (152 mm) width	(2,438 mm)	50
PDM8	8" (203 mm) width		50



Distributed by



Note Caulk all butt joints, ends, angles, corners and intersections at time of installation.