



Mouldings & Trim Boards Installation Sheet

Getting Started

Each step of this installation guide has been designed to make installation quick and easy. You may encounter alternative techniques you are not familiar with, so we recommend that you consult a Royal Building Products representative first to ensure a successful installation.

Important: Please read through all the instructions before you begin.

Tools

- **Safety glasses and power miter saw:** Carbide saw blade with 80 teeth or more recommended.
- **Glue:** To adhere the miter joints, Royal strongly recommends gluing all joints with PVC or "Pipe Cement."
- **Hammer & nails** or a pneumatic nail gun. Other tools may include a tape measure, pencil, C-clamp, putty and caulk.

Cutting

Use standard woodworking equipment for cutting. If using a power miter saw, a carbide toothed blade is recommended. Use Dry Cote® available from Home Depot® on saw blade as a lubricant for easier cutting.

Nailing

Install No Rot® mouldings using 6d and 8d galvanized nails and/or recommended adhesives (see chart on this page). Place nails 12" to 16" on center. Nails should be approximately 3/4" from each edge. If nailing product at 40°F or below, pre-drilling is required. Pneumatic nailing is also recommended.

Gluing Miter Joints

Royal strongly recommends gluing all miter joints on PVC or styrene mouldings using a quality Instant adhesive on Polystyrene and Clear PVC Cement on PVC. It may seem unconventional, but the benefits outweigh the inconvenience. When assembling splice and return miters, try gluing the mouldings together before installation. This will allow you to fit the joints uninhibited and fasten the trim to the wall as one unit. Fitting these joints on the wall can be difficult and possibly jeopardize the integrity of the miter joint.

Fastening Moulding to the Wall

Polystyrene and PVC trim can be nailed with finishing nails and/or glued. Our recommendations for the nails are paneling, finishing or pneumatic finish nails. For the glue, recommended products are PL Glues/PC —200, 300, 400/LIQUID NAILS applied according to manufacturer's directions. Glue alone is not advised for crown mouldings.

Adhesive Selection for Cellular Vinyl

The following brands have been laboratory tested and approved for use with Royal Cellular Vinyl; however, individual conditions may vary and these adhesives may not perform under every circumstance. Other brands may also be suitable, but always test before using.

G: Good Bond **F:** Fair Bond **P:** Poor Bond

Int/Ext Adhesive	Wood	Steel	Sheetrock	Masonry
Dow 100% Silicone®	F	F	G	–
Dap 230 Latex®	F	P	G	–
Tru Test® (Tru Value®)	G	P	G	–
Contech PL-400®	F	F	G	–
Better Than Nails®	G	F	G	G
Liquid Nails LN-90 Heavy Duty®	G	–	G	G
For Interior Use Only				
G.E. Silicone®	F	G	G	–
USG Cove Base Adh.®	G	G	G	–
OSI Quick Bond®	G	P	G	G

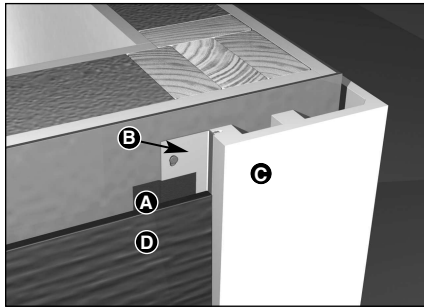
Note: Royal exterior PVC products, as manufactured, will expand and contract due to temperature variations. To reduce or eliminate open joints, the preferred method is the use of adhesive commonly called "pipe glue" or "PVC pipe cement." When bonded correctly with this adhesive, the joint becomes an integral part of the system to which it is being applied.

Brick Mould & Jamb

1. Remove old jamb, brick mould and garage door stop with a pry bar or hammer.
2. Measure the top opening from side to side and cut jamb to fit with a fine tooth power- or hand saw.
3. Cut top and side jambs to appropriate length and assemble with threshold as a single unit, then insert unit into door opening. Level and fasten using 8d galvanized finishing nails to 2x4 or 2x6 structural frame members. Alternate nailing from side to side, nailing every 12" and approximately 3/4" from each edge. Note: If nailing product at 40°F or below, predrilling is required.
4. Can be removed.
5. Measure top brick mould to overlap the jamb material by 1/2". This will allow for a 1/8"–1/4" reveal around the jamb. Reveal should be both on top and sides. Cut 45° angle on ends, butt or angle joint middle seam if needed.
Note: Reveal may vary depending on siding, siding J-channel, brick or block installation.
6. Install brick mould using 10d or 3" galvanized finishing nails, spaced 12" on center. Use PVC cement in the mitered joint for optimum fit. **Note:** Nails should penetrate structural frame at least one inch.
7. Measure and cut side brick mould trim to fit. Install as directed.

Siding Corners

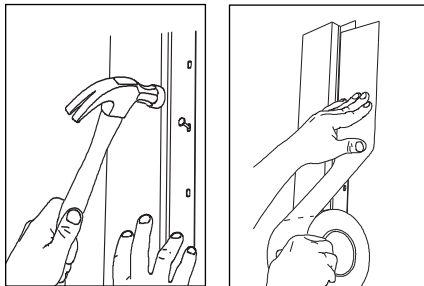
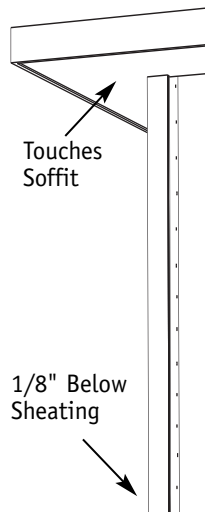
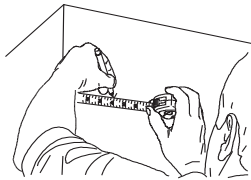
1. Insert nailing fins into corner trim as shown.
2. Cut the trim pieces so that they touch the soffit on top and extend 1/8" below the sheathing on bottom.



5-1/2" Siding Outside Corner

- A. Moisture Barrier Tape
- B. Nail Fin
- C. Siding Corner
- D. Siding

3. Measure from the corner: 4" for 3-1/2" trim and 6" for 5-1/2" trim and make several V-marks from top to bottom. Use these marks to line up the edge of the nailing fin or to strike a chalk line for alignment.
4. While lining up the edge of the nailing fin with the V-marks (or chalk line), apply nails through the pre-punched holes, 18" (MAX) apart.



5. Apply 4" window and door sealing tape so that it fully covers both nailing fins, from the soffit to the bottom of the sheathing.

Ceiling Planking

1. Allow 1/4" on each end for expansion.
2. With the nailing fin positioned away from the wall, face nail the first piece against one side of the ceiling. Nail the nailing fin on the first piece on maximum 16" centers.
3. Insert the next piece into the slot and continue nailing through the fin on maximum 16" centers until ceiling is completely covered.
4. Use PVC cement where plank ends must be butted together.
5. The last piece will probably need its width adjusted. Measure, mark and rip it to the desired width.
6. Face nail the last piece as close to the wall as possible.
7. Cover edges with crown or trim moulding.

CAUTION: Ceiling planking should never be used for load-bearing application. Attic space above porch should be vented.

Painting

Painting Cellular Vinyl PVC

Royal's factory applied Readi-Finish® requires no painting but can be painted, if desired, with oil based or latex paints. Readi-Finish® carries a 10-year warranty. Painting Cellular Vinyl with dark colors (dark green, black, crimson red) is not recommended. For information on painting dark colors, call 800-368-3117.

Touch-Up for Exterior Mouldings

A complete line of touch-up products is available from Royal for pre-finished woodgrain colors, painted colors and Clearwood® ready to stain finishes. Also recommended:

- Dap® "All Purpose" Painter's Putty®
- Minwax High Performance Wood Filler®
- Elmer's Fill-N-Finish Light Wood Filler®
- Sherwin Williams Shrink Free Spackling®

After installation is complete, caulk and/or putty all gaps and nail holes.

Cleaning

Exterior Mouldings

Cleaning Royal's mouldings is easy and fast with most major household cleaners. There are many cleaners on the market and the glass cleaners seem to be the best candidate for keeping the finish intact. The cleaning solution should be applied and immediately wiped dry. With any cleaning material, the cleaning solution should not be left to stand on the components for an extended period of time. Royal recommends the following cleaners:

- Windex®
- Spic & Span Cinch®
- Fantastik Orange Action®
- Clorox Clean-Up®
- Fantastik Oxy Power Multi-Purpose Cleaner®
- 409 Glass and Surface Cleaner®
- Fantastik All-Purpose®
- Regency® (Glass and Surface)
- Glass Plus®

What to Avoid

Harsh cleaners with glycol ethers or ethanol type solvents and/or isopropyl alcohol soften the coating if left on for several minutes and are not recommended. Examples of these harmful cleaners are Goof Off®, Wal-Mart "Great Value All Purpose Cleaner®" (glycol ether), 409 General Purpose® (2-Butoxyethanol) and Greased Lightning® (glycol ether), citrus cleaners, abrasive cleaners, and solvents such as acetone, paint remover and lacquer.



Royal Building Products

Great Ideas Taking Shape.