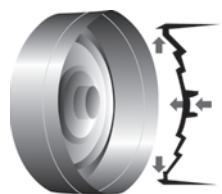


ASTM C-794 Adhesion-in-Peel Data			
Substrate	Pass or Fail	Substrate	Pass or Fail
Aluminum	Pass	Pine	Pass
Brick	Pass	PVC	Pass
Concrete	Pass	Stone	Pass
EIFS	Pass	Stucco	Pass

Warranty

Sashco warrants this product will substantially meet published specifications on the date of sale. If it fails to do so, return unused portion with original sales receipt for replacement or refund, at Sashco's sole option. These are purchaser's sole and exclusive remedies for any breach of warranty. Purchaser must determine suitability of product for purchaser's specific needs and assumes all risk associated with its use.

Except as stated above there are no warranties for this product. **The foregoing express warranty is in lieu of all other warranties, express or implied, including without limitation implied warranties of merchantability or fitness for a particular purpose, which warranties are specifically excluded and disclaimed.** This Limited Warranty gives you specific legal rights. You may have other rights which vary from state to state. Some states do not allow exclusion of implied warranties in consumer or other sales, limitations on the duration of implied warranties, or exclusion or limitation of incidental or consequential damages. Thus, the limitations or exclusions contained above may not apply to you depending upon your specific circumstances.



Alyster Plunger

10.5 cartridges come with Sashco's unique Alyster plunger.

A flexible telescopic diaphragm not only stops material flow, it actually pulls material back into the nozzle!

- **Tight Seal** – Increases shelf life and minimizes leakage.
- **Stop Flow** – The flexible telescopic diaphragm assures that material flow will stop when caulk gun pressure is released.

Typical Properties

PROPERTY	VALUE	
Color:	White-White, Gray, Light Gray, Pewter, Khaki, Beige, Pecan	
Packaging:	10.5 oz. plastic cartridges, 29 oz. fiber cartridges, white-white available by special order only. (Not all colors available in all sizes).	
Joint Size:	Up to 3" (76 mm) wide	
Application Range:	40°F to 90°F (4°C to 32°C)	
Service Range:	-30°F to 250°F (-34°C to 121°C)	
Tensile Properties:	Recovery at 50% stretch: 100% recovery in 3 min Recovery at 100% stretch: 96% recovery in 5 min	
VOC:	44 g/L, <1.5% by weight	
Paintability:	With exterior latex paints after 4 hours (will take longer in cool, humid conditions). Allow 1 week drying time before applying oil-based paints, sealers, or stains. Some interior and exterior low-end, flat latex paints may crack over Mor-Flexx, so test in an inconspicuous area first.	
PROPERTY	RESULTS	TEST METHOD
Durability:	12.5% joint movement (10 cycles @ -15°F (-26°C)	ASTM D-719)
Hardness, Shore A:	29	ASTM C-661
Slump:	1/16"	ASTM D-2202
Solids:	76% by weight	ASTM C-1250
Extrusion Rate	750 g/min (1/8" orifice at 40 psi)	ASTM C-603
Freeze-Thaw Stability:	Passes at least 5 cycles 0°F to 70°F (-18°C to 21°C)	ASTM C-731
Low Temp. Flexibility:	Pass (not artificially weathered)	ASTM C-734
Tack-Free:	Less than 30 minutes	ASTM C-679
Cured:	4-5 days (dependent on temperature, humidity, and bead size)	
Adhesion-in-peel		
Passing Substrates:		ASTM C-794
Specifications*:	ASTM C-843-00 ASTM G-53 QUV Accelerated Weathering: 4,000 hours ASTM D-638 Max 250% ASTM C-920 (Class 12.5)	

**The data reported here are believed to be reliable. No warranty is made concerning the accuracy or the results obtained from their use.*

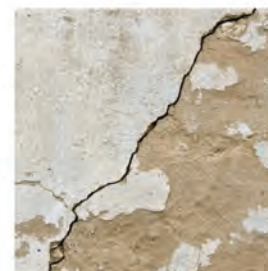
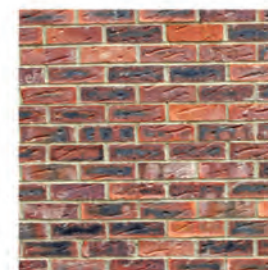


10300 E. 107th Place, Brighton, CO 80601
1-800-289-7290 • www.sashco.com

FLX 002 07-11

MOR-FLEXX[®]

Sealant for Textured Surfaces



Texture has finally met its match

Sealant for Textured Surfaces



Mor-Flexx® is the sealant for textured surfaces. Its sandy composition mimics the character of many different textured surfaces, including wood, stone, stucco, brick, mortar and man-made composite panels and siding. Mor-Flexx won't dry hard and crack like most textured repair products. Instead, it stretches and flexes with temperature changes and movement.

Why Use Mor-Flexx?

- Its elastomeric with powerful adhesion that won't crack, tear or pull away
- It can be used in joints up to 3" wide with no slump
- Its texture blends in with stucco, mortar or grout
- Water-based, so it's easy to tool and clean-up
- 7 available colors
- Paintable
- Freeze-thaw stable
- Low VOC

Where to Use

Use Mor-Flexx where a textured look is desired:

- Architectural foam
- Stucco edging
- EIFS (Exterior Insulation Finishing Systems)
- Composite board paneling or siding
- Natural wood siding



Adheres to Most building materials including:

(all conform to ASTM C-794)

Metals:

- Aluminum
- Steel
- Anodized Windows
- Brass

Plastics:

- PVC
- Vinyl

Other Surfaces:

- Tile
- Cinder Block
- Wood
- Mortar
- Stucco
- Concrete
- Brick
- Stone
- Fiber Cement
- Drywall

Where Not to Use

- On concrete less than 6 months old; the concrete is not fully cured
- Areas of water submersion or frequent, prolonged puddling
- Areas with high foot traffic and/or vehicle traffic (driveways, sidewalks, decks, patios, etc.)
- Areas where hydrostatic resistance is wanted
- Will not adhere to or is compatible with Kynar®, polypropylene, waxes, polyethylene, Teflon®, and Silicone

*Teflon® and Kynar® are registered trademarks of their respective owners.

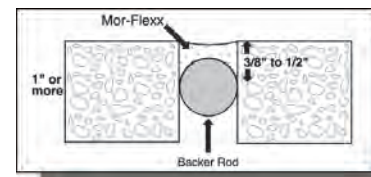
Before you start: good tips to know

- Check the weather. Pick a time when you'll have good surface and air temperatures: 40°F (4°C) and rising to 90°F (32°C) and falling.
- Lower temperatures and higher humidity will slow cure time. Mor-Flexx can be applied to damp areas, but should not be exposed to direct rainfall until cured. Use plastic sheeting with good airflow underneath to protect the product if rain is expected sooner.
- Water or an alcohol/water mix in a spray bottle may be used to slow skinning when the temperature is above 70°F (21°C) or in hot, direct sunlight.
- Mor-Flexx accepts latex paints within 4 hours. Wait at least 24 hours with low-end, flat latex paints, and 1 week before applying oil-based paints.
- Natural shrinkage will give the joint a concave appearance. Multiple applications may be needed to fill the joint flat.

Applications Steps

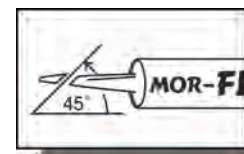
Substrate/Surface Prep

- If dirt or oils are present, wash with any household cleaner, rinse to remove and allow to dry.
- If you are repairing a failed caulking application, wire brush the crack or chipped area (or use a drill with a wire wheel) to loosen and remove any poorly bonded material, to provide good surfaces for adhesion. Use a vacuum cleaner (intake or exhaust), compressed air, or a wet rag or sponge to completely remove all loose material and dust.



lasting seal that actually uses less Mor-Flexx (refer to diagram for details).

Applying Mor-Flexx



- Choose Bead Size – Cut the spout at a 45° angle to your desired bead size and puncture the inner seal (if necessary).

- Gun Mor-Flexx into the joint and release the trigger at the end of each bead.



- For a smoother bead, use a damp foam or paint brush with a light, skimming touch.



Clean Up & Storage

- Clean up tools and hands with warm water and soap.
- Leftover Mor-Flexx can be stored if the nozzle is tightly wrapped with plastic wrap and a rubber band.

For additional information visit www.sashco.com