

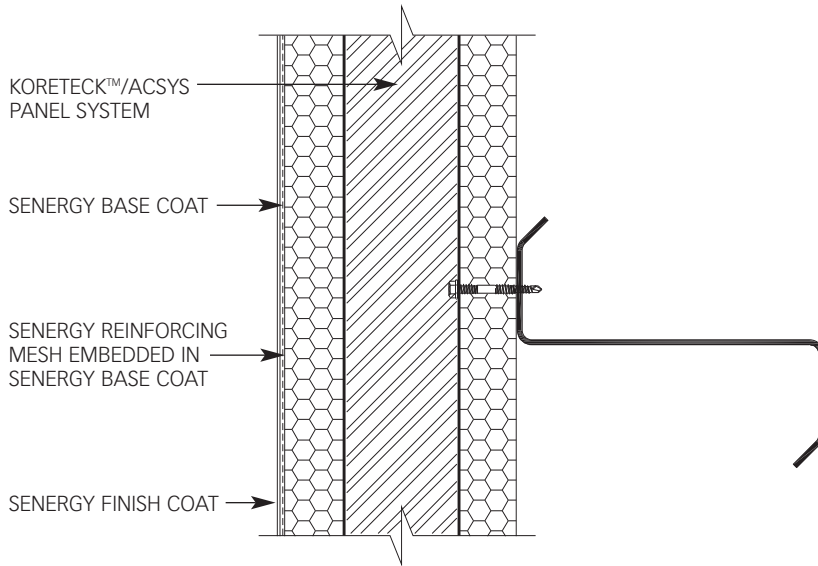
Senergy[®]

Senergy Surfacing Systems for the Koreteck™/ACSYS Panelized Wall System

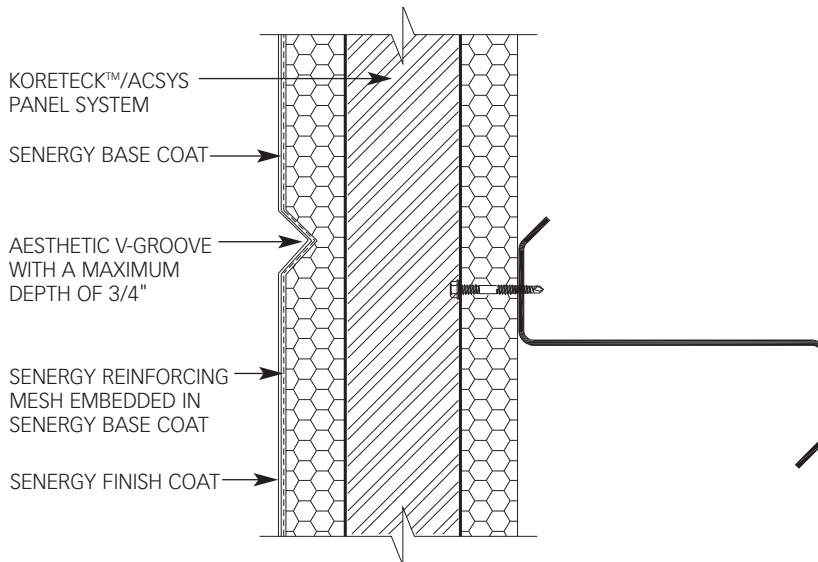
TYPICAL DETAILS
1026927



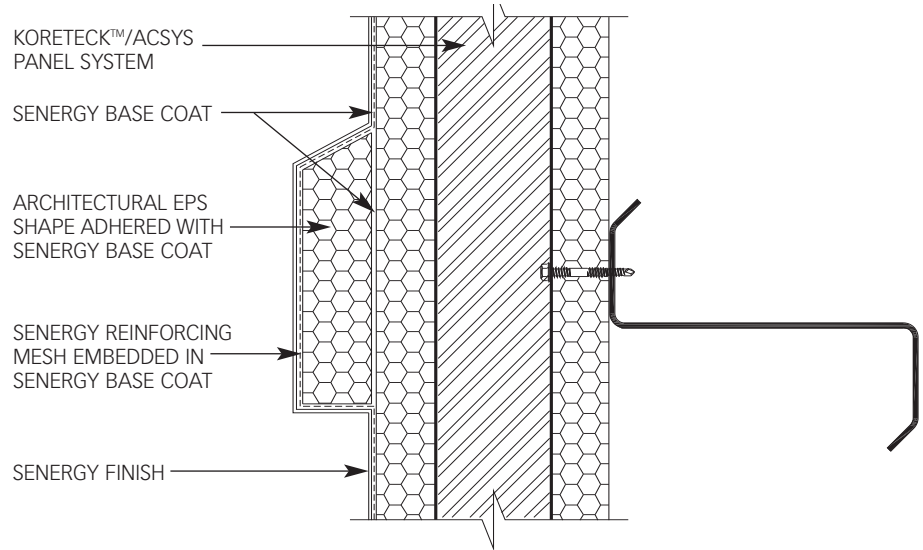
1. Senergy Surfacing System Application
2. Aesthetic Reveal
3. Architectural Shape Application
4. Stacked Panel Connection
5. Window Head/Jamb
6. Window Sill
7. Parapet Cap
8. Termination at Foundation
9. Termination at Brick Veneer
10. Pipe Penetration
11. Corner Application
12. Eave
13. Gable



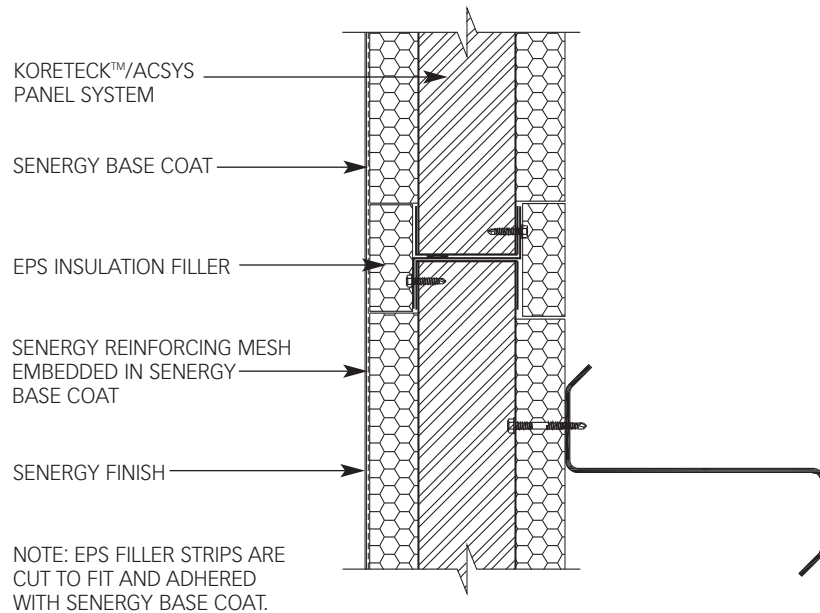
ACSYS-01 TYPICAL SENERGY SURFACING SYSTEM APPLICATION



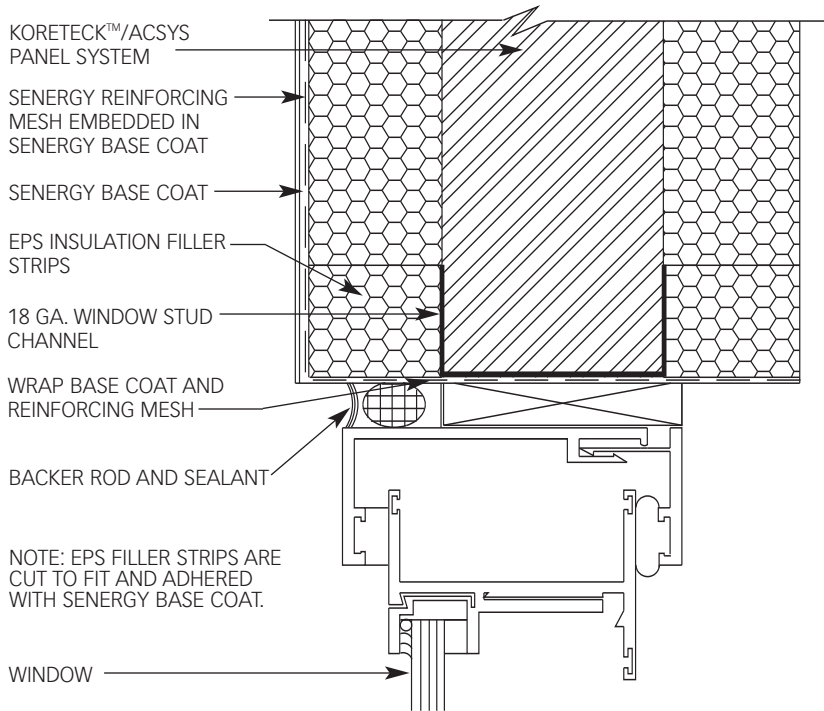
ACSYS-02 TYPICAL AESTHETIC REVEAL DETAIL



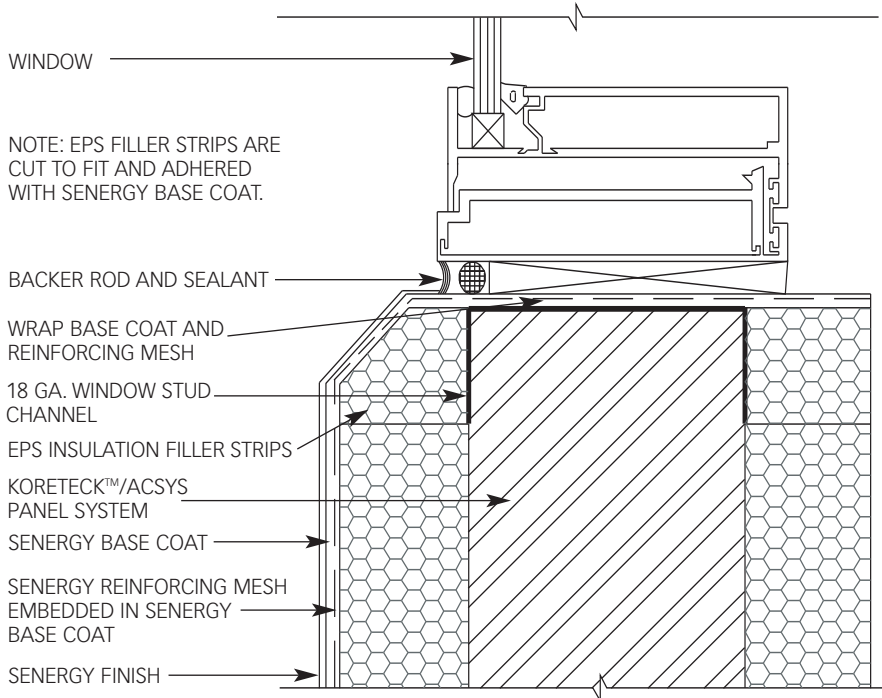
ACSYS-03 TYPICAL ARCHITECTURAL SHAPE APPLICATION



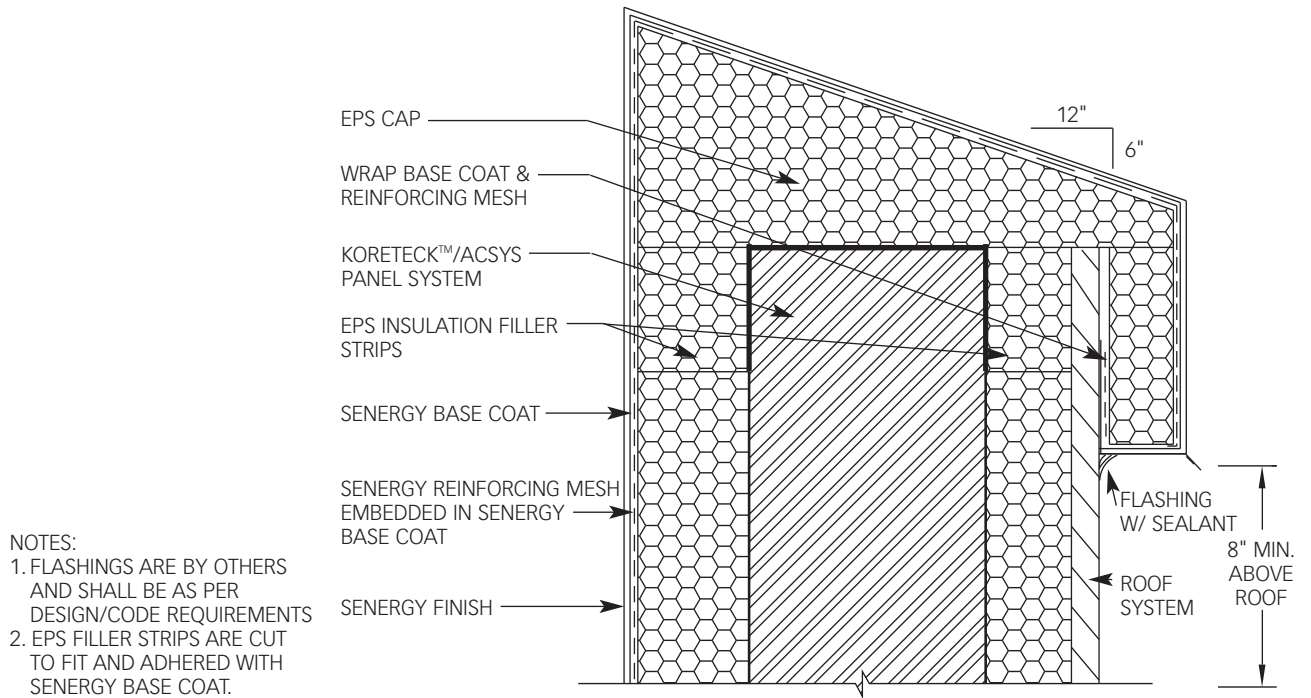
ACSYS-04 TYPICAL STACKED PANEL CONNECTION DETAIL



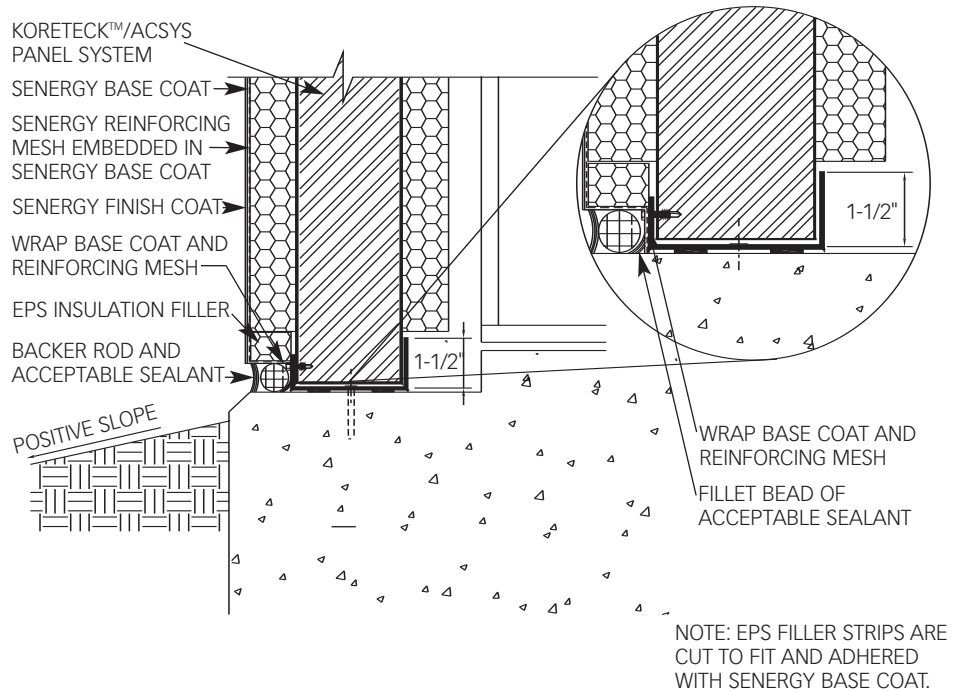
**ACSYS-05 TYPICAL ACSYS PANEL SYSTEM WINDOW HEAD/JAMB
DETAIL**



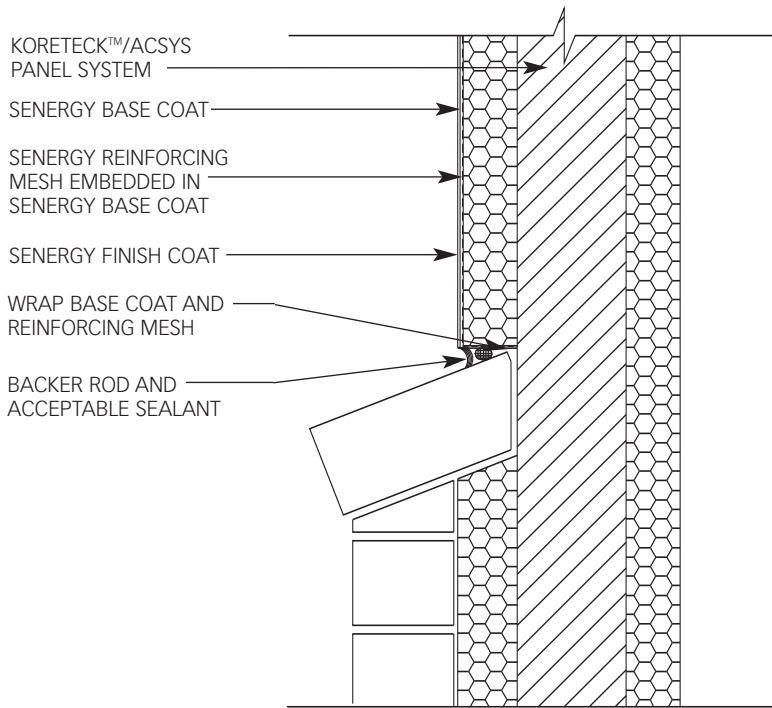
ACSYS-06 TYPICAL WINDOW SILL DETAIL



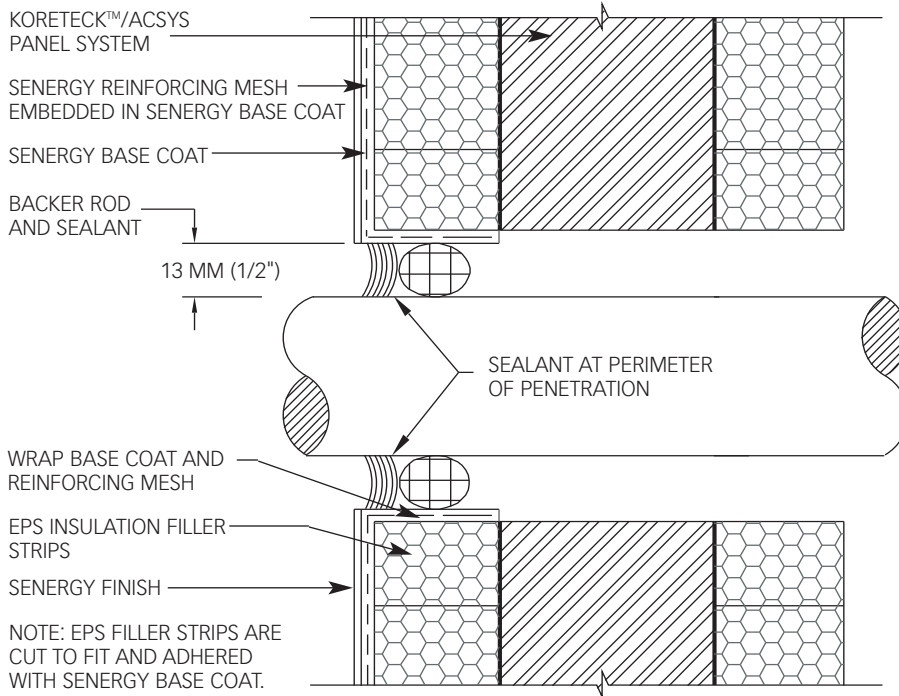
ACSYS-07 TYPICAL PARAPET CAP DETAIL



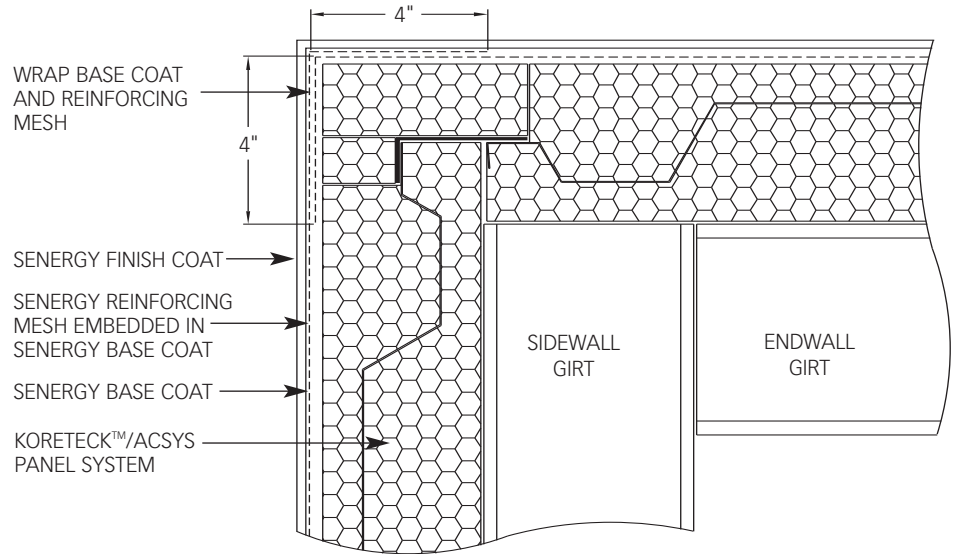
ACSYS-07 TYPICAL TERMINATION AT FOUNDATION



ACSYS-09 TYPICAL TERMINATION AT BRICK VENEER

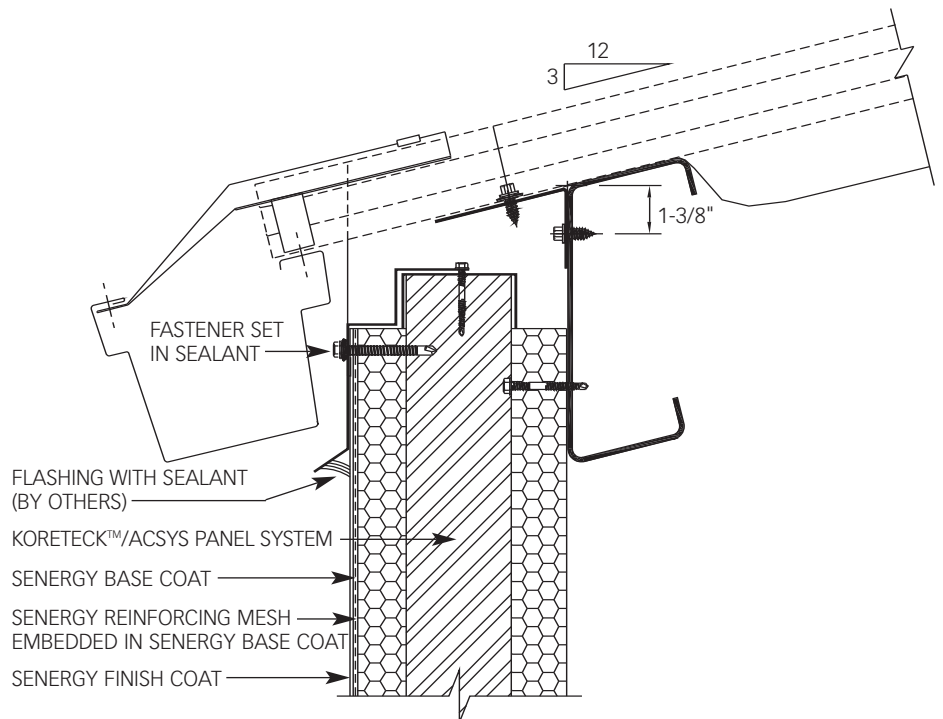


ACSYS-10 TYPICAL PIPE PENETRATION

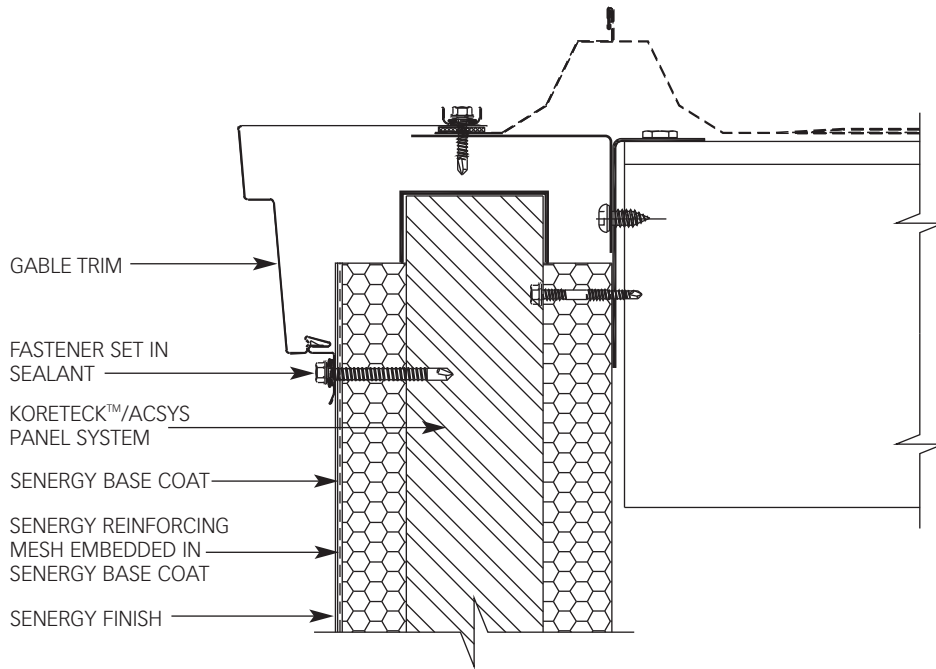


NOTE: EPS FILLER STRIPS ARE CUT TO FIT AND ADHERED WITH SENERGY BASE COAT.

ACSYS-11 TYPICAL CORNER APPLICATION



ACSYS-12 TYPICAL EAVE DETAIL



ACSYS-13 TYPICAL GABLE DETAIL

General Notes

These details are presented in good faith by Degussa Wall Systems, Inc. and represent typical and/or general conditions. They are offered as a guide for consideration to assist the designer, specifier, installer and/or owner. The responsibility remains with the user for the design of any system. For conditions not shown, consult Degussa Wall Systems, Inc. for specific recommendations. Consult current Senergy technical bulletins for such information as acceptable sealants, insulation attachment methods, installation of air/weather barriers, residential policy, code and test reports, geo-climatic considerations, etc. Installation requirements for sealant (joint size configuration, primers, bond breakers) shall be in accordance with sealant manufacturer's specifications and instructions.

Technical Support

Consult the Degussa Wall Systems Technical Services Department for specific recommendations concerning all other applications. Consult the Senergy website, www.senergy.cc, for additional information about products and systems and for updated literature.

Disclaimer

This information and all further technical advice are based on Degussa's present knowledge and experience. However, Degussa assumes no liability for providing such information and advice including the extent to which such information and advice may relate to existing third party intellectual property rights, especially patent rights. In particular, Degussa disclaims all CONDITIONS AND WARRANTIES, WHETHER EXPRESS OR IMPLIED, INCLUDING THE IMPLIED WARRANTIES OF FITNESS FOR A PARTICULAR PURPOSE OR MERCHANTABILITY. DEGUSSA SHALL NOT BE RESPONSIBLE FOR CONSEQUENTIAL, INDIRECT OR INCIDENTAL DAMAGES (INCLUDING LOSS OF PROFITS) OF ANY KIND. Degussa reserves the right to make any changes according to technological progress or further developments. It is the customer's responsibility and obligation to carefully inspect and test any incoming goods. Performance of the product(s) described herein should be verified by testing and carried out only by qualified experts. It is the sole responsibility of the customer to carry out and arrange for any such testing. Reference to trade names used by other companies is neither a recommendation, nor an endorsement of any product and does not imply that similar products could not be used.

Degussa Wall Systems, Inc.

3550 St. Johns Bluff Road South
Jacksonville, FL 32224-2614

Phone 800 • 221 • 9255

Fax 904 • 996 • 6300

www.senergy.cc