

BP/LBP/RP6

Bearing Plates

Bearing plates give greater bearing surface than standard cut washers, and help distribute the load at these critical connections.

The BP $\frac{1}{2}$ -3 and BP $\frac{5}{8}$ -3 are 3" x 3" bearing plates that meet the latest requirements of the IRC and IBC. These plate washers are available uncoated or with a hot-dip galvanized (HDG) coating.

The BPS and LBPS are bearing plates that offer increased flexibility while meeting the latest requirements of the code for 2x4 and 2x6 walls. The slotted hole allows for adjustability to account for bolts that are not in the middle of the sill plate.

The BP $\frac{5}{8}$ SKT uses $\frac{1}{4}$ " x $1\frac{1}{2}$ " Strong-Drive® SDS Heavy-Duty Connector screws to provide lateral resistance when $\frac{5}{8}$ " diameter sill holes are overdrilled (screws are provided). The shear capacity of the connection and the sill/anchor bolt shall be determined by the Designer for each installation.

The RP6 retrofit plate is installed on the outside of masonry buildings and helps tie the walls to the roof or floor structure with a $\frac{3}{4}$ "-diameter rod.

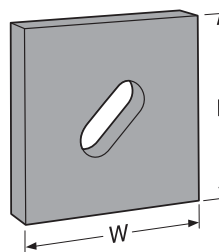
Material: See table

Finish: LBP, LBPS — Galvanized; BP $\frac{1}{2}$ -2, BP $\frac{5}{8}$ S — Zinc Plated; BPS, BP — None; RP6 — Simpson Strong-Tie® gray paint. BPs, BPSs and RP6 may be ordered HDG; LBP and LBPS products may be ordered ZMAX®; contact Simpson Strong-Tie; see Corrosion Information, pp. 15–18.

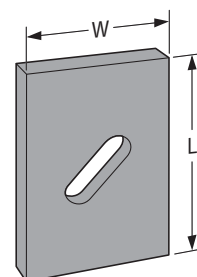
Installation:

- See General Notes
- BP/BPS — For shearwall applications, position edge of plate washer within $\frac{1}{2}$ " of sheathed edge of sill plate
- BPS-6 plate washers are sized to accommodate the $\frac{1}{2}$ " from the sheathed edge in single- and double-sheathed 2x6 walls
- BPS slotted bearing plate does not require an additional cut washer when used with Titen HD® Heavy-Duty screw anchors

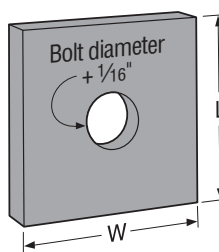
Codes: See p. 14 for Code Reference Key Chart; 2012/2015 IRC R602.11.1, 2015 SDPWS 4.3.6.4.3



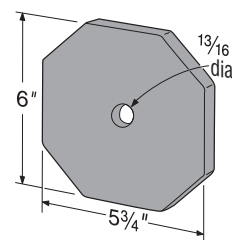
BPS
(LBPS similar)



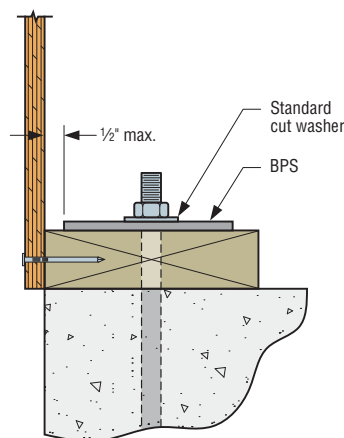
BPS $\frac{1}{2}$ -6
(Other models similar)



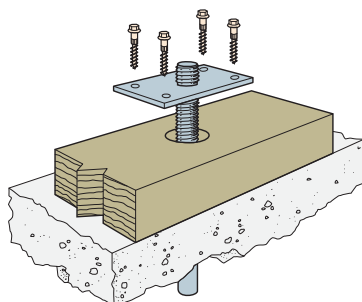
BP
(LBP similar)



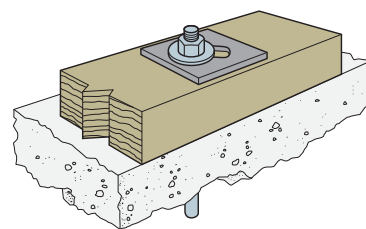
RP6



**Typical BPS Installed
as a Shear Anchor**



**The BP $\frac{5}{8}$ SKT is used when
 $\frac{5}{8}$ " diameter sill bolt holes
are overdrilled**



Typical BPS Installation

BP/LBP/RP6

Bearing Plates (cont.)

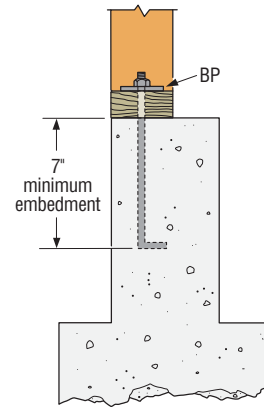
These products are available with additional corrosion protection.
For more information, see p. 18.

Bolt Diameter (in.)	Model No.	Thickness	Dimensions (in.)		Code Ref.
			W	L	
3/8	BP3/8-2	3/16"	2	2	I1, FL
1/2	LBP1/2	9/64"	2	2	190
	LBPS1/2	9/64"	3	3	
	BPS1/2-3	3 ga.	3	3	
	BPS1/2-6	3 ga.	3	4 1/2	
	BP1/2	3/16"	2	2	I1, FL
	BP1/2-3	3 ga.	3	3	
5/8	LBP5/8	9/64"	2	2	190
	LBPS5/8	9/64"	3	3	
	BPS5/8-3	3 ga.	3	3	
	BPS5/8-6	3 ga.	3	4 1/2	
	BP5/8-2	3/16"	2	2	I1, FL
	BP5/8SKT	3 ga.	4	2	190
	BP5/8	1/4"	2 1/2	2 1/2	
	BP5/8-3	3 ga.	3	3	I1, FL, 190
3/4	BP3/4-3	3 ga.	3	3	190
	BPS3/4-3	3 ga.	3	3	
	BPS3/4-6	3 ga.	3	4 1/2	
	RP6	3/8"	6	5 3/4	
7/8	BP7/8-2	3/8"	1 15/16	2 1/4	190
	BP7/8	5/16"	3	3	
1	BP1	3/8"	3 1/2	3 1/2	

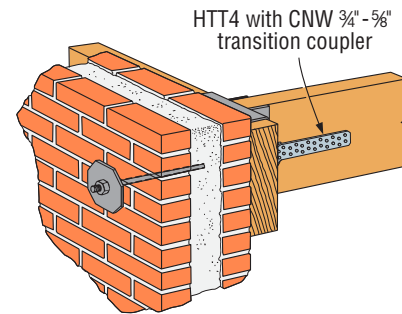
1. BP5/8SKT sold as a kit.

2. Standard cut washer required with BPS1/2-3, BPS5/8-3, BPS3/4-3, BPS1/2-6, BPS5/8-6 and BPS3/4-6 (not provided) per the 2012/2015 IRC and 2015 SPDWS.

3. 3 gauge is 0.229".



Typical BP Installed with a Mudsill Anchor Bolt



Typical RP6 Installation