

- PROVEN
- QUALITY
- PERFORMANCE



MADE IN U.S.A.

# PROVEN...

## PROVEN TECHNOLOGY

With a 25-year track record of reliable service, *FLUSHMATE*® has been the choice of all major domestic and international fixture manufacturers.

With millions of systems installed worldwide in a variety of installations, such as hotels, healthcare facilities, public restrooms, and homes, this system has a proven record of exceeding expectations.

*FLUSHMATE*'s proven technology has fewer moving parts, resulting in fewer servicing needs than other competing technologies. So, for one-flush performance that saves more water, *FLUSHMATE* is the clear choice.

# QUALITY...

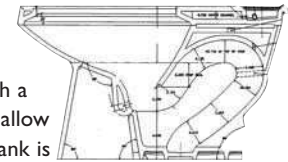
## QUALITY DESIGN

In response to our customer needs, *FLUSHMATE* has been designed with continuous improvements to be the most reliable, consistent, and trouble-free system available.

The system meets every recognized standard, including ASSE, ANSI, CSA and NOM.

The specialized bowl is designed with a large and over-simplified trapway to allow for the easy removal of waste. The tank is designed as a non-sweating barrier to eliminate wet floors around the toilet. The larger water surface area improves hygiene and keeps the bowl cleaner.

The *FLUSHMATE* system offers a ten-year warranty on the replacement components and a lifetime limited warranty on the *FLUSHMATE* tank.



# PERFORMANCE...

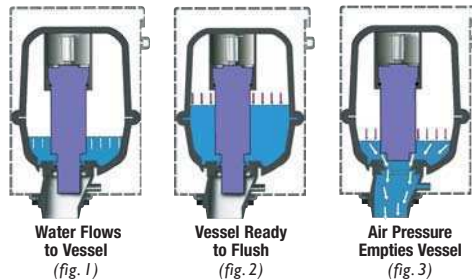
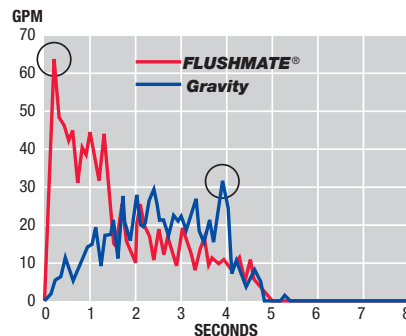
## SUPERIOR PERFORMANCE

The Sloan *FLUSHMATE* system provides the highest performance capability available today in the ULF (Ultra-Low Fixture) category. That means the system consumes less water per flush. This remarkable performance is achieved by using compressed air inside the tank, which creates a **Turbo-Charged** flushing action for effective bowl cleaning. Compared to other types of low consumption water closets, *FLUSHMATE* offers many distinct advantages.

## HOW IT WORKS

As water enters the tank (*fig. 1*), the air inside is trapped and compressed. A built-in regulator limits the incoming water pressure to 35 psi/2.4 bars.

When the tank's internal pressure reaches 35 psi/2.4 bars (*fig. 2*), the toilet is ready to flush. When flushed (*fig. 3*), air pressure pushes water through the toilet at more than two times the rate of a traditional gravity system. The whole flush cycle takes less than five seconds. Pressure technology requires a specially designed bowl. Gravity-type toilets cannot be retrofitted with *FLUSHMATE*.



# PERFORMANCE WITH

## ***FLUSHMATE® III***

*Less than 1.6 gpf / 6.0 Lpf*

**For All Your Water  
Conservation Requirements**

*FLUSHMATE III* has set the world standard for ULF performance! This operating system is used by more toilet manufacturers than all other pressure-assist systems combined. The reason is superior performance and reliability.



### ***FLUSHMATE® III* Installation Requirement**

ULF Toilets equipped with *FLUSHMATE III* install in the same standard dimensional area as a conventional toilet. A minimum of 20 psi/1.4 bars water pressure is required, which is less than what is typically found in most residential and commercial applications. Toilets equipped with *FLUSHMATE III* consume less than 1.6 gpf/6.0 Lpf, and are available in 10", 12", and 14"; rough-in models, in all popular styles and colors. Because of their unique hydraulic requirements, *FLUSHMATE* products cannot be retrofitted to existing toilet bowls.

### **Flush Valve Cartridge Assembly**

Actuator with setscrew

### **Lower Supply Group with Hose**

Supply Shank with Screen

Relief Valve (preset at 60 psi)

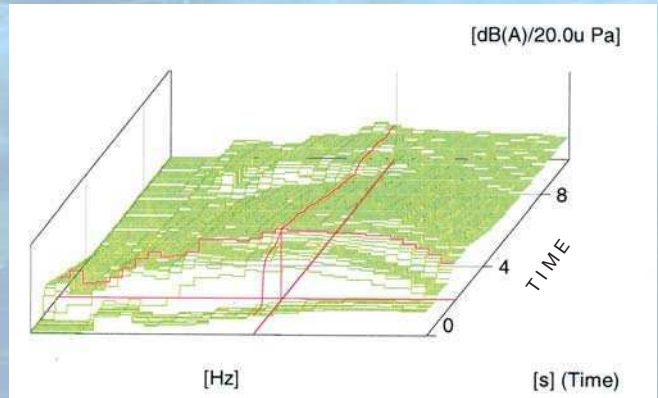
Pressure regulator with Back Check (preset at 35 psi/2.4 bars)



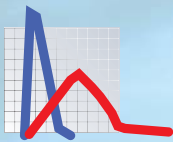


# FLUSHMATE® is Quieter

The bowl design is primarily responsible for the sound produced during a flush. FLUSHMATE® engineering can measure any phase of the flush cycle and examine the sound in a multitude of ways using advanced software and their acoustical full reverberation chamber. Toilets from around the world are tested, producing information to help manufacturers improve bowl design. Based on sound test evaluations, the sound of FLUSHMATE-equipped toilets is comparable to most other low-consumption toilets.

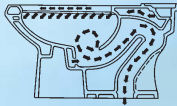


## Superior Performance



The peak flow of pressure-assist technology is more than double that of gravity-type fixtures at 70 gallons/265 liters per minute. It's a remarkable, simple and effective design that has made FLUSHMATE® the performance leader in pressure-assist flushing.

## Advanced Bowl Design



Since a pressure-assist bowl does not require a siphon to extract waste, the trap dimension is the same throughout. This allows for the easy removal of waste throughout the trapway. In combination with a specifically designed jet at the entrance of the trapway, FLUSHMATE-equipped toilets rapidly push the waste out of the bowl.

## Largest Water Surface Area



FLUSHMATE-equipped toilets stay cleaner due to a large water surface area and vigorous flushing action.

## Non-Sweating Tank



Water is contained in the FLUSHMATE vessel. The result is a non-sweating toilet – so the floor around the toilet remains dry. The additional cost of an insuliner tank is not necessary.

## Conventional Installation



Installs in the same standard dimensional area as a conventional water closet, with no special tools. Fewer moving parts, so there's less chance for things to go wrong.

## Water Conservation



FLUSHMATE® IV flushes less than 1.0 gpf/4 liters per flush, and does not leak. Compared to other systems, FLUSHMATE IV saves 40% to 70% more water.

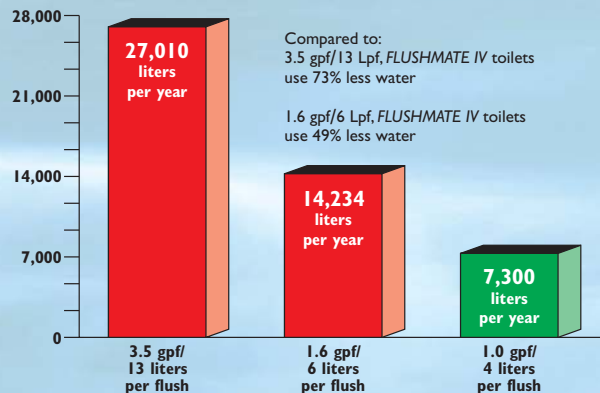
## How Much Water Does Your Toilet Use?

If your toilet flushes 3.5 gal/13 liters per flush, one person can consume as much as 19.5 gal/74 liters\* per day, or 7,135 gal/27,010 liters per year.

If your toilet flushes 1.6 gal/6 liters per flush, one person can consume as much as 10 gal/39 liters\* per day, or 3,760 gal/14,234 liters per year.

If your toilet is equipped with FLUSHMATE IV, one person can consume as little as 5 gal/20 liters per day, or 1,928 gal/7,300 liters per year.

\*Includes toilet leakage

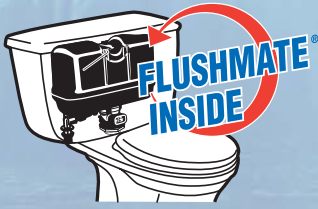


FLUSHMATE pressure-assist technology has been successfully used for more than 25 years. With millions of FLUSHMATEs installed, FLUSHMATE has a proven track record for water savings, reliability, and reduced maintenance.

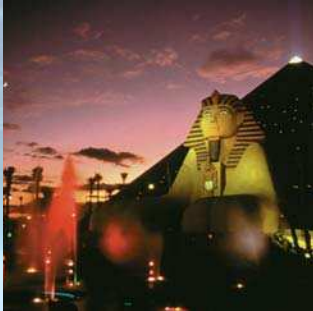
Both FLUSHMATE systems are designed so that their flush volumes cannot be adjusted. The water savings are sustained for the life of the fixtures.

All FLUSHMATE offers a ten-year warranty on the replacement components and a lifetime limited warranty on the FLUSHMATE tank.

The Best Toilets Have



# The Choice is Clear: Sloan *FLUSHMATE*<sup>®</sup> for Performance and True Water Conservation



Toilets with *FLUSHMATE*<sup>®</sup> inside offer the public the best opportunity to achieve maximum water conservation without sacrificing performance. Sloan *FLUSHMATE* supplies *FLUSHMATE* pressure-assist systems to virtually every leading fixture manufacturer. Toilets with *FLUSHMATE* inside are offered in a wide variety of styles and colors. In installation after installation, no other pressure-assist system has the proven track record for reliability and performance.



### IN HOTELS

*FLUSHMATE* toilets are installed in leading hotels and motels, assuring guests' satisfaction.



### IN RESIDENTIAL HOMES

*FLUSHMATE* toilets are preferred by professional builders in a nationwide survey because of their superior performance characteristics. The multi-housing market appreciates the enhanced reliability of the *FLUSHMATE* system.



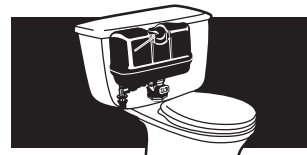
### IN LIGHT COMMERCIAL APPLICATIONS

Whether it's a restaurant or a small office complex, the improved hygiene and cleanliness of toilets with *FLUSHMATE* is recognized by customers and owners.

In application after application, Sloan *FLUSHMATE* proves to be the leading conservation choice without compromising performance.

### Warranty

Sloan *FLUSHMATE* offers a ten-year warranty on the replacement components and a lifetime limited warranty on the *FLUSHMATE* tank.



## **FLUSHMATE**<sup>®</sup>

A Division of Sloan Valve Company

10500 Seymour Avenue  
Franklin Park, IL 60131  
Phone: 800-580-7141  
Fax: 847-671-4611  
www.flushmate.com

Manufactured under one or more of the following U.S. Patents: 3,817,279; 3,817,286; 3,817,489; 3,820,171,754; and 4,233,698. Also covered by various foreign patents (country and number available upon request) and other patents pending.

ISO 9001 Quality System Certified



*FLUSHMATE*<sup>®</sup> is a registered trademark of Sloan *FLUSHMATE*.

FLU6127.1 1008