



SPECGuide



SPECCHEM 
Solution to Service

SPECICHEM PRODUCT INDEX



FORM RELEASE AGENTS

Bio Strip WB	100% biodegradable water-based form release agent
Deco Liquid Release	Root beer scented release agent for decorative stamps
Dry-Deck WB	Water-based architectural form release agent (Drying-type)
Form Seasoning WB	Water-based aluminum form seasoning treatment
ReAxion Concentrate	100% biodegradable water-based form release concentrate
SpecStrip	General purpose reactive form release agent
SpecStrip WB	Water-based general purpose reactive form release agent
SpecStrip Plus	Low odor premium reactive form release agent
SpecStrip Supreme	Water clear premium reactive form release agent
Precast 80	Fast drying premium reactive form release
Tri Act	Multi-purpose form treatment concentrate

CURES & SEALERS

Cure & Seal 25	25% solids solvent-based cure & seal (ASTM C-1315 compliant)
Cure & Seal 25 EX	25% solids, low VOC, solvent-based cure & seal (ASTM C-1315 compliant)
Cure & Seal 25 UV	25% solids solvent-based cure & seal (ASTM C-1315 Class A compliant)
Cure & Seal 25 UV EX	25% solids, low VOC, solvent-based cure & seal (ASTM C-1315 Class A)
Cure & Seal 30	30% solids solvent-based cure & seal (ASTM C-1315 compliant)
Cure & Seal 30 EX	30% solids, low VOC, solvent-based cure & seal (ASTM C-1315 compliant)
Cure & Seal WB	Water-based cure & seal (ASTM C-309 Type 1, Class A & B)
Cure & Seal WB 25	25% solids water-based cure & seal (ASTM 1315 Class A compliant)
Cure & Seal WB 30	30% solids water-based cure & seal (ASTM C-1315 Class A compliant)
Cure Shield	One-step, solvent-based cure & seal containing silane (ASTM C-1315)
Cure Shield EX	One step, low VOC Cure & Seal containing silane (ASTM C-1315)
E-Cure	Clear concrete curing compound (ASTM C-309 Modified)
SC Cure 500®	Lithium-based concrete curing compound
Crystal Rez	Clear water based dissipating resin cure (ASTM C-309 Type 1 Class A & B)
SpecRez	Water based dissipating resin cure (ASTM C-309 Type 1 Class A & B)

PAVING CURING COMPOUNDS

Pave Cure AMS	High solids white pigmented poly-alpha-methylstyrene curing compound
Pave Cure WW	Water-based, white pigmented wax membrane curing compound (DOT)
Pave Cure CW	Water-based, clear wax membrane curing compound (DOT)
Pave Cure Rez	Water-emulsified, resin-based curing compound (DOT)
Pave Cure Rez White	White pigmented, water-emulsified resin-based curing compound (DOT)
SpecCity White	White pigmented, water-based wax curing compound (Non-DOT)

CURES & HARDENERS

Cure Hard	Sodium silicate cure & dustproofer
SpecHard	Siliconate sealer/densifier
LithSeal SC	Lithium silicate concrete sealer/densifier
SpecGuard	High gloss concrete protectant/polish
Spec-O-Lith	Water-based, liquid fluosilicate hardener concentrate

BONDBREAKERS

SpecTilt 100	Premium reactive solvent-based tilt-up bondbreaker
SpecTilt WB	Premium reactive water-based bondbreaker
SpecTilt QD	Quick drying reactive solvent-based bondbreaker
SpecTilt EX	Quick dry, low VOC solvent-based bondbreaker

EVAPORATION RETARDERS

SpecFilm RTU	Evaporation retardant & finishing aid
SpecFilm Concentrate	Concentrated evaporation retardant & finishing aid

SURFACE RETARDERS

SpecEtch	Horizontal surface retarder
SpecEtch D	Horizontal deep surface retarder

CLEANERS, STRIPPERS & MISC. CHEMICALS

Orange Peel	Biodegradable citrus based solvent & degreaser
K-Set	Non-corrosive, non-chloride masonry accelerating admixture
Sealer ReNew	High strength deblushing solvent/cleaner
Solvent 100	High strength solvent cleaner
SpecBlast	Biodegradable cleaner to remove hardened concrete from forms, tools, etc.
Xylene	High strength solvent cleaner for resin based compounds

WATER REPELLENTS

SpecShield WB	Silane-Siloxane water-based penetrating sealer
SpecSilane 20 WB	20% solids, water-based deep penetrating sealer
SpecSilane 40 WB	40% solids, water-based deep penetrating sealer
SpecSilane 100	100% solids, deep penetrating silane sealer

PROTECTIVE SEALERS

Aqua Shine	High-solids, water-based, methacrylate sealer
Crystal Shine	High-gloss, methacrylate, lacquer sealer
Crystal Shine HS	High-solids, high-gloss, methacrylate, lacquer sealer
Deco Shine	Premium gloss & durability exterior methacrylate sealer
Deco Shine Matte	Matte finish protective exterior methacrylate sealer
Surface Shine	High-gloss acrylic sealer (ASTM C-1315 Class A)
Surface Shine EX	High-gloss, low VOC acrylic sealer (ASTM C-1315 Class A)
Surface Shine WB	High-solids water-based acrylic sealer (ASTM C-1315 Class A)
Surface Shine Gray/Brown	Single package, ready to use, gray/brown pigmented sealing system
Surface Shine Gray EX	25% solids low VOC solvent-based pigmented cure & seal (ASTM C-309)
Surface Shine Brown EX	25% solids low VOC solvent-based pigmented cure & seal (ASTM C-309)
Surface Grip	Slip resistant additive

EPOXY BONDING AGENTS

SpecPox 1000	ASTM 881 compliant hi-mod, low viscosity epoxy
SpecPox 2000	ASTM 881 compliant hi-mod, medium viscosity epoxy
SpecPox 3000	ASTM 881 compliant hi-mod, gel viscosity epoxy
SpecPox 3000 FS	Fast setting ASTM 881 compliant hi-mod, gel viscosity epoxy

EPOXIES

SpecPox Binder	ASTM 881 compliant low-mod, epoxy binder/adhesive
SpecPox C.J.	100% solids, semi-rigid epoxy control joint filler
SpecPox Coating	100% solids, high-build epoxy coating
SpecPox Grout	High Strength epoxy grout
SpecPox Mortar	Three component, 100% solids, multi-purpose, epoxy mortar
SpecPox Sealer	70% solids penetrating epoxy sealer

CEMENTITIOUS GROUTS

SC Metallic Grout	High strength, non-shrink, metallic grout (meets ASTM C-1107)
SC Multi-Purpose Grout	Non-shrink, nonmetallic construction grout (meets ASTM C-1107)
SC Precision Grout	High flow/high strength, non-shrink, non-metallic grout (meets ASTM C-1107)
UW Grout	Underwater cementitious grout

DRY-SHAKE HARDENERS

Quartz Floor Hardener	Non-metallic, quartz, dry-shake floor hardener
-----------------------	--

REPAIR PRODUCTS

Duo Patch	Two-component, polymer-modified concrete repair mortar
Final Finish	Ultra-fine, rapid hardening/polymer-modified/concrete resurfacer
Precast Patch 5	Fast-setting, general purpose concrete repair mortar
Precast Patch	General purpose concrete repair mortar
Precast Patch Light	Light gray colored, fast-setting concrete repair mortar
RepCon® H	Single component, fiber reinforced, polymer-modified concrete repair mortar
RepCon® H-350	Single component, polymer-modified concrete repair mortar with corrosion inhibitor
RepCon® V/O	Single component, fiber reinforced, polymer-modified concrete repair mortar
RepCon® 928	Rapid hardening, single component, fiber reinforced, structural repair mortar
RepCon® UW Mortar	Fiber-reinforced underwater hand pack repair mortar
RevCrete	Polymer-modified concrete repair / resurfacing mortar
SC Foundation Coating	Polymer modified, cement based waterproofing coating
SpecPatch	General purpose concrete repair mortar
SpecPlug	Fast setting hydraulic cement designed to stop active water leaks
Super SpecPlug	Super fast-setting, hydraulic-cement mortar
SpecRock	Non-shrink, fast-setting, pourable anchoring cement
SpecFlow	Premium self-leveling cement-based underlayment
SpecSmooth	Polymer-modified concrete repair/resurfacing mortar for thin applications

ACRYLIC BONDING AGENTS

Strong Bond	Non-rewettable acrylic bonding agent & admixture
SpecWeld	Rewettable acrylic bonding agent
SpecPrime	Re-emulsifiable underlayment primer for SpecFlow



FORM RELEASE AGENTS

SPECHEM RELEASE AGENTS:

- Improve release of formwork
- Reduce concrete buildup on formwork and liners
- Protect formwork against rust
- Reduce cleaning of formwork
- Leave no residue, stain or discoloration on formed concrete
- Have non-offensive odors

APPLICATION PROCEDURES FOR FORM RELEASE PRODUCTS INCLUDE, BUT ARE NOT LIMITED TO:

- All forms should be free of dirt, rust, and other contaminants that will transfer to the concrete surface.
- New, non-coated plywood should be treated with a lime-water solution prior to first use. This lime-water solution will neutralize natural wood sugars in the plywood, which will result in a poor concrete surface.
- Apply form release on dry forms and in dry conditions.

- Form release should be spray applied using an atomizing or misting spray tip so that application may be in thin uniform films to maximize product performance and economy. A wide angle, low flow, fan-type spray tip is advisable.
- Over-application will not produce better results and may cause dusting, bug holes, and other surface defects.
- Excess material or puddles should be removed with a squeegee and/or absorbent rags.
- Application procedures can differ due to weather conditions. Please consult technical services for cold and hot weather application tips.
- When properly applied, SpecChem release agents will not leave any residue or stain on the concrete, producing a smooth, architectural concrete surface suitable for any secondary coating or topping. Coating manufacturer's recommendations for surface preparations should be followed.

BIO STRIP WB

A 100% biodegradable, water-based chemical release agent. Ideal for sensitive environmental situations such as bridge formwork over rivers and streams or potable water reservoirs. Provides quick, easy release and leaves an architectural bondable concrete surface.

DECO LIQUID RELEASE

A colorless liquid release formulated and recommended for use to texturize decorative and matte-type concrete. Deco Liquid Release forms a lubricating barrier that prolongs the life of the imprinting tools by decreasing the friction between the mats and the concrete.

DRY-DECK WB

Dries to form a durable, clear, waxy film which chemically reacts with the concrete to produce a smooth, architectural concrete finish. Dry-Deck WB provides quick, easy release and leaves an architectural bondable concrete surface.

FORM SEASONING WB

A water-based treatment for new aluminum forms. It oxidizes the elemental aluminum on the surface of new aluminum forms to properly season and prepare them for use.

REAXION CONCENTRATE

A 100% biodegradable, chemical release agent emulsion concentrate that when properly diluted with water (4 to 1) provides a positive release ideal for sensitive environmental situations such as bridge form work over rivers and streams or potable water reservoirs.

SPECSTRIP

A chemically reactive release agent specially engineered to positively prevent bonding of concrete to forms and form liners. SpecStrip does NOT contain any waxes or silicones.

SPECSTRIP PLUS

A premium, chemically reactive release agent specially engineered to positively prevent bonding of concrete to forms and form liners. SpecStrip Plus does NOT contain diesel, kerosene, wax or silicone.

SPECSTRIP WB

A chemically reactive, economical, water-based release agent to positively prevent bonding of concrete to forms. SpecStrip WB does NOT contain any waxes or silicones.

SPECSTRIP SUPREME

A highly refined, chemically reactive release agent engineered to positively prevent bonding of concrete to forms and form liners. SpecStrip Supreme does NOT contain diesel, kerosene, wax or silicone.

PRECAST 80

A chemically reactive fast drying release agent specially engineered to positively prevent bonding of concrete to forms in precast and shop use applications. Precast 80 does NOT contain diesel, wax or silicone.

TRIACT

A concentrated, highly reactive petroleum mixture that, when properly diluted, can be used as a reactive form release agent, an aluminum form seasoning agent, as well as a concrete softener and maintenance coating. This versatility reduces the need to inventory multiple products.



CURES & SEALERS

APPLICATION PROCEDURES FOR CURE AND SEAL PRODUCTS INCLUDE, BUT ARE NOT LIMITED TO:

- SpecChem curing and sealing compounds improve concrete hydration, protect concrete surfaces, improve durability, and enhance concrete appearance.
- When used for curing, cure and seals should be applied as soon as the surface water has disappeared and the concrete surface will not be marred by the applicator. Apply in a uniform coat. For a superior finish and added curing and sealing protection, apply a second coat at right angle to the first coat.
- When used for seal only, concrete surface must be clean, dry and free of all oil, grease and dirt stains and incompatible coatings prior to application. An application of cure and seal will renovate existing concrete, brick, or terrazzo floors. These surfaces will be brighter and easier to clean and maintain.
- Water-based cure and seals should be thoroughly agitated prior to application. Do not mix with a high speed mixer.
- Low-odor water-based cure and seals are ideal for both interior and exterior applications.
- Water based cures should not be allowed to freeze.
- Apply cure and seal with a low pressure sprayer using a wide angle, fan tip nozzle. Do not allow to puddle. Use a lamb's wool roller or pad to distribute any puddles.
- Apply cure and seal uniformly at specified rate. Apply second coat after the first coat has thoroughly dried. Apply second coat at right angles to each other.



WHAT IS ASTM 1315?

ASTM C-1315 replaces TTC-0800 as the curing and sealing specification for the industry.

- Type I, clear or translucent
- Type II, white pigmented
- Class A, non-yellowing, Gardner Color Standard No. 1
- Class B, moderate yellowing, Gardner Color Standard No. 3
- Class C, severe darkening and yellowing
- Minimum Solids Content: Type I and II are both a minimum of 25% solids

WHY SHOULD YOU CURE CONCRETE?

Curing is essential in the production of concrete that will have the desired properties. The strength and durability of the concrete will only be fully achieved if it is cured properly. It is very important to cure concrete immediately after final finishing.

- Reduces curling, scaling and crazing
- Reduces plastic shrinkage cracks
- Allows more uniform color
- Reduces dusting
- Achieves proper hydration of concrete for maximum strength and durability



CURE & SEAL 25

A VOC compliant, solvent-based acrylic polymer engineered to cure, seal, harden, and dust proof freshly placed concrete and improve the wearability and durability of aged concrete surfaces. ASTM C-309 Type 1, Class A & B ASTM C-1315 Type 1, Class B.

CURE & SEAL 25 EX

A fast drying, exempt solvent, VOC compliant acrylic polymer engineered to cure, seal, harden, and dustproof freshly placed concrete and improve the wearability and durability of aged concrete surfaces. ASTM C-309 Type 1, Class A & B ASTM C-1315 Type 1, Class B.

CURE & SEAL 25 UV

A VOC compliant, acrylic non-yellowing polymer engineered to cure, seal, harden, and dustproof freshly placed concrete and improve the wearability and durability of aged concrete surfaces. ASTM C-1315 Type 1, Class A and ASTM C-309, Type 1, Classes A & B.

CURE & SEAL 25 UV EX

A fast drying, exempt solvent, VOC compliant non yellowing, acrylic polymer engineered to cure, seal, harden, and dustproof freshly placed concrete and improve the wearability and durability of aged concrete surfaces. ASTM C-1315 Type 1, Class A and ASTM C-309, Type 1, Classes A & B.



CURE & SEAL 30

A VOC compliant, solvent-based, high-solids (30%) acrylic polymer engineered to cure, seal, harden, and dust proof freshly placed concrete and improve the wearability and durability of aged concrete surfaces. ASTM C-309 Type 1, Class A & B; ASTM C-1315 Type 1, Class B.

CURE & SEAL 30 EX

A fast drying, exempt solvent, VOC compliant acrylic polymer engineered to cure, seal, harden, and dustproof freshly placed concrete and improve the wearability and durability of aged concrete surfaces. ASTM C-309 Type 1, Class A & B; ASTM C-1315 Type 1, Class B.

CURE & SEAL WB

A water-based, VOC compliant acrylic polymer engineered to cure, seal, harden, and dust proof freshly placed concrete and improve the wearability and durability of aged concrete surfaces. This low-odor, water-based formulation is ideal for interior applications. ASTM C-309 Type 1, Class A & B.

CURE & SEAL WB 25

A high solids, water-based, VOC compliant acrylic polymer engineered to cure, seal, harden and dust proof freshly placed concrete and improve the wearability and durability of aged concrete surfaces. This low-odor, water-based formulation is ideal for interior applications. ASTM C-309 Type 1, Class A & B; ASTM C-1315 Type 1, Class A.

CURE & SEAL WB 30

A high solids, water-based, VOC compliant acrylic polymer engineered to cure, seal, harden and dust proof freshly placed concrete and improve the wearability and durability of aged concrete surfaces. This low-odor, water-based formulation is ideal for interior and exterior applications. ASTM C-309 Type 1, Class A & B; ASTM C-1315 Type 1, Class A.

CURE SHIELD

A solvent-based blend of silane and pure acrylic copolymers designed to cure and seal fresh concrete and provide additional protection to existing concrete. Meets ASTM C-1315.

CURE SHIELD EX

A unique, fast drying, exempt solvent based blend of silane and pure acrylic copolymers designed to cure and seal fresh concrete and provide additional protection to existing concrete. ASTM C-1315 compliant.

E-CURE

A leading edge technology, clear concrete curing compound developed to cure concrete, as well as, resolve compatibility issues related to flooring adhesives. E-Cure meets the moisture retention of ASTM C-309 on hard-trowelled concrete surfaces and may contribute to LEED credits.

SC CURE 500®

A leading edge technology, concrete curing compound that was developed to cure hard-trowelled concrete to be treated with a lithium silicate hardener/densifiers like LithSeal SC. SC Cure 500® meets the moisture retention of ASTM C-309 on hard-trowelled concrete surfaces and may contribute to LEED credits.

CRYSTAL REZ

A clear, dissipating resin-based water emulsion curing compound for use on freshly finished horizontal and vertical concrete surfaces. Crystal Rez is formulated to provide an effective curing membrane that will dry to a clear (non-yellowing) membrane. May contribute to LEED credits. ASTM C-309, Type 1 and 1D, Class A & B; AASHTO M-148, Type 1, Class A & B.

SPECREZ

A dissipating, resin-based water emulsion curing compound for use on freshly finished horizontal and vertical concrete surfaces. SpecRez is formulated to provide an effective curing membrane that will begin to dissipate after exposure to sunlight, weathering and/or traffic. May contribute to LEED credits. ASTM C-309, Type 1 and 1D, Class A & B; AASHTO M-148, Type 1, Class A & B.







PAVING CURING COMPOUNDS

APPLICATION PROCEDURES FOR CURING COMPOUNDS PRODUCTS INCLUDE, BUT ARE NOT LIMITED TO:

- Water-based curing compounds should be thoroughly agitated prior to application. Do not mix with a high speed mixer.
- Most curing compounds will have to be removed prior to applying a sealer (acrylic, urethane, etc.), hardener (sodium silicate type), water repellent (siloxane or silane type) or any other secondary coating or topping.
- The rate of dissipation for hydrocarbon resin-based curing compounds is dependant upon climatic conditions, the rate of application, and exposure to ultra-violet light. Under normal conditions, chemical and physical breakdown will start in 4-6 weeks. Typically, light abrasion along with low pressure water blasting is sufficient in cleaning resin curing compound residue.

WHAT IS ASTM C-309?

- ASTM C-309 Standard Specification
- Type 1, clear or translucent, without dye.
- Type 1-D, clear or translucent, with fugitive dye.
- Type 2, White Pigment
- Class A – no restriction on vehicle solids in the curing compound.
- Class B – vehicle solids restricted to all resin material.
- Water Retention: The liquid membrane-forming compound, when tested in accordance with ASTM C-156, shall restrict the loss of water to not more than 0.55 kg/m² (95% of reactive moisture retained) of surface in 72 hours.
- Drying Time: The liquid membrane-forming compound shall be dry to the touch in not more than 4 hours.
- Coverage: 200 square feet per gallon.
- Exclusion: Sodium Silicate based curing compounds are excluded.

PAVE CURE AMS

A white pigmented, high solids alpha-methylstyrene (AMS) concrete curing compound. When properly applied, Pave Cure AMS forms a continuous membrane that controls curing for strong and durable concrete. Meets ASTM C-309, Type II, Class A and AASHTO M-148.

PAVE CURE WW

A white pigmented, water-based, high solids wax curing compound. Ideal for projects where high reflectance and maximum curing properties are required, such as state highways, city and county roads, bridge decks, and parking lots. Meets ASTM C-309, Type II, Class A and AASHTO M-148.

PAVE CURE CW

A clear, high-solids, water-based wax concrete curing compound. Pave Cure CW is ideal for application on new exterior concrete surfaces such as highways, airports and other paving surfaces. Meets ASTM C-309, Type I, Class A and AASHTO M-148. (Also available as Type 1D).

PAVE CURE REZ

A water-emulsified, resin-based curing compound. Ideal for concrete surface where a wax base cure is not acceptable and where a secondary coating or topping is required. Meets ASTM C-309, Type I (Type ID available), Class A & B and AASHTO M-148, Class A & B.

PAVE CURE REZ WHITE

A white pigmented, water-emulsified, resin-based curing compound. Excellent light reflectance makes Pave Cure Rez White suitable for state highway and other exterior pavements. Meets ASTM C-309, Type II, class A & B and AASHTO M-148, Class A & B.

SPEC CITY WHITE

White pigmented, water-based, wax curing compound. When properly applied, SpecCity White forms a continuous membrane that controls curing for strong and durable concrete. SpecCity White is commonly used for city streets, parking lots, curbs and gutters. Meets ASTM C-309, Type II, Class A and AASHTO M-148, Type II, Class A.





CURES & HARDENERS

APPLICATION PROCEDURES FOR LIQUID FLOOR HARDENERS INCLUDE, BUT ARE NOT LIMITED TO:

- SpecChem liquid hardeners are typically used to harden and dust proof any concrete surface.
- Although not compliant to ASTM C-309 as a membrane forming curing compound,
- SpecChem floor hardeners may be used as a curing compound.
- Liquid hardener penetration is crucial to performance. Surface must be clean and sound.
- Previously applied membrane curing compounds and coatings must be completely removed prior to application of liquid hardener. SpecChem Orange Peel may be used to clean any foreign matter.
- An effective method to determine if the concrete surface is properly cleaned: place a few drops of water in different areas on the concrete. If the water is readily absorbed into the concrete, no additional cleaning is necessary.
- Preferred application method is with a low pressure sprayer using a fan-type spray nozzle.
- Surface finish and substrate can vary greatly, which changes application rates. Application rates can vary from 200-400 sq. ft. per gallon. Any white residue on the surface should be cleaned and rinsed immediately with water.

CURE HARD

A water-soluble concrete cure, hardener and dustproofer that can be used to provide a dust-free, hard surface on concrete floors to be painted or covered by any secondary coating or topping. May contribute to LEED credits.

SPEC HARD

A penetrating, water-based silicate chemical solution that seals, dust proofs and hardens interior concrete floors. Floors last longer, cost less to maintain, are safe to use and are guaranteed to resist dusting for years after application. May contribute to LEED credits.

LITHSEAL SC

A premium lithium silicate sealer/densifier for concrete surfaces. LithSeal SC deeply penetrates and reacts with cured concrete producing a calcium silicate hydrate within the concrete pores. Treated surfaces will remain breathable, reduce porosity, reduce dusting, reduce water permeability and increase abrasion resistance.

SPEC GUARD

A multi-component, water-based polymeric protectant that improves the appearance and durability of concrete floors. SpecGuard incorporates a cross-linking nanotechnology which aids penetration and adhesion creating a tough, stain-resistant coating.

SPEC-O-LITH

A water-based solution of fluosilicates, formulated to harden and dustproof concrete floors and improve the wearing characteristics of new or aged concrete and terrazzo. Spec-o-Lith is ideal for factories, warehouses, schools, hospitals, breweries, aeries, food processing plants and service garages.



BOND BREAKERS

APPLICATION PROCEDURES FOR SPECHEM

BONDBREAKERS INCLUDE, BUT ARE NOT LIMITED TO:

SpecChem Tilt-up bondbreakers are chemically reactive and specially engineered to provide a clean, easy lift of tilt-up panels. They contain no diesel, kerosene, waxes or silicones.

- Panels lift easier
- Chemically reactive for dependable performance
- Clean panels, no resin stains to delay coating application
- Leaves no residue, stain or discoloration
- Resists foot traffic abrasion and delays caused by weather

CURING NEW CONCRETE:

Ready to use. Do not dilute. When used as a cure, SpecChem bondbreakers should be applied immediately after the final steel trowelling, after the surface water has disappeared. Waiting too long to apply the cure coat can result in porous, dry casting slabs that will yield unfavorable results. The entire slab must be completely covered. When applied on tightly steel trowelled concrete @ 300 - 400 sq. ft. per gallon, SpecChem bondbreakers meet the moisture retention requirements of ASTM C-309.

BONDBREAKER COAT:

Casting slab must be well cured, smooth and dense. Remove all dust, dirt, and other contaminants prior to application. SpecChem bondbreakers should be ap-



plied just prior to placing reinforcing steel and within two weeks of pouring panels. Spray apply @ 400 sq. ft. per gallon or to the point of rejection. Wait until dry and then apply a second coat at right angles to the previous coat. Coverage rate of second coat is typically 500—700 sq. ft. per gallon. Complete uniform coverage is necessary on casting slab. If treated slab appears uneven or has light colored spots, this may indicate a porous slab that requires additional applications of bondbreaker. If after additional applications these light spots persist, thoroughly wet affected areas with water to fill concrete pores, squeegee off excess water, and then immediately reapply SpecChem bondbreaker. Allow bondbreaker to dry thoroughly. An adequate application is indicated only by the presence of a dry soap like feel apparent to the touch over the entire treated slab. Do not allow foot traffic until the slab is thoroughly dry.

BONDBREAKER COAT ON OLD CONCRETE:

Verify that the concrete surface is free of curing compounds or other substances that could adversely affect the performance of the bondbreaker. The slab must be smooth, dense, well cured and clean. Prior to placing reinforcing steel and within two weeks of pouring panels, flood casting slab surface with clean water. Squeegee off



SPEC TILT 100

A chemically reactive tilt-up bondbreaker specially engineered to provide a clean, easy lift of tilt-up panels. SpecTilt 100 does not contain diesel, kerosene, waxes or silicones.

SPEC TILT WB

A chemically reactive water based tilt-up bondbreaker specially engineered to provide a clean, easy lift of tilt-up panels. SpecTilt WB does not contain diesel, kerosene, waxes or silicones. VOC compliance in the OTC/LADCO/MRPO regions.

SPEC TILT QD

A quick drying chemically reactive tilt-up bondbreaker specially engineered to provide a clean, easy lift of tilt-up panels. SpecTilt QD does not contain diesel, kerosene, waxes or silicones.

SPEC TILT Ex

A chemically reactive tilt-up bondbreaker specially engineered to provide a clean, easy lift of tilt-up panels. SpecTilt Ex is formulated with a unique solvent blend allowing fast-drying, solvent-base performance along with VOC compliance in the OTC/LADCO/MRPO regions.

excess water and immediately apply SpecChem bondbreaker to the damp slab to the point of rejection, typically 300 - 500 sq. ft. per gallon. Allow to dry and then apply a second coat at the same rate but at right angles to the previous coat. Allow to dry thoroughly. As before, if light colored areas appear after drying, a porous slab may be indicated and reapplication will be necessary. The application rate can vary greatly depending upon the porosity of the slab and the ambient conditions. Do not under or over apply. It is the contractor's responsibility to ensure the even presence of the bond breaker at the surface of the casting slab prior to pouring concrete. Do not allow foot traffic until the slab is thoroughly dry.

PAINTING OF PANELS:

If bondbreaker has been properly applied and has not been over applied, painting the panels can be performed as soon as the moisture content in the concrete is at an acceptable level for the paint manufacturer. Coating manufacturers' instructions for surface preparation and application must be followed and supersede information in the data sheet.



EVAPORATION RETARDERS

SPECFILM RTU

A ready to use evaporation retarder that is specifically designed to form a thin monomolecular film to reduce rapid moisture loss from the concrete surface prior to curing. SpecFilm RTU reduces field issues with exposed concrete by minimizing plastic shrinkage cracks and surface crusting.

SPECFILM CONCENTRATE

An economical concentrate that can be diluted with potable water up to a 9 to 1 ratio, providing a very effective evaporation retardant and finishing aid for concrete flatwork. SpecFilm is especially effective when concreting operations must be performed in direct sun, wind, high temperatures or low relative humidity.

SURFACE RETARDERS

SPECETCH

A spray applied, chemical surface retarder specially engineered to expose the underlying aggregate of freshly placed horizontal concrete.

SPECETCH DEEP

A spray applied, chemical surface retarder specially engineered to expose the underlying aggregate of freshly placed horizontal concrete.



CLEANERS & STRIPPERS

ORANGE PEEL

A cost effective, natural citrus solvent cleaner and degreaser. An innovative solution for the toughest industrial applications. Orange Peel will effectively remove grease, grime and other contaminants from architectural concrete and other surfaces.

K-SET

A non-corrosive, accelerating admixture which contains no calcium chloride. K-Set accelerates the hydration of cement resulting in shorter setting times and high early strength. It also provides improved workability, helps prevent segregation and is a substantial aid in early stiffening for mortar and stucco mixes.

SEALER ReNew

A specially blended high strength solvent formulated to brighten and rejuvenate existing decorative acrylic sealers. Sealer ReNew can also be used to clean or strip deteriorated sealer and to release moisture blush (whitening) trapped beneath the sealer.

SPECBLAST

A chemically active, biodegradable liquid formulated to soften and remove concrete build up from concrete tools and equipment. SpecBlast is designed to help avoid the damaging effects of sandblasting, bush-hammering and jack-hammering hardened concrete from equipment.

SOLVENT 100

A clear, non-flammable, solvent formulated as a thinner and clean-up material for acrylics and resin based compounds.

XYLENE

A clear, flammable, high strength solvent formulated specially as a thinner and clean-up material for acrylics and resin based compounds. Xylene has a greater solvency strength (KB value) than Solvent 100.

WATER REPELLENTS

SPECSHIELD WB

A 100% reactive, waterborne silane-siloxane sealer. This clear, penetrating, breathable water repellent is designed for use on interior and exterior above grade concrete or masonry surfaces. SpecShield WB penetrates the surface and bonds directly with the substrate, which results in a surface that is highly resistant to both moisture and salt. VOC compliant.

SPEC SILANE 20 WB

A 20% solids, 100% reactive, waterborne silane sealer that is designed for use on interior and exterior above grade concrete or masonry surfaces. SpecSilane 20 WB helps protect concrete and masonry surfaces, decks, pavements, parking structures, ramps, bridges, marine platforms, etc. against the corrosive effects of de-icing salts, moisture and weathering to prevent spalling deterioration of concrete structures. VOC compliant.

SPEC SILANE 40 WB

A 40% solids, 100% reactive, waterborne silane sealer that is designed for use on interior and exterior above grade concrete or masonry surfaces. SpecSilane 40 WB helps protect concrete and masonry surfaces, decks, pavements, parking structures, ramps, bridges, marine platforms, etc. against the corrosive effects of de-icing salts, moisture and weathering to prevent spalling deterioration of concrete structures. VOC compliant.

SPEC SILANE 100

A 100% solids, 100% reactive, VOC compliant silane sealer. This clear, penetrating, breathable water repellent is designed for use on interior and exterior above grade concrete or masonry surfaces. SpecSilane 100 penetrates the surface and bonds directly with the substrate, which results in a surface that is highly resistant to both moisture and salt.

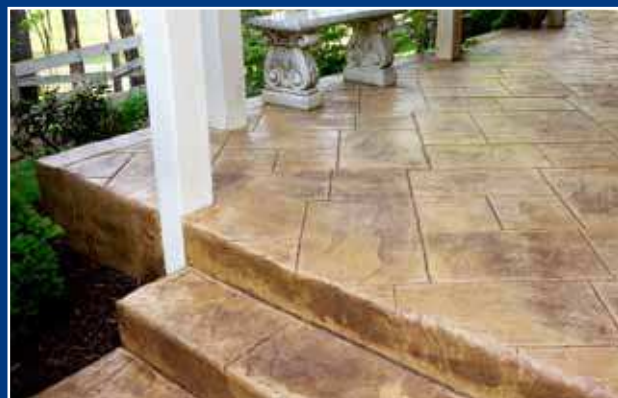




PROTECTIVE SEALERS

APPLICATION PROCEDURES FOR SEALER PRODUCTS INCLUDE, BUT ARE NOT LIMITED TO:

- The concrete surface must be clean and free of standing water. Remove any sealer or other material that may inhibit adhesion of the sealer.
- Always apply decorative sealers at the specified rate (typically 200-300 sq. ft. per gallon). Product may be sprayed with a hand held "pump-up" sprayer or an airless industrial sprayer. If roller applied, use a short napped solvent resistant sleeve.
- Two applications are recommended when an extra high gloss is desired or on especially porous surfaces. Allow the first application to cure before the second application. Dry time will be influenced by both temperature and humidity. Apply second application at a right angle to the first application to provide uniform, consistent coverage.



AQUA SHINE

A water-based, methacrylate cure and seal developed for interior and exterior applications, such as exposed aggregate, natural stone, brick, quarry tile, terrazzo and other concrete surfaces. This non-yellowing, low odor, durable sealer enhances the appearance of all treated surfaces with a high gloss sheen.

CRYSTAL SHINE

A lacquer sealer developed for interior and exterior applications, including exposed aggregate and other decorative concrete surfaces. Crystal Shine provides a clear protective coating that brings out the radiance and luster of all natural aggregate and preserves a long-lasting, durable finish.

CRYSTAL SHINE HS

A high solids lacquer sealer developed for interior and exterior applications, including exposed aggregate and other decorative concrete surfaces. Crystal Shine HS provides a clear protective coating that brings out the radiance and luster of all natural aggregate and preserves a long-lasting, durable finish.

DECO SHINE

A methacrylate sealer developed for interior and exterior applications, including exposed aggregate and other decorative concrete surfaces. Deco Shine provides a clear protective coating that brings out the radiance and luster of all natural aggregate and preserves a long-lasting, durable finish.

DECO SHINE MATTE

A methacrylate sealer developed for interior and exterior applications, including exposed aggregate and other decorative concrete surfaces. Deco Shine Matte provides a clear protective coating that produces a subtle, satin ("matte") finish that highlights the color and texture of surfaces without excessive shine.

SURFACE SHINE/SURFACE SHINE WB

A transparent, high gloss, non-yellowing acrylic polymer engineered as a cure and seal specifically for exterior surfaces such as exposed aggregate, natural stone, brick, quarry tile, terrazzo and other concrete surfaces. It is also suitable for interior applications. Surface Shine enhances the appearance of all treated surfaces with a high gloss sheen. It's also available in water-based.

SURFACE SHINE EX

A fast drying, exempt solvent, VOC compliant, high gloss, non-yellowing acrylic polymer engineered as a cure and seal specifically for exterior surfaces such as exposed aggregate, natural stone, brick, quarry tile, terrazzo and other concrete surfaces.

SURFACE SHINE GRAY/BROWN

A single package, ready to use, gray/brown pigmented sealing system. Surface Shine Gray/Brown is specifically designed to seal and add color to hide variation in concrete due to finishing or placement problems. This protective sealer is formulated for interior and exterior concrete and masonry floors.

SURFACE SHINE GRAY EX/BROWN EX

A fast drying, exempt solvent, VOC compliant gray/brown pigmented acrylic polymer engineered to cure, seal, harden, and dustproof freshly placed concrete and improve the wearability and durability of aged concrete surfaces.

SURFACE GRIP

A finely ground, slip resistant polymer additive designed specifically for use to improve the slip resistance of film-forming sealers.

Surface Grip can be added to all SpecChem and most other manufacturer's water and solvent based film-forming sealers.



EPOXY BONDING AGENTS & ANCHORING SYSTEMS

APPLICATION PROCEDURES FOR EPOXIES INCLUDE, BUT ARE NOT LIMITED TO:

ASTM C-881 is the standard specification for two component epoxy adhesives;

Type refers to the exposure:

Type I Non-load bearing, bonding hardened concrete to hardened concrete.

Type II Non-load bearing, bonding fresh concrete to hardened concrete.

Type III Bonding skid resistant materials to traffic bearing surfaces.

Type IV Load bearing, bonding hardened concrete to hardened concrete.

Type V Load bearing, Bonding fresh concrete to hardened concrete.

Grade refers to the viscosity of the mixed epoxy:

Grade 1 Low viscosity (water – motor oil)

Grade 2 Medium viscosity (syrup-honey)

Grade 3 Gel (peanut butter-caulk)

Class refers to the temperature limits at the time of placement, for both ambient and surface.

Class A Application temperature <40 degrees F

Class B Application temperature 40-60 degrees F

Class C Application temperature >60 degrees F

- Surface preparation is critical prior to applying epoxies. Surfaces to be bonded must be clean and structurally sound. Remove all oil, grease, dirt, laitance, curing compounds, and any other foreign matter. This includes bolts, rebar or threaded rod. All drilled holes must be cleaned out with a nylon brush. Re-

move dust and loose material. Use clean, oil free compressed air to blow out any remaining water, dust, or debris prior to application.

- Epoxies must be proportioned and mixed at the correct ratios. If the ratio is incorrect, performance of the cured epoxy may drop and/or the epoxy will not cure and set up.
- Thoroughly mix Part A and B separately. Then mix Part A and Part B together thoroughly for three minutes with a low speed motor using a Jiffy mixer or paddle. Mix only as much material as can be used within the pot life.
- When extending epoxy with aggregate always use clean, dry aggregate.
- Epoxies are very temperature dependent. High temperatures will accelerate set times and low temperatures will slow down set times.



SPECPOXY 1000

A two-component, low viscosity, moisture insensitive, high modulus, structural epoxy crack injection resin. SpecPoxxy 1000 is 100% solids, solvent free, low odor and high strength. ASTM C-881, Type I, II, IV, V, Grade 1, Class B & C.

SPECPOXY 2000

A two-component, multi-purpose, high modulus, medium viscosity epoxy for bonding, grouting and anchoring. SpecPoxxy 2000 is 100% solids, solvent free, low odor and high strength. ASTM C-881, Type I, II, IV, V, Grade 2, Class B & C.

SPECPOXY 3000

A two-component, moisture insensitive, high modulus, structural epoxy bonding gel. SpecPoxxy 3000 is 100% solids, solvent-free, low odor, high strength and non-sag. ASTM C-881, Type I, II, IV, V, Grade 3, Class B & C.

SPECPOXY 3000 FS

A rapid-setting, two-component, moisture insensitive, high modulus, structural epoxy bonding gel. SpecPoxxy 3000 FS is 100% solids, solvent-free, low odor, high strength and non-sag. ASTM C-881, Type I, II, IV, V, Grade 3, Class B & C.

SPECPOXY BINDER

A two-component, multi-purpose, low modulus, moisture tolerant epoxy binder adhesive that meets the requirements of ASTM C-881, Type III. SpecPoxxy Binder is 100% solids, solvent-free and low viscosity.

SPECPOXY C.J.

A two-component, semi-rigid epoxy for filling control and construction joints in industrial concrete floors. SpecPoxxy C.J. supports the joint edges and reduces spalling of the edges cause by wheel traffic. Complies with ACI 302 guidelines for "Epoxy Joint Filler."

SPECPOXY COATING

A two-component 100% solids, high performance epoxy floor coating system designed to provide concrete surfaces with excellent wear resistance in combination with protection against chemical attack. SpecPoxxy Coating is certified for use by the USDA.

SPECPOXY GROUT

A three-component, 100% solids, multi-purpose, high strength, non-shrink epoxy grout. SpecPoxxy Grout combines a high quality epoxy resin and curing agent with an engineered blend of graded aggregates.

SPECPOXY MORTAR

A three-component, 100% solids, multi-purpose, epoxy mortar. SpecPoxxy Mortar is specifically engineered to provide superior trowel-ability, compressive/tensile strength, impact and chemical resistance for use in industrial and commercial applications.

SPECPOXY SEALER

A 70% solids, two-component, low viscosity, penetrating epoxy sealer designed to protect new and existing concrete against de-icing salts and chemical attack. SpecPoxxy Sealer penetrates into the concrete pores to form a sub-surface seal to resist the penetration of liquid contaminants, chloride ions and chemical penetration.





CEMENTITIOUS GROUTS

APPLICATION PROCEDURES FOR GROUT PRODUCTS INCLUDE, BUT ARE NOT LIMITED TO:

SURFACE PREPARATION

Surfaces to be grouted should be clean and free from rust, dirt, grime, oil, curing compound and any other contaminants that will inhibit the bond of the cementitious grout. Determine method of placement and form area to be grouted. All forms should be sprayed with a SpecChem form release agent prior to placement. Forms should be caulked at all seams. Surface should be saturated surface dry (SSD). Remove excess or ponding water prior to placing grout.

MIXING PROCEDURES

Add the appropriate amount of clean, potable water for the batch size and then add the dry grout. Mix for a minimum of 3-4 minutes. Small quantities of grout can be mixed with a “drill and jiffy mixer.” Larger quantities should be mixed with a paddle blade mortar mixer. The

mixed grout should be transported to the grout head box and applied immediately. Head boxes are typically used for flowable or fluid grouts, while dry pack grouting does not require a head box.

PLACING PROCEDURES

Place all grout from one side to assure complete filling of the space being grouted. If necessary, use a rod or strapping to assist in placement of large or difficult applications. If pumping grout, pumping should be continuous and uninterrupted.

CURING PROCEDURES

All grout must be cured immediately following placement. Grouts may be cured by ponding with water, covering with wet rags or burlap, or applying a SpecChem curing compound such as Cure & Seal 25, Cure & Seal WB, or SpecRez.

SC METALLIC GROUT

A non-shrink, metal reinforced, cement-based grout designed for industrial applications subjected to dynamic and repetitive loading, SC Metallic Grout is recommended for applications requiring strength and durability. CRD C-621, ASTM C-1107.

SC MULTI-PURPOSE GROUT

A ready-mixed, non-shrink, non-metallic, high-strength structural grout. SC Multi-Purpose Grout is very versatile and may be used for both interior and exterior applications. Consistencies ranging from dry pack to high fluidity for grouting base plates, wall panels, bridge seats, etc. CRD C-621, ASTM C-1107.

SC PRECISION GROUT

A non-shrink, non-metallic, multi-purpose, cement-based grout. SC Precision grout is formulated for a wide variety of grouting applications, from damp pack to flowable through a controlled, positive expansion. This product is designed for high quality precision grouting. CRD C-621, ASTM C-1107.

UW GROUT

A pumpable underwater cement-based non-shrink grout for use in underwater repair such as pile restoration. UW Grout is designed for underwater use in tidal zones in applications requiring a non-shrink, non-metallic, wash out resistant grout in thicknesses from 1/2" up to several inches.

DRY SHAKE HARDENERS

QUARTZ FLOOR HARDENER

A mixture of finely graded, non-metallic quartz aggregates, plasticizer and cement binder that, when applied at the proper point in the concrete setting cycle, works into the concrete to become an integral part of the floor and produces a surface which is highly resistant to abrasion. Available in standard colors.



SEATTLE TUNNEL PROJECT

SC Multipurpose Grout



PEACHTREE CREEK PROJECT

SC Precision Grout

REPAIR PRODUCTS

APPLICATION PROCEDURES FOR REPAIR MORTARS INCLUDE, BUT ARE NOT LIMITED TO:

- Surface preparation is critical to any type of concrete repair. Prepare surface in accordance with ICRI
- Technical Guide No. 03730. It is more important to spend more time on surface preparation than on application of the repair mortar. Any structurally unsound concrete must be removed from the area to be repaired. Prepared surface must be dust-free and have sufficient profile to ensure adequate mechanical bond.
- If the concrete base for the repair material is sound, then all oil, curing compound, dirt, coatings or any other surface contamination must be removed.
- Products being applied in thicknesses greater than one inch, or where significant contamination exists require edge conditioning.
- Square cutting of the edges using a concrete saw is the most typical method. The smooth edge created by the saw cut should be roughened to ensure a mechanical bond at the edges.
- Protect area to be repaired from conditions that may cause early water loss; wind, low humidity, high temperature and direct sunlight.
- Set times will decrease as the product, air, substrate, and mixing liquid temperature increases and will increase as the temperature decreases.
- Do not bridge moving cracks. Maintain all existing joints or saw cut joint after application.
- Substrate must be saturated surface dry (SSD) and free of standing water.
- A bond coat slurry is recommended for achieving better bond with all repair materials. To achieve, mix a small amount of each batch mixed to a wetter consistency. Thoroughly scrub bond coat into the substrate with a clean, wet, stiff broom or brush immediately ahead of mortar placement. Do not allow bond coat to dry prior to placement of repair mortar.
- Make sure to follow all mixing instructions of the repair mortar. These will differ from product to product. Deviating on water to cement mix ratios can cause repair to delaminate prematurely or not fully cure.
- It is good concrete practice to cure all cement-based repair materials. The application of an ASTM C-309 SpecChem curing compound is recommended.
- For additional information on successful concrete repairs, consult International Concrete Repair Institute (ICRI) or American Concrete Institute (ACI) standards and guidelines or call SpecChem at 816-968-5600.





DUO PATCH

A two-component, polymer modified concrete repair mortar with integral corrosion inhibitor for use in horizontal, form and pour and when mixed to a stiffer consistency, vertical and overhead applications.

FINAL FINISH

A ultra fine component, sandless, rapid hardening, polymer modified concrete resurfacer for smoothing, resurfacing, rubbing, and restoring concrete surfaces. Offers a unique long pot life but rapid hardening performance on the substrate to minimize waste and labor.

PRECAST PATCH 5

A fast-setting, general purpose concrete repair mortar for concrete floors, walls, precast, tilt-up and masonry surfaces. Precast Patch 5 can be used for horizontal and vertical applications to provide a durable repair that sets within 5 minutes.

PRECAST PATCH

A general purpose concrete repair mortar for concrete floors, walls, precast, tilt-up and masonry surfaces. Precast Patch can be used for horizontal and vertical applications to provide a durable repair that can be shaped by shaving or sanding.

PRECAST PATCH LIGHT

A light gray colored, polymer-modified, concrete repair mortar for concrete floors, walls, precast, tilt-up and masonry surfaces. Precast Patch Light can be used for horizontal and vertical applications to provide a durable repair that can be shaped by shaving or sanding.

REP CON® H

A single-component, trowelable patching and topping material for horizontal concrete. RepCon H is ideal for resurfacing concrete, small or large areas, interior and exterior applications.

REP CON® H-350

A single-component, polymer modified, fiber reinforced, concrete repair mortar with integral corrosion inhibitor for use in a variety of screed or trowel down horizontal repair applications.

REP CON® V/O

A single-component, polymer modified, high strength repair material. This cement-based, high performance mortar is designed for vertical and overhead applications. Typical applications for RepCon V/O include parking and bridge structures, parapet walls, piers and wharfs, any precast or cast-in-place vertical concrete repairs.

REP CON® 928

A single-component, cementitious, rapid hardening structural repair designed for horizontal applications. RepCon 928 is ideal for the patching of concrete pavements, parking decks, airport runways and taxiways, bridges, industrial floors, as well as, general commercial applications. ASTM C-928.

REP CON® UW MORTAR

A single-component, polymer modified, fiber reinforced concrete repair mortar for use in underwater hand applied concrete repair applications. RepCon UW Mortar is design only for underwater use in tidal zones in applications from 1/2" up to several inches.

REV CRETE

A one-component, polymer modified concrete repair / resurfacing mortar for smoothing, resurfacing, and restoring concrete surfaces. Offers superior durability for all interior and exterior concrete applications. Available in 2-formulations; RevCrete-Fine and RevCrete-Coarse.

SC FOUNDATION COATING

A polymer modified, cement based waterproofing coating formulated to provide superior water-resistant concrete and masonry substrates. Designed to waterproof the exterior surface of below grade concrete and masonry. Closes the internal voids in the substrate, but still allows full breathability. *Available in gray or white.*

SPECPATCH

A single-component, cementitious repair mortar designed for vertical, overhead and horizontal applications. Typical applications for SpecPatch include repairs to concrete pipes, columns, precast concrete, stairs and curbs, or any other general concrete repair.

SPECPLUG

A single-component, ready to use, waterproof hydraulic cement. SpecPlug sets, expands, and anchors quickly to stop water flow and seepage through concrete openings. This product is ideal for sewer, manhole and wall repair.

SUPER SPECPLUG

A single-component, durable, super fast-setting, waterproof hydraulic cement mortar that stops flowing water through holes and cracks in concrete and masonry surfaces. Super SpecPlug sets in approximately 90 seconds and it will not shrink or oxidize.

SPECROCK

A single-component, waterproof, non-shrinking, Portland cement-based anchoring cement that sets in 8-10 minutes. SpecRock expands as it sets and locks into the surrounding concrete.

SPECFLOW

A single-component, cement based, non-shrinking, self-leveling floor underlayment designed for interior use. SpecFlow produces a smooth subfloor that will accept floor coverings in as little as 12-18 hours after installation.

SPECSMOOTH

A single-component, polymer modified concrete repair/resurfacing mortar for smoothing, resurfacing, rubbing and restoring concrete surfaces. SpecSmooth offers superior durability for all interior and exterior, vertical and overhead concrete applications.



ACRYLIC BONDING AGENTS

STRONG BOND

An acrylic admixture and bonding agent designed to improve the adhesion and durability of concrete, masonry, stucco, terrazzo and Portland cement-sand mixes to horizontal and vertical concrete and other surfaces. May contribute to LEED credits. Complies with ASTM C-1059, Type II.

SPECWELD

A ready to use, rewettable polyvinyl acetate (PVA) emulsion which bonds new concrete, underlayments, masonry, stucco, terrazzo and Portland cement/sand mixes to horizontal and vertical concrete or other sound surfaces. Complies with ASTM C-1059, Type I.

SPECPRIME

A ready to use, rewettable primer which bonds new concrete and SpecChem underlayments to horizontal concrete and other sound surfaces. SpecPrime is specifically designed as a primer for SpecFlow.



FORM RELEASE AGENTS	SPECChem	EUCLID/TAMMS	BASF	SIKA
General Purpose Premium	SpecStrip	FormShield Pure	Cast-Off	
Premium Fast-Dry	SpecStrip Plus	FormShield Pure Plus		
Premium Clear	Precast 80			
Water-based	SpecStrip Supreme	Crystal Release VOC		
Biodegradable/Water-based	Dry-Deck WB			
	Bio Strip WB	Form-EZE Natural		
CURES & SEALERS	SPECChem	EUCLID/TAMMS	BASF	SIKA
Solvent-based 25% Solids	Cure & Seal 25	Diamond Clear, Rez Seal	MasterKure CC 250 SB	
Solvent-based 30% Solids	Cure & Seal 30	Super Floor Coat	MasterKure CC 300 SB	
Water-based	Cure & Seal WB	Aqua-Cure VOX	MasterKure CC 160 WB	
Water-based; High Solids	Cure & Seal WB 25	Super Aqua-Cure VOX		
ASTM C-1315, Type 1, Class A	Cure & Seal 25 UV	Super Diamond Clear	MasterKure CC 250 SB	
PAVING CURING COMPOUNDS	SPECChem	EUCLID/TAMMS	BASF	SIKA
White Pigmented Wax (Non-DOT)	SpecCity White			
White Pigmented Wax, Type II, Class A	Pave Cure WW			
DOT Resin-based, Type I, ID Class A & B	Pave Cure Rez Clear			
DOT Resin-based, Type II, ID Class A & B	Pave Cure Rez White			
CURES & HARDENERS	SPECChem	EUCLID/TAMMS	BASF	SIKA
Resin-based (or with Dye)	SpecRez	Kurex DR VOX		
Premium (non-yellowing) Resin Cure	Crystal Rez			
Flooring Compatible Cure	E-Cure; SC Cure 500®			
Sodium Silicate Hardener	Cure Hard	Eucosil	MasterKure HD 110 WB	
Siliconate Hardener	SpecHard	Euco Diamond Hard	MasterKure HD 210 WB	
Fluosilicate Hardener	Spec-O-Lith	SurfHard	Lapidolith	
Lithium Sealer	LithSeal SC	Ultrasil Li+		
Low Solids Lithium Sealer	LithSeal Lite			
Polishable Concrete Guard	SpecGuard	Ultra Guard		
BONDBREAKERS	SPECChem	EUCLID/TAMMS	BASF	SIKA
Water-based	SpecTilt WB			
Solvent-based	SpecTilt 100			
Quick Dry, Solvent-based	SpecTilt QD			
EVAPORATION RETARDERS	SPECChem	EUCLID/TAMMS	BASF	SIKA
Ready to Use	SpecFilm RTU			
Concentrated	SpecFilm Concentrate	Eucobar	MasterKure ER 50	Sika Film
SURFACE RETARDERS	SPECChem	EUCLID/TAMMS	BASF	SIKA
Horizontal Surface Retarder	SpecEtch	Concrete Surface Retarder S		Rugasol S
Deep Horizontal Surface Retarder	SpecEtch Deep			
CLEANERS & STRIPPERS	SPECChem	EUCLID/TAMMS	BASF	SIKA
Citrus Degreaser & Stripper	Orange Peel	Euco Clean & Strip	Citrus Degreaser	
Hardened Concrete Remover	SpecBlast	Concrete Blaster		
PROTECTIVE SEALERS	SPECChem	EUCLID/TAMMS	BASF	SIKA
High Gloss, Breathable Sealer	Surface Shine	Ever Clear		Aggribrite VOC
Premium High Gloss Decorative Sealer	Deco Shine	Super Diamond Clear		
Premium Matte Finish Decorative Sealer	Deco Shine Matte			
OTC Exempt Premium Sealer	Crystal Shine	Lusterseal 350		
Premium Decorative Sealer, Water-based	Aqua Shine	Lusterseal 300 WB	Everclear VOX	
Water Borne Silane/Siloxane Sealer	SpecShield WB	Weather-Guard, ChemStop WB	White Roc 10 WB	
Water Borne Deep Penetrating Sealer 20%	SpecSilane 20 WB			
Water Borne Deep Penetrating Sealer 40%	SpecSilane 40 WB	Barcade Silane 40		
ACRYLIC BONDING AGENTS	SPECChem	EUCLID/TAMMS	BASF	SIKA
Acrylic, Non-re-emulsifiable	Strong Bond	Flex-con	MasterEmaco A660	
Polyvinyl Acetate (PVA), Re-emulsifiable	SpecWeld	EucoWeld	Eco Weld	
EPOXY BONDING AGENTS	SPECChem		BASF	SIKA
Low Viscosity Injection Resin	SpecPoxy 1000	Euco #452 LV	MasterInject 1701	Sikadur Hi Mod 35
Medium Viscosity Inject Resin	SpecPoxy 2000	Euco #452 MV	MasterEmaco ADH 330	Sikadur Hi Mod 32
Epoxy Gel Adhesive	SpecPoxy 3000	Euco #452 Gel	MasterEmaco ADH 335	Sikadur Hi Mod 31
Rapid Setting Epoxy Gel	SpecPoxy 3000 FS	Euco #620 Gel	Rapid Gel	Sikadur Hi Mod 33
EPOXIES	SPECChem	EUCLID/TAMMS		SIKA
Low-mod, Epoxy Binder/Adhesive	SpecPoxy Binder	Flexolith		
Semi-rigid, Epoxy Control Joint Filler	SpecPoxy C.J.	Euco 700	MasterSeal CR 335	Sikadur 51 SL
High-build, Epoxy Coating	SpecPoxy Coating	Duralkote 240		
High Strength Epoxy Grout	SpecPoxy Grout	E-3F, E-3G, E-3HP, Polygrout	MasterFlow 648 CP	Sikadur 42
Multi-purpose Epoxy Mortar	SpecPoxy Mortar	Dural Flex Fastpatch		
70% Solids, Penetrating Epoxy Sealer	SpecPoxy Sealer	Dural 50LM	MasterFlow GP	
CEMENTITIOUS GROUTS	SPECChem	EUCLID/TAMMS	BASF	SIKA
Non-shrink, Multi-purpose Grout	SC Multipurpose Grout	NS Grout/NC Grout	MB Construction Grout	SikaGrout 212
Non-shrink, High Early Strength	SC Precision Grout		MasterFlow 928	SikaGrout 328
Non-shrink, High Metallic Grout	SC Metallic Grout		Embaco 885	
DRY-SHAKE HARDENERS	SPECChem	EUCLID/TAMMS	BASF	SIKA
Quartz	Quartz Floor Hardener	Surflex	MasterTop 100	
REPAIR PRODUCTS	SPECChem	EUCLID/TAMMS	BASF	SIKA
Thin Resurfacing Material	SpecPatch	Eucopatch/Thin Patch	MasterEmaco N 425	Sika Repair 222
Single-component, General Purpose Repair	SpecPatch	EucoCrete	Sonopatch TC	Sika Top 121
Precast Patch	Precast Patch	Speed Crete Redline		Sika Repair 223, Sika Quick VOH
Two-component, Horizontal Repair	Duo Patch	Tammspatch II, DuraTop Flowable Mortar	Sonopatch 300	Sika Top 122 Plus
Vertical Wall Rubbing Repair	SpecSmooth	Tammscrete		
V/O Polymer Modified	RepCon® V/O	Verticoat Supreme, Verticoat	Gel Patch/Sonopatch 200	Sika Top 123 Plus
Single-component, Dry Polymer	RepCon® H	VersaSpeed/Express Repair	MasterEmaco R310 CL, Emaco 566	Sika Set Mortar
Rapid Setting, Polymer Modified	RepCon® 928	Euco-Speed/PatchRoc/Express Repair	Multipatch/Patch Roc 10-60	Sikaquick 1000
Rapid Setting, Hydraulic Cement	SpecPlug	Speed Plug	Sonoplug/Water Plug	Sika Set Plug
Pourable Anchoring Cement/Accelerating Admixture	SpecRock	Euco Rock		
Self-Leveling Underlayment	SpecFlow	SuperFlow Top	Chemrex	
Tilt Wall Patch/ Flooring Skim Patch	Final Finish	Thin Top Supreme		
Concrete Resurfacing	RevCrete	Euco Re-cover		

Misc = NoxCrete (NX), Lyons, Adhesive Tech (AT), L&M, Glaze N' Seal (GS), CTS Rapid Set, Ardex, Right Pointe (RP), Scofield (S)

PRODUCT COMPARISON

W.R. MEADOWS	DAYTON	Misc.	Misc.	Misc.
Duogard, Duogard Ditrus	J-1, J-1-A J-2	Cresset 727		L&M E-Z Strip L&M Debond
Duogard Plus	J-3	Crete-Lease 880 Crete-Lease 880 VOC	NoxCrete Plus	
	J-4 BIO/ J-1EF	Crete-Lease BioTru	Nox-PCE NoxCrete Bio-Nox	
W.R. MEADOWS	DAYTON	Misc.	Misc.	Misc.
CS-309-25	J-20, J-22		(NX) Cure & Seal 1315 A	L&M Dress & Seal 25
CS-309-30	J-23		(NX) Cure & Seal 120 E	L&M Dress & Seal 30
VOCOMP-20	J-18, J-19	(GS) Multi-Purpose Sealer	(NX) Cure & Seal 250 E	
VOCOMP-25	J-19, J-22 WB			L&M Dress & Seal WB 25
CS-309-35	J-22UV			L&M LumiSeal Plus
W.R. MEADOWS	DAYTON	Misc.	Misc.	Misc.
	J9-A		(NX) CityCure WW	
1600-White	White Wax Cure	(RP) White Water Wax	(NX) DOT Road Cure WW	L&M Cure W
1100-Clear	Clear Resin Cure	(RP) Clear Water Resin		L&M Cure R
1200-White	White Resin Cure	(RP) White Water Resin		L&M Cure R-2
W.R. MEADOWS	DAYTON	Misc.	Misc.	Misc.
1100/1300 Clear Series	J-11-W		(NX) Res-Cure DH	L&M Cure R
Med-Cure	J-13			L&M Chem Hard/L&M Cure
Liqui-Hard	J-17	Ashford Formula	(NX) DuroNox	L&M Seal Hard
		Consoliddeck LS		L&M Lion Hard
	Pentra Hard-Densifier	Consoliddeck LS CS		
			(NX) DuroPolish Plus	
W.R. MEADOWS	DAYTON	Misc.	Misc.	Misc.
	J-6 WB, Maxi-Tilt	(NX) Silcoseal 2000F	(NX) Silcoseal Select	
	J-6, Super Maxi Tilt	(NX) Silcoseal 100	(NX) Silcoseal Classic	
W.R. MEADOWS	DAYTON	Misc.	Misc.	Misc.
Evapre-RTU	Aquafilm, J-74 RTU			
Evapre	J-74, Aquafilm Conc.			L&M E-Con
W.R. MEADOWS	DAYTON	Misc.	Misc.	Misc.
Top Stop	Top Cast			
W.R. MEADOWS	DAYTON	Misc.	Misc.	Misc.
Ultrite Degreaser	J-48		(NX) BioClean	L&M Citrex
W.R. MEADOWS	DAYTON	Misc.	Misc.	Misc.
Tiah	J-24		(NX) Nox-Carb	
Decra-Seal	J-35	(GS) Original Wet Lacquer	(NX) Sparkl-Seal	(S) CureSeal - S
	J-355			(S) CureSeal - S Matte
Expo-Gloss OTC		(GS) Wet Lacquer 2000		
	Ultra Seal EF	(GS) "Wet Look II" Sealer	(NX) Sparkl-Seal E	(S) CureSeal - W
	J-26 WB	(GS) Natural Look		L&M AquaPel
Deck-o-Shield	J-29			L&M AquaPel Plus
W.R. MEADOWS	DAYTON	Misc.	Misc.	Misc.
Acryl-Lok	J-40			L&M Everbond
Everweld	J-41	Weld Crete		L&M Everweld
W.R. MEADOWS	DAYTON	Misc.	Misc.	Misc.
Rezi-Weld LV	J-56	Concressive 1375	(AT) Crackbond LR 321	
Rezi-Weld 1000	J-58	Concressive LPL	(AT) Ultrabond 2100	
Rezi-Weld Gel Paste	J-50	Concressive 1444	(AT) Ultrabond 2300	
Rezi-Weld Gel Paste	J-51 FS		(AT) Ultrabond 1300	
W.R. MEADOWS	DAYTON	Misc.	Misc.	Misc.
Rezi-Weld Flex	J-52	MM-80		
Rezi-Weld 3/2	J-55			L&M EpogROUT 758
	Sure Patch			
W.R. MEADOWS	DAYTON	Misc.	Misc.	Misc.
CG-86	#1107		CTS MP Grout	L&M Duragrout
588	High Performance Grout Dayton Metallic Grout	14K Hy-Flow	Five Star Grout	L&M Crystex
W.R. MEADOWS	DAYTON	Misc.	Misc.	Misc.
	Quartz Tuff			Quartzplate FF
W.R. MEADOWS	DAYTON	Misc.	Misc.	Misc.
Meadow-Patch 20	Recrete	Ardex SKM		L&M Duracrete
Meadow-Patch T-1	Thin Resurfacer	Ardex GPS		
		Ardex OVP		Lyons Cast Patch
	Special Patch	Ardex CD	CTS Cement All	Lyons PatchCrete
	Architectural Finish			
	Permapatch V/O	Ardex B20	CTS Mortar Mix	
Futura 15	Polyfast	EMACO 566		
Meadow-Crete FNP	HD-45/HD-50, Pave Patch 3000	EMACO T545/T415	CTS Concrete Mix	Lyons PowerCrete
Meadow-Plug	Waterstop		Lambert LamcoPlug	L&M DuraPlug/Lyons PlugCrete
Speed-E-Rock	Ankertite, Anchor All		Super Por Rock	Lyons Flow-Rock/L&M Levelex
Floor-Top STC	Level Layer	Ardex K15	CTS Tru	Lyons Flow Crete SL4
		Ardex Tilt Wall Patch/Feather Finish	CTS Wunder Fixx	Lyons PaveCrete Plus
		Ardex CD	Lambert Renew	Lyons Finish Crete/L&M DuraFloor HP

NOTES



NOTES





1511 Baltimore Ave., Suite 600
Kansas City, MO 64108
816-968-5600
F. 816-561-4029
www.specchemllc.com

