

PRODUCT APPLICATION

VertiClip® SLT and SLT(L) slide clips connect exterior curtain wall studs, bypassing the building's structural concrete slab or structural steel frame, while allowing for a vertical deflection of the structure of 1" (½" up and down for SLT) and 1.875" (0.938" up and down for SLT(L)). VertiClip's unique design provides both an anti-friction and anti-seizure connection between the clip and stud web surface thereby preventing a transfer of vertical forces into curtain wall framing, which is not engineered to support axial loads. Allowable loads are based on use of #12 screws for attachment to stud (provided by TSN).

MATERIAL COMPOSITION

ASTM A1003/A1003M Structural Grade 50 (340) Type H, ST50H (ST340H): 50ksi (340MPa) minimum yield strength, 65ksi (450MPa) minimum tensile strength, 97mil minimum thickness (12 gauge, 0.1017" design thickness) with ASTM A653/A653M G90 (Z275) hot dipped galvanized coating.

VertiClip SLT series is designed to support horizontal loads and must not be used in axial-load-bearing wall construction.

The attachment of VertiClip to the primary structure may be made with PAF, screw/bolt anchors or weld or weld and is dependent upon the base material (steel or concrete) and the design configuration.



An ICC-ES Evaluation Report for VertiClip® SLT 9.5 and SLT(L)-18 is available. Refer to ICC-ESR-1903 at www.icc-es.org or at www.steelnetwork.com.

VERTICLIP® SLT(L)

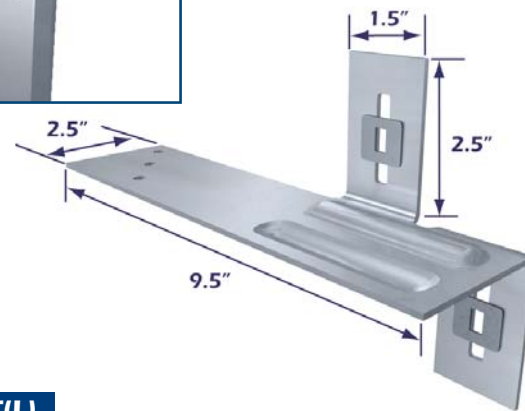


US Patents #5,467,566 & #5,906,080

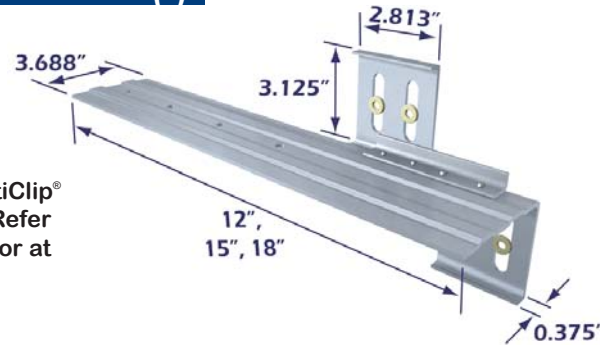
VERTICLIP® SLT



VERTICLIP® SLT



VERTICLIP® SLT(L)



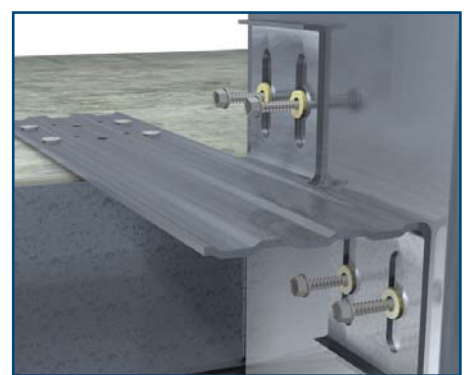
VERTICLIP® SLT INSTALLATION



Attach SLT to top of slab with engineered attachment. Allow 4" minimum clip area for attachment to slab.



Align studs to SLT for plumb wall assembly.



Attach SLT to wall stud with provided screws through Step Bushings.

QUALITY FEATURES

- ◆ Positive, load-rated, mechanical attachment to stud web
- ◆ 97 mil (12 Gauge) material
- ◆ Friction-free movement
- ◆ Certified material
- ◆ Eliminates untested “scabs” or shims
- ◆ Step Bushings are taped in place at factory for correct placement
- ◆ Tested screws provided

LABOR BENEFITS

- ◆ Provides for tolerance of studs from deck
- ◆ Attaches to horizontal surfaces, eliminating heavy reinforced slab closure plates
- ◆ Quick and easy way to plumb studs
- ◆ No time spent installing extra “scabs” or shims
- ◆ Step Bushings pre-installed
- ◆ Screws provided

VERTICLIP® SLT NOMENCLATURE

VertiClip SLT is available in a length of 9 ½”.

VertiClip SLT(L) is available in lengths of 12”, 15”, and 18”.
Determine length by adding stud + offset + 3” (for steel, or 5.5” for concrete) and selecting the next largest size.



An ICC-ES Evaluation Report for VertiClip® SLT 9.5 and SLT(L)-18 is available. Refer to ICC-ESR-1903 at www.icc-es.org or at www.steelnetwork.com.

EXAMPLE DETAILS



VertiClip® SLT attached to the underside of wide flange beam.

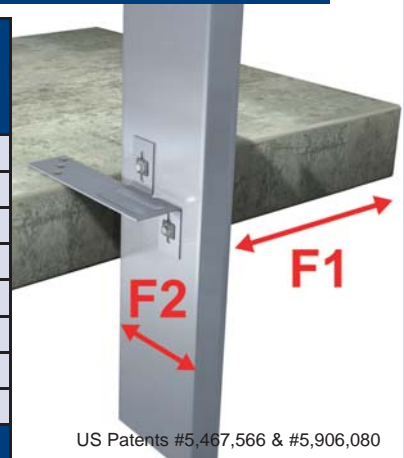
QUANTITY / ORDER INFORMATION

Designation	Qty/Box	Lbs/Box	Pcs/Skid	Lbs/Skid
SLT-9.5	50	47	1600	1504
SLT(L)12	25	43	375	645
SLT(L)15	20	46	300	690
SLT(L)18	20	50	300	750

ALLOWABLE (UNFACTORED) LOADS¹

VertiClip® Series	Load Direction	Stud Thickness Mils (ga)	Fy (yield) Stud (ksi)	F2 w/2 screws (lbs)	Load Direction	Stud Thickness Mils (ga)	Fy (yield) Stud (ksi)	F1 w/2 screws (lbs)	
SLT 9.5 (Clip is 12ga, 97mils)	F2	33 (20)	33	376	F1	33 (20)	33	190	
		33 (20)	50	510		33 (20)	50	275	
		43 (18)	33	510		43 (18)	33	248	
		43 (18)	50	510		43 (18)	50	341	
		54 (16)	33	510		54 (16)	33	312	
		54 (16)	50	510		54 (16)	50	341	
		68 (14)	50	510		68 (14)	50	341	
		97 (12)	50	510		97 (12)	50	341	
Maximum Allowable Clip Load				510	Maximum Allowable Clip Load				341

LOAD DIRECTION



US Patents #5,467,566 & #5,906,080

VertiClip® Series	Load Direction	Stud Thickness Mils (ga)	Fy (yield) Stud (ksi)	F2 w/2 screws (lbs)	F2 w/4 screws (lbs)	Load Direction	Stud Thickness Mils (ga)	Fy (yield) Stud (ksi)	F1 w/2 screws (lbs)	F1 w/4 screws (lbs)	
SLT(L) (Clip is 12ga, 97mils)	F2	33 (20)	33	376	700	F1	33 (20)	33	190	380	
		33 (20)	50	544	700		33 (20)	50	275	452	
		43 (18)	33	560	700		43 (18)	33	248	452	
		43 (18)	50	700	700		43 (18)	50	359	452	
		54 (16)	33	700	700		54 (16)	33	312	452	
		54 (16)	50	700	700		54 (16)	50	450	452	
		68 (14)	50	700	700		68 (14)	50	452	452	
		97 (12)	50	700	700		97 (12)	50	452	452	
Maximum Allowable Clip Load				700	700	Maximum Allowable Clip Load				452	452

- ◆ Allowable loads have not been increased for wind, seismic, or other factors.
 - ◆ Two (2) #12 screws are provided with each VertiClip SLT.
 - ◆ Four (4) #12 screws are provided with each VertiClip SLT(L).
- ¹ For LRFD Design Strengths refer to ICC-ESR-1903 (p23).